



Print Options for SAPscript and SAP Smart Forms

NW F I18N Printing

September 2007

Print Options for SAPscript and SAP Smart Forms (POSS) enables users to select additional print options for single output requests.

Print options (like input tray selection, output bin selection, duplex printing, colour printing, etc..) are available when:

- **Printing interactively and directly from SAPscript or from the Smart Forms Composer**
- **Printing spool requests from the Output Controller**

Print Dialog for SAPscript and Smart Forms

Users can select additional Print Options when printing interactively from SAPscript/Smart Forms dialog:

The screenshot shows the 'Print' dialog box with the following sections:

- Output Device:** ZABPOSS (selected) and ZHPOSS (available).
- Number of copies:** 1
- Page Selection:** (empty)
- Spool Request:**
 - Name: SCRIPT, SEEM
 - Title: (empty)
 - Authorization: (empty)
- Spool Control:**
 - Print immediately
 - Delete After Output
 - New Spool Request
 - Close Spool Request
 - Spool Retention Per.: 8 Day(s)
 - Storage Mode: 1 Print only
- Cover Page Settings:**
 - SAP Cover Page: Do Not Print
 - Recipient: (empty)
 - Department: (empty)

At the bottom, there are four buttons: 'Print Preview', 'Print', 'Additional Options' (circled in red), and a close button (X).

Print Dialog for SAPscript and Smart Forms

The image displays two screenshots of the 'Edit Print Options' dialog box in SAP. The left screenshot shows the initial state where all print options are set to 'No Selection'. The right screenshot shows the 'Double-sided Printing' option selected, with its value changed to 'Double-Sided, short edge Binding'. A red box highlights the selected row in both screenshots. A tooltip in the left screenshot indicates that double-clicking on a line selects or changes a value.

Print Option	Option Value	Information
Print Options for Printer ZABPOSS		
Input Tray	No Selection	
Output Tray	No Selection	
Double-sided Printing	No Selection	
Job Separation	No Selection	
Stapling Function	No Selection	
User Authentication	No Selection	
Super duper Printoption	No Selection	

Double-click on a line to select or change a value



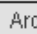


Print Option	Option Value	Information
Print Options for Printer ZABPOSS		
Input Tray	No Selection	
Output Tray	No Selection	
Double-sided Printing	Double-Sided, short edge Binding	
Job Separation	Activated	
Stapling Function	Top-Right Corner	
User Authentication	No Selection	
Super duper Printoption	No Selection	

Option Value:
Double-Sided, short edge Binding

Print spool request from Output Controller

From Output Controller (SP01), users can also select additional Print Options when printing a SAPscript or Smart Forms document:


Output controller: Print spool request 186810

  All |  Archive |  

Print Parameters

Output Device ZHPOSS

Number of Copies **Additional Options**

Priority 

From Page To Page

Cover Page

Recipient

Department

Title

Spool Request

Name

Number

Format SAPscript DIN A4

Print spool request from Output Controller

Double-click on a line to select or change a value:

Print Option	Option Value	Information
Print Options for Printer ZABPOSS	Spool Request	186810
Input Tray	No Selection	
Output Tray	No Selection	
Double-sided Printing	No Selection	
Job Separation	No Selection	
Stapling Function	No Selection	
User Authentication	No Selection	
Super duper Printoption	No Selection	

Print Option	Option Value	Information
Print Options for Printer ZABPOSS	Spool Request	186810
Input Tray	Input Tray 1	
Output Tray	No Selection	
Double-sided Printing	Double-Sided, long edge binding	
Job Separation	No Selection	
Stapling Function	Top-Left Corner	
User Authentication	No Selection	
Super duper Printoption	No Selection	

Option Value:
Input Tray 1

- ❶ **Physical printer which supports Print Options**
- ❷ **Appropriate device type configured to support dedicated options:**
 - input trays
 - output trays
 - colour / monochrome
 - simplex / duplex (long and short)
 - stapling
 - punching
 - job separation
 - page binding
 - user authentication
 - other vendor-specific functions
- ❸ **Output device customized according to the capabilities of the physical printer**

Customizing Output Devices in SPAD

SPAD administrators can customize Print Options for output devices:

- **Disable options which are not available on particular physical printers → not selectable when printing**
- **Pre-select options which should not be changeable by the users**

Output Device: ZABPOSS Short name: ZAB

DeviceAttributes Access Method Output Attributes Tray Info Print Options

Print Option	Print Option Status	Preselection
Print Options for Printer ZABPOSS		
Input Tray	<input checked="" type="checkbox"/> Enabled	
Input Tray 1	<input checked="" type="checkbox"/> Enabled	<input type="checkbox"/>
Input Tray 2	<input checked="" type="checkbox"/> Enabled	<input type="checkbox"/>
Input Tray 3	<input type="checkbox"/> Disabled	
Output Tray	<input checked="" type="checkbox"/> Enabled	
Upper tray	<input checked="" type="checkbox"/> Enabled	<input type="checkbox"/>
Lower output tray	<input checked="" type="checkbox"/> Enabled	<input type="checkbox"/>
Double-sided Printing	<input checked="" type="checkbox"/> Enabled	
Double-Sided, long edge binding	<input checked="" type="checkbox"/> Enabled	<input checked="" type="checkbox"/>
Double-Sided, short edge Binding	<input checked="" type="checkbox"/> Enabled	<input type="checkbox"/>
Single sided	<input checked="" type="checkbox"/> Enabled	<input type="checkbox"/>
Job Separation	<input checked="" type="checkbox"/> Enabled	<input type="checkbox"/>
Stapling Function	<input checked="" type="checkbox"/> Enabled	
Top-Left Corner	<input checked="" type="checkbox"/> Enabled	<input type="checkbox"/>
Top-Right Corner	<input checked="" type="checkbox"/> Enabled	<input type="checkbox"/>
User Authentication	<input type="checkbox"/> Disabled	

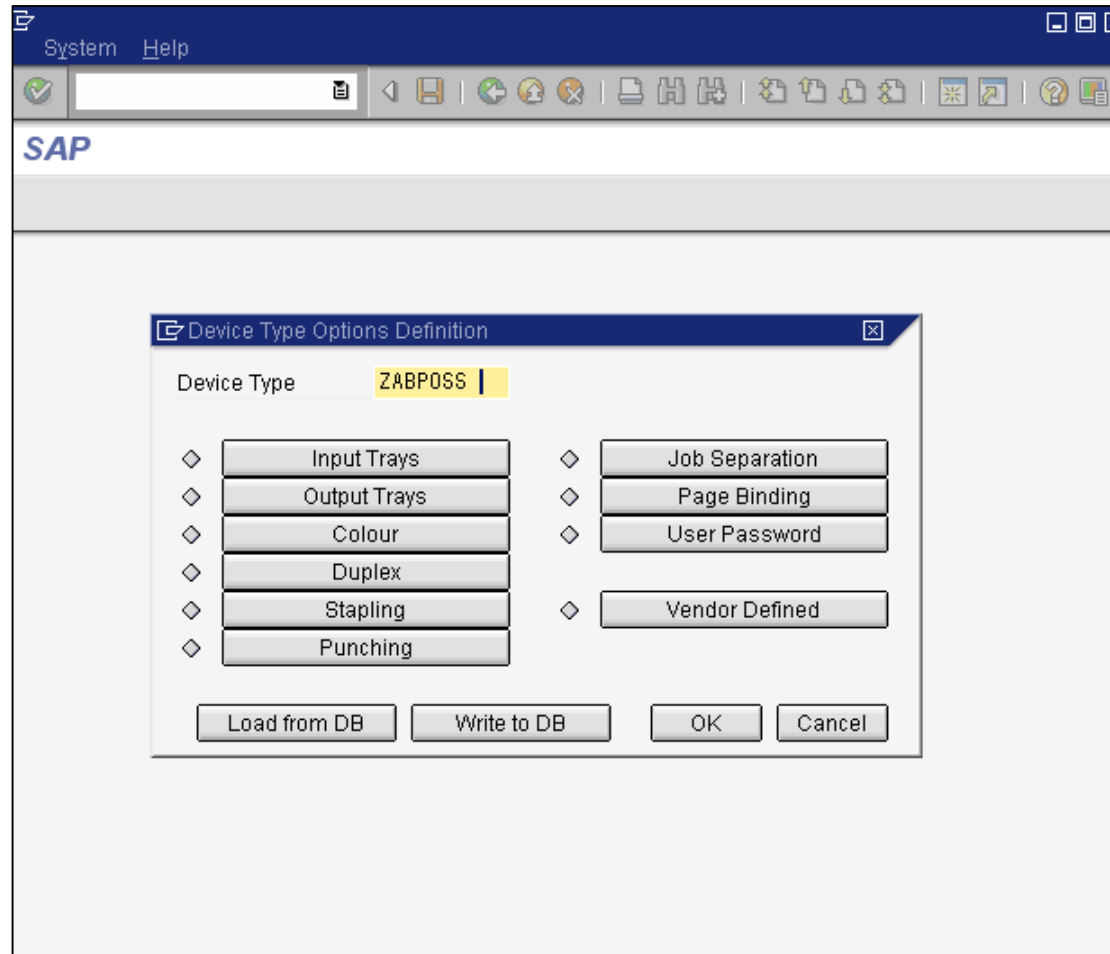
This Screen shows Print Options Supported by the Device Type
You can disable Options which are not available for the connected Printer
Example: Device Type supports Input Trays 1,2,3 but Printer has only 1,2

Here the physical printer has only 2 input trays, so Option 'Input Tray 3' is disabled.

Here the physical printer should only be used for double-sided printing.

Developing Device Types with Print Options

SPAD administrators can run report RSPOPOSS_SET to add Print Options to their own device types:



Print Options for SAPscript and SAP Smart Forms (POSS) is available with the Support Packages listed below:

SAP_BASIS 6.20 SP63 and higher
SAP_BASIS 6.40 SP21 and higher
SAP_BASIS 7.00 SP13 and higher
SAP_BASIS 7.10 SP00 and higher

Please check SAP Note [1049778](#) for details on required SAP Kernel Patch Levels.

Attached to this SAP Note you will also find the POSS User Guide.

No part of this publication may be reproduced or transmitted in any form or for any purpose without the express permission of SAP AG. The information contained herein may be changed without prior notice.

Some software products marketed by SAP AG and its distributors contain proprietary software components of other software vendors.

Microsoft, Windows, Excel, Outlook, and PowerPoint are registered trademarks of Microsoft Corporation.

IBM, DB2, DB2 Universal Database, OS/2, Parallel Sysplex, MVS/ESA, AIX, S/390, AS/400, OS/390, OS/400, iSeries, pSeries, xSeries, zSeries, System i, System i5, System p, System p5, System x, System z, System z9, z/OS, AFP, Intelligent Miner, WebSphere, Netfinity, Tivoli, Informix, i5/OS, POWER, POWER5, POWER5+, OpenPower and PowerPC are trademarks or registered trademarks of IBM Corporation.

Adobe, the Adobe logo, Acrobat, PostScript, and Reader are either trademarks or registered trademarks of Adobe Systems Incorporated in the United States and/or other countries.

Oracle is a registered trademark of Oracle Corporation.

UNIX, X/Open, OSF/1, and Motif are registered trademarks of the Open Group.

Citrix, ICA, Program Neighborhood, MetaFrame, WinFrame, VideoFrame, and MultiWin are trademarks or registered trademarks of Citrix Systems, Inc.

HTML, XML, XHTML and W3C are trademarks or registered trademarks of W3C®, World Wide Web Consortium, Massachusetts Institute of Technology.

Java is a registered trademark of Sun Microsystems, Inc.

JavaScript is a registered trademark of Sun Microsystems, Inc., used under license for technology invented and implemented by Netscape.

MaxDB is a trademark of MySQL AB, Sweden.

SAP, R/3, mySAP, mySAP.com, xApps, xApp, SAP NetWeaver, and other SAP products and services mentioned herein as well as their respective logos are trademarks or registered trademarks of SAP AG in Germany and in several other countries all over the world. All other product and service names mentioned are the trademarks of their respective companies. Data contained in this document serves informational purposes only. National product specifications may vary.

The information in this document is proprietary to SAP. No part of this document may be reproduced, copied, or transmitted in any form or for any purpose without the express prior written permission of SAP AG.

This document is a preliminary version and not subject to your license agreement or any other agreement with SAP. This document contains only intended strategies, developments, and functionalities of the SAP® product and is not intended to be binding upon SAP to any particular course of business, product strategy, and/or development. Please note that this document is subject to change and may be changed by SAP at any time without notice.

SAP assumes no responsibility for errors or omissions in this document. SAP does not warrant the accuracy or completeness of the information, text, graphics, links, or other items contained within this material. This document is provided without a warranty of any kind, either express or implied, including but not limited to the implied warranties of merchantability, fitness for a particular purpose, or non-infringement.

SAP shall have no liability for damages of any kind including without limitation direct, special, indirect, or consequential damages that may result from the use of these materials. This limitation shall not apply in cases of intent or gross negligence.

The statutory liability for personal injury and defective products is not affected. SAP has no control over the information that you may access through the use of hot links contained in these materials and does not endorse your use of third-party Web pages nor provide any warranty whatsoever relating to third-party Web pages.