

Crystal Reports 8.0

Using The Seagate Software Design Time Control in Visual Interdev 6

Overview

Visual Interdev 6.0 was released by Microsoft as part of the Visual Studio collection of development tools. It is an IDE that allows the development and maintenance of web applications.

Contents

WHAT IS A DESIGN TIME CONTROL?	1
ADDING THE DTC TO VISUAL INTERDEV 6.0	2
USING THE REPORTSOURCE DTC	2
<i>The General Tab.....</i>	2
Adding a Report to an ASP Page	2
<i>The Accounts Tab.....</i>	3
<i>The Parameters Tab.....</i>	4
<i>The Selection Formula Tab.....</i>	4
USING THE REPORTVIEWER DTC	5
<i>The General Tab.....</i>	5
<i>The Options Tab.....</i>	5
EXTENDING THE ASP CODE	6
CONTACTING CRYSTAL DECISIONS FOR TECHNICAL SUPPORT	6

What is a Design Time Control?

A Design Time Control (DTC) is similar to an ActiveX control that can be used to place functionality on a web page with a visual interface. DTCs represent blocks of pre-made code or runtime text. When the DTC is modified or moved about the web page the runtime text behind the control is actually changed. This is similar to using controls in other development applications such as Visual Basic where when we move a control it changes the code behind the object.

Design Time Controls are time savers for developing applications. They can be placed on a web page and after setting a few options the code is produced. They also have an advantage over using ActiveX Controls or Java Applets, because

when the user accesses a page that uses DTCs, the DTCs are replaced by the runtime text behind the code.

Most Design Time Controls require the Scripting Object Model to be enabled. If a DTC requires the Scripting Object Model then the user will be prompted when the control is dragged onto the web page. The Scripting Object Model is a 'wrapper' around the processing of the page that allows for an event-driven coding solution.

Adding the DTC to Visual Interdev 6.0

When Crystal Reports 8 Developers Edition is installed, there is an option under Developer's Tools during the install for the Report Integration Control. Selecting this option will install the Crystal Reports DTC (ssdtc.dll) into the ..\Program Files\Seagate Software\Shared\Design Time Control directory.

To add the Design time control to Visual Interdev it will be necessary to add the control to the toolbox. Under the tools menu choose the option to Customize Toolbox. Under here select the Report Source and the Report Viewer options.

There are 2 Design Time Controls:

- ReportSource
- ReportViewer

The ReportSource control is where the report is defined along with any logon information, parameters or selection formulas. The ReportViewer control allows us to set what kind of viewer to send to the client as well as what the viewer should look like.

Using The ReportSource DTC

The ReportSource control is used to control the properties of the report that is displayed on your ASP page. It is used to define the location of the report, login information, parameter information, and selection formulas.

The General Tab

The first tab on the ReportSource control is the General tab. Here, we define the actual location of the report itself. This is the first step necessary when adding your report to an ASP application when using Visual Interdev.

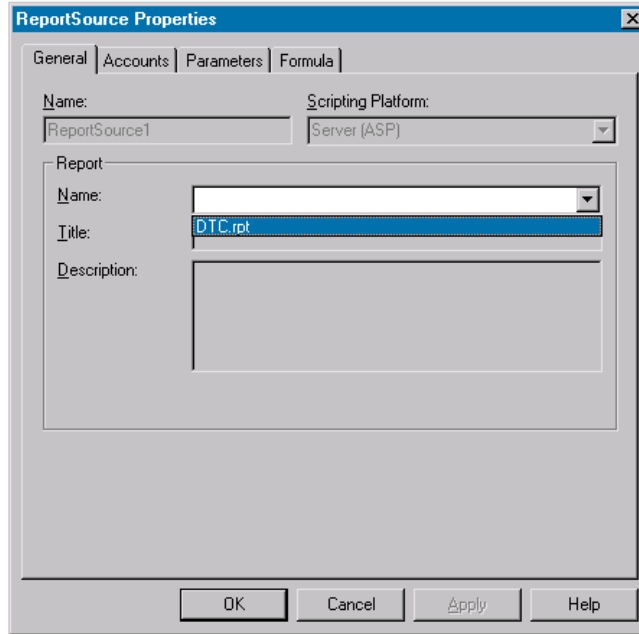
Adding a Report to an ASP Page

Here are the steps for using the ReportSource DTC in order to include your report in your ASP page:

1. Drag the ReportSource control onto an ASP page.
2. Right-click on the control and choose Properties. The first tab is where the report name is chosen. If there are no reports in the dropdown list box then most likely that there were not any reports added to the project.
3. Click **Add Item** on the top right of the screen.
4. Choose **Existing** and change "View files of type" to All files.

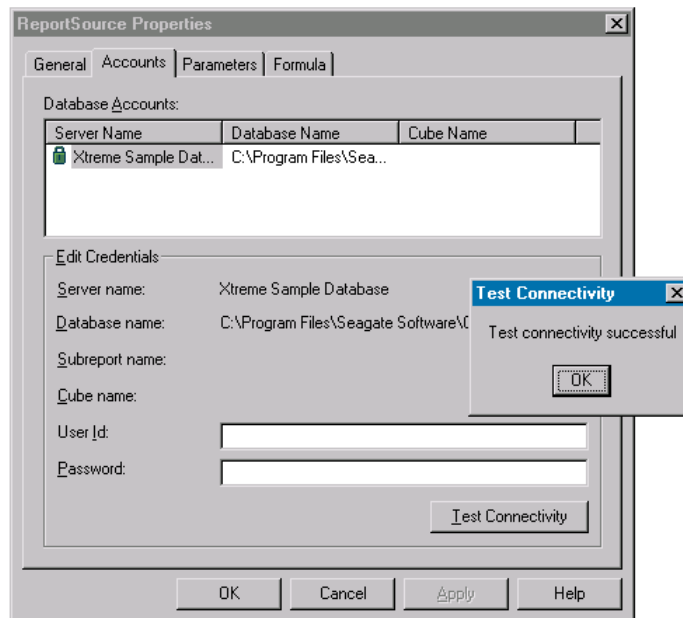
5. Navigate into the directory where the reports are located and add the report to the project.

Once the report is added it will show up in the drop down list box for the report name in the properties of the ReportSource.



The Accounts Tab

The next tab is the Accounts tab. This allows us to set the usernames and passwords to log onto the data sources. Please make sure that all tables and all subreports are logged onto. There is a **Test Connectivity** button that will hit the database to make sure that the logon information is correct.



The Parameters Tab

The next tab is the Parameters tab. If there are any parameters on the report (stored procedure or Crystal parameters) they will need to be set on this tab. Just highlight the parameter and click on the **New** button. Enter the value below. The text box will show the expected format of the parameter. If all the parameters are not set then the ASP page will not respond. This is because Craxdrt.dll will be waiting for the parameter that is never passed to it.

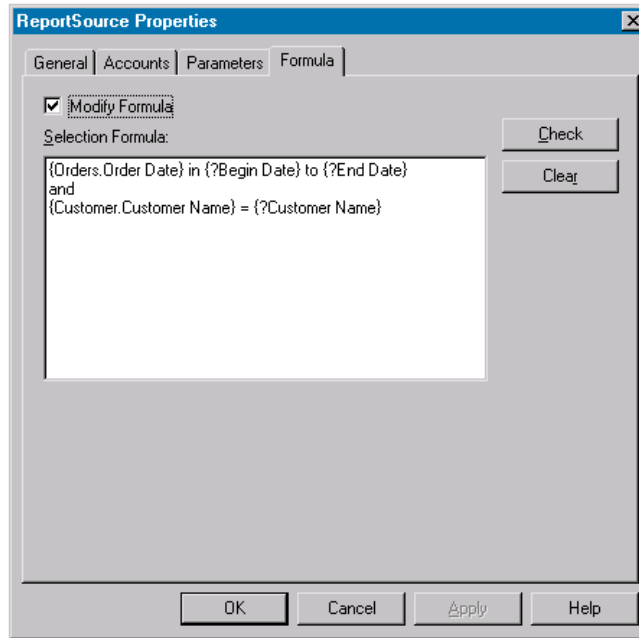
The screenshot shows the 'ReportSource Properties' dialog box with the 'Parameters' tab selected. The 'Fields' section contains a table with the following data:

Name	Prompt	Use Defaults	Nullable
[?] Begin Date	Please enter a start date	<input checked="" type="checkbox"/>	<input type="checkbox"/>
[?] End Date	Please enter an End D...	<input checked="" type="checkbox"/>	<input type="checkbox"/>
[?] Customer Name	Please enter a Custom...	<input type="checkbox"/>	<input type="checkbox"/>

Below the table is a 'New' button. The 'Edit Parameters' section shows 'Current Values:' with a text box containing 'Alley Cat Cycles'. Below that is a 'Value:' label and a dropdown menu also showing 'Alley Cat Cycles'. At the bottom are 'OK', 'Cancel', 'Apply', and 'Help' buttons.

The Selection Formula Tab

The last tab is the Selection Formula tab. This allows the selection formula to be set at runtime. By specifying the selection formula the report can retrieve a different set of records for each record selection formula given.

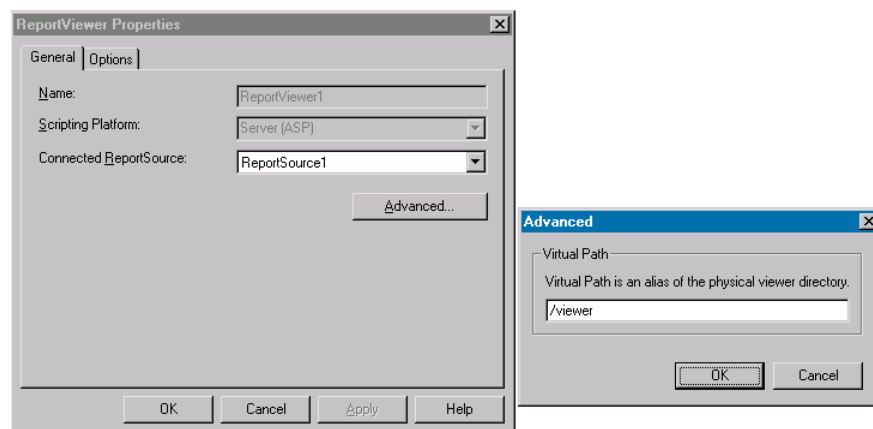


Using The ReportViewer DTC

The ReportViewer DTC is placed on the web page after the report source. There are only 2 tabs on the ReportViewer DTC's properties.

The General Tab

The General Tab has a Connected Report Source will be set to the ReportSource control on the page (usually ReportSource1). The Advanced button is used to point to the virtual directory where the viewers are located. Crystal Reports will install the viewers into the viewer virtual directory on the website that was designated to have applications install to by default in IIS.

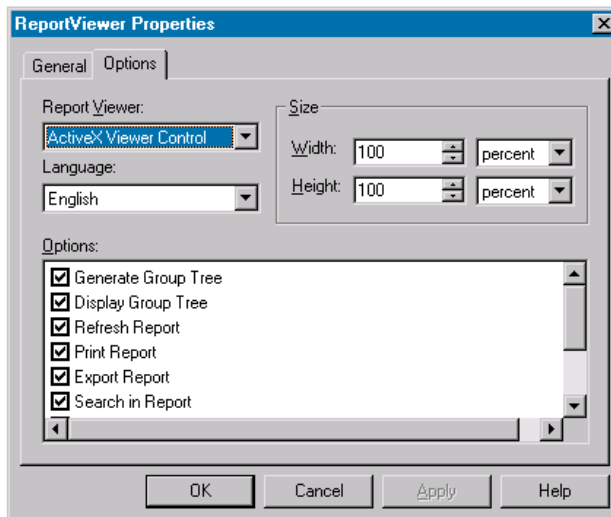


The Options Tab

The Options Tab allows the user to set which viewer they would like to send to the client machine to view the report. There is also an option to choose the

language of the viewer. This is dependant on the fonts and browser language support installed on the current system.

The viewers are customizable. The size of the viewer can be set on this tab as well as what functionality to give the end user.



Extending the ASP Code

The Crystal Reports DTC controls for Visual Interdev allow easy report integration into ASP projects. The DTC just scratches the surface of what can be done with Crystal Reports and the RDC object model.

The code can be modified by right clicking both DTC controls and choosing the option to convert to runtime text. This will show the code behind the controls. The code can be modified to use the various properties of the RDC. There is more information on the properties of the RDC in the Developer's help file.

There are many examples using ASP to bring up Crystal Reports. They can be found in the ..\Program Files\Seagate Software\Crystal Reports\Sample\Code\Web\Active Server Pages directory. There are also some additional examples located in the files and updates section of our support website at:

<http://support.crystaldecisions.com>

The file with the version 8 samples is called Aspxmps8.exe.

Contacting Crystal Decisions for Technical Support

We recommend that you refer to the product documentation and that you visit our Technical Support web site for more resources.

Self-serve Support:

<http://support.crystaldecisions.com/>

Email Support:

<http://support.crystaldecisions.com/support/answers.asp>

Telephone Support:

<http://www.crystaldecisions.com/contact/support.asp>