

WHAT'S NEW: BUSINESSOBJECTS XI 3.0

Key Benefits

BusinessObjects XI 3.0 brings users and information together with a highly interactive experience built on an open BI platform that connects to any environment.

The industry's most advanced and complete platform for enterprise performance management, reporting, query and analysis, and enterprise information management, BusinessObjects XI 3.0 is:

- Connected
- Interactive
- Open

INTRODUCING BUSINESSOBJECTS XI 3.0

Track, understand, and manage your organization's information on a single enterprise business intelligence (BI) platform. With BusinessObjects™ XI, you get a complete suite of performance management, information management, reporting, and query and analysis tools built on a flexible, scalable, service-oriented architecture. BusinessObjects XI simplifies the way your decision-makers access, use and share insight across the organization.

BusinessObjects XI 3.0 is the latest major release of the BI product suite from Business Objects, an SAP company. Building on the BusinessObjects XI platform, BusinessObjects XI 3.0 delivers the industry's most connected, interactive, and open BI solution for any organization. Designed to shed light on your business problems, BusinessObjects XI 3.0 provides substantial functional improvements and innovations across the BusinessObjects suite.

This "What's New" document provides a high-level overview of the capabilities of BusinessObjects XI 3.0. This document covers the following product areas:

- BusinessObjects XI 3.0 Overview
- Reporting
- Query and Analysis
- Dashboards and Data Visualization
- Live Office
- Mobile
- BusinessObjects Enterprise (BI platform)
- SAP Integration
- Migration

BUSINESSOBJECTS XI 3.0 OVERVIEW

BusinessObjects XI 3.0 connects your users together by removing boundaries for sharing information. Our suite of innovative functionality benefits all types of users – analysts, casual users, managers, and executives – and transcends company walls to customers and partners. In addition to an interactive user experience that brings your users together, BusinessObjects XI 3.0 offers everyone an easy-to-use-and-adopt solution that simplifies the way users share insights. BusinessObjects XI 3.0 is open and works within any organization's environment, whether that is an SAP or Oracle application or a Teradata database.

At Business Objects, every product release and version is built around guiding principles based on key customer and market requirements. The guiding principles for BusinessObjects XI 3.0 are:

- **Make BI pervasive, actionable, and personal** to the way people use it while offering a full-spectrum solution for all their BI needs
- **Deliver innovative functionality** to drive productivity across an organization

- **Maintain simplicity** for all types of users to drive more BI adoption, thereby improving organization-wide decision-making processes
- **Provide enhanced migration tools** to ease upgrades for existing customers
- **Make Business Objects solutions work within any application environment**
- **Continue to deliver a proven and trusted BusinessObjects XI platform** with extensive system and language support

The key benefits for BusinessObjects XI 3.0 include:

- **Connecting users with information**, providing a complete BI solution to facilitate information sharing
- **An interactive user experience**, making it easy to get the information your users want, in the way they want, and when they want
- **An open BI solution**, providing flexibility in working with any application or database environment

REPORTING

Crystal Reports

New Crystal Reports® 2008 delivers advanced functionality to help reduce report proliferation and maintenance, increase report design power, and save time with high-productivity design features. This new product release is designed to provide the following key advantages:

- **Extensive report consumption.** You can answer more questions with one report, reducing the overall report count. Key features include interactive data sorting, parameter filtering, and report reformatting without refreshing the database.
- **Interactive report visualization.** Xcelsius® models can now be embedded into Crystal Reports, so your users can perform interactive what-if analysis within a report. New ability to import Adobe Flash and Flex applications to Crystal Reports helps you build more effective interactive data presentations.

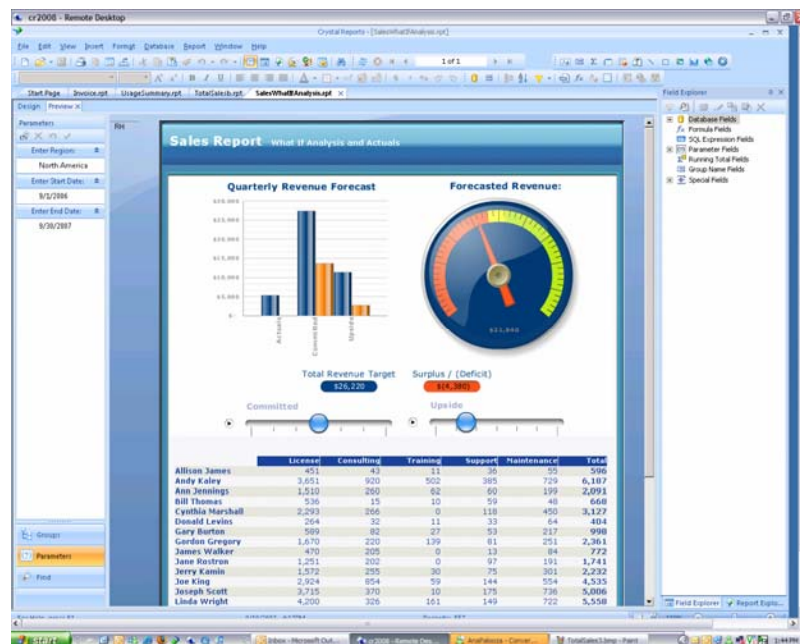


Figure 1: On-Report What-If Analysis

- **New flexible deployment options.** New features include integration with crystalreports.com for on-demand report management and sharing, improved XML export for reporting in virtually any industry-standard format, and advanced publishing features for distributing high-volume personalized report content to a dynamic list or recipients.
- **Enhanced designer productivity.** Improvements include built-in barcode support, inserting calculations into crosstab rows or columns without coding, and a hyperlinking wizard for quickly opening BusinessObjects Enterprise files.
- **Flexible application integration.** New data drivers support reporting off salesforce.com data and provide additional access to Web services through support for RPC encoding of SOAP messages, SSL secured Web servers, and compatibility with WS-Security standard.
- **Streamlined, flexible, improved report designer.** Improvements include a single edition that meets all designer and developer requirements, multilingual reporting capability, and a reduced footprint for install pack and distributable files – facilitating fast installation and deployment with applications.

QUERY AND ANALYSIS

BusinessObjects Web Intelligence

BusinessObjects Web Intelligence® makes it even easier for your users to answer any business question, no matter where they are. Use Web Intelligence to answer your questions when connected to your data sources, or when you are on the road and completely disconnected. BusinessObjects Web Intelligence XI 3.0 delivers the following new capabilities:

- **Web Intelligence rich client.** Enjoy freedom of analysis anywhere with the new off-line mode for analysts on the go. Users can still continue analyzing or modifying the report layout right from their desktop with no Internet connection. Data synchronization is seamless so no manual updates are required.

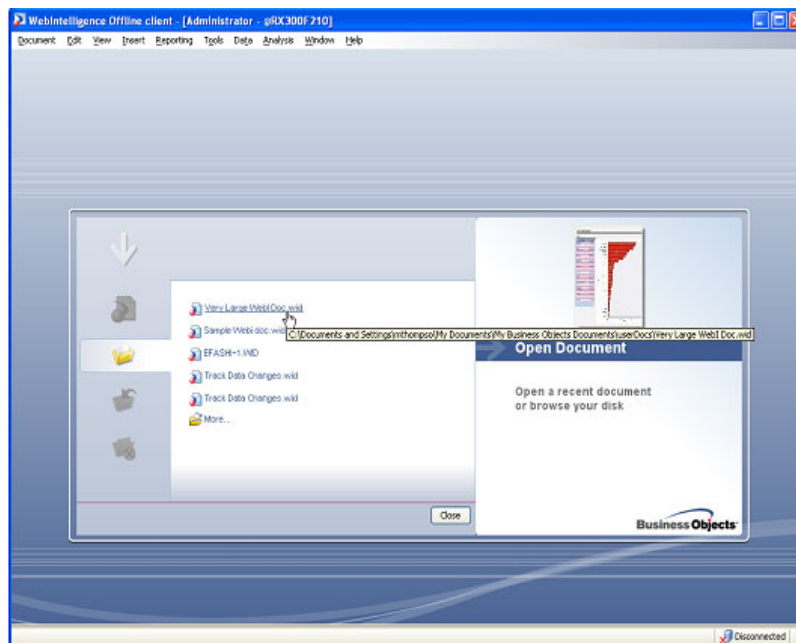


Figure 2: Continue Your Analysis While Working Offline

- **Track data changes.** Quickly see the data changes in your reports after a refresh. Changes in the report (increases, decreases, addition, and deletion of data) are highlighted with different colors which are customizable.

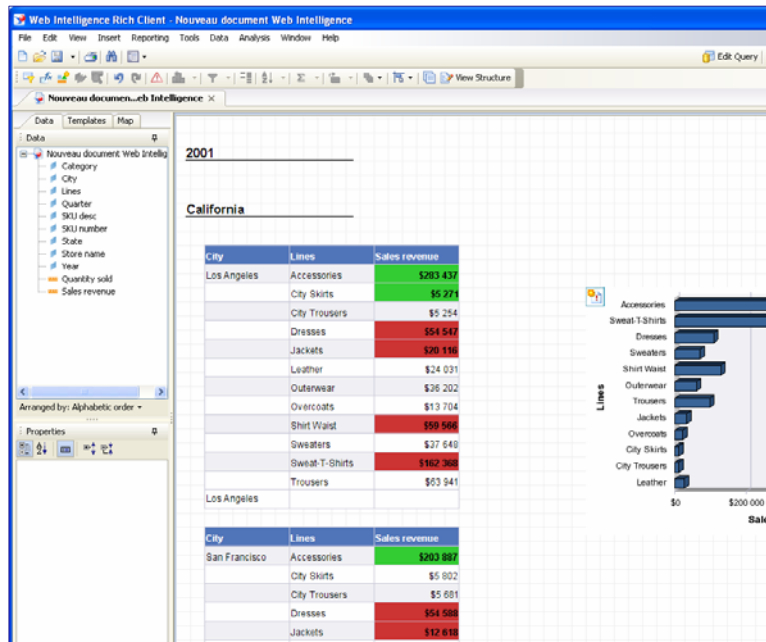


Figure 3: Know Immediately What Has Changed

- **Personal data provider.** Combine personal data from Microsoft Excel, CSV, and txt files and incorporate data into a single report, which can then be shared with other users through BusinessObjects Enterprise.

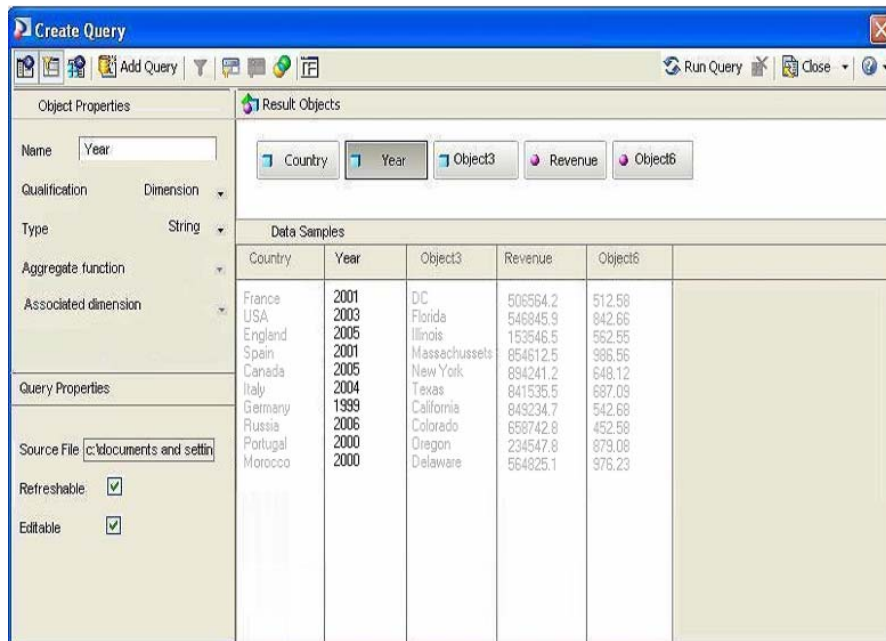


Figure 4: Bring in Excel, CSV File Data Easily

- **Hyperlinking capabilities made easier.** Create contextual hyperlinks from your document to external Web pages or other Web Intelligence reports in your environment. For example, link your customers' company locations to Google Maps for a geographical representation of your customer base.
- **Smart cubes.** Free users from the data complexity and avoid potential errors due to a lack of understanding of the data. Non-additive measures will be added in the universes, and universe designers will be able to define non-additive measures, such as percentages and ratios, or use database analytical functions.
- **Multilingual metadata and prompt support.** Dimensions, measures, and prompts associated with universes are now automatically localized to the report viewer's language.
- **New formula functions.** Many new formulas added to the formula function library enhance Web Intelligence usability and new analysis possibilities.
- **Native printing.** With the Web Intelligence rich client and the Web Intelligence applet available, users can print their reports using native print drivers, removing the need to go through PDF.
- **Image embedding.** With Web Intelligence XI 3.0, your users can easily embed images in their reports.
- **Stored procedures.** With Web Intelligence XI 3.0, your users can create reports based on stored procedures, which are defined at the universe level so all users can easily leverage them.

DASHBOARDS AND DATA VISUALIZATION

BusinessObjects Dashboard Builder

BusinessObjects XI 3.0 enhances the repackaging of Dashboard Manager into Dashboard Builder with dashboard layout capabilities and universe-based visualization templates.

Dashboard creation in XI 3.0 has been streamlined with an Asynchronous JavaScript and XML (AJAX) user interface for improved interactivity and simplified workflow and editing layout. This new capability comes with the BusinessObjects Dashboard Builder product. The metrics engine, rules, alerts, collaboration, and recommended next steps make up BusinessObjects Performance Manager.

Xcelsius Enterprise 2008

This release of Xcelsius works with both BusinessObjects XI Release 2 and XI 3.0, and delivers an even better data visualization along several fronts:

- Improvements that enhance the designer and user experience
- Real-time dashboarding capabilities
- Tighter integration with Business Objects products

BusinessObjects XI 3.0 improves the design and user experience for Xcelsius users. The Excel mapping process now resides inside the Xcelsius Enterprise designer tool, thereby eliminating the need to open Excel. While Excel spreadsheets are still supported as a data source, you'll never need to re-import a spreadsheet to adjust formulas or formats. This change simplifies the building process while helping to alleviate IT concerns around using Excel as a BI tool.

A software development kit (SDK) is available to design and create new visual components or analytics for Xcelsius. This set of development tools and documentation enables your designers to add skins and components to the designer library. This enhancement extends your ability to create custom dashboard components using Xcelsius Enterprise and then laying out these analytics inside Dashboard Builder.

Xcelsius 2008 incorporates improvements that enable you to create robust dashboards more easily. New features include updates to the user interface and component browser. The ability to cut and paste analytics from one .xlf to another avoids redundancy. The enhancements also simplify data manipulation and selection, and reduce the number of queries needed for live data connectivity.

Integration with Adobe LiveCycle Data Services (LCDS) enables real-time dashboards. LCDS offers a push mechanism from real-time data systems. With LCDS integration, you can update Xcelsius models based on changes in events, such as reaching a sales goal for a new product launch.

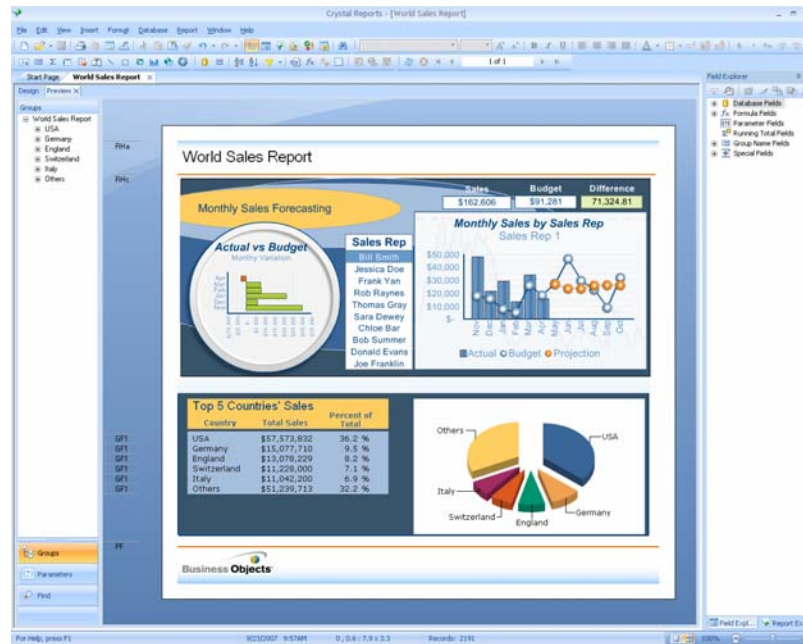


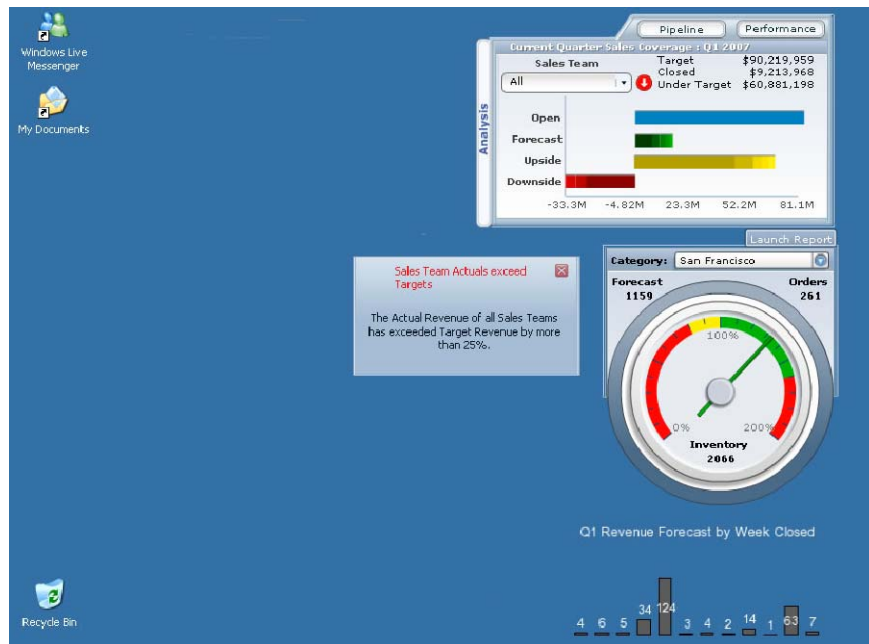
Figure 5: Embed Xcelsius Analytics in Crystal Reports for More Interactivity

BusinessObjects XI 3.0 also provides tighter integration with other Business Objects products. For example, Xcelsius lets you export a visual model into Crystal Reports. Pairing your detailed data with a summarized visualization enables you to deliver information in more compelling way. Also, the Xcelsius Enterprise release continues to enhance connectivity to Business Objects universes and simplifies the ease of creating Web services for consumption by Xcelsius components. Moving these enterprise dashboards from development to production will be enhanced through life cycle management.

BI Widgets

New to the BusinessObjects Enterprise platform is BI Widgets, a widget framework that delivers at-a-glance intelligence to everyone – from the CEO to the newest hire, right on their desktops. BI Widgets makes key information simple to access and easy to monitor without having to change your existing BI infrastructure. BI Widgets extends insight from existing BI content to new audiences and increases user self-sufficiency, while leveraging Business Objects BI platform capabilities – such as the existing repository and security model. Your end-users can search multiple BusinessObjects Enterprise repositories and then drag and drop Xcelsius files and Web Intelligence report parts as widgets onto their Microsoft Windows XP or Vista desktop environments. Additionally, users can receive RSS feeds and alerts to their desktop.

Figure 6:
Information
Delivered to
You Right at
Your Desktop



LIVE OFFICE

Live Office in BusinessObjects XI 3.0 extends the reach of Live Office within the Microsoft Office environment with search capabilities, Outlook integration, and Office 2007 ribbon support. You will be able to easily move Live Office objects between your Office documents via cut and paste. Customers will also benefit from universe-level security, query panel enhancements, and user-specified viewing locale.

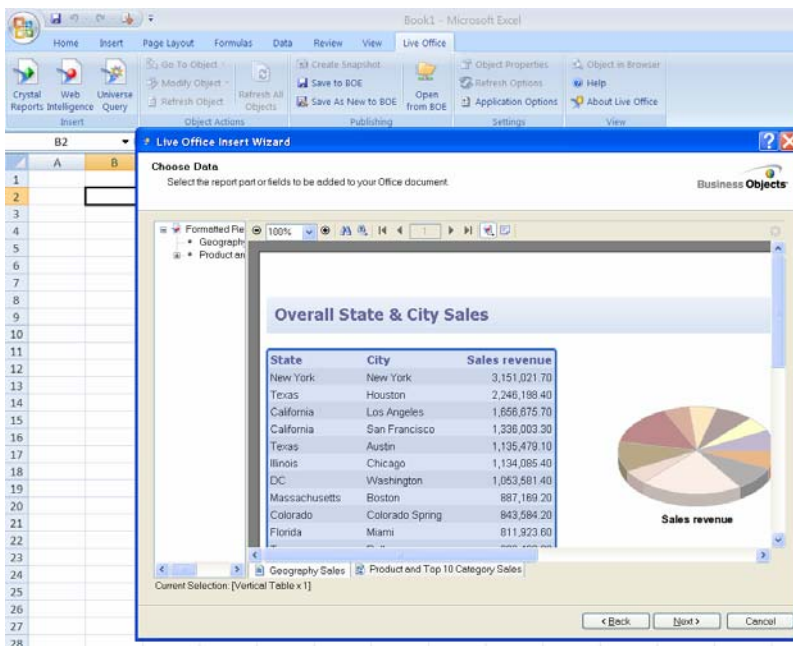


Figure 7: Insert
Data from
Reports and Ad
Hoc Queries into
Your Microsoft
Office Documents
Easily

MOBILE

This second version of Mobile provides more flexibility and portability. With offline access, users can view their reports at anytime, anywhere they are. Mobile also includes improved alerting capabilities so users get notified when a new report has been scheduled or modified. They can also define what types of alerts they want to receive right through their mobile device. These enhanced capabilities are designed to make BI on mobile devices even easier to use.

BUSINESSOBJECTS ENTERPRISE

With BusinessObjects XI 3.0, customers will find many improvements in BusinessObjects Enterprise, including easier information sharing and support for all users inside and outside their organization. For this release, BusinessObjects Enterprise offers several areas of improvements:

- Ease of deployment
- Improved system management capabilities to simplify your BI deployment administration while retaining the granularity and flexibility required by complex or global deployments
- Integration-ready with different applications and systems to extend the reach of BI to all users
- Personalization and scalable publishing to share the right information with the right people
- More semantic-layer functionality to drive ease of use and deployability

Ease of Deployment

BusinessObjects Enterprise XI 3.0 contains new capabilities to ease deployment especially across the organization. Specifically, the platform includes repository replication capabilities so that content created and managed on one deployment can be replicated on a recurring schedule. You can copy universe objects, reports, formatting, and security. This will help those companies that have multiple deployments to share and exchange the same type of information. You can perform unilateral or bilateral repository replication. This feature also reduces network traffic by replicating to the closest repository. In addition to this cost-saving benefit, the replication capability can help your organization exchange insight with customers or partners.

Streamlined Administration

BusinessObjects XI 3.0 contains many improvements to ease and simplify administration of BusinessObjects Enterprise, thereby reducing total cost of ownership. New administrative features include:

- **Server Intelligence.** This new capability allows organizations to clone server deployments, optimize default settings for servers, and monitor platform services.
- **Translation Manager.** This new tool providing provides multilingual content delivery and supports a single deployment in different languages.
- **Redesigned CMC.** The central management console (CMC) ensures greater flexibility and a higher granularity level to administrators managing enterprise BI deployments. Focus areas include:
 - New navigation, workflows, and menu structure for better usability
 - Improved user and group management
 - Relationship visualization, including relationship and security query rights management improvements

- Bulk action support, enabling you to execute actions on multiple selected objects (for example, add multiple objects to a category, update properties for multiple Crystal reports, and so on)
- Context aware actions, so actions that you do not have rights for are not enabled
- Custom access levels , allowing you to tailor group rights for targeted users, thereby reducing the complexity of security management
- Instance manager, letting you manage job scheduling, which is now integrated into the CMC
- Federation and server intelligence are both now managed in the CMC

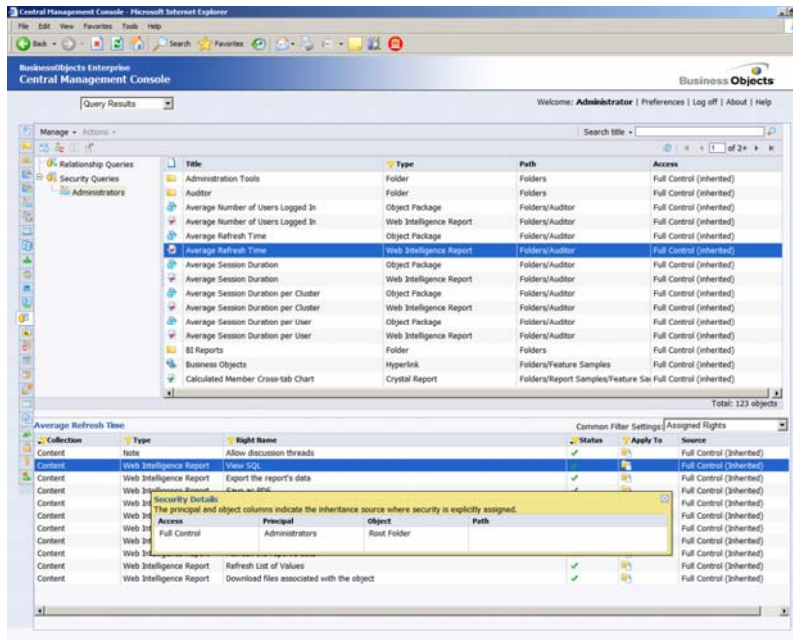


Figure 8: Intuitive Central Management Console

Publishing and Scheduling

Many new publishing and scheduling capabilities in BusinessObjects XI 3.0 allow for highly scalable and personalized sharing of information within and outside your organization. New features include:

- **Publication content.** Your publications may contain Crystal Reports, Web Intelligence, or Desktop Intelligence documents.
- **External recipients.** XI 3.0 supports publishing to external recipients as well as the building of the recipients list dynamically.
- **Document merging.** The product provides convenient packaging of multiple documents into one compressed zip file.
- **Delivery rules.** XI 3.0 supports conditional processing of a publication based on business rules.
- **Publishing processing extensions.** You can insert additional processing capability into the workflow via the creation of custom Java extensions.
- **Instance management console.** XI 3.0 provides an administrative tool to manage scheduled jobs, instances, and publications.
- **Import wizard.** XI 3.0 supports publications, users and groups, profiles, documents, schedules, and publications from a BCA Publisher system.

Federation

Federation is a new platform capability that:

- Simplifies insight sharing by automating movement of BI content between BusinessObjects Enterprise clusters
- Disperses BI content much faster, so your users only have to log in to one system to access all the insight they need to make better decisions
- Discovers new insight by combining BI content from several organizations, enabling ease of insight sharing with your customers and partners

Semantic Layer

The semantic layer includes many improvements as Business Objects continues to invest in this key technology. This includes the following enhancements:

- More power with online analytical processing (OLAP) universe enhancements, smart cubes, and stored procedures universes
- Multilingual universe support for object definitions and Web Intelligence document prompts
- Extended list of access via JavaBean and Java database connectivity (JDBC), Microsoft Analysis Services 2005, and BusinessObjects Data Federator connectivity
- New wizard to guide users through the different steps to create a file-based universe

SAP INTEGRATION

Business Objects XI 3.0 further enhances our product suite to meet the needs of all SAP users. BusinessObjects XI 3.0 provides an even tighter integration with the SAP environment to deliver the most complete, easy- to-use, BI solution for SAP customers. The continued benefits for SAP customers are:

- Lower cost of ownership
- Quicker to implement, so SAP customers receive value faster
- Flexibility to integrate with existing and future SAP environments
- An even more intuitive SAP end-user experience, especially in the area of self-service reporting and analysis

For the BusinessObjects XI 3.0 environment, customers can expect improvements in the following product areas:

- Managing SAP® Business Information Warehouse (BW) universes
- Extended support for BW metadata
- Scalable publishing
- More seamless SAP portal experience

Better Manage and Customize SAP BW universes

BusinessObjects Designer enables popular universe design and maintenance capabilities when working with SAP BW universes. Enhancements include being able to refresh SAP BW universes to take into account SAP metadata updates, inserting new SAP BW objects, folders and query filters, and support for calculated key figures.

Extended Support for SAP BW Metadata and Prompting

BusinessObjects XI 3.0 fully leverages the metadata within SAP BW and delivers a familiar user experience for SAP users. New features include:

- Default organization of universe classes and objects that map with SAP BW metadata

- SAP BW variables set as optional and mandatory automatically surface on the Business Objects side as query prompts
- Default variables retrieved from SAP BW automatically appear in Web Intelligence
- Key date variables turn into interactive calendar-based query prompts, so that Web Intelligence and Crystal Reports users can pick calendar dates at runtime
- Currency or unit settings match corresponding specific universe objects
- Non-additive and semi-additive key figures (ratios) display as computed in SAP BW

Mass Publication of Personalized SAP Reports

Report publishing capabilities of BusinessObjects XI 3.0 enables single-pass report bursting and distribution of SAP Web Intelligence and Crystal reports. SAP administrators can also leverage the SAP profiles for enhanced personalization of reports.

Improved SAP Portal Integration

BusinessObjects XI 3.0 integrates with the SAP Knowledge Management Repository Framework Interface, so that not only are all popular BusinessObjects workflows enabled in the SAP NetWeaver® Portal, but also key capabilities of SAP NetWeaver Portal can transparently apply to objects in the BusinessObjects repository.

MIGRATION

Moving to BusinessObjects XI 3.0

Business Objects recognizes the need to minimize the cost of ownership for customers adopting the BusinessObjects XI platform. We provide a range of tools, documentation, and training to make your transition as effortless as possible. In addition to benefiting from the many new features discussed above, BusinessObjects XI 3.0 includes deployment enhancements that simplify and ease your migration process.

SUMMARY

As in previous XI releases, with BusinessObjects XI 3.0, Business Objects delivers on the promise of making BI more pervasive, actionable, and personal. With many enhancements and innovations across the entire product suite, Business Objects is making it even easier for your users to access and share information – regardless of who they are, where they work, and how they want to access information. BusinessObjects XI 3.0 strengthens the market's most powerful and complete BI platform, enabling you to meet all of your strategic BI requirements while ensuring delivery of the right information to the right users at the right time.

businessobjects.com



© 2008 Business Objects. All rights reserved. Business Objects owns the following U.S. patents, which may cover products that are offered and licensed by Business Objects: 5,555,403; 5,857,205; 6,289,352; 6,247,008; 6,490,593; 6,578,027; 6,831,668; 6,768,986; 6,772,409; 6,882,998; 7,139,766; 7,299,419; 7,194,465; 7,222,130; 7,181,440 and 7,181,435. Business Objects and the Business Objects logo, BusinessObjects, Business Objects Crystal Vision, Business Process On Demand, BusinessQuery, Crystal Analysis, Crystal Applications, Crystal Decisions, Crystal Enterprise, Crystal Insider, Crystal Reports, Desktop Intelligence, Inight, the Inight Logo, LinguistX, Star Tree, Table Lens, ThingFinder, Timewall, Let there be light, Metify, NSite, Rapid Marts, RapidMarts, the Spectrum Design, Web Intelligence, Workmail and Xcelsius are trademarks or registered trademarks in the United States and/or other countries of Business Objects and/or affiliated companies. All other names mentioned herein may be trademarks of their respective owners. Part # WS505-A