



How To... Change the Look and Feel of AFP Based Portal Using Theme Editor

Applicable Releases:

SAP NetWeaver 7.0 EhP2 and above

IT Practice:

User Productivity Enablement

IT Scenario:

Running an Enterprise Portal

Version 1.0

April 2010



© Copyright 2010 SAP AG. All rights reserved.

No part of this publication may be reproduced or transmitted in any form or for any purpose without the express permission of SAP AG. The information contained herein may be changed without prior notice.

Some software products marketed by SAP AG and its distributors contain proprietary software components of other software vendors.

Microsoft, Windows, Outlook, and PowerPoint are registered trademarks of Microsoft Corporation.

IBM, DB2, DB2 Universal Database, OS/2, Parallel Sysplex, MVS/ESA, AIX, S/390, AS/400, OS/390, OS/400, iSeries, pSeries, xSeries, zSeries, z/OS, AFP, Intelligent Miner, WebSphere, Netfinity, Tivoli, Informix, i5/OS, POWER, POWER5, OpenPower and PowerPC are trademarks or registered trademarks of IBM Corporation.

Adobe, the Adobe logo, Acrobat, PostScript, and Reader are either trademarks or registered trademarks of Adobe Systems Incorporated in the United States and/or other countries.

Oracle is a registered trademark of Oracle Corporation.

UNIX, X/Open, OSF/1, and Motif are registered trademarks of the Open Group.

Citrix, ICA, Program Neighborhood, MetaFrame, WinFrame, VideoFrame, and MultiWin are trademarks or registered trademarks of Citrix Systems, Inc.

HTML, XML, XHTML and W3C are trademarks or registered trademarks of W3C®, World Wide Web Consortium, Massachusetts Institute of Technology.

Java is a registered trademark of Sun Microsystems, Inc.

JavaScript is a registered trademark of Sun Microsystems, Inc., used under license for technology invented and implemented by Netscape.

MaxDB is a trademark of MySQL AB, Sweden.

SAP, R/3, mySAP, mySAP.com, xApps, xApp, SAP NetWeaver, and other SAP products and services mentioned herein as well as their respective logos are trademarks or registered trademarks of SAP AG in Germany and in several other countries all over the world. All other product and service names mentioned are the trademarks of their respective companies. Data contained in this document serves informational purposes only. National product specifications may vary.

These materials are subject to change without notice.

These materials are provided by SAP AG and its affiliated companies ("SAP Group") for informational purposes only, without representation or warranty of any kind, and SAP Group shall not be liable for errors or omissions with respect to the materials. The only warranties for SAP Group products and services are those that are set forth in the express warranty statements accompanying such products and services, if any. Nothing herein should be construed as constituting an additional warranty.

These materials are provided "as is" without a warranty of any kind, either express or implied, including but not limited to, the implied warranties of merchantability, fitness for a particular purpose, or non-infringement.

SAP shall not be liable for damages of any kind including without limitation direct, special, indirect, or consequential damages that may result from the use of these materials.

SAP does not warrant the accuracy or completeness of the information, text, graphics, links or other items contained within these materials. SAP has no control over the information that you may access through the use of hot links contained in these materials and does not endorse your use of third party web pages nor provide any warranty whatsoever relating to third party web pages.

SAP NetWeaver "How-to" Guides are intended to simplify the product implementation. While specific product features and procedures typically are explained in a practical business context, it is not implied that those features and procedures are the only approach in solving a specific business problem using SAP NetWeaver. Should you wish to receive additional information, clarification or support, please refer to SAP Consulting.

Any software coding and/or code lines / strings ("Code") included in this documentation are only examples and are not intended to be used in a productive system environment. The Code is only intended better explain and visualize the syntax and phrasing rules of certain coding. SAP does not warrant the correctness and completeness of the Code given herein, and SAP shall not be liable for errors or damages caused by the usage of the Code, except if such damages were caused by SAP intentionally or grossly negligent.

Disclaimer

Some components of this product are based on Java™. Any code change in these components may cause unpredictable and severe malfunctions and is therefore expressly prohibited, as is any decompilation of these components.

Any Java™ Source Code delivered with this product is only to be used by SAP's Support Services and may not be modified or altered in any way.

Document History

Document Version	Description
------------------	-------------

1.00	First official release of this guide
------	--------------------------------------

Typographic Conventions

Type Style	Description
<i>Example Text</i>	Words or characters quoted from the screen. These include field names, screen titles, pushbuttons labels, menu names, menu paths, and menu options. Cross-references to other documentation
Example text	Emphasized words or phrases in body text, graphic titles, and table titles
Example text	File and directory names and their paths, messages, names of variables and parameters, source text, and names of installation, upgrade and database tools.
Example text	User entry texts. These are words or characters that you enter in the system exactly as they appear in the documentation.
<Example text>	Variable user entry. Angle brackets indicate that you replace these words and characters with appropriate entries to make entries in the system.
EXAMPLE TEXT	Keys on the keyboard, for example, F2 or ENTER.

Icons





Icon	Description
	Caution
	Note or Important
	Example
	Recommendation or Tip

Table of Contents

1.	Business Scenario	1
2.	Background Information	1
3.	Prerequisites	1
4.	Step-by-Step Procedure	2
4.1	Activate the AFP	2
4.2	Change the Logo	3
4.3	Change the Splash Screen.....	3
4.4	Add Theme to Desktop.....	4
4.5	Change the number of levels in TLN	5
4.6	Change the number of levels in DTN	6
4.7	End user personalization	7
4.7.1	Full Screen Mode	7
4.7.2	Drag and Drop	7

1. Business Scenario

As a part of Corporate Branding, you may want to change the look and feel of Portal. In this guide, we will take you through the basic configurations to change the look and feel of Ajax Framework Page (AFP) based Portal. The basic configurations are enabled through standard features and tools offered with SAP NetWeaver Portal.

2. Background Information

Ajax Framework Page (AFP) has been introduced as an offering with SAP NetWeaver Portal 7.0 EhP1 release. The standard framework page which is the default framework page is still available for use. This guide helps to understand the customization of look and feel for AFP.

3. Prerequisites

- Software
 - SAP NetWeaver Portal 7.0 EhP2 and above

4. Step-by-Step Procedure

In this guide, we will cover the steps to change the look and feel of portal using standard tools and configurations.

4.1 Activate the AFP

1. In the portal navigate to System Administration -> Portal Display -> Desktop & Display Rules
2. Expand the portal content tree
3. Open portal administrators -> Super administrators -> Master Rules collection
4. Right click Master Rule Collection and select Open -> Rule Collection
5. On the editor select Add IF expression
6. On the user combo box select User
7. On the value input field enter character *
8. Now we have a condition if user = *
9. Click on the THEN statement of the new if expression.
10. In the content catalog go to portal content -> every user -> Standard portal users -> defaultAjaxFrameworkContent -> Ajax portal Desktop.
11. Right click on the Ajax Portal Desktop and select Add Portal desktop To Expression
12. Click Apply.
13. On the top of the editor click Save and close.

Add an IF Expression



Add a THEN Expression



4.2 Change the Logo

1. Navigate to System Administration -> portal Display -> Theme Editor
2. Click the any of the existing themes

Example

Click on Sap Tradeshow and the theme editor of SAP Tradeshow will open up.

3. Under Portal Outer Frame, click on the Ajax FWK: Masthead
4. Under the section Logo, browse and select the logo in the URL to Logo field

Example

In this example, we would use AFP_Logo.jpg as the Logo. The same as has been provided with this How-to Guide.

5. Click on 'Save as' button. Since the SAP Tradeshow is a built-in theme, we can not directly edit it but rather we should save as to create a copy and then edit the copy
6. Enter values for the fields Theme Name and Theme ID. Changing the Folder ID is optional. In this example we will leave the Folder ID with default value i.e. portal_content/themes

Example

In this example, we would enter Theme Name as AFP KE and Theme ID as afp_ke.

7. Click on Save button



4.3 Change the Splash Screen

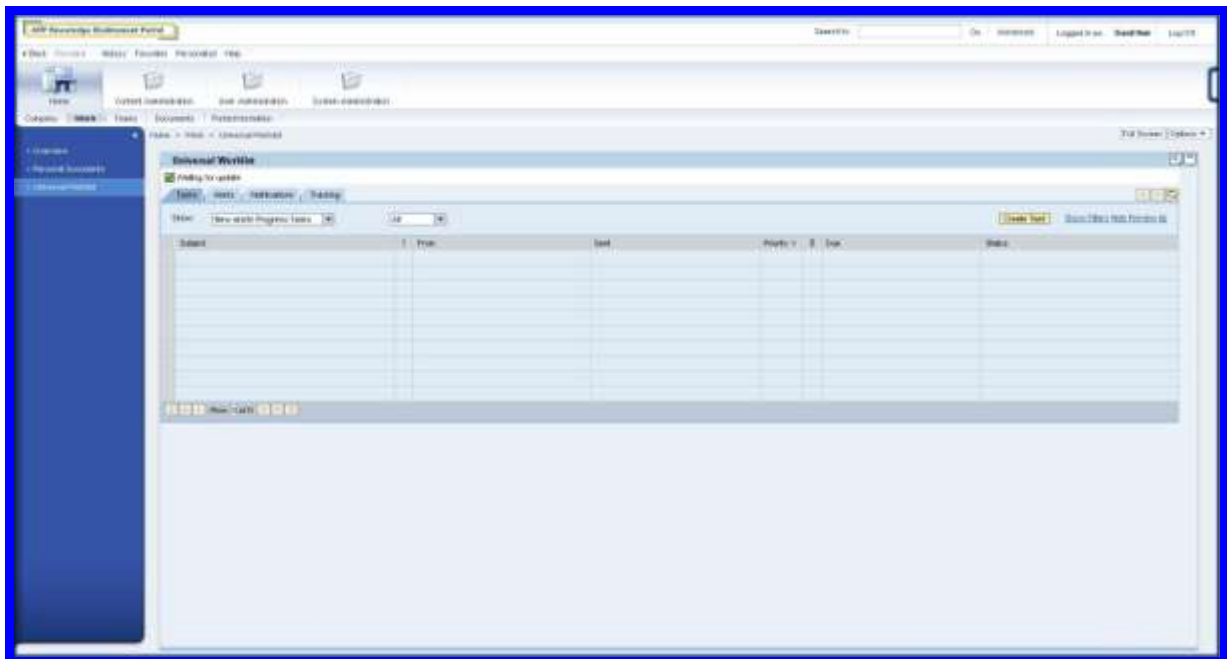
1. Go back to Theme Editor
2. Select Ajax FWK : Layout under Portal Outer Frame
3. Browse and select the image for the field URL to Splash Screen Image
4. Click Save



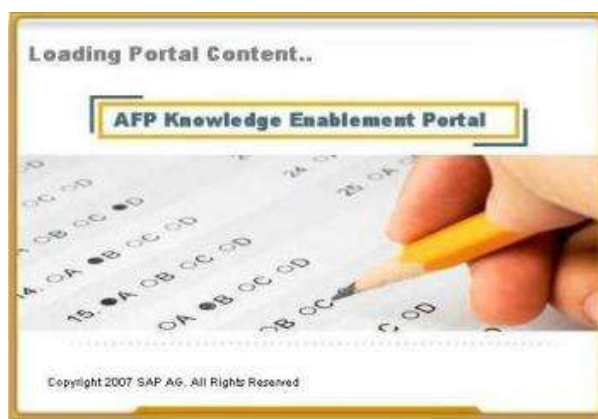
4.4 Add Theme to Desktop

1. Navigate to System Administration -> Portal Display -> Desktop & Display Rules
2. In the Portal Catalog, go to : Portal Content -> Every user -> defaultAjaxFrameworkContent
3. Right Click on the Ajax Portal Desktop and select open -> Object
4. Once the Desktop is open in the content catalog, go to Portal Content-> Themes
5. Right click on Pilot theme and select Add Theme to Portal Desktop
6. On the Desktop editor, select the AFP KE theme radio button (you might need to scroll down the table)
7. Press the Set Default Button
8. To view the changes, clear the browser cache and re-login to the Portal

New Logo Added:



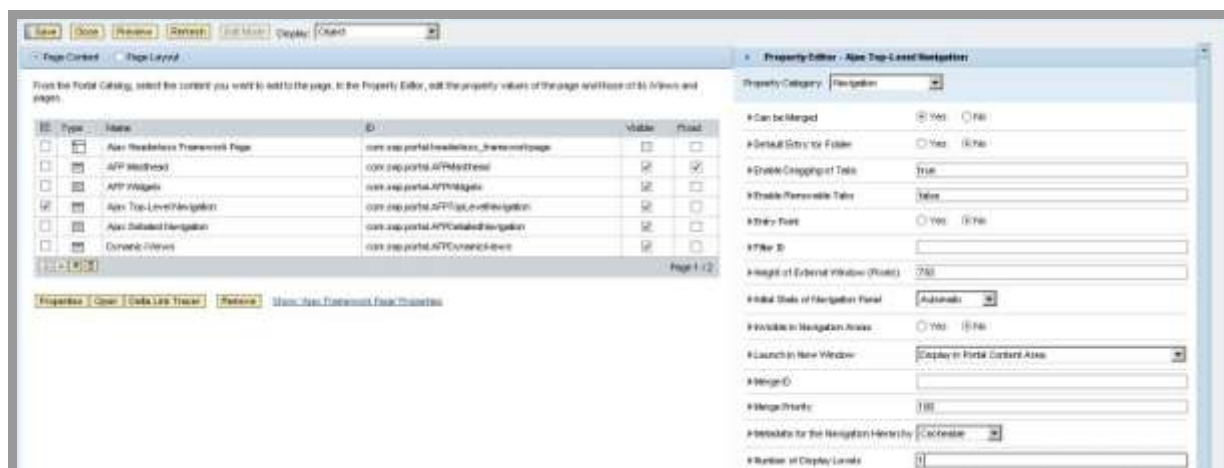
New Splash Screen added:



4.5 Change the number of levels in TLN

1. Navigate to "Content Administration"
2. In the Content Catalog, navigate to portal content -> every user-> Standard portal users-> defaultAjaxFrameworkContent
3. Right click on Ajax Framework Page and select open -> Object
4. Activate the check box on left side to select Ajax Top level navigation
5. Click open
6. In the iView property editor for Top level navigation, select the Property Category – Navigation
7. Change the value of property Number of Display Levels to 1
8. Click Save
9. Click close to close the property editor for Top level Navigation

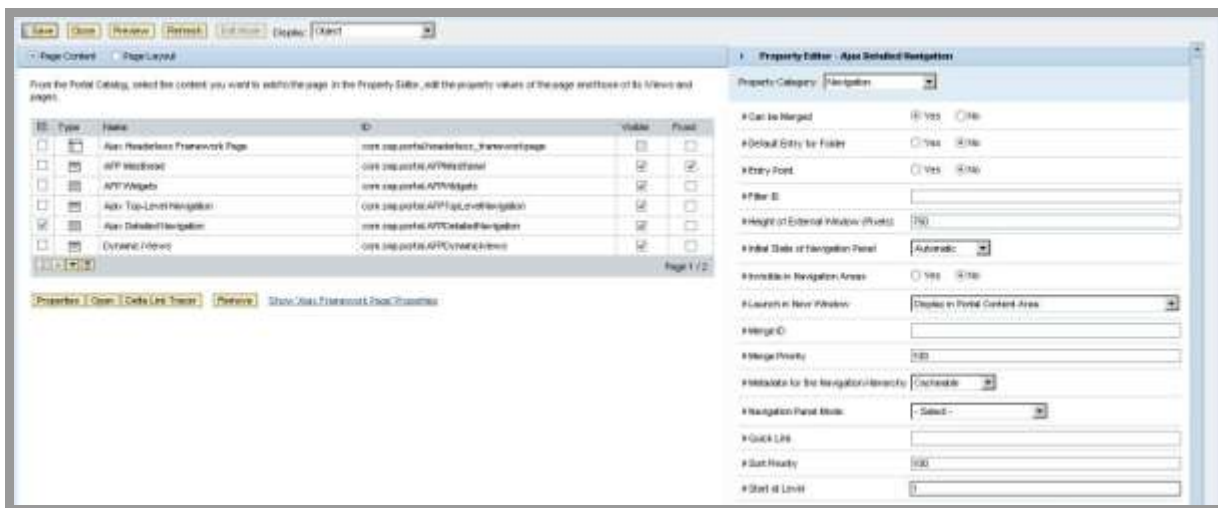
Setting the value of Top Level Navigation to 1:



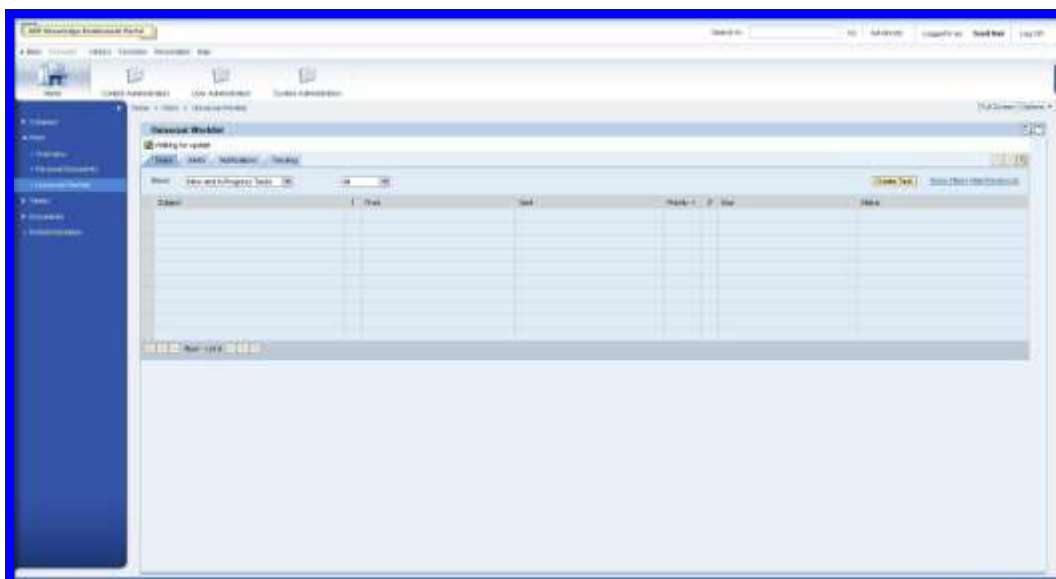
4.6 Change the number of levels in DTN

1. Activate the check box on left side to select Ajax Detailed Navigation
2. Click Open
3. In the property editor of Detailed Navigation iView, select the Property Category - Navigation
4. Set the value for property Start at Level to 1
5. Click Save
6. Close the property editor for Detailed Navigation
7. Close the Framework Page editor
8. To view the changes, refresh the browser

Setting the value of Start at Level for DTN to 1:



Display of Portal with TLN and DTN values set to 1:



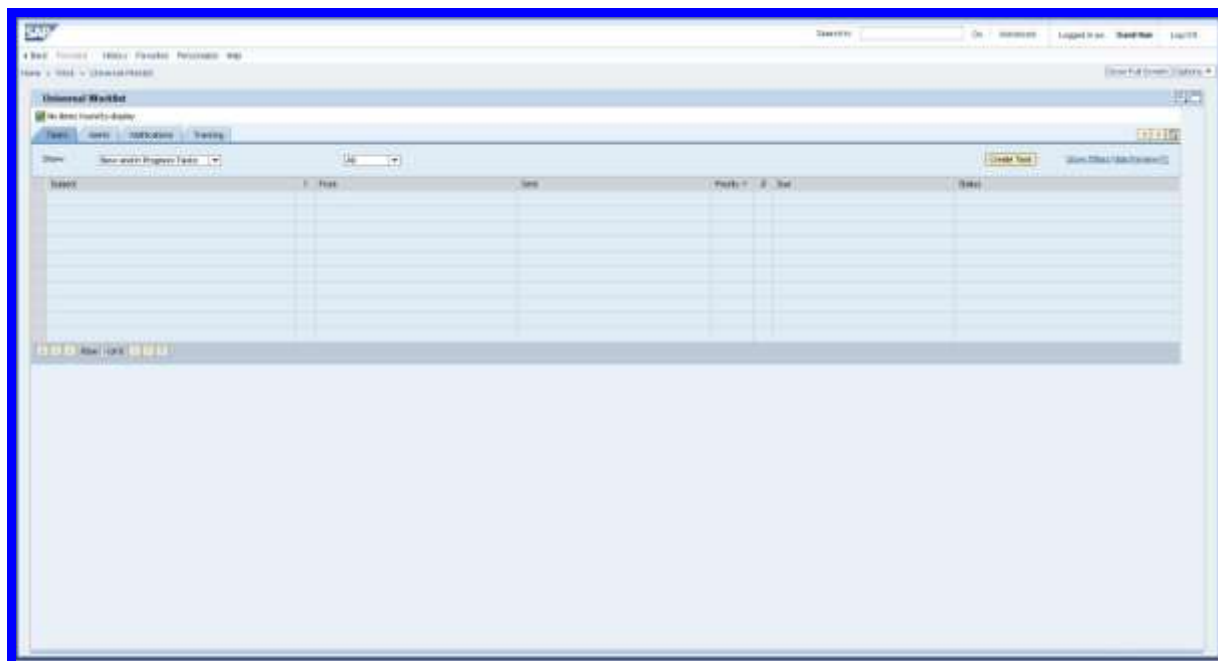
4.7 End user personalization

4.7.1 Full Screen Mode

The end user has an option to view the screen in the full screen mode. To do so, click on the button Full Screen on the right hand top corner of the Content Area. Similarly, to get back to the normal view mode, click on the button Close Full Screen.

Full Screen mode hides the Top Level Navigation and the Detail Level Navigation and focuses on the Content Area.

View in Full Screen Mode:



4.7.2 Drag and Drop

The drag and drop feature allows you to customize the sequence of entry points in the Top Level Navigation. The end user is empowered to drag an entry and drop it to another position in Top Level Navigation.

Before customization of sequence of TLN Tabs



Customization in action – Drag and Drop in action



Post Customization – After Drag and Drop action



www.sdn.sap.com/irj/sdn/howtoguides