

List of Values in BusinessObjects Web Intelligence Prompts



Applies to:

This solution is implemented for a combination of SAP NW BI 7.0 and SAP BO XI 3.1. For more information visit [Business Objects Home page](#).

Summary

This document describes a case study on how to populate the entire list of values (LOV) in BusinessObjects prompts instead of partial LOV's.

Author: Selvakumar Murugesan

Company: Mahindra Satyam

Created on: 21 October 2011

Author Bio

Selvakumar Murugesan is an SAP BI/BO consultant working for Mahindra Satyam. He has been part of various implementation and development projects.

Table of Contents

Introduction	3
SAP BI Master Data.....	3
SAP BO-WebI Prompts	4
Prompt with List of Values.....	4
Keep last values selected	4
Set Default Values	4
Select Only from List.....	4
Optional Prompt	4
Default WebI Parameters	7
Related Content.....	8
Disclaimer and Liability Notice.....	9

Introduction

In SAP BI/BO environment, when we try to search for a value in BusinessObjects (BO) Web Intelligence (WebI) prompts, at times we will get NO VALUES, though the value is present in back end SAP BI system. This article is used to populate the entire list of values (LOV) in BO-WebI prompts instead of partial set of values.

SAP BI Master Data

For every characteristic info object created in SAP BI, an SID table is being generated. An SID table will be in the form

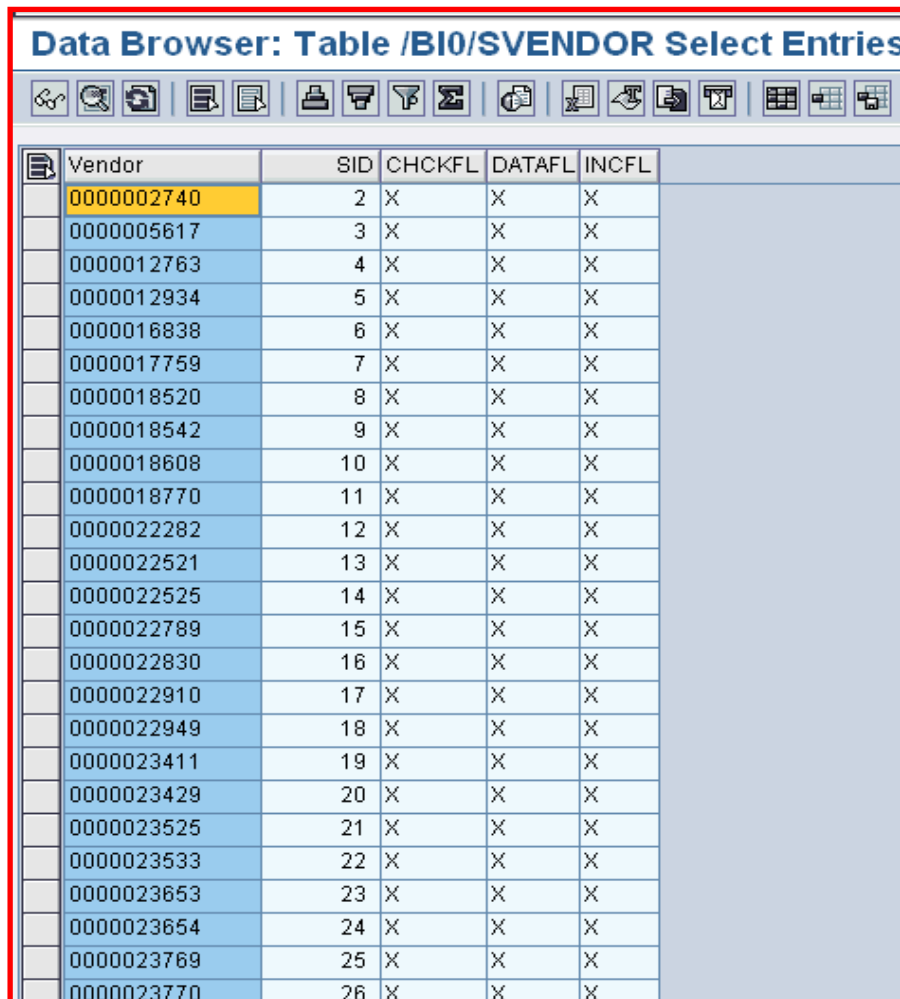
/BI0/S<XXX> for Standard Info Object

/BIC/S<XXX> for Customized Info Object

where XXX is the info object name.

A unique SID value is generated automatically when ever a data is populated for that info object. The SID value generated will be a numeric value and will be incremented for every new value.

Data Browser: Table /BI0/SVENDOR Select Entries

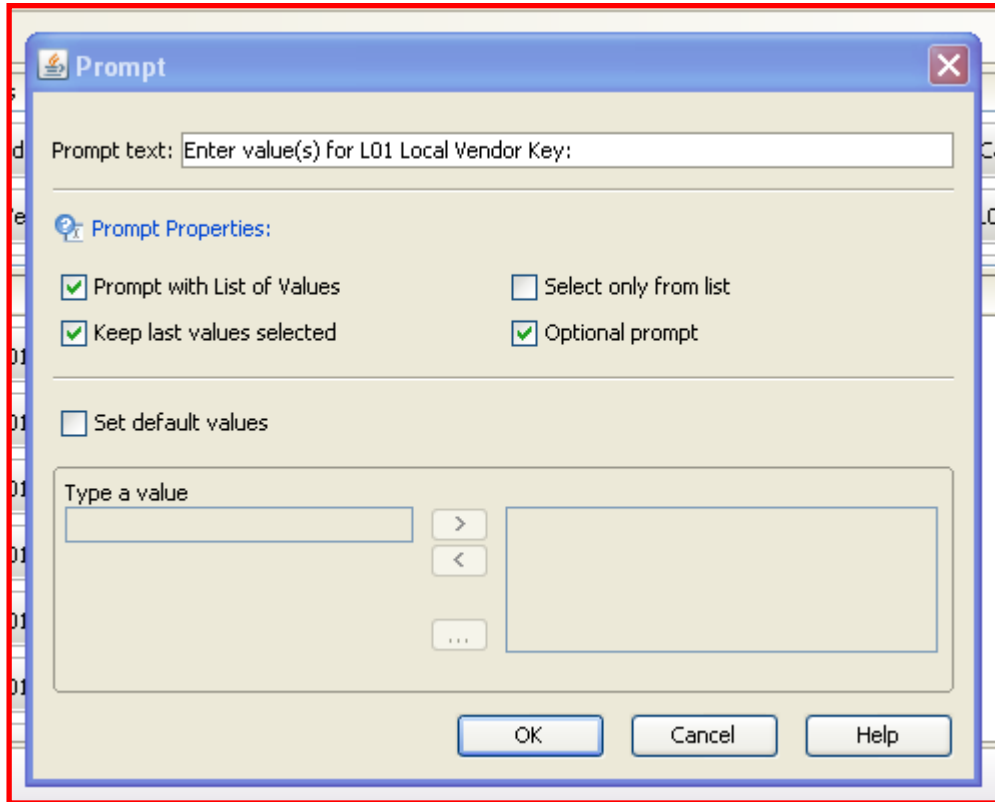


Vendor	SID	CHCKFL	DATAFL	INCFL
0000002740	2	X	X	X
0000005617	3	X	X	X
0000012763	4	X	X	X
0000012934	5	X	X	X
0000016838	6	X	X	X
0000017759	7	X	X	X
0000018520	8	X	X	X
0000018542	9	X	X	X
0000018608	10	X	X	X
0000018770	11	X	X	X
0000022282	12	X	X	X
0000022521	13	X	X	X
0000022525	14	X	X	X
0000022789	15	X	X	X
0000022830	16	X	X	X
0000022910	17	X	X	X
0000022949	18	X	X	X
0000023411	19	X	X	X
0000023429	20	X	X	X
0000023525	21	X	X	X
0000023533	22	X	X	X
0000023653	23	X	X	X
0000023654	24	X	X	X
0000023769	25	X	X	X
0000023770	26	X	X	X

SAP BO-WebI Prompts

In BO-WebI reports, prompts are created to restrict the data in report.

The properties of prompt are specified here.



Prompt with List of Values

This option is used to list all the values for the object and then select from those values.

Keep last values selected

This option is used often to reselect the same value(s) when you refresh the document, but want the ability to select a different value.

Set Default Values

This option is almost always reselect the same values(s) when you refresh the document but want the ability to select a different value when necessary.

Select Only from List

This option prevents users from typing a value that might not exist on the data base.

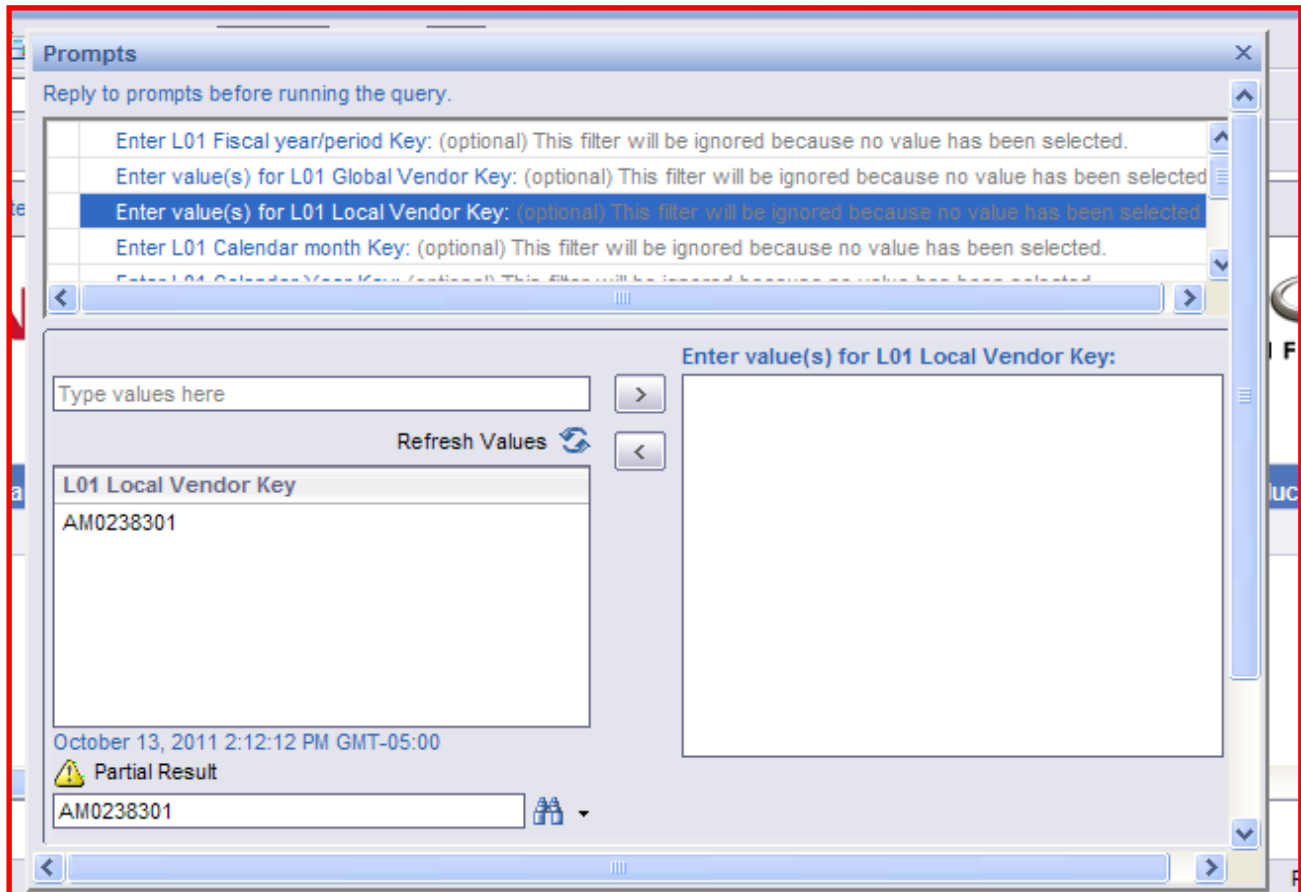
Optional Prompt

This option is to make the prompt as optional. The user is not obliged to specify a value for the prompt. In this case WebI ignores the prompt.

When the WebI report is executed, prompts are displayed for values to be entered. When we try to search for a value in prompt, at times it will show NO VALUE though the value is present in BI system.

The values of the prompts will be based on **SID values** generated.

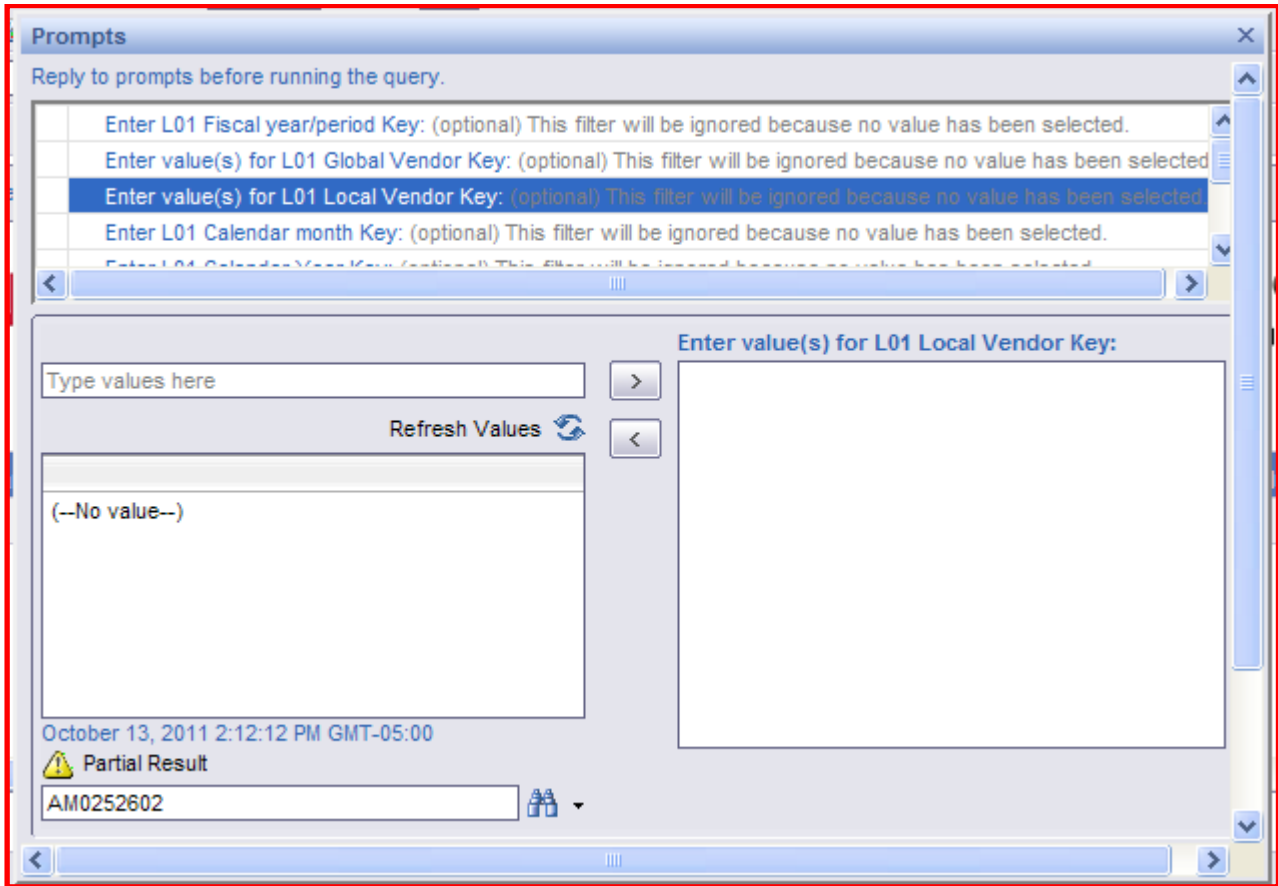
For instance, when trying to search for a value AM0238301 in prompt, it searches and finds the value.



SID generated for the value AM0238301 in SAP BI system is

Data Browser: Table /BI0/SVENDOR Select					
Vendor	SID	CHCKFL	DATAFL	INCFL	
AM0238301	50,000	X	X	X	

The same when we try to search for value AM0252602 in prompt. It displays as NO VALUE



When looking into the SID value for AM0252602 in BI system is 50026. The value is present in BI system but not shown in BO prompt.

Data Browser: Table /BI0/SVENDOR Sele

Vendor	SID	CHCKFL	DATAFL	INCFL
AM0252602	50,026	X	X	X

Default WebI Parameters

Default WebI parameters can be seen in the XML file “webi_client_default_param”.

To go to the file, navigate the path

Program Files > Business Objects > BusinessObjects Enterprise 12.0 > win32_x86 > config

Open the file webi_client_default_parameters in note pad to see the default settings of WebI client.

```
<PARAMETER NAME="WebiParamImageLocation" VALUE="" TYPE="string" ADMIN="true" />
<PARAMETER NAME="WebiParamMaxLovSize" VALUE="50000" TYPE="long" ADMIN="true" />
<PARAMETER NAME="WebiParamXMLTraceEnable" VALUE="true" TYPE="bool" ADMIN="false" />
<PARAMETER NAME="WebiParamActivityTraceEnable" VALUE="false" TYPE="bool" ADMIN="false" />
```

In the parameter name “WebiParamMaxLovSize”, the default value is set to 50000. This means that only first 50000 SID values will be populated as LOV in prompt.

Any SID value within 50000 will be populated in LOV and others will be ignored. In order to get the list of all values change the default value from 5,000 to max limit of data, say 200000. Now LOV in prompts will be max up to 200,000.

```
<PARAMETER NAME="WebiParamImageLocation" VALUE="" TYPE="string" ADMIN="true" />
<PARAMETER NAME="WebiParamMaxLovSize" VALUE="200000" TYPE="long" ADMIN="true" />
<PARAMETER NAME="WebiParamXMLTraceEnable" VALUE="true" TYPE="bool" ADMIN="false" />
<PARAMETER NAME="WebiParamActivityTraceEnable" VALUE="false" TYPE="bool" ADMIN="false" />
```

If you now check the values in the prompt, you can find it.

The screenshot shows the 'Prompts' dialog box in SAP BusinessObjects Web Intelligence. The dialog is titled 'Prompts' and contains a list of prompts. The 'L01 Local Vendor Key' prompt is selected, and its values are displayed in a list box. The values include 'AM0252602'. The 'Run Query' button is visible at the bottom of the dialog.

This will ensure that all values will be populated in LOV's.

Related Content

For more information visit [Business Objects Home page.](#)

Disclaimer and Liability Notice

This document may discuss sample coding or other information that does not include SAP official interfaces and therefore is not supported by SAP. Changes made based on this information are not supported and can be overwritten during an upgrade.

SAP will not be held liable for any damages caused by using or misusing the information, code or methods suggested in this document, and anyone using these methods does so at his/her own risk.

SAP offers no guarantees and assumes no responsibility or liability of any type with respect to the content of this technical article or code sample, including any liability resulting from incompatibility between the content within this document and the materials and services offered by SAP. You agree that you will not hold, or seek to hold, SAP responsible or liable with respect to the content of this document.