

SAP NetWeaver – Demo Model BW Content



Applies to

- SAP NetWeaver 7.0 SP16, including BW 7.0 SP18 or
- SAP NetWeaver 7.01 SP5 or
- SAP NetWeaver 7.20 SP1
- For more information, visit the [Business Intelligence homepage](#).

Check [note 1133935](#) to ensure that you have the correct software version.

Summary

The purpose of this article is to describe the content and usage of the SAP NetWeaver – Demo Model in the area of Business Warehouse (BW). The content is available as technical content in all SAP NetWeaver installations with the release level as mentioned above, even without installation of BW content. The content provides easy-to-understand Sales Info Providers and Queries which can be used for education and testing purposes. Furthermore, as part of the SAP NetWeaver – Demo Model it is used at SAP to ensure consistent demos, training material and documentation across all SAP NetWeaver technologies.

Author: Dr. Matthias Sessler

Company: SAP AG

Last update: 09 October 2009

Author Bio



In 2000, Dr. Matthias Sessler joined SAP and worked in SAP NetWeaver product management. Before joining SAP, Matthias developed parallel processing architectures and algorithms at CERN, where the World Wide Web was born. Since 2007 he has been a Demo Champion for the SAP NetWeaver demo portfolio. In parallel, as of 2008, Matthias is involved in SAP BusinessObjects solutions and the demonstration of integrated SAP BusinessObjects solutions.

Table of Contents

Objectives	3
Where to Find the Content.....	3
How to Activate the Content	3
BW Demo Content.....	7
Usage.....	8
Explore the BW Demo Content	8
Related Content.....	12
Disclaimer and Liability Notice.....	13

Objectives

The purpose of the SAP NetWeaver Demo Model is to simplify the usage of SAP NetWeaver capabilities such as Business Warehouse etc. by delivering simple examples which can be easily understood and used.

The Demo Model also comprises content in the area of Business Warehouse (BW). In the area of BW we provide ready-to-use BW InfoProviders, InfoObjects, and Queries. The BW InfoProviders are filled with up-to-date sales data respectively sales planning data.

In the documentation of SAP NetWeaver Business Warehouse the Demo Model is used where appropriate. For understanding the front end tools, you can use the provided InfoProviders and Queries.

Where to Find the Content

The InfoProviders, InfoObjects, and Queries are shipped with the BW technical content for any BW installation, and can be activated with one mouse click, even without installation of BW content. This is possible as of release

- SAP NetWeaver 7.0 SP16, including BW 7.0 SP18
- SAP NetWeaver 7.01 SP5
- SAP NetWeaver 7.20 SP1

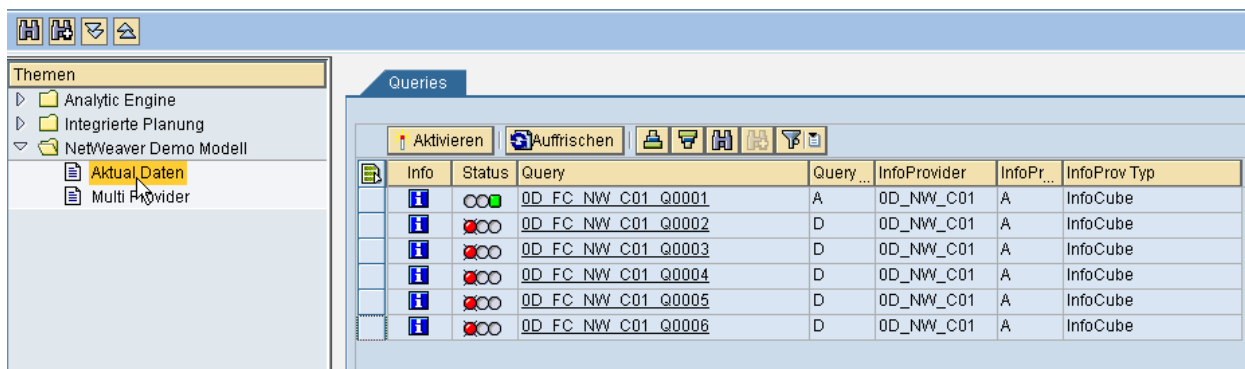
Note: please check note 1133935 for any additional notes which might have to be applied.

How to Activate the Content

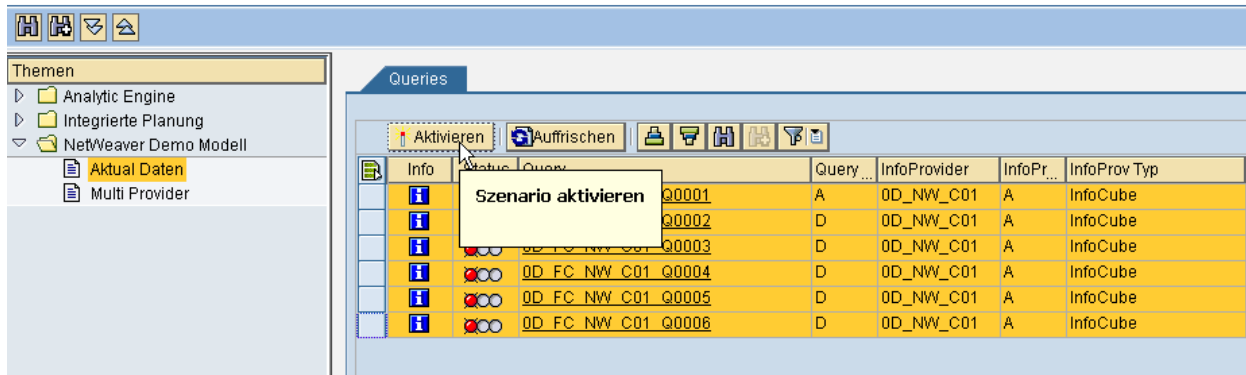
This section describes how to activate the SAP NetWeaver Demo Model in systems where it is delivered with the technical content.

1. Check if your system is at a suitable software version:
2. SAP NetWeaver 7.0 SPS16, including BW 7.0 SP18 (or higher)
3. SAP NetWeaver 7.01 SP5 (or higher)
4. SAP NetWeaver 7.20 SP1 (or higher)
5. Check note 1133935 if you have to apply additional notes depending on the software version
6. Logon to your system
7. Choose transaction **/rsfc**
8. Select area NW Demo Model

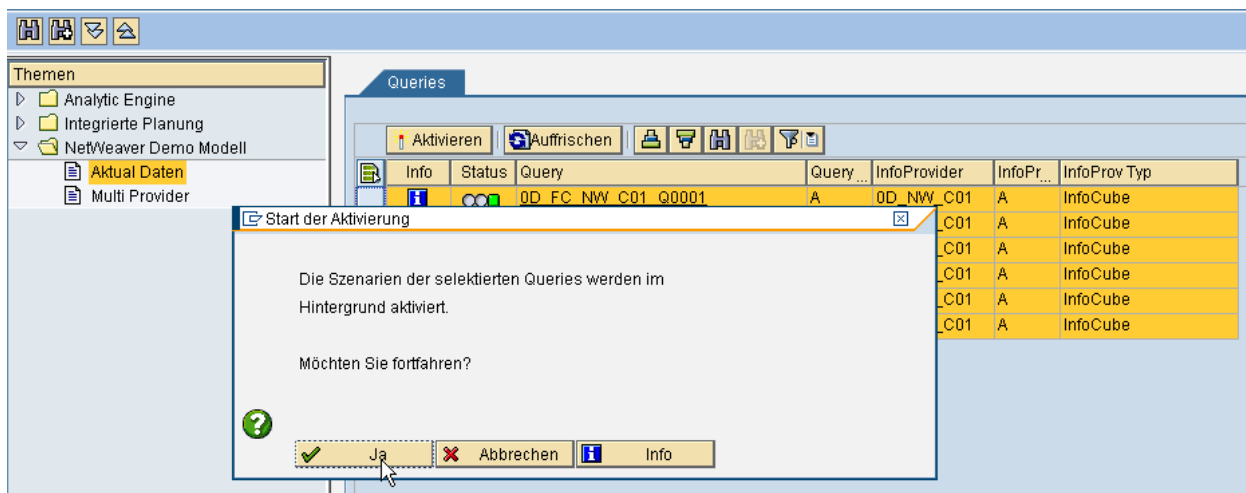
DemoContent für Features



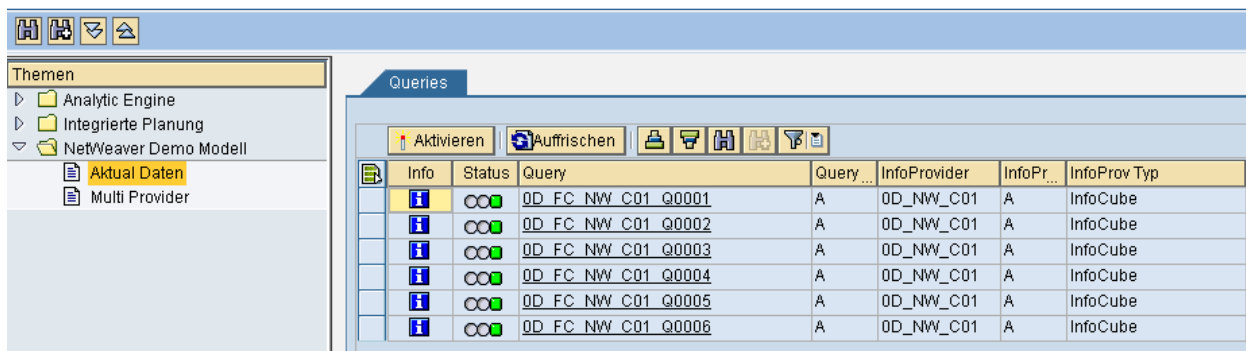
Info	Status	Query	Query ...	InfoProvider	InfoPr...	InfoProv Typ
		0D_FC_NW_C01_Q0001	A	0D_NW_C01	A	InfoCube
		0D_FC_NW_C01_Q0002	D	0D_NW_C01	A	InfoCube
		0D_FC_NW_C01_Q0003	D	0D_NW_C01	A	InfoCube
		0D_FC_NW_C01_Q0004	D	0D_NW_C01	A	InfoCube
		0D_FC_NW_C01_Q0005	D	0D_NW_C01	A	InfoCube
		0D_FC_NW_C01_Q0006	D	0D_NW_C01	A	InfoCube

9. Select the actual data queries and choose *Activate***DemoContent für Features**

10. Choose Yes

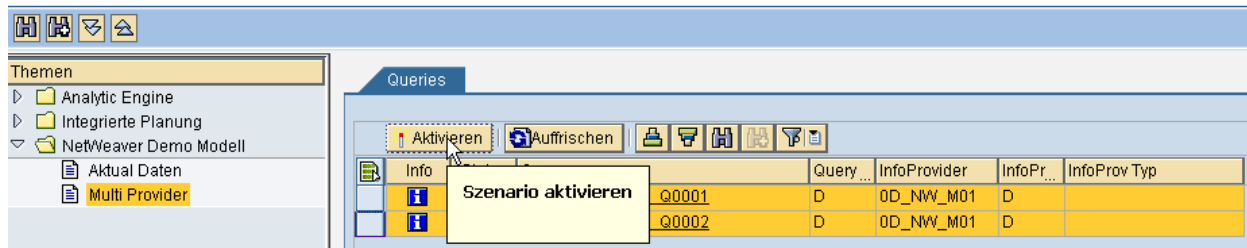
DemoContent für Features

11. After a refresh you see that the content is activated

DemoContent für Features

12. Select the planning data queries and choose *Activate* (if planning is of interest for you as well)

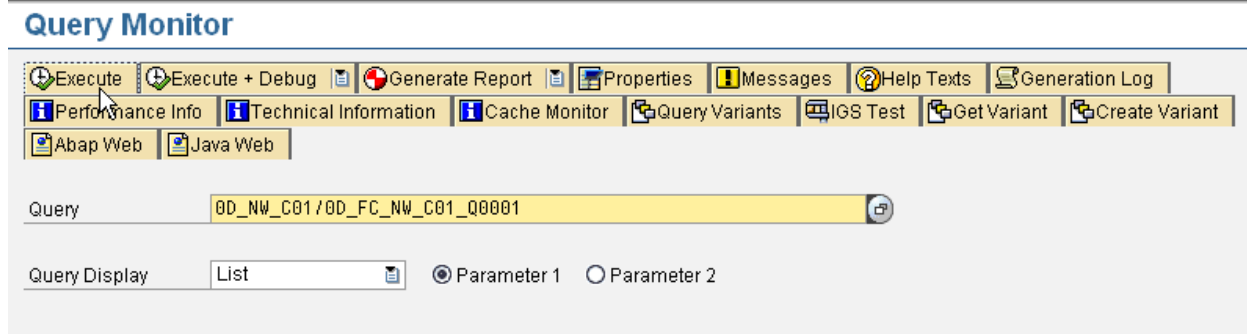
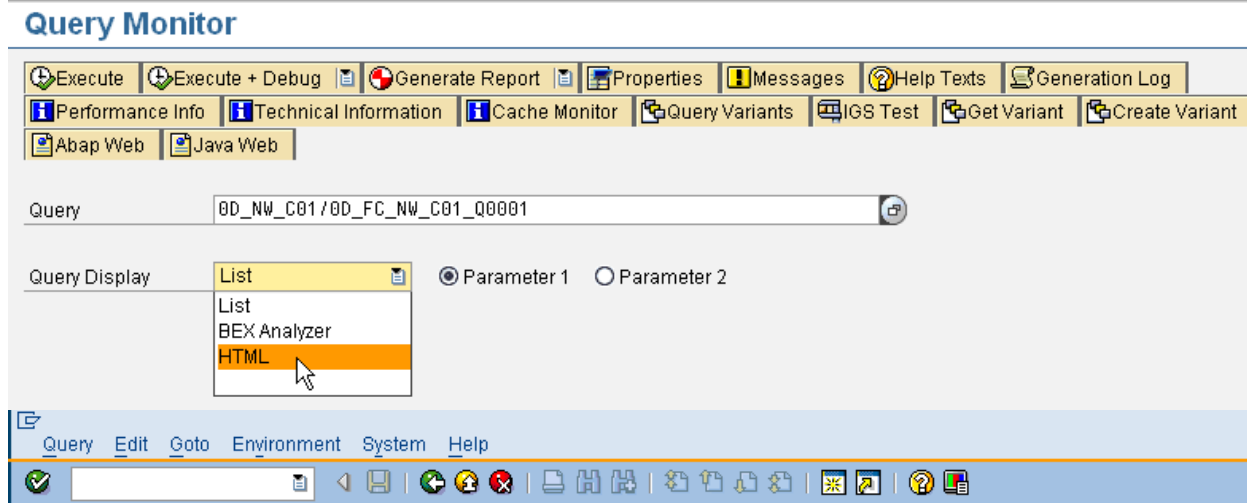
DemoContent für Features



Now you can already execute the queries using any front-end tool. Alternatively, you can design a universe to make the data available the appropriate BO tools.

A simple test in the backend system is using the transaction /rsrt

Enter the name of the query, e.g. 0D_NW_C01/0D_FC_NW_C01_Q001 and choose HTML as Query Display



13. Choose *Execute*

Query Monitor

Execute Execute + Debug Generate Report Properties Messages Help Texts Generation Log

Performance Info Technical Information Cache Monitor Query Variants IGS Test Get Variant Create Variant

Abap Web Java Web

Query 0D_NW_C01/0D_FC_NW_C01_Q0001

Query Display HTML Parameter 1 Parameter 2

The result should be:

Data Analysis Graphical display Information Information Broadcasting

0D_FC_I1W_C01_Q0001 Data Timeliness: 04.07.2008 13:34:52

Save View Bookmark Variable Screen Exceptions and Conditions Notes Export to Excel Export to CSV

Country	Product Category	Net Value in statistics currency (SAP NW Demo),...
DE	Mobile Devices	14.706.156,00 EUR
	Monitors	15.319.164,00 EUR
	Notebooks	15.876.176,00 EUR
	Result	45.901.496,00 EUR
FR	Mobile Devices	12.994.458,00 EUR
	Monitors	14.369.701,00 EUR
	Notebooks	17.784.604,00 EUR
	Result	45.148.763,00 EUR
GB	Mobile Devices	6.470.556,00 EUR
	Monitors	5.927.916,00 EUR
	Notebooks	7.697.723,00 EUR
	Result	20.096.195,00 EUR
US	Mobile Devices	41.410.115,00 EUR
	Monitors	26.960.052,00 EUR
	Notebooks	27.133.877,00 EUR
	Result	95.504.044,00 EUR
Overall Result		206.650.498,00 EUR

Now you can already drill down in the Free Characteristics etc.

BW Demo Content

- The technical name of all elements belonging to the SAP NetWeaver Demo Model BW starts with **OD_NW_** respectively **OD_FC_NW_**
 - you can search for **_NW_** in the technical name to find the relevant
 - InfoSources
 - InfoProvider
 - InfoObjects
 - DataSources
- The InfoArea is called NetWeaver Demo (OD_NW_DEMO)
- The package name of the BW part of the demo model is RS_TCO_NWDEMO

The following main elements of the SAP NetWeaver Demo Model can be used:

Object Type	Technical Name of Object	Description
InfoProvider	OD_NW_C01	Actual for NW Demo
InfoProvider	OD_NW_T01	Planning Cube
Query	OD_FC_NW_C01_Q0001	Revenue by Product Category and Country
Query	OD_FC_NW_C01_Q0002	Monthly Sales by Product Group
Query	OD_FC_NW_C01_Q0003	Europe and US Sales Orgs by Prod Group
Query	OD_FC_NW_C01_Q0004	Revenue for Europe and US Sales Orgs
Query	OD_FC_NW_C01_Q0005	YTD Sales by Sales Org
Query	OD_FC_NW_C01_Q0006	YTD Sales by Product Group
Query	OD_FC_NW_M01_Q0001	YTD plan/actual sales by Sales Org
Query	OD_FC_NW_M01_Q0002	Plan/Actual by Sales Org
InfoObjects, InfoSources	OD_NW_*	Several further InfoObjects and InfoSources required to use the InfoProviders and Queries above

Table 1

The InfoProviders are filled with data from January 2006 until December 2012. Therefore, to be more realistic, you should restrict the value range for the Calendar Year/Month in the queries to values in the past for the actual data and for values in the future in the plan data. You can work with dates relative to the current date, e.g. (Current Month-6) until (Current Month-1). This restriction can be done in the queries. For more information about working with variables and offset for the value range in characteristic restrictions, see Appendix 4. For more information about the provided Queries, see Appendix 2.

Usage

The demo model can be used to learn about BW backend and front-end capabilities. For the front-end tools you can start with either the InfoProviders or the Queries.

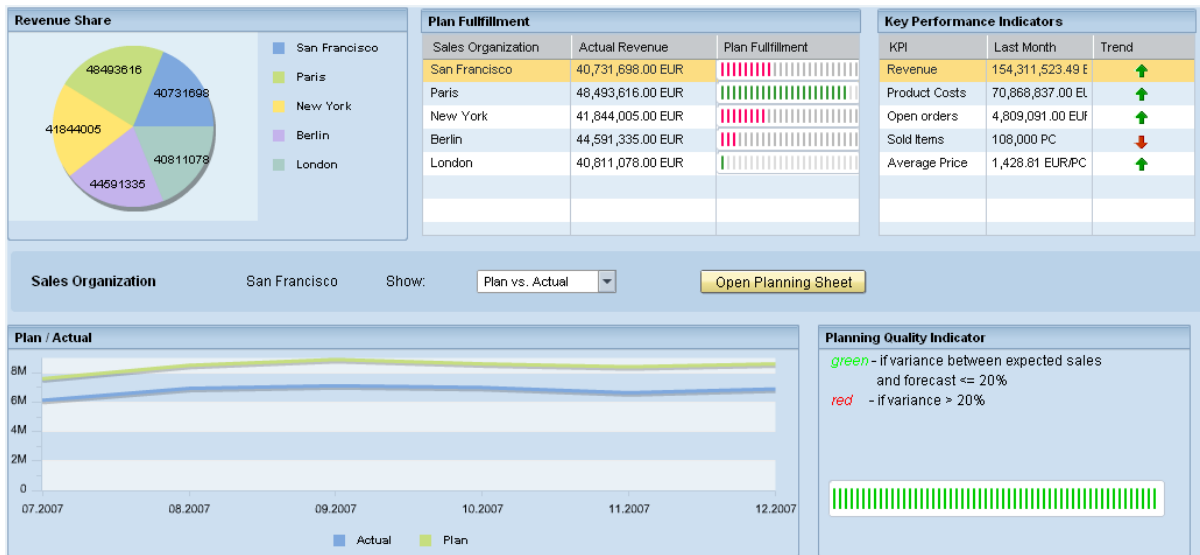
Explore the BW Demo Content

You can display the data with different front-end tools, such as Visual Composer Dashboard, BEx Web Application Designer, BEx Web Template, BEx Query Designer or Business Objects tools. Here are some examples.

Sales Analysis Dashboard (built in VC)



Sales Planning Dashboard (built in VC)



Execution of Query 0D_FC_NW_C01_Q004 in BEx Analyzer

Microsoft Excel - 0D_FC_NW_C01_Q0004

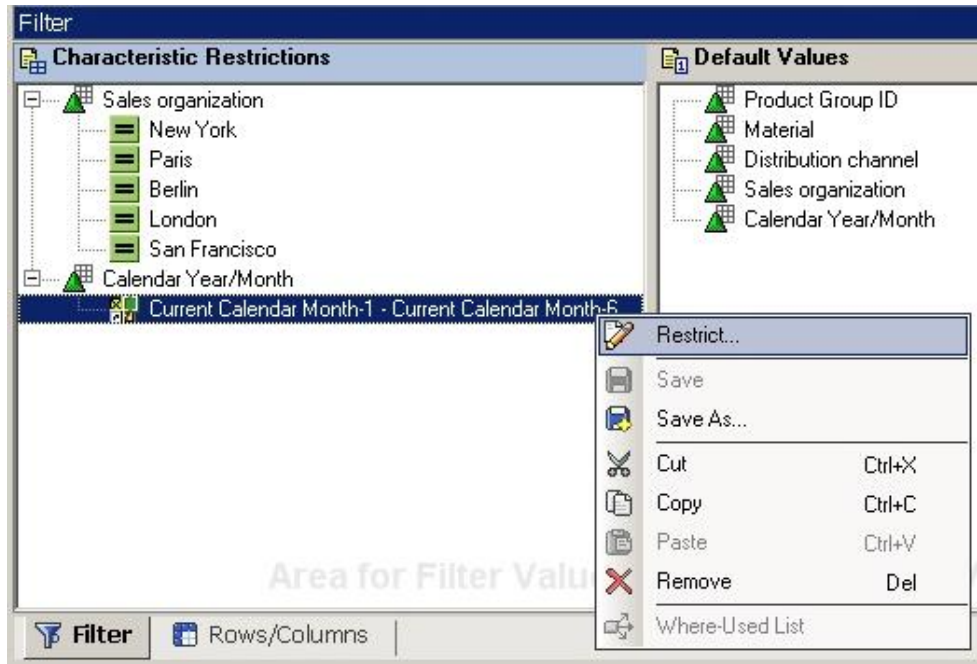
0D_FC_NW_C01_Q0004

Author PERENZONI Status of Data 04.07.2008 13:34:52

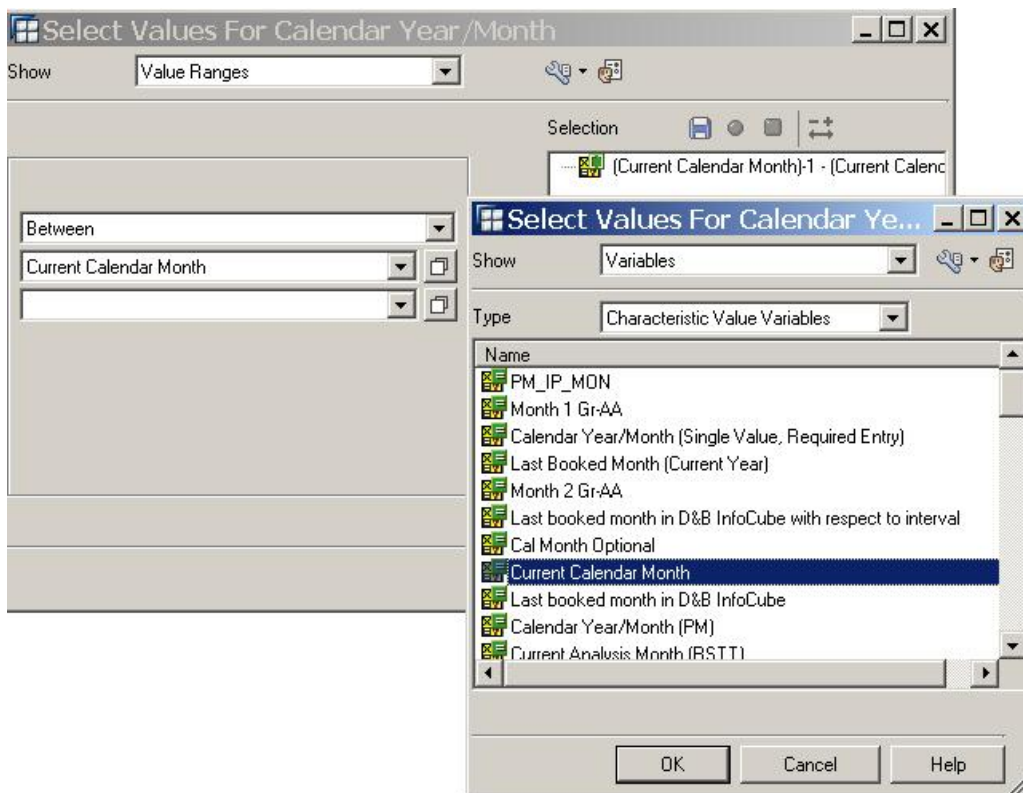
Chart Filter Information

Table		Net Value in statistics currency (SAP NW Demo),...					
Calendar Year/Month	Sales Organization	Berlin	London	Paris	New York	San Francisco	Overall Result
05.2008		8.675.235,00 EUR	2.236.169,00 EUR	9.097.563,00 EUR	7.508.881,00 EUR	6.429.770,00 EUR	33.947.618,00 EUR
06.2008		8.504.336,00 EUR	3.338.136,00 EUR	6.544.685,00 EUR	7.912.974,00 EUR	6.256.235,00 EUR	32.556.368,00 EUR
07.2008		7.723.941,00 EUR	3.545.801,00 EUR	5.128.957,00 EUR	9.282.187,00 EUR	9.763.086,00 EUR	35.443.972,00 EUR
08.2008		8.558.663,00 EUR	2.415.740,00 EUR	8.525.392,00 EUR	11.183.559,00 EUR	7.858.689,00 EUR	38.542.043,00 EUR
09.2008		3.769.625,00 EUR	6.149.069,00 EUR	9.739.315,00 EUR	7.496.471,00 EUR	5.823.867,00 EUR	32.976.347,00 EUR
10.2008		8.669.694,00 EUR	2.411.280,00 EUR	6.112.851,00 EUR	8.868.876,00 EUR	7.119.449,00 EUR	33.182.150,00 EUR
Overall Result		45.901.496,00 EUR	20.096.195,00 EUR	45.148.763,00 EUR	52.252.948,00 EUR	43.251.096,00 EUR	206.650.498,00 EUR

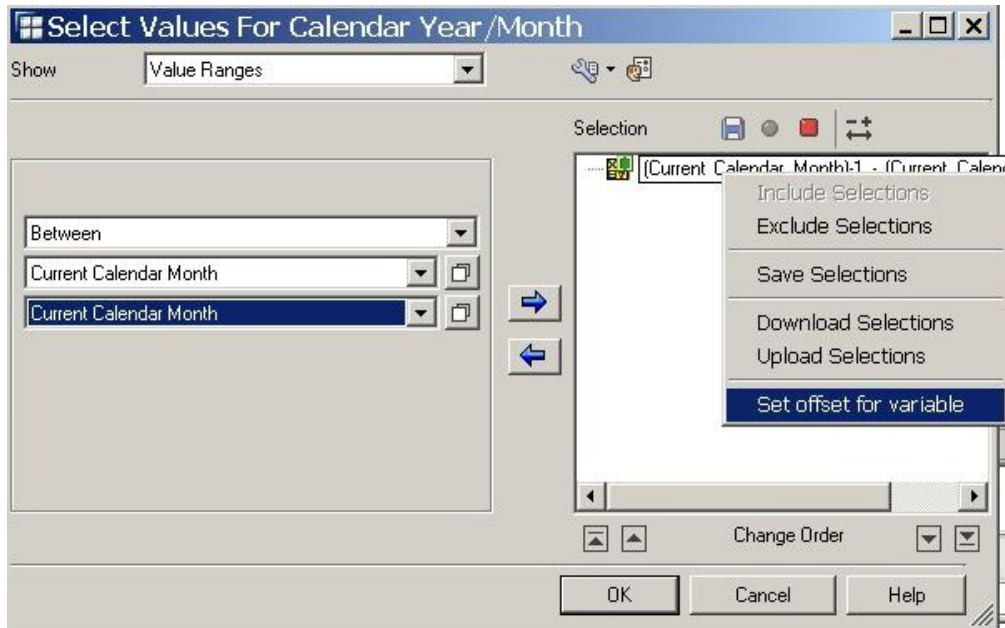
Appendix: Working with Variables and Offset for the Value Range for Calendar Year/Month



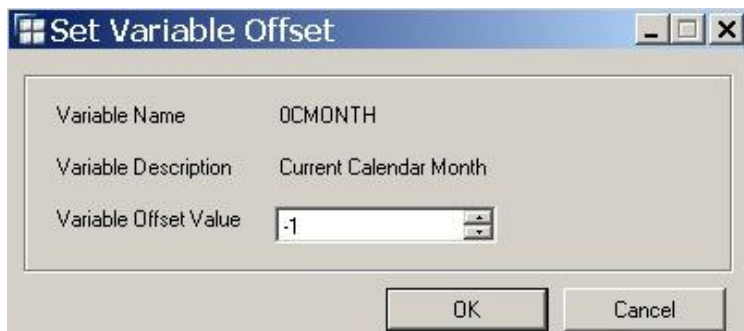
1. Choose the Filter tab and add a Characteristic Restriction for Calendar Year/Month.
2. Choose restrict.



3. Choose Value Range between Current Calendar Month and Current Calendar Month.



4. Choose Set offset for variable in the Selection.



5. Choose a Variable Offset Value of -6 for the lower boundary and -1 for the upper boundary.

Related Content

SAP NetWeaver - Demo Model (<https://www.sdn.sap.com/irj/sdn/nw-demomodel>)

SAP NetWeaver - Business Warehouse (<https://www.sdn.sap.com/irj/sdn/nw-bi>)

SAP BusinessObjects Community (<https://www.sdn.sap.com/irj/boc>)

For more information, visit the [Business Intelligence homepage](#).

Disclaimer and Liability Notice

This document may discuss sample coding or other information that does not include SAP official interfaces and therefore is not supported by SAP. Changes made based on this information are not supported and can be overwritten during an upgrade.

SAP will not be held liable for any damages caused by using or misusing the information, code or methods suggested in this document, and anyone using these methods does so at his/her own risk.

SAP offers no guarantees and assumes no responsibility or liability of any type with respect to the content of this technical article or code sample, including any liability resulting from incompatibility between the content within this document and the materials and services offered by SAP. You agree that you will not hold, or seek to hold, SAP responsible or liable with respect to the content of this document.