

BusinessObjects Enterprise XI R2

ODBC Connection to MySQL Database on Linux/UNIX

Overview

This document describes the steps to follow in order to configure the ODBC connection in Linux/UNIX.

Contents

INTRODUCTION	2
INSTALLING THE MYSQL CONNECTOR/ODBC DRIVERS	2
<i>Download and install the binaries drivers.....</i>	<i>2</i>
<i>Configuring the ODBC connector for Business Objects Auditor</i>	<i>3</i>
FINDING MORE INFORMATION	8

Introduction

In Linux/UNIX environments, the default installation of BusinessObjects Enterprise XI comes with the MySQL databases for the Central Management Server (CMS). Enterprise XI connects to the MySQL CMS database using the native connection. However, in order to use Auditor or report from the MySQL, an ODBC connection is needed.

Installing the MySQL connector/ODBC drivers

The Connector/ODBC drivers can be installed using two different methods:

- **Binary installation** -- This is the easiest and most straightforward method of installation. Binary installation packages can be downloaded for the appropriate operating system.
- **Source installation** - This method is only necessary on platforms where a binary installation package is not available or in situations where it is necessary to customize or modify the installation process or Connector/ODBC drivers before installation.

Download and install the binaries drivers

Downloading the binaries

The installations binaries are located on the following page:
<http://dev.mysql.com/downloads/connector/odbc>

Installing the binaries

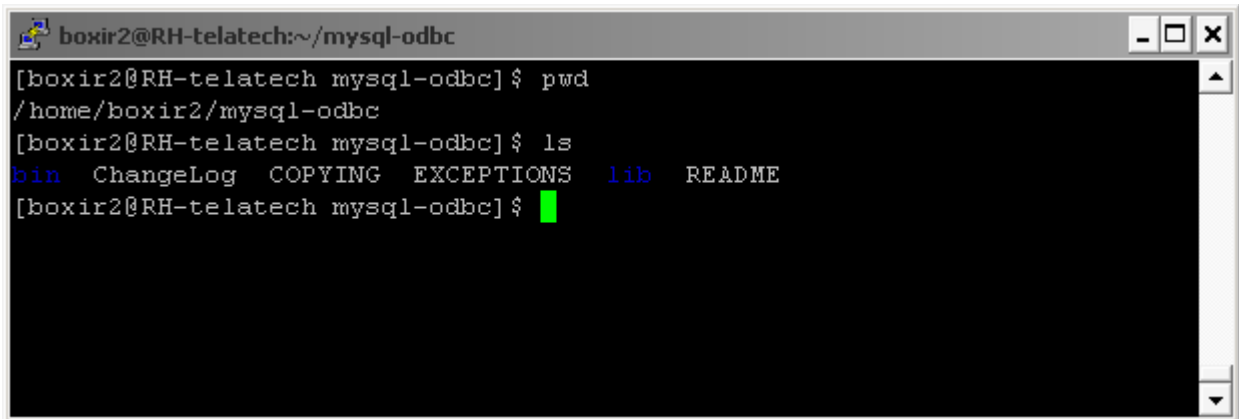
Once the tarball distribution (tar.gz) is downloaded, this can be installed as follows:

1. Type at the command-line prompt the following: **gunzip mysql-connect-odbc-XXXX.tar.gz.**
2. Type the following command: **tar -xvf mysql-connector-odbc-XXXX.tar.**

This uncompresses the tarball distribution in to the mysql-connector-odbc-XXXX folder.

In the screenshot below the folder is renamed to mysql-odbc

Figure 1 – mysql-odbc folder

A terminal window titled 'boxir2@RH-telatech:~/mysql-odbc' showing the execution of 'pwd' and 'ls' commands. The 'pwd' command returns '/home/boxir2/mysql-odbc'. The 'ls' command lists the contents of the directory: 'bin', 'ChangeLog', 'COPYING', 'EXCEPTIONS', 'lib', and 'README'.

```
boxir2@RH-telatech:~/mysql-odbc
[boxir2@RH-telatech mysql-odbc] $ pwd
/home/boxir2/mysql-odbc
[boxir2@RH-telatech mysql-odbc] $ ls
bin  ChangeLog  COPYING  EXCEPTIONS  lib  README
[boxir2@RH-telatech mysql-odbc] $
```

Configuring the ODBC connector for BusinessObjects Auditor

Configuring the odbc.ini file

Please note that auditor should be activated using the command **cmssetup.sh**. (Please refer to the installation guide for Linux/UNIX if necessary.)

To configure the file

1. Edit the odbc.ini located in the <Business Objects installation folder>/bobje/.
2. Add a data source entry for auditor. For example: boe115_audit.
3. Add the following connections parameters:

```
[boe115_audit]
Driver=<installation folder for mysql
connector>/lib/libmyodbc3_r.so
Description=auditor
SERVER=<server where the MySQL database is located>
(localhost)
PORT=3306
USER=<username>
Password=<password>
Database=boe115_audit (database name)
OPTION=3
SOCKET=
Trace=off
```

Figure 2 – Configuring odbc.ini

```

boxir2@RH-telatech:~/xir2/bobje
[ODBC Data Sources]
CRSQLServerWP=DataDirect 5.1 SQLServer Wire Protocol Driver
CRSybaseWP=DataDirect 5.1 Sybase Wire Protocol Driver
CRText=DataDirect 5.1 Text Driver
boe115_audit=auditor

[boe115_audit]
Driver=/home/boxir2/mysql-odbc/lib/libmyodbc3_r.so
Description=auditor
SERVER=RH-telatech
PORT=3306
USER=xir2
Password=xir2
Database=boe115_audit
OPTION=3
SOCKET=
Trace=off

```

Configuring the environment variable and testing the connection

To configure the environment variable and test the connection

1. Type “export ODBCINI=/<Business Objects installation folder>/bobje/odbc.ini”.
2. Test the connection using `isql -v boe115_audit`.

Figure 3 – Configuring the environment variable

```

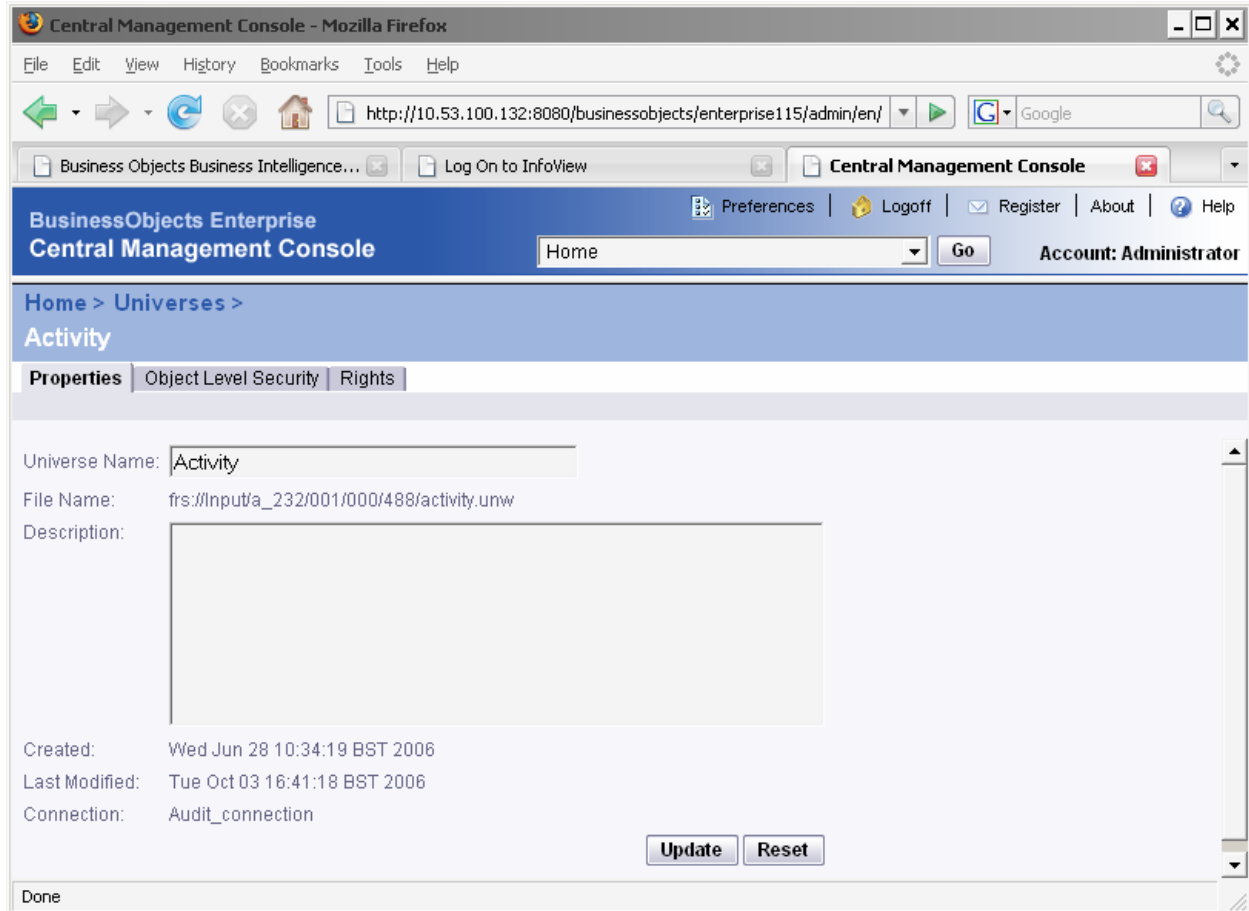
boxir2@RH-telatech:~/mysql-odbc/bin
* http://www.unixodbc.org *
* pharvey@codebydesign.com *
* nick@easysoft.com *
*****
[boxir2@RH-telatech bin]$ isql -v boe115_audit
[IM002][unixODBC][Driver Manager]Data source name not found, and no default driver specified
[ISQL]ERROR: Could not SQLConnect
[boxir2@RH-telatech bin]$ export ODBCINI=/home/boxir2/xir2/bobje/odbc.ini
[boxir2@RH-telatech bin]$ isql -v boe115_audit
+-----+
| Connected! |
|          |
| sql-statement |
| help [tablename] |
| quit |
+-----+
SQL>

```

Reporting using the ODBC connection (refresh auditor reports)

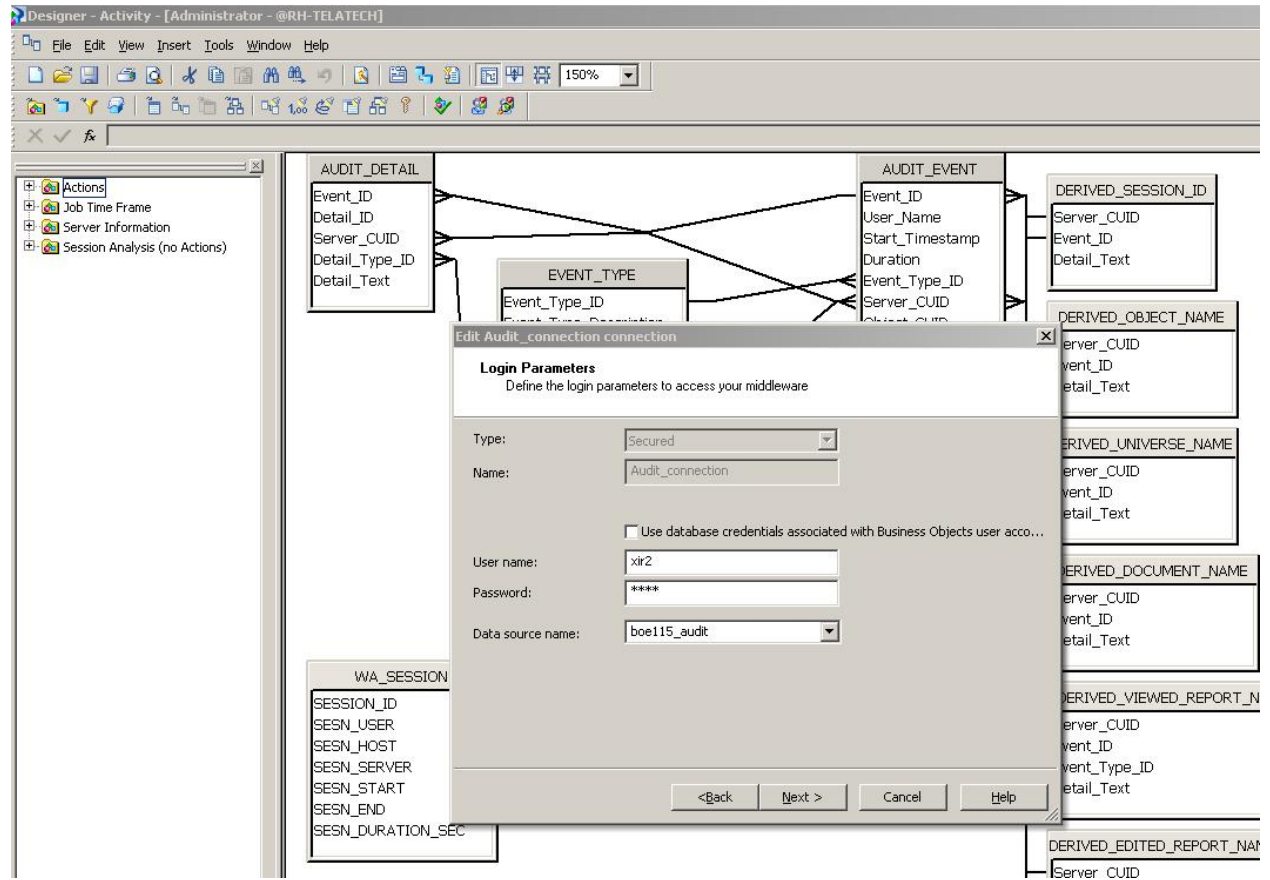
When installing auditor, the activity universe should be located on the CMS database.

Figure 4 –Audit connection on the Central Management Console



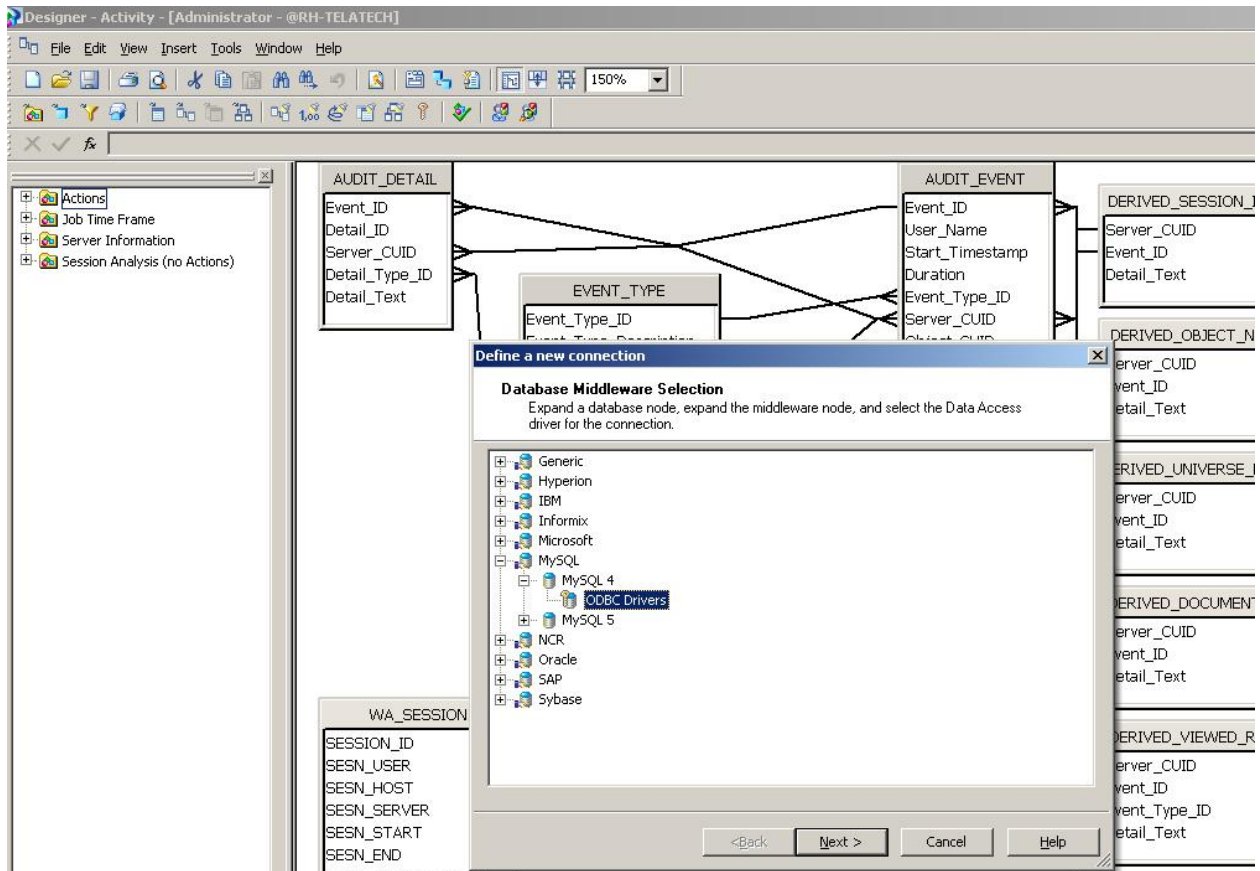
Ensure that the universe connection uses the correct data source name (boe115_audit) and that the user name and password are correct.


Figure 5 – Defining the Login Parameters



Also verify that the driver version for the universe connection is correct.

Figure 6 – Defining the driver version



NOTE	<p>To highlight text in a PDF document for copying and pasting code, click the Text Select Tool toolbar button in Adobe Acrobat.</p> <div style="text-align: center; margin: 5px 0;">  </div> <p>This procedure applies to Adobe Acrobat 4.0 and 5.0.</p>
-------------	---

Finding more information

For more information and resources, refer to the product documentation and visit the support area of the web site at:

<http://www.businessobjects.com/>

► www.businessobjects.com

No part of the computer software or this document may be reproduced or transmitted in any form or by any means, electronic or mechanical, including photocopying, recording, or by any information storage and retrieval system, without permission in writing from Business Objects.

The information in this document is subject to change without notice. Business Objects does not warrant that this document is error free.

This software and documentation is commercial computer software under Federal Acquisition regulations, and is provided only under the Restricted Rights of the Federal Acquisition Regulations applicable to commercial computer software provided at private expense. The use, duplication, or disclosure by the U.S. Government is subject to restrictions set forth in subdivision (c) (1) (ii) of the Rights in Technical Data and Computer Software clause at 252.227-7013.

The Business Objects product and technology are protected by US patent numbers 5,555,403; 6,247,008; 6,578,027; 6,490,593; and 6,289,352. The Business Objects logo, the Business Objects tagline, BusinessObjects, BusinessObjects Broadcast Agent, BusinessQuery, Crystal Analysis, Crystal Analysis Holos, Crystal Applications, Crystal Enterprise, Crystal Info, Crystal Reports, Rapid Mart, and WebIntelligence are trademarks or registered trademarks of Business Objects SA in the United States and/or other countries. Various product and service names referenced herein may be trademarks of Business Objects SA. All other company, product, or brand names mentioned herein, may be the trademarks of their respective owners. Specifications subject to change without notice. Not responsible for errors or omissions.

Copyright © 2007 Business Objects SA. All rights reserved.