

# Federated Portal for Composite Environment 7.1



## Applies to:

This article applies to Federated Portal for Composition Environment. For more information, visit the [Portal and Collaboration homepage](#)

## Summary

This article describes in detail about Federated Portal configuration for Composition Environment 7.1 EHP 1 which allows us to access the CE roles in the Enterprise Portal

**Author:** Srikanth Dodda

**Company:** Intelligroup Asia Pvt.

**Created on:** November 9, 2009

## Author Bio



Srikanth Dodda is working as Senior Consultant in Intelligroup Asia Pvt Ltd, Hyderabad and has 5years of experience. He has worked on eSOA, EP, KM and Collaboration, WebDynpro Programming and Java Technologies.

## Table of Contents

Introduction:.....	3
Purpose: .....	3
Prerequisite:.....	3
Check List for Configuring Federated Portal: .....	3
Procedure: .....	3
Setting FPN for Portals.....	3
On the Consumer Portal .....	3
On the Producer Portal .....	6
Configuring the OptimizerC Service.....	7
Setting up SSO for Portals .....	7
Creating Producer connection from the Consumer Portal .....	8
Remote Role Assignment (RRA) in Producer System.....	10
Testing Federated Portal on Consumer Portal .....	11
Related Content.....	12
Disclaimer and Liability Notice.....	13

## Introduction:

In Enterprise Portal 7.0 we had Knowledge Management Repository to retrieve and store the structured and unstructured data. But in Composite Environment, if we need this functionality of Knowledge Management we need to configure Federated Portal, as this functionality is not available in CE 7.1

## Purpose:

Enables us to access the CE roles from Enterprise Portal.

## Prerequisite:

We need to have 2 Portal accesses

- 1) A Portal running on SAP NetWeaver Composition Environment 7.0 which acts as Producer
- 2) A Portal running on SAP NetWeaver 7.0 service pack 14 or higher which acts as Consumer.
- 3) For Both the Portal User's you need to have administrator privileges i.e. for creating users & configuring SSO (Single-Sign-On).

**Producer:** A portal installation that provides other portals (consumers) with remote access to its locally deployed content.

**Consumer:** A portal installation that accesses the remote content provided by another portal (producer).

## Check List for Configuring Federated Portal:

- 1) Setting up FPN for both the Portals i.e. for CE 7.1 (Producer Portal) and NetWeaver Portal 7.0 (Consumer Portal).
- 2) Configure OptimizerC Service on Consumer Portal.
- 3) Setting up SSO for both Producer & Consumer Portals.
- 4) Creating Producer connection from the Consumer Portal.
- 5) Perform Remote Role Assignment (RRA).
- 6) Test Case to access the CE Roles in the Portal

**Optimizer:** By configuring the optimizer we can reduce the number of runtime round-trips between consumer and producer on the consumer portal; thereby improving overall performance

**Note:** Only when the entire above check list is done then we can say that Federated Portal is configured successfully.

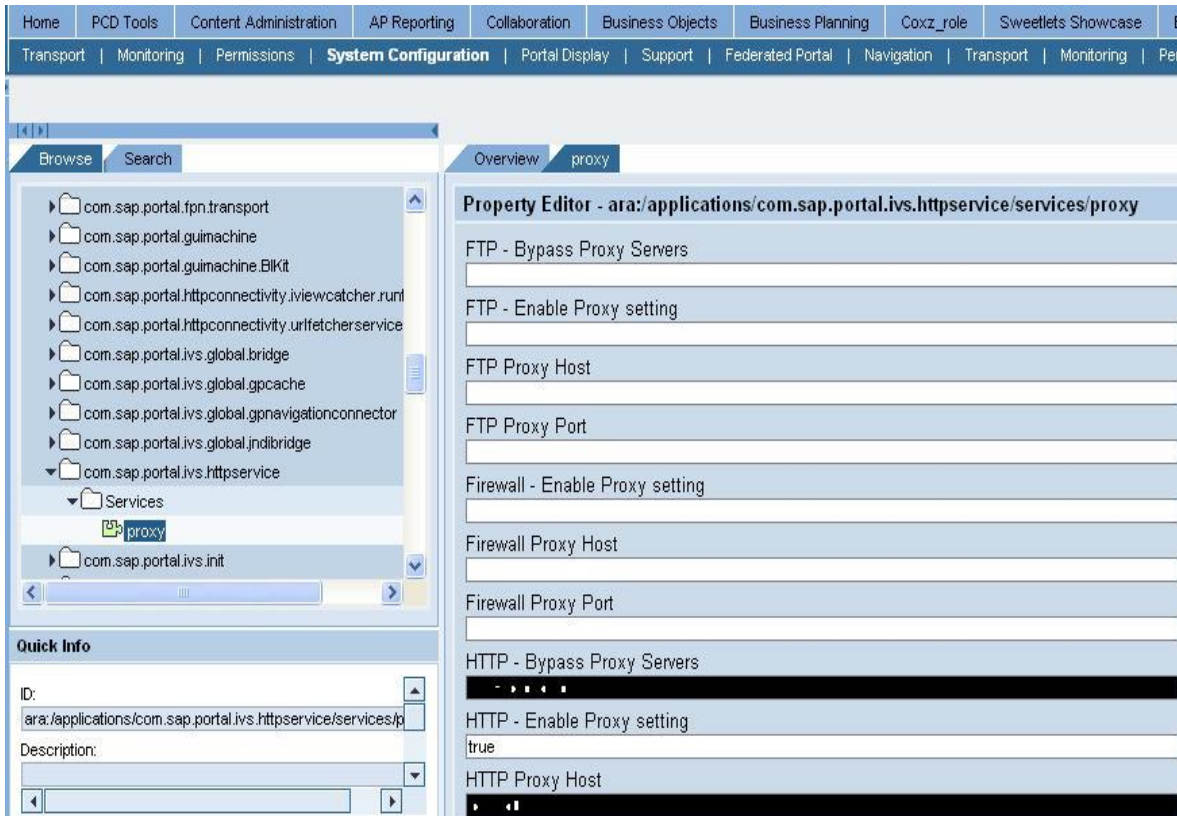
## Procedure:

### Setting FPN for Portals

#### On the Consumer Portal

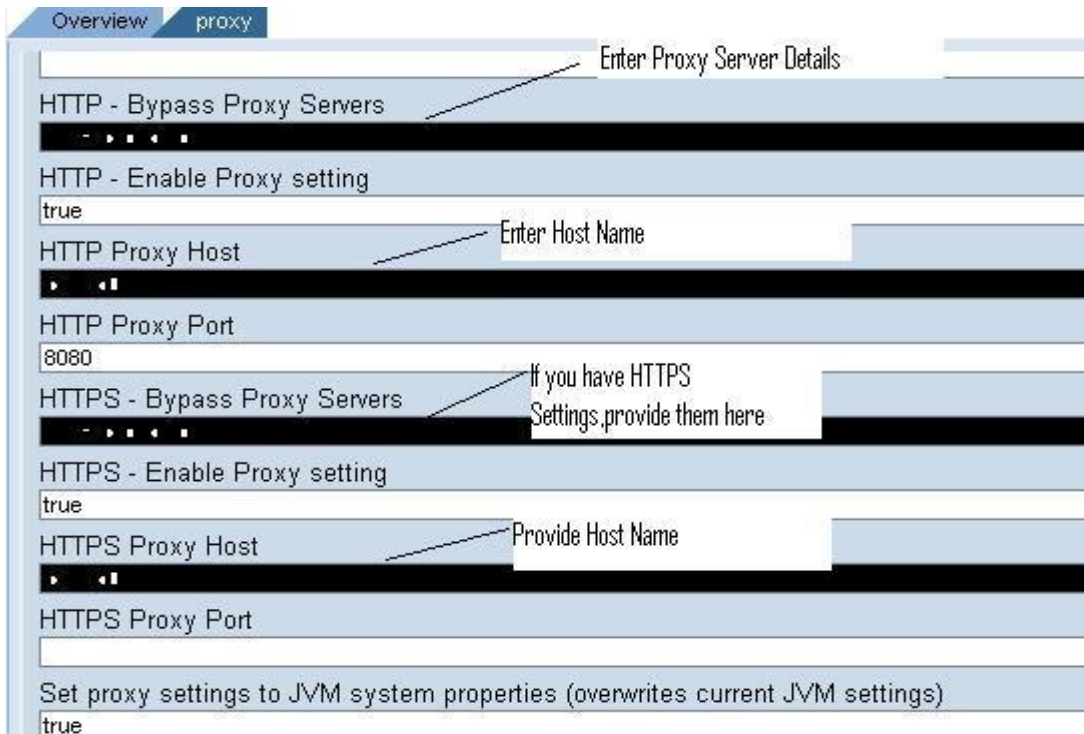
- 1) Log into Consumer Portal with Administrative rights.
- 2) Go to System Administration -> System Configuration -> Service Configuration
- 3) Browse to Application -> com.sap.portal.ivs.httpservice -> Services -> Proxy

**Screen 1**



4) Enter the HTTP Proxy Properties for below corresponding fields.

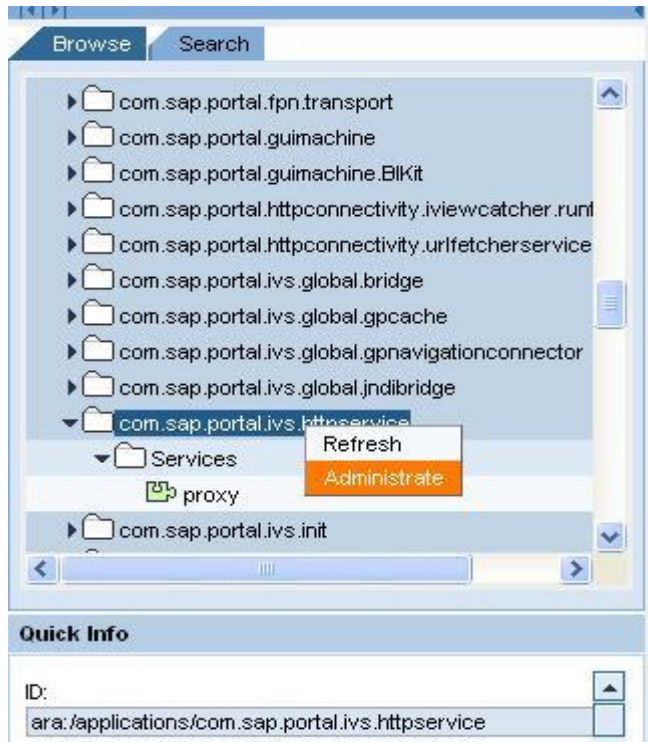
**Screen 2**



Save the settings.

- 5) Now click the parent folder i.e. **com.sap.portal.ivs.httpservice** and right click to choose **Administrate**

### Screen 3



- 6) Click on **Restart** the Service, this will start the service, this is done to update the values which we have entered in step 4.

### Screen 4



**On the Producer Portal**

- 1) Log into SAP Net weaver Portal with Administrator rights by replacing /irj/portal in the portal URL with /nwa.
- 2) Go to **Configuration Management -> Infrastructure -> Application Modules.**
- 3) Search for **com.sap.portal.ivs.httpservice.**

**Screen 5**

Module List		
Refresh		
Name	Type	Application
com.sap.portal.ivs.httpservice		
com.sap.portal.ivs.httpservice	Web Module	sap.com/com.sap.portal.ivs.httpservice

- 4) In the Web Module Details frame, select **Proxy**
- 5) In the Full Details frame enter the appropriate values

**Screen 6**

**Web Module Details**

Save

Components | Component Mapping | Context | Cookies | Web Dynpro Properties | Environment | JSP Property Groups | Welcome Pages

Hide Default Components

Name	Type	Defined In
http	Portal Service	Web Module
proxy	Portal Service	Web Module
jsp	Servlet	Global XML Descriptor
invoker	Servlet	Global XML Descriptor
default	Servlet	Global XML Descriptor

**Full Details**

Properties

Restore Default Values

Name	Value
Set proxy settings to JVM system properties (overwrites current JVM settings)	true
HTTP Proxy Host	
HTTP Proxy Port	8080
HTTP - Enable Proxy setting	true
HTTP - Bypass Proxy Servers	

- 6) Save the settings.
- 7) Go to **Operation Management -> Systems -> Start & Stop -> Java EE Applications** and **search** for the service **com.sap.portal.ivs.httpservice.**
- 8) Select Stop and then Start.

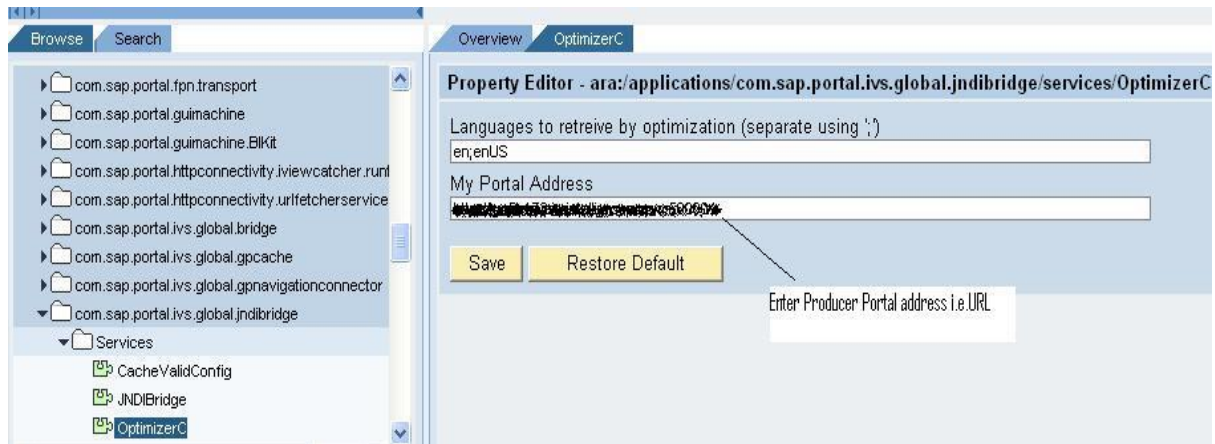
**Screen 7**

Java EE Applications			
Application List			
Start Stop Refresh Retrieve Status On			
Name	Vendor	Status	Functionality
com.sap.portal.ivs.httpservice			
com.sap.portal.ivs.httpservice	sap.com	Started	Portal

## Configuring the OptimizerC Service

- 1) Log onto Consumer Portal
- 2) Go to **System Administration -> System Configuration -> Service Configuration.**
- 3) Browse to **Application -> com.sap.portal.ivs.global.jndibridge -> Services -> OptimizerC.**
- 4) In the My Portal Address field, enter the portal address including the domain

### Screen 8



- 5) Save the settings.
- 6) Right click on the parent folder, and choose **Administrate -> Restart the service.**

## Setting up SSO for Portals

1. On the consumer portal, navigate to **System Administration -> System Configuration -> Keystore Administration.**
2. Download the **verify.der** file
3. Save the file locally to your system.
4. Import the verify.der file into Producer System by the below procedure
5. On the producer portal, log in as administrator to the SSO2 tool on the producer portal (e.g., <http://hostname:portno/ss02>).
6. Select **Add trusted system -> By upload certificate manually.**
7. Enter the SID login of the portal in the system\_id field To find the SID login of the portal, remove *irj/portal* from the portal URL and open a new browser instance (e.g., <http://goofy.corp:50000>), and then select System Information).
8. Fill in the client field (e.g., *000*).
9. Upload the consumer's certificate i.e. verify.der and then confirm your setting by clicking on Next and Finish.
10. Certificated is added in the producer portal as show in the below screen 9

## Screen 9

**Selected Accepting System**

Show SSO Certificate    Show SSO Configuration

System ID    CE7  
 Client        000  
 SSO Certificate     Valid

**Trusted Systems**

Add Trusted System    Remove Trusted System    Update Certificate

System ID	Client	Subject DN	Issuer DN	Certificate
BI7	000	CN=BI7,OU=J2EE	CN=BI7,OU=J2EE	<input checked="" type="checkbox"/> OK

11. To complete two-way trust, repeat the above steps by switching the two portals (i.e., download certificate from the producer and upload to the consumer).

## Creating Producer connection from the Consumer Portal

- 1) Log in Consumer Portal with Administrator rights.
- 2) Go to **System Administration -> Federated Portal -> Myself as Content Consumer -> Manage My producers**

## Screen 10

Home    Content Administration    User Administration    **System Administration**

Transport    Monitoring    Permissions    System Configuration    Portal Display    Support    **Federated Portal**    Navigation

**Manage My Producers**

Detailed Navigation

- Myself as Content Consumer
  - View My Producers
  - Manage My Producers**
  - Configure My Consumer Profile
- Myself as Content Producer
  - View My Consumers

Find:     Go

Advanced Find    Find & Replace

- NetWeaver Content Producers
  - New
    - SAP Producer
    - Folder
  - Open
  - Refresh
- WSRP Content Producers

- 3) In the wizard, enter a producer name and ID, and then choose **next**.

## Screen 11



Overview | **New SAP Producer**

### Producer Wizard

**Step 1: General Properties**

Producer Name: \*

Producer ID: \*

Producer ID Prefix (Example: com.companyname):

Master Language: \*

Description:

Cancel Back **Next >** Finish

- 4) In the protocol option, select **HTTP**.
- 5) Enter the host name.
- 6) Enter Port.
- 7) Choose Next -> Finish.

### Screen 12

Overview | **New SAP Producer** x

### Producer Wizard

**Step 2: Define Producer URL**

Enter the connection parameters of the NetWeaver producer portal. The portal automatically combines the WSDL definition file or service to create a full URL to the producer portal.

Do not change the default path to the WSDL definition file unless you are instructed to do so.

REG\_TITLE:

Protocol: \*

Host Name: \*

Port:

Path to WSDL Definition File:

Edit Reset Default

REG\_P4TITLE:  
 URL\_P4CONNECTION:

URL\_P4SECURITY:

URL\_P4HOST NAME:

- 8) In the Portal Catalog, open producer object (njsapnet1) we have created.
- 9) In the display drop down properties, select **Producer Registration**

## Screen 13

Overview njsapnet1

Save Close Preview Refresh Edit Mode Display: **Producer Registration** ▼

### Producer Registration

To use content shared by a content producer, you must register your portal as a consumer with the producer. Formal WSRP-based registration is performed only if the producer requires it. Even if a producer does not require WSI still register your portal using the 'Register' option in this screen.  
 Tip: Before registering, check connectivity to the producer in the 'Connection Tests' screen.

**i** Status: You are registered on the producer

Register Unregister

HTTP / HTTPS Communication:

Your Consumer Name: [Redacted]

host: [Redacted]

port: 50300

P4 Communication:

Consumer P4 Connection: Direct to Server ▼

Consumer P4 Security: ▼

Consumer Host Name: [Redacted]

Consumer Port: 50200

- 10) Enter the Consumer Details as shown in above screen 13.
- 11) Save the settings.
- 12) Click on Register.
- 13) After all the registration process, we can see the status above the object created.

## Remote Role Assignment (RRA) in Producer System

1. Navigate to **User Administration -> Identity Management**.
2. In the Search Criteria option, select Role, and then click **Create Role**.
3. Create a new role (e.g., **remote\_access\_role**) and then save your settings.
4. Select the **Assigned Actions** tab and then search for the following two actions:
  - Remote\_producer\_Read\_Access**
  - Remote\_producer\_Write\_Access**
5. Assign the two UME actions to your role and save.
6. Select the Assigned Users tab and then search for the **pcd\_service user**.
7. Assign your role to the pcd\_service user.
8. Save your settings.

## Testing Federated Portal on Consumer Portal

Logon to the Consumer System

Goto **User Administration** → **Identity Management** → In the **data source** dropdown selects **Producer System**

Search the roles available in the producer system as show in the below screen14.

### Screen 14

**Search**

**Search Criteria**
Role
njsapnet1
\*
Go

Select All Deselect All Create Role Delete Export

	Type	Name	Description	Data Source
📄		pcd:portal_content/administrator/content_admin/...	Content Admin	njsapnet1
📄		pcd:portal_content/administrator/modeled_conte...	VC Dev Preview	njsapnet1
📄		pcd:portal_content/administrator/super_admin/su...	Super Administration	njsapnet1
📄		pcd:portal_content/administrator/support_role/su...	SAP_JAVA_SUPPORT	njsapnet1
📄		pcd:portal_content/administrator/system_admin/s...	System Admin	njsapnet1

⏪ ⏩ ⏴ ⏵ Row 1 of 24 ⏴ ⏵

## Related Content

[http://help.sap.com/SAPHELP\\_NW04S/helpdata/EN/67/7e70424edcc553e1000000a1550b0/frameset.htm](http://help.sap.com/SAPHELP_NW04S/helpdata/EN/67/7e70424edcc553e1000000a1550b0/frameset.htm)

<http://www.sdn.sap.com/irj/scn/index?rid=/library/uuid/50786c8a-8138-2c10-f883-e157347a95a6>

For more information, visit the [Portal and Collaboration homepage](#)

## Disclaimer and Liability Notice

This document may discuss sample coding or other information that does not include SAP official interfaces and therefore is not supported by SAP. Changes made based on this information are not supported and can be overwritten during an upgrade.

SAP will not be held liable for any damages caused by using or misusing the information, code or methods suggested in this document, and anyone using these methods does so at his/her own risk.

SAP offers no guarantees and assumes no responsibility or liability of any type with respect to the content of this technical article or code sample, including any liability resulting from incompatibility between the content within this document and the materials and services offered by SAP. You agree that you will not hold, or seek to hold, SAP responsible or liable with respect to the content of this document.