

BI4 Maintenance Demystified

Brief Explanation of BI4 Maintenance Delivery Processes
October, 2012



Introduction

Purpose of this document:

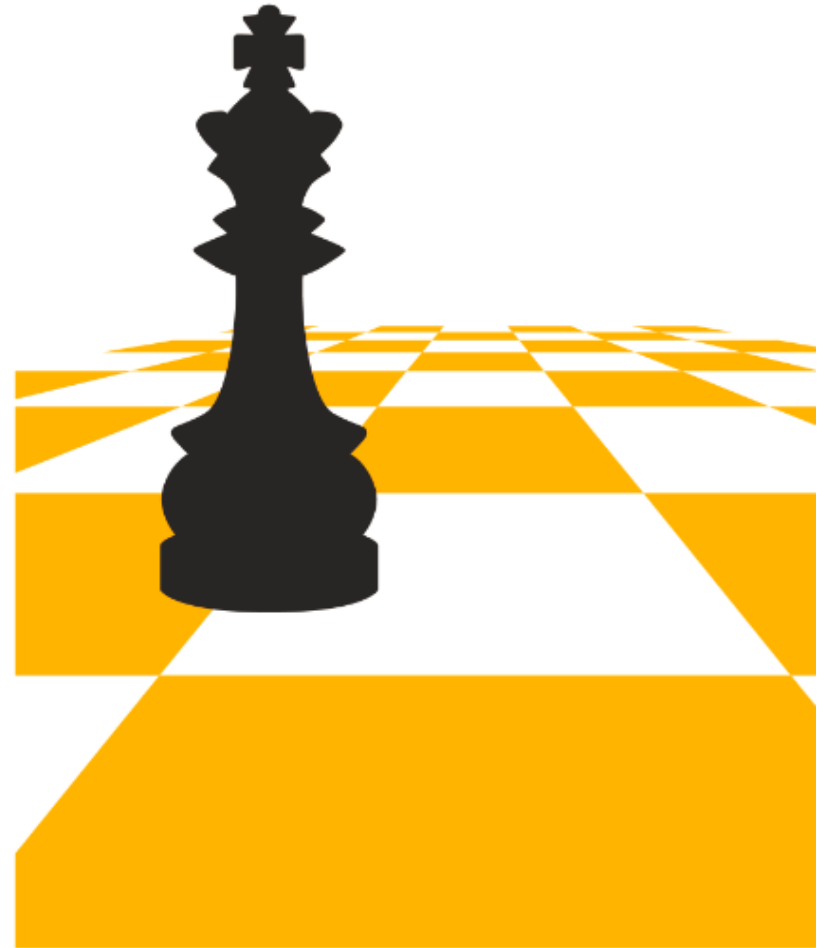
- Short deliverable to accompany my SAP Community Network [Blog](#).
- Introduce basic concepts of BI4 Maintenance Delivery.
- Understand use and requesting of BI4 Critical Patches.



BI4 Maintenance Strategy Goals

Main strategy points for BI4 Maintenance:

- **Quality & Governance** – Alignment with SAP standards & best practices.
- **Aligned Terminology** – A ONE SAP approach with common & recognizable naming conventions.
- **Critical Corrections** – A critical correction delivery vehicle that enabled short correction cycle for mainstream release.



BI4 Maintenance Delivery Vehicles

Delivery Vehicle	Contents	Frequency	Lifetime	XI3 Comparison
Minor Release (MR)	Innovations Roll up of SP Complex Corrections New Language Packs	~12-24 months	2 years 1 year between MR	Service Pack
Support Pack (SP)	Small Innovations Roll up of CP Corrections New Platforms	~6-9 months	Refer to CP Lifetime	Fix Pack
Critical Patch (CP)	Urgent Corrections Only – Priority 1 or Show Stopper	~3 weeks	Patch available on SP & SP-1	Limited Availability Fix

BI4 Maintenance Delivery Clarifications

Clarifications for BI4 release delivery:

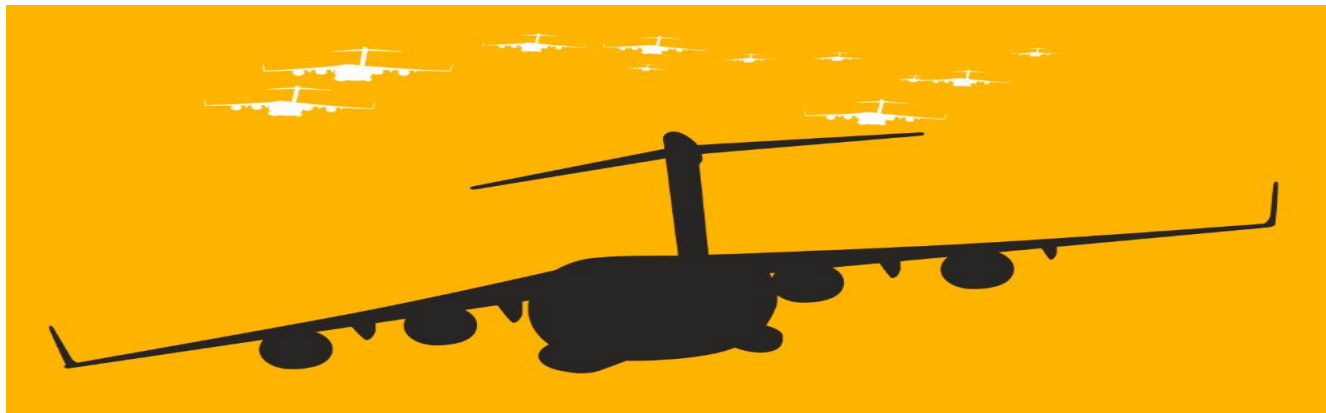
- **Frequency**– Frequency is estimated and subject to change. Always refer to KB [1479533](#) for links to Published release dates on the [SP-Stacks](#) page.
- **Lifetime**– In accordance with SAP Release & Maintenance Brochure with formal End Of Life dates noted in [Product Availability Matrix \(PAM\)](#).
- **Feature Packs**– To date Feature Pack 3 was a one time release and included in Support Pack 4. Please refer to KB [1721866](#) for details.
- **Cumulative Release Plan**- BI4 Maintenance releases are cumulative but ensure you review the Forward Fit scenarios found in KB [1479533](#).



Critical Patch for Urgent Corrections

Information on when a critical patch may be appropriate and how to request:

- **Priority 1 or Blocking Issues Only**– Only critical corrections are considered for inclusion and must meet minimum requirements of KB [1661557](#).
- **Business Case**– Must be included with all patch requests to validate business and operational impact of the requested correction.
- **Request via Support Message**– All requests must go through an open and valid support message for the issue.
- **Timeline**- Support Team will work with our Product Delivery Teams to assign a target for release.





Thank You!

Contact information:

Christopher M. Vozella
Director, AGS Primary Support

[mailto: Christopher.Vozella@sap.com](mailto:Christopher.Vozella@sap.com)

© 2012 SAP AG. All rights reserved.

No part of this publication may be reproduced or transmitted in any form or for any purpose without the express permission of SAP AG. The information contained herein may be changed without prior notice.

Some software products marketed by SAP AG and its distributors contain proprietary software components of other software vendors.

Microsoft, Windows, Excel, Outlook, and PowerPoint are registered trademarks of Microsoft Corporation.

IBM, DB2, DB2 Universal Database, System i, System i5, System p, System p5, System x, System z, System z10, System z9, z10, z9, iSeries, pSeries, xSeries, zSeries, eServer, z/VM, z/OS, i5/OS, S/390, OS/390, OS/400, AS/400, S/390 Parallel Enterprise Server, PowerVM, Power Architecture, POWER6+, POWER6, POWER5+, POWER5, POWER, OpenPower, PowerPC, BatchPipes, BladeCenter, System Storage, GPFS, HACMP, RETAIN, DB2 Connect, RACF, Redbooks, OS/2, Parallel Sysplex, MVS/ESA, AIX, Intelligent Miner, WebSphere, Netfinity, Tivoli and Informix are trademarks or registered trademarks of IBM Corporation.

Linux is the registered trademark of Linus Torvalds in the U.S. and other countries.

Adobe, the Adobe logo, Acrobat, PostScript, and Reader are either trademarks or registered trademarks of Adobe Systems Incorporated in the United States and/or other countries.

Oracle and Java are registered trademarks of Oracle and/or its affiliates.

UNIX, X/Open, OSF/1, and Motif are registered trademarks of the Open Group.

Citrix, ICA, Program Neighborhood, MetaFrame, WinFrame, VideoFrame, and MultiWin are trademarks or registered trademarks of Citrix Systems, Inc.

HTML, XML, XHTML and W3C are trademarks or registered trademarks of W3C®, World Wide Web Consortium, Massachusetts Institute of Technology.

SAP, R/3, SAP NetWeaver, Duet, PartnerEdge, ByDesign, SAP BusinessObjects Explorer, StreamWork, and other SAP products and services mentioned herein as well as their respective logos are trademarks or registered trademarks of SAP AG in Germany and other countries.

Business Objects and the Business Objects logo, BusinessObjects, Crystal Reports, Crystal Decisions, Web Intelligence, Xcelsius, and other Business Objects products and services mentioned herein as well as their respective logos are trademarks or registered trademarks of Business Objects Software Ltd. Business Objects is an SAP company.

Sybase and Adaptive Server, iAnywhere, Sybase 365, SQL Anywhere, and other Sybase products and services mentioned herein as well as their respective logos are trademarks or registered trademarks of Sybase, Inc. Sybase is an SAP company.

All other product and service names mentioned are the trademarks of their respective companies. Data contained in this document serves informational purposes only. National product specifications may vary.

The information in this document is proprietary to SAP. No part of this document may be reproduced, copied, or transmitted in any form or for any purpose without the express prior written permission of SAP AG.