

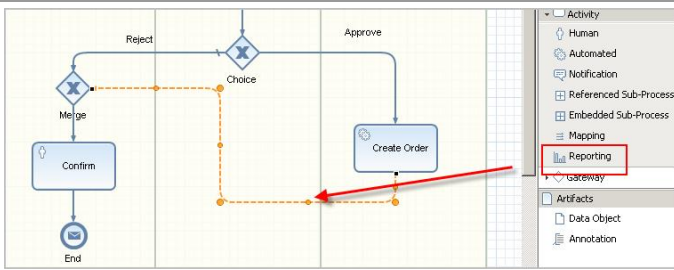
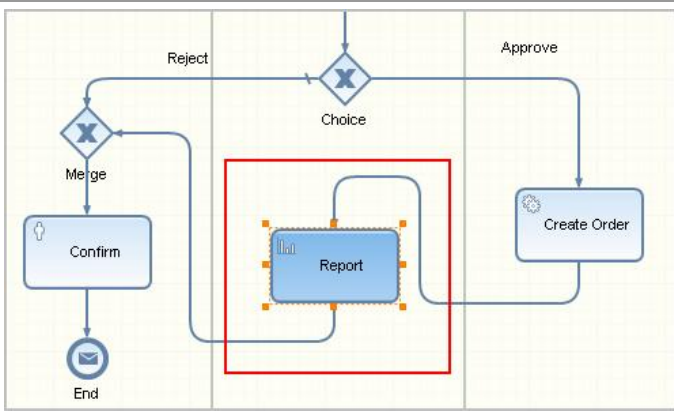
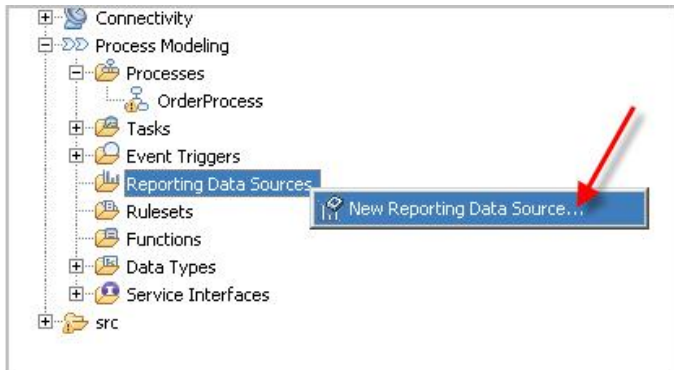
SAP NETWEAVER BPM REPORTING ACTIVITY INTEGRATION WITH SAP NETWEAVER VISUAL COMPOSER

Werner Steyn

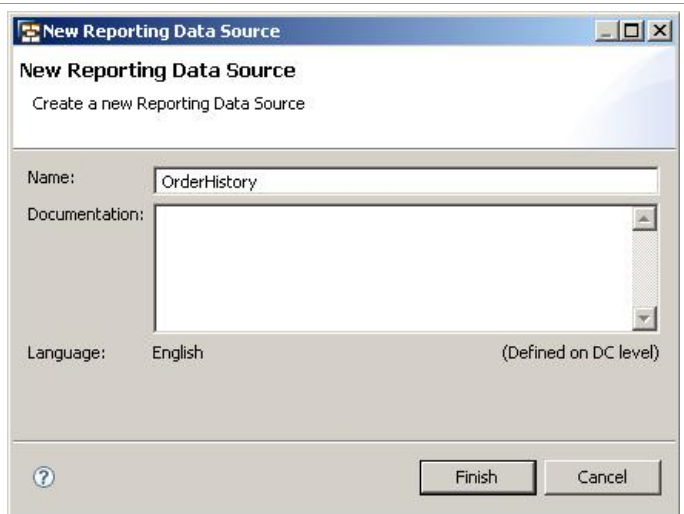
SAP Intelligence Platform and NetWeaver RIG

Exercise 1

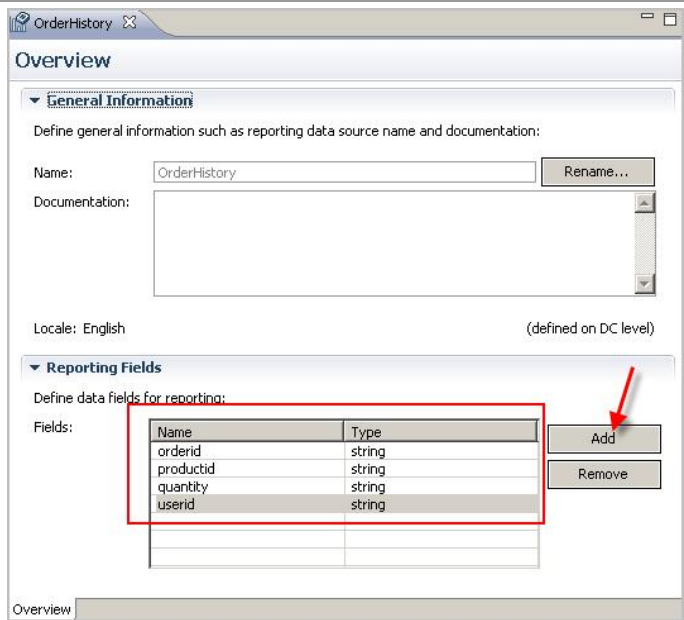
In this exercise you will learn how to create a custom BPM reporting data source and use Visual Composer to visualize the report.

<p>1. Locate the Reporting Activity and Drag that into your BPM diagram. In this example, the requirement is to store the order information into a custom table. Visual Composer will then be used to visualize the order history report.</p>	
<p>2. As a result your diagram should look as follows. You might have to connect the lines including renaming the Reporting activity.</p>	
<p>3. Expand the Process Modeling folder, right click on the Reporting Data Sources folder and Create a New Reporting Data Source.</p>	

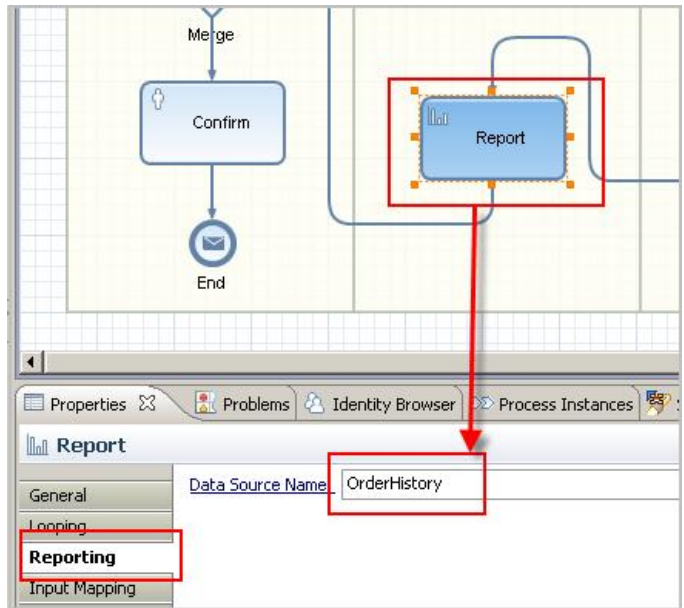
4. Enter a name for the Reporting Data Source and Click Finish.



5. Within the OrderHistory DataSource windows click the add button and add the necessary DataSource fields.

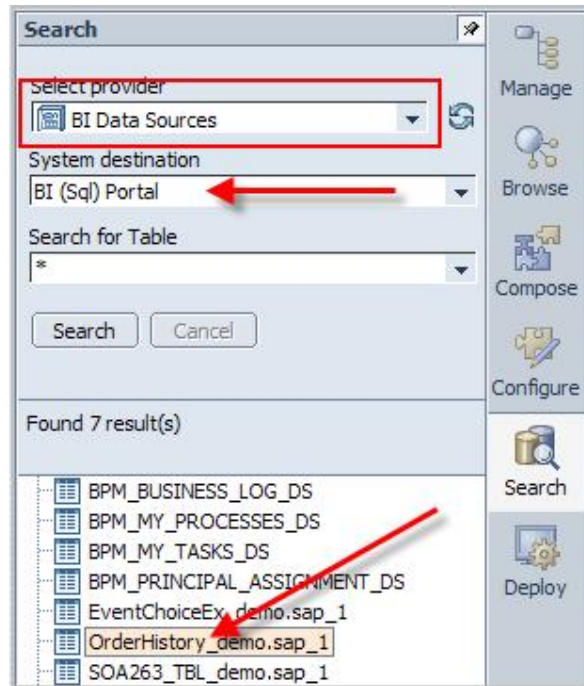


6. Assign the OrderHistory reporting DataSource to the Reporting Activity.

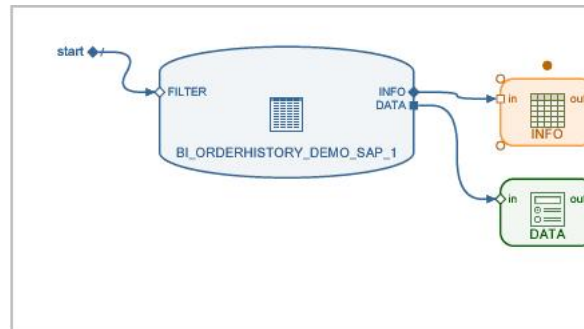


<p>7. Click on the Input Mapping tab and map the desired fields from the Process Context into the Inputs of the Report.</p>	
<p>8. Deploy and Run the process as normal.</p>	
<p>9. After the process has finished proceed to log into Visual Composer (web site)</p>	
<p>10. Create a new Visual Composer Model.</p>	

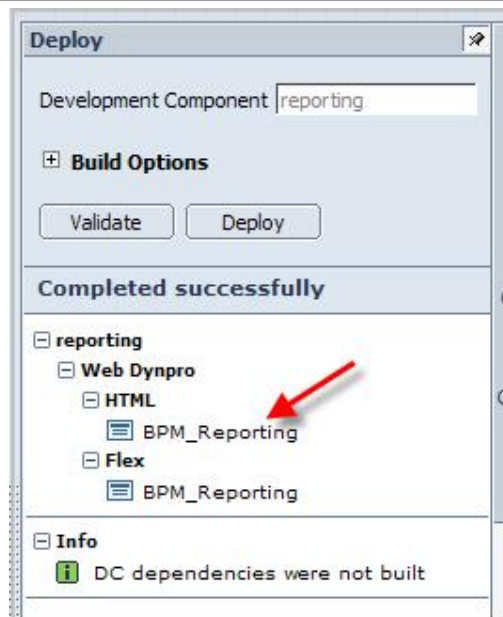
11. To find your Reporting Data Source; click on Search > Select BI Data Sources > BI (Sql) Portal and Click Search. Drag your table into the work surface area.



12. Assign a Start point and 2 Form views to the model. The info form view will be the header and the Data form view will provide more details.



13. Deploy and test your application.



14. Result.

Order History Resport

Technical Name	Description	Current User
OrderHistory_demo.ssp_1	OrderHistory_demo.ssp_1	Administrator

Process	Order	Date	Product	Quantity	Approved
F826F44DF9011DEC	1259789528468	12/2/09	S93933	200	1
01AE3AD4DF8A11DE	1259789512840	12/2/09	S939335	600	1
EC6CF394DF9011DE	1259792473840	12/2/09	9848444	222	1
7F66E210F9211DE98	1259793145906	12/2/09	U738333	300	1

Copyright

© 2010 SAP AG. All rights reserved.

No part of this publication may be reproduced or transmitted in any form or for any purpose without the express permission of SAP AG. The information contained herein may be changed without prior notice.

Some software products marketed by SAP AG and its distributors contain proprietary software components of other software vendors.

Microsoft, Windows, Outlook, and PowerPoint are registered trademarks of Microsoft Corporation.

IBM, DB2, DB2 Universal Database, OS/2, Parallel Sysplex, MVS/ESA, AIX, S/390, AS/400, OS/390, OS/400, iSeries, pSeries, xSeries, zSeries, System i, System i5, System p, System p5, System x, System z, System z9, z/OS, AFP, Intelligent Miner, WebSphere, Netfinity, Tivoli, Informix, i5/OS, POWER, POWER5, POWER5+, OpenPower and PowerPC are trademarks or registered trademarks of IBM Corporation.

Adobe, the Adobe logo, Acrobat, PostScript, and Reader are either trademarks or registered trademarks of Adobe Systems Incorporated in the United States and/or other countries.

Oracle is a registered trademark of Oracle Corporation.

UNIX, X/Open, OSF/1, and Motif are registered trademarks of the Open Group.

Citrix, ICA, Program Neighborhood, MetaFrame, WinFrame, VideoFrame, and MultiWin are trademarks or registered trademarks of Citrix Systems, Inc.

HTML, XML, XHTML and W3C are trademarks or registered trademarks of W3C®, World Wide Web Consortium, Massachusetts Institute of Technology.

Java is a registered trademark of Sun Microsystems, Inc.

JavaScript is a registered trademark of Sun Microsystems, Inc., used under license for technology invented and implemented by Netscape.

MaxDB is a trademark of MySQL AB, Sweden.

SAP, R/3, mySAP, mySAP.com, xApps, xApp, SAP NetWeaver, and other SAP products and services mentioned herein as well as their respective logos are trademarks or registered trademarks of SAP AG in Germany and in several other countries all over the world. All other product and service names mentioned are the trademarks of their respective companies. Data contained in this document serves informational purposes only. National product specifications may vary.

These materials are subject to change without notice. These materials are provided by SAP AG and its affiliated companies ("SAP Group") for informational purposes only, without representation or warranty of any kind, and SAP Group shall not be liable for errors or omissions with respect to the materials. The only warranties for SAP Group products and services are those that are set forth in the express warranty statements accompanying such products and services, if any. Nothing herein should be construed as constituting an additional warranty.

These materials are provided "as is" without a warranty of any kind, either express or implied, including but not limited to, the implied warranties of merchantability, fitness for a particular purpose, or non-infringement.

SAP shall not be liable for damages of any kind including without limitation direct, special, indirect, or consequential damages that may result from the use of these materials.

SAP does not warrant the accuracy or completeness of the information, text, graphics, links or other items contained within these materials. SAP has no control over the information that you may access through the use of hot links contained in these materials and does not endorse your use of third party web pages nor provide any warranty whatsoever relating to third party web pages.

Any software coding and/or code lines/strings ("Code") included in this documentation are only examples and are not intended to be used in a productive system environment. The Code is only intended better explain and visualize the syntax and phrasing rules of certain coding. SAP does not warrant the correctness and completeness of the Code given herein, and SAP shall not be liable for errors or damages caused by the usage of the Code, except if such damages were caused by SAP intentionally or grossly negligent.