

Author :
Prakash.N
SAP Consultant,
Bangalore – 64.

Email: prakasz@yahoo.com
mob : +91 9980802974

Mercury QTP Professional Integration with SAP eCATT

Author :
Prakash.N
SAP Consultant,
Bangalore – 64.

Email: prakasz@yahoo.com
mob : +91 9980802974

Mercury Testing Tool Configuration Guide

Activating Add-in Support for SAP Solutions

Before you can work with the QuickTest Professional Add-in for SAP Solutions, you must make sure that the Add-in for SAP Solutions is licensed, and then use the Add-in Manager to load QuickTest Professional with add-in support for SAP. You can load QuickTest without add-in support for SAP if you do not want to test SAP applications.

Loading QuickTest with Add-in Support for SAP Solutions

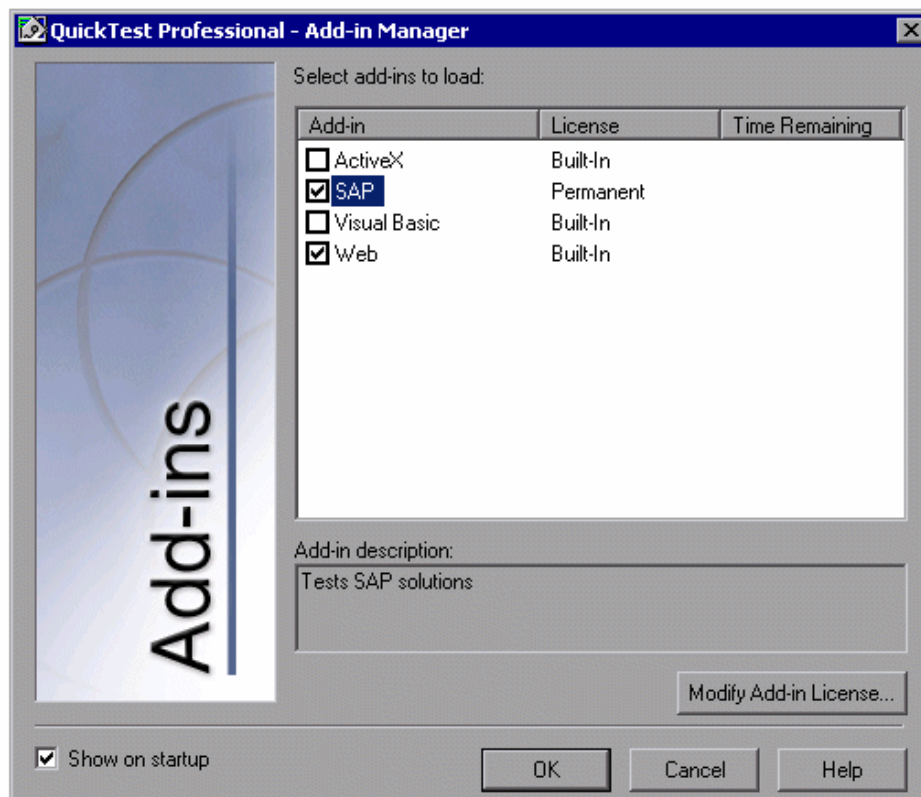
You use the Add-in Manager to load support for testing SAP Solutions applications.

To start QuickTest with add-in support for testing SAP applications:

1. Choose **Start > Programs > QuickTest Professional > QuickTest Professional**. The QuickTest Professional - Add-in Manager dialog box opens.

(If the Add-in Manager dialog box does not open, see [Displaying the Add-in Manager Dialog Box](#).)

2. In the add-in list, select **SAP** and **Web**.



Click **OK**.

Author :
Prakash.N
SAP Consultant,
Bangalore – 64.

Email: prakasz@yahoo.com
mob : +91 9980802974

For more information about the Add-in Manager dialog box, refer to the *QuickTest Professional User's Guide*.

Displaying the Add-in Manager Dialog Box

If the Add-in Manager dialog box does not open when you open QuickTest:

1. Choose **Start > Programs > QuickTest Professional > QuickTest Professional** to start QuickTest.
2. From the QuickTest menu, choose **Tools > Options** and click the **General** tab.
3. Select **Display Add-in Manager on startup**.
4. Click **OK** to close the Options dialog box.
5. Close and reopen QuickTest.

Checking Package and Patch Versions Installed on the SAP Application Server

To use the QuickTest Professional Add-in for SAP Solutions, you must confirm that you have the correct support package and kernel patch levels for your software component release. The following table shows the **minimum** required. You must have these versions/levels or higher:

Software Component	Release	Support Package	Kernel Patch Level
SAP_APPL	31I	SAPKH31I96	Kernel 3.1I level 650
SAP_APPL	40B	SAPKH40B71	Kernel 4.0B level 903
SAP_APPL	45B	SAPKH45B49	Kernel 4.5B level 753
SAP_BASIS	46B	SAPKB46B37	Kernel 4.6D level 948
SAP_BASIS	46C	SAPKB46C29	Kernel 4.6D level 948
SAP_BASIS	46D	SAPKB46D17	Kernel 4.6D level 948
SAP_BASIS	610	SAPKB61012	Kernel 6.10 level 360

- Check the support package
- Check the kernel patch level

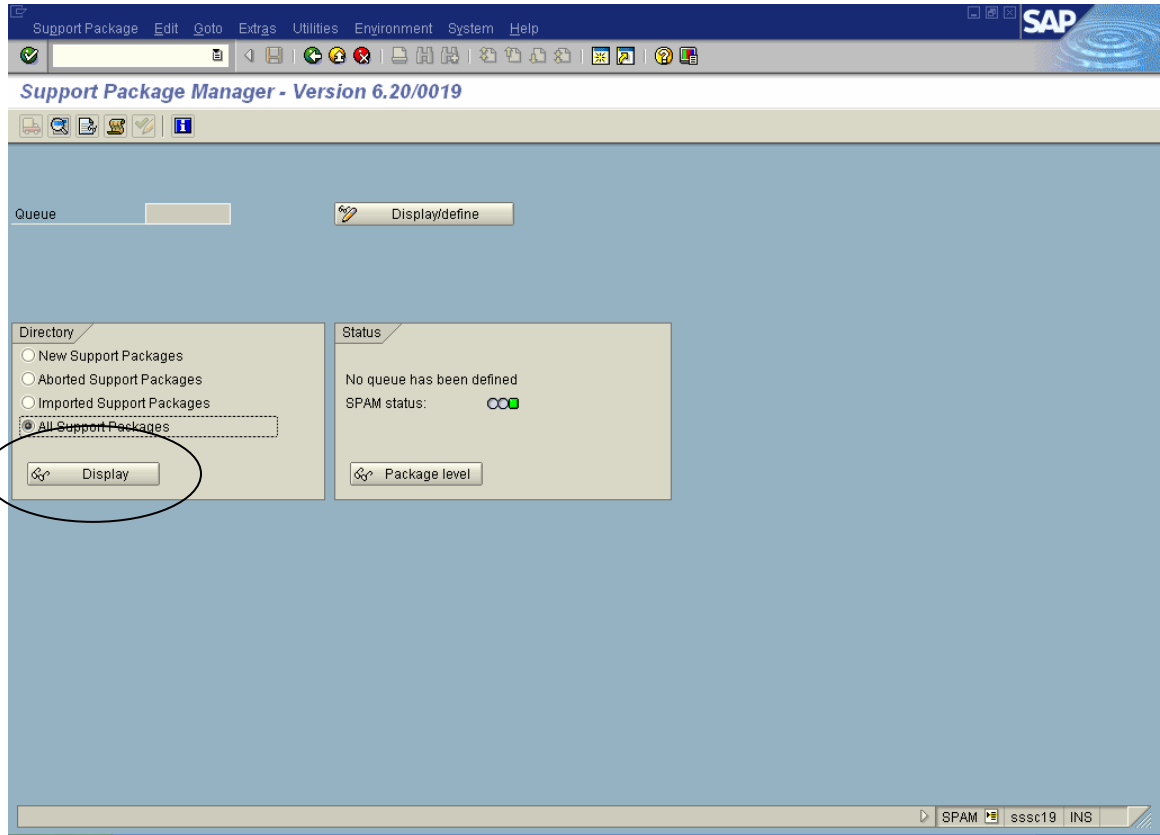
To check the support package:

1. Log on to your SAP server.

Author :
Prakash.N
SAP Consultant,
Bangalore – 64.

Email: prakasz@yahoo.com
mob : +91 9980802974

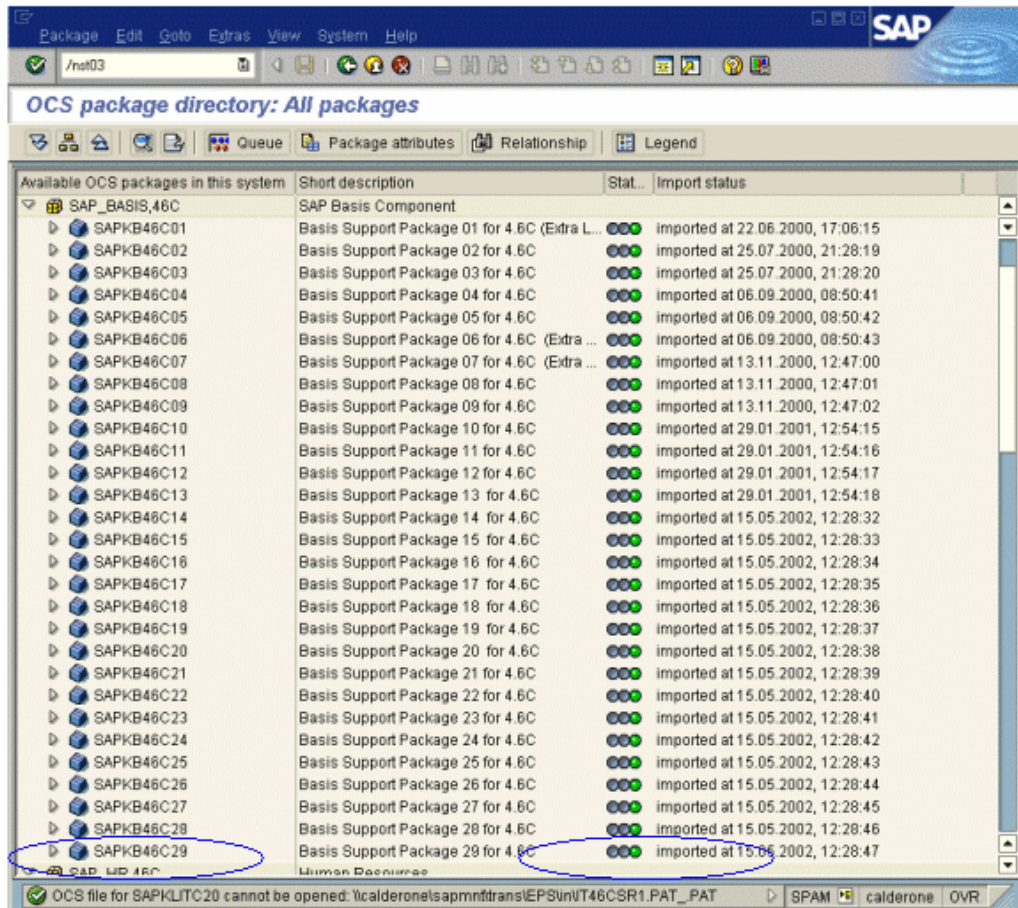
2. Run the SPAM transaction.



3. In the **Directory** section, select **All Support Packages** and click the **Display** button.
4. The All packages window opens. Verify that the correct package is installed for the SAP release you are using (see Checking Package and Patch Versions Installed on the SAP Application Server).

Author :
Prakash.N
SAP Consultant,
Bangalore – 64.

Email: prakasz@yahoo.com
mob : +91 9980802974



If the correct package is installed, a green light icon is displayed in the **Status** column.

If you do not have the required package installed, download and install it.

For more information on downloading and installing the required package, refer to SAP OSS note # 480149.

To check the kernel patch level:

1. Log on to your SAP server.

Author :
Prakash.N
SAP Consultant,
Bangalore – 64.

Email: prakaszk@yahoo.com
mob : +91 9980802974

2. Choose **System > Status**. The System: Status dialog box opens.

Usage data			
Client	200	Previous logon	24.07.2006 17:38:09
User	3P_PRAKASHN	Logon	18:11:21
Language	EN	System time	18:20:51

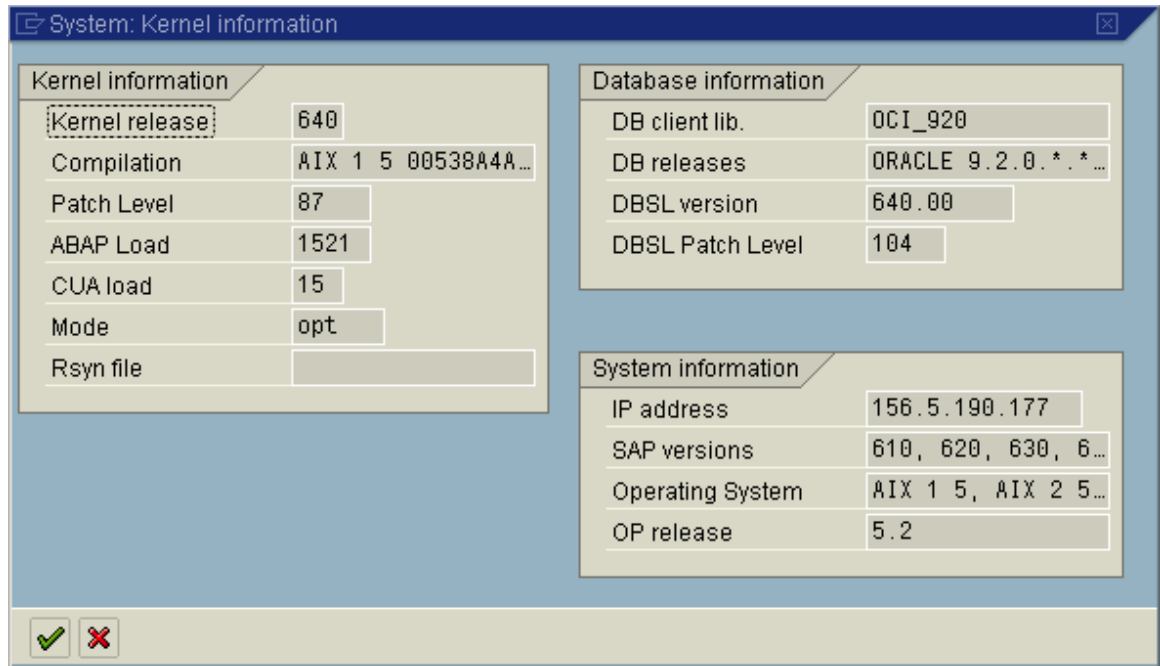
Repository data		SAP System data	
Transaction	SPAM	Component version	BBPCRM 3.1
Program (screen)	SPAM_DISPLAY...	Installation number	0020211464
Screen number	100	License expiration	31.12.9999
Program (GUI)	SPAM_DISPLAY...	Unicode System	No
GUI status	SCREEN_100		


Host data		Database data	
Operating system	AIX	Database system	ORACLE
Machine type	00374CFC4C	Release	9.2.0.5.0
Server name	sssc19_SL1_01	Name	SL1
Platform ID	324	Host	sssc19
		Owner	SAPSL1

At the bottom of the dialog, there is a 'Navigate' button with a green checkmark icon, a green arrow icon, and a red 'X' icon.

Author :
Prakash.N
SAP Consultant,
Bangalore – 64.

Email: prakasz@yahoo.com
mob : +91 9980802974



3. Click the **Other kernel information** button.  The System: Kernel information dialog box opens.

4. In the **Kernel information** section, check the value of the **Sup. Pckg. lvl.**

If the level is lower than the required level for the SAP release you are using (see Checking Package and Patch Versions Installed on the SAP Application Server), you must download the latest kernel version and upgrade your existing one.

For more information on downloading and installing the required kernel patch level, refer to SAP OSS note #480149.

Checking the Patch Version Installed on your SAP Gui for Windows Application


If you want to test your SAP Gui for Windows application with the QuickTest Professional Add-in for SAP Solutions, make sure that the minimum required patch level is installed. For more information about required patch levels, refer to the *QuickTest Professional Add-in for SAP Solutions Readme*.

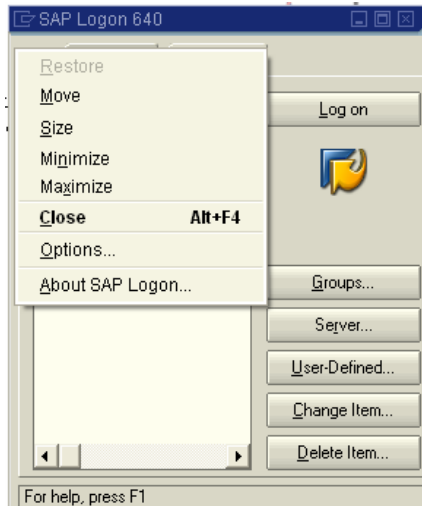
Note: If the minimum required patch level is not installed, an error message displays when you try to record on your SAP Gui for Windows application.

To check the patch level on your SAP Gui for Windows application:

Author :
Prakash.N
SAP Consultant,
Bangalore – 64.

Email: prakas@yaho.com
mob : +91 9980802974

1. Open the SAP Logon dialog box and click the button  on the left side of the SAP Logon dialog box's title bar. Then choose **About SAP Logon** from the menu



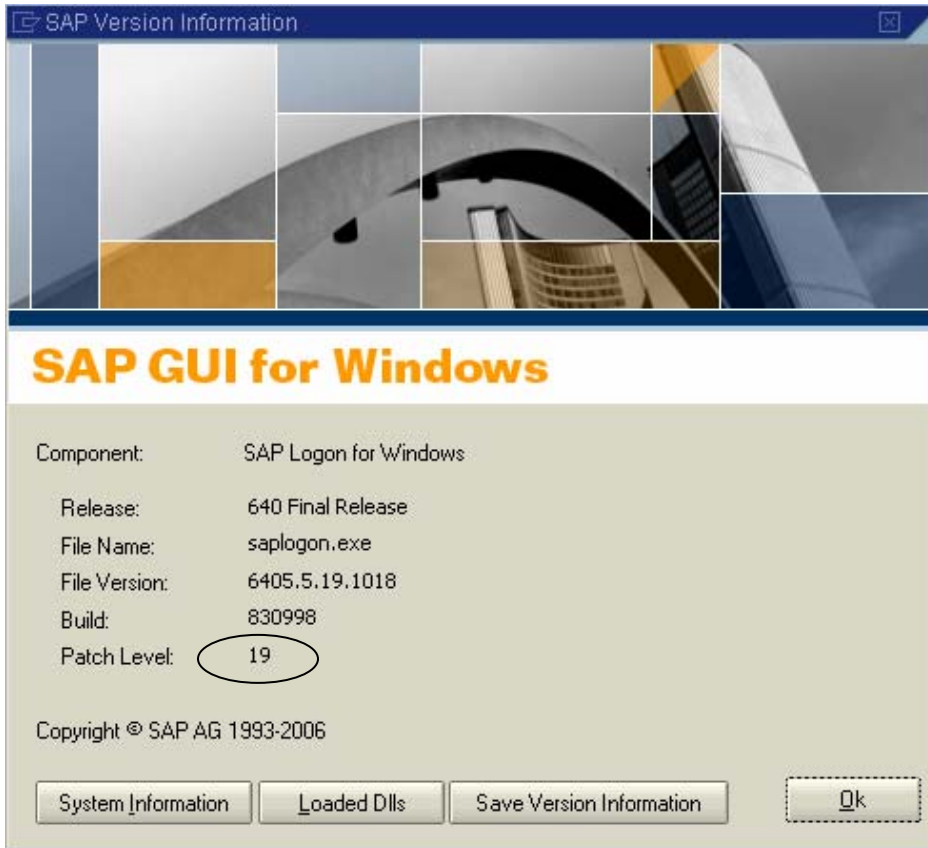
The SAP Version Information dialog box opens.

In the SAP Version Information dialog box, confirm that the minimum required patch level is installed.

1. In the SAP Version Information dialog box, confirm that the minimum required patch level is installed.

Author :
Prakash.N
SAP Consultant,
Bangalore – 64.

Email: prakasz@yahoo.com
mob : +91 9980802974



Enabling Scripting

QuickTest communicates directly with the SAP Gui Scripting API to record and run your operations on SAP Windows objects. For example, QuickTest records steps based directly on the API events that are sent from the client to the SAP server. Therefore, to record and run QuickTest tests and components on your SAP Gui for Windows application, you must enable scripting on both the server-side and client-side. For more information, see the following sections:

- Enabling Scripting on the SAP Application (Server-Side)
- Enabling Scripting on the SAP Application (Client-Side)

Enabling Scripting on the SAP Application (Server-Side)

After you confirm that you have the proper support package and kernel patch levels installed, you must enable scripting on your SAP application. By default, scripting is disabled.

You enable scripting by entering the Maintain Profile Parameters window with administrative permissions and setting the *sapgui/user_scripting* profile parameter to TRUE on the application server.

To enable scripting for all users, set this parameter on all application servers. To enable scripting for a specific group of users, set the parameter only on application servers with the appropriate access restriction settings.

Author :
Prakash.N
SAP Consultant,
Bangalore – 64.

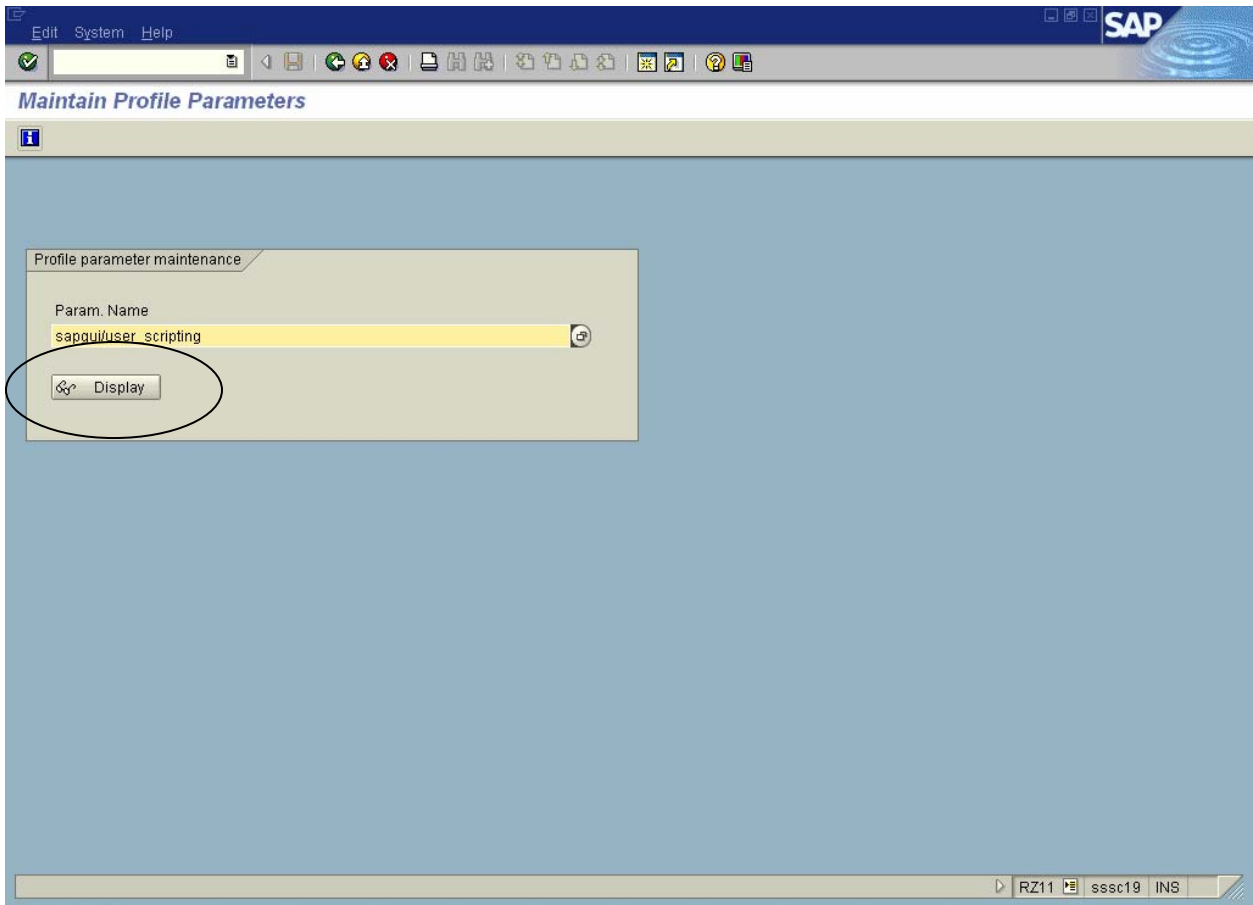
Email: prakasaz@yahoo.com
mob : +91 9980802974

Note: If you connect to a server on which scripting is disabled, an error message displays when you try to record on your SAP Gui for Windows application.

To change the profile parameter:

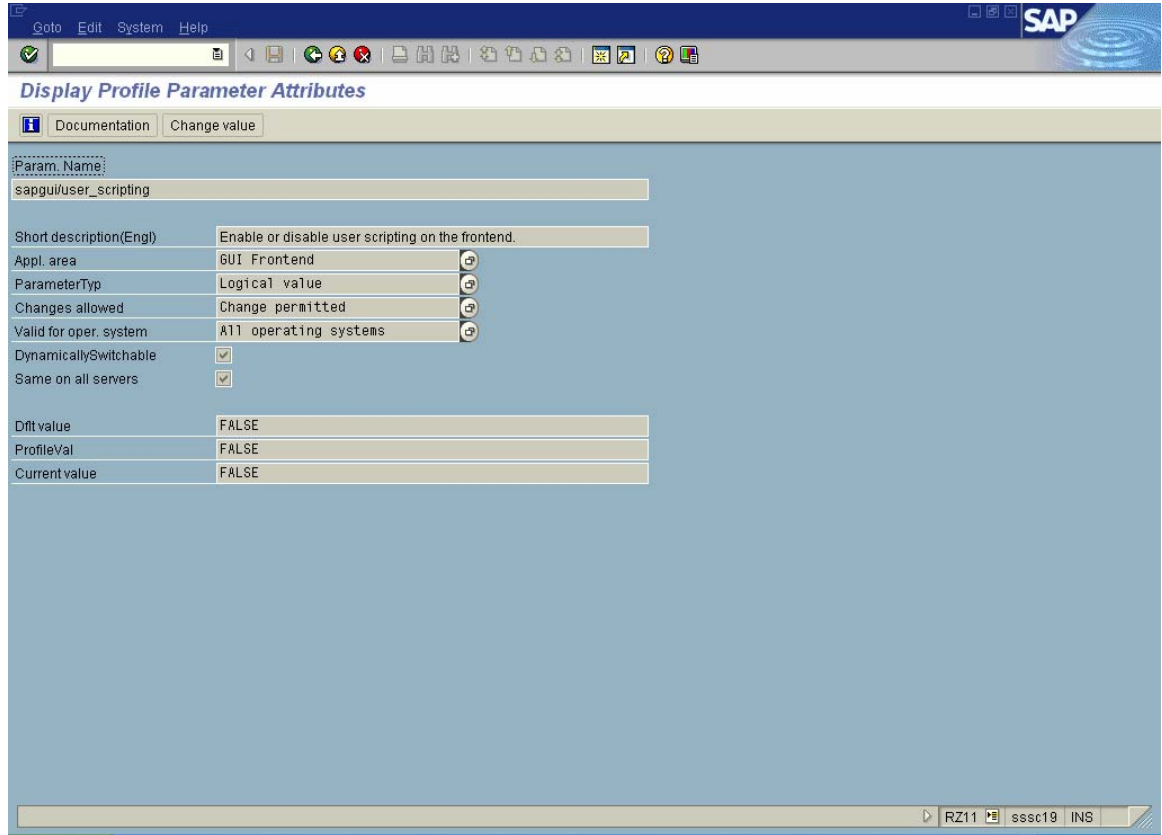
1. Enter **/nrz11** in the OKCode edit box to open transaction **rz11**.
2. In the **Param. Name** box of the Maintain Profile Parameters window, enter

sapgui/user_scripting and click the **Display** button .



Author :
Prakash.N
SAP Consultant,
Bangalore – 64.

Email: prakasz@yahoo.com
mob : +91 9980802974

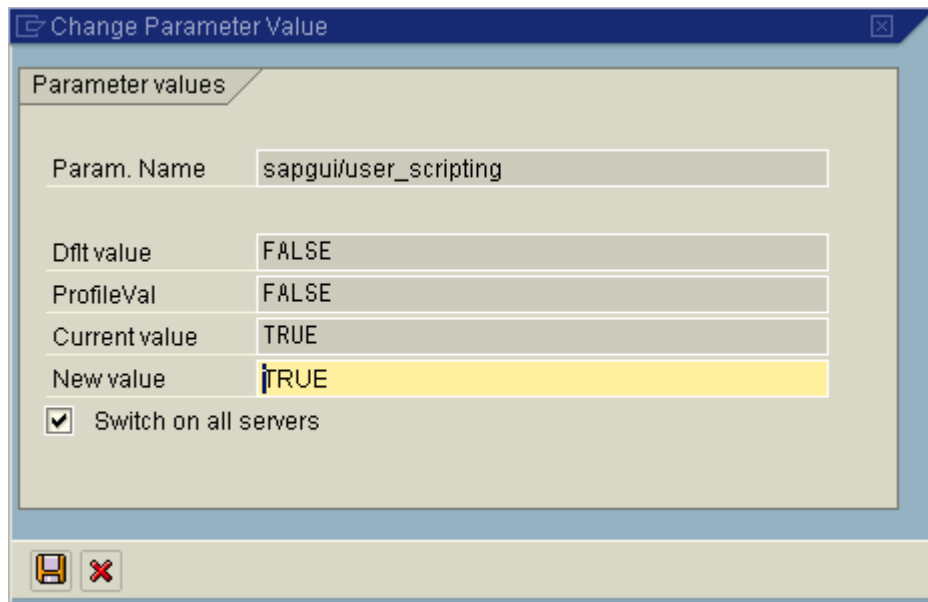


Note: If the message **Parameter name is unknown** is displayed in the status bar, your client lacks the required support package (see Checking the Patch Version Installed on your SAP Gui for Windows Application). Download and install the support package that corresponds to the SAP release you are using and then repeat steps [1](#) and [2](#).

Author :
Prakash.N
SAP Consultant,
Bangalore – 64.

Email: prakasz@yahoo.com
mob : +91 9980802974

The Display Profile Parameter Attributes window opens.



3. If **ProfileVal** is FALSE, you must modify its value. To modify it, click the **Change value** button . The Change Parameter Value window opens.
4. Enter **TRUE** in the **ProfileVal** box and click the **Save** button .

Note: You must enter **TRUE** in all capital letters. Entering **True** or **true** has no effect.

When you save the change, the window closes and the value of the parameter is displayed as **TRUE**. However, this change takes effect only when you log on to the system. Therefore, before beginning to work with the QuickTest Professional Add-in for SAP Solutions, you must log off and log on again. You may also need to restart the SAP Service from the SAP Console.

If you find that even after restarting the SAP Service from the SAP Console and logging on again to the client, your change to the ProfileVal parameter was not saved, you may have an outdated kernel version. In this case, either restart the application server or download and import the required kernel patch, as specified below.

Author :
Prakash.N
SAP Consultant,
Bangalore – 64.

Email: prakas@yaho.com
mob : +91 9980802974

Release	Kernel Version	Patch Level
6.10	6.10	391
6.20	all versions	all levels
6.40	all versions	all levels

For more information and download guidelines, refer to SAP OSS note # 480149

Enabling Scripting on the SAP Application (Client-Side)

To test SAP Gui for Windows applications with QuickTest Professional, you must confirm that scripting is enabled on the SAP Gui for Windows client.

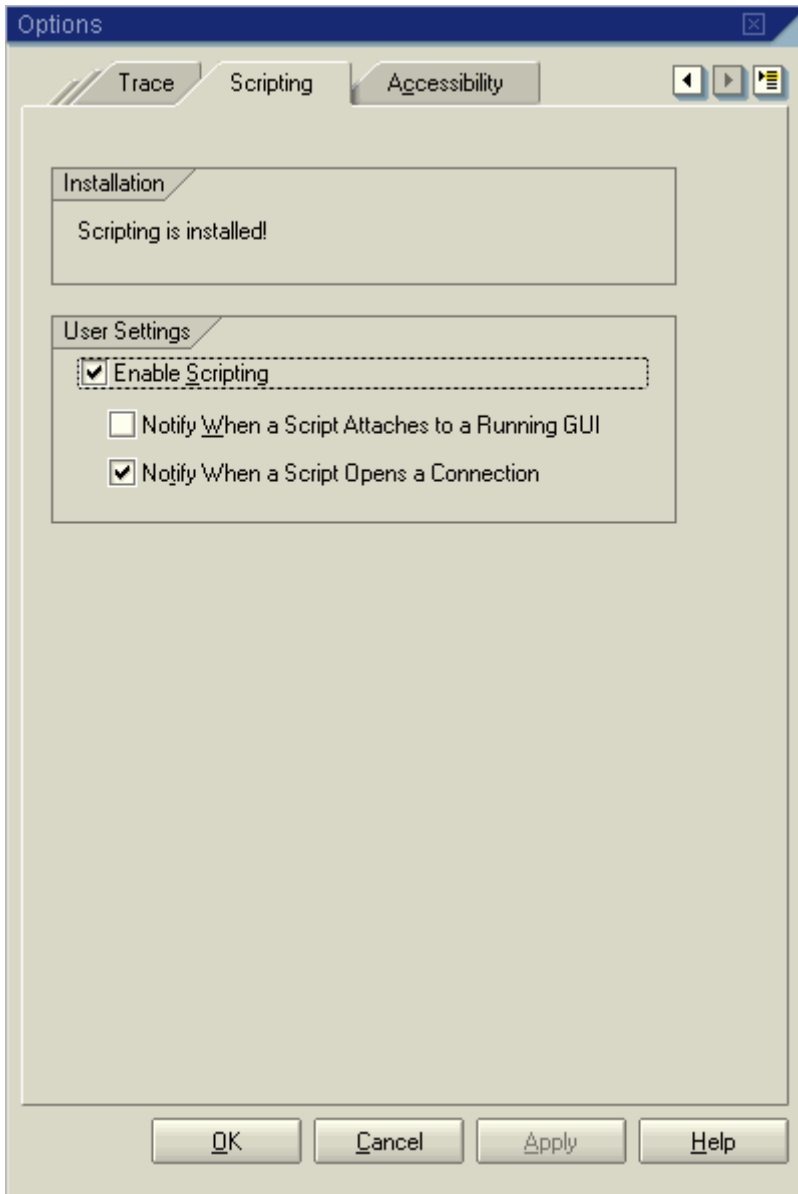
It is also recommended to [disable warning messages](#) in the SAP Gui for Windows environment when working with QuickTest Professional.

To ensure that scripting is enabled on the SAP Gui for Windows client:

1. Log on to your SAP server.
2. Click the **Customizing of Local Layout** SAP toolbar button and then choose **Options**. The Options dialog box opens.
3. Click the **Scripting** tab.
4. Confirm that the **Enable Scripting** check box is selected. If the **Enable Scripting** check box is cleared, select it.
5. If the **Scripting is installed** message is not displayed in the **Installation** area, or the **Enable Scripting** check box is disabled, then the **SAP GUI Scripting** option is not installed. Reinstall your SAP Gui for Windows application and be sure to select the **SAP GUI Scripting** check box.

Author :
Prakash.N
SAP Consultant,
Bangalore – 64.

Email: prakashz@yahoo.com
mob : +91 9980802974



Author :
Prakash.N
SAP Consultant,
Bangalore – 64.

Email: prakasz@yahoo.com
mob : +91 9980802974

Configuring eCATT to Work with QuickTest

Before you can use the eCATT-QuickTest integration features available with the QuickTest Professional Add-in for SAP Solutions, you (or an eCATT system administrator) must install the appropriate support package and configure the eCATT server to work with QuickTest.

For information on specific SAP server version and support package requirements, refer to the *QuickTest Professional Add-in for SAP Solutions Readme*.

This section describes:

- About Configuring eCATT to Work with QuickTest
- Setting External Tool Parameters in the ECCUST_ET Table
- Applying Necessary Roles or Profiles to eCATT-QuickTest Users

About Configuring eCATT to Work with QuickTest

To enable eCATT-QuickTest integration, an SAP user with administrative privileges must:

- Update the eCATT server with the appropriate support package. Contact SAP or your SAP representative to receive the necessary support package.
- Set external tool parameters in the ECCUST_ET table.
- Apply the necessary roles or profiles to each user who wants to work with QuickTest and eCATT.

Setting External Tool Parameters in the ECCUST_ET Table

To enable eCATT to communicate with QuickTest, certain values must be set for the external tool parameters in the ECCUST_ET table. This procedure should be performed only once in the system.

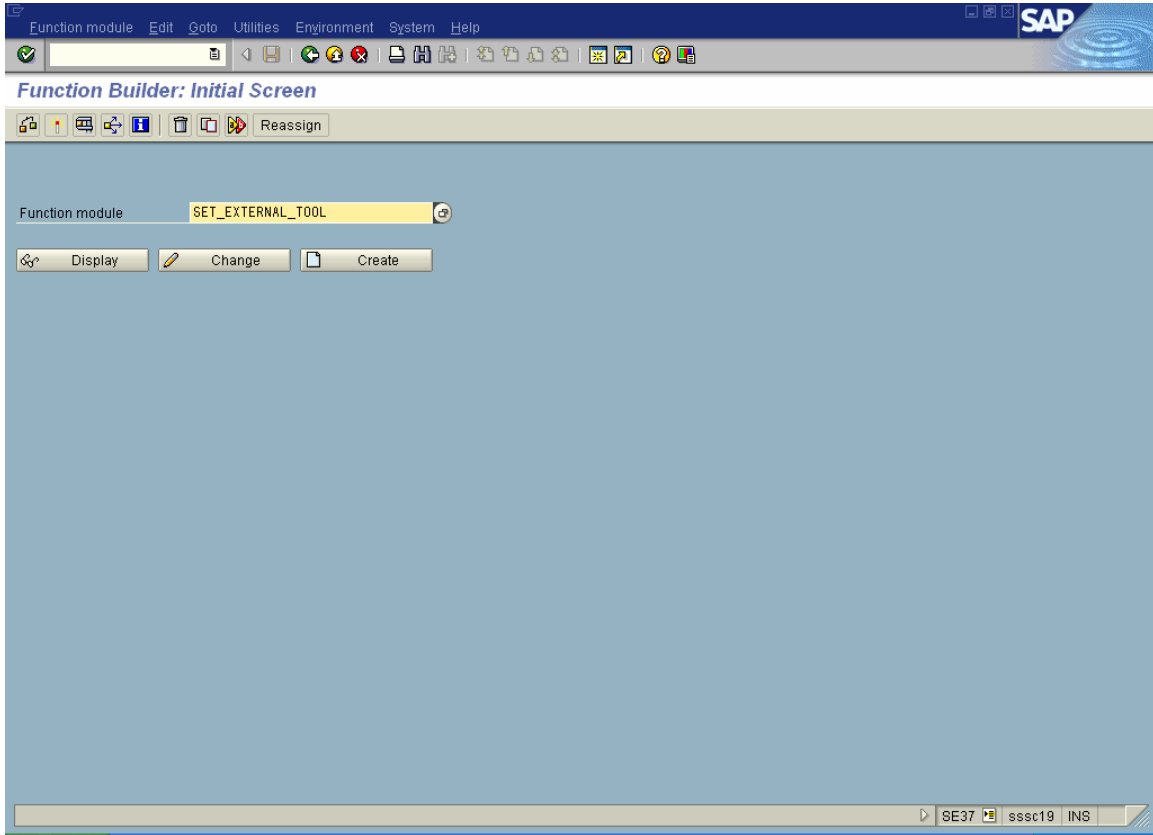
To set parameter values in the ECCUST_ET Table:

1. Navigate to transaction **se17**. The General Table Display window opens.
2. In the **Table Name** box, enter ECCUST_ET and press ENTER.
3. The Display Table ECCUST_ET window opens and displays an empty table with the required parameter names.
4. Enter the values exactly as shown below:

Other wise you can also use the function module **SET_EXTERNAL_TOOL** to create entries in the customizing table. For more information, refer to your eCATT documentation.

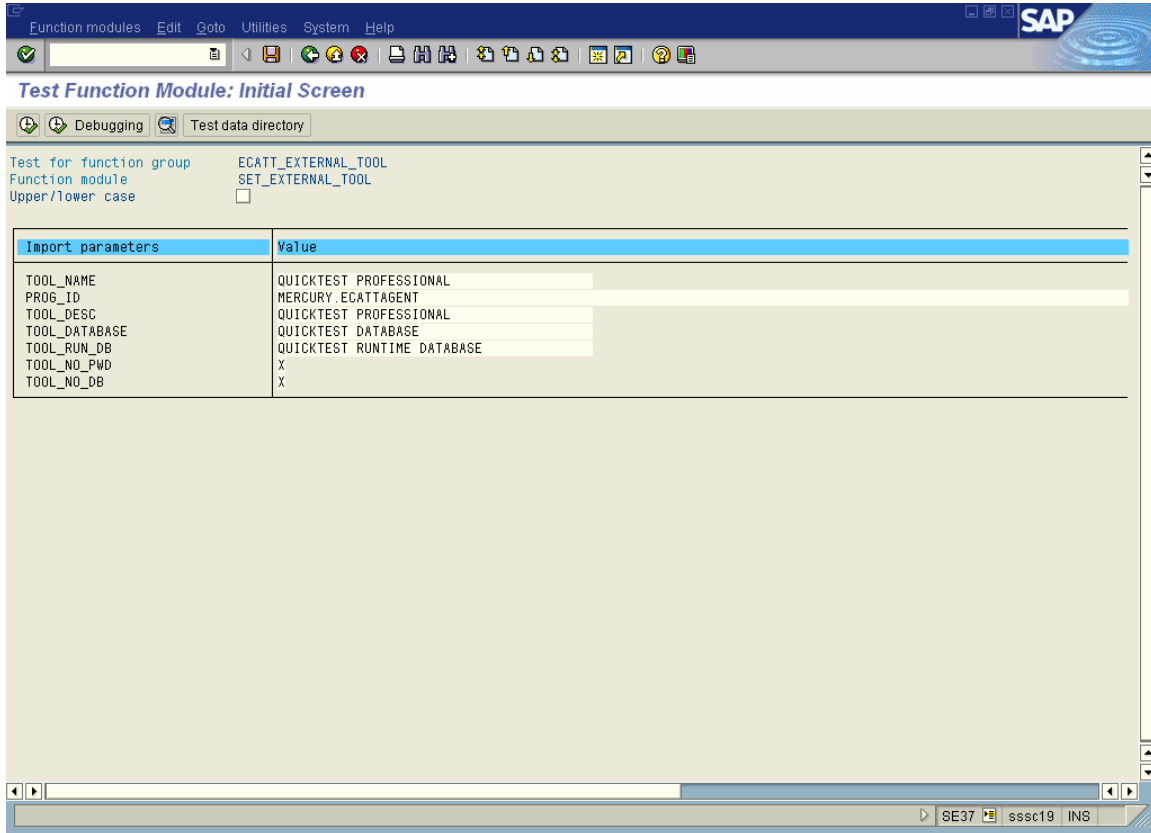
Author :
Prakash.N
SAP Consultant,
Bangalore – 64.

Email: prakasz@yahoo.com
mob : +91 9980802974



Author :
Prakash.N
SAP Consultant,
Bangalore – 64.

Email: prakaszi@yahoo.com
mob : +91 9980802974



Click Execute, It will insert the values into ECCUST_ET Table

Applying Necessary Roles or Profiles to eCATT-QuickTest Users

To perform all of the operations described in the following sections, you must have permission to:

- run eCATT scripts
- edit eCATT scripts
- work with an external tool (QuickTest) in integrated mode
- connect to eCATT from an external tool (QuickTest) in standalone mode

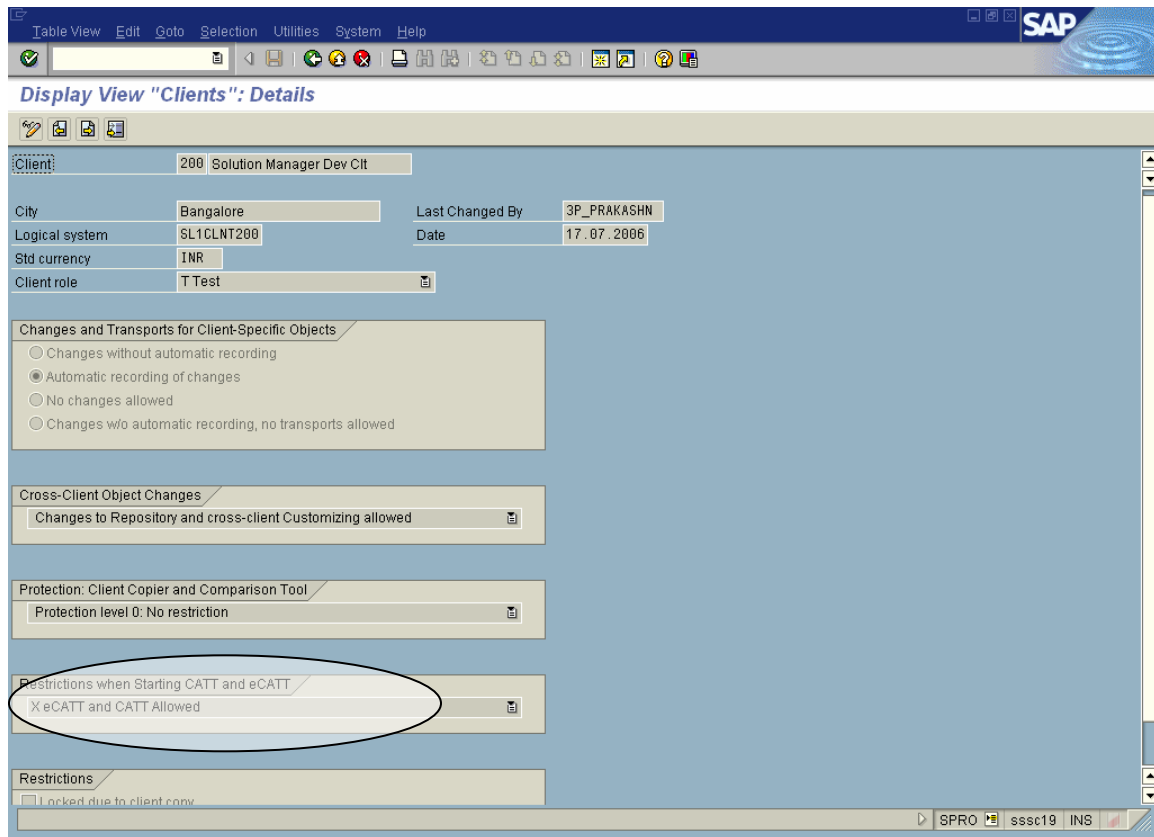
Each of these tasks requires special roles or profiles. Before you begin working with the QuickTest-eCATT integration, you should confirm with your system administrator that the user name you use is assigned the necessary roles or profiles to perform the above tasks. For example, to work with QuickTest in standalone mode, you must be assigned the role **S_ECET** or the profile **SAP_ECET** in the eCATT system.

For more information, contact your system administrator or refer to your SAP and eCATT documentation.

Author :
Prakash.N
SAP Consultant,
Bangalore – 64.

Email: prakasz@yahoo.com
mob : +91 9980802974

Also You have to change the CATT and eCATT settings in Client Creation in SPRO.



In Restrictions when Starting CATT and eCATT, that you have to select **X eCATT and CATT Allowed**. Then Save and Come Back.

Also you have to create one External User **ECATT_ET_USR** in SU01 Transaction and assign the Following roll.

SAP_ECAT
SAP_ECET
SAP_ECST

Author :
Prakash.N
SAP Consultant,
Bangalore – 64.

Email: prakasz@yahoo.com
mob : +91 9980802974

