



**How-to Guide  
SAP NetWeaver 2004s**

# **How To... Export Data from Visual Composer**

**Version 1.00 – September 2006**

**Applicable Releases:  
SAP NetWeaver 2004s  
(Custom Development - Developing, Configuring,  
and Adapting Applications)**

© Copyright 2007 SAP AG. All rights reserved.

No part of this publication may be reproduced or transmitted in any form or for any purpose without the express permission of SAP AG. The information contained herein may be changed without prior notice.

Some software products marketed by SAP AG and its distributors contain proprietary software components of other software vendors.

Microsoft, Windows, Outlook, and PowerPoint are registered trademarks of Microsoft Corporation.

IBM, DB2, DB2 Universal Database, OS/2, Parallel Sysplex, MVS/ESA, AIX, S/390, AS/400, OS/390, OS/400, iSeries, pSeries, xSeries, zSeries, z/OS, AFP, Intelligent Miner, WebSphere, Netfinity, Tivoli, and Informix are trademarks or registered trademarks of IBM Corporation in the United States and/or other countries.

Oracle is a registered trademark of Oracle Corporation.

UNIX, X/Open, OSF/1, and Motif are registered trademarks of the Open Group.

Citrix, ICA, Program Neighborhood, MetaFrame, WinFrame, VideoFrame, and MultiWin are trademarks or registered trademarks of Citrix Systems, Inc.

HTML, XML, XHTML and W3C are trademarks or registered trademarks of W3C<sup>®</sup>, World Wide Web Consortium, Massachusetts Institute of Technology.

Java is a registered trademark of Sun Microsystems, Inc.

JavaScript is a registered trademark of Sun Microsystems, Inc., used under license for technology invented and implemented by Netscape.

MaxDB is a trademark of MySQL AB, Sweden.

SAP, R/3, mySAP, mySAP.com, xApps, xApp, and other SAP products and services mentioned herein as well as their respective logos are trademarks or registered trademarks of SAP AG in Germany and in several other countries all over the world. All other product and service names mentioned are the trademarks of their respective companies. Data

contained in this document serves informational purposes only. National product specifications may vary.

These materials are subject to change without notice. These materials are provided by SAP AG and its affiliated companies ("SAP Group") for informational purposes only, without representation or warranty of any kind, and SAP Group shall not be liable for errors or omissions with respect to the materials. The only warranties for SAP Group products and services are those that are set forth in the express warranty statements accompanying such products and services, if any. Nothing herein should be construed as constituting an additional warranty.

These materials are provided "as is" without a warranty of any kind, either express or implied, including but not limited to, the implied warranties of merchantability, fitness for a particular purpose, or non-infringement. SAP shall not be liable for damages of any kind including without limitation direct, special, indirect, or consequential damages that may result from the use of these materials.

SAP does not warrant the accuracy or completeness of the information, text, graphics, links or other items contained within these materials. SAP has no control over the information that you may access through the use of hot links contained in these materials and does not endorse your use of third party web pages nor provide any warranty whatsoever relating to third party web pages.

SAP NetWeaver "How-to" Guides are intended to simplify the product implementation. While specific product features and procedures typically are explained in a practical business context, it is not implied that those features and procedures are the only approach in solving a specific business problem using SAP NetWeaver. Should you wish to receive additional information, clarification or support, please refer to SAP Consulting.

Any software coding and/or code lines /strings ("Code") included in this documentation are only examples and are not intended to be used in a productive system environment. The Code is only intended better explain and visualize the syntax and phrasing rules of certain coding. SAP does not warrant the correctness and completeness of the Code given herein, and SAP shall not be liable for errors or damages caused by the usage of the Code, except if such damages were caused by SAP intentionally or grossly negligent.

# 1 Scenario

In this guide, we will explore numerous ways to get data out of Visual Composer models. We will show how to use the native export functionality, as well as leveraging other export options to Excel, CSV, and PDF. This guide focuses on exporting data from tables, not the entire contents of the model, such as charts.

## 2 Introduction

Visual Composer offers some native functionality for export. This will be the first option we explore. After this, we will show how to do this with Web Design API. Web Design API Commands will export the contents of the data service and not any further navigation state of the Visual Composer data.

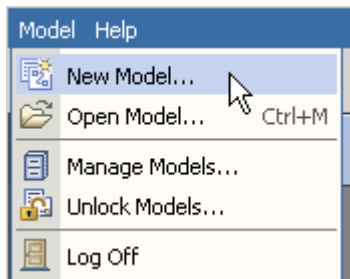
## 3 Pre-requisites

This guide requires that your BI query resides on a SAP NetWeaver 2004s system. It doesn't matter whether the query was built with the BW 3.x or the SAP NetWeaver 2004s runtime, but the query must be on the SAP NetWeaver 2004s runtime.

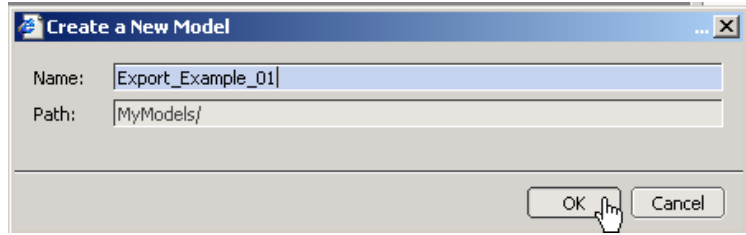
## 4 The Step By Step Solution

### 4.1 Using the native Visual Composer Export Data Functionality

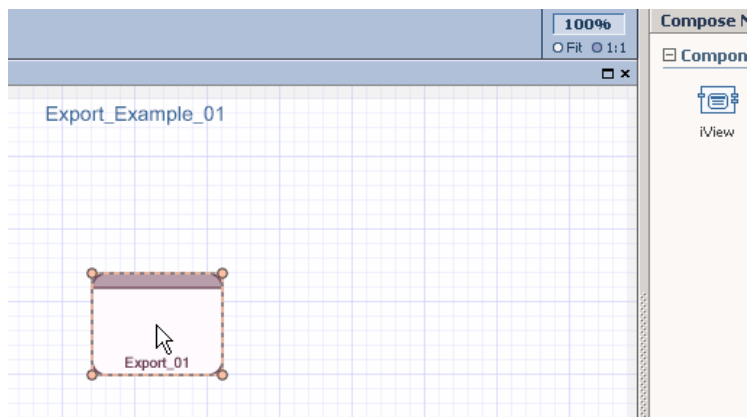
1. Create a new Visual Composer model.



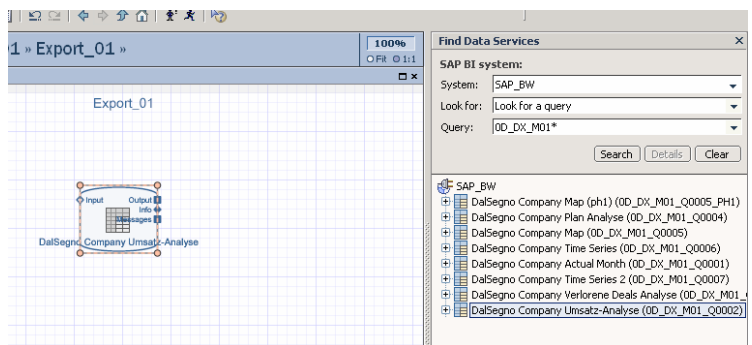
2. Name your model.



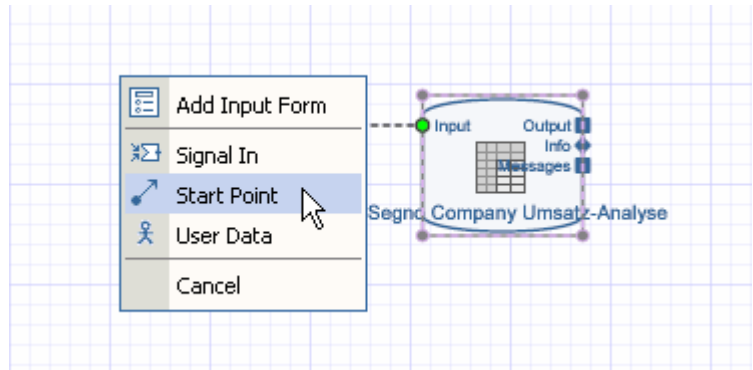
3. Drag and drop an iView into your storyboard and name the iView. Double click on this to enter the contents of the iView.



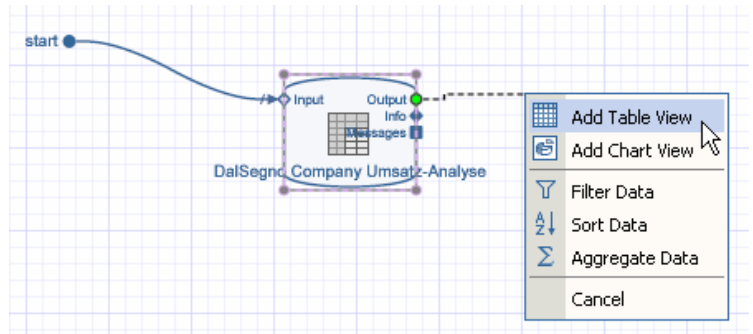
4. Search for a BI Query and drag and drop this into your iView.



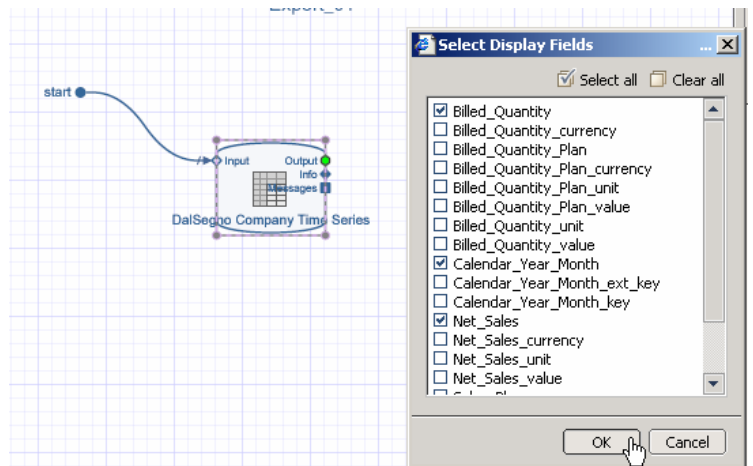
5. Drag and drop a start point from the Input port of your data service.



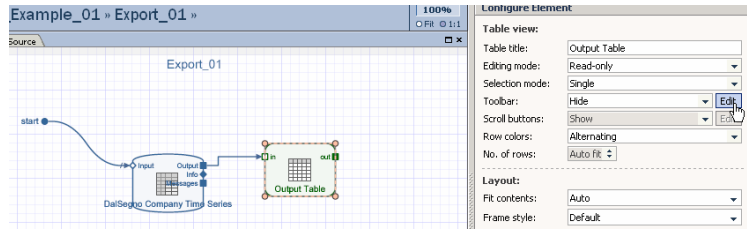
6. Drag and drop a "Table" from the output port.



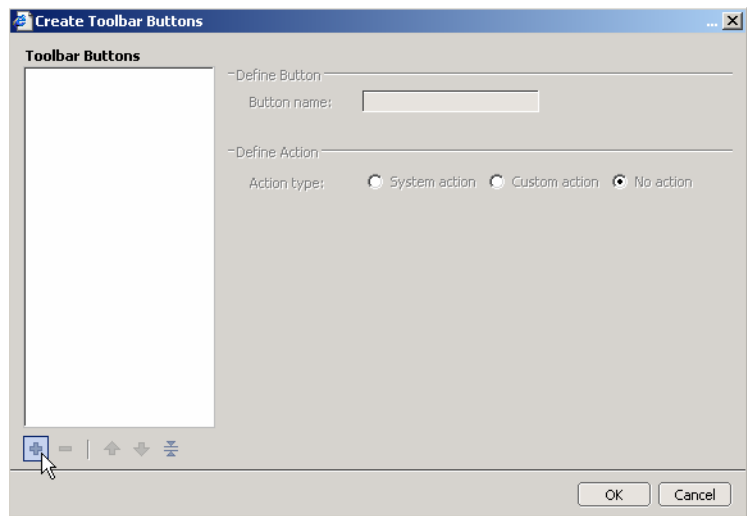
7. Choose your output fields and click OK.



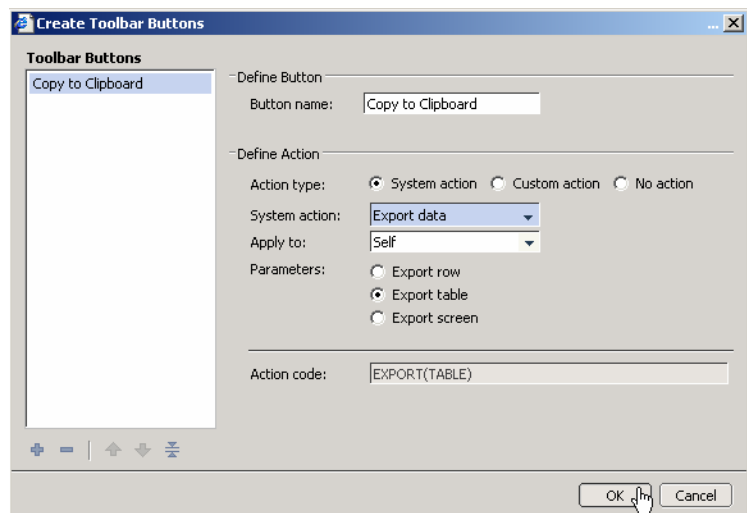
- Double click on the table element and add a toolbar by clicking the “Edit” element under the toolbar for the table.



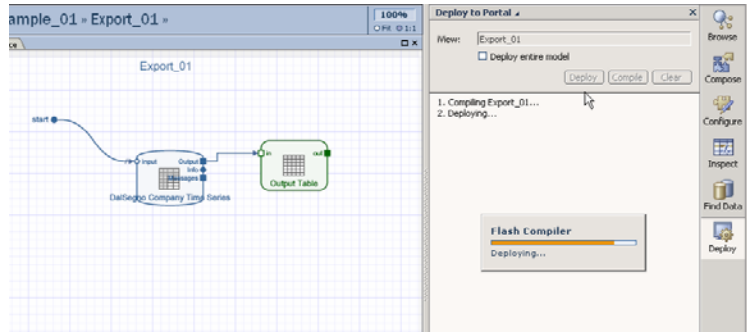
- Choose the “Add button” option.



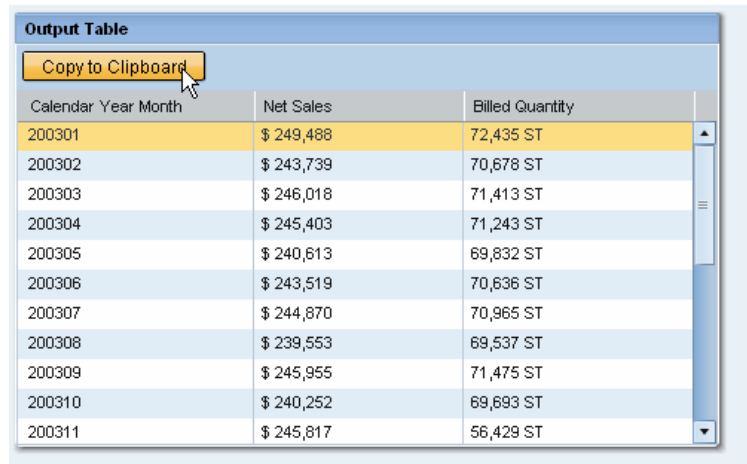
- Add the following “Copy to Clipboard” option. This button will take the data from the Visual Composer table and copy it to your clipboard.



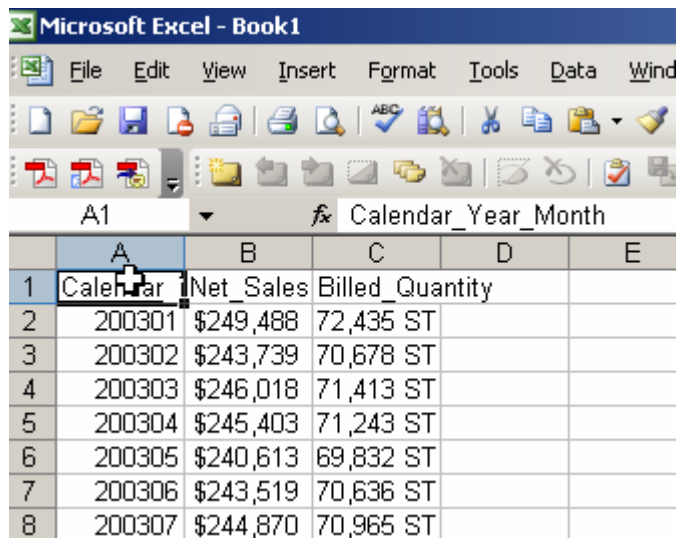
11. Deploy your model.



12. At runtime, click the “Copy to Clipboard” button.



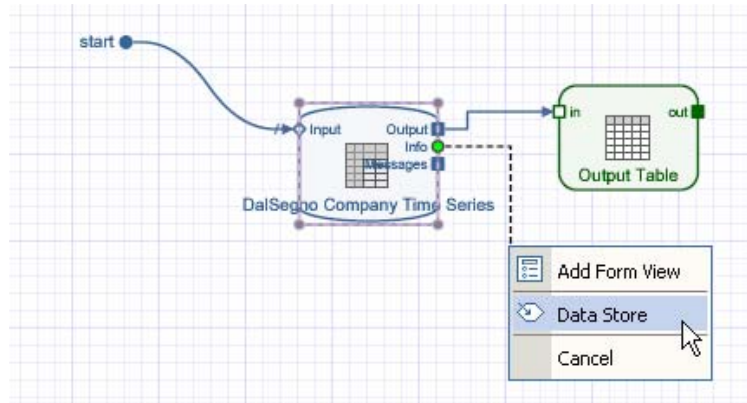
13. Launch Excel and hit “CTRL+V” to paste your data in excel.



## 4.2 Using Web Design API to export to CSV

This section is continued from the previous section...

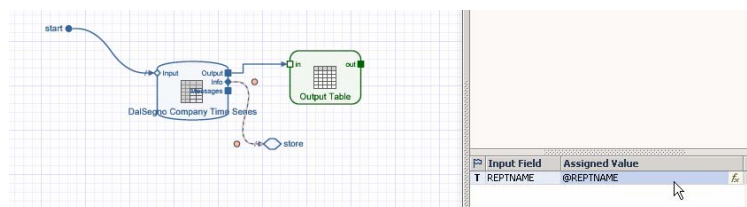
1. From the “Info” port of your BI Query Data service, drag and drop out a “Data Store” object.



2. Add the field “REPTNAME” to the Data Store Object.

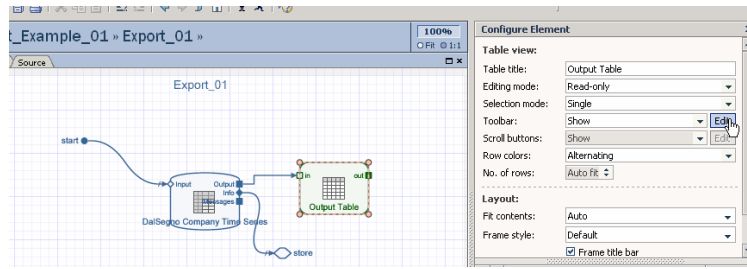
The 'Field Properties' dialog box is shown. It has a title bar with a close button. The fields are: 'Field name:' with the text 'REPTNAME'; 'Data type:' with a dropdown menu set to 'Text'; and 'Default value:' with an empty text box and a 'Formula' button. At the bottom, there are 'OK' and 'Cancel' buttons. The 'OK' button is highlighted with a mouse cursor.

3. Map the field “REPTNAME” from the info port to the data store.

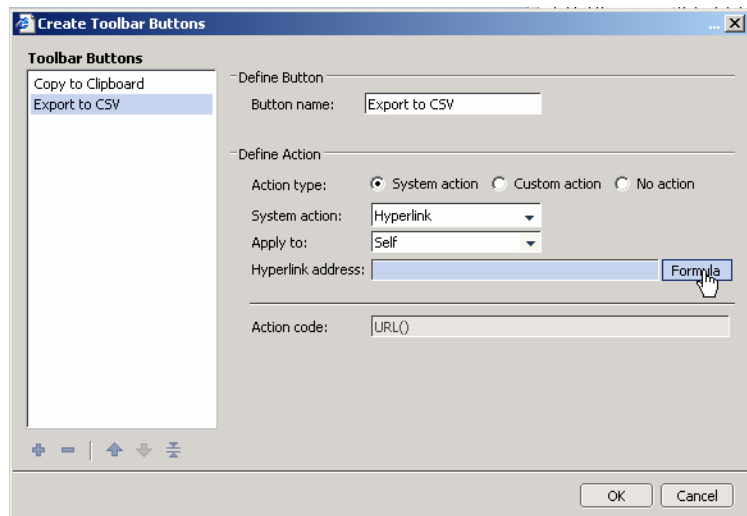




- Double click on the Output Table and choose "Edit" on the toolbar.



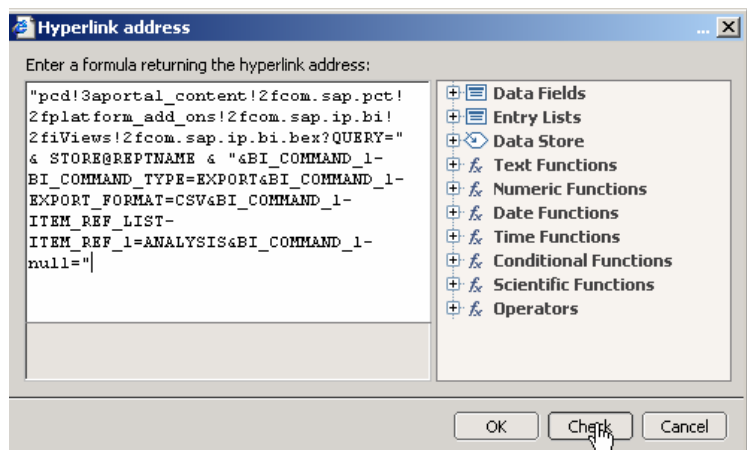
- Specify this button as "Export to CSV", System Action=Hyperlink, and then click Formula.



- Specify this formula:

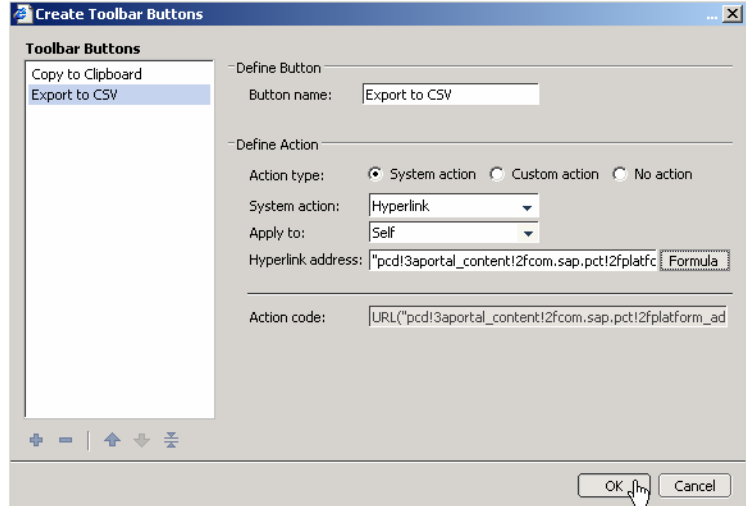
"pcd!3aportal\_content!2fcom.sap.pct!2fplatform\_add\_ons!2fcom.sap.ip.bi!2fiViews!2fcom.sap.ip.bi.bex?QUERY=" & STORE@REPTNAME & "&BI\_COMMAND\_1-BI\_COMMAND\_TYPE=EXPORT&BI\_COMMAND\_1-EXPORT\_FORMAT=CSV&BI\_COMMAND\_1-ITEM\_REF\_LIST-ITEM\_REF\_1=ANALYSIS&BI\_COMMAND\_1-null="

**NOTE:** This URL is for the Web Analyzer PCD Location if Visual Composer is on the same server as BI-JAVA. If it is not, see the section on Mapping External BI locations.

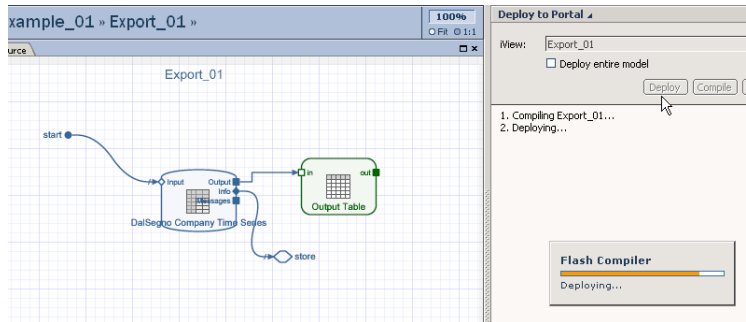


7. Choose OK.

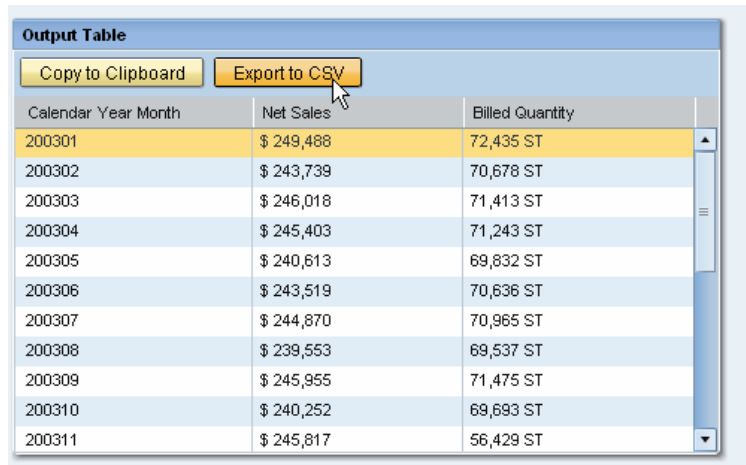
NOTE: This will export the default view of the data service to a CSV. It will not keep filters or navigation states.



8. Deploy your model.



9. Run your iView and choose "Export to CSV".



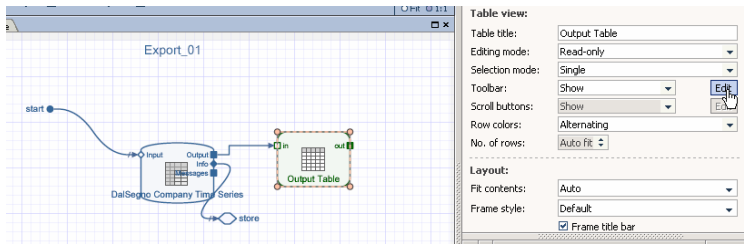
10. Look at your exported CSV file.

Calendar Year/Month	Net Sales	Billed Quantity	Sales Plan	Billed Quantity Plan
01/2003	249,488	72,435	240,206	69,511
02/2003	243,739	70,678	242,337	70,309
03/2003	246,018	71,413	246,929	71,475
04/2003	245,403	71,243	237,836	68,930
05/2003	240,613	69,832	233,671	67,813
06/2003	243,519	70,636	244,270	70,855
07/2003	244,870	70,965	245,154	70,995
08/2003	239,553	69,537	235,111	68,156
09/2003	245,955	71,475	230,702	66,916
10/2003	240,252	69,693	232,801	67,566
11/2003	245,817	56,429	242,229	55,632
12/2003	257,254	59,018	261,979	60,215
01/2004	246,178	56,428	251,051	57,383
02/2004	246,262	56,516	243,678	55,898
03/2004	249,904	57,306	261,407	60,185
04/2004	249,287	57,201	250,579	57,450
05/2004	245,810	56,396	251,640	57,728
06/2004	252,233	57,809	259,799	59,624
07/2004	250,721	57,529	256,358	58,764
08/2004	251,469	57,665	258,536	59,219
09/2004	250,852	57,371	239,696	54,902
10/2004	250,834	57,594	248,366	57,013
11/2004	248,768	57,089	249,088	57,138
12/2004	248,476	57,003	246,821	56,496

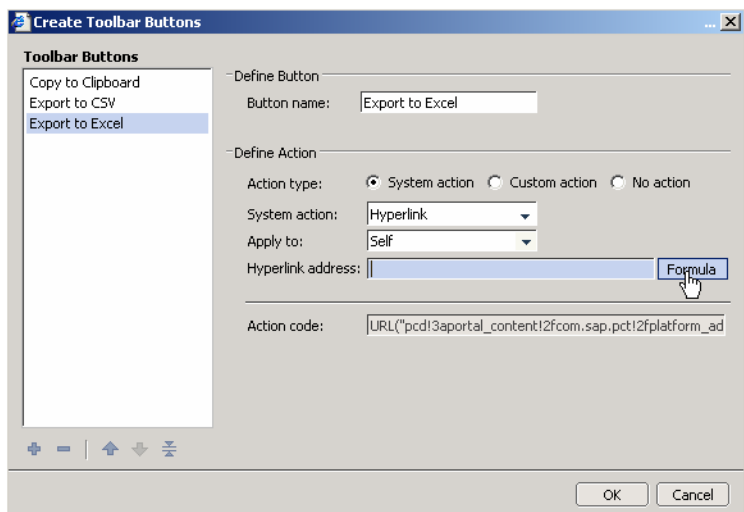
### 4.3 Using Web Design API to export to Excel

This section is continued from the previous section...

1. Double click on the Output Table and choose "Edit" on the toolbar.



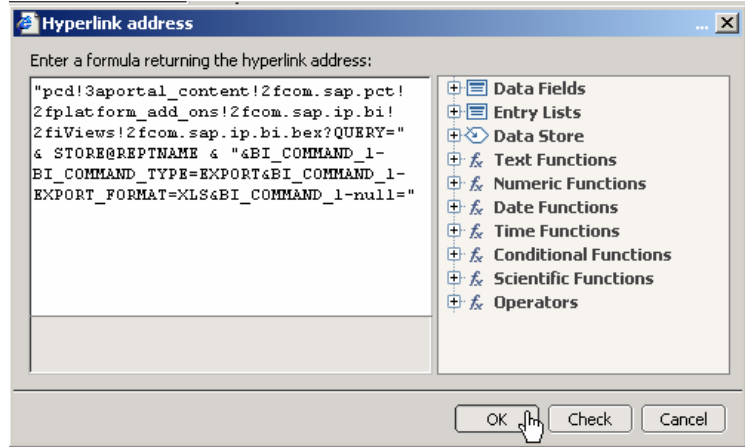
2. Specify this button as "Export to Excel", System Action=Hyperlink, and then click Formula.



3. Specify this formula:

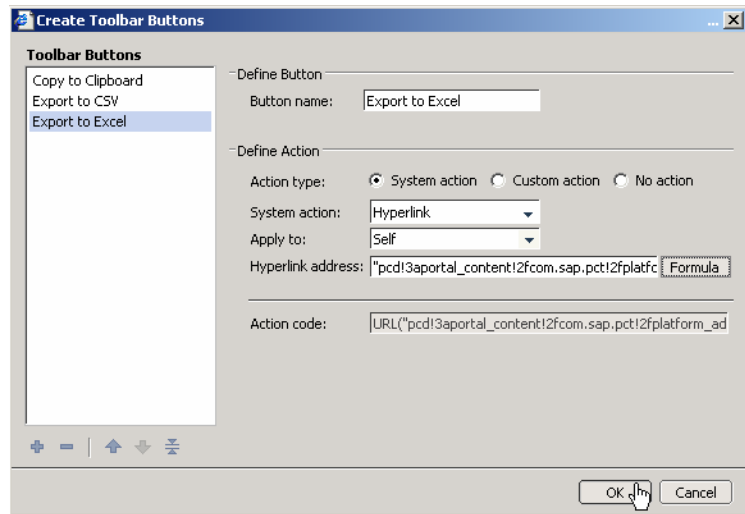
```
"pcd!3aportal_content!2fcom.sap.pct!2fplatform_add_ons!2fcom.sap.ip.bi!2fiViews!2fcom.sap.ip.bi.bex?QUERY=" & STORE@REPTNAME & "&BI_COMMAND_1-BI_COMMAND_TYPE=EXPORT&BI_COMMAND_1-EXPORT_FORMAT=XLS&BI_COMMAND_1-null="
```

**NOTE:** This URL is for the Web Analyzer PCD Location if Visual Composer is on the same server as BI-JAVA. If it is not, see the section on Mapping External BI locations.

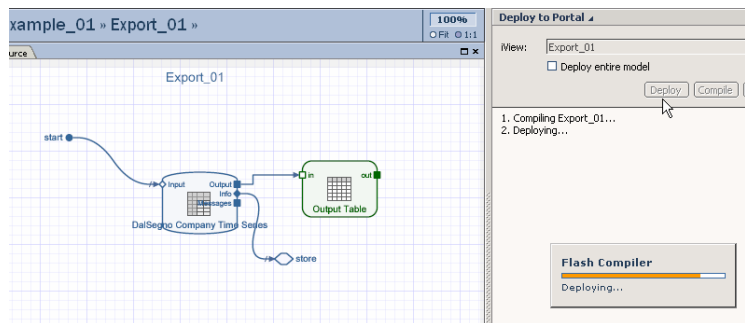


4. Choose OK.

**NOTE:** This will export the default view of the data service to an Excel File. It will not keep filters or navigation states.



5. Deploy your model.



6. Run your iView and choose “Export to Excel”.

Calendar Year Month	Net Sales	Billed Quantity
200301	\$ 249,488	72,435 ST
200302	\$ 243,739	70,678 ST
200303	\$ 246,018	71,413 ST
200304	\$ 245,403	71,243 ST
200305	\$ 240,613	69,832 ST
200306	\$ 243,519	70,636 ST
200307	\$ 244,870	70,965 ST
200308	\$ 239,553	69,537 ST
200309	\$ 245,955	71,475 ST
200310	\$ 240,252	69,693 ST
200311	\$ 245,817	56,429 ST

7. Look at your exported Excel file.

Calendar Year/Month	Net Sales * 1,000 \$	Billed Quantity * 1,000 ST	Sales Plan * 1,000 \$	Billed Quantity Plan * 1,000 ST
01/2003	249,488	72,435	240,206	69,511
02/2003	243,739	70,678	242,337	70,309
03/2003	246,018	71,413	246,929	71,476
04/2003	245,403	71,243	237,836	68,930
05/2003	240,613	69,832	233,671	67,813
06/2003	243,519	70,636	244,270	70,856
07/2003	244,870	70,965	245,154	70,996

#### 4.4 Using Web Design API to export to PDF

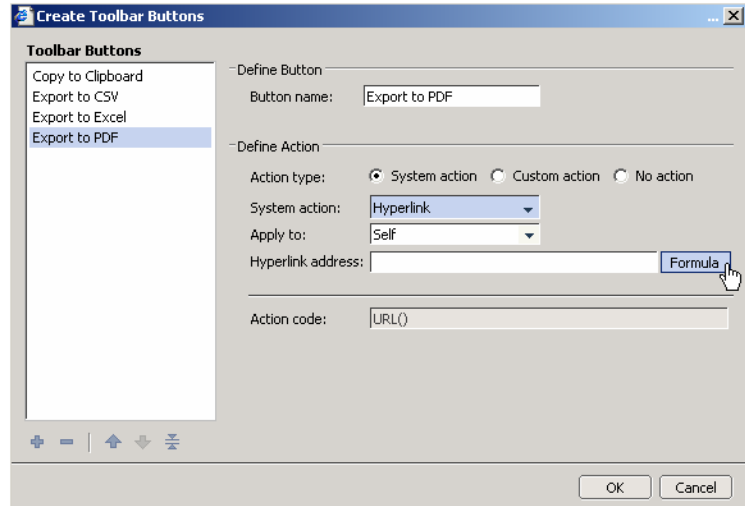
This section is continued from the previous section...

1. Double click on the Output Table and choose “Edit” on the toolbar.

The screenshot shows a design tool interface with a data flow diagram on the left and a 'Table view' properties panel on the right. The diagram includes a 'start' node, an 'input' node, a 'DataSegno Company Time Series' component, an 'Output Table' component, and an 'store' node. The 'Table view' panel has the following settings:

- Table title: Output Table
- Editing mode: Read-only
- Selection mode: Single
- Toolbar: Show
- Scroll buttons: Show
- Row colors: Alternating
- No. of rows: Auto fit
- Layout:
  - Fit contents: Auto
  - Frame style: Default
  - Frame title bar

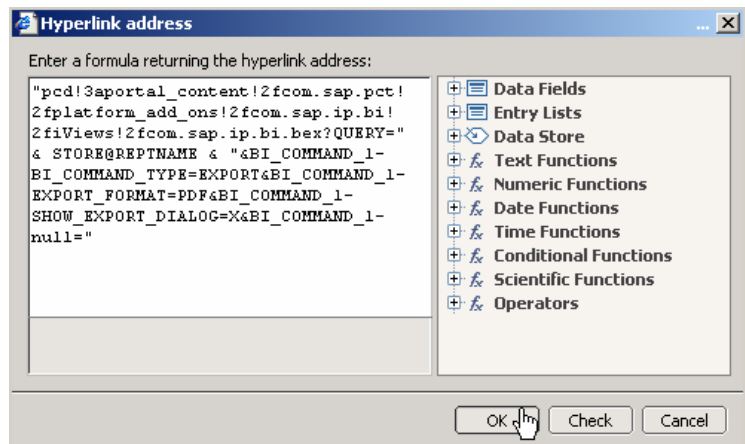
- Specify this button as “Export to PDFI”, System Action=Hyperlink, and then click Formula.



- Specify this formula:

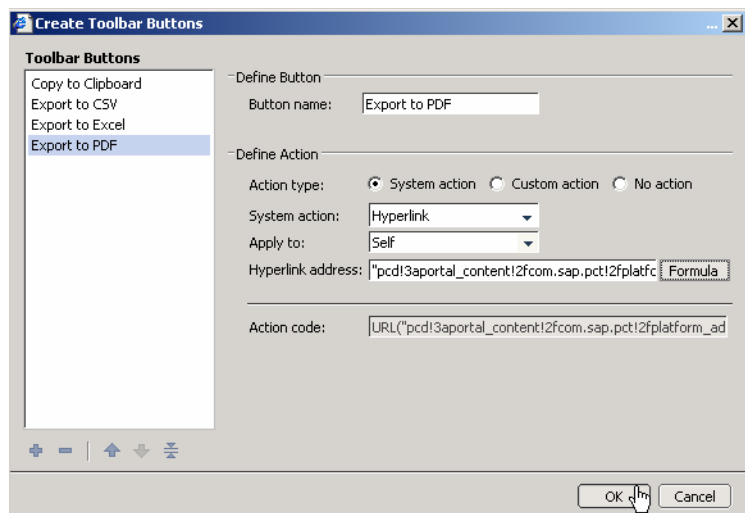
```
"pcd!3aportal_content!2fcom.sap.pct!2fplatform_add_ons!2fcom.sap.ip.bi!2fiViews!2fcom.sap.ip.bi.bex?QUERY=" & STORE@REPTNAME & "&BI_COMMAND_1-BI_COMMAND_TYPE=EXPORT&BI_COMMAND_1-EXPORT_FORMAT=PDF&BI_COMMAND_1-SHOW_EXPORT_DIALOG=X&BI_COMMAND_1-null="
```

**NOTE:** This URL is for the Web Analyzer PCD Location if Visual Composer is on the same server as BI-JAVA. If it is not, see the section on Mapping External BI locations.

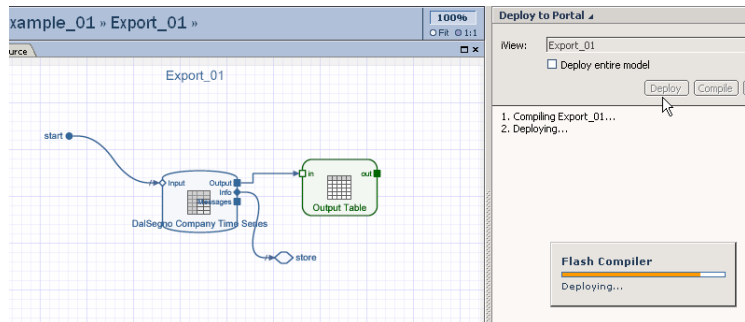


- Choose OK.

**NOTE:** This will export the default view of the data service to a PDF File. It will not keep filters or navigation states.



5. Deploy your model.



6. Run your iView and choose “Export to PDF”.

NOTE: We built this to show the export dialog. You can turn this off if you don't want the dialog by removing that command from the Web Design API command.

Calendar Year Month	Net Sales	Billed Quantity
200301	\$ 249,488	72,435 ST
200302	\$ 243,739	70,678 ST
200303	\$ 246,018	71,413 ST
200304	\$ 245,403	71,243 ST
200305	\$ 240,613	69,832 ST
200306	\$ 243,519	70,636 ST
200307	\$ 244,870	70,965 ST
200308	\$ 239,553	69,537 ST
200309	\$ 245,955	71,475 ST
200310	\$ 240,252	69,693 ST
200311	\$ 245,817	56,429 ST

7. Look at your PDF File.

**Static Filters**

- Product: #
- Product Group: #
- Distribution Channel: !Initial

**Dynamic Filters**

None

**Variables**

None

Calendar Year/Month	Net Sales	Billed Quantity	Sales Plan	Billed Quantity Plan
01.2003	249.488	72.435	240.206	69.511
02.2003	243.739	70.678	242.337	70.309
03.2003	246.018	71.413	246.929	71.475
04.2003	245.403	71.243	237.836	68.930
05.2003	240.613	69.832	233.671	67.813
06.2003	243.519	70.636	244.270	70.855
07.2003	244.870	70.965	245.154	70.995
08.2003	239.553	69.537	235.111	68.156
09.2003	245.955	71.475	230.702	66.916

## 4.5 Mapping External BI Locations

The previous solutions were based on calling the default web analyzer and using a Web Design API command. Because of this, those solutions required that the BI-JAVA and Visual Composer components are on the same server. If your BI-JAVA and Visual Composer are on separate AS-JAVA components, you will need to map a Remote URL iView of your BI-JAVA system Web Analyzer if it is different than the Visual Composer system. This Remote URL iView will need to be setup differently in your Development, QA, and Production environments to point to the respective BEx Web Analyzers. Once this is setup, you can use the PCD location of this Remote URL BEx Web Analyzer within your Visual Composer model. As you transport your iView through your landscape, this Visual Composer application will continue to operate properly as the Remote URL iView in each system points to the respective BI-JAVA system.



<http://www.sdn.sap.com/irj/sdn/howtoguides>