

How to Display Dtree in Portal



Applies to:

SAP NetWeaver 2004s (EP7). For more information, visit the [Java homepage](#).

Summary

This article is for displaying D-Tree in Portal commonly used in JavaScript. This is useful when you want to provide an alternate view of the KM Navigation to the user with customised icons and navigation.

Author: Subhabrata Mukhuti

Company: Tata Consultancy Services Ltd. (TCS)

Created on: 14 September 2009

Author Bio



Subhabrata Mukhuti is working on SAP Netweaver Platform since 2006 (SAP Netweaver 2004s - Portal & KMC). He is working with TCS since 2004.

Table of Contents

Problem Description	3
Solution Details	3
Getting Started	3
Examine the imported component	4
Additional Information	5
Import Missing JARS.....	5
Compile and Deploy	6
Run the Program.....	6
Create a Portal Application iView.....	6
Run the Application.....	7
Related Content.....	8
Disclaimer and Liability Notice.....	9

Problem Description

SAP provides by default a large number of layout sets for changing the appearance of the KM Repository like the *AdminExplorer*, *TreeView*, etc. This article will be useful in the scenarios:

- You may sometime want to provide a flashy alternative to the out-of-box Layout sets for some special folder where appearance is of more importance over other factors.
- In other cases like when you want to present the user with a virtual navigation not mimicking that of the KM folder structure.
- To represent the content of a folder hierarchy set according to some organisation structure.

Solution Details

This article describes a short and easy way to display D-Tree in SAP Enterprise Portal. The sample code provided along with this article deals with hard-coded values and Horizontal Tree, but once the basic concept of this article and the code provided is understood, the code used in this article can be modified and adapted to more complex factions like reading the structure of the D-Tree from a database and displaying the structure; dynamically reading folder structure from KM using KM API's and display using this code; reading the structure of the D-Tree from a xml file and displaying the structure etc.

Please follow the below mentioned steps to accomplish the task –

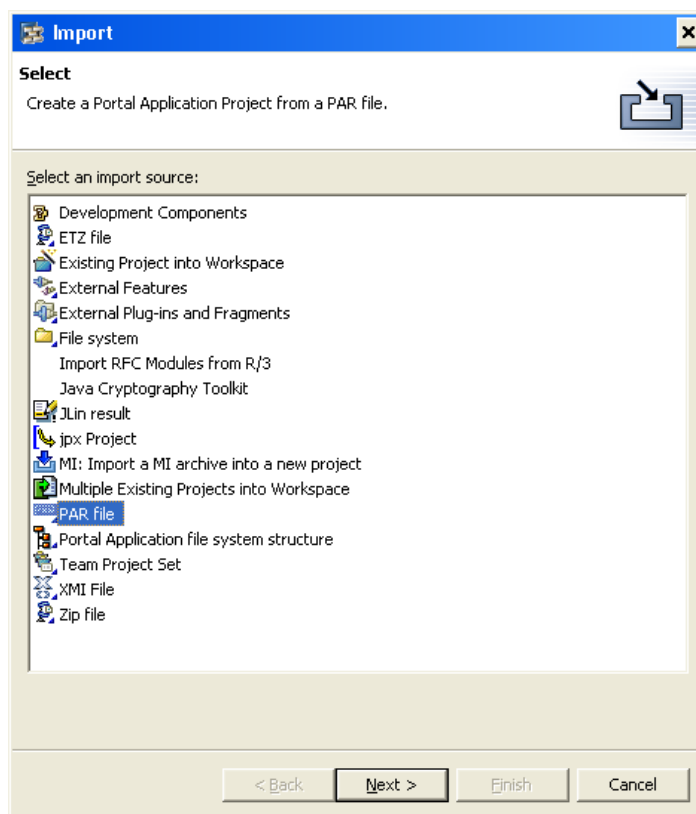
Getting Started

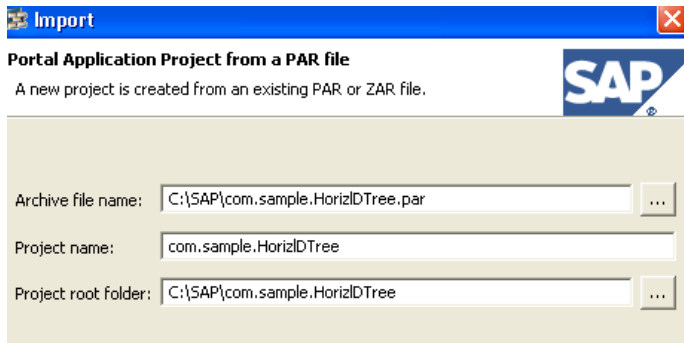
Launch Netweaver developer studio, and open EP perspective.

[Download the zipped PAR File.](#)

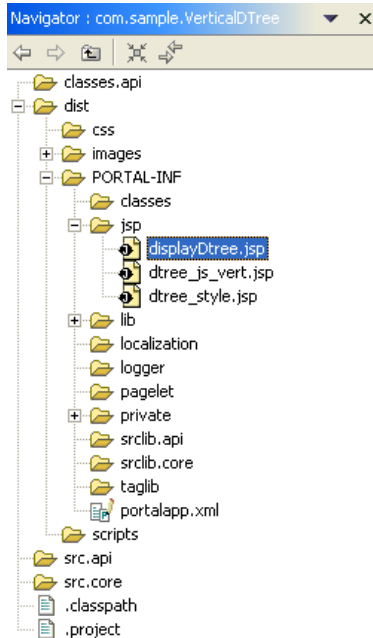
Extract the zipped file using WinZip or any other tool.

Import the PAR file into your workspace, and give project name as *com.sample.HorizIDTree*.





Examine the imported component



If you examine the *com.sample.HorizDTree* component, you can see that the images are kept under */dist/images/* folder and the jsp's used to render the D-Tree is under */dist/PORTAL-INF/jsp/* folder. There are 3 files under this folder:-

1. *displayDTree.jsp* for displaying the D-Tree.
2. *dtree_js_horiz.jsp* provides the JavaScript functions required for the components.
3. *dtree_style.jsp* provides the style-sheet for display.

Note: You can copy the content of the *dtree_style.jsp* file within `<style>` and `</style>` into a css file and keep within the */dist/css/* folder if you want and change the corresponding import in the *dtree_js_vert.jsp* and *displayDTree.jsp* files.

Additional Information

The following statement in the Javascript section of displayDTree.jsp adds node to the Horizontal DTree

```
foldertree.add(<%=nodeList.get(index).toString()%>,<%=parentList.get(index).toString()
%>,'<%=nameList.get(index).toString()%>', '/irj/go/km/docs<%=pathList.get(index).toSt
ring()%>', '<%=nameList.get(index).toString()%>', '', '');
```

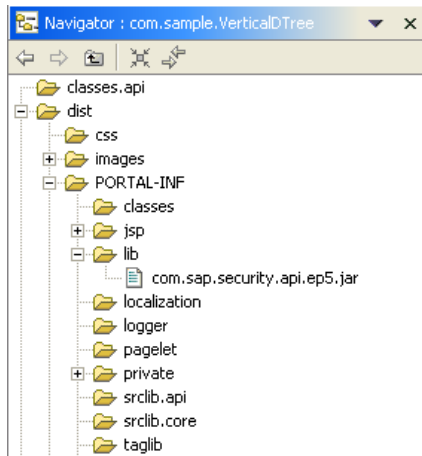
The syntax here is

```
<Treename>.add(folderid,parentfolderid,kmlinkedurl,title,icon,iconOpen)
```

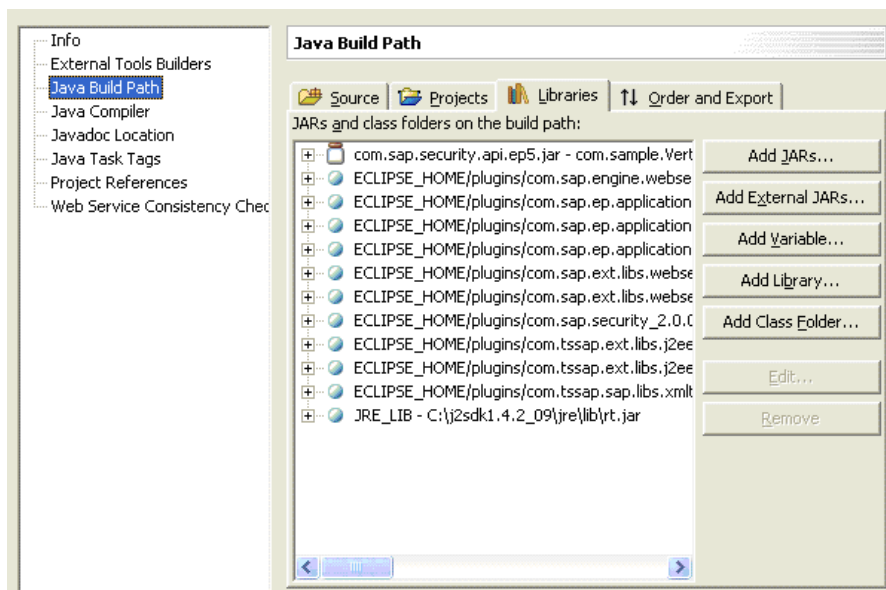
Except the first four parameter, rest has a default value defined and need not be populated. Refer to the function *Node* within dtree_js.jsp for understanding and customizing how this can be adapted to you requirement.

Import Missing JARS

Now, copy and paste the following JAR Files into your lib folder as shown:-



Right Click the com.sample.HorizIDTree project from your navigator and choose “**Properties**”. Go to “**Java Build Path**” and add the newly copied JAR(S) in your build as shown.

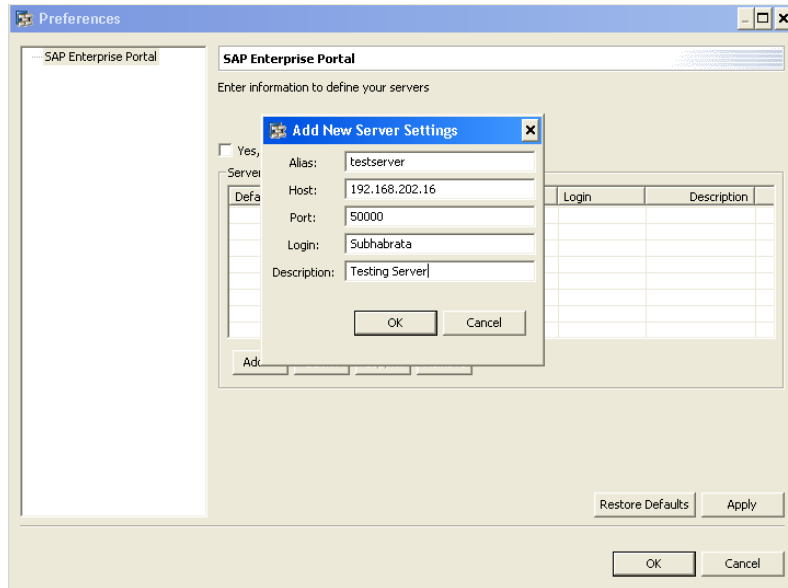


Compile and Deploy

Save the changes and re-compile your project (Project -> Rebuild Project).

Right Click the WorkflowPropagation project from your navigator and choose “**Quick PAR Upload**”

If you check “**Deploy PAR**”, it will ask you to “**Configure Server Settings**” if it is not already done.



Apply Your Changes and click **OK** and **Finish**.

You can then proceed with deploying your application.

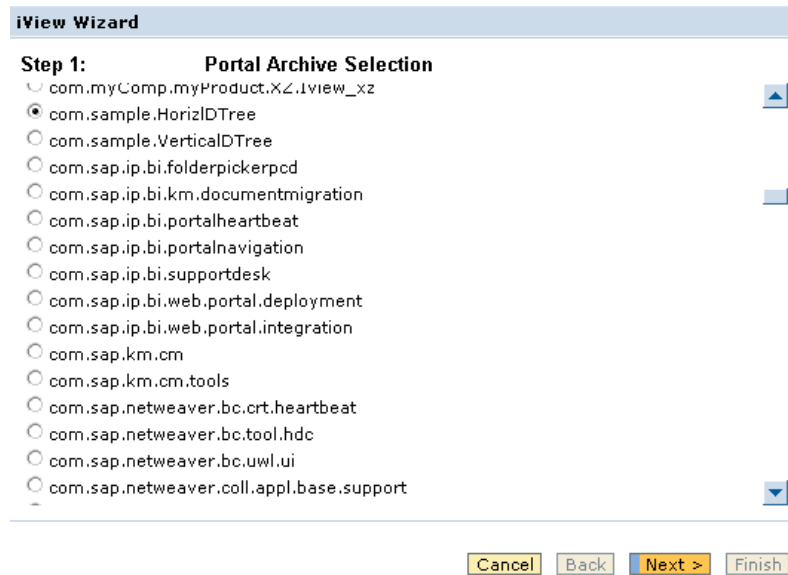
Run the Program

Create a Portal Application iView

Once you successfully accomplished the above steps, launch portal, go to content administrator -> portal content and create an iView from “Portal component”.

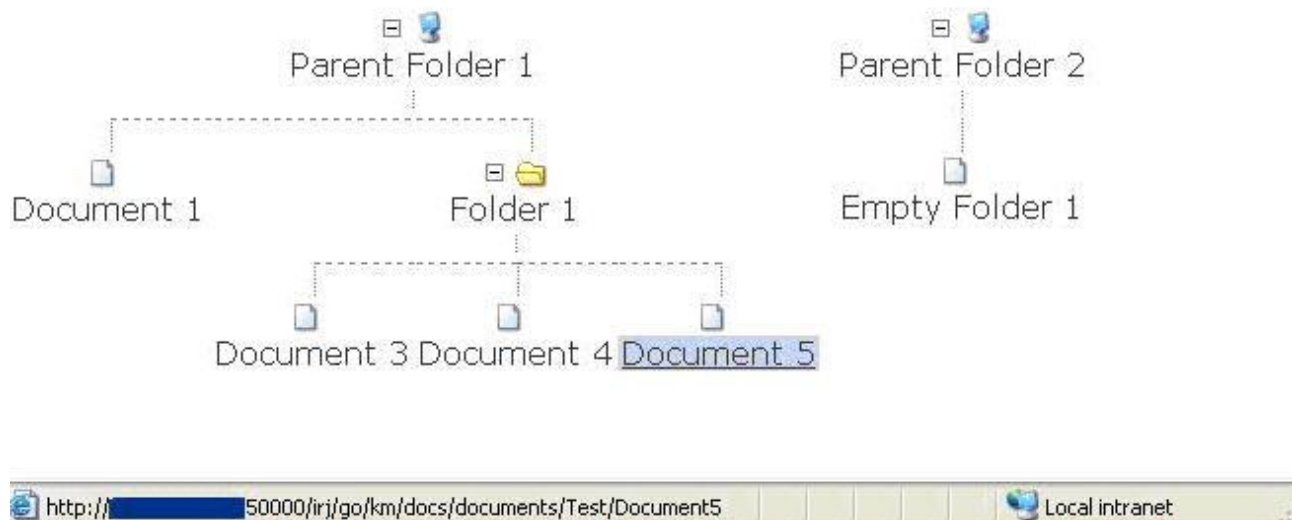
- iView template - create an iView from an existing iView template
- Portal component - create an iView from a portal component contained in a deployed portal archive (P)
- Web Dynpro Java application - Create iViews from deployed Web Dynpro Java applications

Now, Select component **com.sample.HorizIDTree**, Portal Component **display_HorizontalDTree** and enter a suitable name, id and **Save**.



Run the Application

All you have got to do now is to right-click the above iView and run it by 'Previewing'.



Related Content

Related zipped PAR File: [click here](#) to download.

For more information, visit the [Portal and Collaboration homepage](#).

<https://www.sdn.sap.com>

<http://help.sap.com>

[Flexible JavaScript Tree Menu: dTree](#)

Disclaimer and Liability Notice

This document may discuss sample coding or other information that does not include SAP official interfaces and therefore is not supported by SAP. Changes made based on this information are not supported and can be overwritten during an upgrade.

SAP will not be held liable for any damages caused by using or misusing the information, code or methods suggested in this document, and anyone using these methods does so at his/her own risk.

SAP offers no guarantees and assumes no responsibility or liability of any type with respect to the content of this technical article or code sample, including any liability resulting from incompatibility between the content within this document and the materials and services offered by SAP. You agree that you will not hold, or seek to hold, SAP responsible or liable with respect to the content of this document.