

# Historization in SAP BW



## Applies to:

Software Component: SAP\_BW. For more information, visit the [EDW homepage](#).

Release: 700

## Summary

This article is intended to serve as a guideline for improving data load and query performance for most recent data in the cube by moving older data into history cubes and putting current data cube on BIA.

**Author:** Pritam Dutta

**Company:** Infosys Technologies Ltd

**Created on:** 12th September 2010

## Author Bio



NAME – Pritam Dutta

Company Name – Infosys Technologies LTD

Role - Consulting

## Table of Contents

Introduction .....	3
Objective .....	3
Activities .....	3
Activities to be performed .....	4
Exceptional scenarios and some points to note .....	6
Related Content.....	7

## **Introduction**

### **Objective**

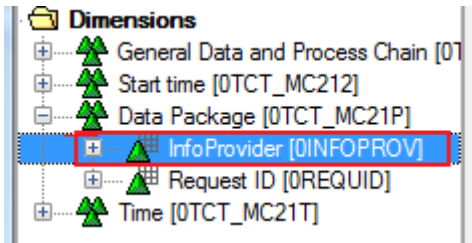
- Keep the Current Cube lean & healthy by moving the Older Data (older data definition could be company/requirement specific, but generally could be between 3-5 Years) to History Cube thereby increasing the Query Performance and Data Load Performance and also reducing the BIA Index memory.

### **Activities**

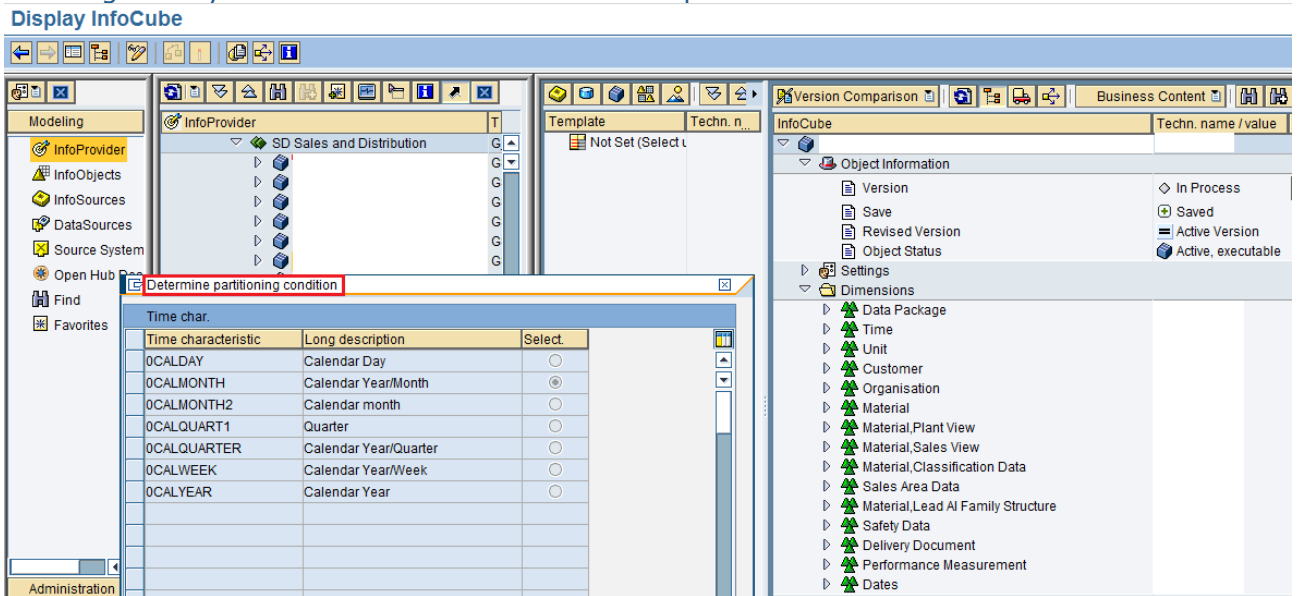
- Identify Cube Candidates for Historization as per definition
- Implement Historization Process for identified Candidates
  - Development of New History Cubes, Multiprovider Changes, Update Rules, Pre/Post Query Snapshot for Testing
  - Cut Over, Data Load in Production, BIA Index

## Activities to be performed

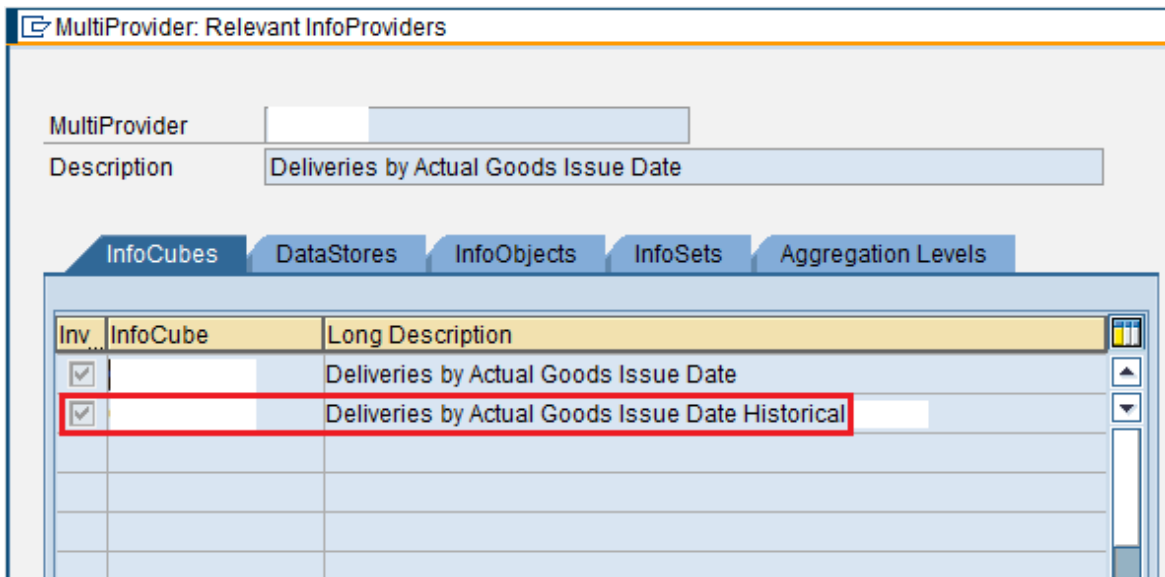
- ✚ Analysis of Cubes for being part of this exercise as per definition
- ✚ Analysis of Query for 0INFOPROVIDER restrictions



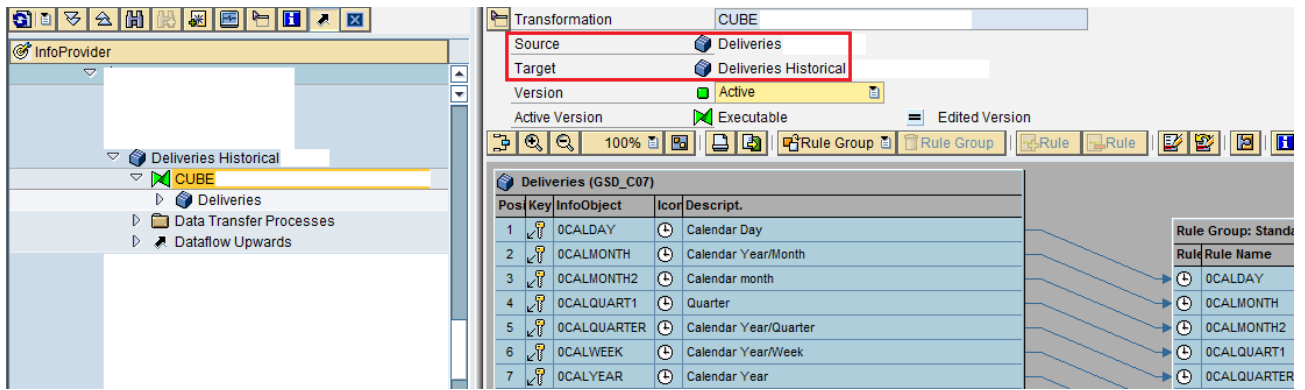
- ✚ Creating History Cubes with Partition details as required



- ✚ Appending Multiprovider to include History Cubes



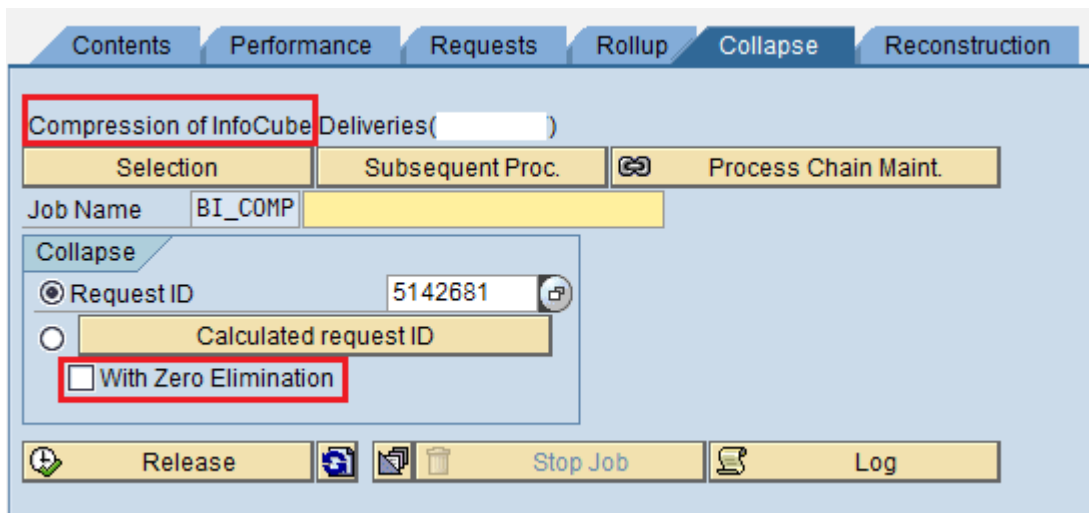
✦ Creation of Transformation/Update Rules from Current Cube to History Cube



- ✦ Based on Query analysis of 0INFOPROV, Query modifications to be done, if any.
- ✦ Snapshot of Reports should be kept before Changes are done.
- ✦ Data to be loaded from Current Cube to History Cube

Request ID	R	C	C	D	R	Re	Loa	DTP/InfoPacka	Request D.	Update Date	Selection Conditions	Transferred	Added Rec.	Type of Data Update	Source/InfoSource	Name of Source
3129045						CC			10.09.2009	10.09.2009	CALYEAR=2006-2006;	2761166	2761166	Full update	CUBE	InfoProvider
1663067						CC			13.08.2008	13.08.2008	CALYEAR=1995-2005;	2640803	2640803	Full update	CUBE	InfoProvider

- ✦ To delete the Aggregates, if there is any
- ✦ The Data which is put in History Cube needs to be deleted from Current Cube
- ✦ Performance improvements like Compression/Zero Elimination etc could be done in Current Cube



- ✦ Indexes / Statistics could be generated
- ✦ After the above changes are done Post snapshot should be taken and compared to pre snap-shot of reports to ensure data matches
- ✦ All the above steps should be done in development system of transport landscape and then transported to Integration testing, User Testing & Production systems.

## Exceptional scenarios and some points to note

- ❖ There might be scenarios where more than one multicube might be required.
- ❖ Scenarios where MultiCube doesn't exist, efforts are required to create Multi Cube, move queries to MultiCube, Adjust authorization set-up.
- ❖ Scenarios where Cube is a Source for another Target, Delta management needs proper analysis.
- ❖ Among queries currently on Basic cubes, Need to be analyzed and properly moved to (recreated on) MultiCubes. Dashboards, Workbooks etc need to be analyzed.
- ❖ Naming convention for History cubes need to be properly managed with good governance for proper sustainability.
- ❖ To analyze benefits, statistics should be collected for
  - records in Main cube
  - space occupied in DataBase
  - Space occupied in BWA

## Related Content

For more information, visit the [EDW homepage](#)

## Disclaimer and Liability Notice

This document may discuss sample coding or other information that does not include SAP official interfaces and therefore is not supported by SAP. Changes made based on this information are not supported and can be overwritten during an upgrade.

SAP will not be held liable for any damages caused by using or misusing the information, code or methods suggested in this document, and anyone using these methods does so at his/her own risk.

SAP offers no guarantees and assumes no responsibility or liability of any type with respect to the content of this technical article or code sample, including any liability resulting from incompatibility between the content within this document and the materials and services offered by SAP. You agree that you will not hold, or seek to hold, SAP responsible or liable with respect to the content of this document.