

From Visual Administrator
to
SAP NetWeaver Administrator
SAP Enhancement Package 1 for SAP
NetWeaver CE 7.1



The rampdown of Visual Administrator with SAP NetWeaver AS Java 7.10 affects many working areas. E.g.:

- Customer administrator and operators (daily use)
- Tech support
- Developer
- Quality Assurance engineers
- Info-developer...

Therefore we want to give a short intro about SAP NetWeaver Administrator, because this will be the main entry point to execute tasks formerly done in Visual Administrator .

- Rampdown of Visual Administrator is done with AS Java 7.10
Visual Administrator is no longer part of SAP NetWeaver shipment!
- All necessary online functionalities are transferred to SAP NetWeaver Administrator.

SAP NetWeaver Administrator

- Administrative tool focused on the local Application Server Java
- No installation / runs out of the box
- Replacement of Visual Administrator
- Former Visual Administrator tasks will be done in SAP NetWeaver Administrator beginning with shipment of products base on AS Java 7.10

Welcome to SAP NetWeaver Administrator



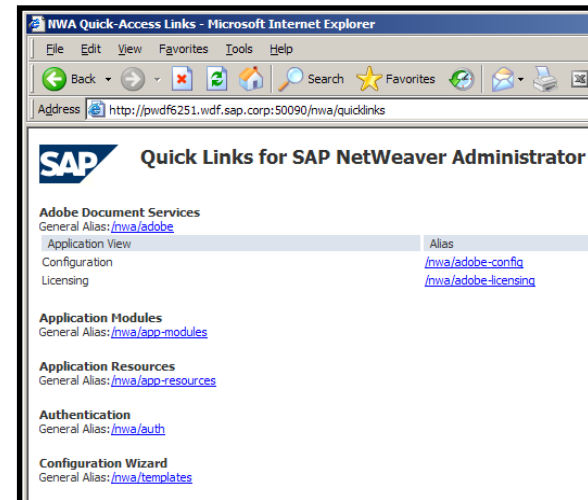
SAP NetWeaver Administrator is the new, Java and browser-based administration and monitoring solution for your SAP NetWeaver AS Java based system.



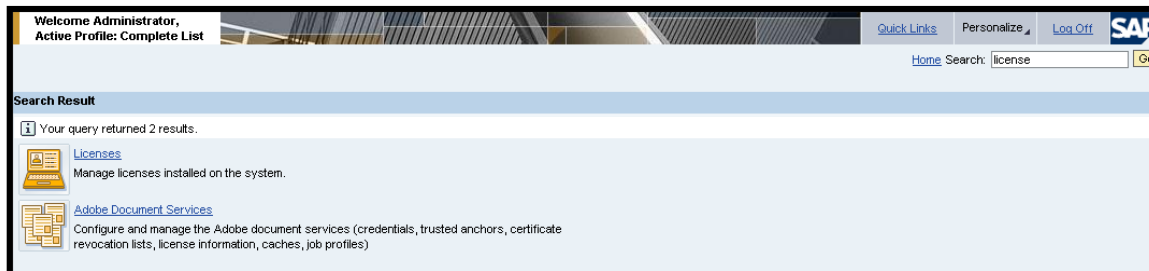
To start it, call: <http://<host>:<port>/nwa>

To navigate, call the Quick Links Page, which gives you direct access to all main functionalities:

<http://<host>:<port>/nwa/quicklinks>



Use the search feature to easily find all functions.



Replacement of Visual Administrator

Former functions of Visual Administrator are fully integrated in SAP NetWeaver Administrator

- No release or support pack dependencies any longer
- Quick links guide you directly to the needed function
- Use the search feature to easily find all functions



The screenshot displays the SAP NetWeaver Administrator interface, specifically the Configuration Management section. The navigation bar at the top includes: Availability and Performance Management, Operation Management, Configuration Management (active), Problem Management, and SOA Management. The main content area is divided into two columns of configuration options, each with an icon and a brief description:

- Adobe Document Services:** Configure and manage the Adobe document services (credentials, trusted anchors, certificate revocation lists, license information, caches, job profiles).
- Application Resources:** The Application Resources plug-in provides functionality to create, manage and delete external resources such as JDBC drivers, JDBC data sources, resource adapters, connection factories and others. The administrator can view all resources or choose a specific resource type and select a resource from the resources list. He can view its details and the details of all antecedent and dependent resources.
- Destinations:** Applications or services can establish connections to other services. When using such connections, you need to specify the remote service's address and the user authentication information to use for the connection. Many applications use the Destination service for this purpose.
- Internationalization:** Languages and Time Zones references.
- JCo RFC Provider:** The JCo RFC Provider Service processes ABAP to Java requests, and dispatches the calls to Java applications. So, seen from an ABAP system, it provides an RFC destination. Technically, the service is based on the JCo (SAP Java Connector). In order to receive calls from ABAP, JCo Servers are started and registered at the gateways of the ABAP systems. The configuration of these JCo servers is done here.
- Licenses:** Manage licenses installed on the system.
- Message Server:** The Message Server plug-in provides functionality for inspecting the Message Server parameters and settings.
- Session Management:** The Session Management provide management and monitoring of session data in the server including Security Sessions, Http Sessions and stateful ejb objects.
- System Info:** System Information provides administrators with an overview of the system configuration. It shows all of the system's instances and their important parameters (such as ports) that may be required for support cases, as well as the versions of the components installed.
- Trusted Systems:** You can use the trusted systems configuration in order to maintain the relationship between issuing and accepting systems.
- Application Modules:** This is a solution that contains details of the deployed applications as well as several types of modules (e.g. -Web and EJB modules) where configuration settings can be viewed and altered.
- Java Configuration Browser:** Such a browser offers a detailed view of the configuration settings on the selected Java systems with all the property sheets and source files. This is an informative view only. To change the configuration of a system use the configuration editor view of the local configuration tool.
- Java HTTP Provider Configuration:** Virtual Host can act as several different Web servers responding to different URLs, but referring only to a single real IP address. A user can gain flexibility by providing different configuration settings for each of the virtual hosts that can be both created and configured. Logon load balancing increases the efficiency of various workgroups. To improve performance and system resource consumption users are distributed across available application servers based on the requirements of workgroup service and load sensitivity.
- Java Class Loader Viewer:** You can use the Java Class Loader Viewer to view the information the Application Server Java provides about the class loaders currently available and to diagnose problems on a technical level. For each Class Loader the viewer displays: name, parent, references, references and resources (JAR files, directories with class files and resources, and so on). You can search for a specific class loader based on its component type (application, common, interface, library, service) or using part of its name.
- JMS Server Configuration:** Configure the JMS server.
- Log Configuration:** The Log Configuration plug-in provides functionality for inspecting the log configuration, changing the severity of log controllers and resetting the current log configuration to the default one.
- Services Registry Management:** Manage the UDDI Server and the Services Registry configuration settings (e.g. security, publishing, replication, optimization).
- SLD Data Supplier Configuration:** The SLD Data Supplier service registers the Application Server Java in the System Landscape Directory (SLD) and provides access to SLD for other Java EE applications.
- Java System Properties:** Important configuration data of the selected systems such as VM settings and services configuration is contained here. A small number of properties are online modifiable. To change the rest of the properties, use the local configuration tool.

Main administration will be done in SAP NetWeaver Administrator

Main Visual Administrator functionality can be found here:

- Configuration Management -> Infrastructure Management
- Problem Management -> Logs and Traces
- Configuration Management -> Security

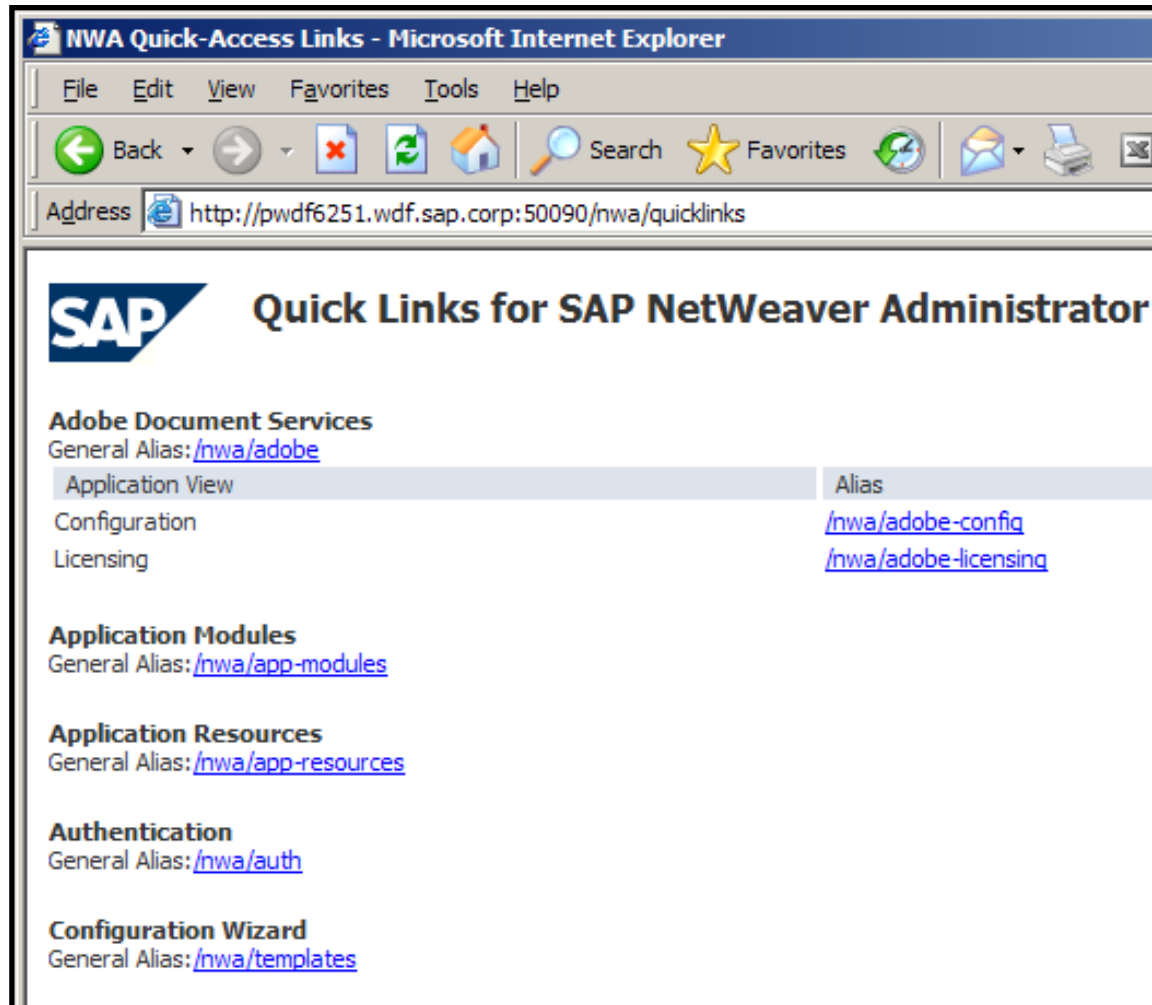
⇒ task oriented navigation

Quick links will guide you directly to most of the functionalities

- <http://<host>:<port>/nwa/quicklinks>

Use the search feature to easily find all functions

<http://<host>:<port>/nwa/quicklinks>



The screenshot shows a Microsoft Internet Explorer browser window titled "NWA Quick-Access Links - Microsoft Internet Explorer". The address bar displays the URL <http://pwwf6251.wdf.sap.corp:50090/nwa/quicklinks>. The main content area features the SAP logo and the heading "Quick Links for SAP NetWeaver Administrator". Below this, there are several sections:

- Adobe Document Services**
General Alias: [/nwa/adobe](#)
A table with two columns: "Application View" and "Alias".

Application View	Alias
Configuration	/nwa/adobe-config
Licensing	/nwa/adobe-licensing
- Application Modules**
General Alias: [/nwa/app-modules](#)
- Application Resources**
General Alias: [/nwa/app-resources](#)
- Authentication**
General Alias: [/nwa/auth](#)
- Configuration Wizard**
General Alias: [/nwa/templates](#)



http://<host>:<port>/nwa

Welcome Administrator,
Active Profile: Complete List

[Quick Links](#)

Personalize ▾


[Log Off](#)



[Home](#) Search

Go

Search Result

 Your query returned 2 results.



[Licenses](#)

Manage licenses installed on the system.



[Adobe Document Services](#)

Configure and manage the Adobe document services (credentials, trusted anchors, certificate revocation lists, license information, caches, job profiles)

Where to find the right place in SAP NetWeaver Administrator?

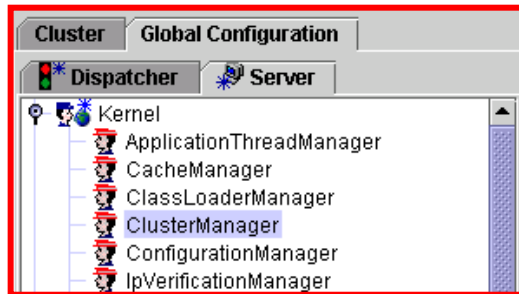
You are interested in service configuration

- You go to the generic system properties page `/nwa/sys-config`
- If there is a special function for the service, you can check the quick links page or do a search. For example search for “jco” to find the *JCo RFC Provider* service.

You are interested in changing a parameter

- If the parameter can be changed during runtime, it can be done out of generic system properties page `/nwa/sys-config` or via a special function.
- Most of the parameters cannot be changed during runtime. In this case, please use the ConfigTool

Locating Visual Administrator Functions in SAP NetWeaver Administrator



Key	Value
barrier.dependent	false
barrier.shutdown	none
barrier.startup	none
barrier.timeout	10000
element.clusterId	4001

OLD

Properties tab implies that these properties are displayed in Java System Properties of SAP NetWeaver Administrator. In the new release only a few application parameter settings can be changed online.

Java System Properties: Overview

Home History Back Forward Help Log Off

Related Links

Templates

- CE_Composition_Environment_production_full
- CE_Complete_Stack_production_full
 - ID30435

Details

Kernel Services Applications VM Environment Memory VM Parameters System VM Parameters Additional VM Parameters

Name

- ApplicationThreadManager
- CacheManager
- ClassLoaderManager
- ClusterManager
- ConfigurationManager

Extended Details

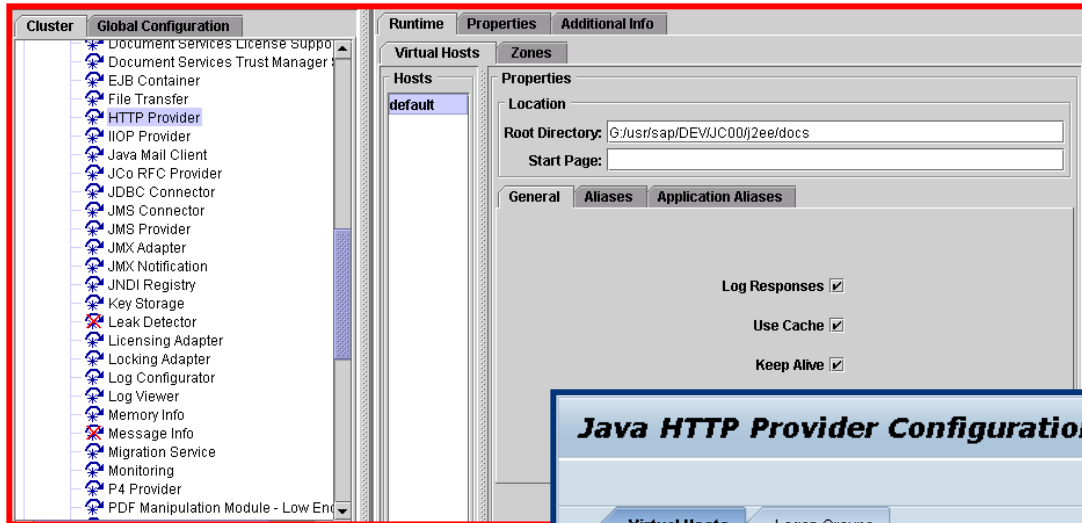
Properties

Show Details

Name	Default Value	Modifiable	Custom Value
barrier.dependent	false	<input type="checkbox"/>	
barrier.shutdown	none	<input type="checkbox"/>	
barrier.startup	none	<input type="checkbox"/>	
barrier.timeout	10000	<input type="checkbox"/>	
element.clusterId	\${INSTANCE_ID}50 + \${NODE_INDEX}	<input type="checkbox"/>	

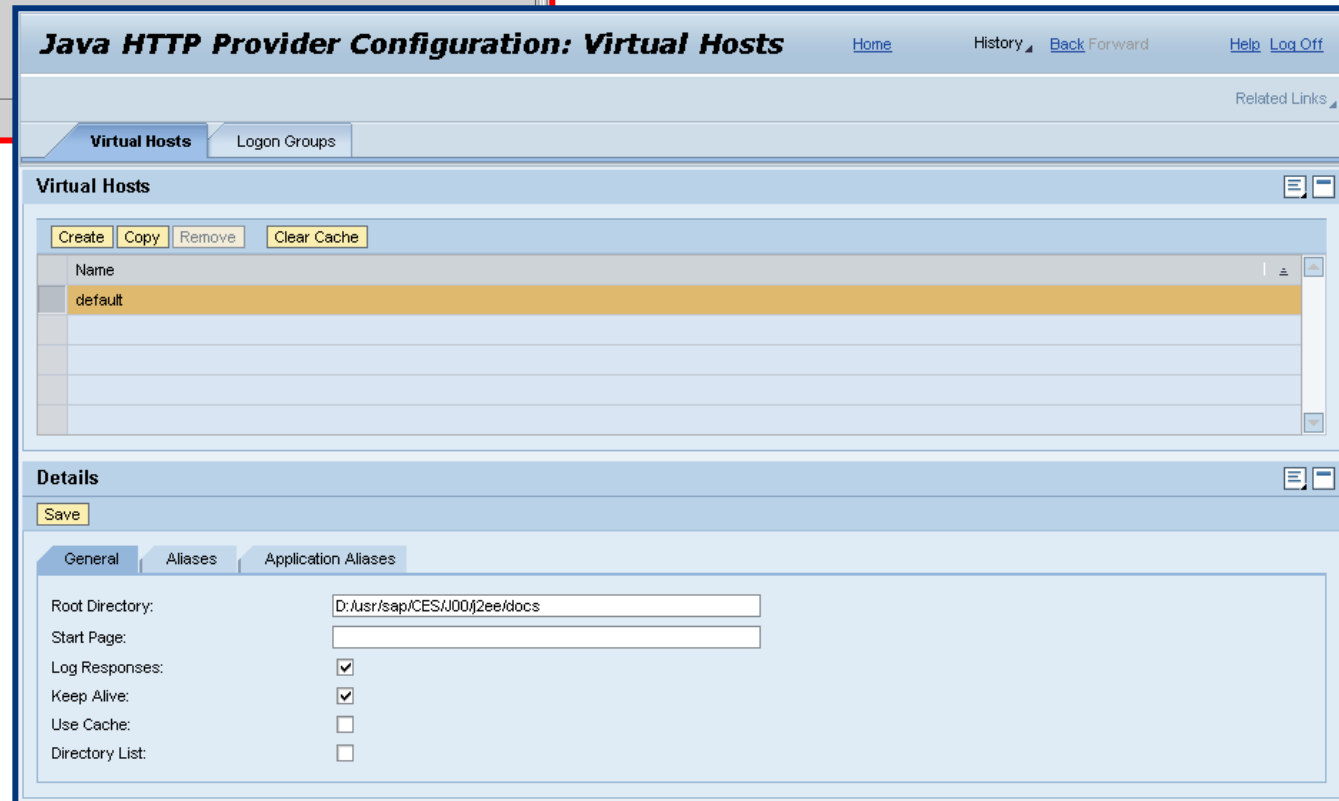
NEW

Locating Visual Administrator Functions in SAP NetWeaver Administrator



A *Runtime* tab in Visual Administrator was replaced by a special „function“ in SAP NetWeaver Administrator. Some of those settings can be changed online without restart.

OLD



NEW

Former VA Service	Quick Links nwa/quicklinks
Connector Container JDBC Connector JMS Connector	/nwa/app-resources
EJB Container Web Container	/nwa/app-modules
HTTP Provider	/nwa/http /nwa/logon-groups /nwa/virtual-hosts
JMS Provider	/nwa/jms
SLD Data Supplier	/nwa/sld-config
Licensing Adapter	/nwa/licenses
Destinations	/nwa/destinations
Jco RFC Provider	/nwa/jco-destinations

Locking Adapter	/nwa/locks
Log Configurator	/nwa/log-config
Log Viewer	/nwa/logs
Monitoring	/nwa/java-sys-reports

More quick links are available , just check

<http://<host>:<port>/nwa/quicklinks>

→ SAP

<http://help.sap.com>

SAP NetWeaver ⇨ SAP NetWeaver CE

<http://partnerwithsap.com>

→ SDN

<http://sdn.sap.com/>

Forums ⇨ SAP NetWeaver ⇨ SAP NetWeaver Administrator



No part of this publication may be reproduced or transmitted in any form or for any purpose without the express permission of SAP AG. The information contained herein may be changed without prior notice.

Some software products marketed by SAP AG and its distributors contain proprietary software components of other software vendors.

SAP, R/3, mySAP, mySAP.com, xApps, xApp, SAP NetWeaver, Duet, Business ByDesign, ByDesign, PartnerEdge and other SAP products and services mentioned herein as well as their respective logos are trademarks or registered trademarks of SAP AG in Germany and in several other countries all over the world. All other product and service names mentioned and associated logos displayed are the trademarks of their respective companies. Data contained in this document serves informational purposes only. National product specifications may vary.

The information in this document is proprietary to SAP. This document is a preliminary version and not subject to your license agreement or any other agreement with SAP. This document contains only intended strategies, developments, and functionalities of the SAP® product and is not intended to be binding upon SAP to any particular course of business, product strategy, and/or development. SAP assumes no responsibility for errors or omissions in this document. SAP does not warrant the accuracy or completeness of the information, text, graphics, links, or other items contained within this material. This document is provided without a warranty of any kind, either express or implied, including but not limited to the implied warranties of merchantability, fitness for a particular purpose, or non-infringement.

SAP shall have no liability for damages of any kind including without limitation direct, special, indirect, or consequential damages that may result from the use of these materials. This limitation shall not apply in cases of intent or gross negligence.

The statutory liability for personal injury and defective products is not affected. SAP has no control over the information that you may access through the use of hot links contained in these materials and does not endorse your use of third-party Web pages nor provide any warranty whatsoever relating to third-party Web pages

Weitergabe und Vervielfältigung dieser Publikation oder von Teilen daraus sind, zu welchem Zweck und in welcher Form auch immer, ohne die ausdrückliche schriftliche Genehmigung durch SAP AG nicht gestattet. In dieser Publikation enthaltene Informationen können ohne vorherige Ankündigung geändert werden.

Einige von der SAP AG und deren Vertriebspartnern vertriebene Softwareprodukte können Softwarekomponenten umfassen, die Eigentum anderer Softwarehersteller sind.

SAP, R/3, mySAP, mySAP.com, xApps, xApp, SAP NetWeaver, Duet, Business ByDesign, ByDesign, PartnerEdge und andere in diesem Dokument erwähnte SAP-Produkte und Services sowie die dazugehörigen Logos sind Marken oder eingetragene Marken der SAP AG in Deutschland und in mehreren anderen Ländern weltweit. Alle anderen in diesem Dokument erwähnten Namen von Produkten und Services sowie die damit verbundenen Firmenlogos sind Marken der jeweiligen Unternehmen. Die Angaben im Text sind unverbindlich und dienen lediglich zu Informationszwecken. Produkte können länderspezifische Unterschiede aufweisen.

Die in diesem Dokument enthaltenen Informationen sind Eigentum von SAP. Dieses Dokument ist eine Vorabversion und unterliegt nicht Ihrer Lizenzvereinbarung oder einer anderen Vereinbarung mit SAP. Dieses Dokument enthält nur vorgesehene Strategien, Entwicklungen und Funktionen des SAP®-Produkts und ist für SAP nicht bindend, einen bestimmten Geschäftsweg, eine Produktstrategie bzw. -entwicklung einzuschlagen. SAP übernimmt keine Verantwortung für Fehler oder Auslassungen in diesen Materialien. SAP garantiert nicht die Richtigkeit oder Vollständigkeit der Informationen, Texte, Grafiken, Links oder anderer in diesen Materialien enthaltenen Elemente. Diese Publikation wird ohne jegliche Gewähr, weder ausdrücklich noch stillschweigend, bereitgestellt. Dies gilt u. a., aber nicht ausschließlich, hinsichtlich der Gewährleistung der Marktgängigkeit und der Eignung für einen bestimmten Zweck sowie für die Gewährleistung der Nichtverletzung geltenden Rechts.

SAP übernimmt keine Haftung für Schäden jeglicher Art, einschließlich und ohne Einschränkung für direkte, spezielle, indirekte oder Folgeschäden im Zusammenhang mit der Verwendung dieser Unterlagen. Diese Einschränkung gilt nicht bei Vorsatz oder grober Fahrlässigkeit.

Die gesetzliche Haftung bei Personenschäden oder die Produkthaftung bleibt unberührt. Die Informationen, auf die Sie möglicherweise über die in diesem Material enthaltenen Hotlinks zugreifen, unterliegen nicht dem Einfluss von SAP, und SAP unterstützt nicht die Nutzung von Internetseiten Dritter durch Sie und gibt keinerlei Gewährleistungen oder Zusagen über Internetseiten Dritter ab.

Alle Rechte vorbehalten.