

**SAP Overall Equipment
Effectiveness Management
How-To Guide**



How to Set Up and Use the SAP OEE Customer Extension Feature

Applicable Release: OEE 1.0 SP01

Version 1.0

October 25, 2013

SAP OEE How-To-Guide for Customer Extensions

© Copyright 2013 SAP AG. All rights reserved.

No part of this publication may be reproduced or transmitted in any form or for any purpose without the express permission of SAP AG. The information contained herein may be changed without prior notice.

Some software products marketed by SAP AG and its distributors contain proprietary software components of other software vendors.

Microsoft, Windows, Outlook, and PowerPoint are registered trademarks of Microsoft Corporation.

IBM, DB2, DB2 Universal Database, OS/2, Parallel Sysplex, MVS/ESA, AIX, S/390, AS/400, OS/390, OS/400, iSeries, pSeries, xSeries, zSeries, z/OS, AFP, Intelligent Miner, WebSphere, Netfinity, Tivoli, Informix, i5/OS, POWER, POWER5, OpenPower and PowerPC are trademarks or registered trademarks of IBM Corporation.

Adobe, the Adobe logo, Acrobat, PostScript, and Reader are either trademarks or registered trademarks of Adobe Systems Incorporated in the United States and/or other countries.

Oracle is a registered trademark of Oracle Corporation.

UNIX, X/Open, OSF/1, and Motif are registered trademarks of the Open Group.

Citrix, ICA, Program Neighborhood, MetaFrame, WinFrame, VideoFrame, and MultiWin are trademarks or registered trademarks of Citrix Systems, Inc.

HTML, XML, XHTML and W3C are trademarks or registered trademarks of W3C®, World Wide Web Consortium, Massachusetts Institute of Technology.

Java is a registered trademark of Sun Microsystems, Inc.

JavaScript is a registered trademark of Sun Microsystems, Inc., used under license for technology invented and implemented by Netscape.

MaxDB is a trademark of MySQL AB, Sweden.

SAP, R/3, mySAP, mySAP.com, xApps, xApp, SAP NetWeaver, and other SAP products and services mentioned herein as well as their respective logos are trademarks or registered trademarks of SAP AG in Germany and in several other countries all over the world. All other product and service names mentioned are the trademarks of their respective companies. Data contained in this document serves informational purposes only. National product specifications may vary.

These materials are subject to change without notice. These materials are provided by SAP AG and its affiliated companies ("SAP Group") for informational purposes only, without representation or warranty of any kind, and SAP Group shall not be liable for errors or omissions with respect to the materials.

The only warranties for SAP Group products and services are those that are set forth in the express warranty statements accompanying such products and services, if any. Nothing herein should be construed as constituting an additional warranty.

These materials are provided "as is" without a warranty of any kind, either express or implied, including but not limited to, the implied warranties of merchantability, fitness for a particular purpose, or non-infringement.

SAP shall not be liable for damages of any kind including without limitation direct, special, indirect, or consequential damages that may result from the use of these materials.

SAP does not warrant the accuracy or completeness of the information, text, graphics, links or other items contained within these materials. SAP has no control over the information that you may access through the use of hot links contained in these materials and does not endorse your use of third party web pages nor provide any warranty whatsoever relating to third party web pages.

SAP OEE "How-to" Guides are intended to simplify the product implementation. While specific product features and procedures typically are explained in a practical business context, it is not implied that those features and procedures are the only approach in solving a specific business problem using SAP OEE. Should you wish to receive additional information, clarification or support, please refer to SAP Consulting.

Document History

Document Version	Description	Author
1.0	Initial version	Jamini Sampathkumar

Table of Contents

1	Introduction.....	1
1.1	Purpose.....	1
1.2	Scope.....	1
1.3	Prerequisite	1
2	Feature Overview.....	1
2.1	Description and Applicability	1
3	Functions.....	1
3.1	Create an SAP MII Transaction.....	1
3.2	Create an SAP OEE Activity	2
3.3	Create SAP OEE Extension	2
4	Integration.....	2
5	Feature Set Up.....	3
6	Other Reference Material.....	4

1 Introduction

1.1 Purpose

The customer extension feature in the SAP OEE MII add-on allows a customer to define custom implementation or logic that must be executed before or after a standard SAP OEE event.

1.2 Scope

This document explains the different points of extension in the SAP OEE MII add-on.

It illustrates an example of an SAP MII transaction that is plugged as an extension to a standard SAP OEE event.

1.3 Prerequisite

SAP OEE is installed and configured.

A basic knowledge of SAP MII is a prerequisite to use this document.

2 Feature Overview

2.1 Description and Applicability

Extensions can be any custom logic or functionality that the customer wants to execute when a standard SAP OEE event occurs.

The extensions can be categorized as:

1. PRE: Extension is executed before the standard SAP OEE event
2. POST: Extension is executed after the standard SAP OEE event
3. EXCEPTION: Extension is executed when an exception occurs upon the standard execution of the SAP OEE event

An extension is defined in an SAP OEE Activity.

Typically, an activity of type *Transaction* is used to define an extension.

3 Functions

3.1 Create an SAP MII Transaction

1. This SAP MII transaction will contain the functionality that you want to implement.

The transaction can use the SAP OEE data. You can refer to the SAP OEE data model to identify the database tables and fields that are relevant to your functionality.

SAP OEE How-To-Guide for Customer Extensions

The transaction can also use the SAP OEE interface that exposes the services as SAP MII custom actions. You can find all the interface methods and the required inputs in the document *SAP OEE Service Interface for PCo Integration.pdf*.

2. After the transaction is created, right click on the transaction in the SAP MII workbench and select *Copy*. This copies the fully qualified path of the transaction.

3.2 Create an SAP OEE Activity

1. Go to the SAP MII menu page. Choose *Worker UI Management -> Activity Configuration*.
2. Choose the *Create Activity* button.
3. Give a unique name in the Activity ID section (Conventionally, capital case and underscore is used).
4. On the *Main* tab, enter the fully qualified path of the transaction that you copied after creating the transaction in the *Class or URL* field.
5. In the *Activity Type* field, choose *Transaction*.
6. On the *Activity Description* tab, choose *Add*. Select an appropriate language and specify a description. This will be the description that you choose in the extension creation.
7. Choose *Save*.

3.3 Create SAP OEE Extension

1. Go to the SAP MII menu page. Choose *Worker UI Management -> General Configuration*.
2. From the hierarchy select a node of type plant. Select the *Extension Configuration* tab. The *Method* section on the top of the screen contains all the SAP OEE events that are exposed. An extension can be applied before an event or after an event or on an exception of these events.
The lower section displays the extensions that are assigned to these events. SAP delivered standard extensions are visible by default.
3. To add an extension on a particular method, select the method and click *Add* on the lower panel. The *Add Extensions Details* dialog box appears.
4. Enter the extension type and activity name. The activity name is the description that you maintained in step 8 of 3.2)
5. Select the *Enabled* option.
6. Do not select the *Asynchronous* option.
7. Choose *Add*. In the *Add Extension Description* dialog box enter a language and description. Choose *Add*.
8. In the *Add Extensions Details* choose *Add* and then choose *Save*.

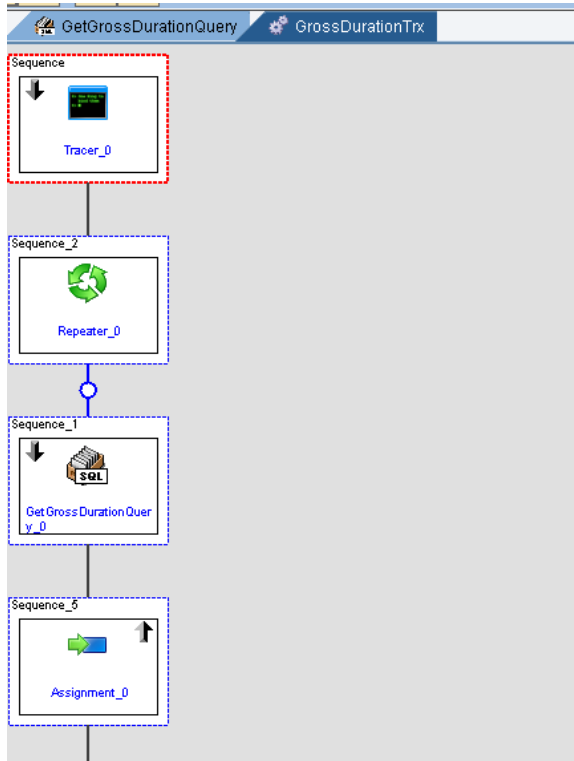
4 Integration

Integration Between SAP MII and OEE

5 Feature Set Up

Example to create an extension that creates a data collection on order completion and populates the gross duration of the order against a standard value called *Machine duration*

1. Create an SAP MII transaction that computes the gross duration from the MPM_PROD_RUN_HDR database table and calls the SAP OEE interface method called *Report formula parameters* with the formula parameter set to machine duration's parameter.



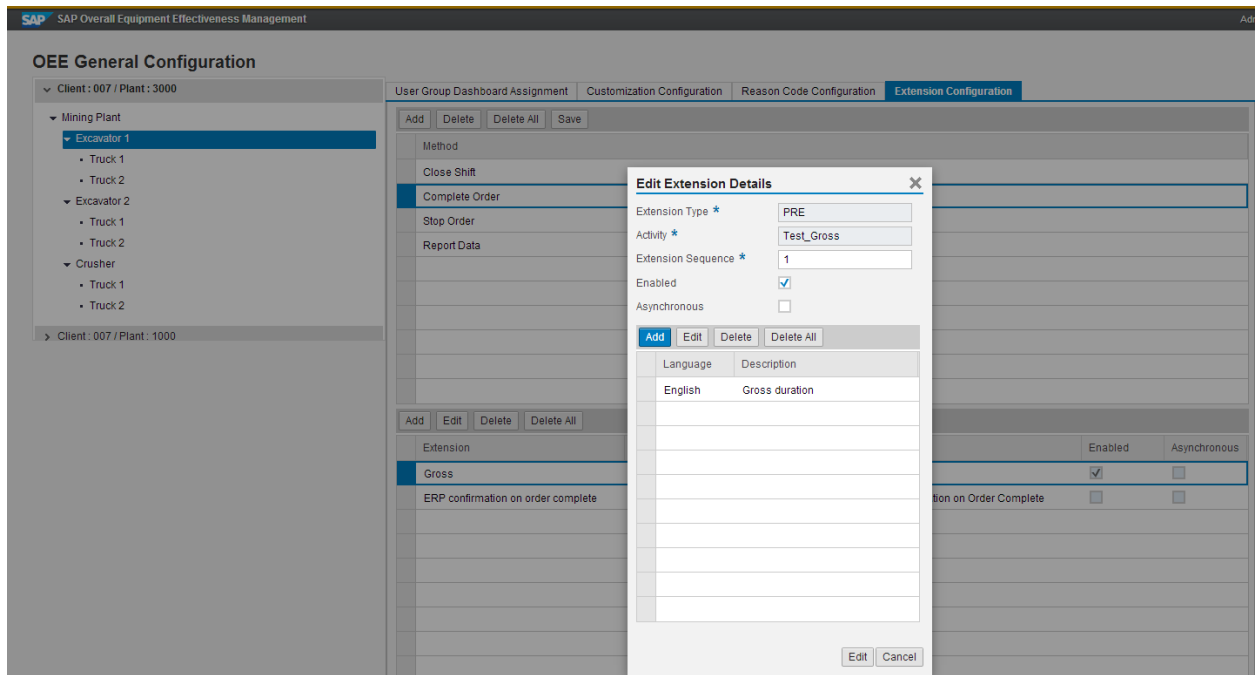
2. Create an SAP OEE activity pointing to this transaction.

The screenshot shows the configuration of an SAP OEE activity. The form includes the following fields:

- Activity ID ***: AC-TEST1
- Main** tab is selected.
- Class or URL ***: Default/GrossDurationTrx
- Activity Type**: Transaction (dropdown menu)
- Options** tab is visible but not selected.
- Back** button is located at the bottom right.

SAP OEE How-To-Guide for Customer Extensions

3. Create an SAP OEE extension.



6 Other Reference Material

For more information, see the following guides at <http://service.sap.com/instguides> -> SAP Business Suite Applications -> SAP Manufacturing -> SAP MII-based Manufacturing Products -> SAP OEE Management:

- OEE MII Administrator's Guide
- OEE ERP Administrator's Guide

© 2013 SAP AG. All rights reserved.

SAP, R/3, SAP NetWeaver, Duet, PartnerEdge, ByDesign, SAP BusinessObjects Explorer, StreamWork, SAP HANA, and other SAP products and services mentioned herein as well as their respective logos are trademarks or registered trademarks of SAP AG in Germany and other countries.

Business Objects and the Business Objects logo, BusinessObjects, Crystal Reports, Crystal Decisions, Web Intelligence, Xcelsius, and other Business Objects products and services mentioned herein as well as their respective logos are trademarks or registered trademarks of Business Objects Software Ltd. Business Objects is an SAP company.

Sybase and Adaptive Server, iAnywhere, Sybase 365, SQL Anywhere, and other Sybase products and services mentioned herein as well as their respective logos are trademarks or registered trademarks of Sybase Inc. Sybase is an SAP company.

Crossgate, m@gic EDDY, B2B 360°, and B2B 360° Services are registered trademarks of Crossgate AG in Germany and other countries. Crossgate is an SAP company.

All other product and service names mentioned are the trademarks of their respective companies. Data contained in this document serves informational purposes only. National product specifications may vary.

These materials are subject to change without notice. These materials are provided by SAP AG and its affiliated companies ("SAP Group") for informational purposes only, without representation or warranty of any kind, and SAP Group shall not be liable for errors or omissions with respect to the materials. The only warranties for SAP Group products and services are those that are set forth in the express warranty statements accompanying such products and services, if any. Nothing herein should be construed as constituting an additional warranty.

