

Ajax Framework Page (AFP)

Features and Benefits



Claudia Pacheco
SAP Intelligence Platform and NetWeaver RIG

March 2010



THE BEST-RUN BUSINESSES RUN SAP™



Disclaimer



The information in this presentation is confidential and proprietary to SAP and may not be disclosed without the permission of SAP. This presentation is not subject to your license agreement or any other service or subscription agreement with SAP. SAP has no obligation to pursue any course of business outlined in this document or any related presentation, or to develop or release any functionality mentioned therein. This document, or any related presentation and SAP's strategy and possible future developments, products and or platforms directions and functionality are all subject to change and may be changed by SAP at any time for any reason without notice. The information on this document is not a commitment, promise or legal obligation to deliver any material, code or functionality. This document is provided without a warranty of any kind, either express or implied, including but not limited to, the implied warranties of merchantability, fitness for a particular purpose, or non-infringement. This document is for informational purposes and may not be incorporated into a contract. SAP assumes no responsibility for errors or omissions in this document, except if such damages were caused by SAP intentionally or grossly negligent.

All forward-looking statements are subject to various risks and uncertainties that could cause actual results to differ materially from expectations. Readers are cautioned not to place undue reliance on these forward-looking statements, which speak only as of their dates, and they should not be relied upon in making purchasing decisions.

Content



Features

- Harmonization of UI
- Intelligent client side technology
- Client side cache configuration
- Full visual customization
- Splash screen
- Top level Navigation
- Detailed Navigation
- Full Screen Mode
- AFP implementation of LSAPI

Features and benefits

Harmonization of UI



The "SAP Signature Design" is SAP's visual design that offers a harmonized user interface for SAP's diverse products as well as an advanced interaction theme.

SAP Signature Design theme for SAP NetWeaver Portal

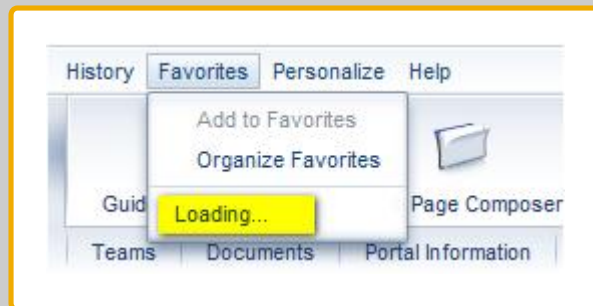
- Based on a new portal theme (font types and size, color scheme, etc)
- Integrated into the Ajax-based Framework Page (layout, header, navigation iViews, content area)
- Image based design.

Benefits

- Unified User graphical experience across SAP Applications/Offerings

Usage of AJAX

- Based on pure HTML and JavaScript. Some features are in GWT
- On demand data retrieval: Favorites, Search Categories and Navigation Hierarchy retrieved on demand using Ajax

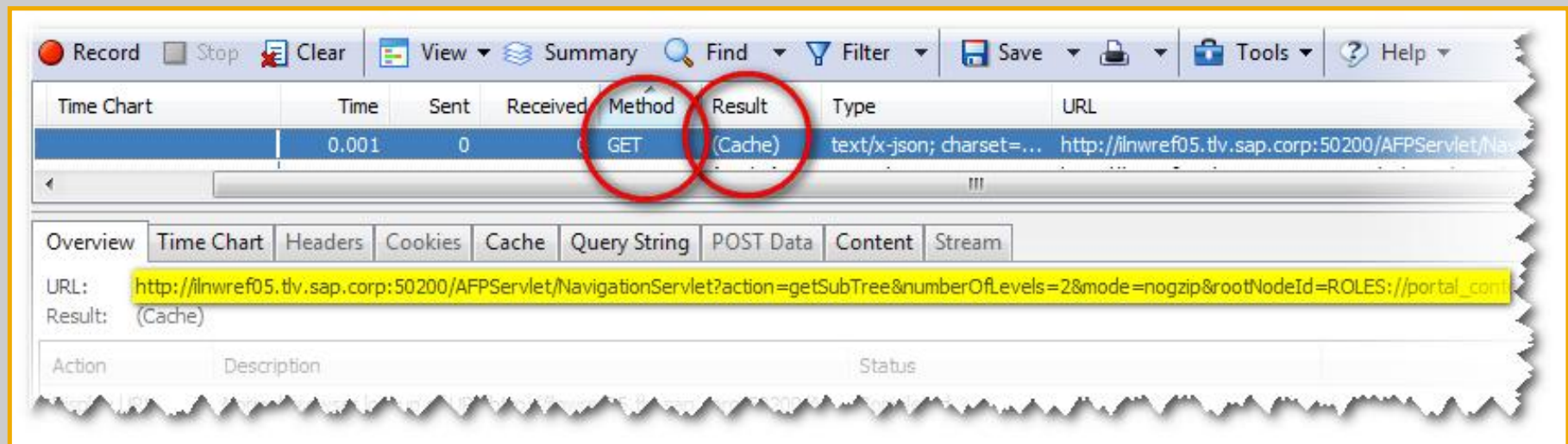


Benefits

- Enable applicative approach in web based applications (Eliminate all-page refreshes, load only page's consumed resources, etc.)
- Enable advanced user interaction functionality
- Performance and load improvements

Enhanced client side cache & cache configuration

- All navigation requests to the server are saved in the browser cache, based on the browser cache mechanism.
- All the AFP script are saved as well on the client cache



Benefits

- Reduced server load, move activities to client
 - On second Login navigation data is cached on the client
 - Rendering is done on the client after retrieving the raw portal data

Features and benefits

Client side cache configuration

1

2



There's no need to manually clear the browser cache when it is automatically invalidated

Browser cache is automatically invalidated when

- The SAP NetWeaver Portal is updated with a new Support Package (SP)
- Content has changed
- User's roles are modified (adding/removing all or parts of roles)



Full visual customization

- Theme editor support
- Configuration based customization

Customization only

- Customizing themes and iView properties

Add-on iViews

- Add an iView on top of the signature design

Smaller modifications

- Modifying the Mast head / page title bar
- Modifying the TLN / DTN

Custom development

- Replacing a signature iView

Rewritten framework

- Write framework page from scratch based on AFP API

Benefits

- Allows for simple branding capabilities and advanced personalization options
- Provides design flexibility

Features and benefits

Splash screen



The splash screen is a loading image that appear while the Signature design is loaded

Splash screen customization

- It can be enabled/disabled
- It can be changed to a different image through the theme editor
 - On the theme editor ⇒ Ajax FWK: Layout ⇒ URL to Splash Screen Image

Styles: Ajax FWK: Layout
Splash Screen

URL to Splash Screen Image	<input type="text"/>	<input type="button" value="Browse..."/>
Color of Background of Splash Screen	<input type="text" value="white"/>	Options
Padding of Splash Screen Image	<input type="text" value="58px 0px 0px 0px"/>	Options
Height of Splash Screen Image	<input type="text" value="355px"/>	Options
Width of Splash Screen Image	<input type="text" value="525px"/>	Options
URL to Animation Image for Loading	<input type="text"/>	<input type="button" value="Browse..."/>
Repetition of Animation Image for Loading	<input type="text" value="no-repeat"/>	Options
Height of Animation Image for Loading	<input type="text" value="9px"/>	Options
Width of Animation Image for Loading	<input type="text" value="145px"/>	Options

Benefits

- The splash screen provide a better perceived performance for the end user

Features and benefits

Top level Navigation (TLN)

1

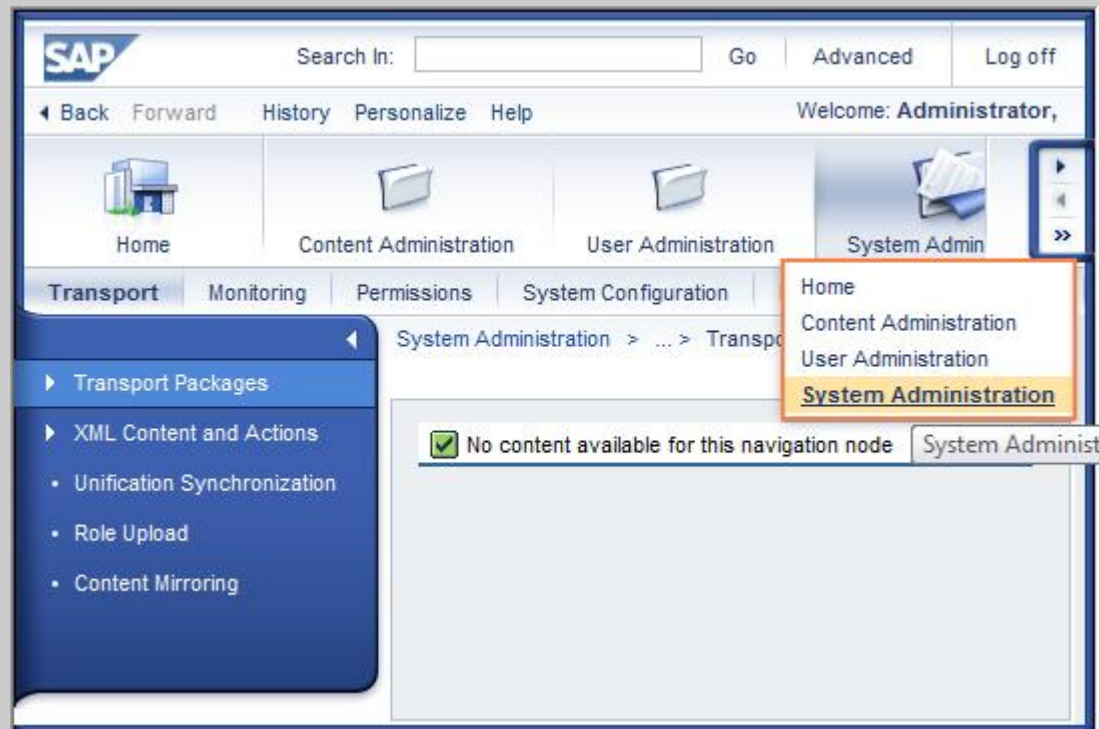
2



Overflow mechanism

If top-level navigation contains more items than can fit the width of the screen

- Scrolling arrows are enabled
- Additional popup menu will display all available TLN nodes



Benefits

- Easy to find hidden TLN nodes

Features and benefits

Top level Navigation (TLN)

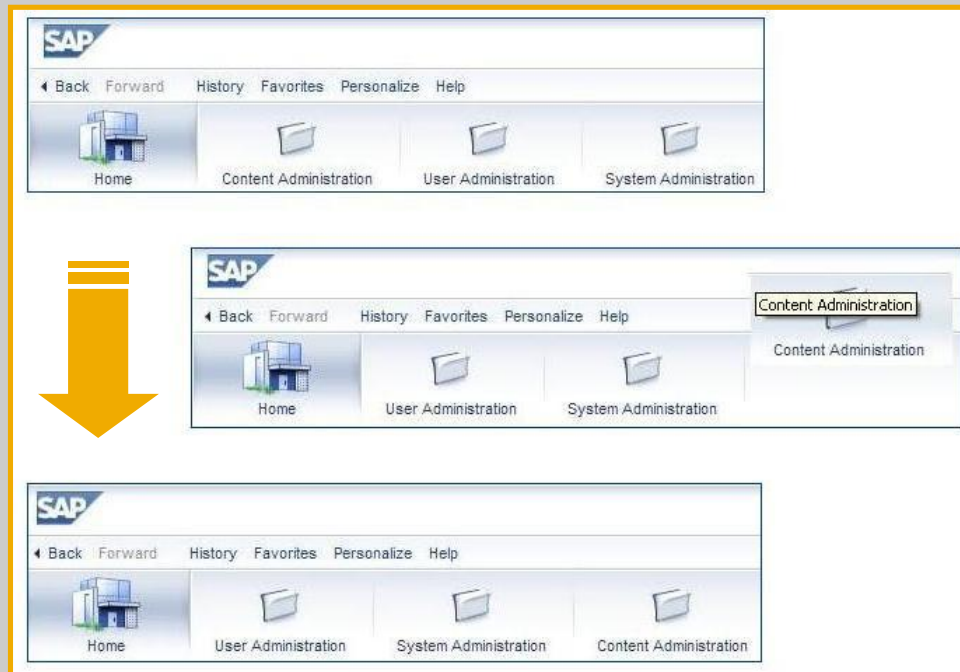
1

2



TLN Personalization

- Portal users can drag and drop items in top level navigation.



Benefits

- The new order is saved as part of the user's personalization scheme
- Administrators can specify that a number of top-level navigation entries remain fixed,
- This feature can be disabled

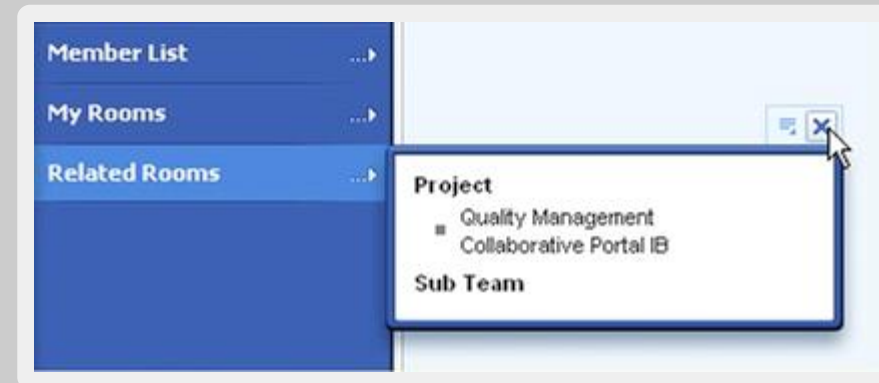
Features and benefits

Detailed Navigation (DTN)



New DTN Behavior & visualization (overflow)

- Resize by drag and drop
- Automatic semi-transparent vertical scroller
- Automatic horizontal scrolling
- Dynamic iViews New Visualization



Stateful Navigation

- The portal will remember which node the user navigated to, and will restore that node whenever the user navigates back to it's a parent node. (Stored in Client-Side)

Benefits

- Stateful Navigation simplifies the user navigation flow when navigating back and forward between pages

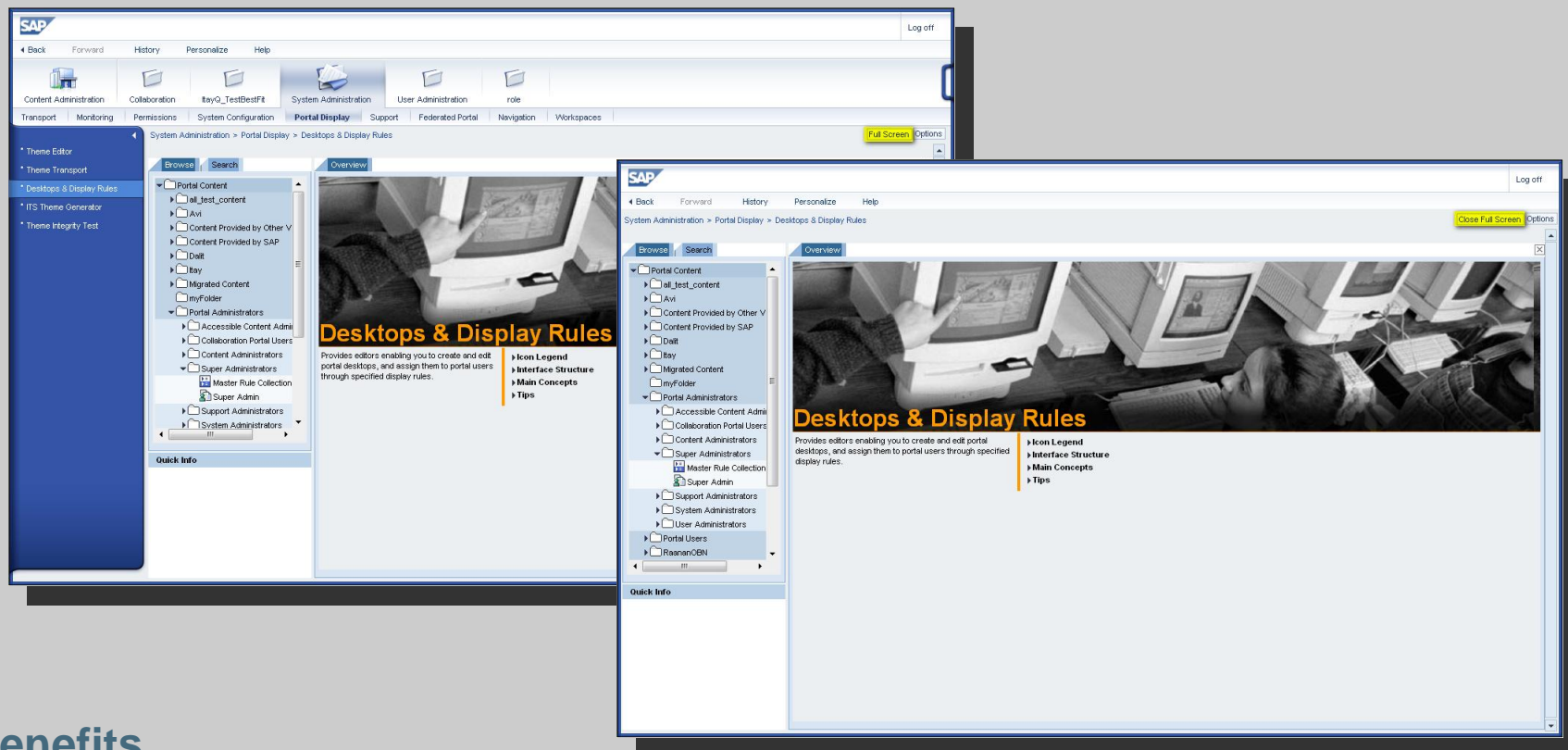
Features and benefits

Full Screen Mode



Full Screen Mode (Maximize/Minimize)

- The Full Screen button allows portal users to maximize and minimize the portal screen
- Full screen mode displays the content area without the navigation area



Benefits

- Allows more space for portal content

Features and benefits

AFP implementation of L-Shape API



L-Shape API is a set of client side API that allows communication between the L-Shape and the canvas

The AFP implements the LSAPI and have the following components:

LSAPI	• Implementation of interaction API with canvas
Model	• Holds all data that is used by client
View	• Provides look and feel: Signature design is one example but an administrator can change it
Controller	• Controls flow of navigation by event triggering
Service	• Allows set of actions on framework such as navigate, logoff

Benefits

- L-Shape provides separate Frame for Ajax loading of content
- L shape API allows client abilities for any skin

Ajax Framework Page

Further Information



- [AFP Wiki](#)
- [AFP Forum](#)
- [SAP Help Portal](#)
- [Learn more about SAP NetWeaver Portal 7.0.2](#)
- [Learn more about SAP NetWeaver Portal 7.3](#)
- [SAP NetWeaver Portal - Looking forward to 2010...](#)

Please visit also our

- How-To Guides in the SAP Community Network
www.sdn.sap.com/irj/sdn/howtoguides and

- Know-How Network Webinars in the Events section of the SAP Community Network

Thank you!



No part of this publication may be reproduced or transmitted in any form or for any purpose without the express permission of SAP AG. The information contained herein may be changed without prior notice.

Some software products marketed by SAP AG and its distributors contain proprietary software components of other software vendors.

Microsoft, Windows, Excel, Outlook, and PowerPoint are registered trademarks of Microsoft Corporation.

IBM, DB2, DB2 Universal Database, System i, System i5, System p, System p5, System x, System z, System z10, System z9, z10, z9, iSeries, pSeries, xSeries, zSeries, eServer, z/VM, z/OS, i5/OS, S/390, OS/390, OS/400, AS/400, S/390 Parallel Enterprise Server, PowerVM, Power Architecture, POWER6+, POWER6, POWER5+, POWER5, POWER, OpenPower, PowerPC, BatchPipes, BladeCenter, System Storage, GPFS, HACMP, RETAIN, DB2 Connect, RACF, Redbooks, OS/2, Parallel Sysplex, MVS/ESA, AIX, Intelligent Miner, WebSphere, Netfinity, Tivoli and Informix are trademarks or registered trademarks of IBM Corporation.

Linux is the registered trademark of Linus Torvalds in the U.S. and other countries.

Adobe, the Adobe logo, Acrobat, PostScript, and Reader are either trademarks or registered trademarks of Adobe Systems Incorporated in the United States and/or other countries.

Oracle is a registered trademark of Oracle Corporation.

UNIX, X/Open, OSF/1, and Motif are registered trademarks of the Open Group.

Citrix, ICA, Program Neighborhood, MetaFrame, WinFrame, VideoFrame, and MultiWin are trademarks or registered trademarks of Citrix Systems, Inc.

HTML, XML, XHTML and W3C are trademarks or registered trademarks of W3C®, World Wide Web Consortium, Massachusetts Institute of Technology.

Java is a registered trademark of Sun Microsystems, Inc.

JavaScript is a registered trademark of Sun Microsystems, Inc., used under license for technology invented and implemented by Netscape.

SAP, R/3, SAP NetWeaver, Duet, PartnerEdge, ByDesign, Clear Enterprise, SAP BusinessObjects Explorer and other SAP products and services mentioned herein as well as their respective logos are trademarks or registered trademarks of SAP AG in Germany and other countries.

Business Objects and the Business Objects logo, BusinessObjects, Crystal Reports, Crystal Decisions, Web Intelligence, Xcelsius, and other Business Objects products and services mentioned herein as well as their respective logos are trademarks or registered trademarks of SAP France in the United States and in other countries.

All other product and service names mentioned are the trademarks of their respective companies. Data contained in this document serves informational purposes only. National product specifications may vary.

The information in this document is proprietary to SAP. No part of this document may be reproduced, copied, or transmitted in any form or for any purpose without the express prior written permission of SAP AG.

This document is a preliminary version and not subject to your license agreement or any other agreement with SAP. This document contains only intended strategies, developments, and functionalities of the SAP® product and is not intended to be binding upon SAP to any particular course of business, product strategy, and/or development. Please note that this document is subject to change and may be changed by SAP at any time without notice.

SAP assumes no responsibility for errors or omissions in this document. SAP does not warrant the accuracy or completeness of the information, text, graphics, links, or other items contained within this material. This document is provided without a warranty of any kind, either express or implied, including but not limited to the implied warranties of merchantability, fitness for a particular purpose, or non-infringement.

SAP shall have no liability for damages of any kind including without limitation direct, special, indirect, or consequential damages that may result from the use of these materials. This limitation shall not apply in cases of intent or gross negligence.

The statutory liability for personal injury and defective products is not affected. SAP has no control over the information that you may access through the use of hot links contained in these materials and does not endorse your use of third-party Web pages nor provide any warranty whatsoever relating to third-party Web pages.