

DEPLOYABLE PROXY CREATION TO CONSUME A WEB SERVICE

Applies to:

SAP NetWeaver Developer Studio 7.0.11.

Summary

Using this document anyone can easily create a deployable proxy to consume a web service in SAP NetWeaver; just you have to follow few steps as it in this document.

Author: Rajes Ghosh

Company: HCL Technologies

Created on: May 8, 2007

Author Bio



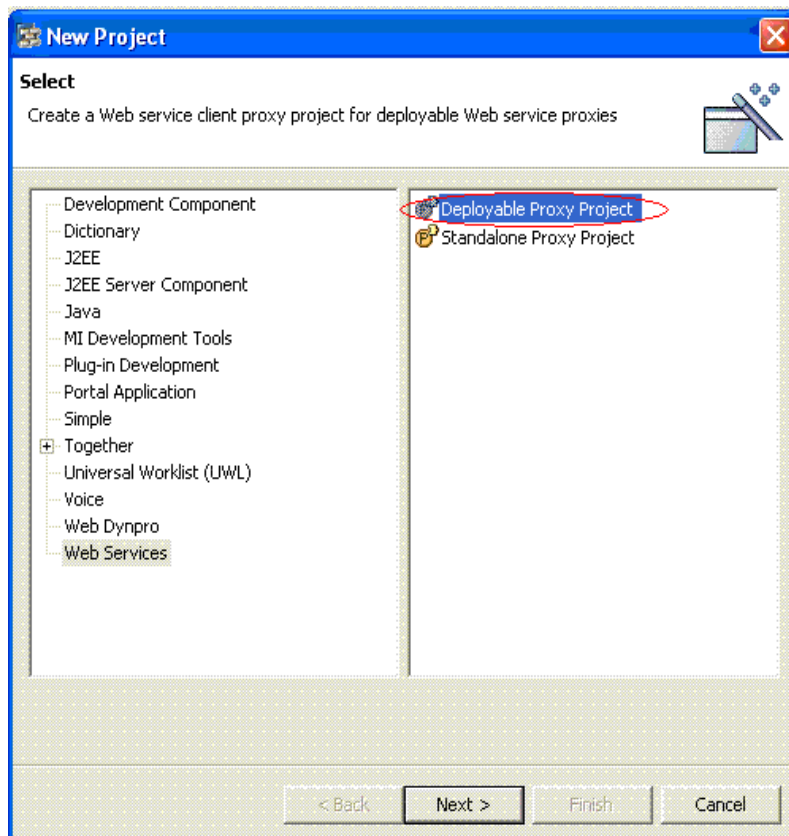
Rajes Ghosh is working for HCL Technologies. He is part of SAP NetWeaver Team in HCL. He is working as SAP NetWeaver consultant.

Table of Contents

Applies to.....	1
Summary	1
Author Bio.....	1
STEPS TO CREATE THE DEPLOYABLE PROXY TO CONSUME A WEB SERVICE	2
1. Create a Deployable Proxy Project	2
2. Enter Project Name	3
3. Create Client Proxy Definition	3
4. Give Proxy Name, Package Name and Select WSDL Source	4
5. Select the Web Service Deployed in J2EE Engine	4
6. Proxy Created	5
7. Build EAR for the Proxy	6
9. Deploy the Proxy EAR File.....	6
10. EAR Deployment Finished	7
Related Content.....	7
Disclaimer and Liability Notice.....	8

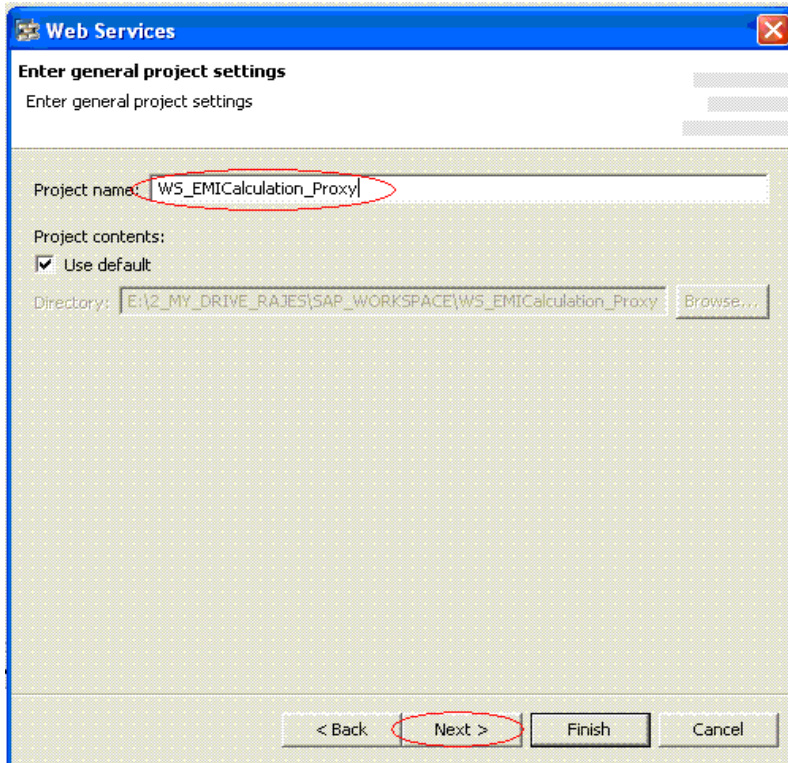
STEPS TO CREATE THE DEPLOYABLE PROXY TO CONSUME A WEB SERVICE

1. Create a Deployable Proxy Project

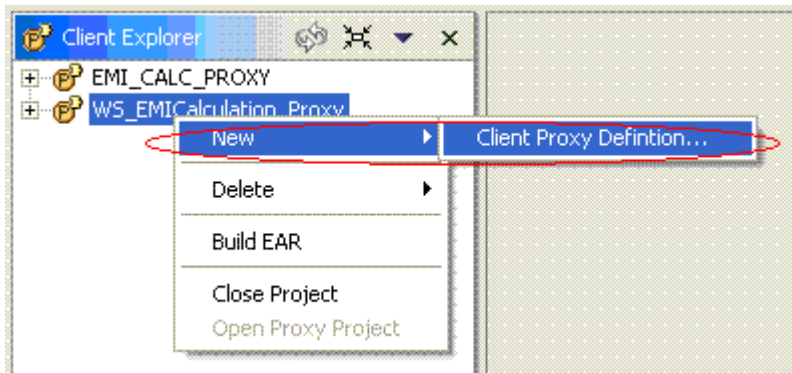


First create a new Deployable Proxy project by **File** → **New** → **Others** → **Web Service**

2. Enter Project Name

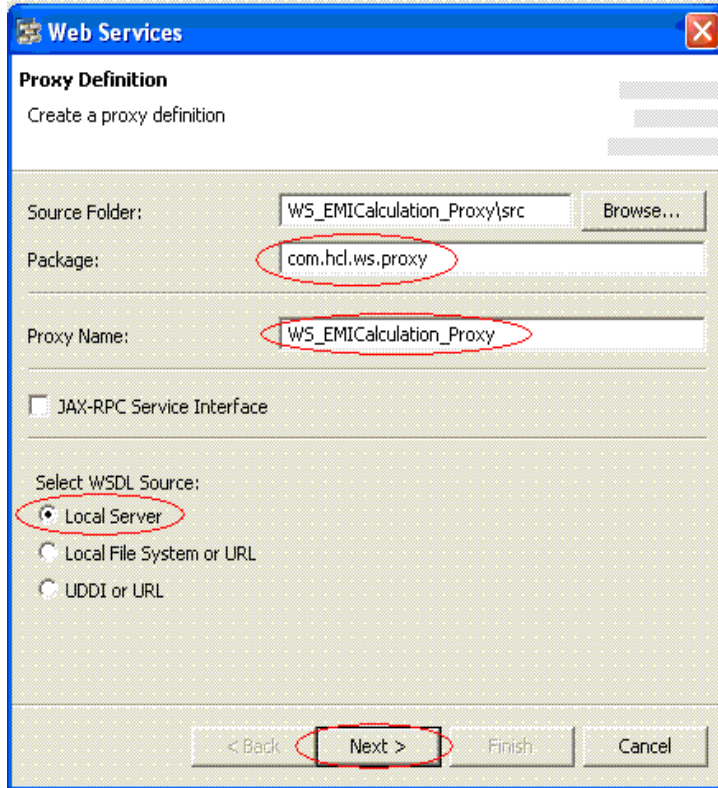


3. Create Client Proxy Definition



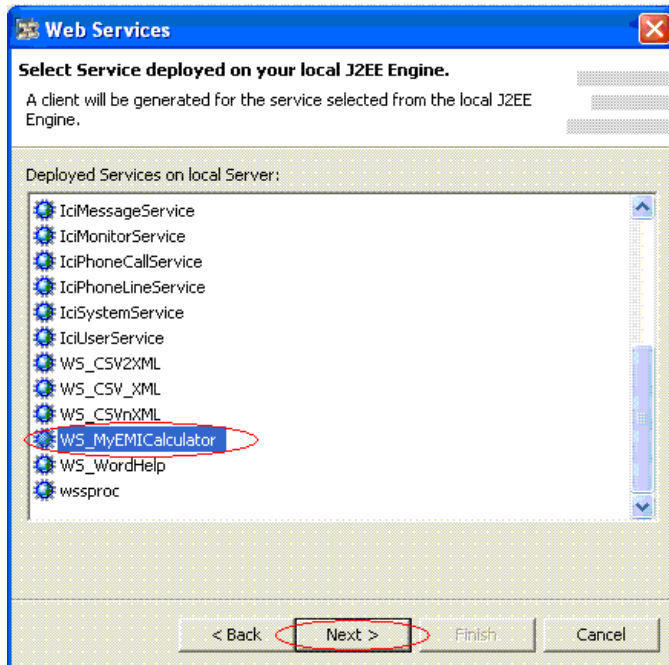
Create Proxy Definition by **New** → **Client Proxy Definition**.

4. Give Proxy Name, Package Name and Select WSDL Source



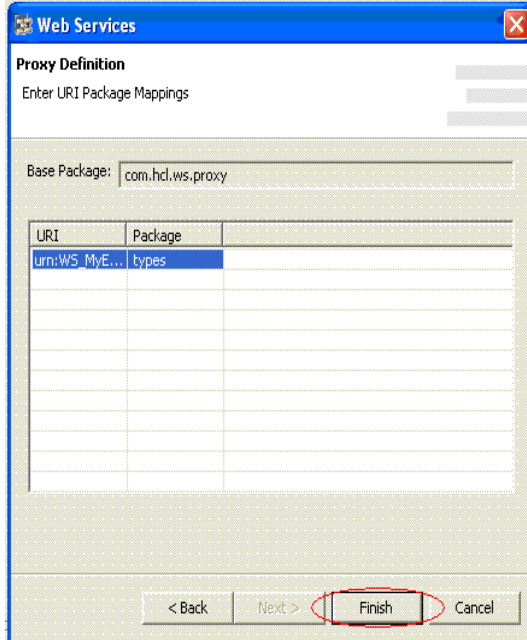
Give the required input, select the web service source and click **Next**.

5. Select the Web Service Deployed in J2EE Engine



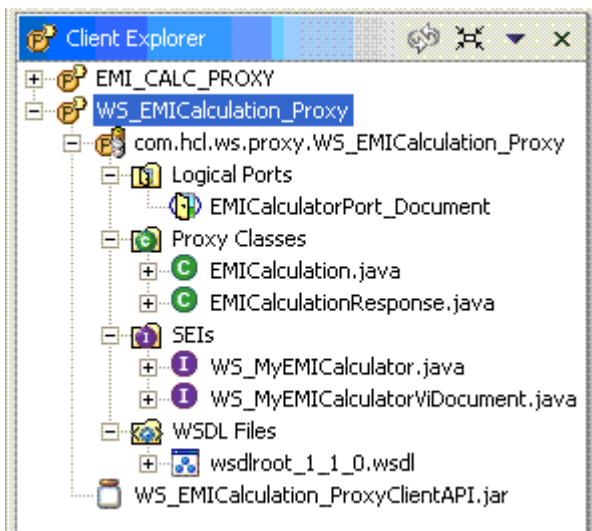
Select the required Web Service from the J2EE Engine for which you are going to create the Proxy.

Then Click **Next**.



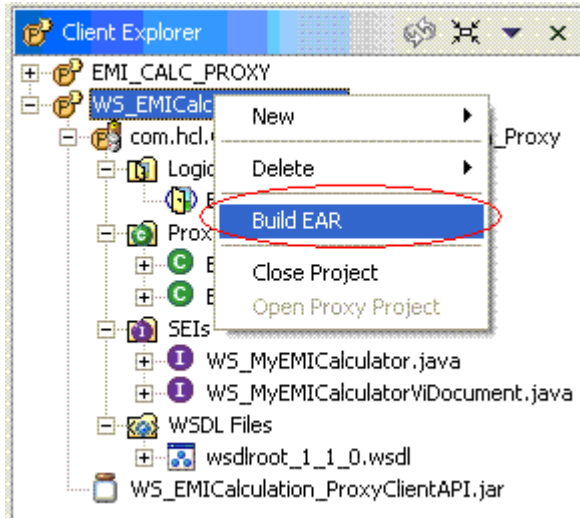
To complete the proxy creation process, click **Finish**.

6. Proxy Created



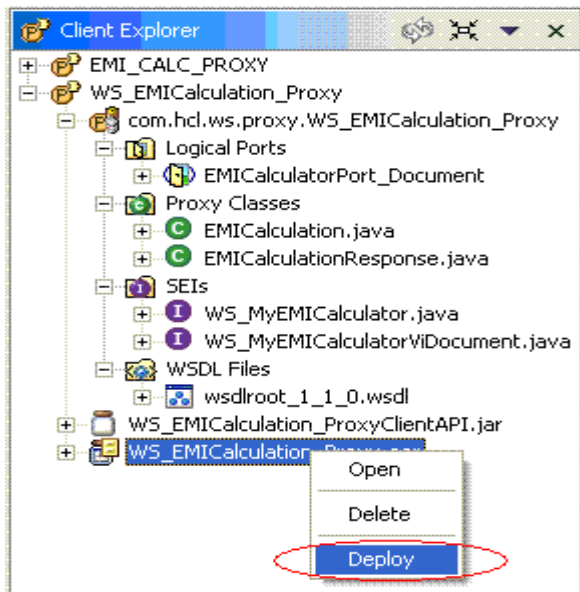
In Client Explorer Perspective you will find out that Proxy is created with all required classes and interfaces.

7. Build EAR for the Proxy



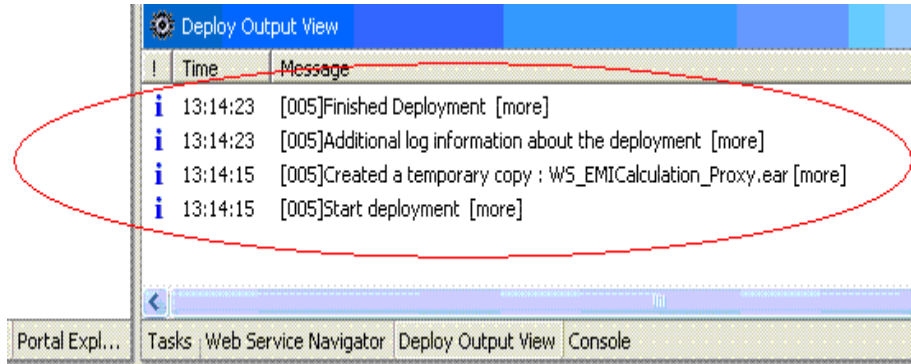
Create the EAR File by clicking the Build EAR menu.

9. Deploy the Proxy EAR File



Deploy the EAR File into J2EE Engine by clicking the Deploy menu.

10. EAR Deployment Finished



EAR Deployment has successfully completed. In deploy Output View you can see the message.

In my next article I will tell you how to use this deployable proxy to consume the web service in web application.

Related Content

Please include at least three references to SDN documents or web pages.

- http://help.sap.com/saphelp_erp2005/helpdata/en/2d/b9766df88f4a24967dae38cb672fe1/content.htm

Disclaimer and Liability Notice

This document may discuss sample coding or other information that does not include SAP official interfaces and therefore is not supported by SAP. Changes made based on this information are not supported and can be overwritten during an upgrade.

SAP will not be held liable for any damages caused by using or misusing the information, code or methods suggested in this document, and anyone using these methods does so at his/her own risk.

SAP offers no guarantees and assumes no responsibility or liability of any type with respect to the content of this technical article or code sample, including any liability resulting from incompatibility between the content within this document and the materials and services offered by SAP. You agree that you will not hold, or seek to hold, SAP responsible or liable with respect to the content of this document.