

# Information Broadcasting-Part 2 - System Settings



## Applies to:

SAP BW 3.5

## Summary

This article covers the information broadcasting (IB) setup process. As this is part-2, it talks all about the system settings that are required to set up the information broadcasting process apart from the system parameter settings (talked about in [part-1](#)). I have made all effort to catch the very detail of each step and present it in simple manner.

**Author:** Purvang Zinzuwadia

**Company:** Patni Computer Systems Ltd

**Created on:** 14 May 2008

## Author Bio



Purvang Zinzuwadia is working with Patni since 1.6 years. He is currently working on SAP-BW 3.5 and BI 7.0. He also worked on different areas in BW like modeling, reporting, production support, ETL process, and also worked on some other areas like information broadcasting.

## Table of Contents

Precalculation Service .....	3
Change Precalculation service setting.....	3
Windows XP Setting .....	3
Windows Server 2003 Setting.....	4
Registry Setting .....	4
Gateway Setting (Tx: SMGW) .....	5
Precalculation Server Registration (Tx: RSPRECADMIN).....	5
Maintain RFC Destination (Tx: SM59).....	6
Miscellaneous Settings/Checks.....	6
Related Content.....	9
Disclaimer and Liability Notice.....	10

There are quite a good number of steps involved in system setting, so I have put them into sequence of steps for ease of following them.

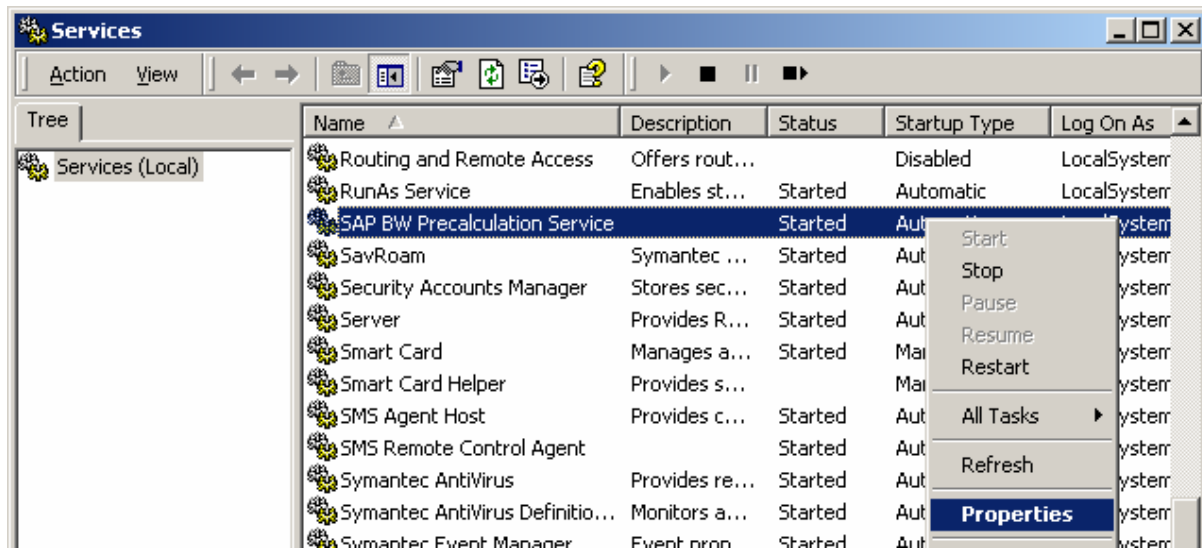
## Precalculation Service

First thing you need is, to install the latest version of BW Precalculation service. You can download and install it from the SAP Service Market place. Make sure that only one BW Precalculation service is installed on the machine.

### Change Precalculation service setting

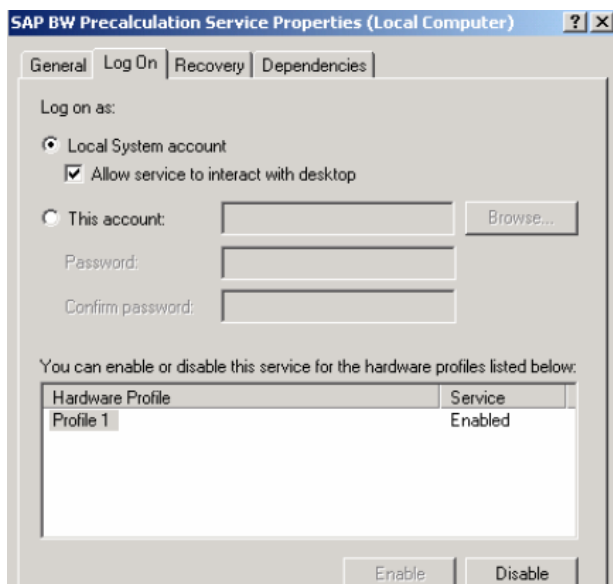
It is a mandatory setting to allow the service to interact with local machine otherwise it will not be able to run the report automatically.

- To view running services, follow the path: "Control Panel → Administrative Tools → Services"
- Right click on BW Precalculation service and select properties



Then you have to change the following setting as per the operating system installed on the machine.

### Windows XP Setting



## Windows Server 2003 Setting

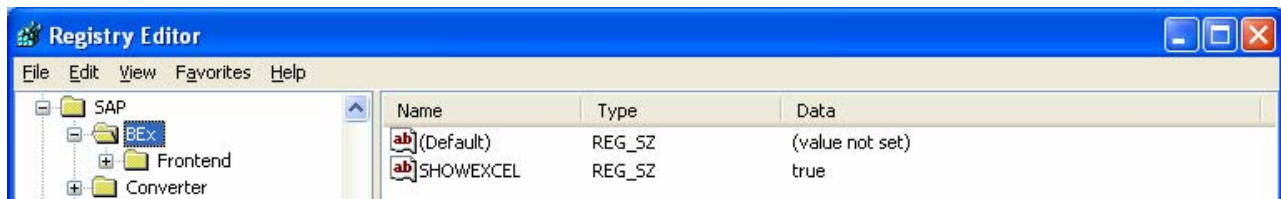
Specify the account name and password for the authorization.



## Registry Setting

Add the following registry key. It is pre-requisite that Business Explorer is installed and also any report is run at least once.

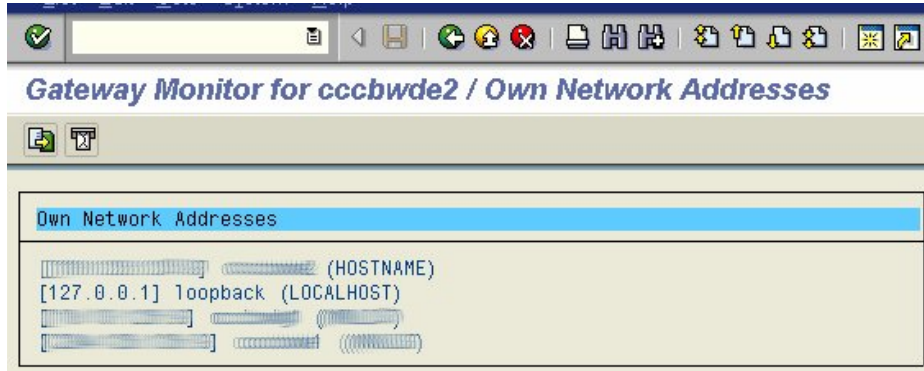
- To open registry, follow the path: Start → Run → type REGEDIT
- Go to location “HKEY\_LOCAL\_MACHINE\Software\Sap\BEx”
- Create a string value, “SHOWEXCEL”
- Assign value “true” to the string value



## Gateway Setting (Tx: SMGW)

- Go to transaction SMGW
- Click on menu "Goto" → Expert Functions → Network Addresses.

This will display the IP address of BW server labeled with "HOSTNAME" which you need to add into your local host file "HOSTS" in your system directory of operating system.



Format of the entry is: "IPADDRESS DOMAINNAME"

So check local HOSTS file under the following paths.

Windows XP: C:\WINDOWS\system32\drivers\etc\

Windows Server 2003: C:\WINNT\system32\drivers\etc\

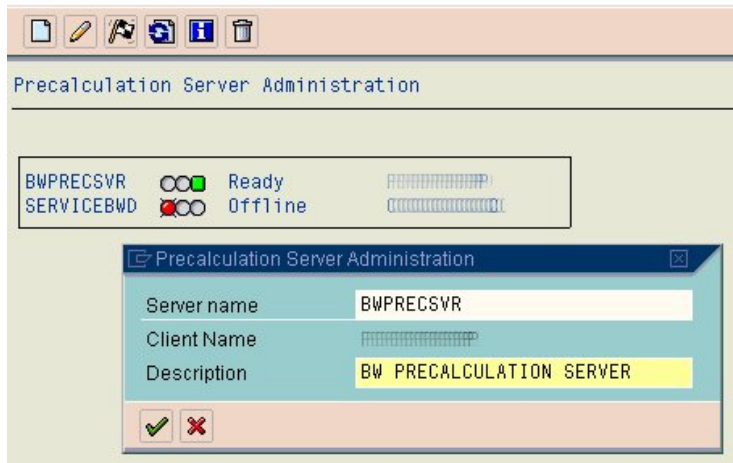
Also add your local machine's "IPADDRESS" and "DOMAINNAME" into "HOSTS" file (in above specified format), if your precalculation server and BW server are set on separate machine. "DOMAINNAME" should be the name which you want to set as your precalculation server. (This will be the case, when BW Precalculation server is installed on the local machine and BW server is another machine. Therefore "local machine's IPADDRESS" refers to the IP address of BW Precalculation server machine.)

## Precalculation Server Registration (Tx: RSPREADMIN)

- Go to transaction RSPREADMIN
- Create a Precalculation server
- Give the "DOMAINNAME" (specified into HOSTS file in above step) for "Server name"

"Client Name" should display machine name

## SAP BW Excel Precalculation -Administration-



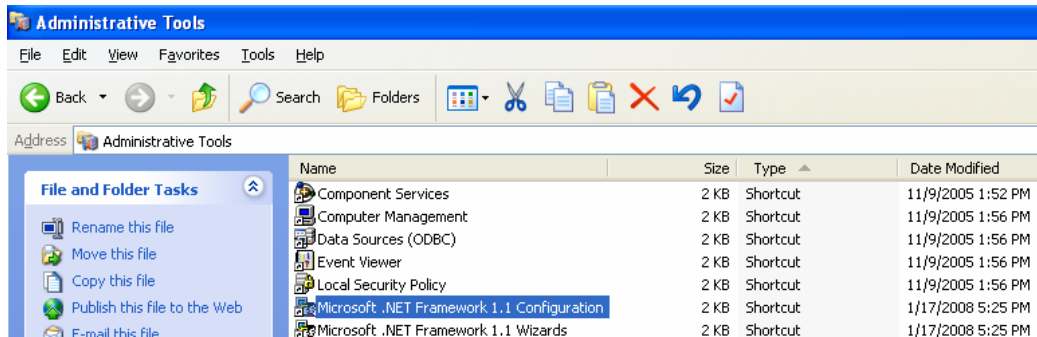
### Maintain RFC Destination (Tx: SM59)

After creation of BW Precalculation server from RSPRECADMIN, an entry is automatically created in RFC destination (SM59) with name "PREC\_<SERVERNAME>". Check this entry in transaction SM59.

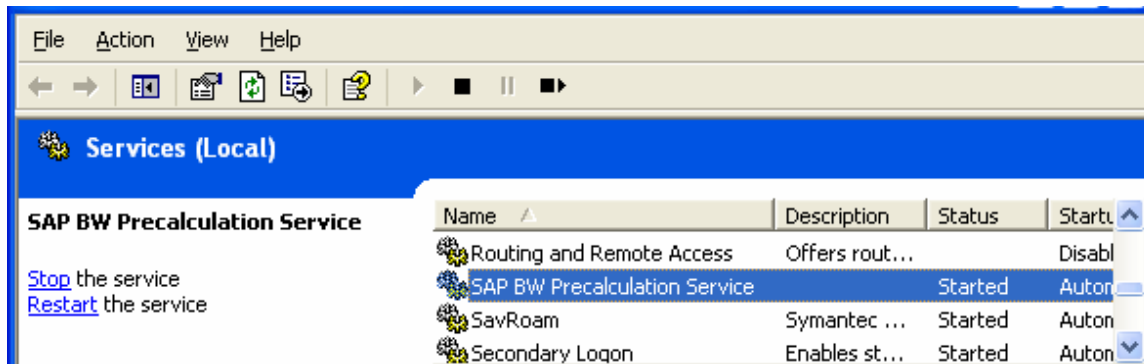
OBDIAGM	CALL OBJECT DIAGRAM
OLE_CONTROLLER	OLE automation controller
PREC_BWPRESVR	Generated RFC Destination for Preca
PREC_SERVICEBWD	Generated RFC Destination for Preca

### Miscellaneous Settings/Checks

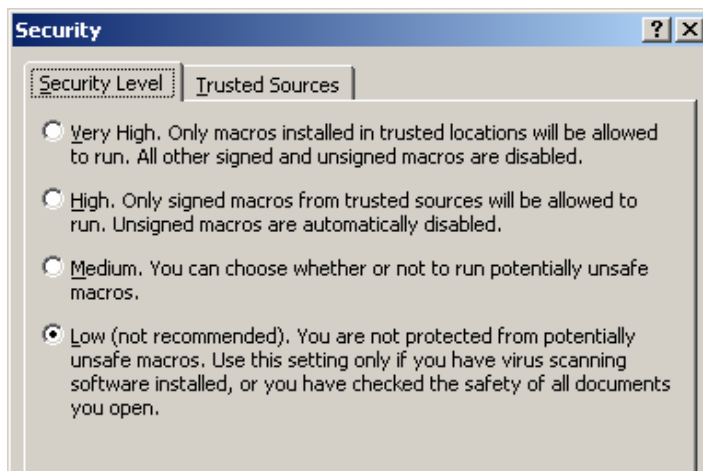
- SAP GUI version and Microsoft Office Excel should have latest updates/versions on the BW Precalculation Server.
- Latest front end patches should be installed for BEx Analyzer and also for SAP logon pad.
- Latest version of Microsoft .Net 1.1 should be installed. To check the version, follow the path: "Control Panel → Administrative Tools → Microsoft .NET Framework 1.1 Configuration". Open it and you can check the version here.



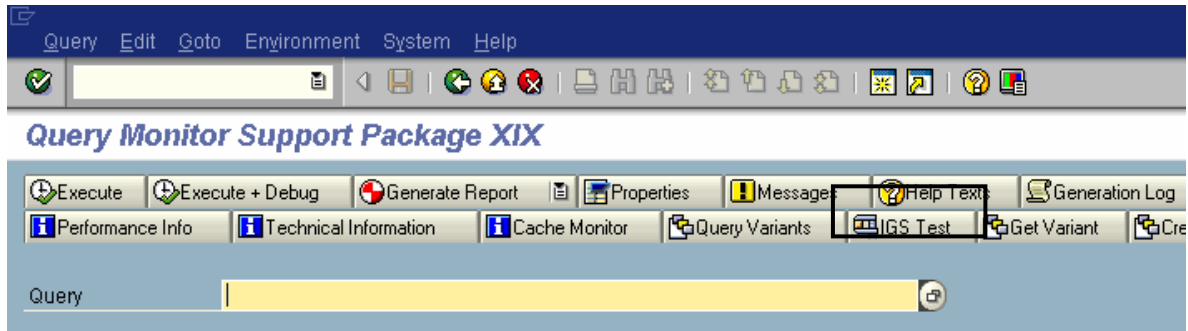
- Make sure BW Precalculation service has started and is running. Follow the path "Control Panel → Administrative Tools → Services".



- Check BW Precalculation server in transaction RSPREADMIN, there should be GREEN light against the name of Precalculation server that means it is ready and running.
- If you're running Microsoft Excel 2003 SP2, make sure that latest hot fix is installed:  
<http://support.microsoft.com/kb/912022/en-us>
- For all the workbooks that you need to broadcast, make sure that you have cleared the query results from workbook in BEx before saving the workbook.
- Set the email address for sending user in transaction SU01, under "Address" tab.
- Make sure the Macro security level in Microsoft Excel is set to "low" on the BEx pre-calculation server. To make this setting in Excel, follow the path: "Tools → Macro → Security". Following dialog box will appear, and make changes as shown.



- Make sure the IGS 6.40 is installed as this is required to be able to broadcast zip files. IGS test is available through transaction RSRT. Make sure this test is successful. Upon successful test, it will show some sample graphic.



Now, your BW Precalculation server is ready to broadcast the BEx workbooks. Either broadcast the workbook to run manually/immediately or schedule them at specific time intervals or dates.



## Related Content

- <https://service.sap.com/~sapidb/012003146900000085752006E/HowtoInformationBroadcasting.pdf>
- [http://help.sap.com/saphelp\\_nw04/helpdata/en/ef/4c0b40c6c01961e10000000a155106/frameset.htm](http://help.sap.com/saphelp_nw04/helpdata/en/ef/4c0b40c6c01961e10000000a155106/frameset.htm)
- [Information Broadcasting Part 1 – System Parameter Setting](#)

## Disclaimer and Liability Notice

This document may discuss sample coding or other information that does not include SAP official interfaces and therefore is not supported by SAP. Changes made based on this information are not supported and can be overwritten during an upgrade.

SAP will not be held liable for any damages caused by using or misusing the information, code or methods suggested in this document, and anyone using these methods does so at his/her own risk.

SAP offers no guarantees and assumes no responsibility or liability of any type with respect to the content of this technical article or code sample, including any liability resulting from incompatibility between the content within this document and the materials and services offered by SAP. You agree that you will not hold, or seek to hold, SAP responsible or liable with respect to the content of this document.