

Customization of Organize Entries for Portal Favorites



Applies to:

SAP NetWeaver 7.0 and EHP

Summary

The scope of the document is to give detailed information on the customization of Organize Entries in order to make it more user-friendly. In the standard Organize Entries, the user will not be able to select more than one entry to perform an action. Customization of Organize Entries makes it possible to select more than one Favorite added to the list and perform actions like delete, copy, rename.

Author: Sai Sathyaswari Mosur

Company: Infosys Technologies Limited

Created on: 30 November 2010

Author Bio

Sai Sathyaswari has been working with Infosys Technologies Limited as System Engineer, focusing on implementation and maintenance – particularly in the areas of JAVA and ABAP Web Dynpro, PDK (Portal Development Kit), MDM, MDG for close to 2 years.

Table of Contents

Purpose and Scope Of Organize Entries	3
Customization of Organize Entries	5
2.1 New (Link, Folder or Internal Page)	6
2.1.1 New Folder.....	6
2.1.2 New Link	7
2.1.3 New External Link	10
2.2 Delete	11
2.3 Rename.....	12
2.4 Copy	13
Related Content.....	16
Disclaimer and Liability Notice.....	17

Purpose and Scope Of Organize Entries

Organize Entries:

Organize Entries is available on the Detailed navigation of the Portal Page, which has all the pages which are added to the portal favorites list. It is possible for the user to navigate to the respective page on click of the link.

Customization of Organize Entries:

The scope of the document is to give detailed information on the customization of Organize Entries in order to make it more user-friendly. In the standard Organize Entries, the user will not be able to select more than one entry to perform an action. Customization of Organize Entries makes it possible to select more than one Favorite added to the list and perform actions like delete, copy, rename.

List of external .jar files:

- bc.rf.framework_api
- bc.rf.global.service.urlgenerator
- bc.util.public_api
- com.sap.security.api.ep5
- bc.rf.global.service.mime_api
- bc.sf.framework_api
- com.sap.security.api
- prtapi
- servlet-2.3

The jar files are available in the following path

IDE\IDE70\eclipse\plugins\com.sap.km.rfwizard_7.1.5\lib

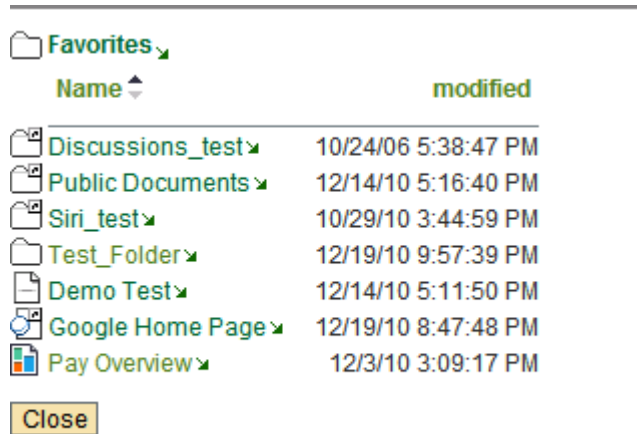


Fig I – Standard organize entries in portal

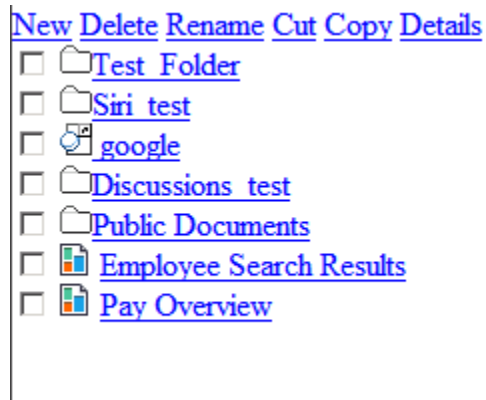


Fig II – Customized organize entries in portal

Customization of Organize Entries

When the user clicks on Organize Entries, a Screen opens up and the favorites list is displayed. This is the general screen of Organize Entries.

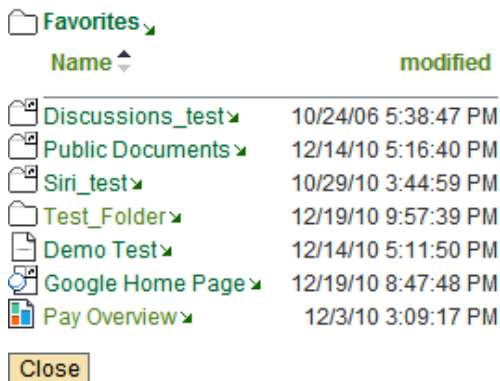


Fig 1 – Standard organize entries in portal

The customized Organize Entries has check-box for the user to select multiple entries to perform various operations.

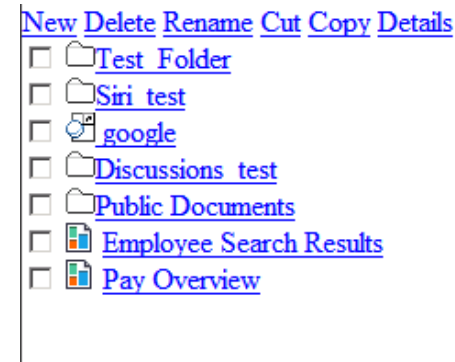


Fig 2 – Customized organize entries in portal

The general API to get the current logged-in user with the resource factory and context. This code will be used further to get the reference to the various resources within the KM content.

```
com.sapportals.portal.security.usermanagement.IUser user =
WPUMFactory.getUserFactory().getEP5User(HttpServletRequest request.getUser());
com.sapportals.wcm.repository.IResourceContext resourceContext =
new com.sapportals.wcm.repository.ResourceContext(user);
com.sapportals.wcm.repository.IResourceFactory resourceFactory =
com.sapportals.wcm.repository.ResourceFactory.getInstance();
com.sapportals.wcm.repository.IResource resource = null;
```

Tab 1 – Common code to get the resource context and resource factory

The operation possible is:

2.1 New (Link, Folder or Internal Page)

When we mouse-over on New Button link, a drop down is displayed with 3 options Folder, Link, External Link giving the user an option to create new Folder or an external link e.g. google.com or an internal link from the KM Content in the portal

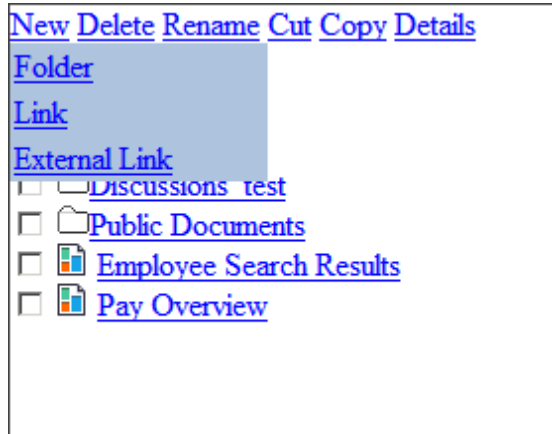


Fig 3 – Custom Organize entries with menu options

2.1.1 New Folder

If the user selects Folder button link, a new folder will be created and will be added to the favorites list.

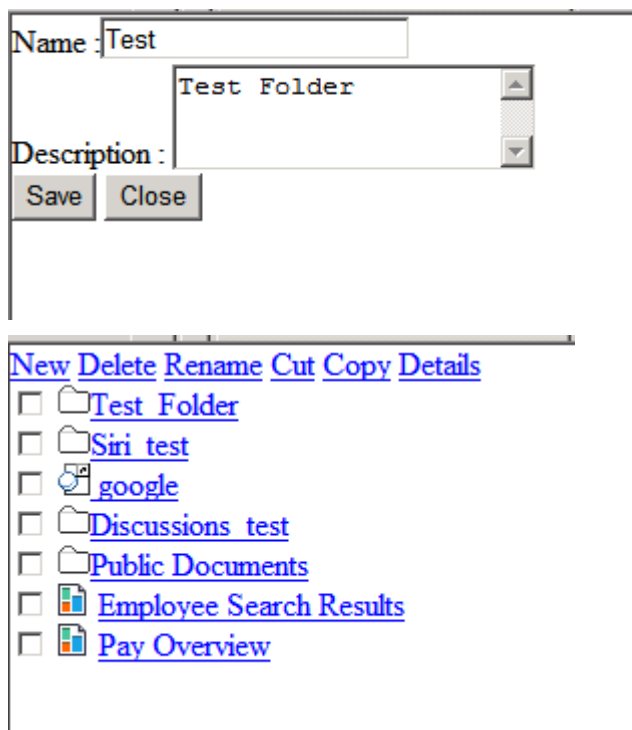


Fig 4 – Created new folder in organize entries

In case of folder, the standard API available is createCollection.

The code for creating a folder is:

Standard API:

```
createCollection(String name, IPropertyMap properties, boolean ignorepropertiesValue);
```

Actual Code:

```
IPropertyMap map = null;
```

```
RID Target = null;
```

```
com.sapportals.wcm.repository ICollection start = null;
```

```
map = new com.sapportals.wcm.repository.PropertyMap();
```

```
Target = RID.getRID("/userhome/"+user.getId()+"/favorites");
```

```
start = (com.sapportals.wcm.repository ICollection)resourceFactory.getResource(Target,resourceContext);
```

```
start.createCollection("Test Folder", map, true);
```

Tab 2 – Code to create a new folder in favorites list

2.1.2 New Link

When Link button link is clicked, the screen opens up to enable the user to select the page from the KM Public Documents



The screenshot shows a web form for adding KM content as favorites. It consists of two rows of input fields and buttons. The first row has a label 'URL/Address:' followed by a text input field and a 'Browse' button. The second row has a label 'Name:' followed by a text input field, and 'Save' and 'Close' buttons.

Fig 5 – UI to add KM content as favorites

When the user clicks on Browse, the KM content is displayed and the user can navigate to a folder or a document in the list and chose them (recursive folder content viewing is possible)

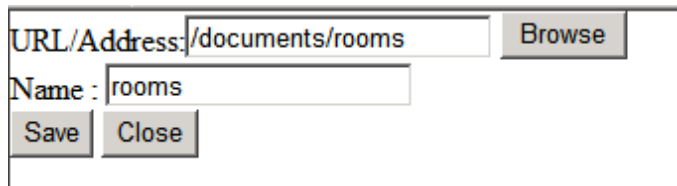
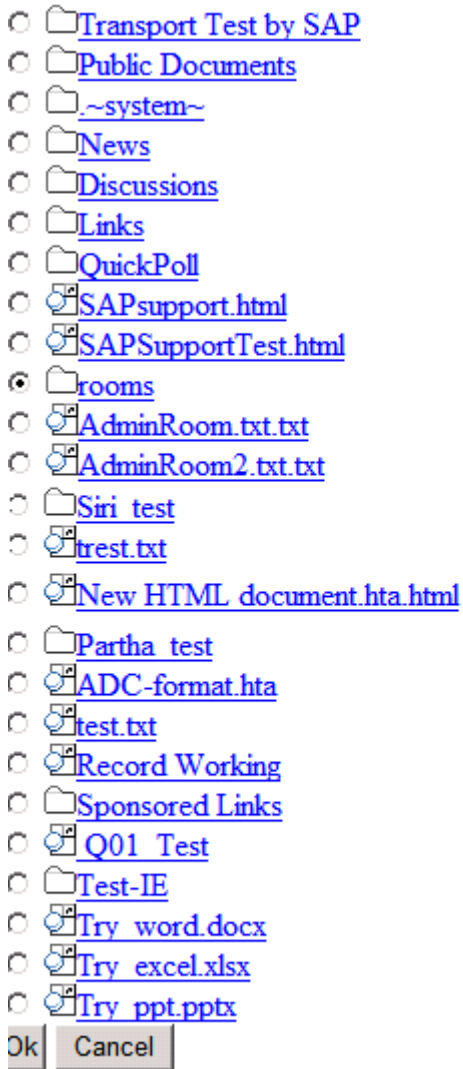


Fig 6 – UI to add KM content as favorites

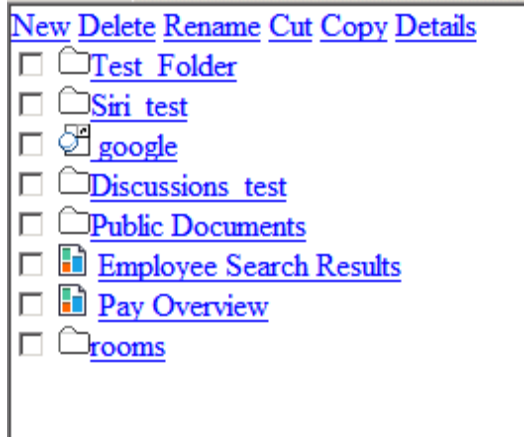


Fig 7 – Portal favorites list updated with the new KM content

The folder rooms have been added from the KM Content.

The piece of code required for creating the link in the Favorites folder in KM Content. This is the standard API's provided by SAP for the purpose of creating a link in the Favorites folder for internal link.

Standard API:

```
createLink(String Name, URL TargetURL, linkType Type, IPropertyMap properties, boolean ignorepropertiesValue);
```

Actual Code:

```
com.sapportals.wcm.repository ICollection start = null;
pathRID = RID.getRID((String)resource.getAccessRID());
resource = resourceFactory.getResource(pathRID, resourceContext);
map = new com.sapportals.wcm.repository.PropertyMap();
Target = RID.getRID("/userhome/"+user.getId()+"/favorites");
start = (com.sapportals.wcm.repository ICollection)resourceFactory.getResource(Target,resourceContext);
start.createLink(resource.getName()+"", URL.getInstance(pathRID),
com.sapportals.wcm.repository.enum.LinkType.INTERNAL, map, true);
```

Tab 3 – Code to add existing KM content as favorites

2.1.3 New External Link

When external link is clicked, a screen opens up.

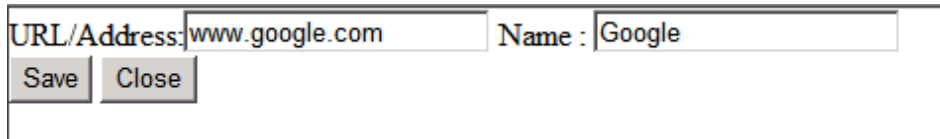


Fig 8 – UI to add an external link as portal favorites

When save is clicked, the link is added to the favorites list.

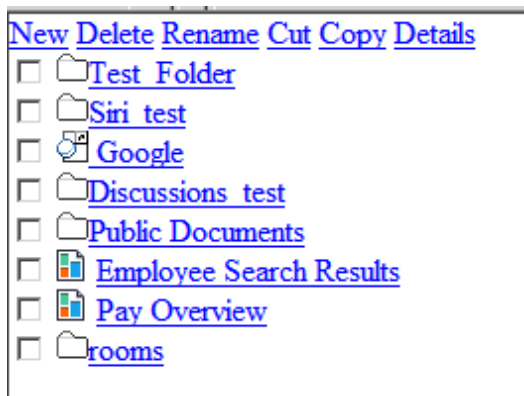


Fig 9 – Portal favorites list updated with the new external link

In case of external link, it is the same API but link type is EXTERNAL

Standard Code:

```
createLink(String Name, URL TargetURL, linkType Type, IPropertyMap properties, boolean ignorepropertiesValue);
```

Actual Code:

```
IPropertyMap map = null;
RID Target = null;
com.sapportals.wcm.repository ICollection start = null;
map = new com.sapportals.wcm.repository.PropertyMap();
Target = RID.getRID("/userhome/"+user.getId()+"/favorites");
com.sapportals.wcm.util.uri.IUriReference uriRef =new
com.sapportals.wcm.util.uri.UriReference("www.google.com", null, "");
start = (com.sapportals.wcm.repository ICollection)resourceFactory.getResource(Target,resourceContext);
start.createLink("Google", URL.getInstance(uriRef),
com.sapportals.wcm.repository.enum.LinkType.EXTERNAL, map, true);
```

Tab 4 – Code to add existing external link as favorites

2.2 Delete

The next action that is possible after adding the pages is deleting them. It is possible to delete single or multiple pages at the same time.

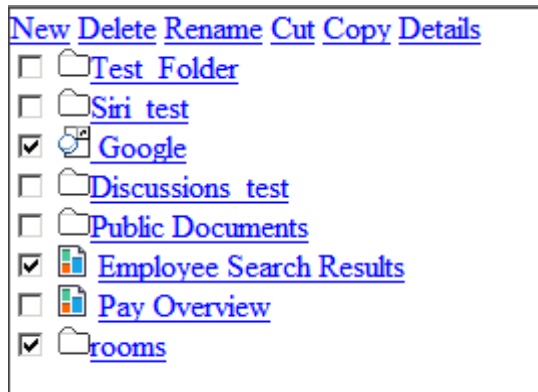


Fig 10 – UI for selecting the favorites to delete

Now 3 items Google, Employee Search Results, rooms, have been selected for deletion. When delete is clicked, a pop-up opens to confirm the deletion of the pages. If cancel is clicked, it will not be deleted.

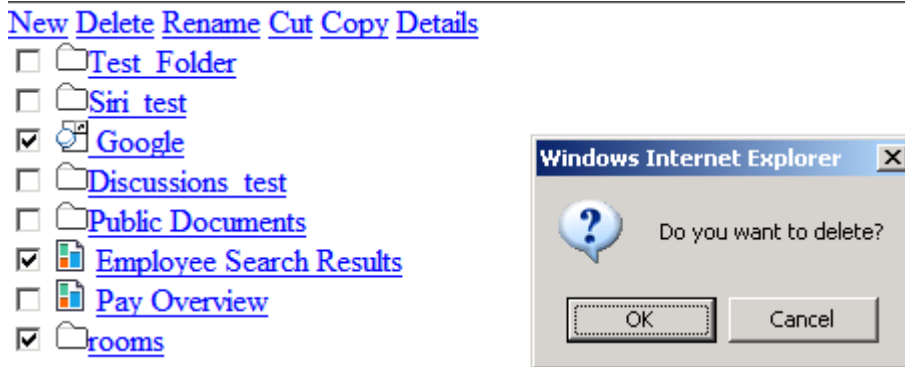


Fig 11 – Confirmation message to delete

If ok is clicked, the pages are deleted.

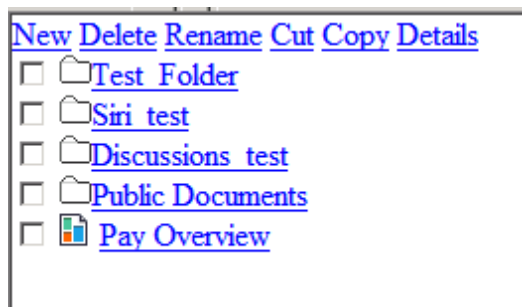


Fig 12 – New portal favorites list after deletion

The code for deleting the Page is:

Standard Code:

```
resource.delete();
```

Actual Code:

```
com.sapportals.wcm.repository.IResource resource = null;
resValue = "/favorites/Google":"/favorites/EmployeeSearchResults":"/favorites/rooms";
// ':' is used just to separate multiple resources
dummy1 = resValue.split(":");
//incase more than one value is selected//
for(int i =0; i< dummy1.length; i++){
resource = null;
RID Target = RID.getRID(dummy1[i].trim());
resource = (IResource)resourceFactory.getResource(Target,resourceContext);
resource.delete();
}
```

Tab 4 – Code for delete portal favorites

2.3 Rename

The next action is renaming the page or a file.

[New](#) [Delete](#) [Rename](#) [Cut](#) [Copy](#) [Details](#)

- [Test Folder](#)
- [Siri test](#)
- [Google](#)
- [Demo Test.docx](#)
- [Discussions test](#)
- [Public Documents](#)
- [Pay Overview](#)

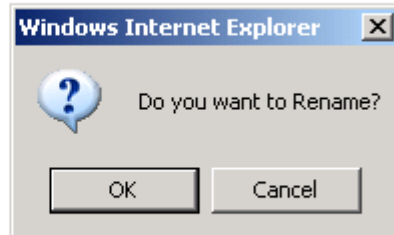


Fig 13 – Confirmation message to rename a resource

A pop-up opens for confirmation and on action of ok, a new screen opens up with a field to enter the new name.

Fig 14 – UI for new name

Once ok is clicked, it goes back to the main screen with the new name.

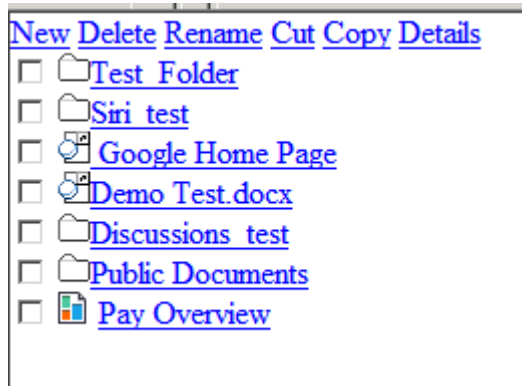


Fig 15 – Portal favorites after changing the name

The code for renaming the page is:

Standard Code:

```
resource.rename(String Newname);
```

Actual Code:

```
com.sapportals.wcm.repository.IResource resource = null;
RID Target = RID.getRID("//favorites/Google");
resource = (IResource)resourceFactory.getResource(Target,resourceContext)
resource.rename("Google Home Page");
```

Tab 5 – Code to rename a resource

2.4 Copy

The next action is Copy. The user can select one or more pages and copy it to a folder

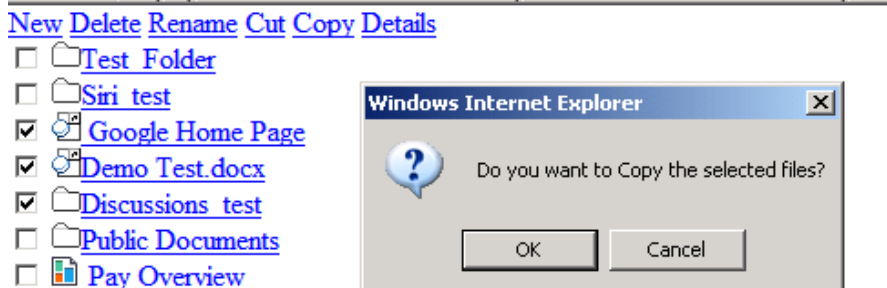


Fig 16 – Confirmation message to copy a resource

When ok is clicked the list of folder content in the favorites is displayed.

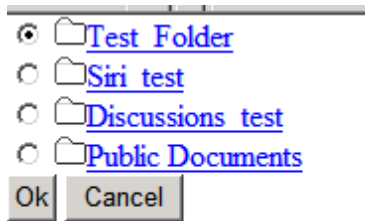


Fig 17 – UI to select the source folder

The contents have been copied to the folder.

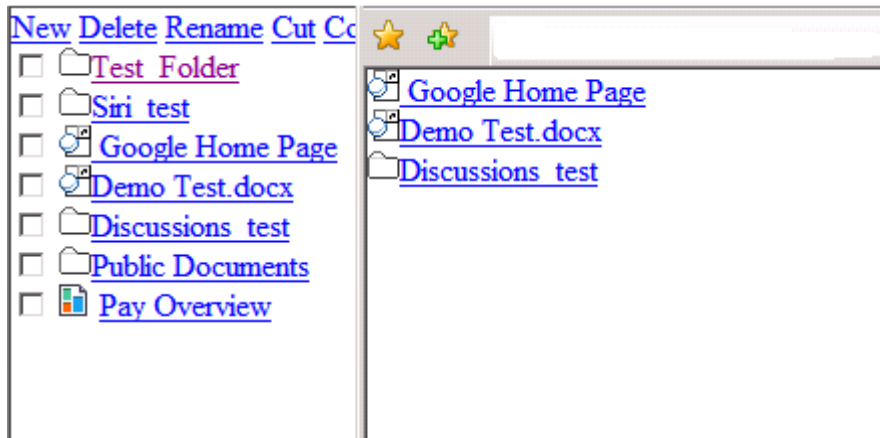


Fig 18 – Portal favorites after folder copy

The code for copying the page to a folder is:

Standard Code:

```
resource.copy(RID destination RID, ICopyparameter param);
```

Actual Code:

```
String copyValue = null;
String splitVal[] = new String[100];
copyValue = "/favorites/Google Home Page":"/favorites/Demo Test.docx":"/favorites/Discussions test";
splitVal = copyValue.split(":");
if((resource.getName()+":"+resource.getAccessRID())!= null){
radioVal = resource.getName()+":"+resource.getAccessRID();
Target = radioVal.split(":");
}
for(int i =0; i< splitVal.length; i++){
RID pathRID = RID.getRID(splitVal[i].trim());
com.sapportals.wcm.repository.IResource resourceCopy =
resourceFactory.getResource(pathRID, resourceContext);
RID Target1 = RID.getRID(Target[1]+"/"+resourceCopy.getName());
```

```
ICopyParameter copyOptions = new CopyParameter();  
copyOptions.setIgnorePropertyFailures(true);  
copyOptions.setOverwrite(true);  
IResource copy = resourceCopy.copy(Target1,copyOptions);  
}
```

Tab 6 – Code to copy KM content

It is possible for the user to navigate to the respective page on click of the link.

Related Content

The main purpose is to customize the Organize entries and make it more user-friendly. For further information on the standard API's, you can refer

<https://help.sap.com/javadocs/NW04S/SPS09/km/index.html>.

The link to download servlet-2.3 jar is available below:

<http://www.java2s.com/Code/Jar/STUVWXYZ/DownloadServlet23jar.html>

Disclaimer and Liability Notice

This document may discuss sample coding or other information that does not include SAP official interfaces and therefore is not supported by SAP. Changes made based on this information are not supported and can be overwritten during an upgrade.

SAP will not be held liable for any damages caused by using or misusing the information, code or methods suggested in this document, and anyone using these methods does so at his/her own risk.

SAP offers no guarantees and assumes no responsibility or liability of any type with respect to the content of this technical article or code sample, including any liability resulting from incompatibility between the content within this document and the materials and services offered by SAP. You agree that you will not hold, or seek to hold, SAP responsible or liable with respect to the content of this document.