

# SAP Business One Add-On Solution Certification

**SAP Labs, LLC**

**Mustafa Saglam**

## Agenda

- Overview
- Signing up for a new SAP Business One Add-On Solution Certification
- Before the certification test
- Certification Test
- Q & A

## SAP Business One Add-On Solution Certification

- **Certification of 3<sup>rd</sup>-party add-ons for SAP Business One (B1)**
  - ◆ based on the SAP B1 SDK
  - ◆ Code named as B1-SDK Certification

## SAP B1 SDK

Provided by SAP, SAP B1 SDK contains;

- **DI-API – Data Interface API (and the DI Server API)**
  - ◆ Provides bi-directional access to SAP B1 Business Objects (Customer, Material Sales Order, etc. )
- **UI-API – User Interface API**
  - ◆ Allows to build new forms as well as adding new items into the existing ones

## SAP B1 Add-on

Developed by an ISV, SAP B1 Add-On implements DI and/or UI API, and other technologies (ODBC, OLE DB, etc.) to integrate with SAP B1

## Certification Requirements

The requirements for certification is categorized as;

- Technical Requirements
- Functional Requirements
- Stability/Performance Requirements

## Technical requirements

- Defined by SAP
- Outlined in the SAP B1 SDK Certification Test Plan

## Functional and Stability/Performance requirements

- Mutually agreed between SAP and the ISV
- Incorporated into the B1 SDK Certification Test Plan

## Availability

- **SAP B1 Add-On Solution Certification is offered by SAP Integration and Certification Center – ICC**

## Validity

- **Certification of an SAP B1 Add-On is valid as long as SAP and ISV maintain corresponding products (and versions) mentioned in the certification contract**
- **Unless stated otherwise, certification of an add-on is also valid in the future releases of SAP B1.**
  - ◆ **For example, a certified add-on on B1 2004, is considered certified on B1 2005 as well**
- **Recertification is required once the associated ISV product or its version changes**
- **Corrections/Patches do not require recertification**

## Accessibility

- **ISVs (Partners) with the SAP Business One Solution Partnership agreement can download**

- ◆ SAP B1
- ◆ SAP B1 SDK

from the SAP SMB Partner Portal – <http://services.sap.com/smb>

## Support

- **Support for developing and certifying SAP B1 add-ons is provided via;**
  - ◆ SAP Developer Network – SDN <http://sdn.sap.com> → Business One
  - ◆ SAP Online Support System - OSS
  - ◆ Integration and Certification Center

**A partner's integration must be certified in the SAP ICC responsible for the country in which the partner's main agreement relating to SAP Business One was executed.**

**Americas**

**All countries in  
North and South  
America**

**EMEA**

**All countries in  
Europe, the  
Middle East and  
Africa**

**APA**

**All countries in  
Asia and the  
Pacific region**

**ICC Palo Alto**

**Phone +1 650 849 4154  
icc-americas@sap.com**

**ICC Walldorf**

**Phone +49 6227 767600  
icc@sap.com**

**ICC Bangalore**

**Phone +91 80 51396044  
icc-apa@sap.com**

## Agenda

- Overview
- **Signing up for a new SAP Business One Add-On Solution Certification**
- Before the certification test
- Certification Test
- Q & A



## Information on SAP B1 Add-On Solution Certification

- The ISV can learn more about the B1-SDK certification at SAP Developer Network

<http://sdn.sap.com>

→ Integration and Certification Center

→ Integration Scenarios

→ SAP Business One (Under SMB Integrations)

## Pre-requisites

In order to sign up for SAP B1 Certification, an ISV needs to sign

- Solution Partner Agreement
- SDK License and Maintenance Agreement

## Then

- The ISV contacts his SAP Business One Partner Manager to sign the necessary SAP Business One Add-On Solution Certification Contract

## Required information

In order for SAP to prepare the certification contract, ISV emails

- *Name of the product to be integrated:*
- *Version of the product:*
- *Company name and address, as they should be listed in our online directory and the contract after successful certification:*
- *State (or Country) of incorporation of your company (e.g. Delaware, California, Germany etc.):*
- *Contact person and mailing address to send the original paperwork to for signature:*

to his SAP Business One Partner Manager

## Involvement of ICC

- **SAP B1 Partner manager reviews the request and forwards it to the relevant ICC office**
- **ICC prepares and sends the contract paperwork to the ISVs contact person mentioned**

## Signing the certification contract

- **Once signed ISV mails the original contract to the address mentioned in the paperwork**
- **SAP ICC counter signs the contract and assigns an ICC consultant to start working on the certification project**

## Agenda

- Overview
- Starting a new B1-SDK Certification Project
- **Before the certification test**
- Certification Test
- Q & A

# Once the contract signed

## Initial contact

ICC Consultant emails ISV

- Technical Product Profile – TPP
- SAP B1 Add-On Solution Certification Test Plan
- Information on supporting documents development resources, etc.

## Project Kick-off call

ICC consultant sets up a phone call with the ISV to;

- Describe the next steps
- Understand the readiness of the ISV's add-on
- Answer any questions that the ISV might have

## SAP Business One Test Environment

- SAP Business One Test Environment (B1TE) can be downloaded from SAP Developer Network
  - ◆ <http://sdn.sap.com> → Business One

## Technical Product Profile - TPP

TPP collects information on the following topics;

- Administrative Information – Names, versions etc.
- Technical Information
- Documentation of the Add-On
- Quality Assurance Process of ISV
- Functional, Performance/Load Test Cases
- ...

## TPP Review

ICC consultant reviews the completed TPP to;

- Request ISV to complete any missing information
- Recommend changes and/or agree on
  - ◆ Functional Test Cases
  - ◆ Performance/Load Test Cases (if applicable)

## Agenda

- Overview
- Starting a new B1-SDK Certification Project
- Before the certification test
- **Certification Test**
- Q & A

## Before the test day

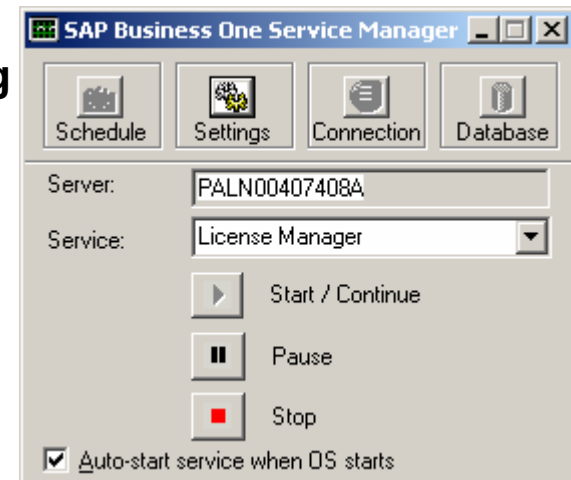
### ISV

- **Installs SAP Business One System**
  - ◆ Based on the version mentioned in the certification contract
- **Applies recent patch level**
  - ◆ As agreed with the ICC consultant
- **Installs B1TE**
- **Optionally** if the ISV utilizes the licensing mechanism in SAP Business One
  - ◆ Creates two solution licenses
  - ◆ In order to create license key, an add-on must be registered
    - URL for registering an add-on  
[http://service.sap.com/sap/bc/bsp/spn/reg\\_addon/regaddon.htm](http://service.sap.com/sap/bc/bsp/spn/reg_addon/regaddon.htm)
    - URL for creating the license key  
<http://service.sap.com/smb> → “License Key Request”  
under the product SAP Business One – **not mySAP All-in-One**



## At the beginning of the test

- **ICC consultant provides the link to a clean SAP Business One database (MS SQL Server)**
  - ◆ Ensures a clean test environment
  - ◆ Contains the necessary changes for B1 DB Profiler
- **ISV**
  - ◆ downloads the .zip file and extracts the DB backup file
  - ◆ Restores the database over his/her existing SBODemo\_US database
    - Using MS SQL Server Enterprise Manager
    - Ensure that there is no connection made to the database before starting the restore – B1 should also be down
  - ◆ **Optionally** if the ISV utilizes the licensing mechanism in SAP Business One; Installs (imports) the license file
    - Using the B1 Service Manager
      - License Manager → Settings



## Test Plan

### ■ Technical Requirements

- ◆ Install / Uninstall
- ◆ Licensing (Optional)
- ◆ Advanced Database Objects
- ◆ Modifying SAP Business One Data
- ◆ Exception / Error handling
- ◆ Compliance with SDK guidelines
- ◆ Documentation of event handlers
- ◆ Compliance with Screen Design Guidelines
- ◆ Extending SAP Business One GUI

### ■ Functional Requirements

- ◆ Mutually agreed between SAP and the ISV

### ■ Stability/Performance Requirements

- ◆ Mutually agreed between SAP and the ISV – if applicable

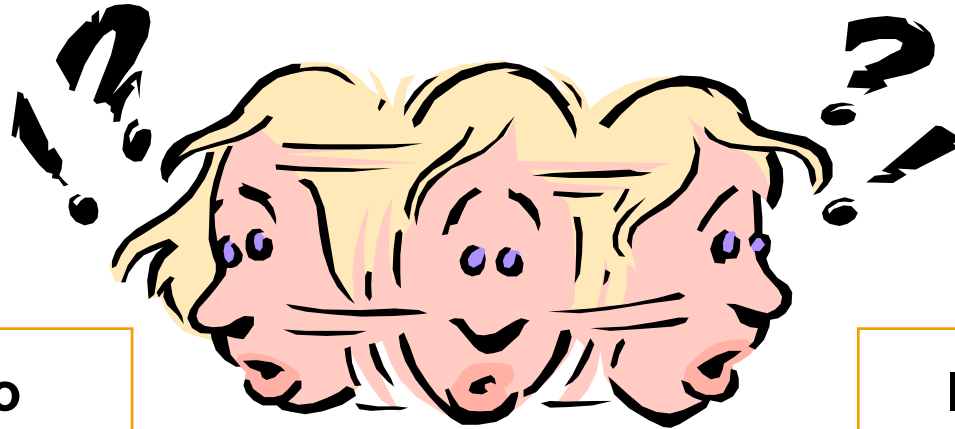
## SAP Business One Test Environment – B1TE

- **B1 DB Browser**
  - ◆ Table schema verifier
- **B1 .NET Profiler**
  - ◆ Traces calls to SAP B1 and any other .NET objects
  - ◆ Only for add-ons written in MS .NET
- **B1 DB Profiler**
  - ◆ Verifies calls to DI API Objects
- **MS SQL Profiler**
  - ◆ Verifies connections, and DB operations
- **B1 Bubble Checker**
  - ◆ Verifies the propagation of events within an Add-On
- **B1 Form Checker**
  - ◆ Verifies forms contained in add-on
- **Detailed documentation on B1TE is included with its installation**
  - ◆ B1TE together with its source code is available on SDN

## Agenda

- Overview
- Starting a new B1-SDK Certification Project
- Before the certification test
- Certification Test
- Q & A

# Questions?



**ICC Palo Alto**  
Phone +1 650 849 4154  
icc-americas@sap.com

**ICC Walldorf**  
Phone +49 6227 767600  
icc@sap.com

**ICC Bangalore**  
Phone +91 80 51396044  
icc-apa@sap.com

**ICC @ SDN**  
<http://sdn.sap.com> → Integration and Certification Center

- No part of this publication may be reproduced or transmitted in any form or for any purpose without the express permission of SAP AG. The information contained herein may be changed without prior notice.
- Some software products marketed by SAP AG and its distributors contain proprietary software components of other software vendors.
- Microsoft, Windows, Outlook, and PowerPoint are registered trademarks of Microsoft Corporation.
- IBM, DB2, DB2 Universal Database, OS/2, Parallel Sysplex, MVS/ESA, AIX, S/390, AS/400, OS/390, OS/400, iSeries, pSeries, xSeries, zSeries, z/OS, AFP, Intelligent Miner, WebSphere, Netfinity, Tivoli, and Informix are trademarks or registered trademarks of IBM Corporation in the United States and/or other countries.
- Oracle is a registered trademark of Oracle Corporation.
- UNIX, X/Open, OSF/1, and Motif are registered trademarks of the Open Group.
- Citrix, ICA, Program Neighborhood, MetaFrame, WinFrame, VideoFrame, and MultiWin are trademarks or registered trademarks of Citrix Systems, Inc.
- HTML, XML, XHTML and W3C are trademarks or registered trademarks of W3C®, World Wide Web Consortium, Massachusetts Institute of Technology.
- Java is a registered trademark of Sun Microsystems, Inc.
- JavaScript is a registered trademark of Sun Microsystems, Inc., used under license for technology invented and implemented by Netscape.
- MaxDB is a trademark of MySQL AB, Sweden.
- SAP, R/3, mySAP, mySAP.com, xApps, xApp, SAP NetWeaver and other SAP products and services mentioned herein as well as their respective logos are trademarks or registered trademarks of SAP AG in Germany and in several other countries all over the world. All other product and service names mentioned are the trademarks of their respective companies. Data contained in this document serves informational purposes only. National product specifications may vary.
- These materials are subject to change without notice. These materials are provided by SAP AG and its affiliated companies ("SAP Group") for informational purposes only, without representation or warranty of any kind, and SAP Group shall not be liable for errors or omissions with respect to the materials. The only warranties for SAP Group products and services are those that are set forth in the express warranty statements accompanying such products and services, if any. Nothing herein should be construed as constituting an additional warranty.