

How to Run the Visual Composer Resource Center Applications

Applies to:

SAP NetWeaver Visual Composer.

Summary

This guide describes the tasks you need to perform to run the Visual Composer Resource Center applications in your portal.

Company: SAP

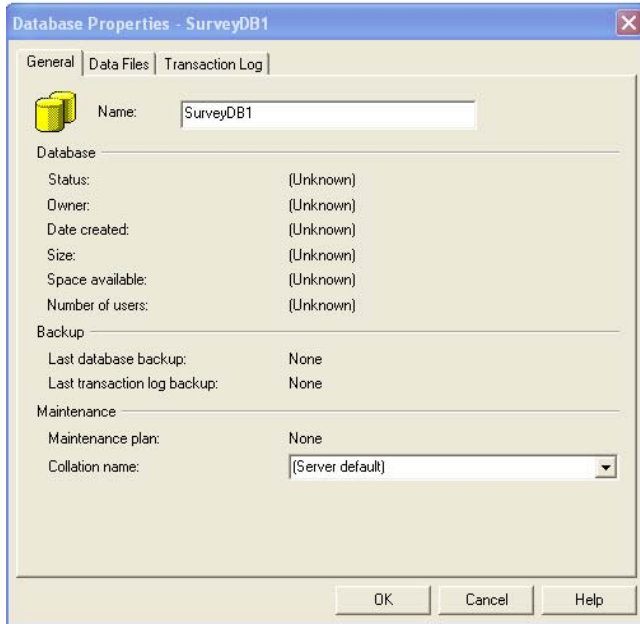
Created on: 24 December 2006

Table of Contents

Applies to:	1
Summary.....	1
Creating the SQL Server Database	3
Creating the JDBC connection	5
Importing the attached Visual Composer model files Content	9
Running the application	9

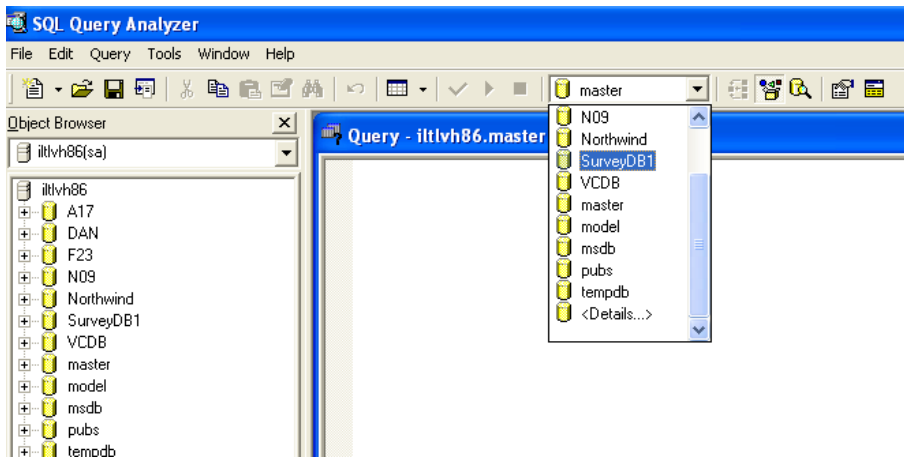
Creating the SQL Server Database

- 1.1. Download the required package from Visual Composer Modeling Resource Center to your computer and extract the files.
- 1.2. Open the SQL Server Enterprise Manager, right-click the Databases folder, and choose New Database.

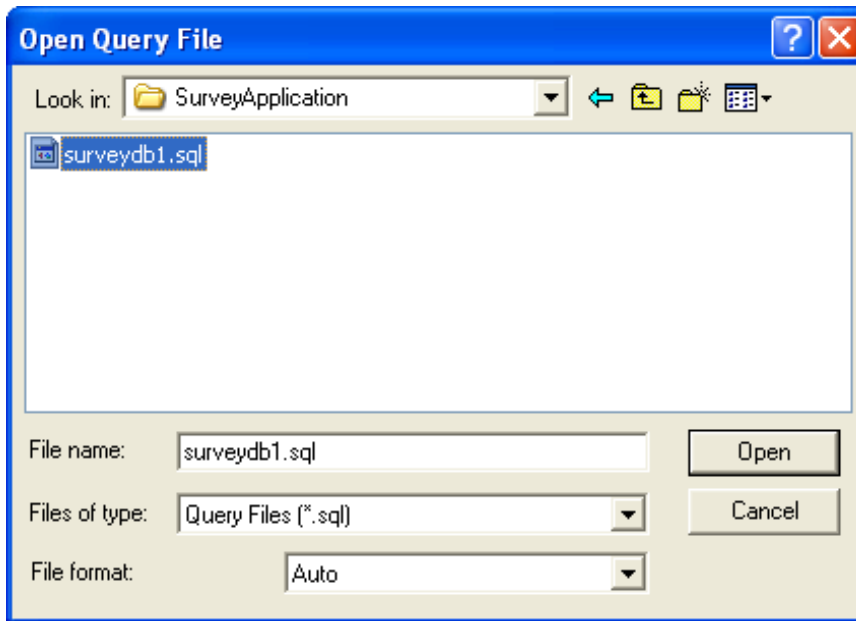


- 1.3. Enter the database name, and click OK.

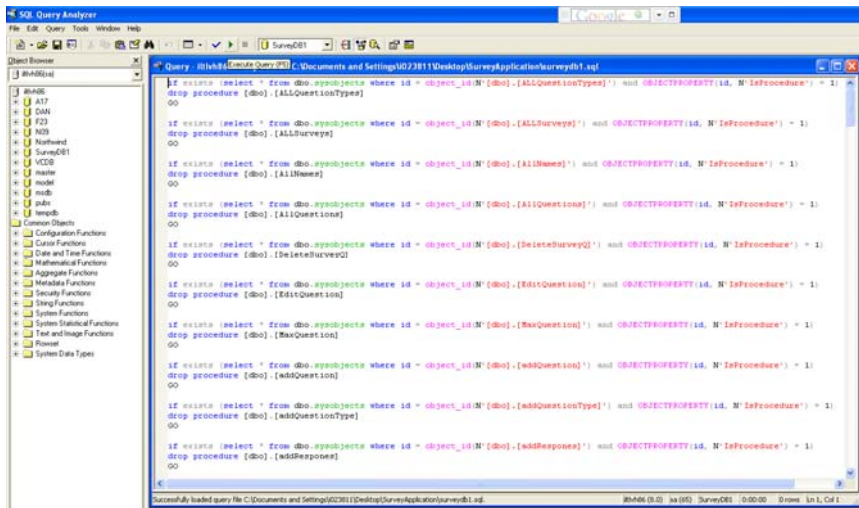
1.4. Open SQL Query Analyzer and choose the new database from the dropdown list.



1.5. Load the SQL script.

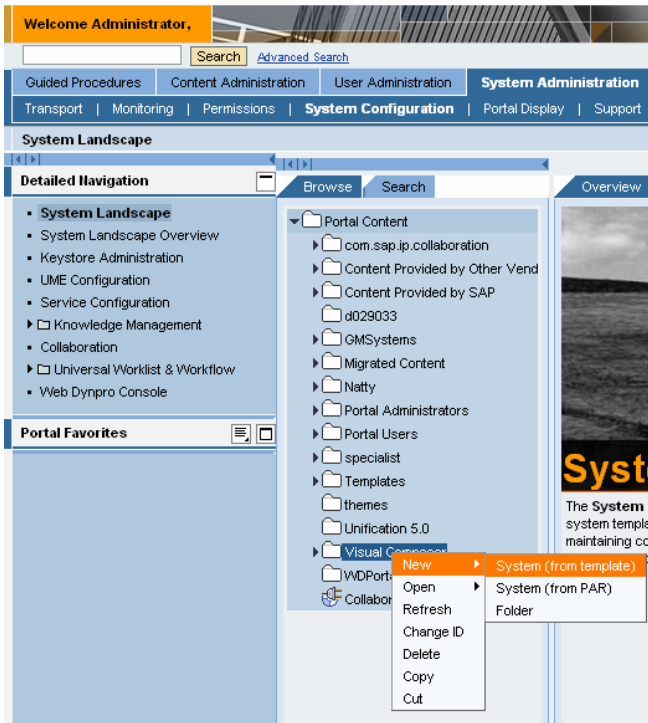


1.6. Run the script pressing F5 or by clicking the green arrow.

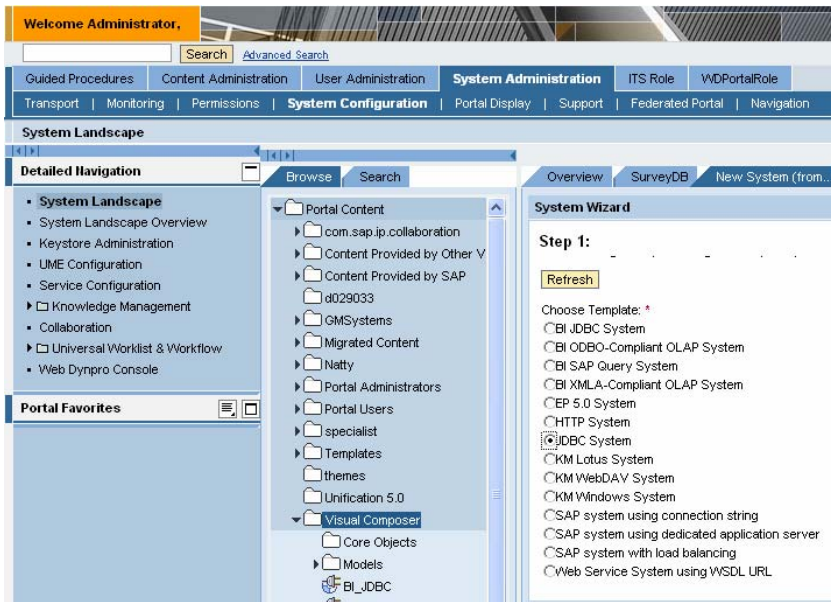


Creating the JDBC connection

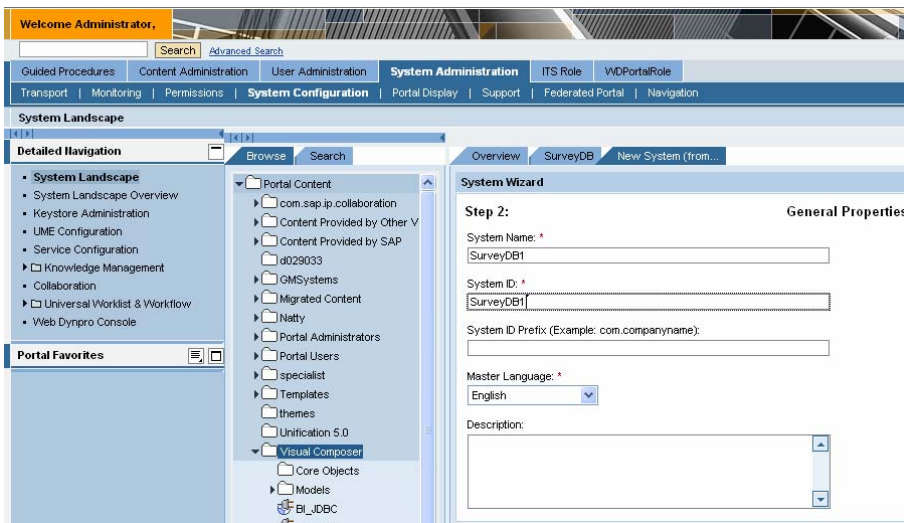
- 2.1. Log in to your portal and from the top-level navigation; choose System Administration -> System Configuration -> System Landscape.
- 2.2. In the Portal Catalog, right-click a folder in which to create the new system and choose New → System (from template)



2.3. Choose JDBC System.



2.4. Enter the System name and System ID and click Next.



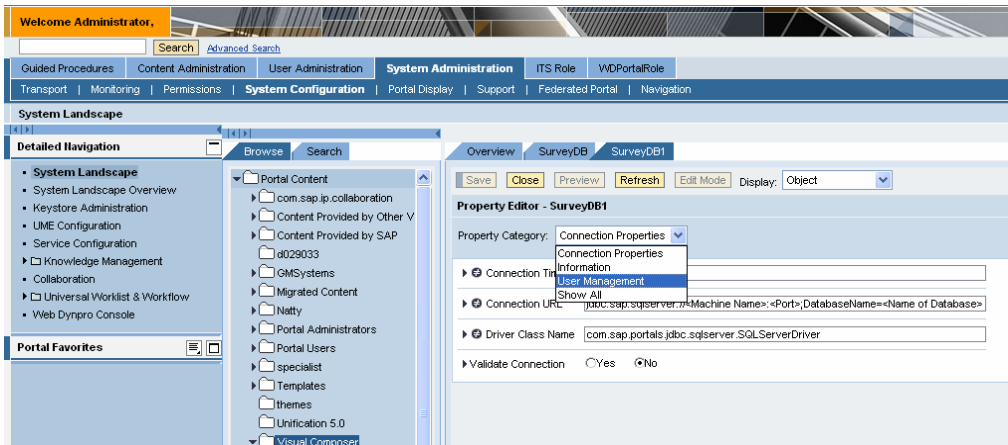
2.5. Choose connection properties and fill in the Connection URL and Driver fields in the following way:

2.5.1. Connection URL: `jdbc:sap:sqlserver://<Machine Name>:<Port>;DatabaseName=<Name of Database>`

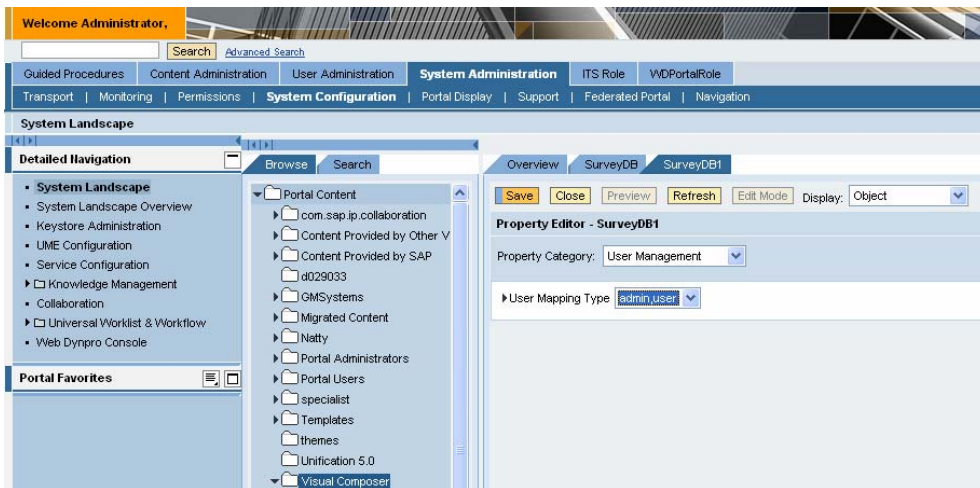
2.5.2. DRIVER: `com.sap.portals.jdbc.sqlserver.SQLServerDriver`

2.6. Save the changes.

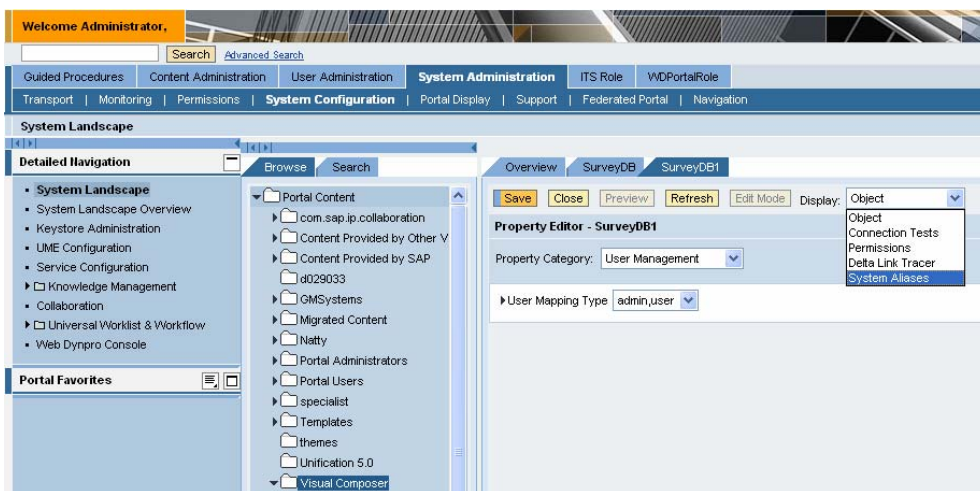
2.7. Select User Management from the Property Category drop-down list.



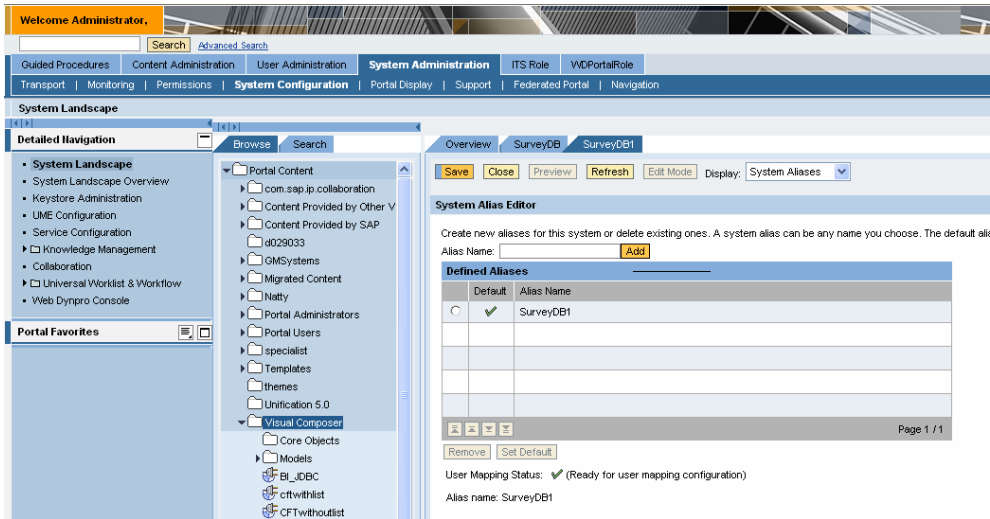
2.8. Select *admin, user* in the User Mapping Type. (User Mapping has to be added for the application alias, you should map your portal user to the data base user with access rights to the application data base).



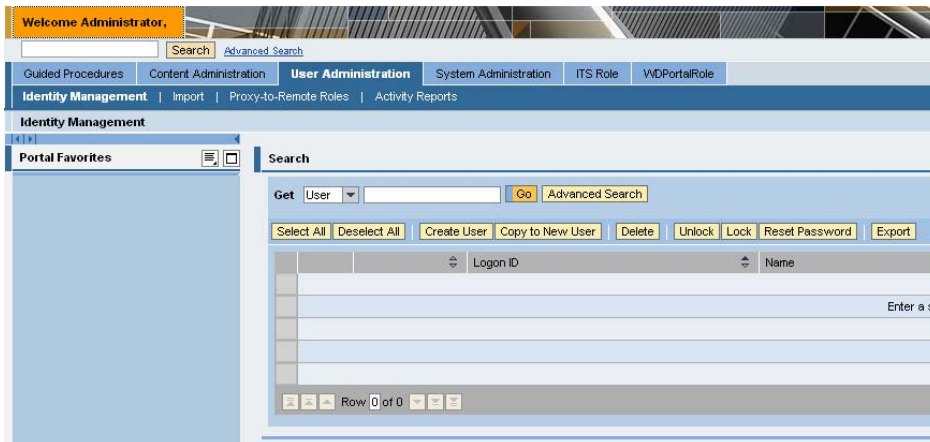
2.9. Choose System Aliases from the Display drop-down list.



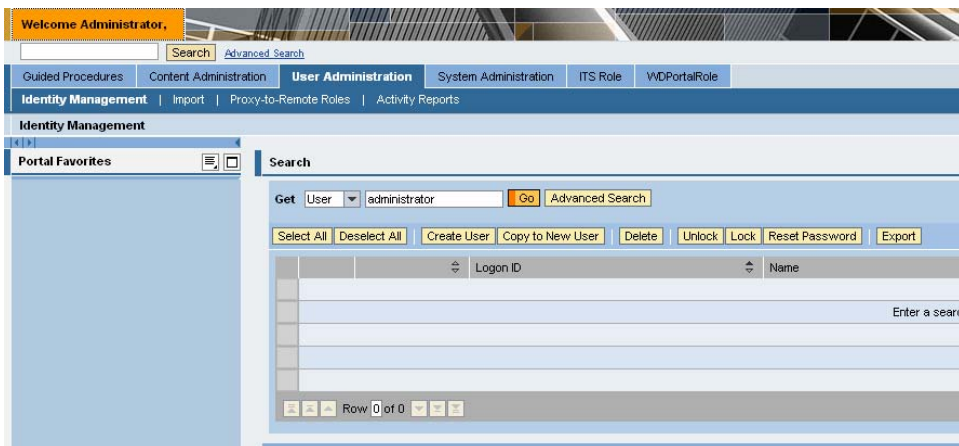
- 2.10. In the Alias Name field enter the application alias and click the add button to add the system alias to the “Defined Aliases” table. Click Save.



- 2.11. From top-level navigation, choose User Administration → Identity Management.

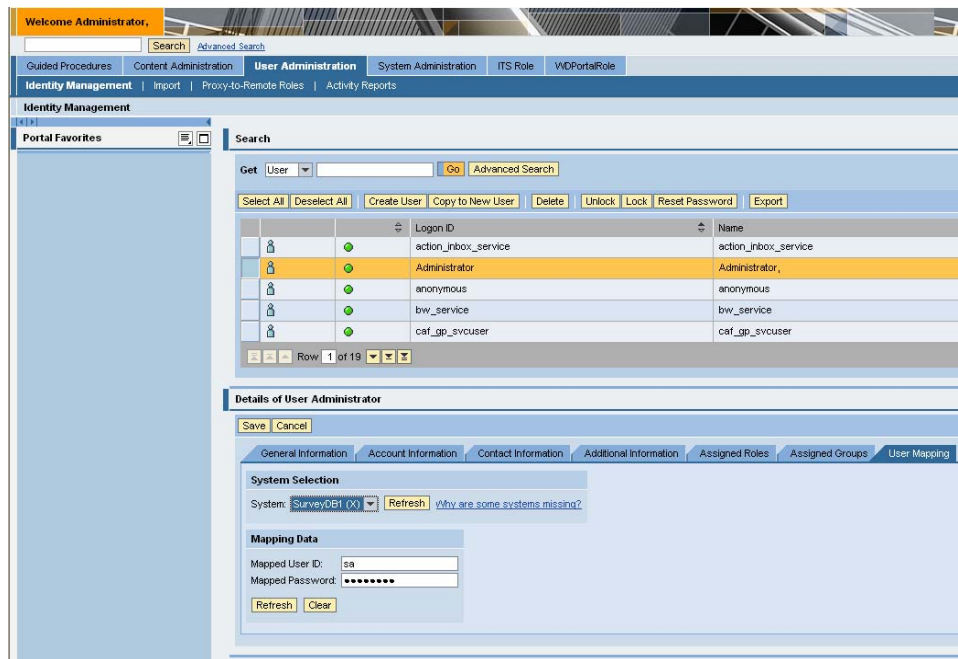


- 2.12. Search for the administrator user (this is the user who will use the system), by entering administrator in the input field and clicking Go.



- 2.13. From the results list, select the administrator user, click the modify button and select the User Mapping tab in the Details of User Administrator.

- 2.14. In the System selection drop-down list, select the application alias and add your database User ID and Password.
- 2.15. Click Save.



Importing the attached Visual Composer model files Content

- 3.1. Log in to your Visual Composer system.
- 3.2. Create a new Visual Composer model by choosing Model → New Model. The Create a New Model dialog box is displayed.
- 3.3. In the Name field, enter the application name and click OK.
- 3.4. Import the model by choosing Model → Import from File. The Import from File dialog box is displayed.
- 3.5. Use the Look In drop-down list to navigate to the model that you want to import and click Open. The file path and name are displayed in the text.
- 3.6. Do one of the following:
 - * Select the Merge imported package into this diagram checkbox to merge the contents of the imported model with the other model elements in the open diagram.
 - * Leave the checkbox unselected to import the model contents within a package (folder) so that you can drill down into the imported package and manipulate the model separately.
- 3.7. Click OK.

Running the application

To run the application, drill down to the iView and deploy it to your portal.