

# Using Customer Exit Variables in BW/BI Reports: Part - 8



## Applies to:

SAP NetWeaver Business Warehouse (Formerly BI), Will also work on SAP BI 3.5. [EDW homepage](#).

## Summary

This article gives clear picture about how to use Characteristic Customer Exit Variables in SAP-BW/BI Reports.

**Author:** Surendra Kumar Reddy Koduru

**Company:** ITC Infotech India Ltd. (Bangalore/INDIA)

**Created on:** 31 May 2011

## Author Bio



Surendra Kumar Reddy Koduru is a SAP BI Lead Consultant currently working with ITC Infotech India Ltd (Bangalore/INDIA). He has got rich experience and worked on various BW/BI Implementation/Support Projects and he is the author for various Articles and Blogs (SAP-BW/BI) in SAP Community Network.

## Table of Contents

|                                      |    |
|--------------------------------------|----|
| Introduction: .....                  | 3  |
| Live Scenario: .....                 | 3  |
| Steps:.....                          | 3  |
| Code: .....                          | 6  |
| Code Explanation:.....               | 9  |
| Report Designer:.....                | 9  |
| Selection Screen:.....               | 12 |
| Report Result: .....                 | 13 |
| Related Content .....                | 15 |
| Disclaimer and Liability Notice..... | 16 |

## Introduction:

This article addresses the requirement of Customer Exit variables in BW/BI Reports; in this article I'm explaining the following scenario...

How to use the Characteristic Customer Exit Variables in BW/BI Reports, how to display the data for First and Last date (Range) of the Fiscal Year based on User Input Fiscal Year.

## Live Scenario:

In some of the SAP-BI/BW reports, users want to see the Sales revenue data for the First and Last date (Range) of the Fiscal Year based on Users Input Fiscal Year.

## Steps:

**Create Customer Exit Variable ZDATE\_RC on 0CALDAY.  
For reference look into the following screens.**

**Change Variable**

Advanced

General Replacement Path Details Default Values Currency/Unit

**Description**

Calday

Use Standard Text

**Technical Name**

ZDATE\_RC

**Global Settings**

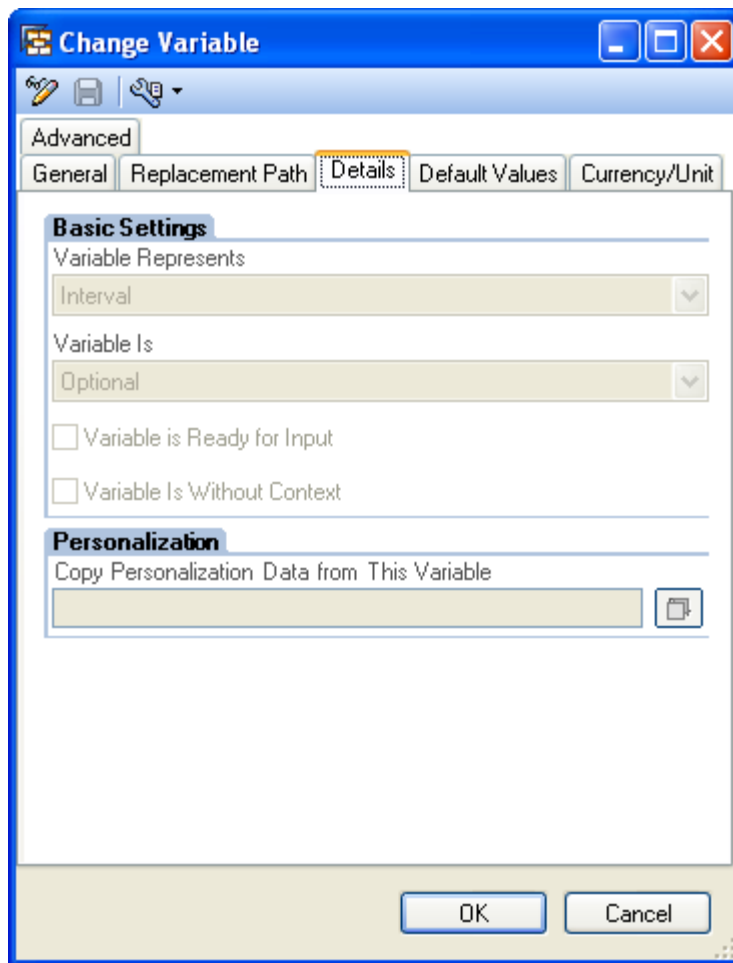
Type of Variable  
Characteristic Value

Processing By  
Customer exit

Reference Characteristic  
[0CALDAY] Calendar day

Last Changed  
Owner: DEV\_CAT2  
Last Changed By: DEV\_CAT2  
Date/Time: 5/31/2011 11:20:38 PM

OK Cancel



**Create User Entry Variable ZFYR\_U on 0FISCYEAR.  
For reference look into the following screens.**

**Change Variable**

Advanced

General Replacement Path Details Default Values Currency/Unit

**Description**

Fiscal Year

Use Standard Text

**Technical Name**

ZFYR\_U

**Global Settings**

Type of Variable  
Characteristic Value

Processing By  
Manual Input/Default Value

Reference Characteristic  
[0FISCYEAR] Fiscal year

Last Changed  
Owner: DEV\_CAT2  
Last Changed By: DEV\_CAT2  
Date/Time: 5/31/2011 11:15:52 PM

OK Cancel

**Change Variable**

Advanced

General Replacement Path Details Default Values Currency/Unit

**Basic Settings**

Variable Represents  
Single value

Variable Is  
Mandatory

Variable is Ready for Input  
 Variable Is Without Context

**Personalization**

Copy Personalization Data from This Variable

OK Cancel

Code:

Goto **CMOD** TCode in SAP-BW/BI and then give your Project Name and click on Change button.

The screenshot shows the SAP Project Management of SAP Enhancements interface. At the top, there is a menu bar with 'Project', 'Edit', 'Goto', 'Utilities(M)', 'Environment', 'System', and 'Help'. Below the menu bar is a toolbar with various icons. The main title is 'Project Management of SAP Enhancements'. Below the title, there are several icons. The 'Project' field contains 'ZBW' and the 'Create' button is visible. The 'Subobjects' section has radio buttons for 'Attributes', 'Enhancement Assignment', 'Components', and 'Documentation'. The 'Change' button is highlighted.

Click on **Components**

The screenshot shows the SAP Attributes of Enhancement Project ZBW interface. At the top, there is a menu bar with 'Project', 'Edit', 'Goto', 'Environment', 'System', and 'Help'. Below the menu bar is a toolbar with various icons. The main title is 'Attributes of Enhancement Project ZBW'. Below the title, there are two buttons: 'Enhancement assignments' and 'Components'. The 'Components' button is highlighted with a red box. Below the buttons, the 'Project' field contains 'ZBW' and the 'Short text' field contains 'For BW Enhancements'. At the bottom, there is a section for 'Administration data'.

Double Click on **EXIT\_SAPLRRS0\_001**

| Project       |      |     | ZBW               | For BW Enhancements                             |
|---------------|------|-----|-------------------|---|
| Enhancement   | Impl | Exp | RSR00001          | BW: Enhancements for global variables in report |
| Function exit | ✓    |     | EXIT_SAPLRRS0_001 |   |

Double Click on **INCLUDE ZXRSRU01**.

```

FUNCTION EXIT_SAPLRRS0_001.
*-----
**"Lokale Schnittstelle:
**  IMPORTING
**    VALUE(I_VNAM) LIKE  RSZGLOBV-VNAM
**    VALUE(I_VARTYP) LIKE RSZGLOBV-VARTYP
**    VALUE(I_IOBJNM) LIKE RSZGLOBV-IOBJNM
**    VALUE(I_S_COB_PRO) TYPE  RSD_S_COB_PRO
**    VALUE(I_S_RKB1D) TYPE  RSR_S_RKB1D
**    VALUE(I_PERIV) TYPE  RR001_S_RKB1F-PERIV
**    VALUE(I_T_VAR_RANGE) TYPE  RRS0_T_VAR_RANGE
**    VALUE(I_STEP) TYPE  I DEFAULT 0
**  EXPORTING
**    VALUE(E_T_RANGE) TYPE  RSR_T_RANGESID
**    VALUE(E_MEEHT) LIKE  RSZGLOBV-MEEHT
**    VALUE(E_MEFAC) LIKE  RSZGLOBV-MEFAC
**    VALUE(E_WAERS) LIKE  RSZGLOBV-WAERS
**    VALUE(E_WHFAC) LIKE  RSZGLOBV-WHFAC
**  CHANGING
**    VALUE(C_S_CUSTOMER) TYPE  RR004_S_CUSTOMER OPTIONAL
**-----
INCLUDE ZXRSRU01 .

ENDFUNCTION.

```

Write the following Code in the ABAP Editor in ECC:

```

*&-----*
*&  Include           ZXRSRU01
*&-----*

DATA : l_s_range TYPE rsr_s_rangesid,
       loc_var_range LIKE rrrangeexit,
       zbdattj LIKE t009b-bdattj,
       zbuper LIKE t009b-poper,
       zpoper LIKE t009b-poper,
       ZGJAHR LIKE T009B-BDATTJ.

DATA : ZDT TYPE SY-DATUM,
       ZFDT TYPE SY-DATUM,
       ZLDT TYPE SY-DATUM.

CASE i_vnam.

WHEN 'ZDATE_RC'.
  IF i_step = 2.
    LOOP AT i_t_var_range INTO loc_var_range WHERE vnam = 'ZFYR_U'.
      CLEAR: l_s_range.

      ZGJAHR = loc_var_range.

      CALL FUNCTION 'FIRST_AND_LAST_DAY_IN_YEAR_GET'
        EXPORTING
          I_GJAHR          = ZGJAHR
          I_PERIV          = 'V3'
        IMPORTING
          E_FIRST_DAY     = ZFDT
          E_LAST_DAY      = ZLDT
        *
        * EXCEPTIONS
        *   INPUT_FALSE      = 1
        *   T009_NOTFOUND    = 2
        *   T009B_NOTFOUND   = 3
        *   OTHERS           = 4
        .

      IF SY-SUBRC <> 0.
        *   MESSAGE ID SY-MSGID TYPE SY-MSGTY NUMBER SY-MSGNO
        *   WITH SY-MSGV1 SY-MSGV2 SY-MSGV3 SY-MSGV4.
      ENDIF.

      l_s_range-low = ZFDT.
      l_s_range-HIGH = ZLDT.
      l_s_range-sign = 'I'.
      l_s_range-opt = 'EQ'.
      APPEND l_s_range TO e_t_range.
    ENDLOOP.
  ENDIF.

```



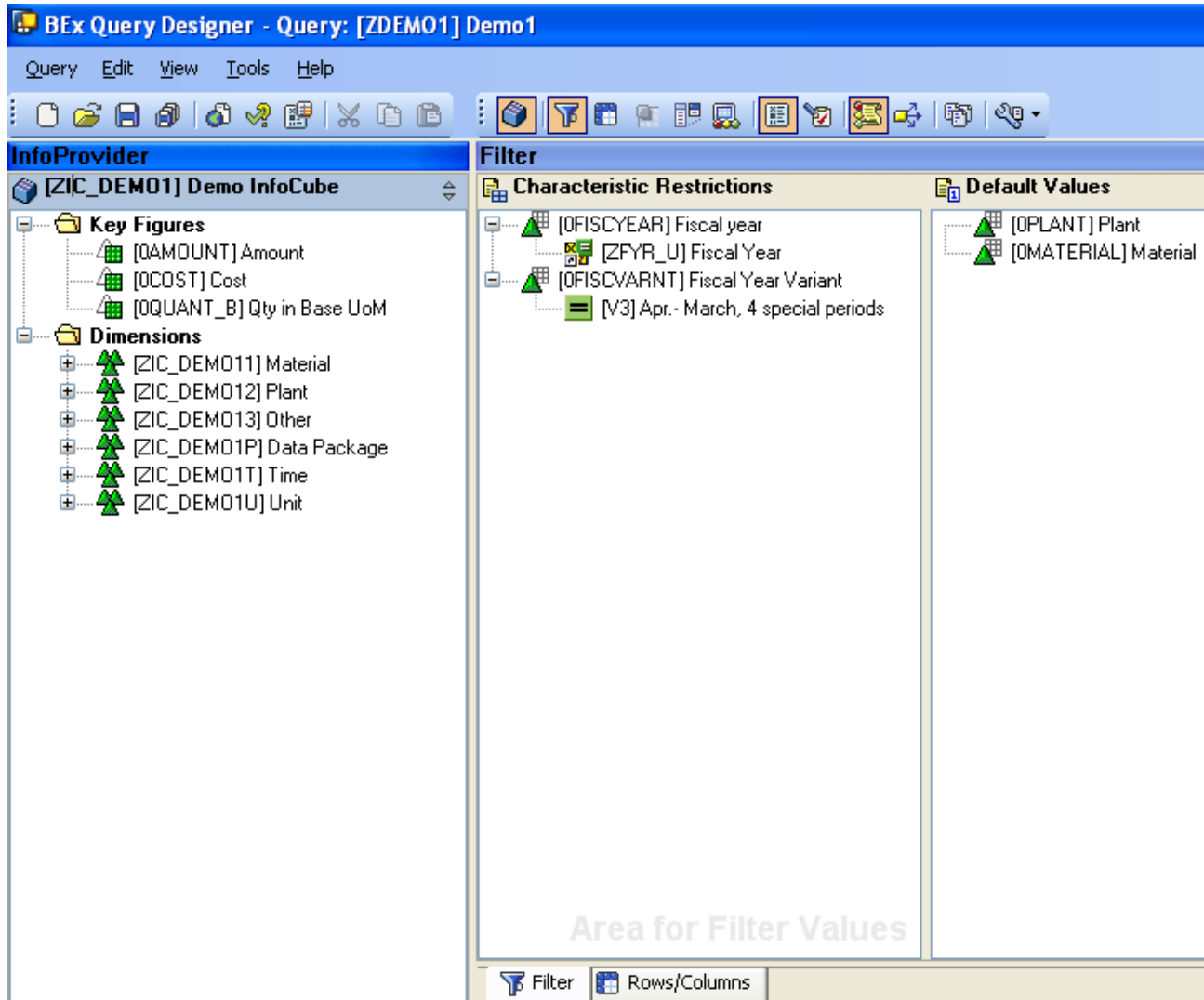
ENDCASE.

**Save** and **Activate** the above code and project.

Code Explanation:

The Function Module 'FIRST\_AND\_LAST\_DAY\_IN\_YEAR\_GET' will take Fiscal Year and Fiscal Year Variant as input, and it will give the First and Last date (Range) of that Fiscal year.

Report Designer:



**BEx Query Designer - Query: Demo1 [ZDEMO1]**

Query Edit View Tools Help

InfoProvider: Demo InfoCube [ZIC\_DEMO1]

Key Figures: Amount [QAMOUNT], Cost [OCOST], Qty in Base UoM [OQUANT\_]

Dimensions: Material [ZIC\_DEMO11], Plant [ZIC\_DEMO12], Other [ZIC\_DEMO13], Data Package [ZIC\_DEMO1], Time [ZIC\_DEMO1T], Unit [ZIC\_DEMO1U]

Rows/Columns: Free Characteristics

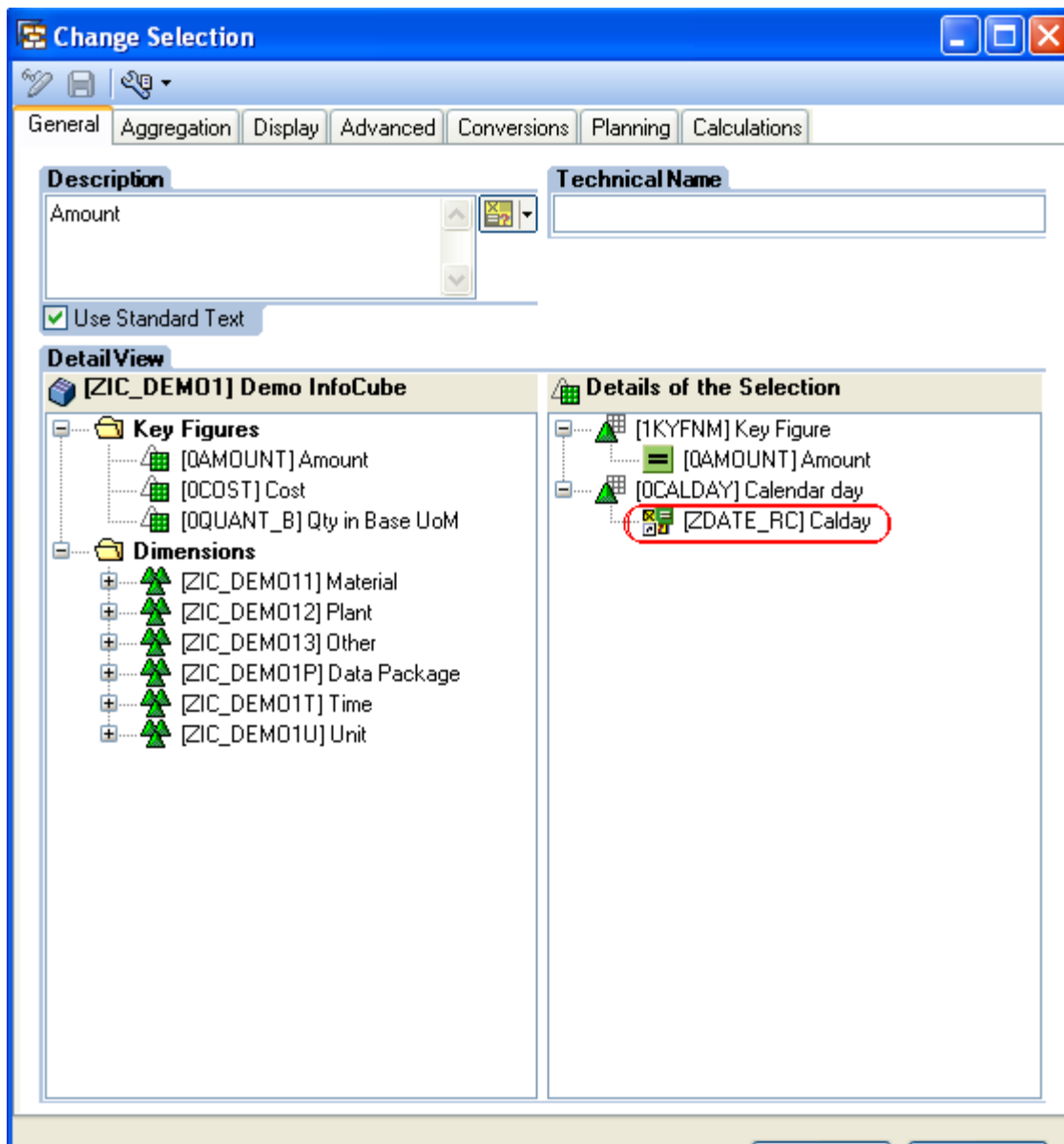
Columns: Key Figures, Amount

Rows: Material [DMATERIAL], Plant [OPLANT]

Preview:

|            |         | Amount |
|------------|---------|--------|
| a-Material | a-Plant |        |
|            | b-Plant |        |
| b-Material | a-Plant |        |
|            | b-Plant |        |

Filter Rows/Columns

**In Filters:**

Drag & Drop 0FISCVARNT, 0FISCYEAR and restrict 0FISCVARNT with "V3" (as per India) and 0FISCYEAR with ZFYR\_U User Input Variable.

**In Rows:**

Drag and Drop Material and Plant.

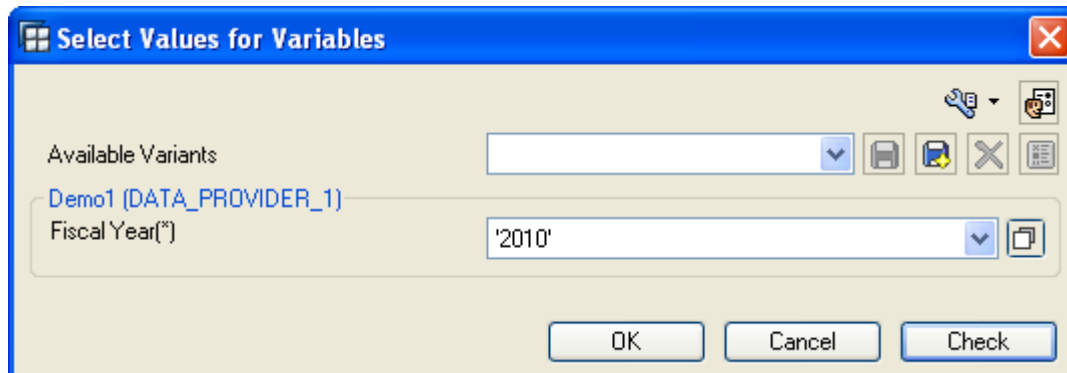
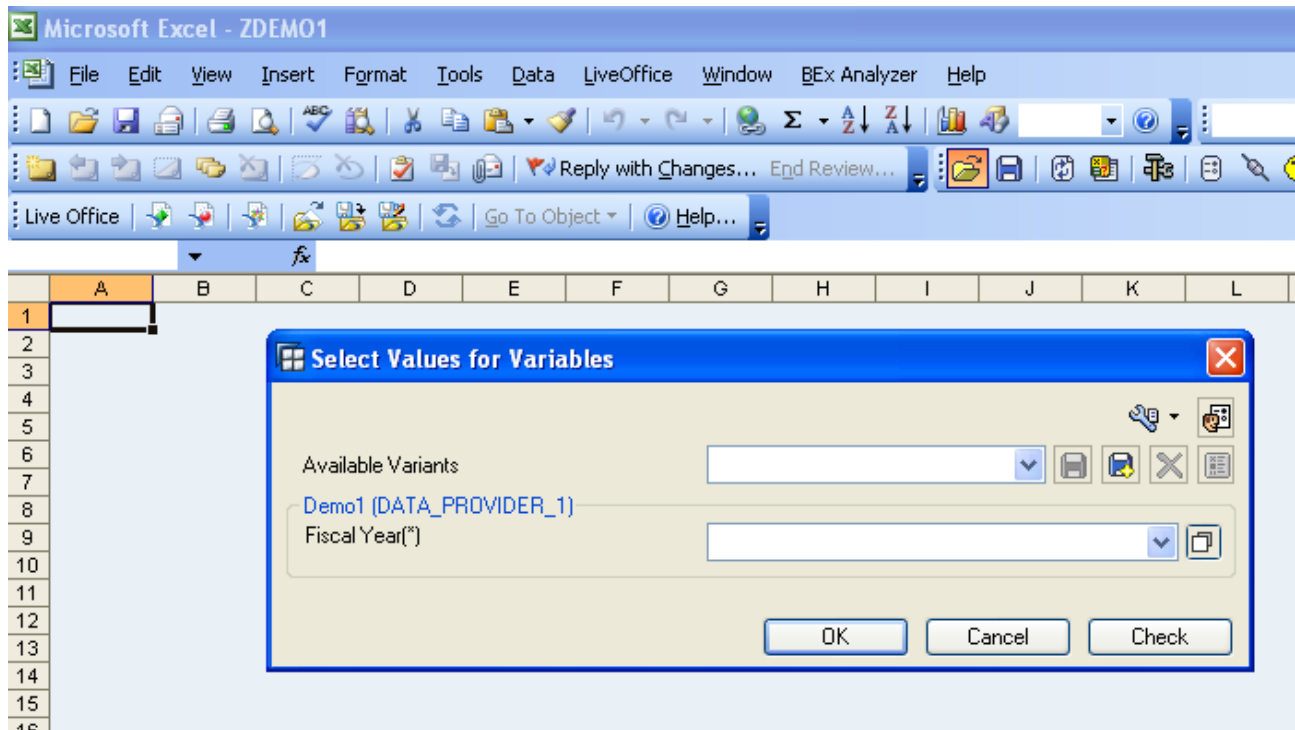
**In Columns:**

Create New Selection and Drag and Drop Amount and 0CALDAY, restrict 0CALDAY with ZDATE\_RC Variable like above.

**Save and Execute the Report :**

Selection Screen:

Once you execute the report you can see the following selection screen:



## Report Result:

**See the following Report Result:**

Here the result is displayed From 01.04.2010 To 31.03.2011, because in 2010 Fiscal Year ,First and Last date (Range) is 01.04.2010 – 31.03.2011.

**Microsoft Excel - Demo1**

File Edit View Insert Format Tools Data LiveOffice Window BEx Analyzer Help

100% Arial

Live Office Go To Object Help...

M10

**Demo1**

Author SURI2444 Status of Data 5/31/2011 10:15

Chart Filter Information

**Information**

|               |           |           |                 |
|---------------|-----------|-----------|-----------------|
| Author        | SURI2444  | Last Refr | 5/31/2011 23:45 |
| Current User  | DEV_CAT2  | Key Date  | 5/31/2011       |
| Last Changed  | DEV_CAT2  | Changed   | 5/31/2011 23:29 |
| InfoProvider  | ZIC_DEMO1 | Status of | 5/31/2011 10:15 |
| Query Techni  | ZDEMO1    | Relevanc  | 5/31/2011       |
| Query Descrip | Demo1     | Relevanc  | 0:15:10         |

**Filter**

|             |  |
|-------------|--|
| Key Figures |  |
| Material    |  |
| Plant       |  |

**Table**

| Material | Plant | Amount        |
|----------|-------|---------------|
| M100     | P100  | 1,200.00 INR  |
| M1000    | P192  | 12,000.00 INR |
| M1001    | P193  | 12,012.00 INR |
| M1002    | P194  | 12,024.00 INR |
| M1003    | P195  | 12,036.00 INR |
| M1004    | P196  | 11,044.00 INR |
| M1005    | P197  | 11,055.00 INR |
| M1006    | P198  | 7,042.00 INR  |

See the below Image from RSRT, i.e. execute the report in RSRT then see Input and Output like below.

| Text symbols:          |                                |
|------------------------|--------------------------------|
| Description            | Value                          |
| Fiscal Year            | 2010                           |
| Calday                 | 01.04.2010..31.03.2011         |
| Author                 | SURI2444                       |
| Last Changed By        | DEV_CAT2                       |
| InfoProvider           | ZIC_DEM01                      |
| Query Technical Name   | ZDEM01                         |
| Query Description      | Demo1                          |
| Key Date               | 31.05.2011                     |
| Changed At             | 31.05.2011 23:29:19            |
| Current User           | DEV_CAT2                       |
| Last Refreshed         | 31.05.2011 23:46:38            |
| Status of Data         | 31.05.2011 10:15:10            |
| Relevance of Data (Da) | 31.05.2011                     |
| Relevance of Data (Ti) | 10:15:10                       |
| Calendar day           | 01.04.2010..31.03.2011         |
| Fiscal Year Variant    | Apr.- March, 4 special periods |
| Fiscal year            | V3/2010                        |

## Related Content

[Using Customer Exit Variables in BW Reports Part - 4](#)

[Using Customer Exit Variables in BW Reports Part - 3](#)

[How to use Customer Exit Variables in BW Reports: Part - 2](#)

[Using Customer Exit Variables in BW or BI Reports Part - 1](#)

[Using Text Variables with Customer Exits in Report Headings](#)

[Using Text Variables with Customer Exits in Report Headings](#)

[Variables of Type Customer Exit](#)

## Disclaimer and Liability Notice

This document may discuss sample coding or other information that does not include SAP official interfaces and therefore is not supported by SAP. Changes made based on this information are not supported and can be overwritten during an upgrade.

SAP will not be held liable for any damages caused by using or misusing the information, code or methods suggested in this document, and anyone using these methods does so at his/her own risk.

SAP offers no guarantees and assumes no responsibility or liability of any type with respect to the content of this technical article or code sample, including any liability resulting from incompatibility between the content within this document and the materials and services offered by SAP. You agree that you will not hold, or seek to hold, SAP responsible or liable with respect to the content of this document.