

Applies to:

Enterprise portal, NWDS.

Summary

In this article we are going to see how to implement the hover menu on portal TLN. For this hover application we are going to create a PAR file in NWDS and use standard hover function that is available freely. A **css** file will control the coloring and navigation scheme. However, once deployed, this PAR will not use the std. portal theme.

Author: Ameya Subhash Pimpalgaonkar

Company: L&T Infotech

Created on: 27 February 2008

Author Bio



Ameya Subhash Pimpalgaonkar is an Enterprise Portal Consultant at L&T Infotech.

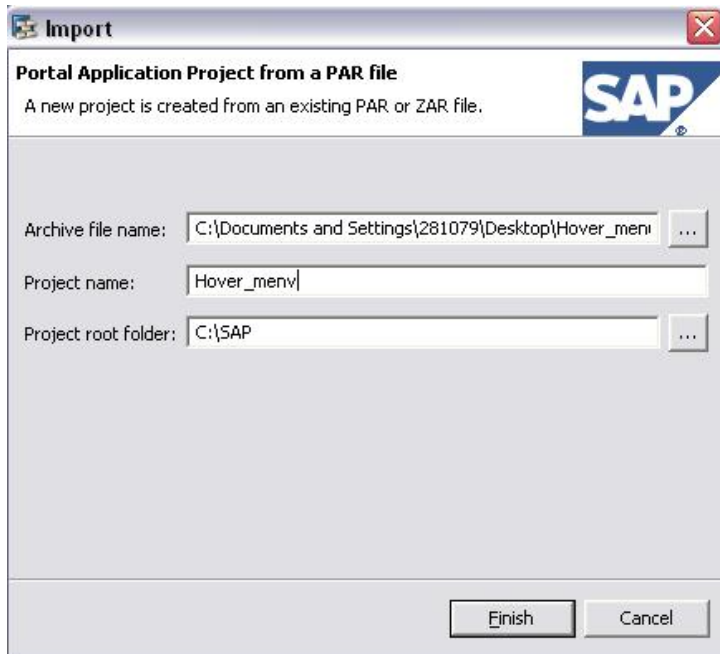
Table of Contents

Getting Started:.....	3
Creating iview from PAR:.....	6
Related Content.....	8
Disclaimer and Liability Notice.....	9

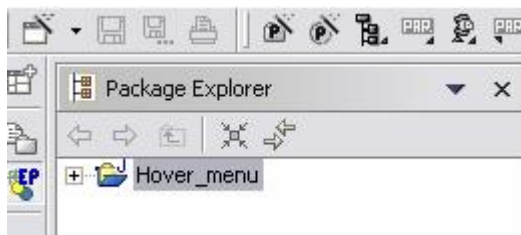
Getting Started:

Launch Netweaver developer studio, and open EP perspective.

Now import the [PAR file](#), create new project, and give project name as Hover_menu.



Once imported this will show your project created.



Now you just have to import this PAR on your portal server.

Now click on export PAR icon 

Configure your server settings



The image shows a dialog box titled "Add New Server Settings" with a close button (X) in the top right corner. The dialog contains five input fields and two buttons. The fields are labeled "Alias:", "Host:", "Port:", "Login:", and "Description:". The "Alias:" field contains the text "<alias>", "Host:" contains "<Host>", "Port:" contains "<port>", and "Login:" contains "administrator". The "Description:" field is empty. At the bottom of the dialog are two buttons: "OK" and "Cancel".

Once you configure your server settings,

PAR Export

Create a PAR file from the Portal Application Project

Specify the name of the PAR file for your Portal Application

PAR file: C:\SAP\Hover_menu\Hover_menu.par

Include the source code of the portal application

Deploy PAR

Servers

Alias	Login	Password	Description
localhost	administrator	*****	

Host: localhost Port: 50000 Login: administrator

Configure servers settings...

< Back Next > Finish Cancel

Click on Finish to deploy it on portal server.

Creating iview from PAR:

Now as we have finished deploying the PAR file, we need to create an iview from this deployed PAR and add it to your framework page. It is always recommended that you make a copy of default framework page and then make modifications into it. In my case I have directly added it to default framework page and noted down the path for default TLN iview.

Now launch portal, go to content administrator → portal content and create an iview from PAR.

iView Wizard

Step 1: Portal Archive Selection

- com.sap.portal.usermanagement.admin
- com.sap.portal.util.serverfilebrowser
- com.sap.portal.util.threadreporting
- com.sap.portal.xmltransformationiview
- com.sap.portal.yahoo
- com.sap.security.ume.consistencycheck
- com.sap.workflow.admin.conditions
- com.sap.workflow.admin.instance
- com.sap.workflow.admin.item
- com.sap.workflow.admin.role
- com.sap.workflow.admin.task
- com.sap.workflow.admin.template
- com.sap.workflow.apps
- com.sap.workflow.template.wizard
- com.sapportals.navigation.testComponent
- Hover_menu
- MCM

Cancel Back **Next >** Finish

Click on next,

iView Wizard

Step 2: Portal Component Selection

The items below are all components contained in the portal archive you selected in the previous screen. Your new iView or template derives its properties from the component you choose.

Choose Portal Component *

- HoverTLN

PS: Set isolation property of iview to “Embedded”.

Now go to portal users → std. portal users → open default framework page.
 Add our iview into the framework page and make it visible.

From the Portal Catalog, select the content you want to add to the page. In the Property Editor, edit the property values of the page and those of its iViews and pages.

	Name	ID	Visible	Fixed
<input type="checkbox"/>	Masthead iView	com.sap.portal.masthead	<input checked="" type="checkbox"/>	<input checked="" type="checkbox"/>
<input type="checkbox"/>	Page Title Bar	com.sap.portal.pageToolbar	<input checked="" type="checkbox"/>	<input checked="" type="checkbox"/>
<input type="checkbox"/>	Desktop Innerpage	com.sap.portal.innerpage	<input checked="" type="checkbox"/>	<input type="checkbox"/>
<input checked="" type="checkbox"/>	hovernew	com.int.hovernew	<input checked="" type="checkbox"/>	<input type="checkbox"/>

Page 1 / 1

Properties Open Delta Link Tracer Remove Show 'Default Framework Page' Properties

Now you are done with the implementation of hover PAR and you should refresh the portal page.
 Here is how our hover TLN looks like:

Welcome Administrator Administrator Help | Personalize | Log Off

Home Content Administration User Administration System Administration Content Management

Portal Information Portal Content | History Back

Multiple Property Replacement

Portal Favorites

- Feedbacks.
- IPL

6.0 | Guided Tour

Header Area
 Navigation Panel
 Content Area

Welcome to SAP Enterprise Portal 6.0

SAP Enterprise Portal is a building block in the SAP NetWeaver architecture. Specifically designed to meet all your work-related needs, SAP Enterprise Portal

Related Content

[JavaScript Reference](#)

[CSS Reference](#)

[SDN](#)

Disclaimer and Liability Notice

This document may discuss sample coding or other information that does not include SAP official interfaces and therefore is not supported by SAP. Changes made based on this information are not supported and can be overwritten during an upgrade.

SAP will not be held liable for any damages caused by using or misusing the information, code or methods suggested in this document, and anyone using these methods does so at his/her own risk.

SAP offers no guarantees and assumes no responsibility or liability of any type with respect to the content of this technical article or code sample, including any liability resulting from incompatibility between the content within this document and the materials and services offered by SAP. You agree that you will not hold, or seek to hold, SAP responsible or liable with respect to the content of this document.