



Licensing for SAP Business One and SDK

Lars Riecke

BU SMB, SAP AG, 04/04

These slides should give a brief overview about the new license mechanism and process of SAP Business One and the SDK starting from release 6.7

More information can be found in a detailed document that will be available soon.



General Information

SAP Business One License Packages

SAP Business One SDK Versions

SAP Business One SDK License Modes

DI Server License

License Mechanism and Installation

License Identifiers

Upgrade and Installation

License Ordering Process

SAP will introduce a new licensing model and process for SAP Business One and the SDK starting from release 6.7

- The license model will cover SAP Business One application, DI Server, SDK, New and Old Add-ons.
- For the SAP Business One regional version the mechanism will apply starting with release 7.2 (APA) and release 7.7 (CEE)

The new model will allow more flexible business models for partners and the field organization

The license is given by SAP in the format of a file, signed with SAP digital signature.

Compatibility can be ensured

A named user model will be implemented for SAP Business One and partner Add-Ons

- To use a license, a user will need to specifically have a license key assigned to him.
- The license is Per User Name! Therefore, user X in company A is the same as user X in company B.

Partners can re-use license information's for their own needs

A flexible and easy to use web based license ordering process will be implemented

SAP will provide/sell the following license packages

- **Every named user can be assigned to one of the packages except Basis Users *(they will be assigned automatically)**
- **Through the flexible design more individual packages are possible without changing the license mechanism in general**

Basis User

- **Access to Master Data Forms, Journal Entry Forms, Administration module, Business partner Module**
- **The Basic user will be automatically be included in other packages.**

CRM User

- **Includes Basic-functions, Sales Opportunities Module, Contact Management Module**

Service User

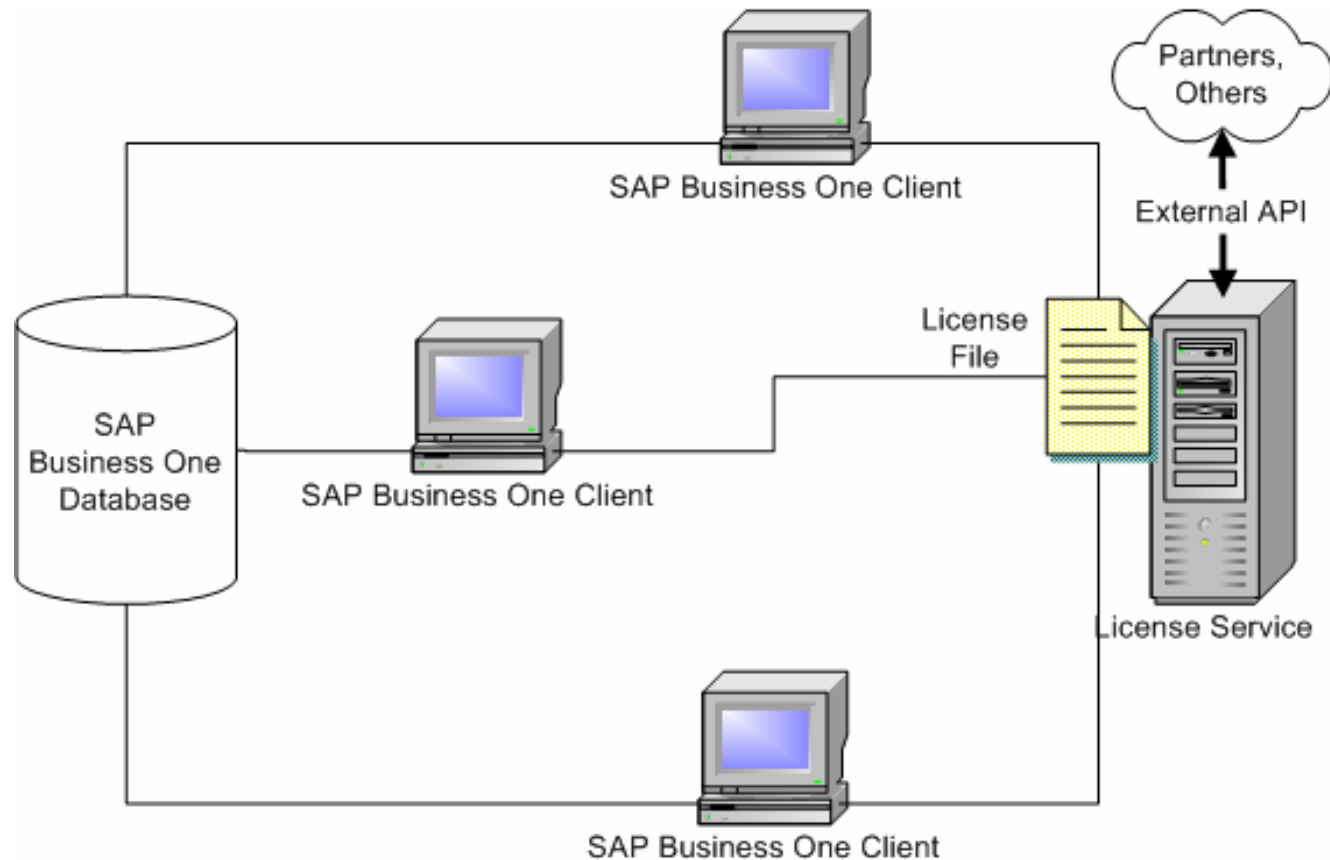
- **Includes Basic-functions, Service Management Module**

Professional User

- **Includes all modules and functions**

The license mechanism will be implemented through a

- License Service which manages the license requests and can be installed on any computer
- License File that is generated by SAP and includes all purchased modules and Add-On solutions



Starting with 6.7 the License Service can be installed on separate machine

- **During SAP Business One installation a connection to this (remote) license service will be established**
- **Licenses will be ordered with the machine ID of the server on which the license service runs on**

Through that multiple systems can be installed not requiring double licenses for single named users

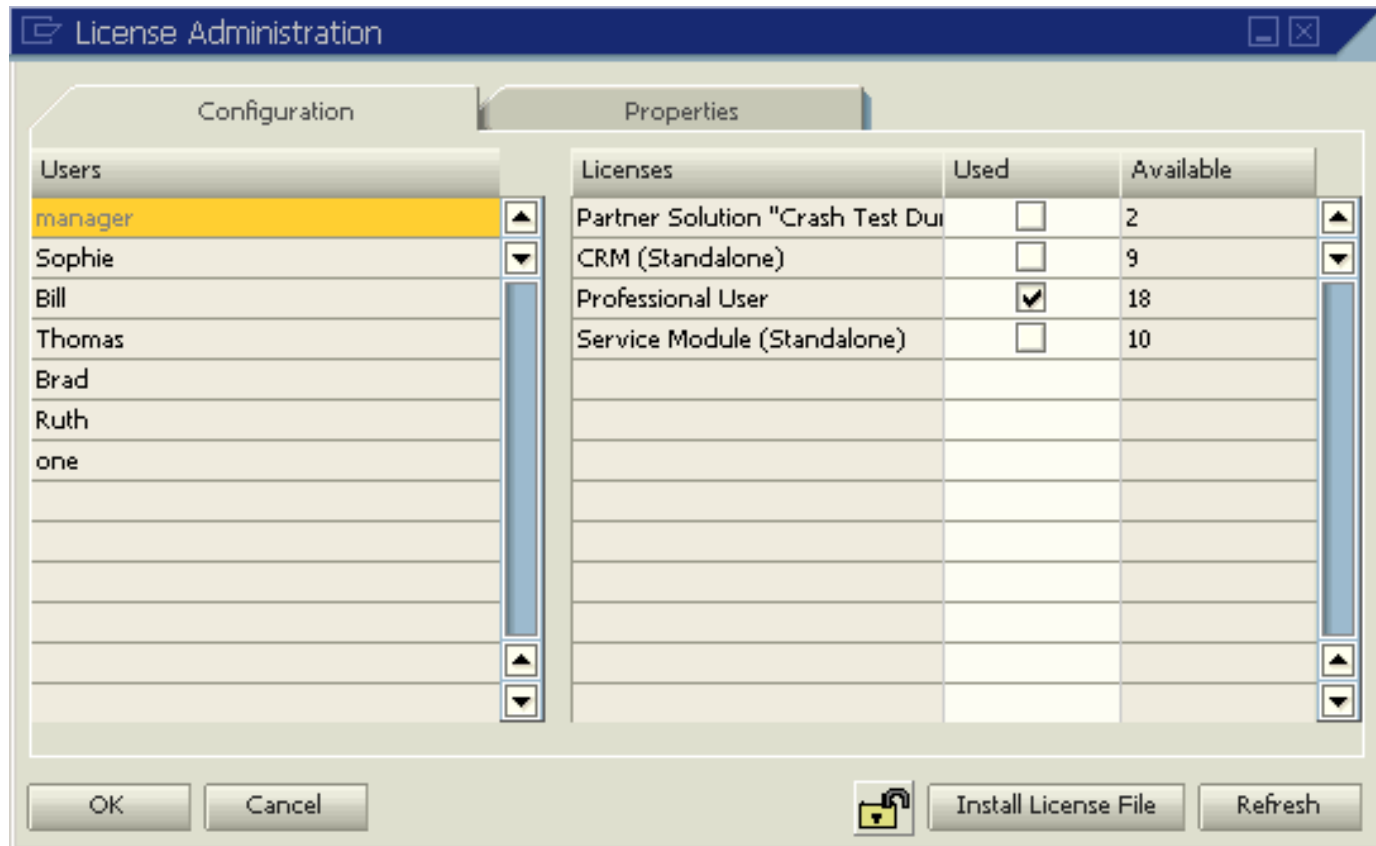
- **Through that single users can use e.g. a training, QA and production system using a single license**
- **But single named users can only log on twice at the same time through the License Service from different clients to the same company.**

The license service needs 1 minute to start up and to build up a new session map. During this time no clients can log on.

License mechanism is not connected to the permission mechanism.

The new License Administration form allows administrators to maintain licenses and grant users access to licensed SAP Business One modules and Add-On solutions

- View content of license file
- Import a new license file to the license service



The administration window displays only the users of the current company but the total available licenses number.

You cannot change the license key assignment of a connected user (appears in a different color).

For maintenance the License Service can be blocked to prevent authorization collisions

If two administrators update the license key distribution, the first one succeeds, the second will receive a message to refresh his view.

Depending of the usage of the SAP Business One Software Development Kit (SDK), SAP provides three different versions

- **SAP Business One SDK – Implementation Version**
- **SAP Business One SDK – Development Version**
- **SAP Business One SDK – Runtime Version**

The **Implementation Version is needed by customers/partners who want**

- **To change the screen layout of an individual SAP Business One implementation (for that only the UI API and SCG is needed)**
 - ◆ **Add, hide, move, change buttons/fields and screens to individual customer settings**
 - ◆ **Change screen colors**
 - ◆ **Example: Hide fields in screens based on user role and authorization**
- **No source code is allowed to be created with the Implementation Version which will change the business logic of SAP Business One**
- **Modifications made with the Implementation Version are not allowed to be sold or licensed to 3rd parties**

The **Development Version** is needed by partners/customers who want

- to create own industry solutions which will interface with SAP Business One (for this mainly the Data Interface API is used).
 - ◆ SAP Business One will be used for data exchange with 3rd party applications
 - ◆ Example: POS System Integration, HR Service Integration, Synchronization with Mobile Devices
- to change the program logic and processes (features and modules) of SAP Business One by using the tools and interfaces of the Software Development Kit (for this mainly the User Interface API is used).
 - ◆ Example: E-Banking Solution, Customer Service Solution (add new master data transaction e.g. maintenance history of equipment)
- to sell or license the created industry solution or Add-On to 3rd parties

The **Runtime Version** is needed by customers/partners who want

- to run SAP and partner Add-On solutions. This version only contains and installs the runtime environment of the APIs (just the DLLs) which is needed to run the Add-Ons.
- Example: A customer wants to use the Fixed Asset Add-On from SAP. He simply needs to run the installer for the runtime environment on each client machine the Add-On should be installed and install the Add-On afterwards.

SAP and partner Add-Ons will not be delivered or install this runtime package.

The runtime environment installation will be automated with the next releases.

Content

- **Development Version**
 - ◆ **Screen Code Generator (Release 6.2) or Screen Painter (Release 6.5), full documentation, sample programs, additional development tools**
- **Implementation Version**
 - ◆ **Screen Code Generator (Release 6.2) or Screen Painter (Release 6.5), full documentation for UI API, sample programs for UI API**
- **Runtime Version**
 - ◆ **DI API DLL, UI API DLL, JAR files for JCo**

The Versions have a different licensing model

- **The Development Version has a package based fee of 6.500 € for a maximum of 20 named users.**
- **The Implementation Version is included into the license of the SAP Business One Professional User – No special license fee available**
- **The Runtime Version is included into the license of the SAP Business One Add-On– No special license fee necessary**

The Versions will be shipped separately

- **The Development Version has to be ordered from SAP**
- **The Implementation and Runtime Versions are automatically included into the SAP Business One Software package**

While developing with the APIs or using the APIs four different license modes are available to check valid licensing

- **Development Mode**
- **Implementation Mode**
- **Solution Mode**
- **Compatibility Mode**

Through the different modes misuse will be blocked

The various modes will be distinguished through an identifier created for the different working modes

- **The Identifier is created through SAP Business One application (a new menu entry)**
- **The Identifier string generated will be inserted to a new property “AddonIdentifier” on the ICompany interface of the DI API or on the ISboGuiApi interface of the UI API.**
- **Through this identifier string, valid licenses will be checked. The “AddonIdentifier” property must be set before connecting from an Add-On to SAP Business One.**
- **Add-On License Key Name will be created once per Add-On from SAP and will be installed through the license file during licensing of SAP Business One**

The **Development Mode** is targeted to be used during the development phase of Add-On solutions

- A development license for the SAP Business One SDK must be available
- This mode was created to give partners the possibility to test Add-On solutions during development without applying for an License key Name from SAP

During development:

1. Create an development identifier in SBO application (menu bar). A specific identifier string will be generated from the system.
2. For testing include the specific identifier string into your source code.
3. If partners want to sell and implement this solution after development and testing, an Add-On License Key Name string must be applied for. Partners will get the Add-On License Key Name string from SAP and must change their development identifier towards this specific Add-On identifier before finally compiling and selling the solution.

During runtime:

- Customers having a development license can run 3rd party Add-Ons using the development identifier string.
- Customers having a development license cannot run 3rd party Add-Ons using the Solution identifier string.

The **Implementation Mode** is targeted to be used during the implementation and development of small implementation Add-Ons

- In this mode it is possible to create and run small implementation Add-Ons in a specific customer environment without applying for a Add-On License Key Name.
- Add-Ons developed in this mode must use the SAP Business One SDK Implementation Version.

During development:

1. Create an implementation identifier in SBO application (menu bar). A specific identifier string will be generated from the system.
2. Include the identifier string for this specific Add-On into your source code.
3. Compile and Implement the Add-On at the customer site.

During runtime:

- Add-Ons with implementation identifier strings run only in the environment the identifier was created in. The machine ID must match

The **Solution Mode** will be used running Add-On solutions at the customer site

- This mode was created to check valid licensing for partner Add-On solutions for SAP Business One
- A valid license for a named user must be available

During Installation:

- Apply for SAP Business One and Partner Add-On license from SAP and SAP Business/Solution Partner
- Install SAP Business One and Add-On solutions
- Install license file sent by SAP (this file will include also strings for Add-Ons)
- Set permissions of named users for licensed modules in License Administration Window in SAP Business One application.

During runtime:

- Add-Ons with Solution identifier strings can only connect to SAP Business One through users with a valid license for this Add-On

The **Compatibility Mode** is available to support “old” Add-Ons that have been developed before release 6.7 and do not use the identification string

- “Older” Add-Ons still run with SAP Business One release 6.7 to ensure compatibility
- BUT this mode will only work for a transitional time till the 31.12.2005
- This mode should give partners and customers the possibility to upgrade their systems and solutions

During runtime:

- Add-Ons that do not set the “AddonIdentifier” property are assumed to be “old” Add-Ons and are granted to be functional till end of 2005.
- Partners/customers must upgrade and implement new versions which use the new licensing mechanism

The DI Server is based on the DI API but provides a server based SOAP access layer to multiple remote clients

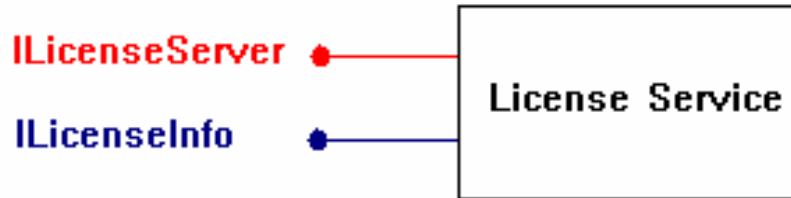
- **The DI Server adds more scalability and performance to SAP Business One for data exchange**
- **Runs on a server**

DI Server is required to run Add-Ons in server configurations

The DI Server has a CPU based license model

- **The number of licenses is determined by the number of existing CPUs installed in the machine the DI Server is installed on**
- **The license mechanism will block not licensed CPUs**
- **The number of users of users that can connect through a single DI Server license is based on the expected performance of the system.**

An external API allows Add-Ons read access to license information



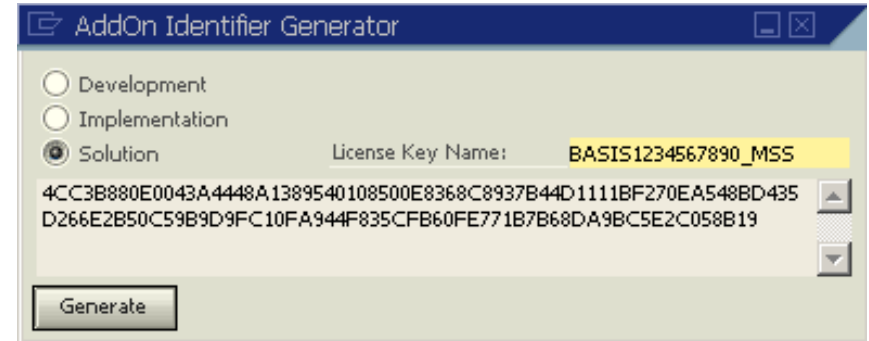
ILicenseServer – Internal interface requires authentication.

ILicenseInfo – External interface. Can be used by all. Support methods such as:

- ◆ **GetHardwareKey**
- ◆ **IsUserLicensed**
- ◆ **GetLicenseInfo**
- ◆ **GetLoggedInUsers**

All Add-Ons must be recognized by the License Service through the Add-On identifier

- Unique string for each Add-On and licensing mode (Development, Implementation, Solution)
- Will be generated by build in generator



Process using the different modes

Step	Add-On Solution Identifier	Development Identifier	Implementation Identifier
1	Order License Key name from SAP through local Partner Management	N/A	N/A
2	SAP will return specific License Key Name	N/A	N/A
3	Create Solution Identifier in SAP Business One by using the build in Add-On Identifier generator	Create Add-On Identifier in SAP Business One by using the build in Add-On Identifier generator	Create Add-On Identifier in SAP Business One by using the build in Add-On Identifier generator
4	Included generated Add-On Identifier into Add-On source code	Included generated Add-On Identifier into Add-On source code	Included generated Add-On Identifier into Add-On source code

Depending on the status of the Add-On solution the following process applies

■ **Certified Solutions:**

- ◆ Will be developed by Solution Partners (SPs)
- ◆ Can be sold by Sales and Support Partners (SSPs) and SPs
- ◆ Are visible in the SMP for all partners during license key requests for SAP Business One and partner Add-Ons

■ **Uncertified Solutions:**

- ◆ Will be developed by Sales and Service Partners (SSPs)
- ◆ Can be sold by SSPs and SPs
- ◆ Are visible in the SMP for all partners during license key requests for SAP Business One and partner Add-Ons

■ **Individual Customer Solution**

- ◆ Specific customer solutions developed by SSP or SPs for a single customer
- ◆ Will not be sold through 3rd parties
- ◆ Should not be visible in the license key request form on SMP

Add-On Identifier (cont.)

Step	Certified Solutions	Uncertified Solutions	Individual Customer Solutions
1	A License Key Name can be requested during certification process through local partner management	License Key Name must be requested through local partner management	License Key Name can be ordered through SMP when applying for a license key for this customer individual solution
2	License Key Name will be returned by SAP	License Key Name will be returned by SAP	License Key Name will be returned by SAP
3	Generate Solution Identifier with License Key Name	Generate Solution Identifier with License Key Name	Generate Solution Identifier with License Key Name
4	Implement Identifier into source code and compile	Implement Identifier into source code and compile	Implement Identifier into source code and compile
5	Solution ready for selling solution to customer	Solution ready for selling solution to customer	Solution ready for selling solution to the specific customer
	When applying for a License Key, Certified Solutions are displayed in the order list on SMP	When applying for a License Key, Uncertified Solutions are displayed in the order list on SMP	

Add-on solutions using the UI and DI API should set the Add-On Identifier only in the UI API and first connect to the UI API and then to the DI API.

- **Another connection through the DI API would use up another license**

SAP Business One Installation Process

1. **Install the Service Tools and the License Service.**
2. **Get the Hardware key from the service manager**
3. **Get a License file from SAP**
4. **Import the license file to the license service through the settings form in the Service Manager**
5. **Upgrade/Install Common database. Insert the license service machine name**
6. **Install/Upgrade SAP Business One client application**
7. **Assign license keys to specific users through the Administration window**

General Settings

Connection
License Service Machine: ILMOB02
Connect

Settings
System Number:
Installation Number:
Hardware Key: I1482327673
 Write to Log

Install License File
License File: ...
Install

OK Cancel

SBO Common Upgrade

4. Set the License Server connection

License Server: ILMOB02

Cancel << Back Next >>

SAP Business One

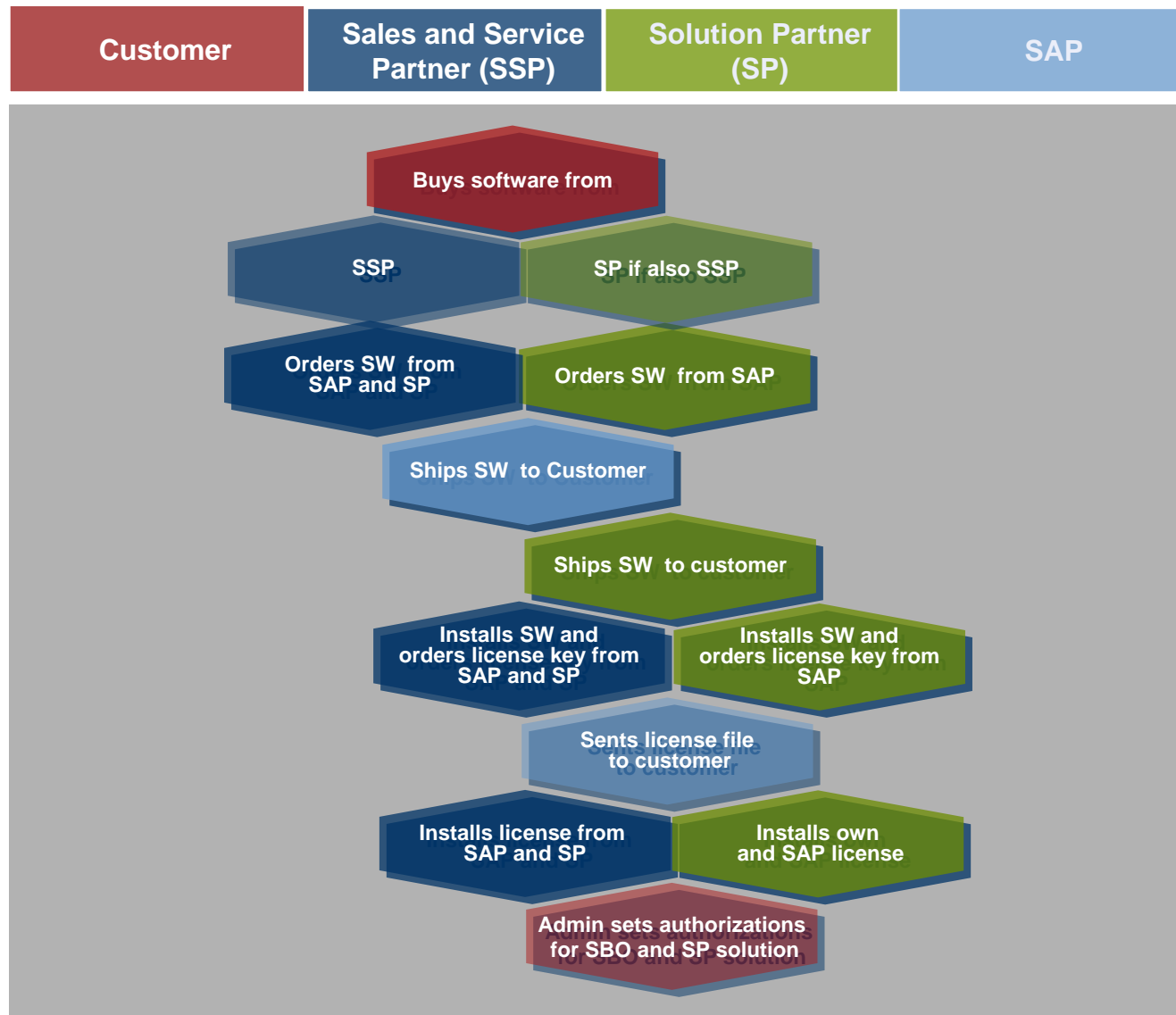
- An upgrade path is available to SAP Business One 6.7
- A new license key must be ordered from SAP BEFORE the upgrade because it is needed during the upgrade process

Add-On solutions

- “Old” Add-On solutions must be extended with the identifier string and recompiled to run with release 6.7
- This is only ONE new code line and can be done in a matter of minutes

```
SboGuiApi.AddonIdentifier =“<Identifier String>”
```

License Order Process



SAP cannot check correct licensing of the partner solution. SAP has not data about the license agreements of partners to end customers!

- **The license mechanism can only check if *connecting* users from 3rd party Add-Ons have a valid licensing, as it was reported during the license ordering for SAP Business One.**

- No part of this publication may be reproduced or transmitted in any form or for any purpose without the express permission of SAP AG. The information contained herein may be changed without prior notice.
- Some software products marketed by SAP AG and its distributors contain proprietary software components of other software vendors.
- Microsoft®, WINDOWS®, NT®, EXCEL®, Word®, PowerPoint® and SQL Server® are registered trademarks of Microsoft Corporation.
- IBM®, DB2®, DB2 Universal Database, OS/2®, Parallel Sysplex®, MVS/ESA, AIX®, S/390®, AS/400®, OS/390®, OS/400®, iSeries, pSeries, xSeries, zSeries, z/OS, AFP, Intelligent Miner, WebSphere®, Netfinity®, Tivoli®, Informix and Informix® Dynamic Server™ are trademarks of IBM Corporation in USA and/or other countries.
- ORACLE® is a registered trademark of ORACLE Corporation.
- UNIX®, X/Open®, OSF/1®, and Motif® are registered trademarks of the Open Group.
- Citrix®, the Citrix logo, ICA®, Program Neighborhood®, MetaFrame®, WinFrame®, VideoFrame®, MultiWin® and other Citrix product names referenced herein are trademarks of Citrix Systems, Inc.
- HTML, DHTML, XML, XHTML are trademarks or registered trademarks of W3C®, World Wide Web Consortium, Massachusetts Institute of Technology.
- JAVA® is a registered trademark of Sun Microsystems, Inc.
- JAVASCRIPT® is a registered trademark of Sun Microsystems, Inc., used under license for technology invented and implemented by Netscape.
- MarketSet and Enterprise Buyer are jointly owned trademarks of SAP AG and Commerce One.
- SAP, R/3, mySAP, mySAP.com, xApps, xApp, SAP NetWeaver and other SAP products and services mentioned herein as well as their respective logos are trademarks or registered trademarks of SAP AG in Germany and in several other countries all over the world. All other product and service names mentioned are the trademarks of their respective companies. Data contained in this document serves information purposes only. National product specifications may vary.