

# Embedding an Image into Your Application in Visual Composer for SAP NetWeaver Composition Environment



## Applies to:

Visual Composer for SAP enhancement package 1 for SAP NetWeaver Composition Environment 7.1

[For more information visit the Visual Composer Page](#)

## Summary

In Visual Composer, embedding an image into an application is done using the *Image* control. The image's source can either be a URL or an image from the image library of the Composition Environment.

To demonstrate this capability, I created the "[Lucky Stones](#)" application, which enables the user to retrieve detailed information about different types of stones.

I used simulated services when creating this application, so that you can import the model I attached (see related content at the end of this article) and run it in your Visual Composer system.

**Author:** Yogev Lidor

**Company:** SAP

**Created on:** 01 November 2008

## Author Bio



Yogev is a Visual Composer Solution Expert working in the Visual Composer Solution Office.

## Table of Contents

How to?.....	3
Embed an Image into Your Model .....	3
Configure Your Image .....	3
The Image Control in the Attached Model .....	4
The Model's Flow .....	4
Related Content.....	5
Copyright.....	6

## Common Use Case

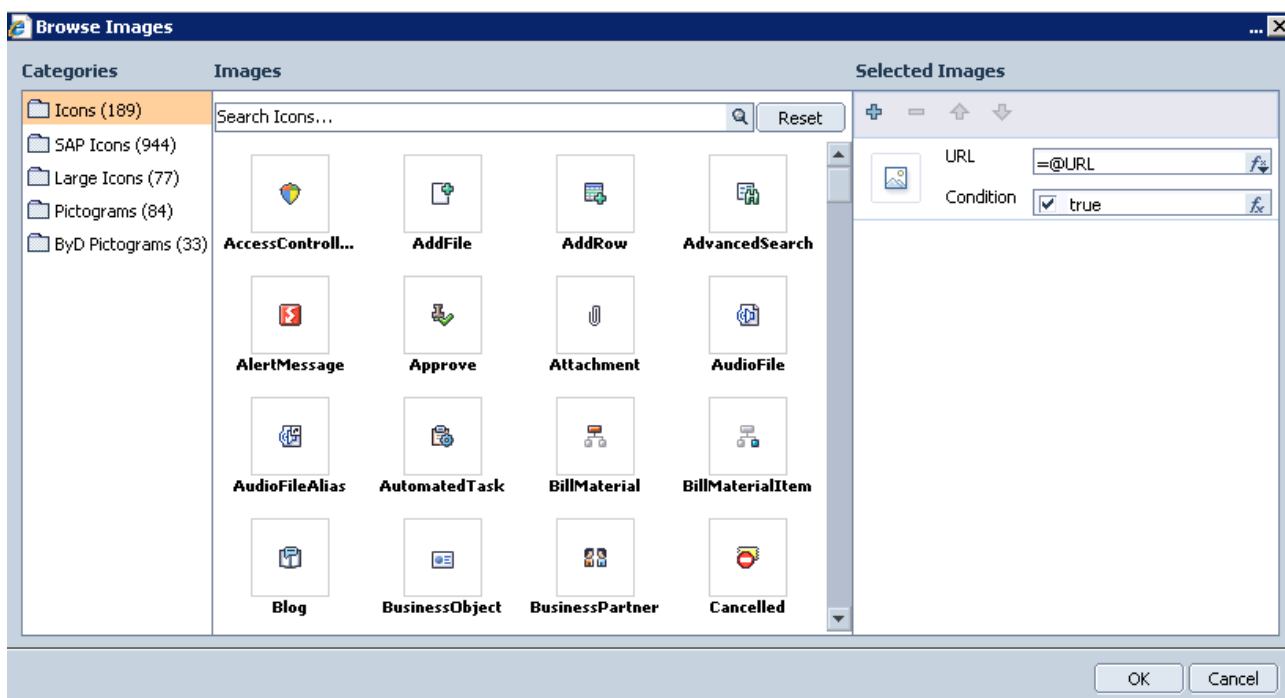
You use the Image control to display graphical images in your application. For example, when presenting details about a product you can display a picture of that product together with the rest of the details.

## How to?

### Embed an Image into Your Model

To embed an image into a model you need to use the *Image* control. The *Image* control is used to display an image from a URL or from the image library of the Composition Environment. Open a new model and from the Compose Task Panel drag a *Form view* onto the Design board. Switch to the Layout board (by clicking the *Layout* button at the bottom of the workspace) and locate the *Image* control in the Compose Task Panel under the *Advanced Controls* section. Drag the *Image* control onto the board and right-click it. From the context menu select *Configure*. In the Configure task panel click the URL attribute field. To embed a static image, select an image from the left section of the *Browse Images* dialog box or click the + button in the right section and paste the URL of the image. To embed a dynamic image, click the + button in the right section of the *Browse Images* dialog box and select the field that will hold the image's URL at runtime:

Figure 1:



### Configure Your Image

On the Layout board, double-click the *Image* control. In the Configure Image Task Panel you can see the attributes of the *Image* control. Let's review some of them:

- *URL*: As mentioned before, this attribute is used to set the image source, whether it is from a URL or from the image library of the Composition Environment.
- *Action*: The image, like any other control, can trigger an action when it is clicked at runtime. To assign actions to the image control, click the *Action* field and assign actions to the control. At runtime, when the image is clicked the actions will be triggered.
- *Scale mode*: You can set a constant size for your image by selecting the *Proportional fit* attribute and stretching your image to the desirable size in the *Layout* board.

## The Image Control in the Attached Model

1. Import, deploy, and run the *Lucky Stones* model.
2. Select the desired effect.
3. Select a stone from the table.
4. Click the *Detailed Information* button.
5. A picture of the stone and some detailed information are presented.

### The Model's Flow

In this model, the URL of the image is generated dynamically from a service at runtime.

Let's see how it works:

When clicking one of the effects (the blue text) of the first screen, we trigger the *stone\_by\_parameter* service that passes the corresponding data to the *Stones* table. Then, when clicking on the *Detailed Information* button we trigger the *stone\_by\_parameter* service again. This time the service supplies the URL of the image that is shown in the *Stone Details* form.

As shown in the screen above, you can see that the URL of the image is supplied by a field called *URL* that comes from the service.

## Related Content

[Lucky Stones Model](#)

[For more information visit the Visual Composer Page](#)

## Copyright

© 2008 SAP AG. All rights reserved.

No part of this publication may be reproduced or transmitted in any form or for any purpose without the express permission of SAP AG. The information contained herein may be changed without prior notice.

Some software products marketed by SAP AG and its distributors contain proprietary software components of other software vendors.

Microsoft, Windows, Outlook, and PowerPoint are registered trademarks of Microsoft Corporation.

IBM, DB2, DB2 Universal Database, OS/2, Parallel Sysplex, MVS/ESA, AIX, S/390, AS/400, OS/390, OS/400, iSeries, pSeries, xSeries, zSeries, System i, System i5, System p, System p5, System x, System z, System z9, z/OS, AFP, Intelligent Miner, WebSphere, Netfinity, Tivoli, Informix, i5/OS, POWER, POWER5, POWER5+, OpenPower and PowerPC are trademarks or registered trademarks of IBM Corporation.

Adobe, the Adobe logo, Acrobat, PostScript, and Reader are either trademarks or registered trademarks of Adobe Systems Incorporated in the United States and/or other countries.

Oracle is a registered trademark of Oracle Corporation.

UNIX, X/Open, OSF/1, and Motif are registered trademarks of the Open Group.

Citrix, ICA, Program Neighborhood, MetaFrame, WinFrame, VideoFrame, and MultiWin are trademarks or registered trademarks of Citrix Systems, Inc.

HTML, XML, XHTML and W3C are trademarks or registered trademarks of W3C®, World Wide Web Consortium, Massachusetts Institute of Technology.

Java is a registered trademark of Sun Microsystems, Inc.

JavaScript is a registered trademark of Sun Microsystems, Inc., used under license for technology invented and implemented by Netscape.

MaxDB is a trademark of MySQL AB, Sweden.

SAP, R/3, mySAP, mySAP.com, xApps, xApp, SAP NetWeaver, and other SAP products and services mentioned herein as well as their respective logos are trademarks or registered trademarks of SAP AG in Germany and in several other countries all over the world. All other product and service names mentioned are the trademarks of their respective companies. Data contained in this document serves informational purposes only. National product specifications may vary.

These materials are subject to change without notice. These materials are provided by SAP AG and its affiliated companies ("SAP Group") for informational purposes only, without representation or warranty of any kind, and SAP Group shall not be liable for errors or omissions with respect to the materials. The only warranties for SAP Group products and services are those that are set forth in the express warranty statements accompanying such products and services, if any. Nothing herein should be construed as constituting an additional warranty.

These materials are provided "as is" without a warranty of any kind, either express or implied, including but not limited to, the implied warranties of merchantability, fitness for a particular purpose, or non-infringement.

SAP shall not be liable for damages of any kind including without limitation direct, special, indirect, or consequential damages that may result from the use of these materials.

SAP does not warrant the accuracy or completeness of the information, text, graphics, links or other items contained within these materials. SAP has no control over the information that you may access through the use of hot links contained in these materials and does not endorse your use of third party web pages nor provide any warranty whatsoever relating to third party web pages.

Any software coding and/or code lines/strings ("Code") included in this documentation are only examples and are not intended to be used in a productive system environment. The Code is only intended better explain and visualize the syntax and phrasing rules of certain coding. SAP does not warrant the correctness and completeness of the Code given herein, and SAP shall not be liable for errors or damages caused by the usage of the Code, except if such damages were caused by SAP intentionally or grossly negligent.