

# MGW Configuration Parameters



## Applies to:

Gateway to SAP NetWeaver Mobile 1.1 SP06 and above. For more information, visit the [Mobile homepage](#).

## Summary

All the parameters relevant to Mobile Gateway are brought together in a single screen. This document briefly explains the usage of the Mobile Gateway parameters from this screen.

**Author:** Deepak Kulkarni

**Company:** SAP Labs India private limited

**Created on:** 10 November, 2011

## Author Bio

Deepak Kulkarni is working as a Senior Quality Engineer in the NetWeaver Mobile team at SAP Labs India Pvt. Ltd.

## Table of Contents

Focus .....	3
Mobile Gateway Configuration Parameters Screen .....	3
Usage of Mobile Gateway Configuration Parameters screen .....	5
Related Content .....	6
Copyright.....	7

## Focus

In the MGW Parameter Configuration screen only parameters belonging to parameter key DOE\_CONNECTOR will be displayed. Depending on the parameter, restrictions will be put on editing of fields under Validity Subarea, Text Value and Numeric Value (which the user had to do editing the parameters in sdoe\_param table), thus reducing the time and effort of the user. Also, option shall be provided to filter the entries as well to transport them in a Transport Request.

The intended audience for the document is:

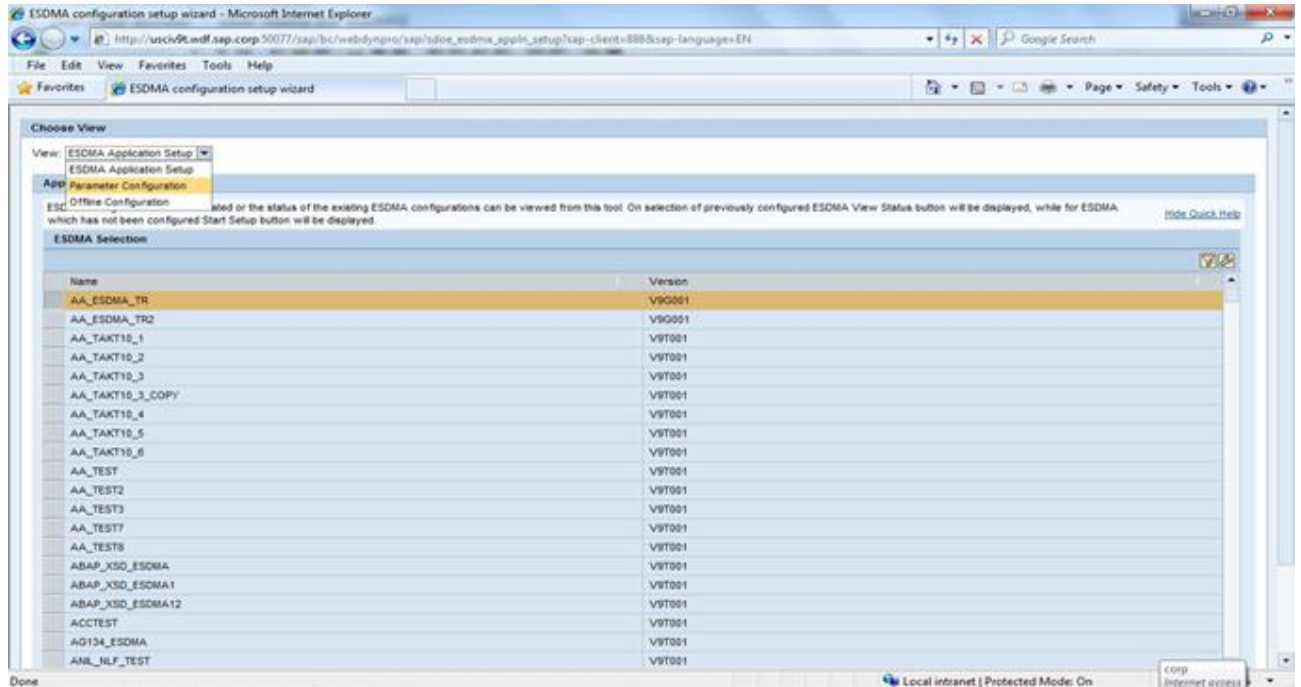
- **Administrators**
- **Development Consultants**

## Mobile Gateway Configuration Parameters Screen

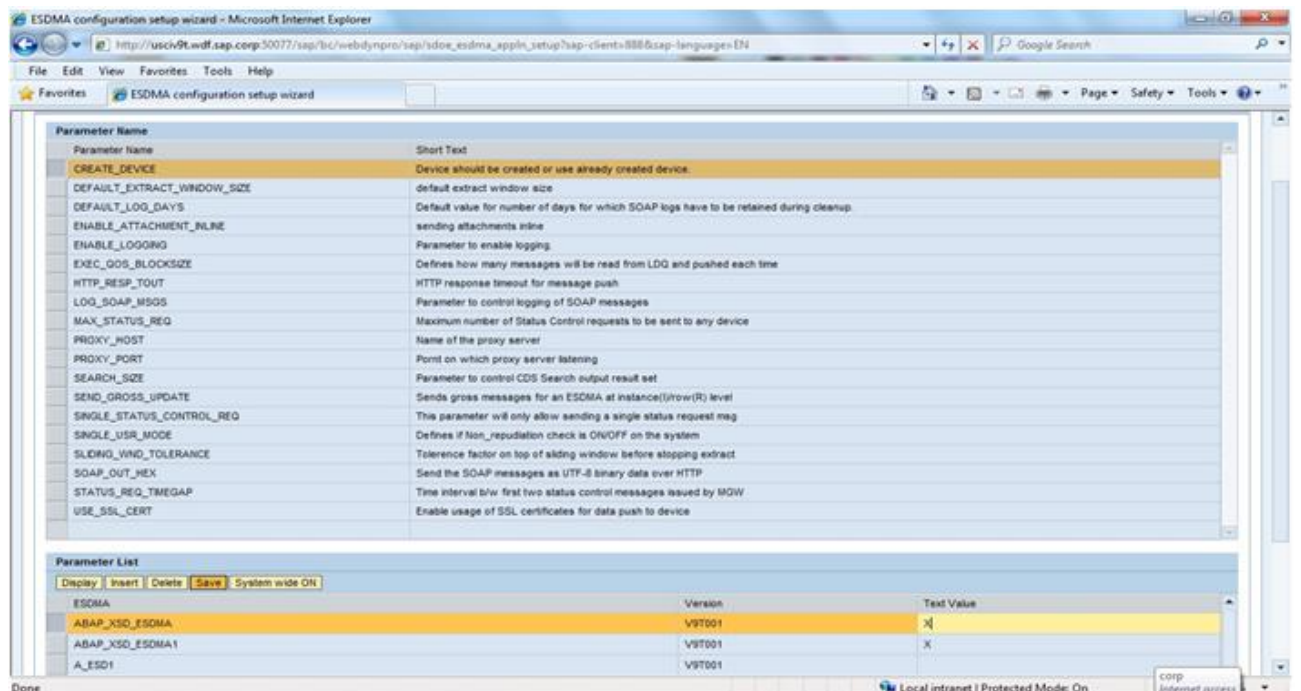
1. User has to login to 710 SP06 and above system which has DOE (Data Orchestration Engine) and Mobile Gateway installed.
2. Open 'ESDMA Application Setup' screen from SAP Easy Access – User menu as shown below



- The below shown screen is displayed. In this screen select 'Parameter Configuration' from the drop down as shown.

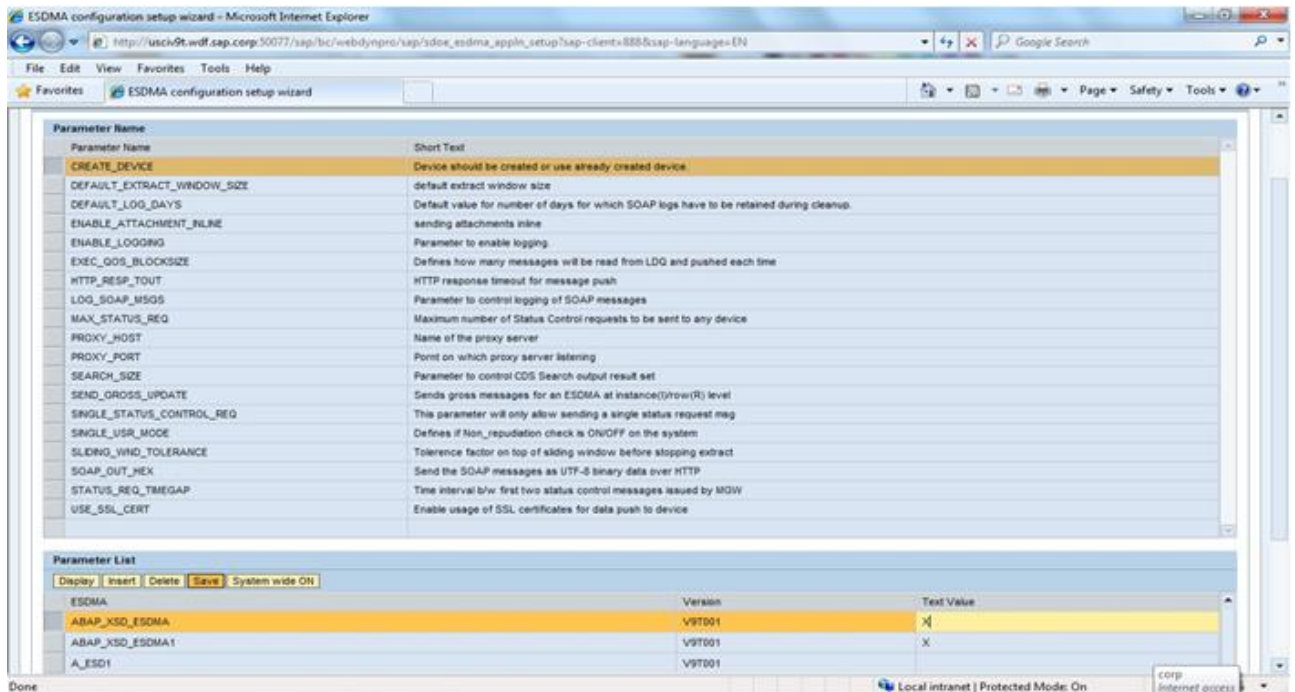


- On selecting 'Parameter Configuration' from the drop down the following screen is shown with all the configuration parameters relevant to Mobile Gateway.

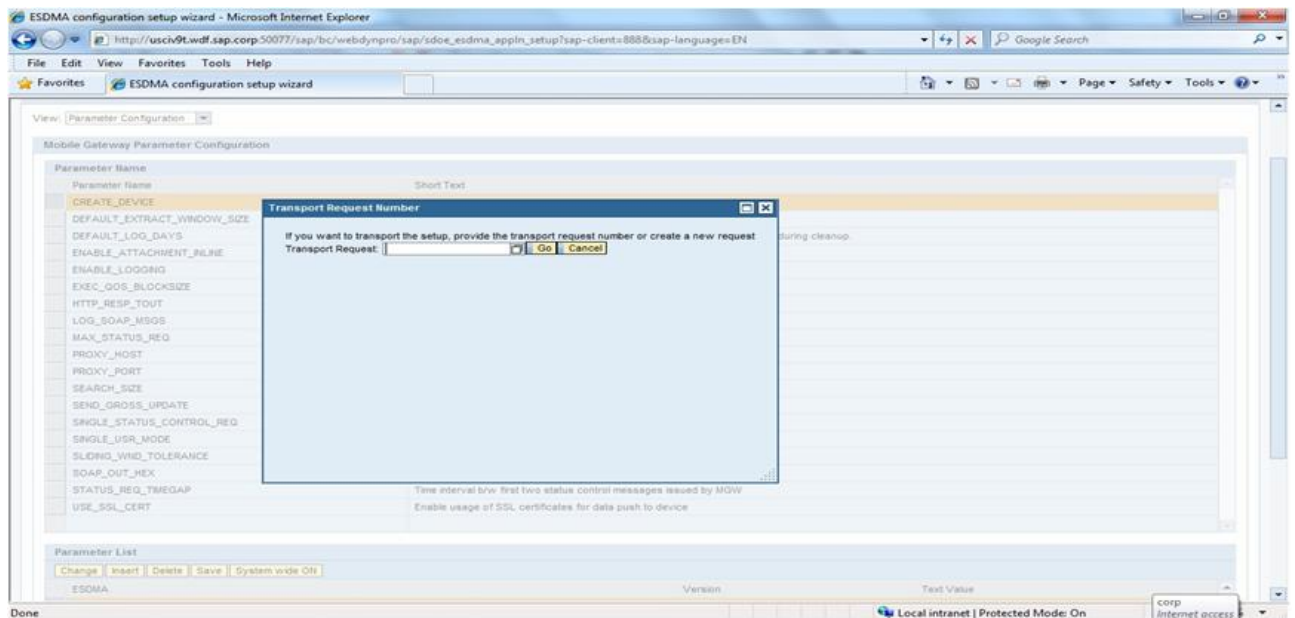


## Usage of Mobile Gateway Configuration Parameters screen

1. Select "Create Device" parameter and click on "Change" in Parameter List for the first Entry. Enter Text Value as "X" and click save. User can also create an entry for his/her ESDMA and save.



2. Transport request pop up appears; hence the user can transport the parameter configuration with the value to a desired system. This is shown in the below screen.



3. Select a transport request from the F4 help and click on the button 'Go'. Success or Error message is displayed accordingly. If the user doesn't want to transport the configuration parameter then the user can click on 'Cancel' button.
4. In the similar manner the user can insert/modify/delete the other Mobile Gateway configuration parameters from the same screen and transport them to different system if the user wants.

## Related Content

For more information, visit the [Mobile homepage](#).

## Copyright

© Copyright 2011 SAP AG. All rights reserved.

No part of this publication may be reproduced or transmitted in any form or for any purpose without the express permission of SAP AG. The information contained herein may be changed without prior notice.

Some software products marketed by SAP AG and its distributors contain proprietary software components of other software vendors.

Microsoft, Windows, Excel, Outlook, and PowerPoint are registered trademarks of Microsoft Corporation.

IBM, DB2, DB2 Universal Database, System i, System i5, System p, System p5, System x, System z, System z10, System z9, z10, z9, iSeries, pSeries, xSeries, zSeries, eServer, z/VM, z/OS, i5/OS, S/390, OS/390, OS/400, AS/400, S/390 Parallel Enterprise Server, PowerVM, Power Architecture, POWER6+, POWER6, POWER5+, POWER5, POWER, OpenPower, PowerPC, BatchPipes, BladeCenter, System Storage, GPFS, HACMP, RETAIN, DB2 Connect, RACF, Redbooks, OS/2, Parallel Sysplex, MVS/ESA, AIX, Intelligent Miner, WebSphere, Netfinity, Tivoli and Informix are trademarks or registered trademarks of IBM Corporation.

Linux is the registered trademark of Linus Torvalds in the U.S. and other countries.

Adobe, the Adobe logo, Acrobat, PostScript, and Reader are either trademarks or registered trademarks of Adobe Systems Incorporated in the United States and/or other countries.

Oracle is a registered trademark of Oracle Corporation.

UNIX, X/Open, OSF/1, and Motif are registered trademarks of the Open Group.

Citrix, ICA, Program Neighborhood, MetaFrame, WinFrame, VideoFrame, and MultiWin are trademarks or registered trademarks of Citrix Systems, Inc.

HTML, XML, XHTML and W3C are trademarks or registered trademarks of W3C®, World Wide Web Consortium, Massachusetts Institute of Technology.

Java is a registered trademark of Oracle Corporation.

JavaScript is a registered trademark of Oracle Corporation, used under license for technology invented and implemented by Netscape.

SAP, R/3, SAP NetWeaver, Duet, PartnerEdge, ByDesign, SAP Business ByDesign, and other SAP products and services mentioned herein as well as their respective logos are trademarks or registered trademarks of SAP AG in Germany and other countries.

Business Objects and the Business Objects logo, BusinessObjects, Crystal Reports, Crystal Decisions, Web Intelligence, Xcelsius, and other Business Objects products and services mentioned herein as well as their respective logos are trademarks or registered trademarks of Business Objects S.A. in the United States and in other countries. Business Objects is an SAP company.

All other product and service names mentioned are the trademarks of their respective companies. Data contained in this document serves informational purposes only. National product specifications may vary.

These materials are subject to change without notice. These materials are provided by SAP AG and its affiliated companies ("SAP Group") for informational purposes only, without representation or warranty of any kind, and SAP Group shall not be liable for errors or omissions with respect to the materials. The only warranties for SAP Group products and services are those that are set forth in the express warranty statements accompanying such products and services, if any. Nothing herein should be construed as constituting an additional warranty.