

# SAP BusinessObjects Report Conversion Tool Functionality and Use



## Applies to:

SAP BusinessObjects Enterprise XI 3.0, SAP BusinessObjects Enterprise XI 3.1 all support packs

For more information, visit [SAP BusinessObjects](#).

## Summary

This document describes how and when to use the Report Conversion Tool to convert Desktop Intelligence documents to Web Intelligence documents. It also describes the prerequisites and limitations of this tool.

**Author:** Ramakrishna Kamurthy

**Company:** SITA CORP INDIA Pvt. Ltd.

**Created on:** 04 June 2009

## Author Bio

Ramakrishna Kamurthy works for SITA CORP India Pvt. Ltd. as SAP BI/BOBJ Consultant. He has three years of SAP BW/BI experience with one year of experience in SAP Data Archiving and SAP BusinessObjects Administration.

## Table of Contents

Report Conversion Tool.....	3
Prerequisites .....	3
Working Modes & Statuses .....	3
Step-by-Step Process.....	4
Converting documents .....	4
Compare and save documents .....	8
Limitations.....	12
Related Content.....	12
Disclaimer and Liability Notice.....	13

## Report Conversion Tool

SAP BusinessObjects Report Conversion Tool is used to convert Desktop Intelligence reports to Web Intelligence format and publishes the converted reports to the CMC.

Report Conversion Tool is used to convert the following types of report to Web Intelligence XI 3.x (WID) format:

- BusinessObjects (REP) reports migrated to Desktop Intelligence (REP) format
- Desktop Intelligence reports created directly in Desktop Intelligence and based on these dataproviders:
  - a BusinessObjects universe
  - a Microsoft Excel document
  - an ASCII file (formats ASC, PRN, CSV and TXT)
  - free-hand SQL and stored procedures

### Prerequisites

The following are the prerequisites to use the Report Conversion Tool:

- It is mandatory to have the Designer tool, to create audit log or to detect Free-Hand SQL and Stored Procedures reports.
- Before using Report Conversion Tool, create an audit connection in designer and assign it to Report Conversion Tool in CMC.

### Working Modes & Statuses

- Report Conversion Tool works in two modes:
  - Connected Mode – is connected to a CMS
  - Standalone Mode – is not connected to CMS
- After conversion, the tool assigns one of three statuses to each report:
  - Fully Converted – the converted report is identical to original report
  - Partly Converted – the converted report is not fully identical to original report
  - Not Converted – completely not converted

## Step-by-Step Process

### Converting documents

Before launching Report Conversion Tool, make sure that available of audit database and that was assigned to Report Conversion Tool.

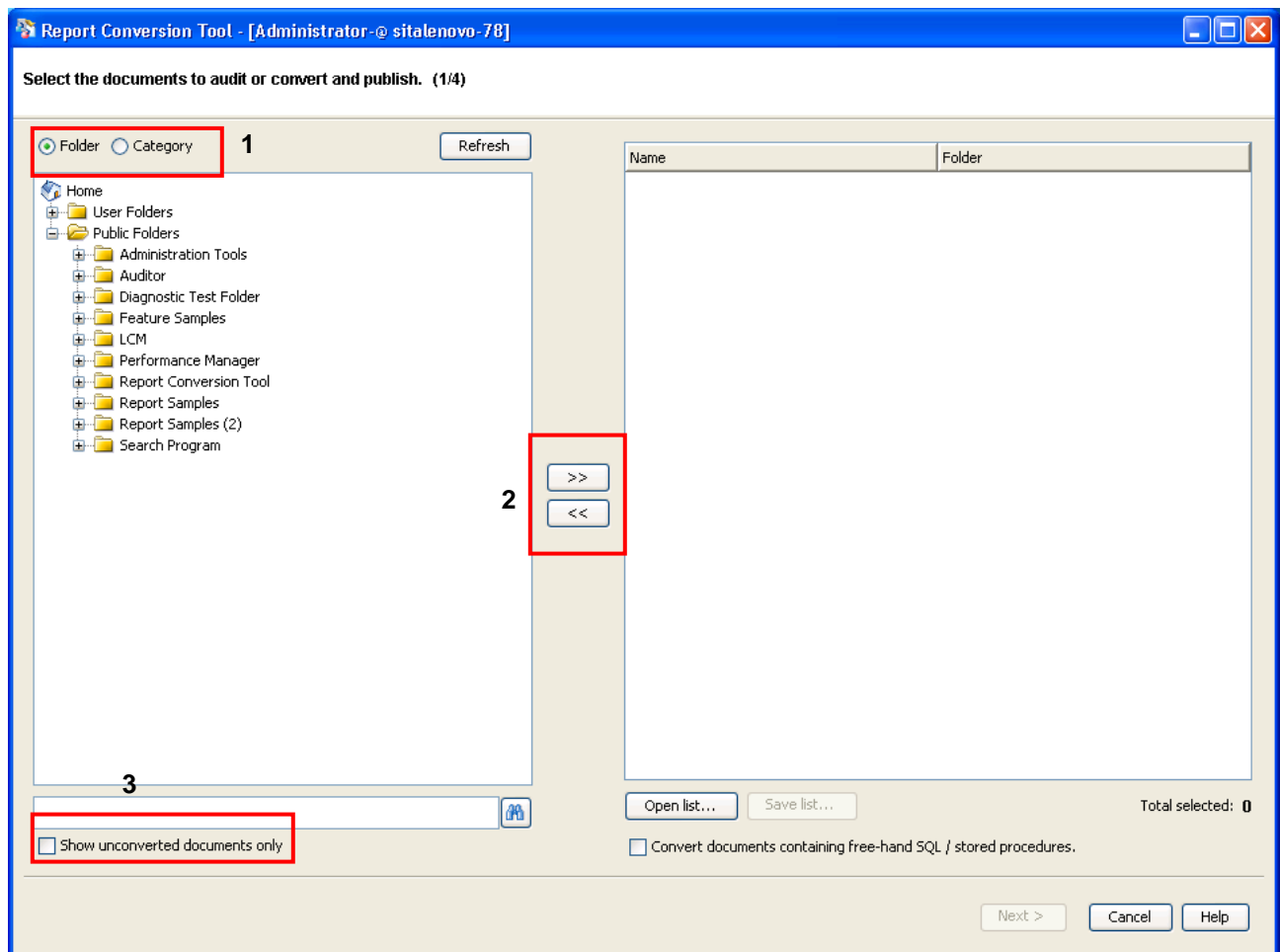
1. Log on to the Central Management Console (CMC).
2. Click **Applications** -> **Report Conversion Tool**.
3. Click **Properties**.

The screenshot shows the Central Management Console (CMC) interface in Mozilla Firefox. The 'Report Conversion Tool Settings' dialog box is open, displaying the 'Properties' tab. The 'Conversion Audit Connection' dropdown menu is expanded, and 'Conversion Audit Connection' is selected and highlighted with a red circle. The 'Reset' and 'Update' buttons are visible at the bottom of the dialog box. The background shows the CMC application list with 'Report Conversion Tool' selected.

- Log on to Report Conversion Tool in connected mode by providing the server name, username, password and authentication.



- Select the Desktop Intelligence documents to convert from the repository folders or categories.

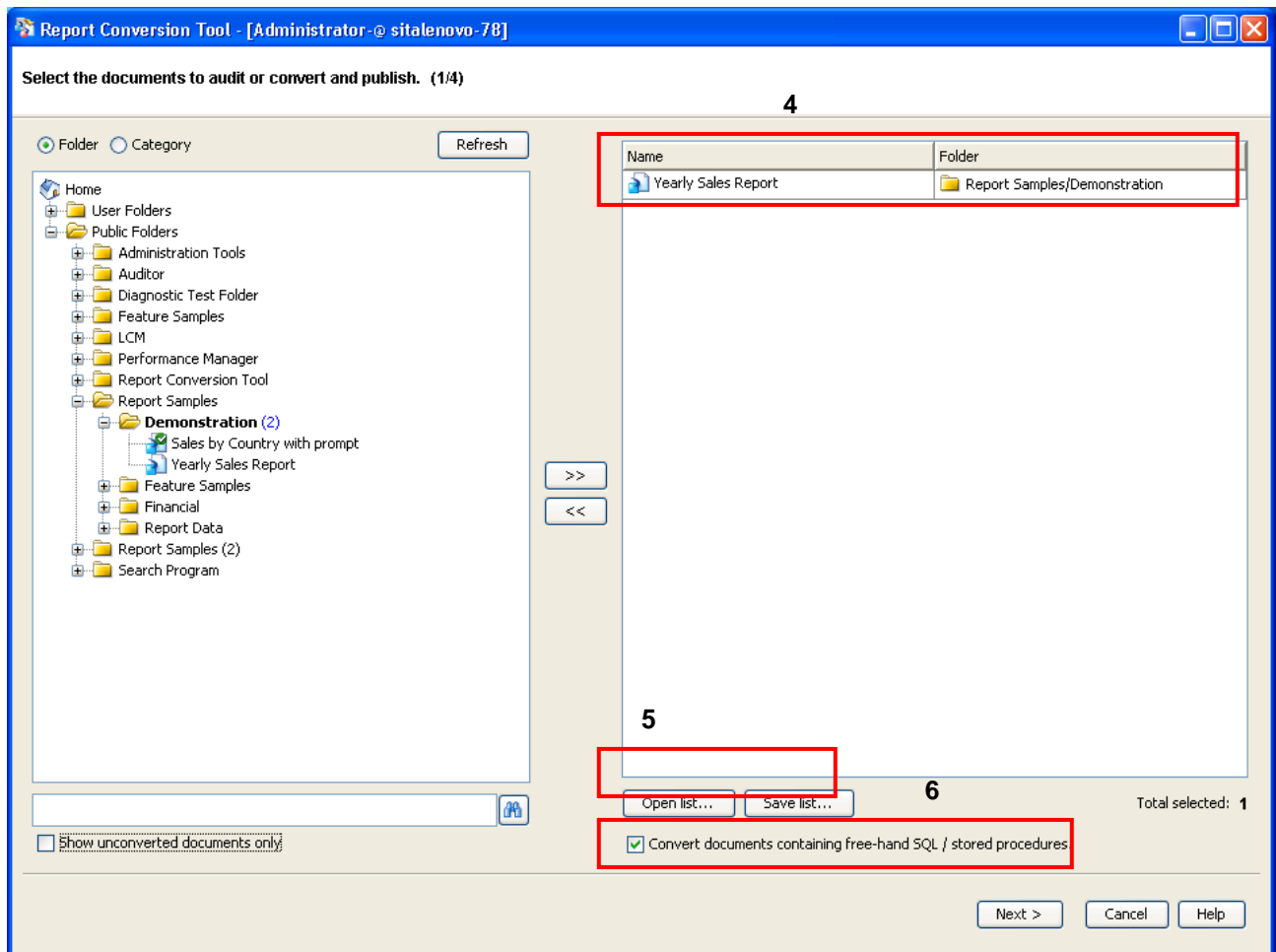


- Select **Folder** to view the repository by folder or select **Category** to view the repository by category. (**Box 1**)
- Click the **arrow buttons** to move the documents from left to right panel and vice versa (**Box 2**).

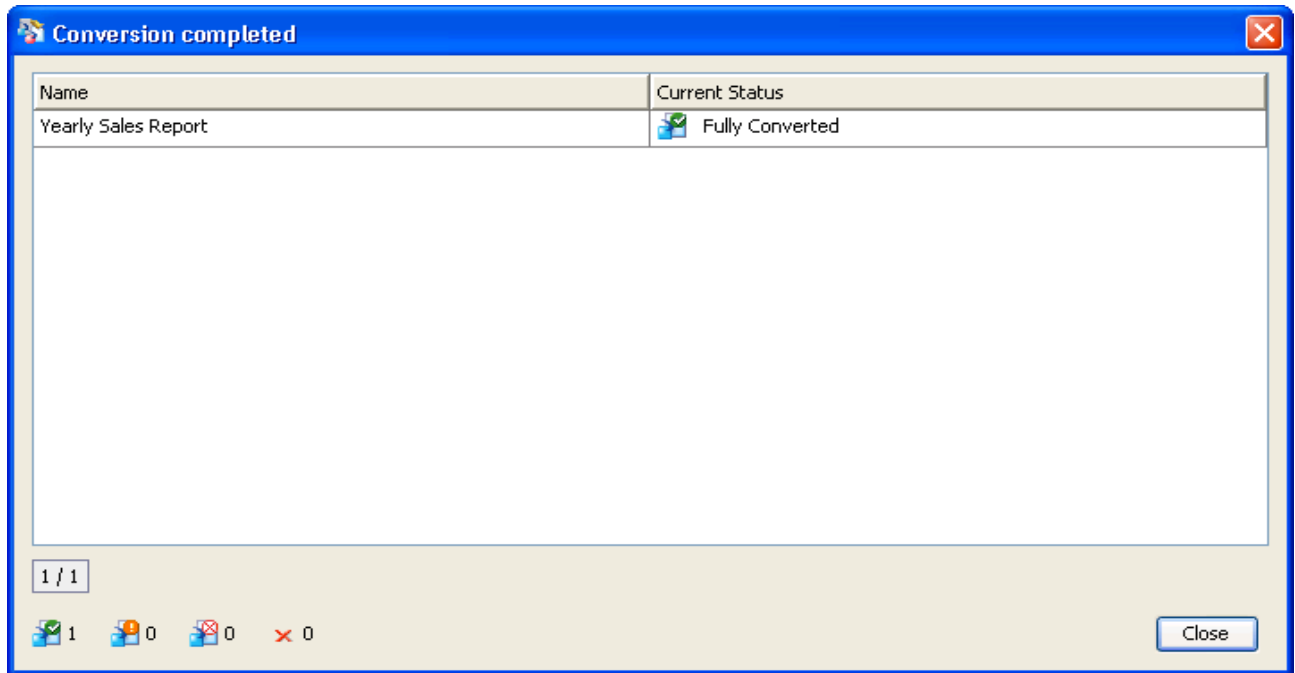
8. Click the **Show unconverted documents only** checkbox to display only the documents which are not converted (**Box 3**).

If planning to do conversion later, save the list of reports for conversion to a file in a XML format and open this file later to populate this list.

9. Click **Save List** to save the selected documents for conversion list to a file in a XML format. **Box 4** details the list of documents selected to convert.
10. Click **Open List** to open this file to populate the saved list of documents for conversion (**Box 5**).
11. Click the **Convert documents containing free-hand SQL / stored procedures** checkbox if the list of reports to be converted includes one or more reports containing free-hand SQL / stored procedure (**Box 6**). If you do not select this checkbox, documents containing free-hand SQL / stored procedure are not converted.



12. Click **Next** to start converting the selected documents for conversion.



13. Click **Close** to move to next screen.

## Compare and save documents

1. Compare and save the conversion results in audit database. **Detail 1** displays the status of the conversion result.

Report Conversion Tool - [Administrator-@ sitalenovo-78]

**Save Conversion Results in Audit Database (2/4)** **1**

Conversion Results

Fully Converted	Partially Converted	Not Converted
<b>1 (100.0%)</b> <b>2</b>	0 (0.0%)	0 (0.0%)

Compare fully converted documents **3**

Audit Settings

Save conversion results in audit database

Select the audit connection to use to save conversion results: Conversion Audit Connection

Delete all rows of the audit table before inserting new rows

Keep previous rows in audit table

You can enter a comment that will be inserted in the Audit table for each row:

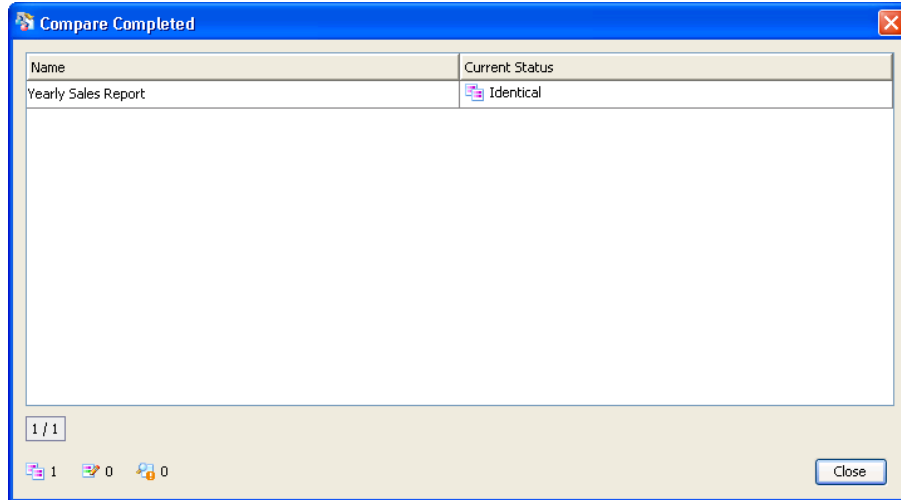
**4**  
Demo Conversion

< Previous    Next >    Cancel    Help

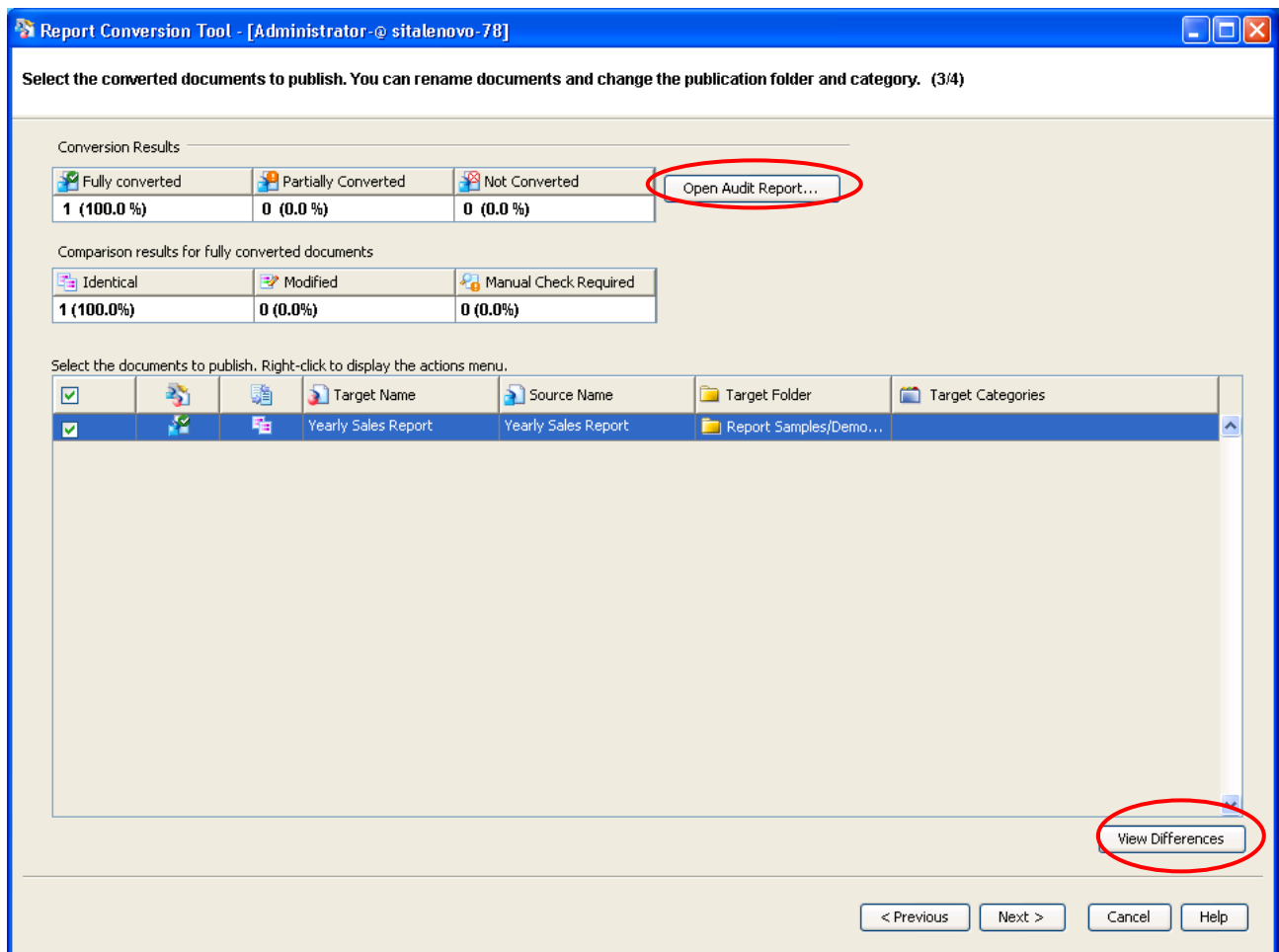
2. Click the **Compare fully converted documents** checkbox to compare fully converted documents with original documents (**Detail 2**).
3. Click the **Save conversion results in audit database** checkbox to save the conversion results in audit database by selecting the available audit connections (**Box 3**).
  - Radio button **Delete all rows of the audit table before inserting new rows** clears existing data in the audit table before auditing the current conversion (user specific).
  - Radio button **Keep previous rows in audit table** appends new rows to the existing audit tables.
  - Provide a comment, if needed to maintain in the audit table for each row of a specific conversion (**Box 4**).



4. Click **Next** to start comparing the converted documents with original documents. Click **Close** to move next screen.



5. Select the converted documents to publish. If needed, rename the converted documents and change the publication folder and category.



6. Click **Open Audit Report** to view audit report. By clicking this, it requests the CMS server details, by inputting server name, username, password and authentication. It opens an audit report in InfoView.

**High Level Conversion Status Across All Documents**

Number of documents

Conversion status	Number of documents
Fully Converted	80.00%
Partially Converted	10.00%
Not Converted	10.00%

**Document Summary**

**General**

Document name: **Report Conversion Tool Audit Statistics Report**

Creator: **Administrator**

Last modified by: **Administrator**

Description:

Keywords:

Document locale: English (United States)

Creation date: January 12, 2007 2:37:55 PM GMT+05:30

Last refresh date: January 16, 2008 2:46:06 AM GMT+05:30

**Document Properties**

Enhanced viewing mode: Off

Refresh on open: Off

Permanent regional: Off

**Conversion Overview** | Not converted documents | Partially converted documents

Refresh Date: January 16, 2008 2:46:06 AM GMT+05:30

7. Click **View Differences** to view the changes occurred during conversion in source view and target views separately.

**Delta Viewer**

File Options Views About

Colour Codes: Modified Removed Inserted Identical

Yearly Sales Report

Tree Panel

Map Data

Yearly Sales Report

Report1

Yearly Sales Report

VTable 22

Split View

Source View ( XI 3.0)

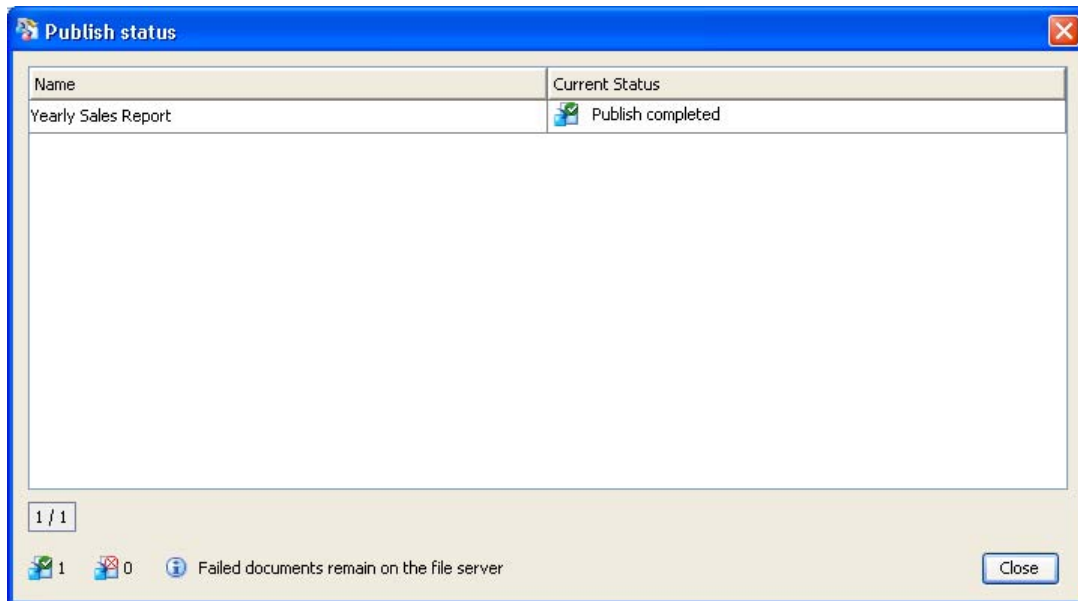
Target View ( XI 3.0)

Details:

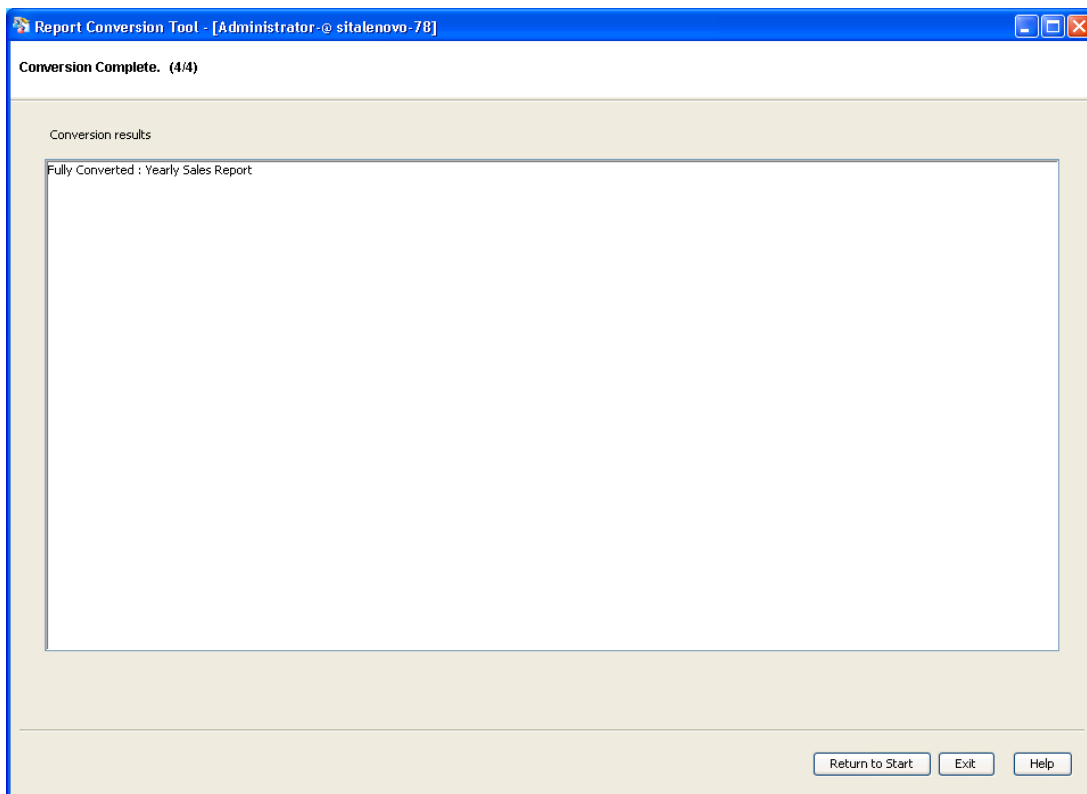
	Source View ( XI 3.0)	Target View ( XI 3.0)
1	Report Name Report1	Report Name Report1
2	TOTAL NO OF BLOCKS 1	TOTAL NO OF BLOCKS 1
3	NO OF UNIDENTICAL BLOCKS 0	NO OF UNIDENTICAL BLOCKS 0
4	NO OF IDENTICAL BLOCKS 1	NO OF IDENTICAL BLOCKS 1
5	NO OF HTABLES 0	NO OF HTABLES 0
6	NO OF VTABLES 1	NO OF VTABLES 1
7	NO OF XTABLES 0	NO OF XTABLES 0
8	NO OF GRAPHS 0	NO OF GRAPHS 0
9	NO OF SECTIONS 0	NO OF SECTIONS 0

Slice Dice Panel

- Click **Next** to move to final screen to start publishing the converted documents into repository.



- Click **Close** to end the conversion.



- Click **Exit** to exit form Report Conversion Tool, or click **Return to Start** to move to the first screen of the tool.

## Limitations

The following are the limitations of Report Conversion Tool:

- This tool is available from and works on SAP BusinessObjects Enterprise XI 3.x platform.
- It runs on Windows platform.
- If you are converting previous version of BusinessObjects Desktop Intelligence reports, first migrate to BusinessObjects Enterprise 3.x version using Import Wizard and then convert them to Web Intelligence format.

## Related Content

[Report Conversion Tool Guide](#)

## Disclaimer and Liability Notice

This document may discuss sample coding or other information that does not include SAP official interfaces and therefore is not supported by SAP. Changes made based on this information are not supported and can be overwritten during an upgrade.

SAP will not be held liable for any damages caused by using or misusing the information, code or methods suggested in this document, and anyone using these methods does so at his/her own risk.

SAP offers no guarantees and assumes no responsibility or liability of any type with respect to the content of this technical article or code sample, including any liability resulting from incompatibility between the content within this document and the materials and services offered by SAP. You agree that you will not hold, or seek to hold, SAP responsible or liable with respect to the content of this document.