

Business One in Action - Why does the Trial Balance Report go out-of-balance?



Applies to:

SAP Business One, [Accounting](#), [Reporting](#)

Summary:

This article shows the common causes of an out-of-balance Trial Balance Report.

Author: Lorna Real, Senior Support Consultant, GSC, SAP Business One

Company: SAP

Created on: December 2009

Author Bio:

Lorna Real joined SAP in 2007 and is currently active as Senior Support Consultant for SAP Business One. She has worked as both technical and business consultant. She authored this article as a direct response to a partner enquiry during the Expert-on-Phone project, where she consulted on mainly Logistics and Finance related topics.

Table of Contents

Why does the Trial Balance Report go out-of-balance?	3
Related Contents	8
Copyright	9

Why does the Trial Balance Report go out-of-balance?

EES: [Troubleshooting Issues Arising Out of Year End Closing \(Delivered 14.12.2007\)](#)

The screenshot shows the SAP Trial Balance report for the period from 01.01.08 to 31.12.08. The report is titled 'Local Currency - British Pound'. The 'Total' row is highlighted with a red box, showing a debit of 277,777.74086, a credit of 289,777.74086, and a balance of -12,000.00000. The 'OK' button is visible at the bottom left.

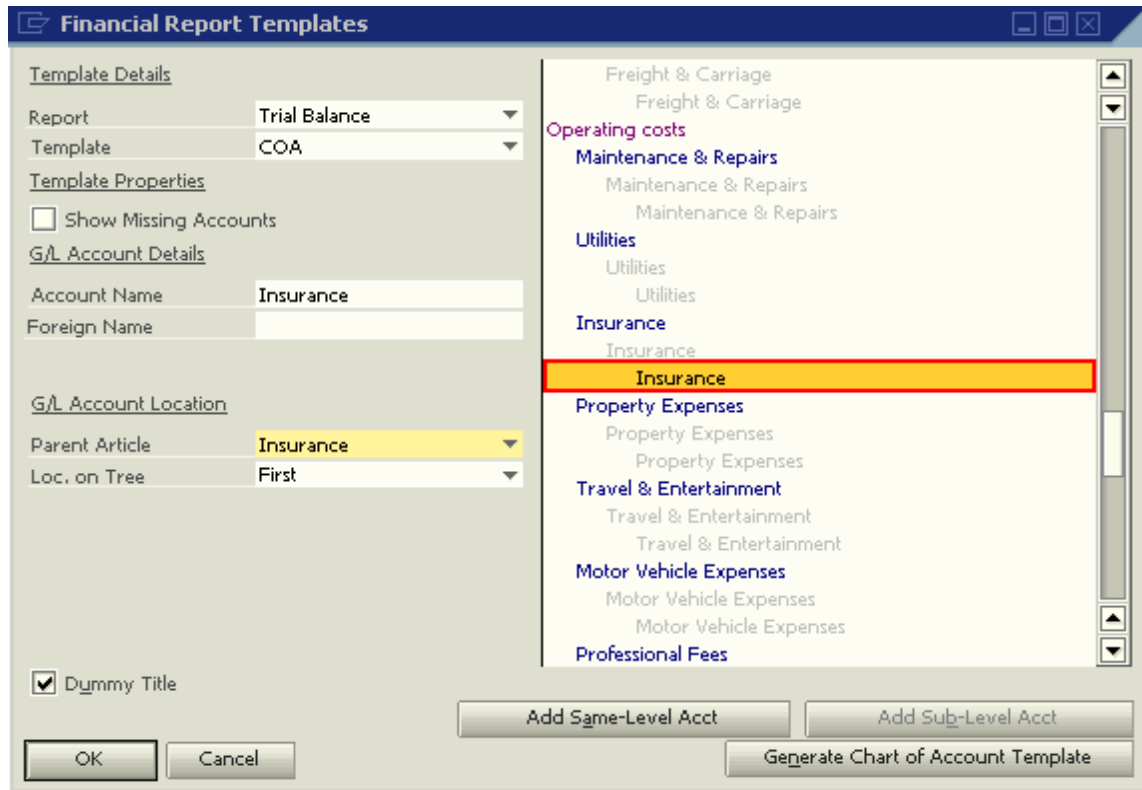
Name	Debit	Credit	Balance
Total Operating costs	1,071.04168		1,071.04168
Non-operating income and expenditur			
Total Non-operating income and expel			
Taxation and Extraordinary Items			
Total Taxation and Extraordinary Item			
Total	277,777.74086	289,777.74086	-12,000.00000

The most common causes of unbalanced Trial Balance Report are as follow:

- I. **Cause:** The Trial Balance Report template is not updated for new G/L Accounts created in the 'Chart of Accounts' function.

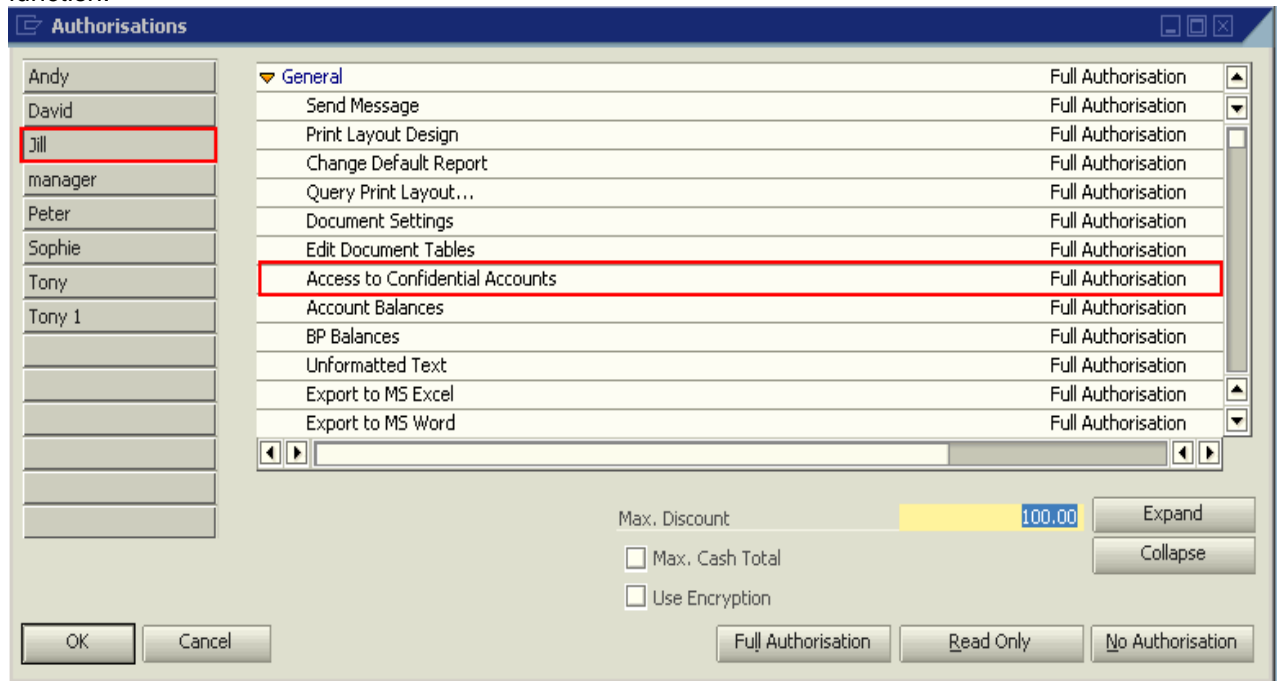
Solution:

1. Access the 'Financial Report Templates' function. Then, select the Trial Balance Template used to generate the report.
2. In the right-pane of the window, highlight a G/L Account group.



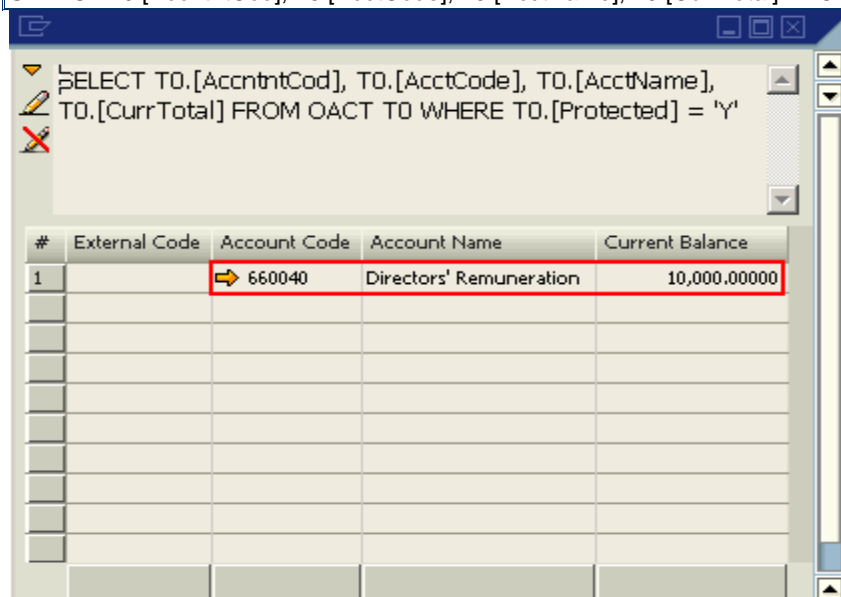
II. **Cause:** The user generating the 'Trial Balance Report' does not have authorisation to access 'Confidential Accounts'.

Solution: Verify the access in the 'General Authorizations' function. Only a 'Super-user' can access this function.



To generate a list of confidential accounts, use this query:

```
SELECT T0.[AcctntCod], T0.[AcctCode], T0.[AcctName], T0.[CurrTotal] FROM OACT T0 WHERE T0.[Protected] = 'Y'
```



Hence, the out-of-balance amount in the 'Trial Balance Report' is caused by the following:

Cause	Account Code	Amount
Missing Account in Template	615010	GBP 2,000
Confidential Account	660040	GBP 10,000
Total Out-of-Balance Amount		GBP 12,000

III. **Cause:** Some journal entries may contain different 'Posting Dates' in the journal rows.

Solution: SAP Business One provides flexibility of allowing the rows in the journal entries to have different 'Posting Dates'. This is only feasible in certain scenarios. To ensure that journal entries are always posted with consistent posting dates, select the 'Block Posting Date Editing per Row' option in the Document Settings -> Per Document Tab -> Journal Entry.

To generate a list of journal entries with different 'Posting Dates' in the rows, use this query:

```
SELECT T1.[TransId] [Journal Entry No.], T1.[Account], T1.[Debit], T1.[Credit], T1.[RefDate] [JE Line Posting Date], T0.[RefDate] [JE Header Posting Date] FROM OJDT T0 INNER JOIN JD1 T1 ON T0.TransId = T1.TransId WHERE T0.[RefDate] <> T1.[RefDate]
```

Related Contents

- [SAP Business One in Action Catalog Page](#)
- EES: [Troubleshooting Issues Arising Out of Year End Closing \(Delivered 14.12.2007\)](#)
- For more information, visit the [Business One homepage](#).

Copyright

© Copyright 2009 SAP AG. All rights reserved.

No part of this publication may be reproduced or transmitted in any form or for any purpose without the express permission of SAP AG. The information contained herein may be changed without prior notice.

Some software products marketed by SAP AG and its distributors contain proprietary software components of other software vendors.

Microsoft, Windows, Excel, Outlook, and PowerPoint are registered trademarks of Microsoft Corporation.

IBM, DB2, DB2 Universal Database, System i, System i5, System p, System p5, System x, System z, System z10, System z9, z10, z9, iSeries, pSeries, xSeries, zSeries, eServer, z/VM, z/OS, i5/OS, S/390, OS/390, OS/400, AS/400, S/390 Parallel Enterprise Server, PowerVM, Power Architecture, POWER6+, POWER6, POWER5+, POWER5, POWER, OpenPower, PowerPC, BatchPipes, BladeCenter, System Storage, GPFS, HACMP, RETAIN, DB2 Connect, RACF, Redbooks, OS/2, Parallel Sysplex, MVS/ESA, AIX, Intelligent Miner, WebSphere, Netfinity, Tivoli and Informix are trademarks or registered trademarks of IBM Corporation.

Linux is the registered trademark of Linus Torvalds in the U.S. and other countries.

Adobe, the Adobe logo, Acrobat, PostScript, and Reader are either trademarks or registered trademarks of Adobe Systems Incorporated in the United States and/or other countries.

Oracle is a registered trademark of Oracle Corporation.

UNIX, X/Open, OSF/1, and Motif are registered trademarks of the Open Group.

Citrix, ICA, Program Neighborhood, MetaFrame, WinFrame, VideoFrame, and MultiWin are trademarks or registered trademarks of Citrix Systems, Inc.

HTML, XML, XHTML and W3C are trademarks or registered trademarks of W3C®, World Wide Web Consortium, Massachusetts Institute of Technology.

Java is a registered trademark of Sun Microsystems, Inc.

JavaScript is a registered trademark of Sun Microsystems, Inc., used under license for technology invented and implemented by Netscape.

SAP, R/3, SAP NetWeaver, Duet, PartnerEdge, ByDesign, SAP Business ByDesign, and other SAP products and services mentioned herein as well as their respective logos are trademarks or registered trademarks of SAP AG in Germany and other countries.

Business Objects and the Business Objects logo, BusinessObjects, Crystal Reports, Crystal Decisions, Web Intelligence, Xcelsius, and other Business Objects products and services mentioned herein as well as their respective logos are trademarks or registered trademarks of Business Objects S.A. in the United States and in other countries. Business Objects is an SAP company.

All other product and service names mentioned are the trademarks of their respective companies. Data contained in this document serves informational purposes only. National product specifications may vary.

These materials are subject to change without notice. These materials are provided by SAP AG and its affiliated companies ("SAP Group") for informational purposes only, without representation or warranty of any kind, and SAP Group shall not be liable for errors or omissions with respect to the materials. The only warranties for SAP Group products and services are those that are set forth in the express warranty statements accompanying such products and services, if any. Nothing herein should be construed as constituting an additional warranty.