

Integration OF EP with BI Installed on Same Host



Applies to:

SAP Netweaver 7.0 SP2, usage type ABAP+JAVA. For more information, visit the [Portal and Collaboration homepage](#).

Summary

This document is provided step by step guide to integrate EP with BW.

Author: Naveed Ahmed

Company: KESC

Created on: 20 Oct 2010

Author Bio



Naveed Ahmed work at KESC Designation SAP BASIS Coordinator Company.

Table of Contents

Enable SSO (Single-Sign on) in AS-ABAP (BI) system	3
Login/create_sso2_ticket=2	3
login/accept_sso2_ticket=1	3
Procedure:	4
Checking the SLD configuration	4
Checking the AS-ABAP (BI) system registration in SLD	5
Create Logon Group in AS-ABAP (BI) system	6
Activate Bex Services in AS-ABAP (BW) system	6
Regenerate SAP Logon ticket in AS-JAVA (Only valid for releases before SR2 /SPS09)	7
Run template.	9
Related Content	10
Disclaimer and Liability Notice	11

Enable SSO (Single-Sign on) in AS-ABAP (BI) system

To allow SSO for the AS-ABAP (BI) system, the following profile parameters in the "default" profile have to be set:

Login to AS-ABAP -> Start TA /rz10 -> Menu: Utilities -> Import profiles

-> of all active servers

Profile: -> Select: Default -> Mark: Extended Maintenance -> Change

Add the both parameter

-> Save and Activate the profile -> Restart the system

Login/create_sso2_ticket=2

Parameter name: login/create_sso2_ticket Status: Active Seq. no.: 1

Parameter val.: 2

Unsubstituted standard value: 0

Substituted standard value: 0

Comment:

1	#parameter created	by: DDIC	13.07.2010 14:15:51
	#		

login/accept_sso2_ticket=1

Parameter name: login/accept_sso2_ticket Status: Active Seq. no.: 1

Parameter val.: 1

Unsubstituted standard value: 0

Substituted standard value: 0

Comment:

1	#parameter created	by: DDIC	13.07.2010 14:12:58
	#		

Procedure:

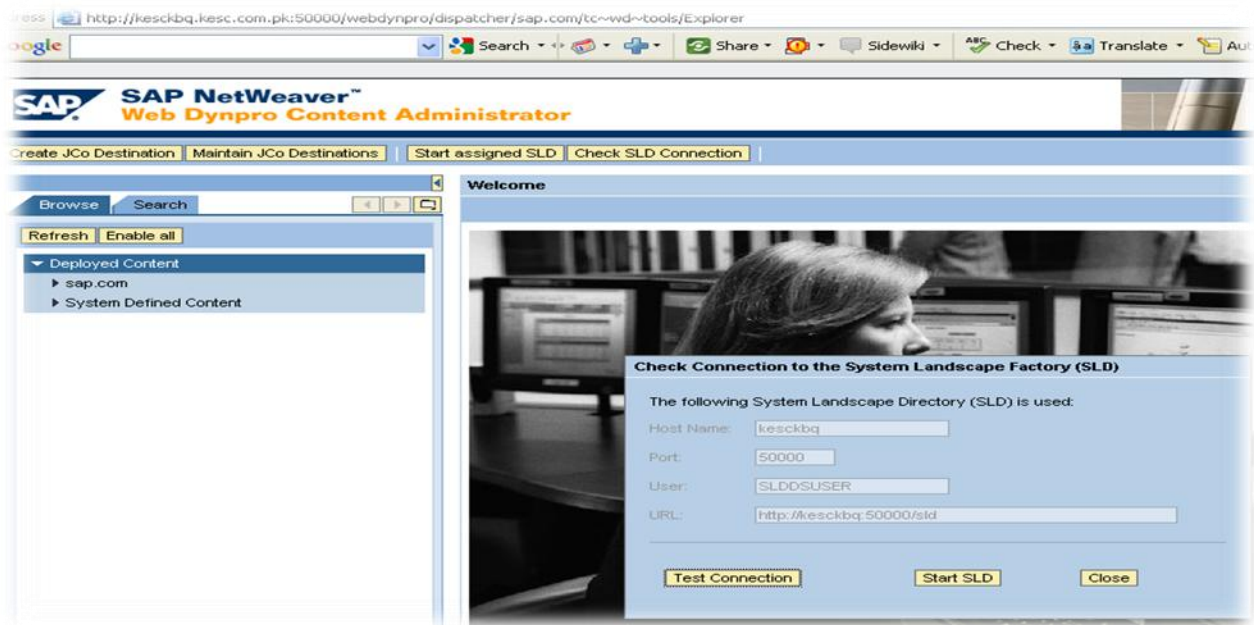
Checking the SLD configuration

When configuring the Webdynpro JCo destination connectivity the configuration of SLD your system is pointing (local or central) should work properly.

Procedure:

Logon to the Web Dynpro Welcome page

<http://xxxxkbq.xxxx.com.pk:50000/webdynpro/welcome/Welcome.jsp> and then go to Content Administrator -> Check SLD Connection -> Test Connection.



The relevant connection settings will be brought out before. Make sure they are correct. The test result is listed on the bottom of the page.

If the test fails, verify and adjust the SLD settings in the visual admin:

1. Go to sld data supplier -> tab Run time -> tab(bottom) http settings, adjust all the parameters.
2. Go to sld data supplier -> tab Run time -> tab (bottom) CIM Client

Generation Settings adjust all the parameters.

3. Go to configuration adapter -> CTC -> Property sheet SystemProperties, adjust all the SLD relevante settings.
4. Retest.

Checking the AS-ABAP (BI) system registration in SLD

When configuring the Webdynpro Jco destination connectivity the AS-ABAP (BI) system must be configured in the SLD.

Procedure:

Logon to the SLD: `http://<host>:<port>/slid`. (Your configured SLD (central or local SLD))

Please check in Home -> Technical Systems -> select type ABAP. This should have configuration of your ABAP (BI) system.

The screenshot shows the SAP NetWeaver System Landscape Directory (SLD) interface. The browser address bar displays `http://kesckbq.kesc.com.pk:50000/webdynpro/dispatcher/sap.com/tc~slid~wd~main/Main`. The page title is "SAP NetWeaver™ System Landscape Directory". The navigation menu includes "Home", "Administration", "Log Off", "Help", and "About". The main section is titled "View and Define Systems and Servers" and contains a "Technical Systems" tab. Under "Technical Systems", the "Technical System Type" is set to "Web AS ABAP". A table lists the technical systems, with one entry: "KBQ on kesckbq" on host "kesckbq". Below the table, the "ABAP Technical System Details for: KBQ on kesckbq" are shown. The "General" tab is active, displaying fields for "System Name" (KBQ), "System Home" (kesckbq), "Installation Number" (0020237350), "Release" (700), "Description", "Administration Contact", and "TMS Domain" (DOMAIN_KBQ). A "Save" button is visible at the top left of the details section.

If it is missing, logon to your ABAP (BI) system -> goto transaction RZ70.

fill in the SLD bridge: gateway info -> Activate -> Start data collection.

If a error message like "ABAP backend doesn't exist in the SLD" pops up while running the template installer, there could be different possibilities for this error. Starting SP14 more detailed error sources will be popped up. For lower SPS the exact reason of the error can be found in the defaulttrace file.

Create Logon Group in AS-ABAP (BI) system

When configuring the connectivity between the AS-ABAP (BI) and AS-JAVA system, a "Logon Group" must be provided for the user input.

Procedure:

Login to AS-ABAP -> Start TA /smlg -> Create -> Enter Logon Group name(e.g.PUBLIC) and select an Instance -> Copy -> Save

Activate

Note: please add sapmsSID 3600/tcp entry in /etc/services

Activate Bex Services in AS-ABAP (BW) system

This step is not necessary for SPS with number higher than SP14.

In order to get Services displayed in the portal, they have to be enabled and activated.

Procedure:

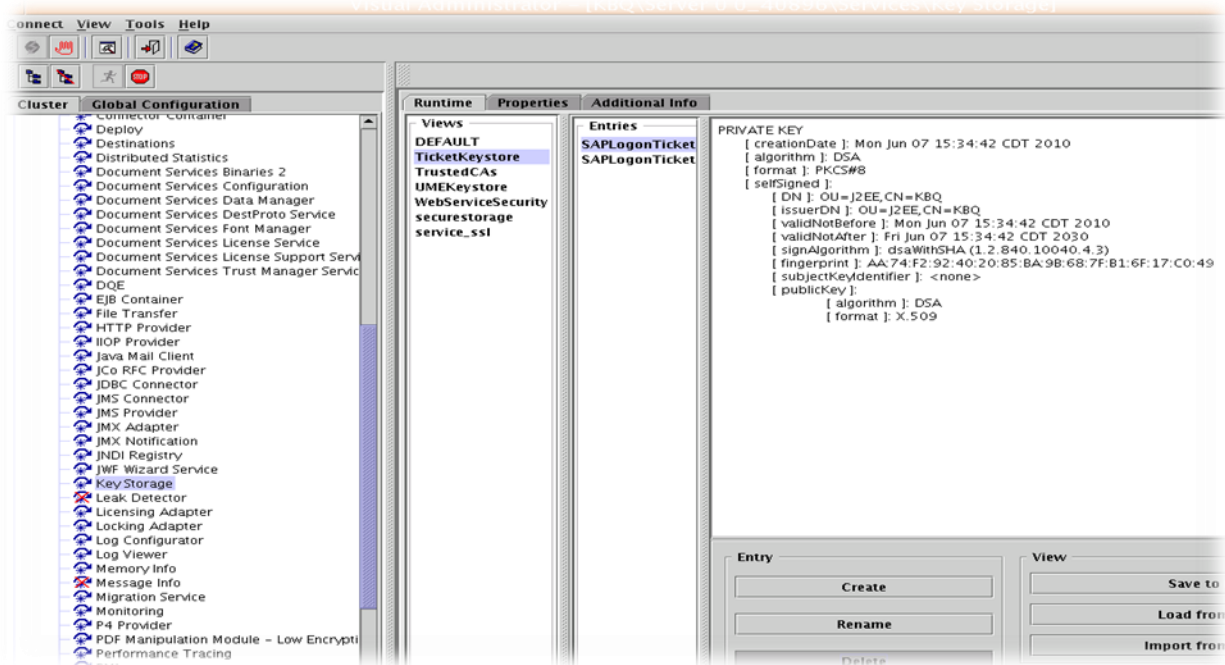
Login to AS-ABAP -> Start TA /sicf -> (if Screen Maintain ICFXXX; ICFXXX; appears -> Continue with Execute) -> Navigate: Default_host / sap / bw -> Mark "bw": Right-Click -> Activate Service -> Press "Y" to activate the whole tree

Regenerate SAP Logon ticket in AS-JAVA (Only valid for releases before SR2 /SPS09)

Unfortunately when you install a AS-ABAP and AS-JAVA system on one host the tickets from AS-ABAP and AS-JAVA have the same common name (CN) and will not be imported when exchanging the tickets. Therefore you have to regenerate the SAPLogonticket in the AS-JAVA system.

Procedure:

Login with the Visual Administrator to the J2ee Engine -> Navigate: Server / Services / Key Storage / TicketKeystore -> Mark and Delete the both tickets: "SAPLogonTicketKeypair" and "SAPLogonTicketKeypair-cert"



-> Create a new ticket with the following values / settings:

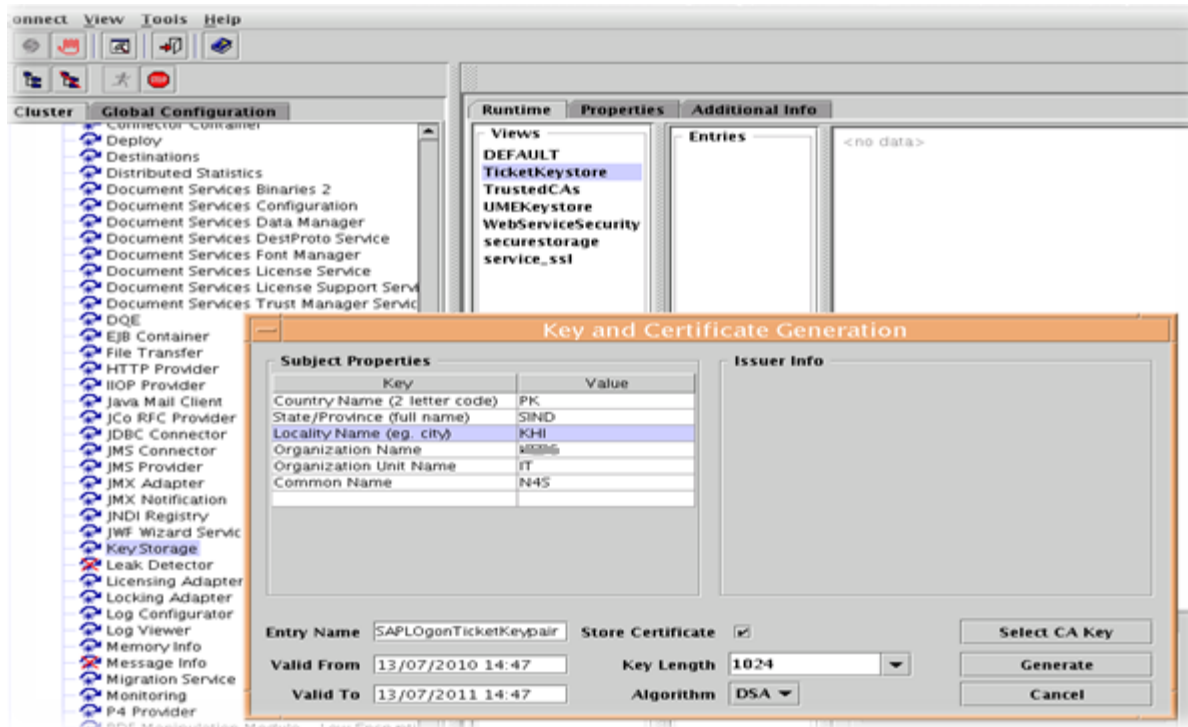
Country Name: <Value> / State: <Value> / Locality Name: <Value> /

Organization Name: <Value> / Organization Unit Name: <Value> / Common Name:

<HOST>_<PORT>

Entry Name must be "SAPLogonTicketKeypair"

Store certificate: X




<http://xxxxkbq.xxxx.com.pk:50000/nwa>

Run template.


Protocol Type


Use Https 


SLD Check


Perform the SLD checks 


BI ABAP


ABAP Administration User: 


Administration User Password: 


ABAP Application Server Host: 


Domain Name of ABAP Host: 


System ID of ABAP System: 


ABAP System/Instance Number: 

ABAP Client: 

Logon Group: 

User for BI Metadata in WebDynpro: 

Password of User for BI Metadata in WebDynpro: 

Use SAP Export Library (PDF) 

JAVA

Java/J2EE Administration User: 

Administration User Password: 

Domain Name of Java/J2EE Host: 

To check integration error use the following link.

<http://xxxxkbq.xxx.com.pk:50000/irj/servlet/prt/portal/prtroot/com.sap.ip.bi.supportdesk.default>

Related Content

[Wizard-Based Configuration of BI Java](#)

[SAP NetWeaver 7.0 BIInstallation Java Stack](#)

[SAP BI Diagnostics & Support Desk Tool](#)

[Pre-version of SAP NetWeaver BI Diagnostics&SupportDesk Tool](#)

For more information, visit the [Portal and Collaboration homepage](#).

Disclaimer and Liability Notice

This document may discuss sample coding or other information that does not include SAP official interfaces and therefore is not supported by SAP. Changes made based on this information are not supported and can be overwritten during an upgrade.

SAP will not be held liable for any damages caused by using or misusing the information, code or methods suggested in this document, and anyone using these methods does so at his/her own risk.

SAP offers no guarantees and assumes no responsibility or liability of any type with respect to the content of this technical article or code sample, including any liability resulting from incompatibility between the content within this document and the materials and services offered by SAP. You agree that you will not hold, or seek to hold, SAP responsible or liable with respect to the content of this document.