

Version Management of ABAP Programs



Applies to:

SAP Netweaver 2004s.

For more information, visit the [ABAP homepage](#).

Summary

In some companies we may have different systems for Development, Quality Control and Production.

Writing a new program from scratch in Development will never be a problem for developers.

However, sometimes someone else writes a code and the program is maintained, changed, or enhanced by some other developers.

In those cases, there is a great possibility that we start changing or updating wrong versions of the program.

In addition, manual comparison of the ABAP programs can lead to a waste of time, which can be avoided.

Author: Mukesh Sharma

Company: Infosys Technologies Limited

Created on: 11 August 2009

Author Bio



Mukesh Sharma is working, as Technology Analyst in SAP BI with Infosys Technologies Limited. He is SAP Netweaver 2004s certified solution consultant. His area of expertise is in HR sub modules like Personal Administration and Time.

Table of Contents

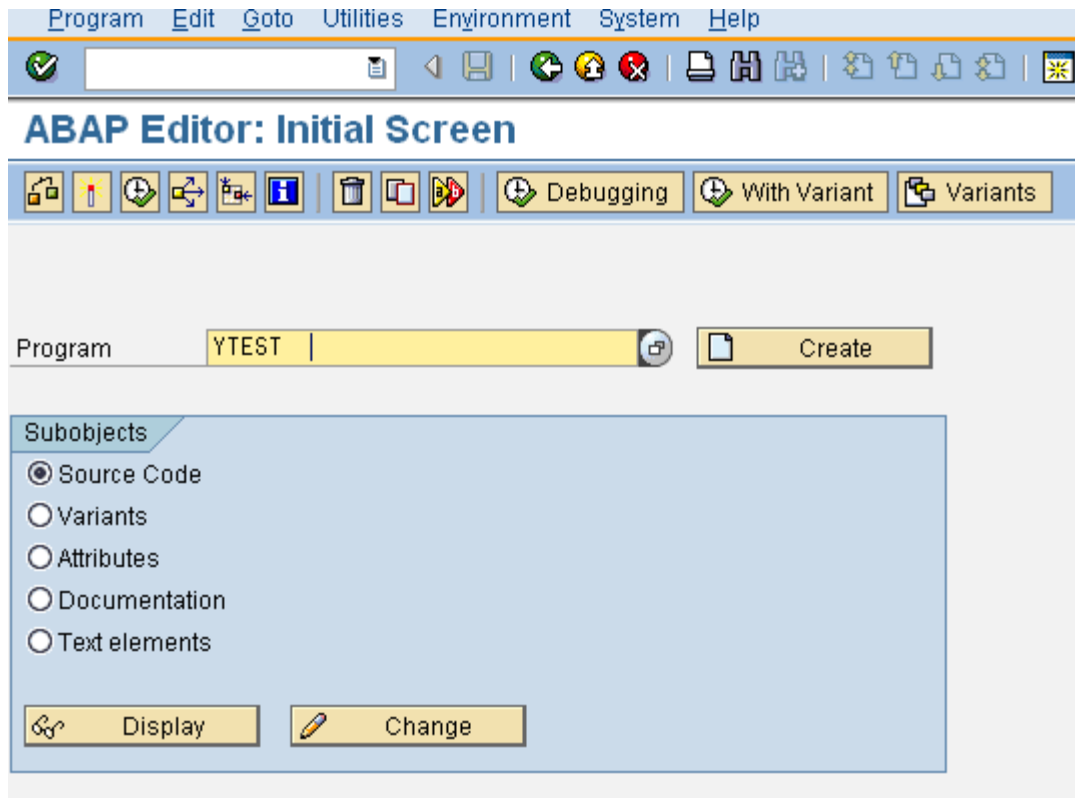
Scenario 1: When a Program with Different Versions Needs to Be Compared	3
When Both the Versions Are in Same System	3
When the Program Versions Are in Different Systems	6
Scenario 2: For Comparison of Two Programs	7
Related Content.....	11
Disclaimer and Liability Notice.....	12

Scenario 1: When a Program with Different Versions Needs to Be Compared

When Both the Versions Are in Same System

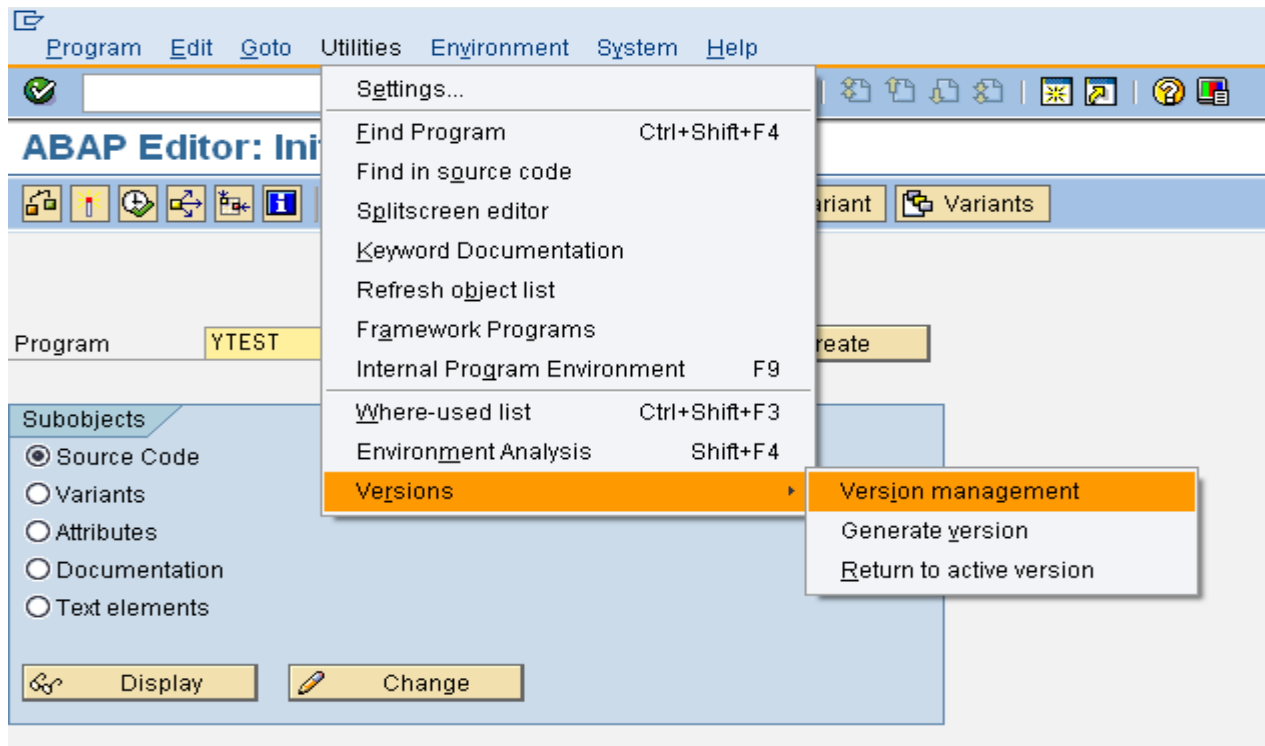
Go to transaction SE38.

Enter the name of the program as per attached screenshot below:



Go to **Utilities** as per the below screenshot:

Then open the options for **VERSIONS**, we will see “**Version Management**”



Once we click on “**Version Management**” we will get a window like as below.

From below screenshot, we will get info about various Transports used for the same program.

In addition we can get lots of other information also like date of last change and etc.

Versions of Object ZEMP_CURR_GENERATE_FILE of Type Report Source Code										
Version	Cat	Fla	SAP	Rel.	Arch	Request	Project	Date	Time	Author
Version(s) in the development database:										
<input checked="" type="checkbox"/>	activ		700			BW1K904136		07/17/2009	10:20:33	MS0471
Version(s) in the version database:										
<input type="checkbox"/>	00007		700			BW1K904095		07/07/2009	12:39:22	HW8216
<input type="checkbox"/>	00006		700			BW1K904061		07/02/2009	08:58:58	AM9378
<input type="checkbox"/>	00005		700			BW1K904055		06/30/2009	10:06:27	AM9378
<input checked="" type="checkbox"/>	00004		700			BW1K904020		06/25/2009	11:56:16	AS5969
<input type="checkbox"/>	00003		700			BW1K903997		06/18/2009	11:02:01	HW8216
<input type="checkbox"/>	00002		700			BW1K903744		05/28/2009	13:50:57	HC7174
<input type="checkbox"/>	00001	S	700					05/28/2009	03:13:00	RX213F

From the above screenshot, we can select the Active version and other versions available to us for comparison.

For instance from above screenshot we have selected Active version and version 0004 to compare.

After checking CHECK BOX click on the icon as below:



To get the code for both the versions we have selected above.

We will see both the codes as below for comparison:

Compare Programs: All

Single-Column/Parallel Settings Next Identical Section Next Difference

Report Source Code: ZEMP_CURR_GENERATE_FILE active version	Report Source Code: ZEMP_CURR_GENERATE_FILE Version 00004
Request: BW1K904136 07/17/2009 MS0471	Request: BW1K904020 06/25/2009 AS596
Text: BW 19848 PRISM July B0 v0	Text: BW: WES : 19318:Maint 0055 / 0039/ 00

```

1  *&
2  *& Report ZEMP_CURR_GENERATE_FILE
3  *&
... .. 11 unchanged lines omitted
15 REPORT zemp_curr_generate_file.
16
17
18 *Create an structure with six columns*****

19 TYPES : BEGIN OF t_job,
20         job TYPE /b10/qjob-job,
21         dateto TYPE /b10/qjob-dateto,
22         datefrom TYPE /b10/qjob-datefrom,
23         zptsr_id TYPE /b10/qjob-/bic/zptsr_id,
24         zpactrgt TYPE /b10/qjob-/bic/zpactrgt,
25         zpanprcnt TYPE /b10/qjob-/bic/zpanprcnt,
26     END OF t_job.
27
28 TYPES: BEGIN OF t_zemp_curr,
... .. 74 unchanged lines omitted
103 zovratcc TYPE string,
104 zlastdtec TYPE string.
105
106 DATA: dtrng TYPE sy-datum,
107         l_start_date TYPE sy-datum.

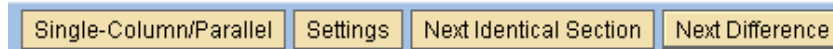
```

```

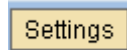
1  *&
2  *& Report ZEMP_CURR_GENERATE_FILE
3  *&
... .. 11 unchanged lines omitted
15 REPORT zemp_curr_generate_file.
16
17
18 *Create an structure with four columns*****
19 *One column to store job, second column to store TS
20 *store valid from and the fourtn column to store va
21 TYPES : BEGIN OF t_job,
22         job TYPE /b10/qjob-job,
23         dateto TYPE /b10/qjob-dateto,
24         datefrom TYPE /b10/qjob-datefrom,
25         zptsr_id TYPE /b10/qjob-/bic/zptsr_id,
26     END OF t_job.
27
28 TYPES: BEGIN OF t_zemp_curr,
... .. 74 unchanged lines omitted
103 zovratcc TYPE string,
104 zlastdtec TYPE string.
105

```

Different options available while comparisons are as follows:



When we click on the Settings Tab as below:



We will get following options , where we can remove comments or indentations or change the display layouts.

Compare Programs: Settings

Display

Single-Column Format

Parallel Display

Display in Splitscreen Editor

Display

Display All

Matches Condensed

Display Differences Only

Line Numbering

Display Line Numbering

Version Comparison

Ignore Indentations

Ignore Comments

When the Program Versions Are in Different Systems

We can also do comparison of the programs that lies in two different systems.

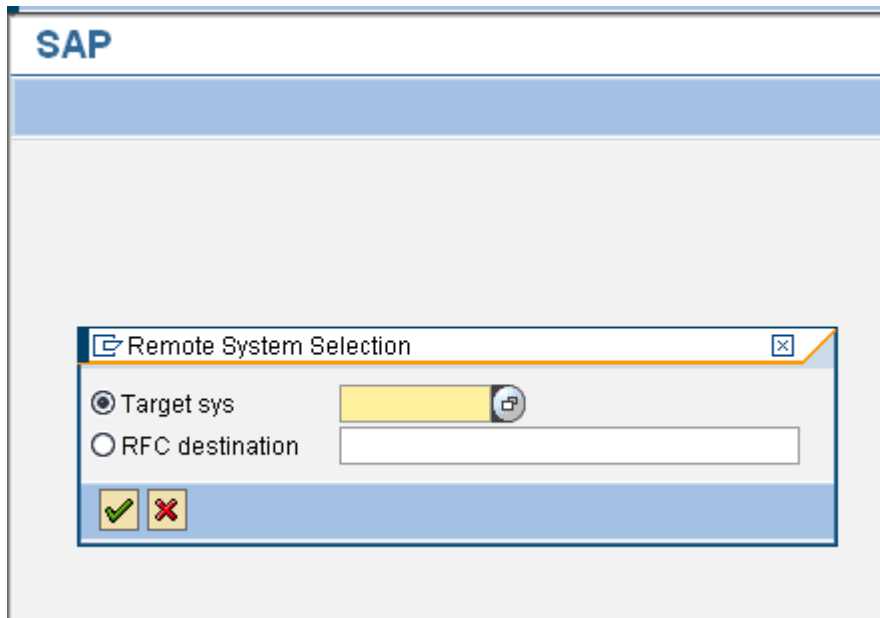
For this, proceed as below:

Click on the below shown icon "Remote Comparison".



Enter the **Target system** for comparison:

We can also use the **RFC destination** from where we need to compare the programs.



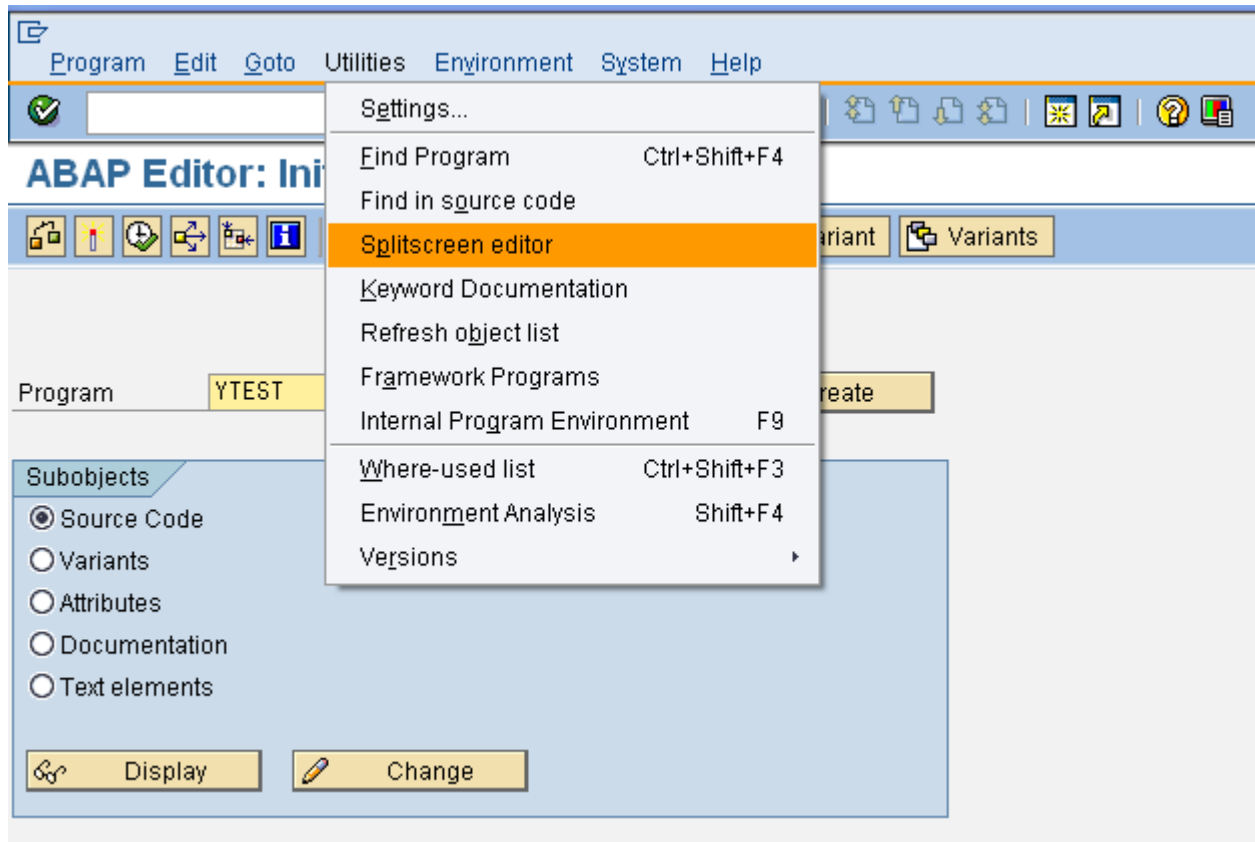
In the above screenshot we need to put either Target system name or RFC Destination in order to compare the program in two different systems.

Limitation with this is we need the RFC destination defined with the system we are comparing the program.

Scenario 2: For Comparison of Two Programs

Go to **Utilities** as per the below screenshot:

Then open the options for “**Splitscreen editor**”



The “**Splitscreen**” option will take us to a screen as below:

ABAP Splitscreen Editor: Initial Screen

Compare Different Systems

Sources To Be Compared

Left-Justified

Program YTEST

Function

Class

Method

Local Class Definition/Types

Macros

Local Class Implementations

Default

Active

Inactive

Right

Program YTEST1

Function

Class

Method

Local Class Definition/Types

Macros

Local Class Implementations

Default

Active

Inactive

Display Change

We have to enter the name of the program with which we want to compare as in below screenshot:

Right

Program YTEST1

Function

Class

Method

Local Class Definition/Types

Macros

Local Class Implementations

Default

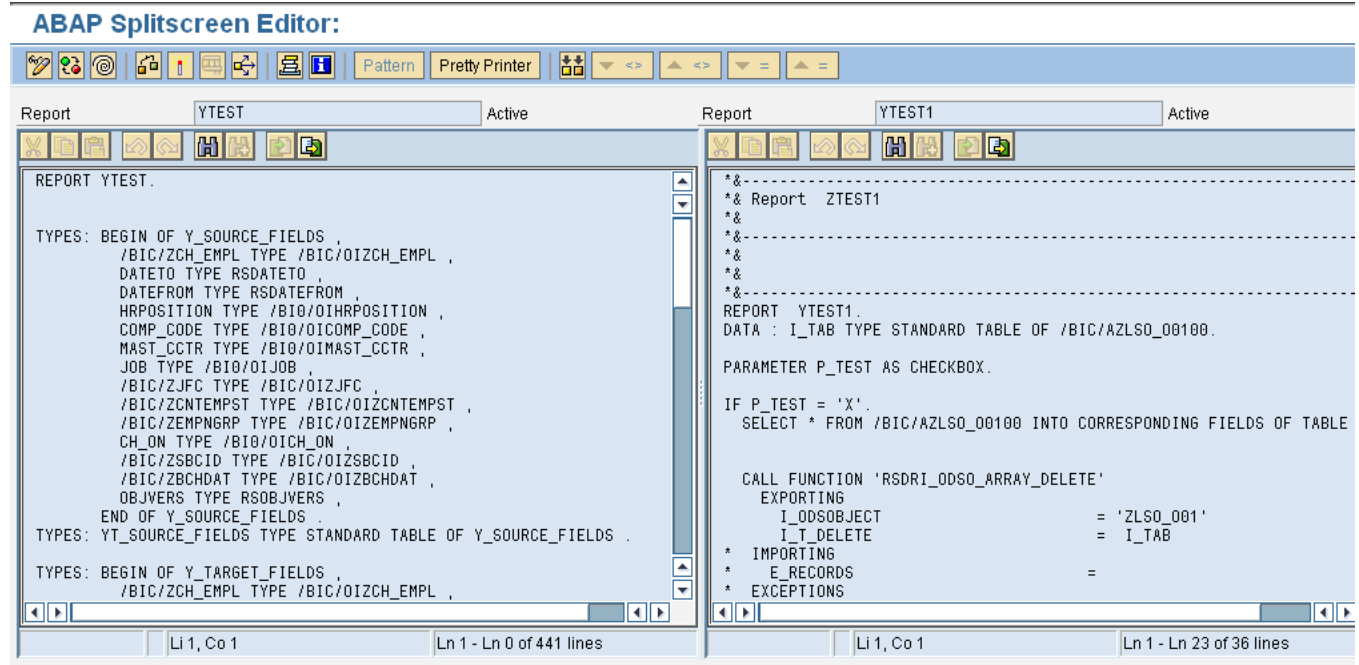
Active

Inactive

We may select version of the program for comparison.

After entering name we may select for display or Change mode of the program.

On selecting the display mode we will come to a screenshot as below:



Use the below icon to start the comparison:

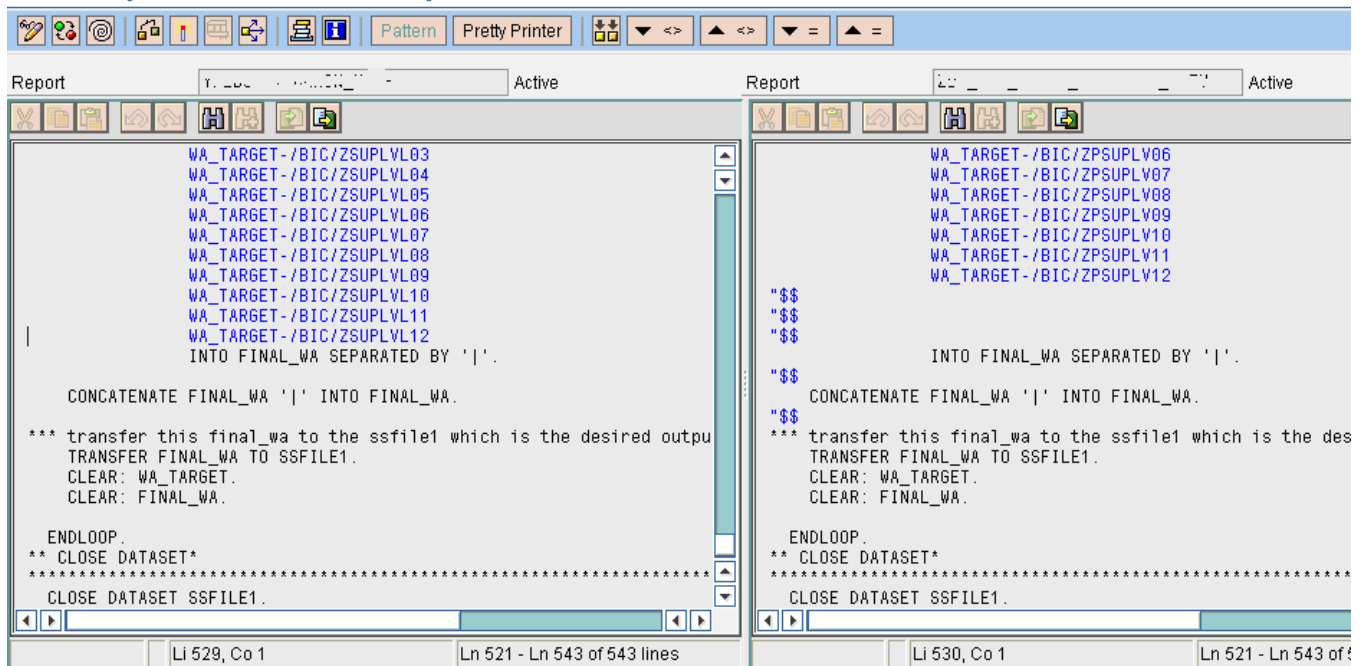


The below mention icons will be used to figure out the mismatch code or the Equal code to drill down or up in the program.



From the below mention screenshot we can get idea as how the comparison goes .The highlighted **portion in blue** will tell us about the line of codes under comparison.

ABAP Splitscreen Editor: Comparison Mode



Conclusion:

By this small knowledge about the availability of the various options in program editor, we can make our code in harmony with other versions of the same program residing in different or same system.

Related Content

<http://www.sdn.sap.com/irj/scn/index?rid=/library/uuid/e0c5d414-bc11-2a10-76b5-bfd294549e6d&overridelayout=true>

<http://www.sdn.sap.com/irj/scn/index?rid=/library/uuid/8e1b5bbe-0601-0010-a28b-c8d964cd0a03>

<http://www.sdn.sap.com/irj/scn/index?rid=/library/uuid/d6dfa210-0a01-0010-fdb3-95bbf075cd4f>

For more information, visit the [ABAP homepage](#).

Disclaimer and Liability Notice

This document may discuss sample coding or other information that does not include SAP official interfaces and therefore is not supported by SAP. Changes made based on this information are not supported and can be overwritten during an upgrade.

SAP will not be held liable for any damages caused by using or misusing the information, code or methods suggested in this document, and anyone using these methods does so at his/her own risk.

SAP offers no guarantees and assumes no responsibility or liability of any type with respect to the content of this technical article or code sample, including any liability resulting from incompatibility between the content within this document and the materials and services offered by SAP. You agree that you will not hold, or seek to hold, SAP responsible or liable with respect to the content of this document.