

How-to Guide
SAP NetWeaver '04s



How To... Install CAF 7.00 (Enhancement: Enable BackUp Log of MaxDB)

Version 1.00 – March 2006

Applicable Releases:
SAP NetWeaver 2004s

© Copyright 2006 SAP AG. All rights reserved.

No part of this publication may be reproduced or transmitted in any form or for any purpose without the express permission of SAP AG. The information contained herein may be changed without prior notice.

Some software products marketed by SAP AG and its distributors contain proprietary software components of other software vendors.

Microsoft, Windows, Outlook, and PowerPoint are registered trademarks of Microsoft Corporation.

IBM, DB2, DB2 Universal Database, OS/2, Parallel Sysplex, MVS/ESA, AIX, S/390, AS/400, OS/390, OS/400, iSeries, pSeries, xSeries, zSeries, z/OS, AFP, Intelligent Miner, WebSphere, Netfinity, Tivoli, and Informix are trademarks or registered trademarks of IBM Corporation in the United States and/or other countries.

Oracle is a registered trademark of Oracle Corporation.

UNIX, X/Open, OSF/1, and Motif are registered trademarks of the Open Group.

Citrix, ICA, Program Neighborhood, MetaFrame, WinFrame, VideoFrame, and MultiWin are trademarks or registered trademarks of Citrix Systems, Inc.

HTML, XML, XHTML and W3C are trademarks or registered trademarks of W3C®, World Wide Web Consortium, Massachusetts Institute of Technology.

Java is a registered trademark of Sun Microsystems, Inc.

JavaScript is a registered trademark of Sun Microsystems, Inc., used under license for technology invented and implemented by Netscape.

MaxDB is a trademark of MySQL AB, Sweden.

contained in this document serves informational purposes only. National product specifications may vary.

These materials are subject to change without notice. These materials are provided by SAP AG and its affiliated companies ("SAP Group") for informational purposes only, without representation or warranty of any kind, and SAP Group shall not be liable for errors or omissions with respect to the materials. The only warranties for SAP Group products and services are those that are set forth in the express warranty statements accompanying such products and services, if any. Nothing herein should be construed as constituting an additional warranty.

These materials are provided "as is" without a warranty of any kind, either express or implied, including but not limited to, the implied warranties of merchantability, fitness for a particular purpose, or non-infringement. SAP shall not be liable for damages of any kind including without limitation direct, special, indirect, or consequential damages that may result from the use of these materials. SAP does not warrant the accuracy or completeness of the information, text, graphics, links or other items contained within these materials. SAP has no control over the information that you may access through the use of hot links contained in these materials and does not endorse your use of third party web pages nor provide any warranty whatsoever relating to third party web pages.

SAP NetWeaver "How-to" Guides are intended to simplify the product implementation. While specific product features and procedures typically are explained in a practical business context, it is not implied that those features and procedures are the only approach in solving a specific business problem using SAP NetWeaver. Should you wish to receive additional information, clarification or support, please refer to SAP Consulting.

Any software coding and/or code lines / strings ("Code") included in this documentation are only examples and are not intended to be used in a productive system environment. The Code is only intended better explain and visualize the

SAP, R/3, mySAP, mySAP.com, xApps, xApp, SAP NetWeaver, and other SAP products and services mentioned herein as well as their respective logos are trademarks or registered trademarks of SAP AG in Germany and in several other countries all over the world. All other product and service names mentioned are the trademarks of their respective companies.
Data

syntax and phrasing rules of certain coding. SAP does not warrant the correctness and completeness of the Code given herein, and SAP shall not be liable for errors or damages caused by the usage of the Code, except if such damages were caused by SAP intentionally or grossly negligent.

1 Scenario

If you perform installation of NW Application Server with MaxDB using Master Installer, and the installation hangs (takes too long) during some of the last tasks the reason may be that the MaxDB *Log* file is full.

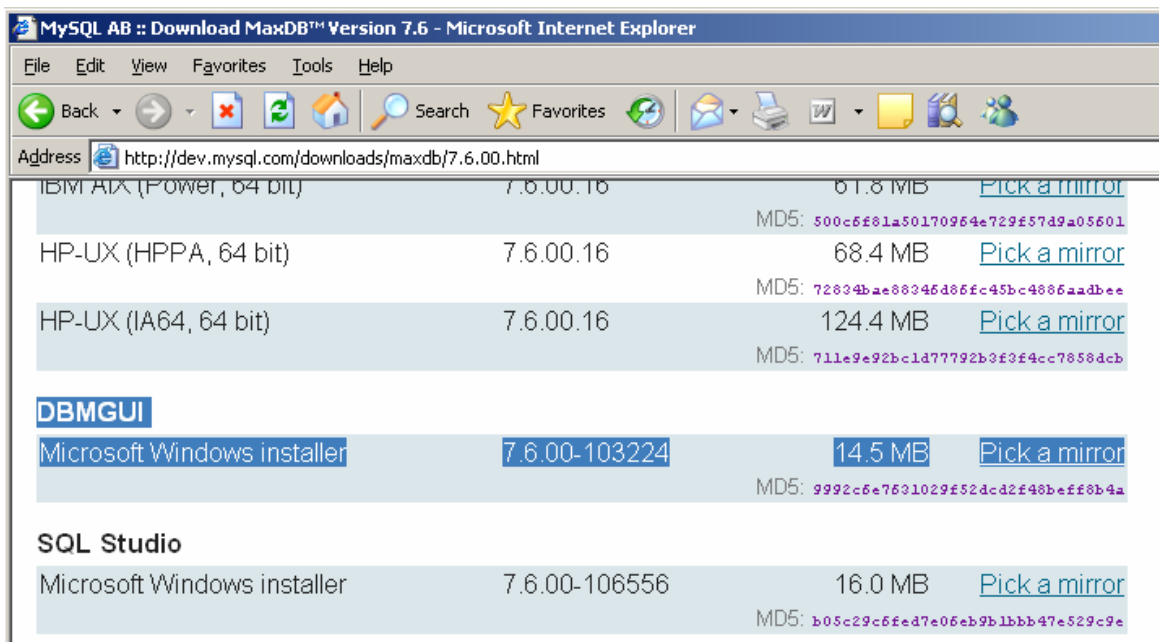
2 Prerequisites

To monitor the MaxDB installation and to control the Data Base instances you need MaxDB Data Base Manager.



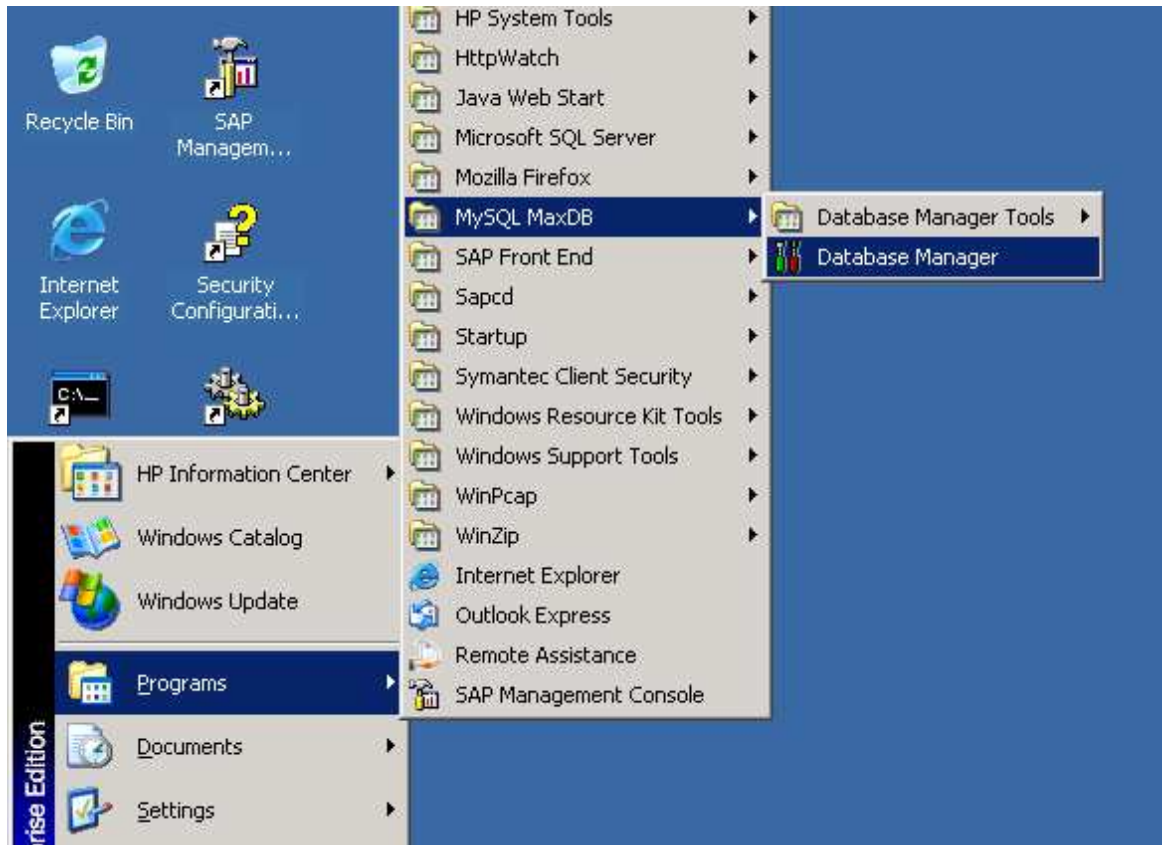
Database manager can be downloaded from here:

<http://dev.mysql.com/downloads/maxdb/7.6.00.html>

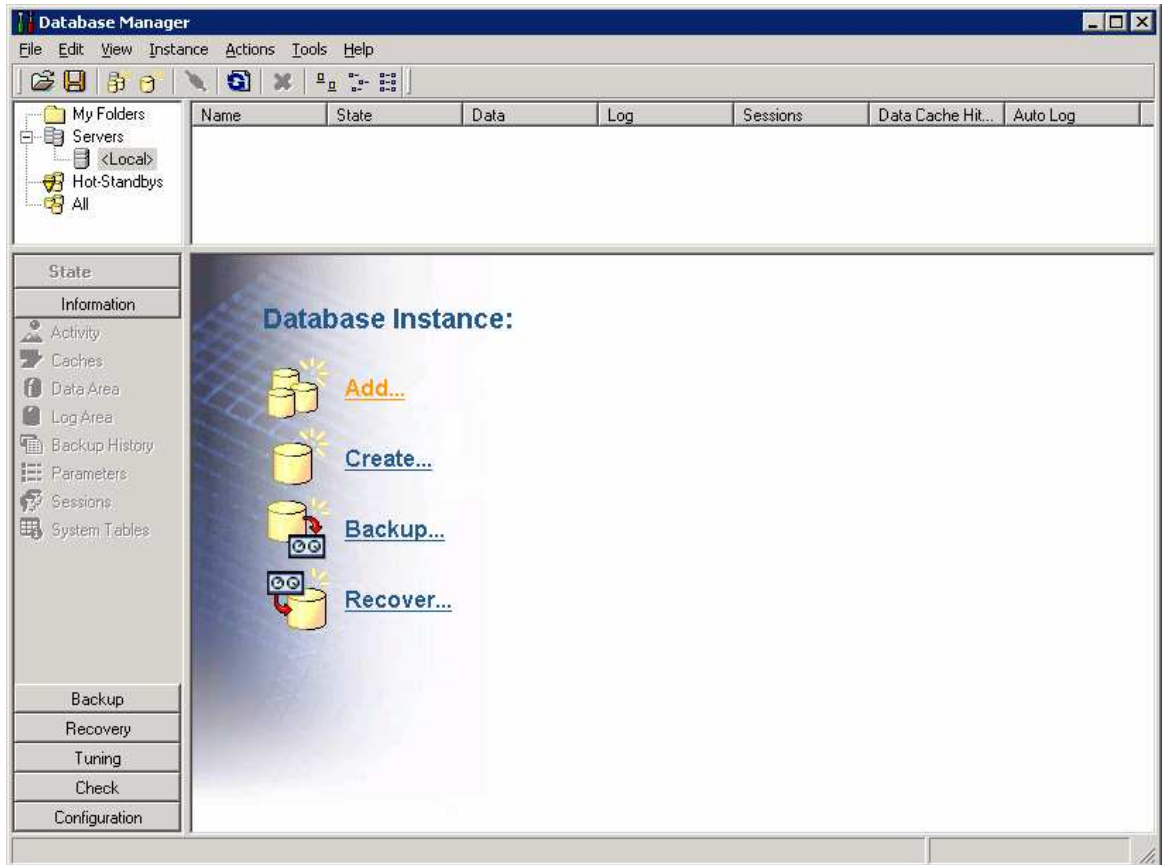


3 The Step By Step Solution

After installation start the Manager from *Start* menu.

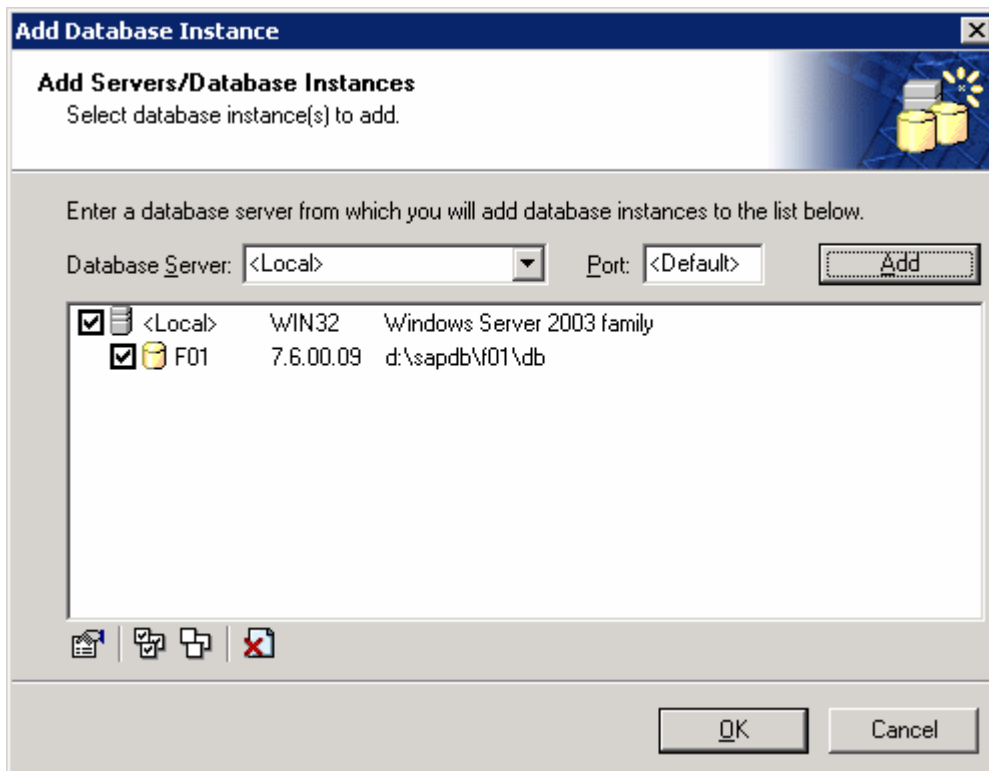



Click on *Add Database Instance*



Click *Add* in the new dialog window

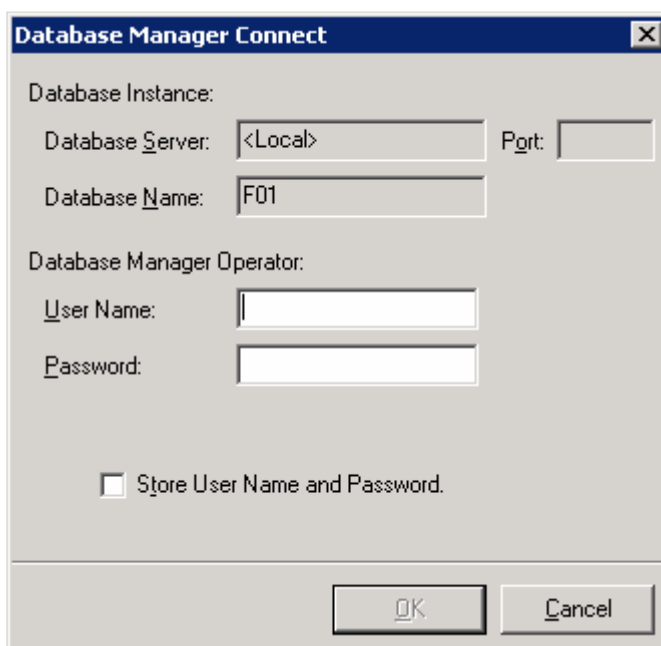
Check the *Local* -> *F01* Database instance and confirm with *OK*



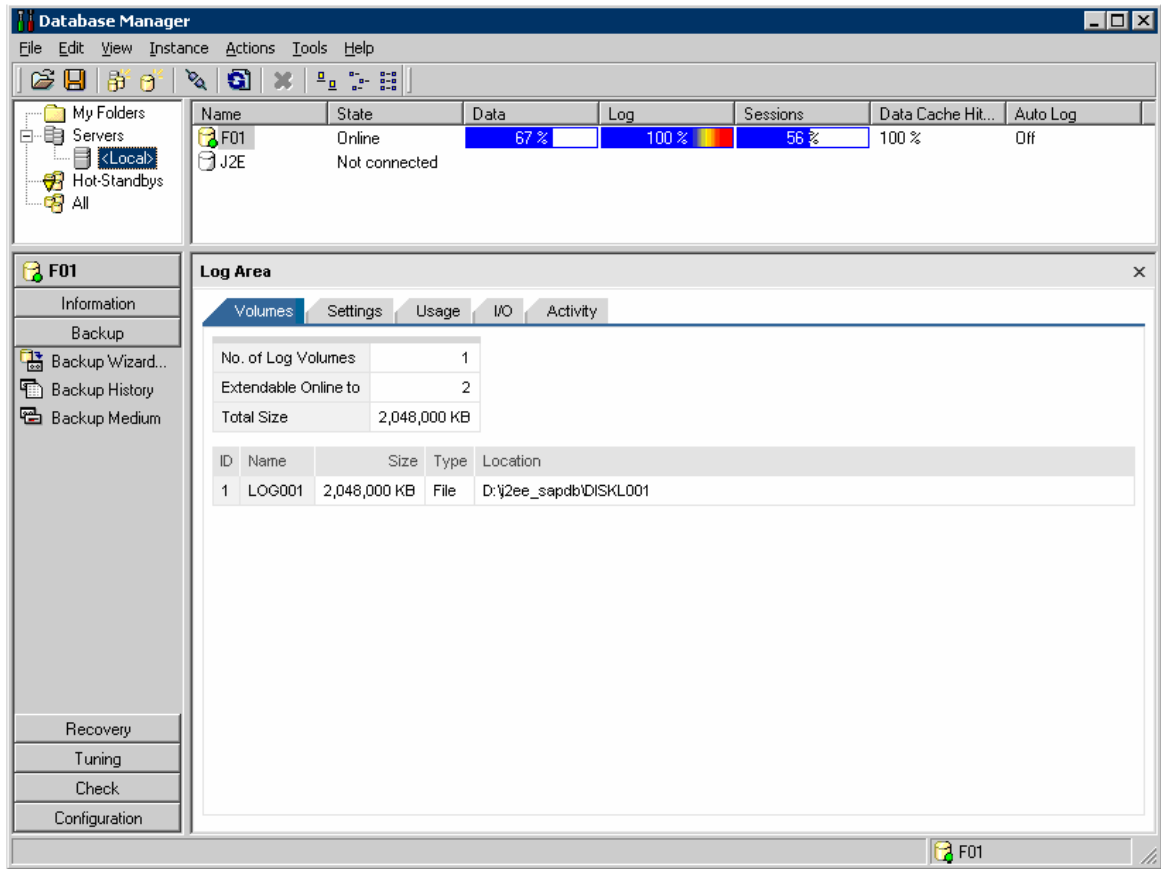
Choose the *F01* instance and click on the *Connect*  icon



Provide the user credentials of *Database System Administrator – superdba* or *Manager Operator – control* users to log-in.



If the *Log* area is marked *red* - 100% full
You have to perform backup of the *Log* file

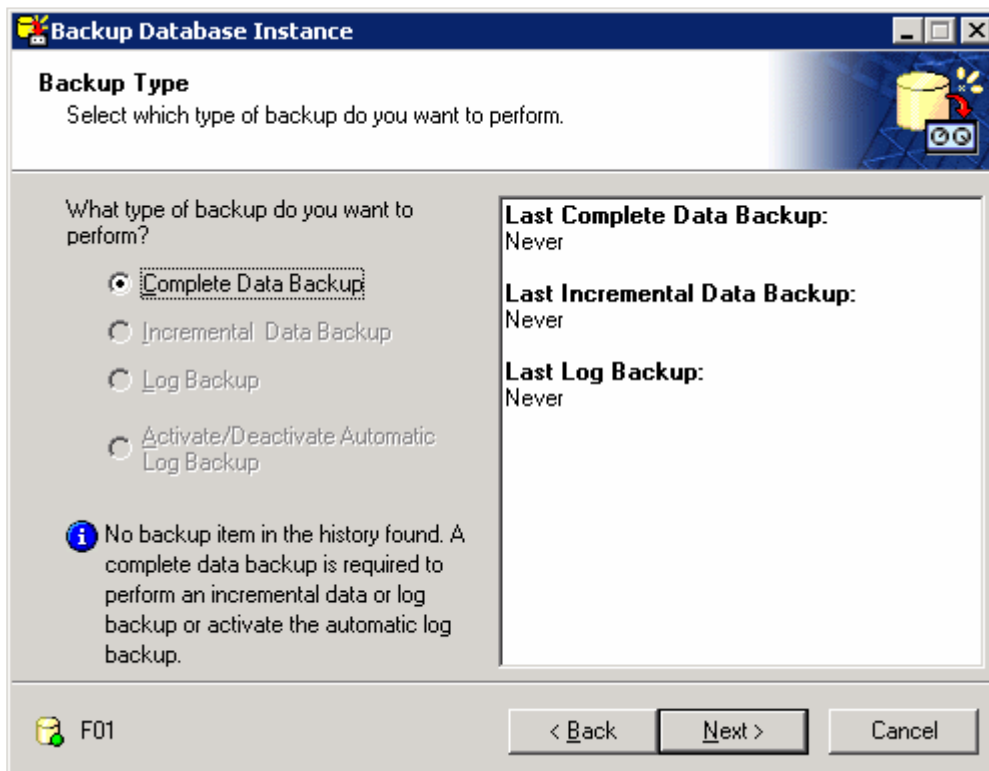


Choose the *Backup* tab from the left-hand side navigation bar, and select the *Back-Up Wizard*

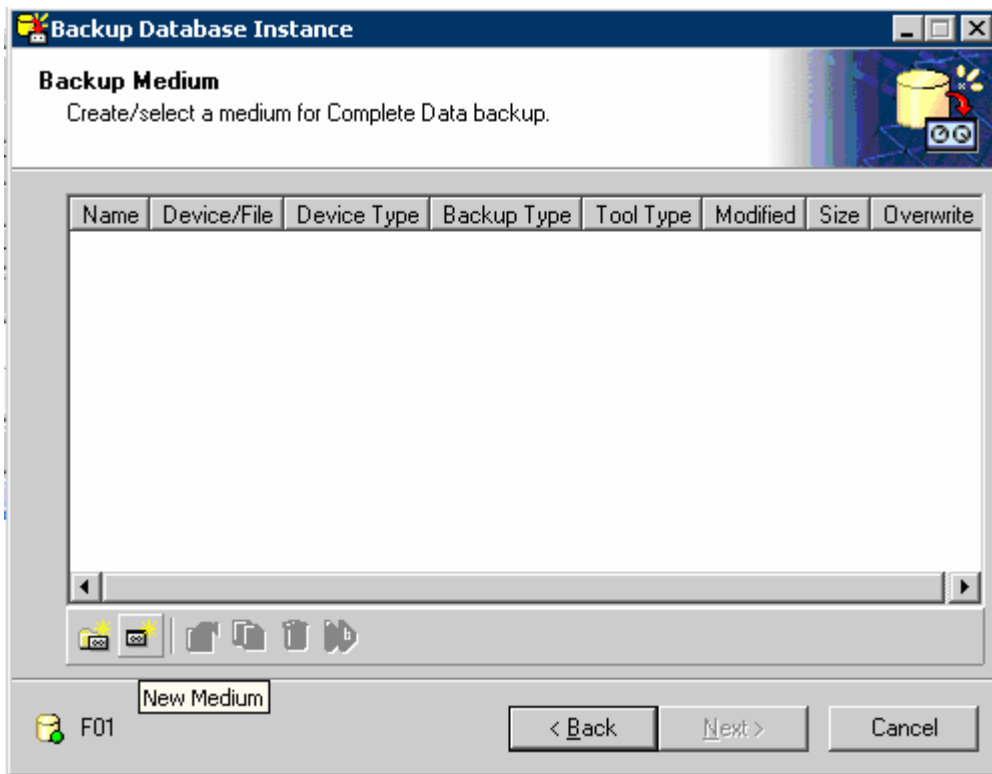


Click *Next*

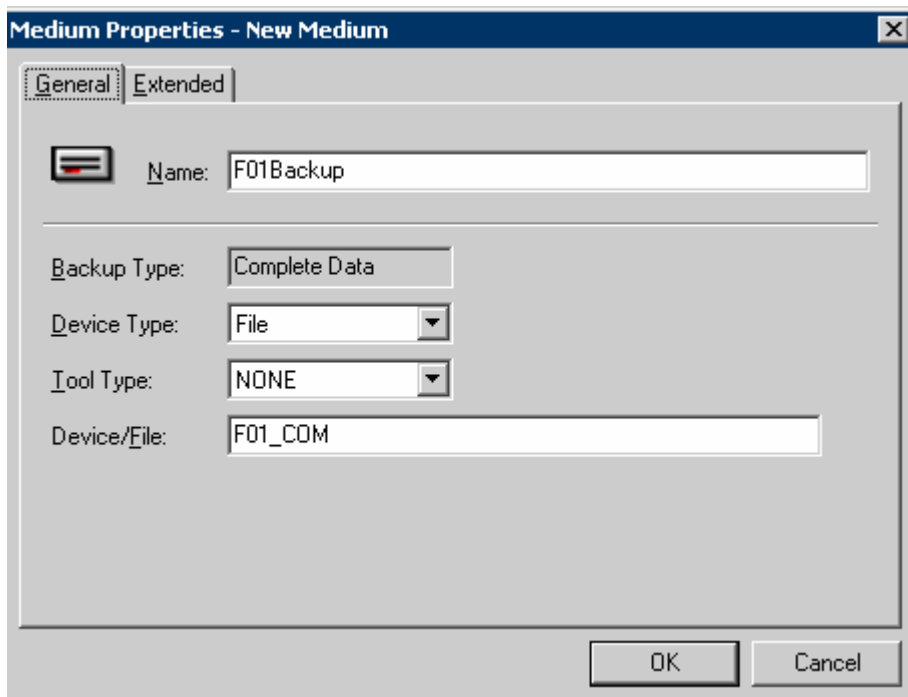
Choose *Complete data backup* on the next wizard-screen, and click *Next*



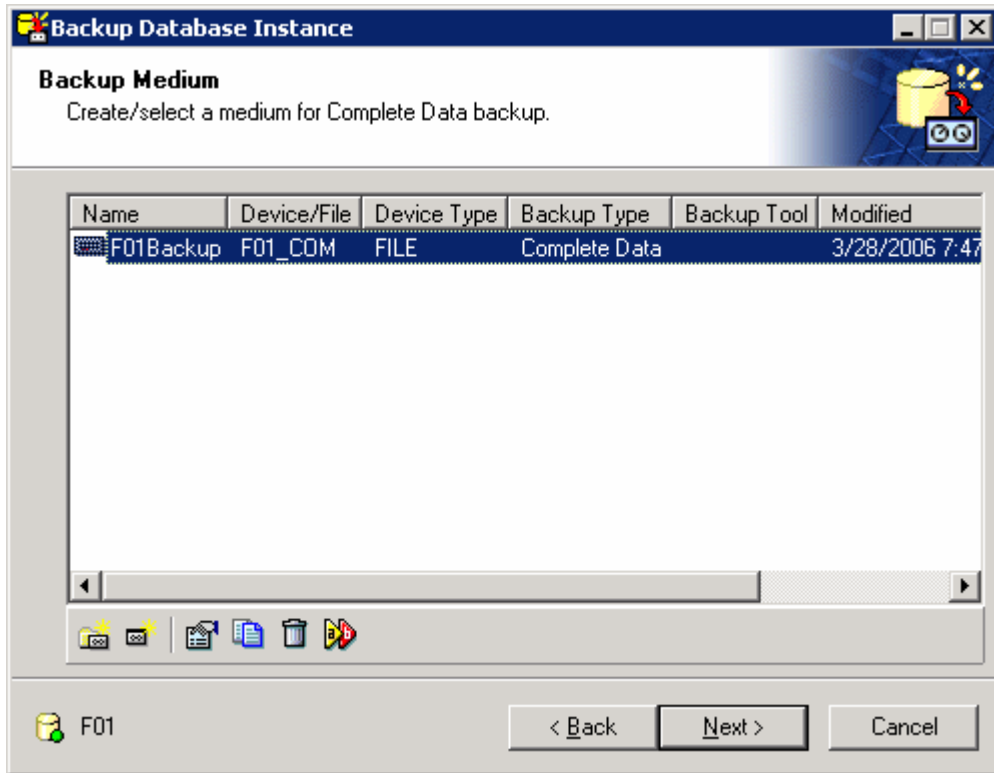
Choose the button *Create New Media* at the left-down corner in the new wizard-screen.



Specify: *Name, Device Type, Tool Type, Location* and confirm with *OK*

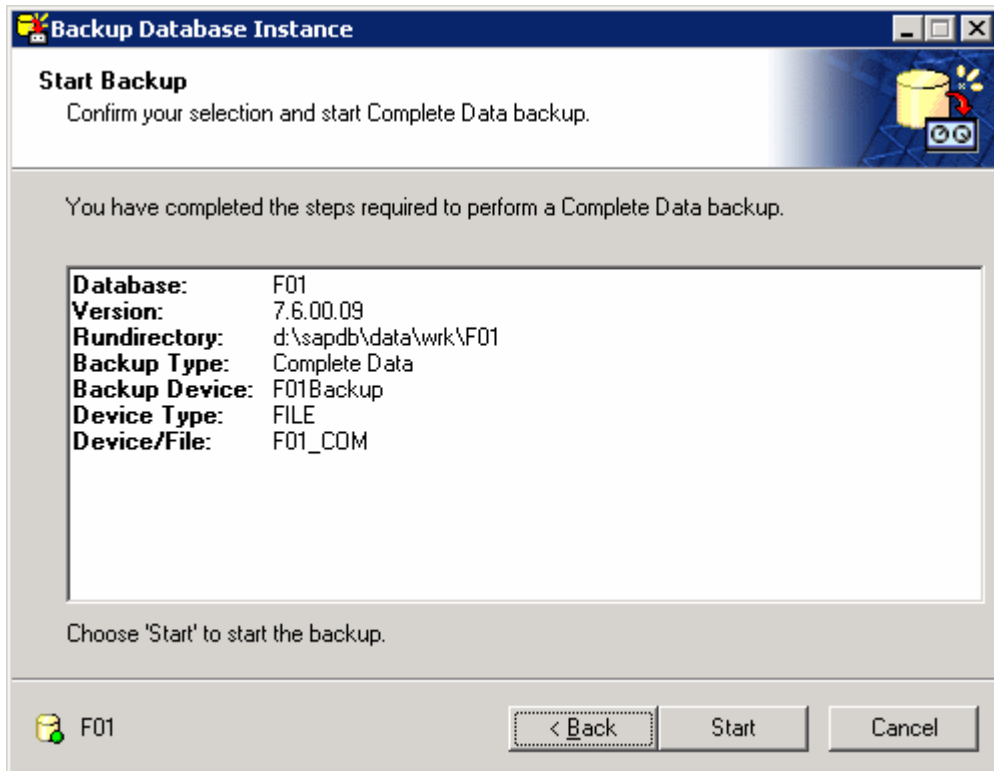


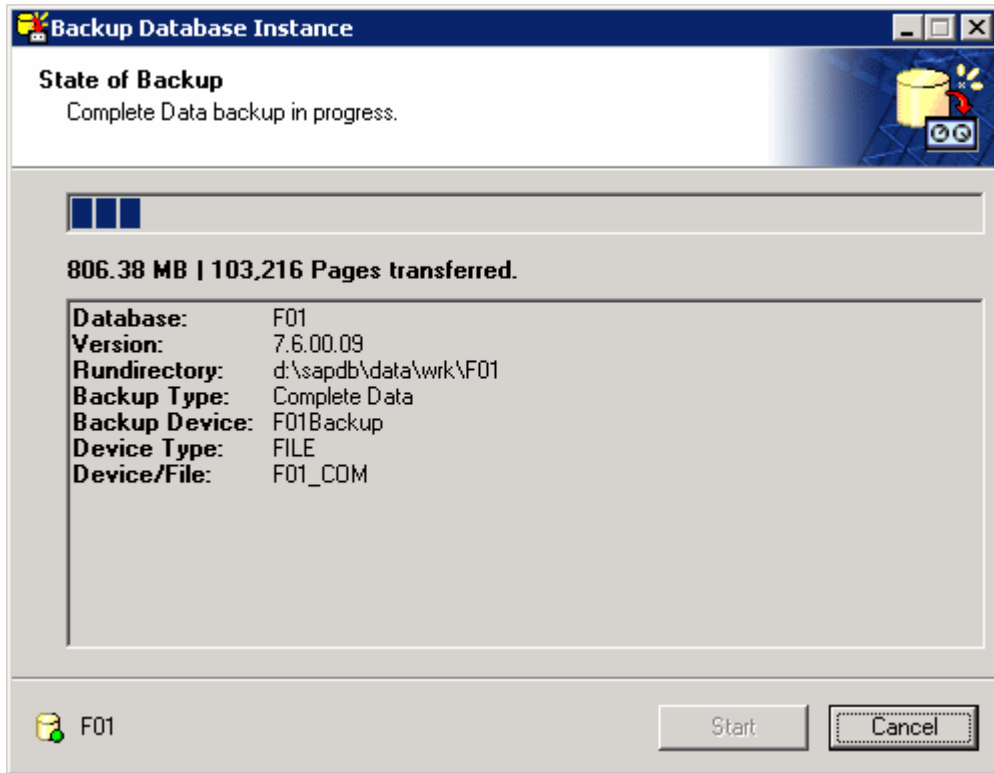
Check the properties of the *new media* and press *Next*



Note: You can *Rename* , *Check properties* , *create new Media* , and so, using the *tip* buttons on the screen.

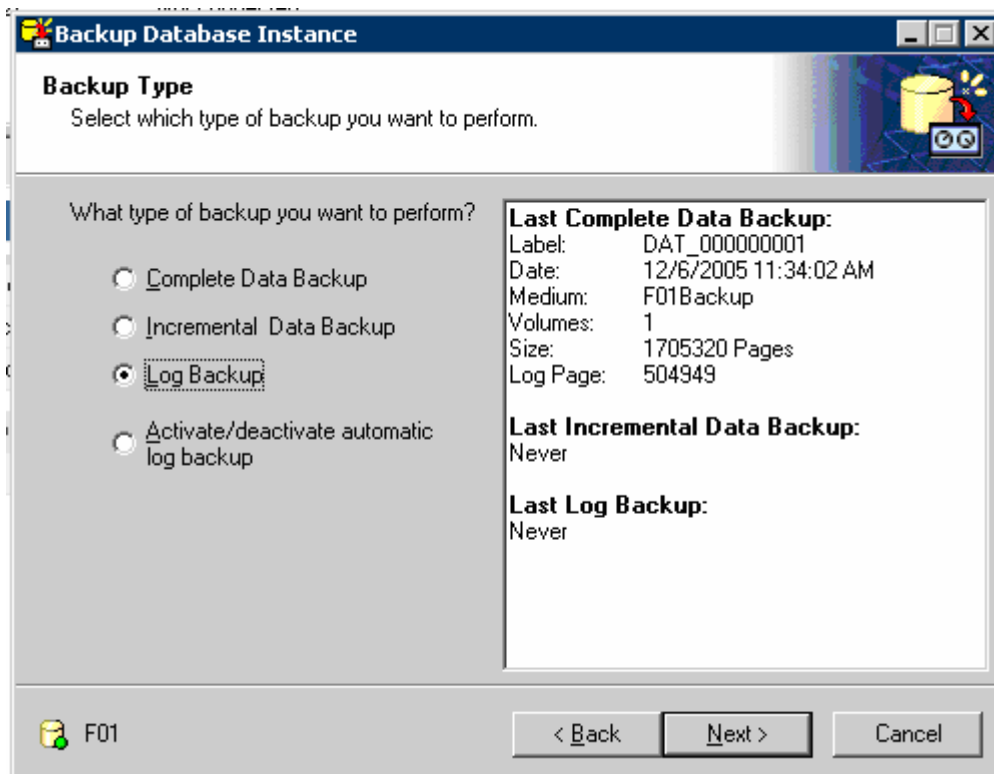
On the next screen press *Start* to begin the Backup process



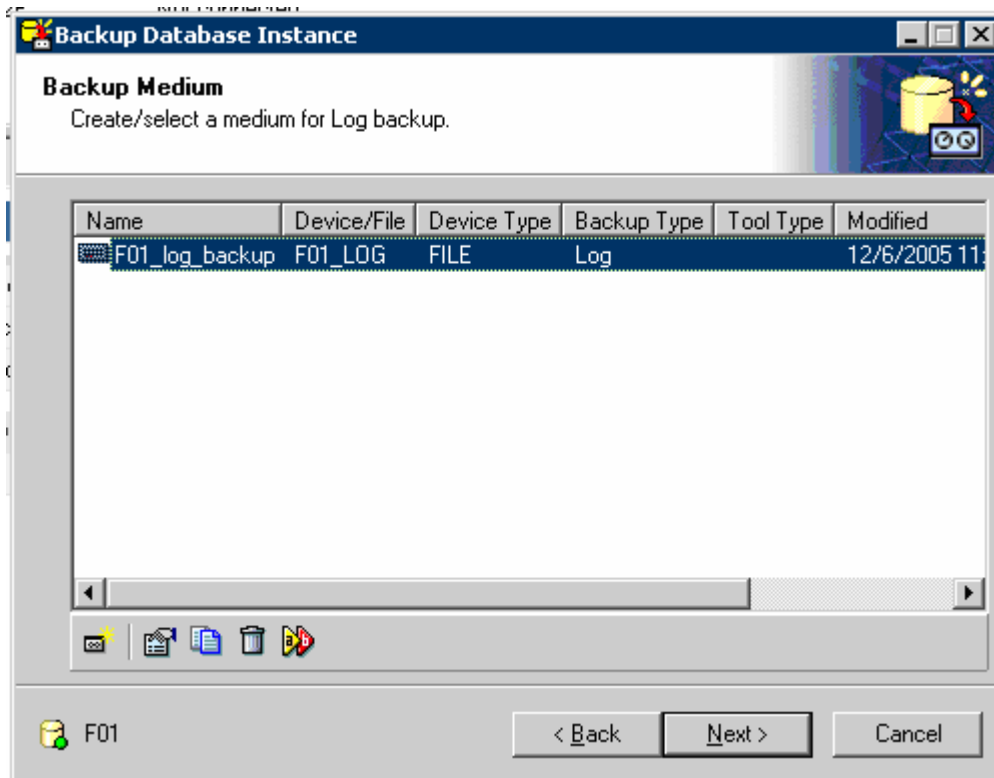


When the *Data* file backup is finished, click *Close*.

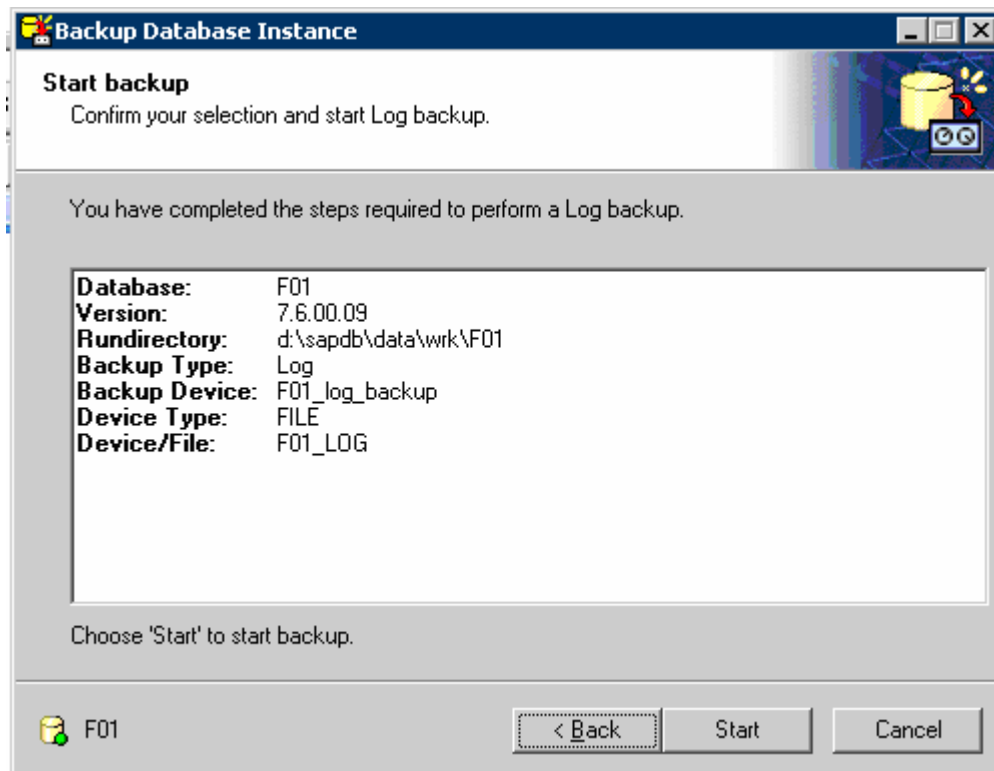
Reopen the wizard again and as *Backup type* choose *Log Backup*. Press *Next*



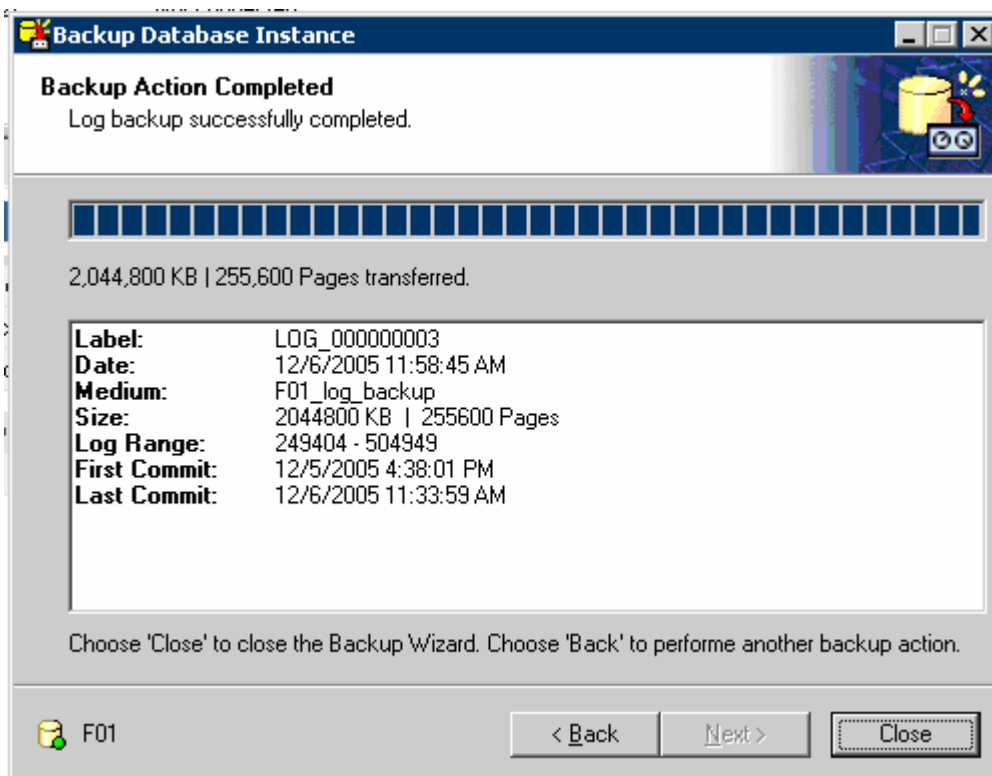
Create new *Media*, this time for the *Log* file and press *Next*



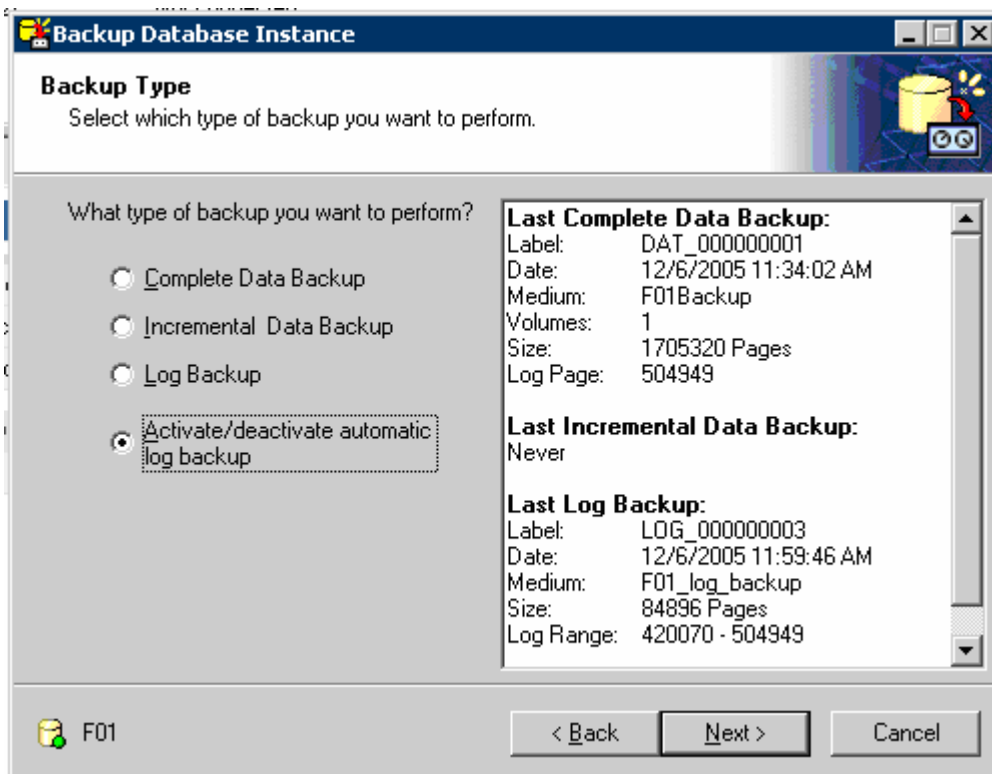
Start the *Backup* process



When the back up process finished, close the wizard.



Open the *Backup wizard* a *Third* time, and select *Activate/Deactivate automatic log backup*



Confirm all following steps.

When the process is done close the window.

Your WebAS Database instance backup is finished.

www.sap.com/netweaver