

INSTRUCTION IMAGES/ICONS IVIEW

DANIEL RUFENACH, SAP AG

Do It Yourself: Creating an image/icon iView

Use

This Instruction shows how to present images and icons to users.

To create the model, you should:

- I. Create an iView.
- II. Import image/icon.
- III. Adjust the layout of the view.
- IV. Deploy the iView to the portal.

Procedure

Begin by creating a model:

- Choose *File* → *New Model*.
- In the *Create a New Model* dialog box, enter a *Name* for the model, for example: **image**. (Attention: No spaces are allowed in the name.)
- Click **OK**. The Design workspace is displayed.

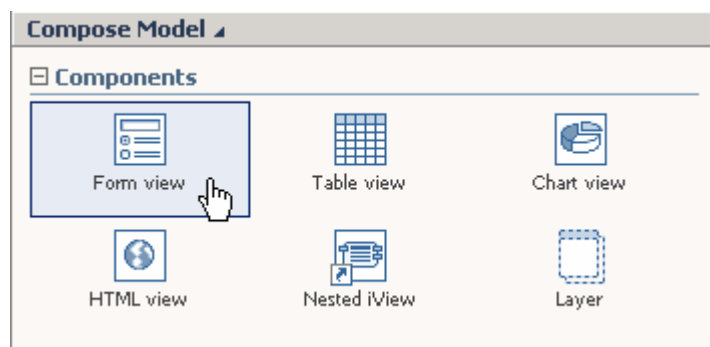
I. Creating an iView

Create an iView:

- Click on the **Task Panel Toolbar** the **Compose** button (if not already selected).
- Dragging the iView icon from the **Elements Task Panel** and call it **image**.

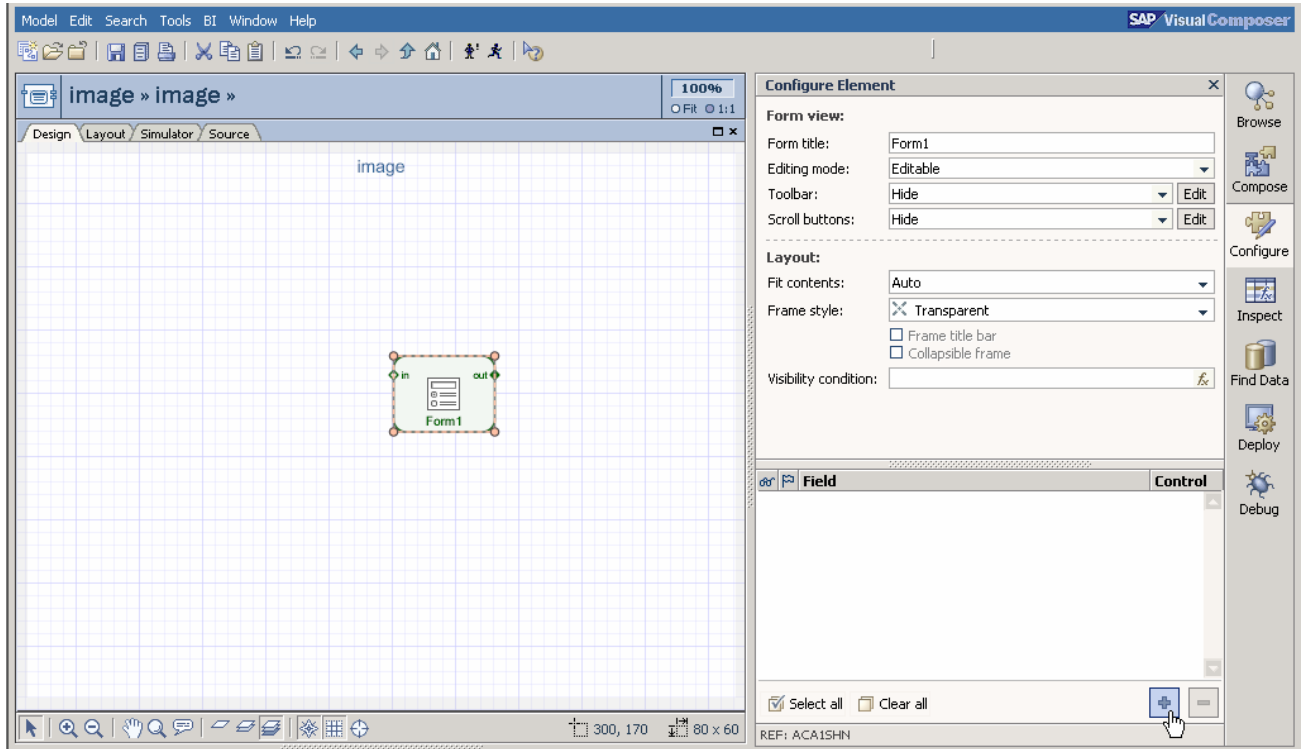
Create a Form View:

- Open (double-click) the iView.
- Click on the **Task Panel Toolbar** the **Compose** button (if not already selected).
- Dragging the **Form View** icon from the **Elements Task Panel** and call it **Form View**.

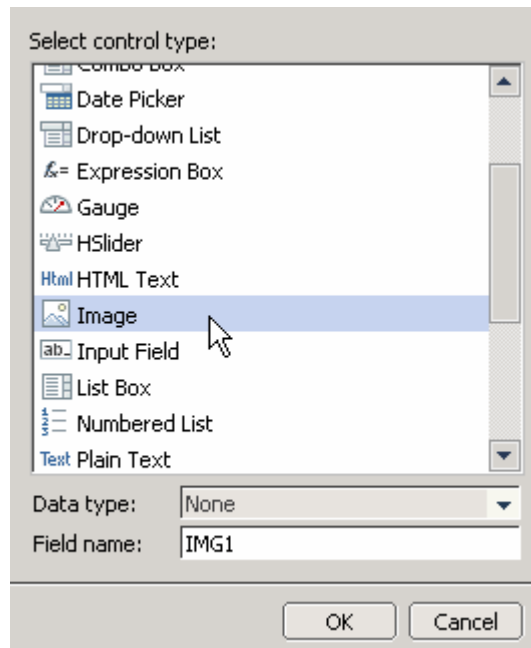


II. Import the image/icon

- Click on the **Task Panel Toolbar** the **Configure** button (if not already selected).
- Now click on the **Task Panel** the **ADD** button and an information box pop up.

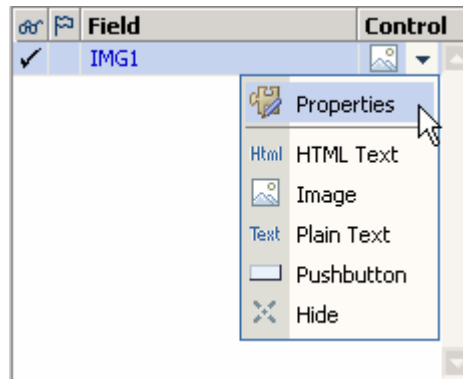


- Select **Image** from the information box and click **Ok**.

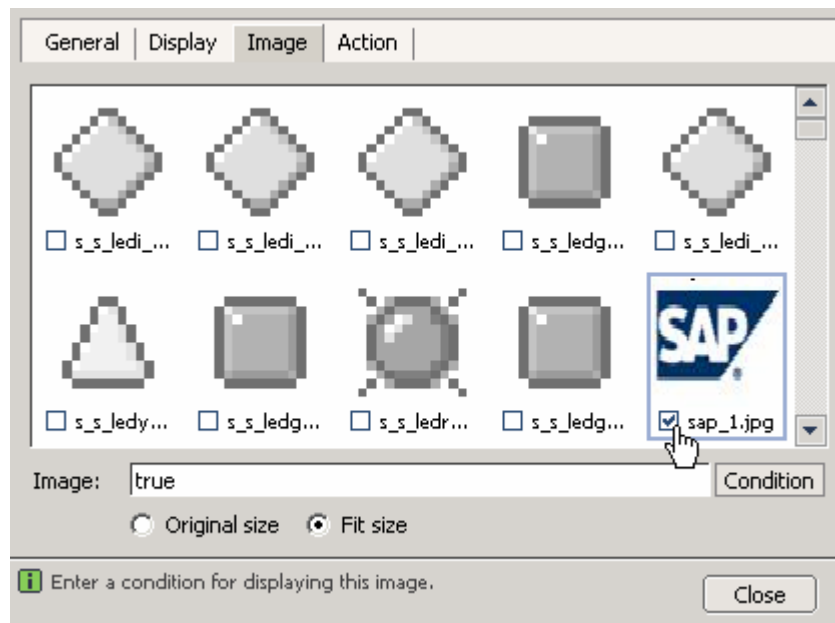


SAP VISUAL COMPOSER – CREATING NESTED IVIEW

- Click on the **Task Panel** the drop down menu on **IMG1** and select **Properties**.



- An information message is displayed. Click the **Image** tab. Select an image from the image library. For example **sap_1.jpg** and mark it. Now the image turns from black and white into color.
- Next click the radio button **Fit size**.
- Now click the button **close**.

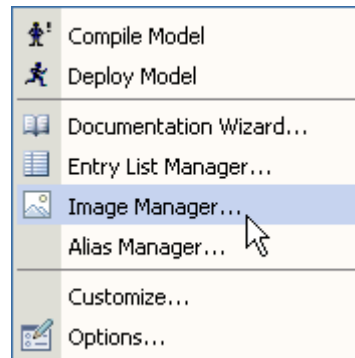


You can repeat this steps (**II. Import the image/icon**) to insert more images to the iView.

For Information: If there are no images/icons which you want to display here, then you need to first upload that image to this model. This you can do by using the **Image Manager**.

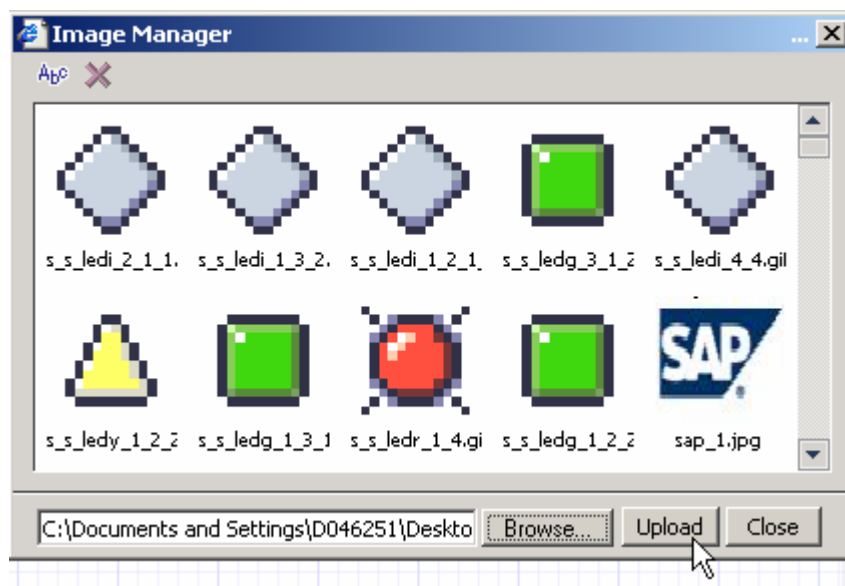
- On main menu go to button **Tools** and click on the listing **Image Manager**.

SAP VISUAL COMPOSER – CREATING NESTED IVIEW



A further information box will pop up.

- Click on the button **Browse** for importing images to the Visual Composer library.
- Select your prefer image and click **open**.
- Click the button **upload**. Now the picture is imported to the library and you can select the image like it is explained in step II.

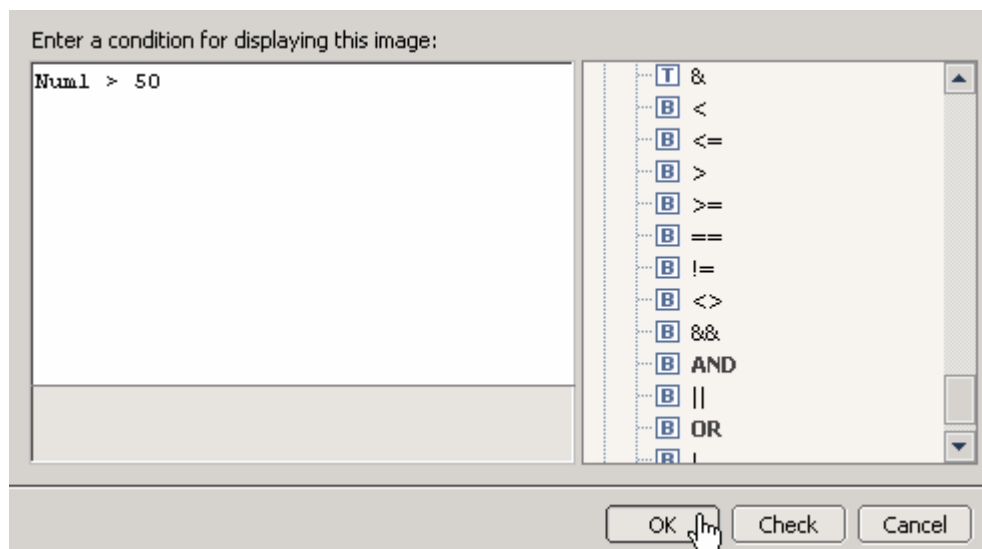
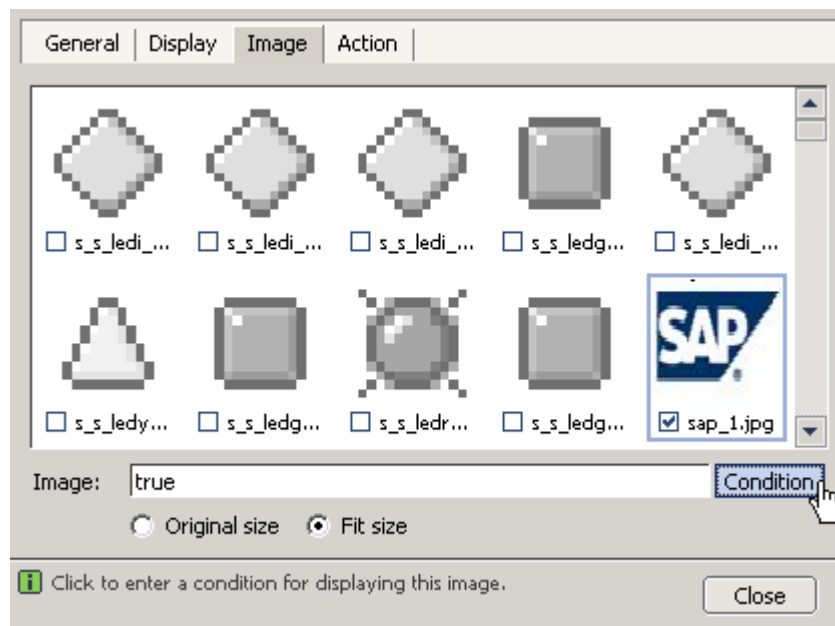


In the same way like selecting images you can also select the icons (traffic lights) and use conditions to display these icons. For example:

If value > 50 then show icon

- If you have selected an image click on the button **Conditions**.
- Enter a condition.
- Now click the button **Ok**.

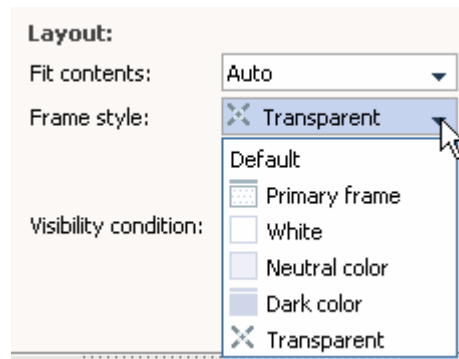
SAP VISUAL COMPOSER – CREATING NESTED IVIEW



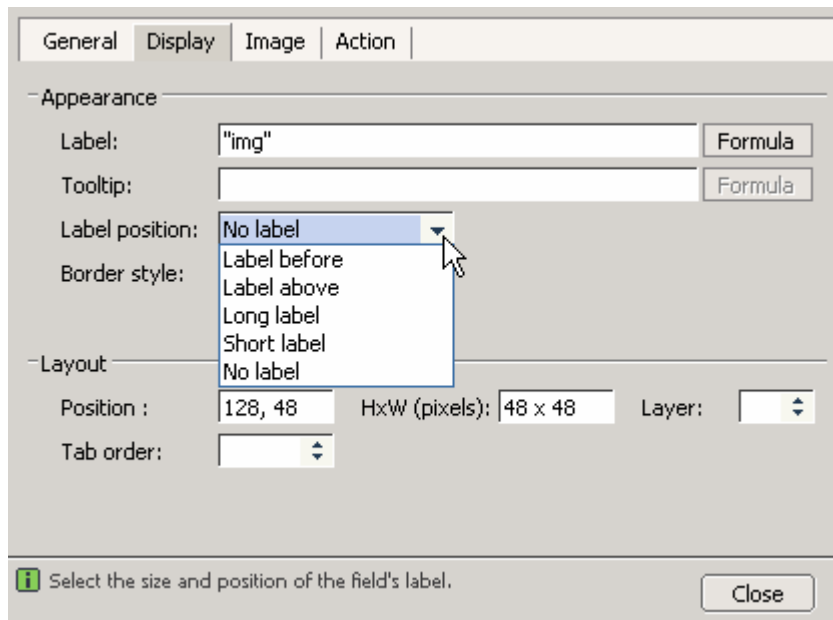
III. Adjust the layout of the views:

- Click on the Form View.
- Click on the tab **Layout** for define the layout.
- After that click on the task panel toolbar the **Configure** button (if not already selected).
- Mark image on workspace and select item **Transparent** from **Frame Style** drop down menu.

SAP VISUAL COMPOSER – CREATING NESTED IVIEW



- Right-click the image on the workspace and select the item **Properties**. An information box is displayed. Go to tab **Display**. Select **No Label** from drop down menu Label position.
- Click button **Close**.



- On the workspace you can drag the image to an arbitrary place for stretching.



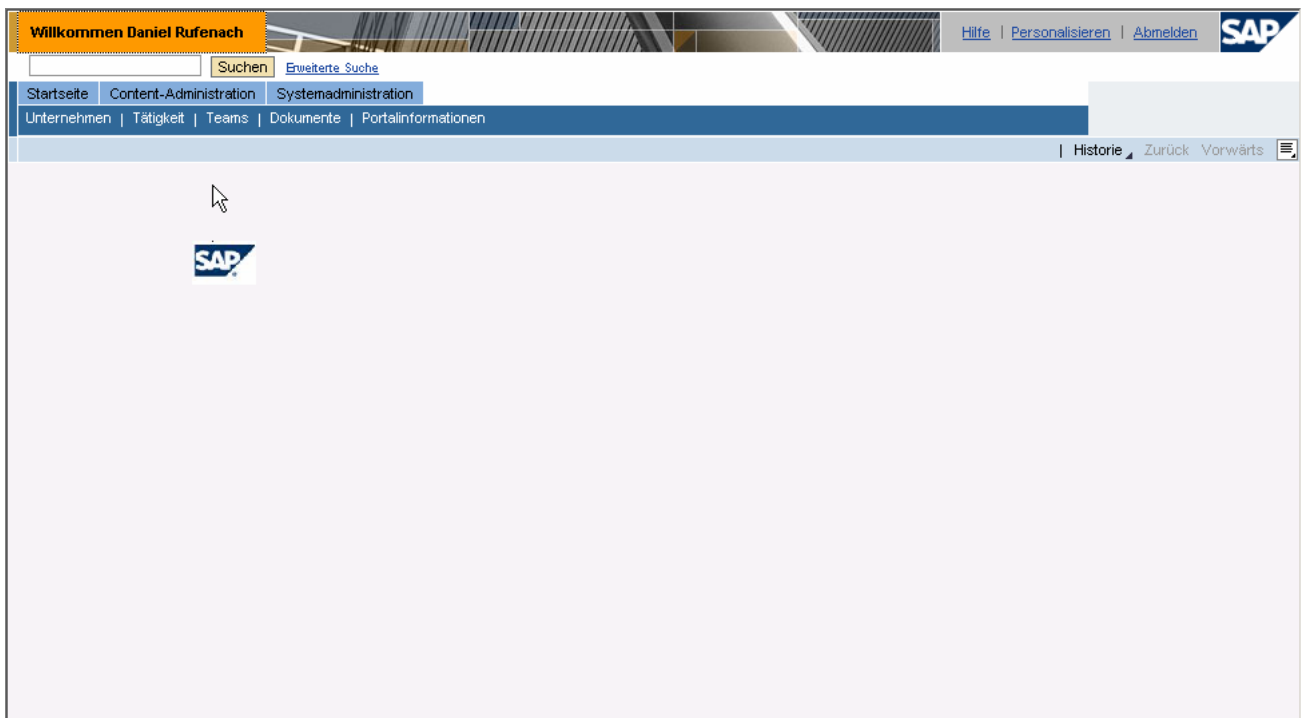
IV. Deploy the model:

- Save the model .
- Click the **Deploy** button on the **Task Panel Toolbar**
- Click the Runtime Drop Down List on the Task Panel and select **Flash**.
- Click the **Deploy** button.

Result

You can view the runtime version of your model by double-clicking **Run "Main"**, under the **Compiled Successfully!** message in the Deploy task panel.

Your model should look like to the following:



Copyright 2005 SAP AG. All Rights Reserved

- No part of this publication may be reproduced or transmitted in any form or for any purpose without the express permission of SAP AG. The information contained herein may be changed without prior notice.
- Some software products marketed by SAP AG and its distributors contain proprietary software components of other software vendors.
- Microsoft, Windows, Outlook, and PowerPoint are registered trademarks of Microsoft Corporation.
- IBM, DB2, DB2 Universal Database, OS/2, Parallel Sysplex, MVS/ESA, AIX, S/390, AS/400, OS/390, OS/400, iSeries, pSeries, xSeries, zSeries, z/OS, AFP, Intelligent Miner, WebSphere, Netfinity, Tivoli, and Informix are trademarks or registered trademarks of IBM Corporation in the United States and/or other countries.
- Oracle is a registered trademark of Oracle Corporation.
- UNIX, X/Open, OSF/1, and Motif are registered trademarks of the Open Group.
- Citrix, ICA, Program Neighborhood, MetaFrame, WinFrame, VideoFrame, and MultiWin are trademarks or registered trademarks of Citrix Systems, Inc.
- HTML, XML, XHTML and W3C are trademarks or registered trademarks of W3C®, World Wide Web Consortium, Massachusetts Institute of Technology.
- Java is a registered trademark of Sun Microsystems, Inc.
- JavaScript is a registered trademark of Sun Microsystems, Inc., used under license for technology invented and implemented by Netscape.
- MaxDB is a trademark of MySQL AB, Sweden.
- SAP, R/3, mySAP, mySAP.com, xApps, xApp, SAP NetWeaver and other SAP products and services mentioned herein as well as their respective logos are trademarks or registered trademarks of SAP AG in Germany and in several other countries all over the world. All other product and service names mentioned are the trademarks of their respective companies. Data contained in this document serves informational purposes only. National product specifications may vary.

- The information in this document is proprietary to SAP. No part of this document may be reproduced, copied, or transmitted in any form or for any purpose without the express prior written permission of SAP AG.
- This document is a preliminary version and not subject to your license agreement or any other agreement with SAP. This document contains only intended strategies, developments, and functionalities of the SAP® product and is not intended to be binding upon SAP to any particular course of business, product strategy, and/or development. Please note that this document is subject to change and may be changed by SAP at any time without notice.
- SAP assumes no responsibility for errors or omissions in this document. SAP does not warrant the accuracy or completeness of the information, text, graphics, links, or other items contained within this material. This document is provided without a warranty of any kind, either express or implied, including but not limited to the implied warranties of merchantability, fitness for a particular purpose, or non-infringement.
- SAP shall have no liability for damages of any kind including without limitation direct, special, indirect, or consequential damages that may result from the use of these materials. This limitation shall not apply in cases of intent or gross negligence.
- The statutory liability for personal injury and defective products is not affected. SAP has no control over the information that you may access through the use of hot links contained in these materials and does not endorse your use of third-party Web pages nor provide any warranty whatsoever relating to third-party Web pages..

SAP assumes no responsibility for errors or omissions in these materials