
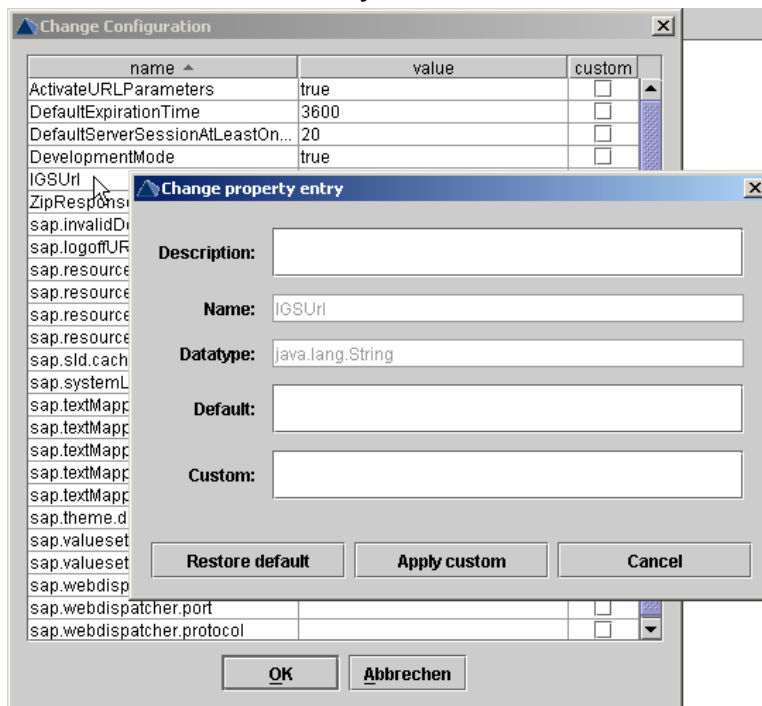



5. Click the view/edit button 
6. In the tree double-click `PropertySheet default`
7. Click `IGSUrl` in the popup window
8. In the field `Custom:` enter `<your IGSUrl>`



9. Choose *Apply custom* and *OK*.
10. Click the view/edit-button  again.
11. Now you can close the J2EE Engine Administrator.
12. Restart the J2EE engine.