

Job Scheduling Capabilities of SAP NetWeaver Part I - Installing Redwood Explorer



Applies To:

SAP NetWeaver Application Server

Summary

The integration of Redwood's Cronacle tool with SAP NetWeaver allows you to schedule all SAP NetWeaver components centrally. The objective of this tutorial is to install Redwood Explorer, the UI for Job Scheduler, in the front-end and configure it to connect to the Job Repository.

By: Venky Varadadesigan, SAP NetWeaver Product Manager

Company: SAP Labs

Date: 10 January 2006

Table of Contents

Applies To:.....	1
Summary	1
Table of Contents	1
Assumptions & Prerequisites	1
Procedure	1
Solution.....	2
Author Bio.....	7
Disclaimer & Liability Notice	7

Assumptions & Prerequisites

It is assumed that you have already downloaded the Job Scheduler from Service Marketplace and installed the server components (Process Server & Job Repository).

Procedure

1. Locate the installation file 'cr602_client.exe' and run it.
2. In the installer, choose 'Typical installation.'
3. Choose the folder in which the Redwood Explorer needs to be installed.
4. Specify the 'Connection String' for Oracle Net (Host name, Port Number and SID).
5. Once the installation is complete, locate the 'tnsnames.ora' file in the file system and check the connection configuration. After installation, if the connection string changes, this configuration file needs to be modified.

Job Scheduling Capabilities of SAP NetWeaver Part I - Installing Redwood Explorer

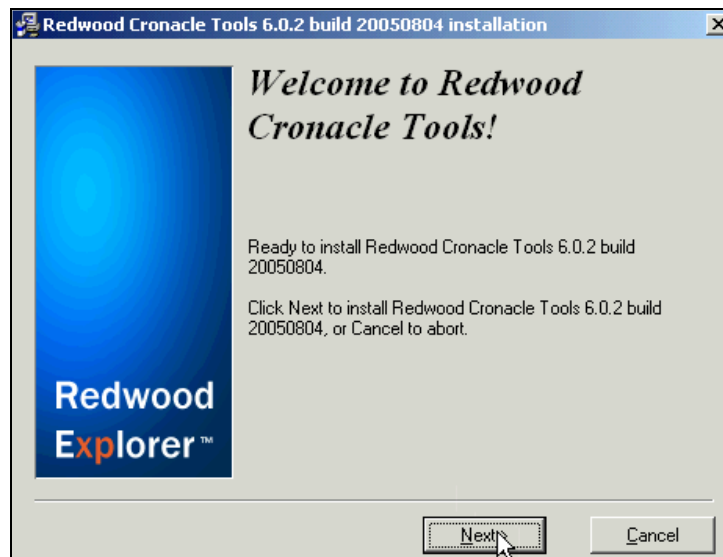
6. Launch Redwood Explorer.
7. Choose 'Oracle Net' as the connection mode.
8. Enter authentication details (userid & password) of the job repository database and select the SID. The connection details will be retrieved based on this SID from the tnsnames.ora file.
9. Just to test the connection, check all the jobs scheduled for today and save this as a short-cut.

Solution

1. Locate the installation file 'cr602_client.exe' and run it.
- The Redwood Explorer installation file comes with the download from service marketplace.
 - Double click on the 'cr602_client.exe' and run it.

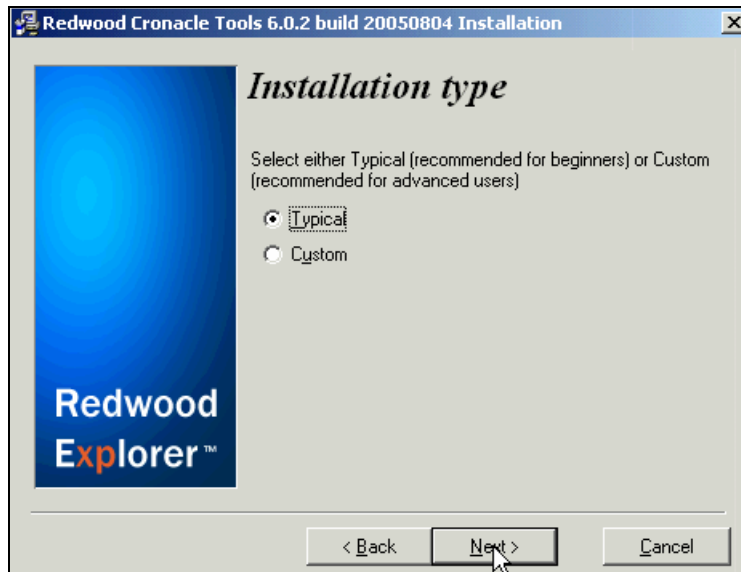
Name	Size	Type	Date Modified
cr602_client.exe	38,005 KB	Application	08.08.2005 11:35
cr602-win-x86.exe	38,451 KB	Application	08.08.2005 11:36
pm602.ear	6,443 KB	EAR File	08.08.2005 11:21
Quick_Install_Guide.pdf	480 KB	Adobe Acrobat 7.0 ...	20.05.2005 12:17

- The Redwood installer starts.

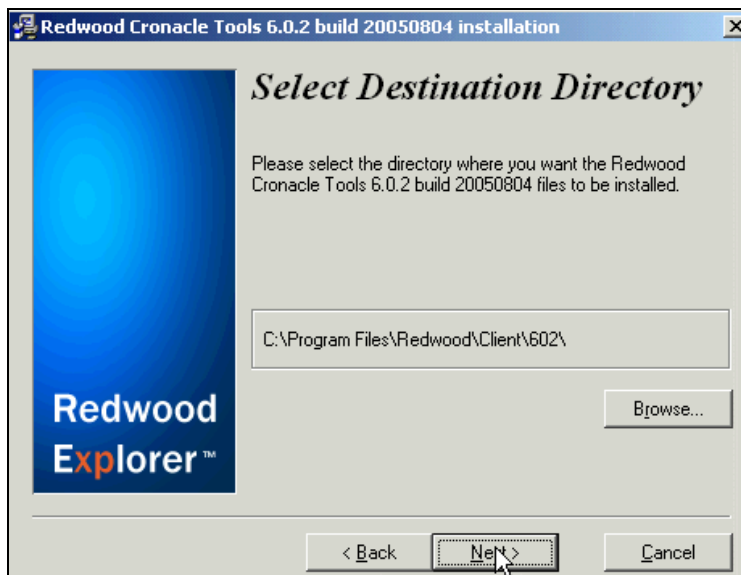


2. In the installer, choose 'Typical installation.'

Job Scheduling Capabilities of SAP NetWeaver Part I - Installing Redwood Explorer



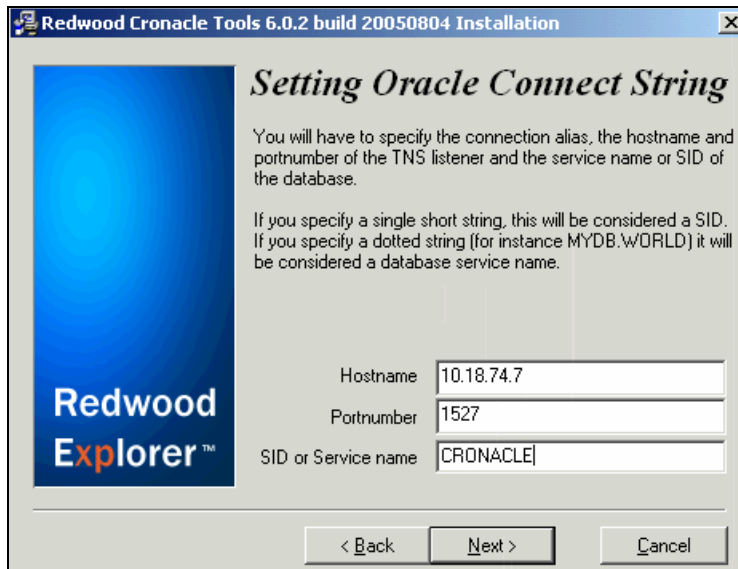
3. Choose the folder in which the Redwood Explorer needs to be installed.



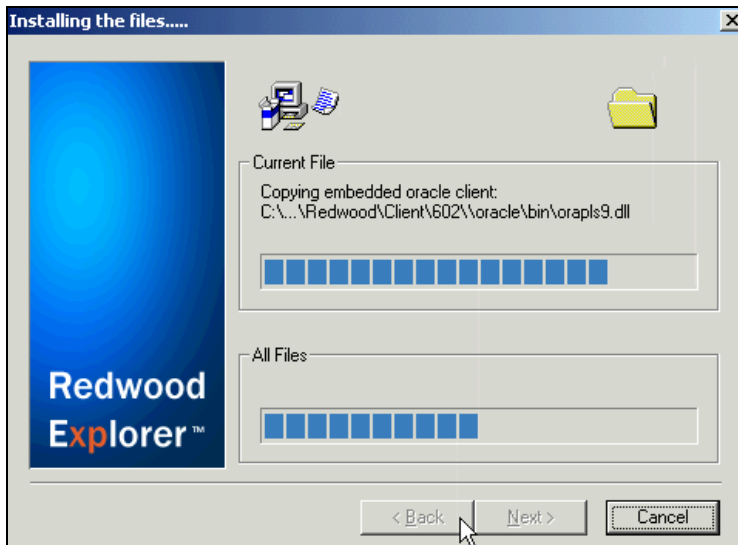
4. Specify the 'Connection String' for Oracle Net (Host name, Port Number and SID).
 - Enter the Host name or IP address of the database server (in this case 10.18.74.7), the Oracle listener Port and the SID.
 - This will be used to retrieve the Hostname and Port for subsequent connections.

Job Scheduling Capabilities of SAP NetWeaver Part I - Installing Redwood Explorer

- These details are stored in the 'tnsnames.ora' file (described in the next step).

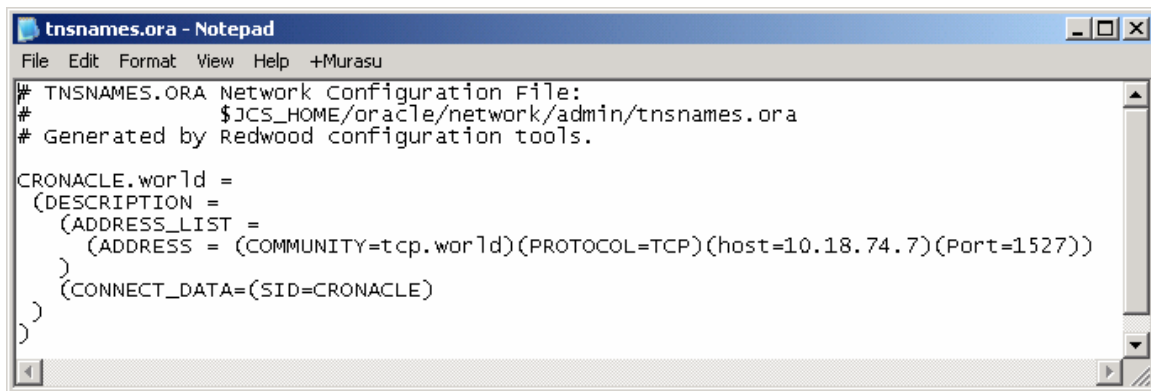
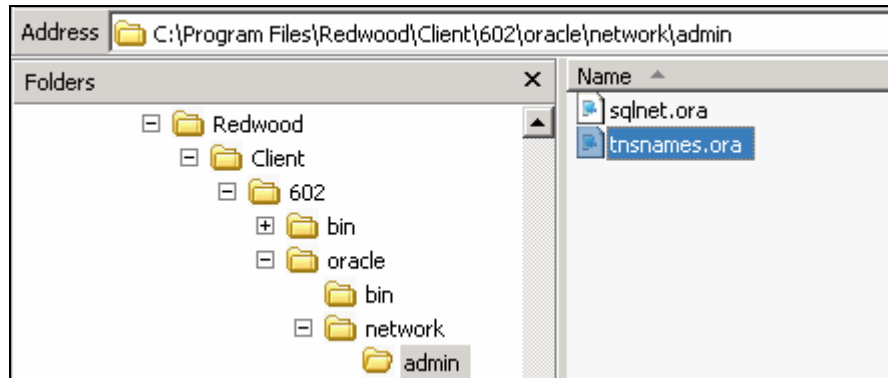


- Once the connection details are entered, installation starts.



Job Scheduling Capabilities of SAP NetWeaver Part I - Installing Redwood Explorer

- Once the installation is complete, locate the 'tnsnames.ora' file in the file system and check the connection configuration. After installation, if the connection string changes, this configuration file needs to be modified.
- The 'tnsnames.ora' file can be located under ...\\Redwood\\Client\\602\\oracle\\network\\admin folder.

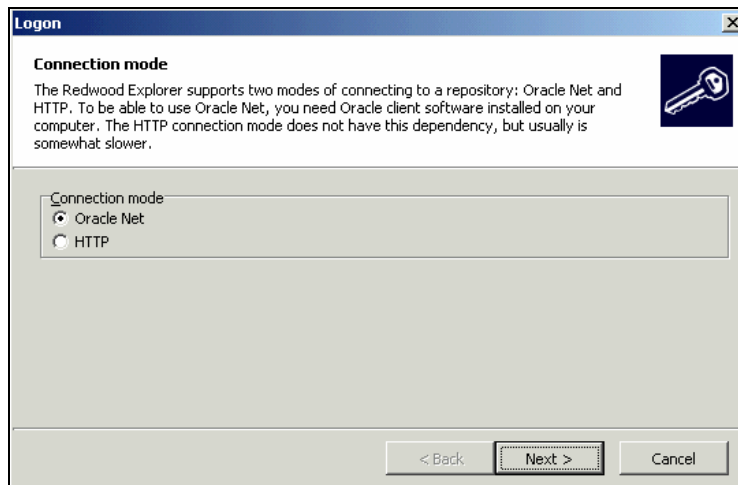


- Launch Redwood Explorer.

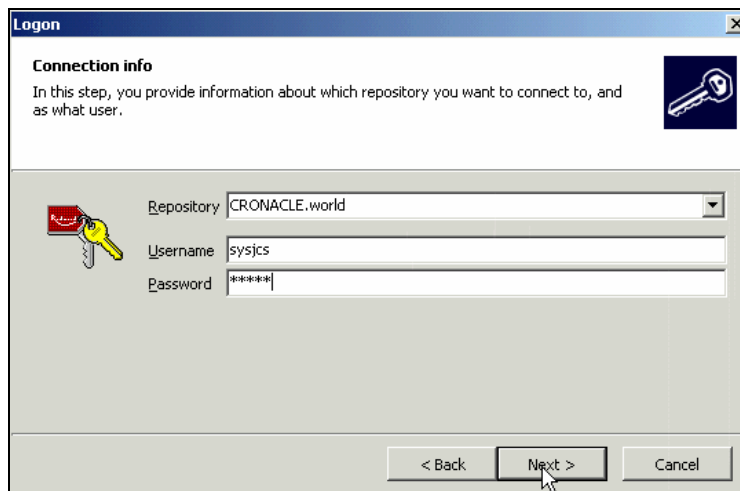


Job Scheduling Capabilities of SAP NetWeaver Part I - Installing Redwood Explorer

7. Choose 'Oracle Net' as the connection mode
 - The connection to Oracle database server from Redwood Explorer can be established in two ways: Oracle Net or HTTP. Oracle Net is what uses the connection details stored in 'tnsnames.ora' file.

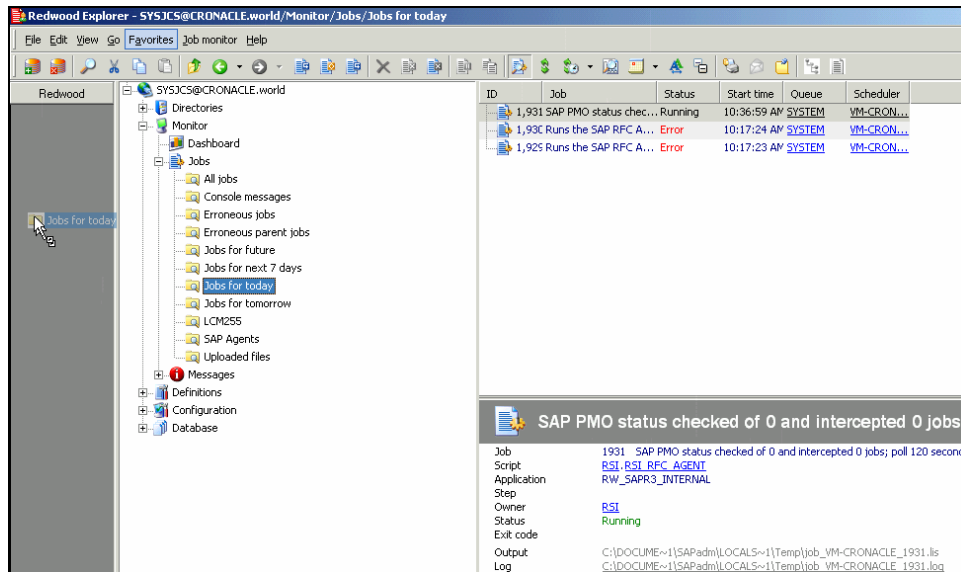


8. Enter authentication details (userid & password) of the job repository database and select the SID. The connection details will be retrieved from the tnsnames.ora file.



9. Just to test the connection, check all the jobs scheduled for today and save this as a short-cut.
 - Expand the Explorer tree and choose 'Monitor -> Jobs -> Jobs for today'. That will display all the jobs scheduled and completed for today in the Job list area.
 - Drag 'Jobs for today' and drop it on the Redwood favorites area

Job Scheduling Capabilities of SAP NetWeaver Part I - Installing Redwood Explorer



You have now successfully installed the Redwood Explorer.

Author Bio



Venky Varadadesigan is a Product Manager for SAP NetWeaver with SAP Labs - in charge of Application Server topics like ABAP (including Web Dynpro for ABAP, Enhancement Framework, Switch Framework) and Systems (Monitoring & Scheduling). He comes from a consulting background with rich experience in Exchange Infrastructure and Portal.

Disclaimer & Liability Notice

This document may discuss sample coding or other information that does not include SAP official interfaces and therefore is not supported by SAP. Changes made based on this information are not supported and can be overwritten during an upgrade.

SAP will not be held liable for any damages caused by using or misusing the information, code or methods suggested in this document, and anyone using these methods does so at his/her own risk.

SAP offers no guarantees and assumes no responsibility or liability of any type with respect to the content of this technical article or code sample, including any liability resulting from incompatibility between the content within this document and the materials and services offered by SAP. You agree that you will not hold, or seek to hold, SAP responsible or liable with respect to the content of this document.