

Crystal Reports

How to use the Database Expert in Crystal Reports 9

Overview

This document explains how to use the features contained in the Database Expert in Crystal Reports 9.

Contents

INTRODUCTION	2
CONFIGURING THE DATABASE EXPERT OPTIONS	2
VIEWING CURRENT CONNECTIONS	3
CONNECTING TO THE REPOSITORY	4
ADDING FAVORITES	5
Steps to add a data source connection to the Favorites folder	5
Steps to delete a data source from the Favorites folder:	6
VIEWING THE HISTORY FOLDER.....	6
WORKING WITH CREATE NEW CONNECTION	7
Methods to connect to an ODBC data source	7
Steps to create a new ODBC data source connection.....	7
Steps to connect to a database using File Data Source.....	8
Steps to connect to an existing data source.....	8
WORKING WITH DATABASE FILES	9
Steps to connect to a PC-type database.....	9
WORKING WITH MORE DATA SOURCES	10
Steps to connect to a data source in the More Data Sources folder.....	11
WORKING WITH DICTIONARY/QUERY	11
Steps to connect to a Dictionary file	12
Steps to connect to a Query file	12
SELECTING TABLES, VIEWS, OR STORED PROCEDURES	12
FINDING MORE INFORMATION	13
CONTACTING CRYSTAL DECISIONS FOR TECHNICAL SUPPORT	13

Introduction

The Database Expert is introduced in version 9 of Crystal Reports. From the Database Expert, you can select the data source for any type of connection. For example, PC-type databases, ODBC , native SQL connections, and OLE DB.

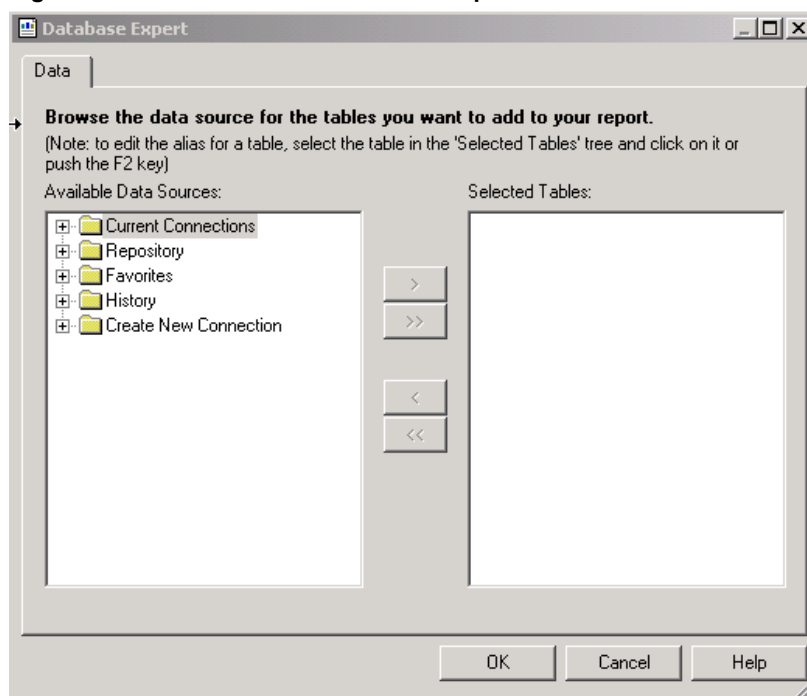
This document identifies the folder structures in the Database Expert and provides an explanation of the features contained in each one.

The Database Expert contains five folders:

- Current Connections
- Repository
- Favorites
- History
- Create New Connection

These folders contain subfolders that list all available data sources and data source tables. Refer to Figure 1.

Figure 1: Five folders in the Database Expert



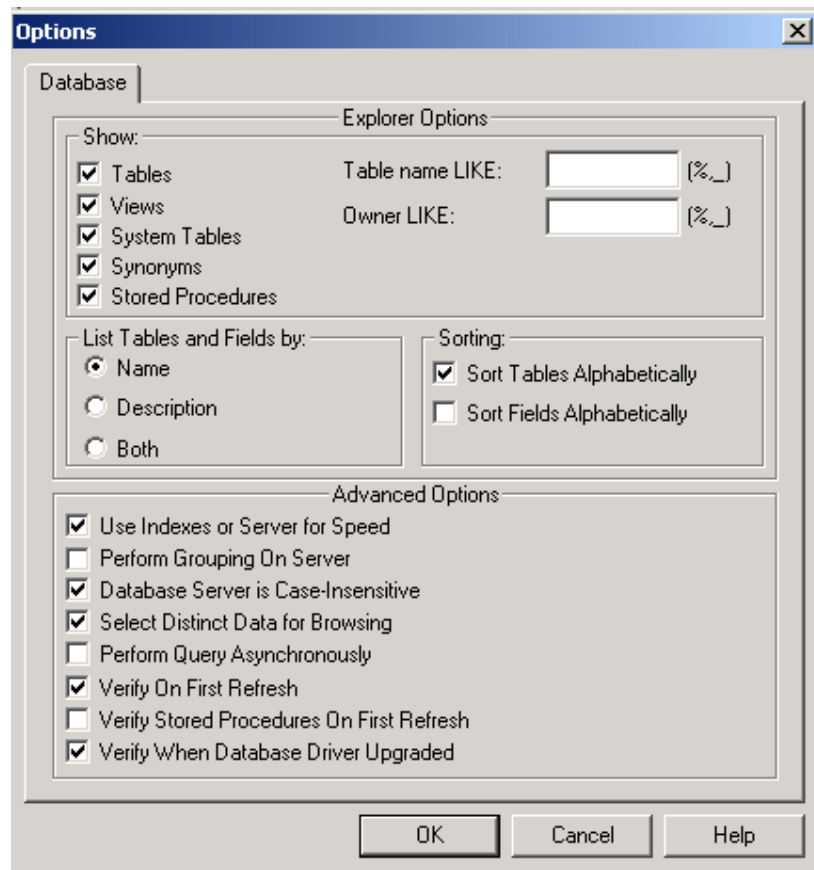
Configuring the Database Expert Options

Start by configuring the Database Expert Options. The options in the Database Expert facilitates what data source object types will appear in any of the expanded folder and how they will appear.

Right-click anywhere in the 'Available Data Sources' area of the Database Expert dialog box and select **Options**.

For more information on the Database Expert Options, refer to the Crystal Reports Online Help by pressing the **F1** key.

Figure 1: Database Expert Options



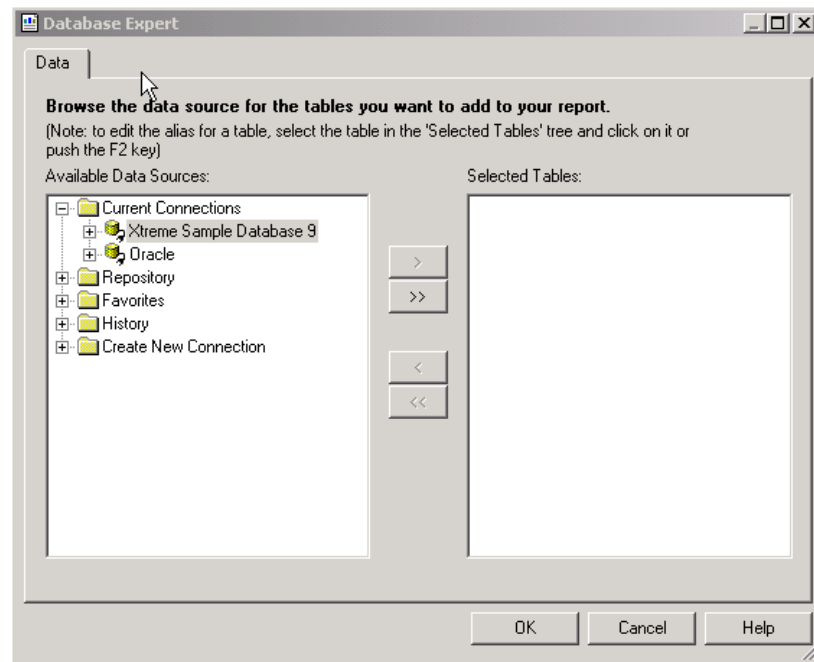
Viewing Current Connections

The Current Connections folder contains a list of all open data source connections that have been established in the Crystal Report Designer. This list includes data source connections made with ODBC, native SQL, and OLE DB.

NOTE

PC-type databases, such as Microsoft Access, are not included in the 'Current Connections' folder because there are no active connections between Crystal Reports and these types of databases.

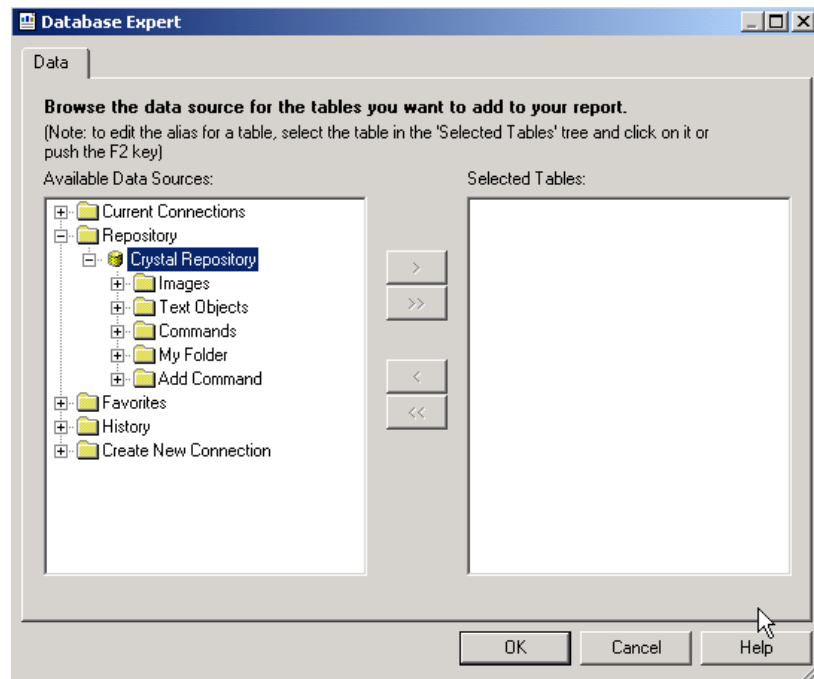
Figure 2: Current connections listed in the Database Expert



Connecting to the Repository

The Repository folder allows you to connect to the Crystal Repository.

Figure 3: Crystal Repository in the Database Expert



For more detailed information on the Crystal Repository and how it works, search for the file name, [Repository.pdf](#), on our support site at:

<http://support.crystaldecisions.com/docs>

Adding Favorites

The Favorites folder in the Data Explorer contains a list of data sources you connect to on a regular basis.

Add database connections made by way of ODBC and other connection types to the Favorites folder.

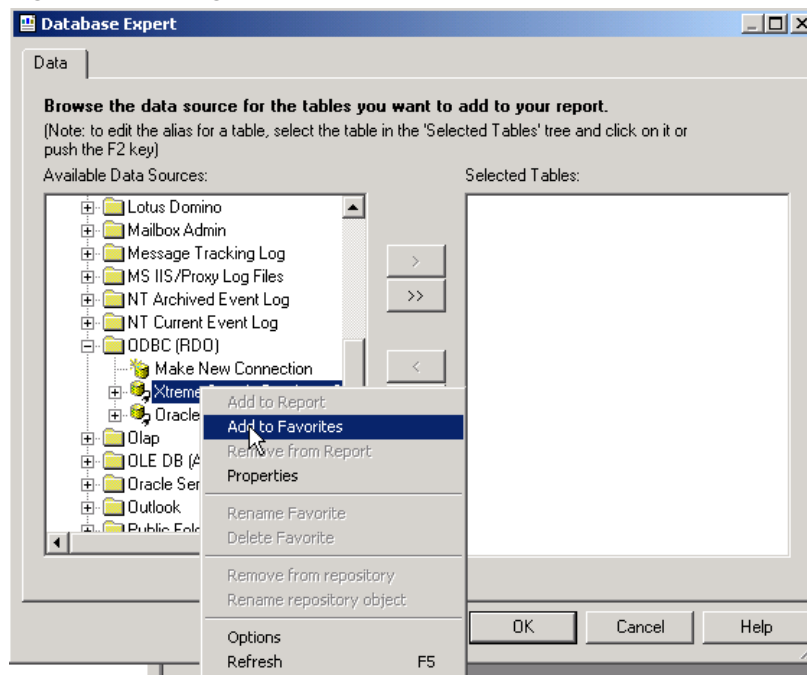
When adding a data source connection to the Favorite folder, note the following:

- An ODBC data source does not need to have an active connection, in order to add it to the Favorites folder from the ODBC folder.
- A direct data source must have an active connection in order to add it to the Favorites folder from the More Data Sources folder.
- Database File data sources cannot be added to the Favorites folder since the Report Designer does not maintain an active connection.

Steps to add a data source connection to the Favorites folder

1. In the Data Explorer, right-click on the data source that you want to add. Refer to Figure 4.

Figure 4: Selecting Add to Favorites in the Data Explorer



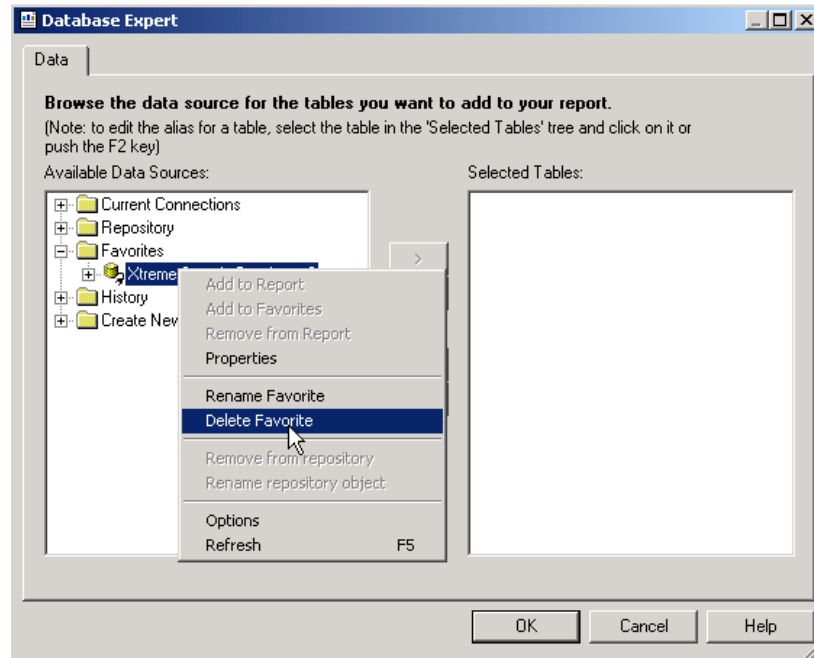
2. Click **Add to Favorites** to add a data source to the Favorites folder.

Upon completing the steps to add a data source connection to the Favorites folder, you will be able to access this connection from the Favorites folder.

Steps to delete a data source from the Favorites folder:

1. In the Favorites folder, right-click on the data source that you want to delete.
2. Click **Delete Favorite** to remove the data source from the Favorites folder.

Figure 5: Selecting Delete Favorite in the Data Explorer

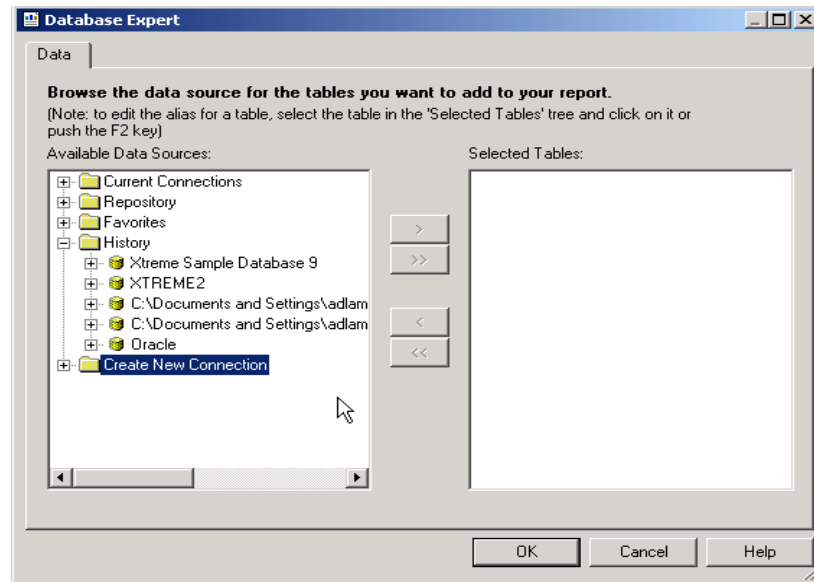


Upon completing the steps to delete a data source connection from the Favorites folder, you will not be able to access this connection from the Favorites folder.

Viewing the History folder

The History folder in the Database Expert contains a list of the most recently opened data source connections. The History folder displays up to the last five data sources used.

Figure 6: Data sources listed in the History folder



Working with Create New Connection

The Create New Connection folder in the Database Expert is where you make new connections to a data source. You can create connections by way of ODBC, native (direct) and OLE DB connections.

The ODBC folder in the Database Expert is located in the Create New Connection folder, and contains all of the ODBC Machine (also known as System) Data Sources. All System and User ODBC data source names that appear in your 32-bit ODBC Administrator will be listed in the ODBC folder.

Once you have successfully configured a connection to the data source, tables, views, or stored procedures will appear below that data source's folder.

Methods to connect to an ODBC data source

There are three methods available for connecting to an ODBC data source:

- Make a new ODBC data source connection
- Connect to an existing ODBC data source using the File Data Source option.
- Select an existing ODBC data source

NOTE

When you select a data source from the ODBC folder, you may be prompted to log on if the connection has not been configured with logon information.

Steps to create a new ODBC data source connection

Within Crystal Reports 9, you can make multiple connections to different data sources. If you have already established a connection to an ODBC data source, you have the ability to create a new data source connection.

1. In the Data Explorer, double-click the Make New Connection folder.
 - The ODBC (RDO) Data Source Selection dialog window opens.
2. Select an existing ODBC data source, or you can select a File DSN, and click **Next**.
3. Enter the requested logon information.

Once you have successfully configured a connection to the data source, tables, views, or stored procedures will appear below that data source's folder.

Steps to connect to a database using File Data Source

If you are establishing a new connection to an ODBC data source for the first time, click on the ODBC folder within the Create New Connection folder. Use the Make New Connection folder if you have already established a connection to a previous ODBC data source.

Within the ODBC (RDO) dialog box, there is a **Find File DSN** option. When you select this option, an ODBC File DSN open dialog box appears.

1. Search for the <filename>.DSN.
2. Select the <filename>.DSN.
3. Select the data source, click **Open**, then **Next**.

Once you have successfully configured a connection to the data source, tables, views, or stored procedures will appear below that data source's folder.

NOTE	If you select a data source from the ODBC folder, you may be prompted for logon information.
-------------	--

Steps to connect to an existing data source

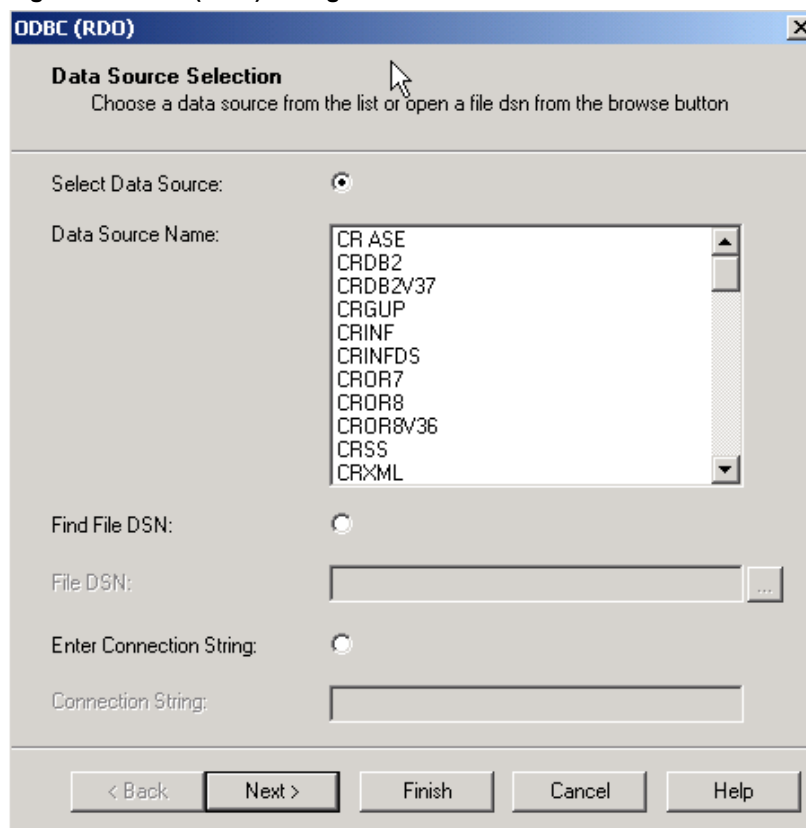
Within the ODBC (RDO) Data Source selection:

1. Select the data source, click **Next**.
2. If prompted, enter the requested logon information and click **Finish**.
3. Select the tables to add to the report.
4. Click **OK**, when you are finished selecting tables to the report.

Once you have successfully configured a connection to the data source, tables, views, or stored procedures will appear below that data source's folder.

NOTE	If you select a data source from the ODBC folder, you may be prompted for logon information.
-------------	--

Figure 7: ODBC (RDO) dialog box



Working with Database Files

The Database Files folder is located within the Create New Connection folder. It allows you to select PC-type database files with which to connect. When this folder is expanded, and a connection has already been established previously with a database file, a subfolder labeled 'Find Database File' appears.

Steps to connect to a PC-type database

1. Double-click the Find Database File folder, an Open dialog box appears for you to select a database file. The types of files that are available to select from are:
 - Microsoft Access (*.MDB)
 - Xbase, ACT! (*.DBF)
 - Paradox (*.DB)
 - Pervasive/Btrieve (*.DDF)
2. Select the PC-type database file and a list of available tables appear that allow you insert these tables into the Report Designer.
3. Select a table and click the arrow (>) button to add the table to the report.

Once these steps have been completed, design the report with the fields and format of your preference.

Working with More Data Sources

The More Data Sources folder does not include native connections to PC-type databases or ODBC connections. This folder leads to OLE DB connections and other native connections.

Data sources that appear in the More Data Sources folder are:

- ACT!3.0
- Borland Database Engine
- Btrieve
- CDO
- COM Data
- Field Definitions
- File System Data
- IBM DB2
- Informix
- Java Data
- Lotus Domino
- Mailbox Admin
- Message Tracking Log
- Microsoft ISS/Proxy Log Files
- NT Archived Event Log
- NT Current Event Log
- Oracle
- Outlook
- Public Folder ACL
- Public Folder Admin
- Public Folder Replica
- Sybase
- Web/IIS Log Files
- xBase

The following list of data sources appear only if the database client is installed on the computer:

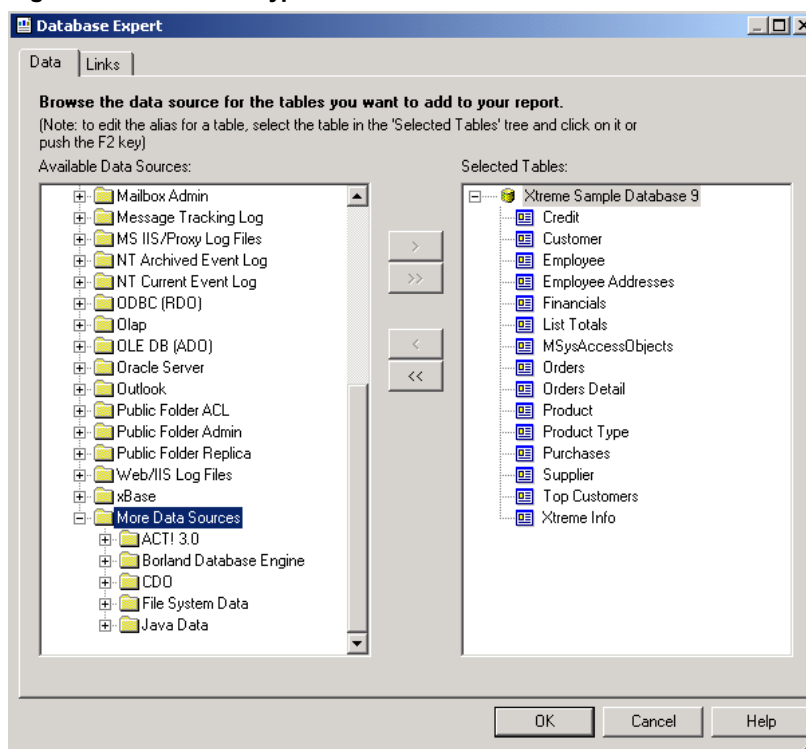
- IBM DB2
- Informix Online Server
- Oracle Server

- Sybase Server
- Lotus Notes/Domino Server
- Exchange Folders/Address Book
- Outlook

Steps to connect to a data source in the More Data Sources folder

1. Double-click the file folder of your data source type.
2. Enter the required information, such as logon information to access the data source.
3. Click **OK**.

Figure 8: Data source types in the More Data Sources Folder



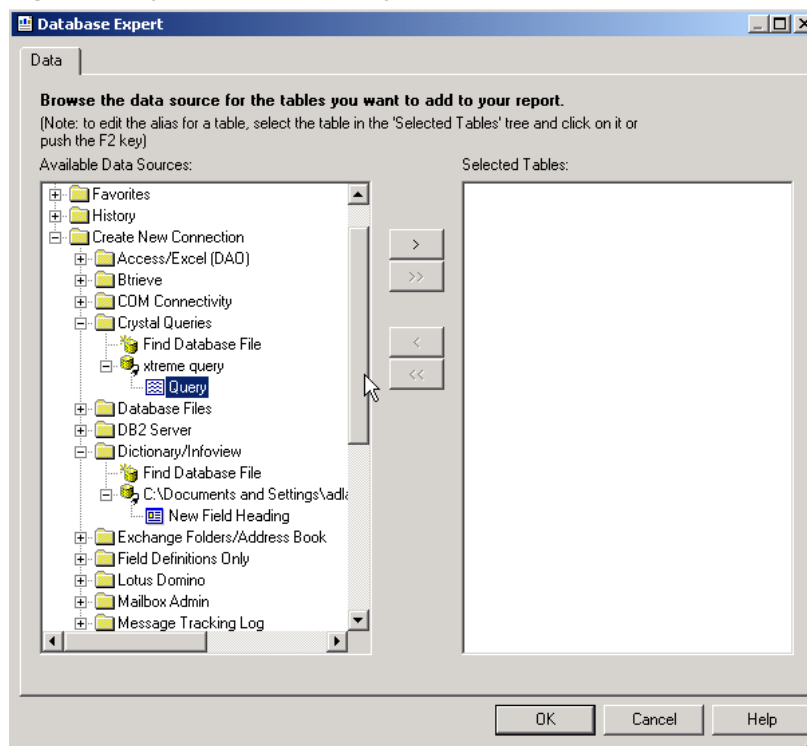
Once you have successfully configured a connection to the data source, tables, views, or stored procedures will appear below that data source's folder.

Working with Dictionary/Query

Crystal Dictionaries and Crystal Queries can be selected through the Database Expert. The Dictionary/Infoview folder is used for connections to Crystal Dictionaries, and Crystal Queries folder is used for connections to Crystal Queries.

Upon expanding the Dictionary/Infoview folder or Crystal Queries folder, a Find Database File item will appear if a connection has been previously configured.

Figure 9: Crystal Queries and Crystal Dictionaries



Steps to connect to a Dictionary file

1. Double-click the Dictionary/Infoview folder
2. Double-click on Find Database File if a connection has already been established.
3. Search for the DC5 or DCT file in the File Open dialog box.
4. Select the file and click **OK**.

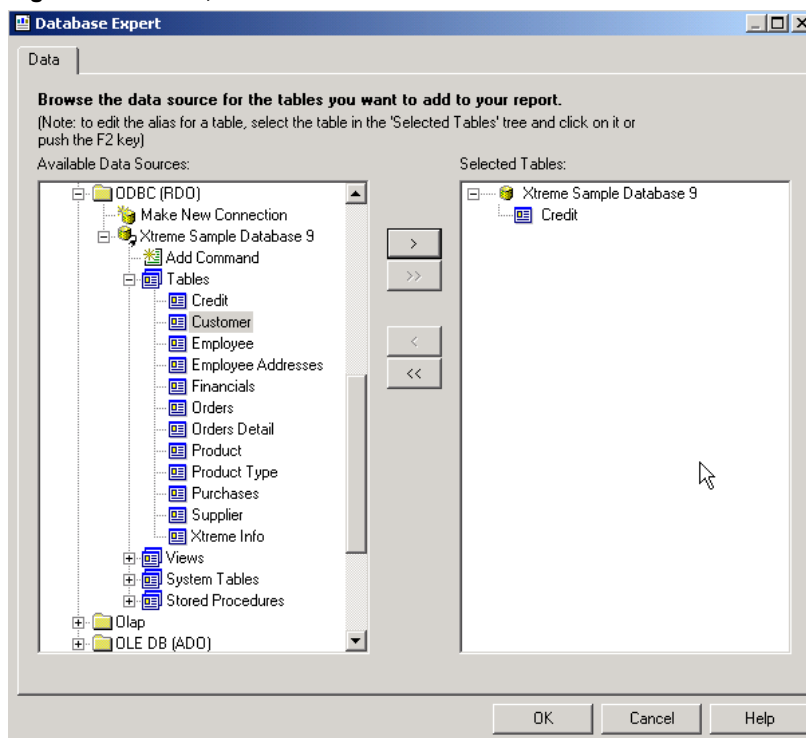
Steps to connect to a Query file

1. Double-click on the Crystal Queries folder.
2. Double-click on Find Database File if a connection has already been established.
3. Search for the QRY file in the File Open dialog box.
4. Select the file and click **OK**.

Selecting Tables, Views, or Stored Procedures

When you have successfully connected to a data source, a list of available tables, views and stored procedures appear. Insert table objects, a view or a stored procedure into the Crystal Reports Designer by highlighting the object and clicking the arrow (>) button.

Figure 10: Tables, Views or Stored Procedures



Finding More Information

To find related information, search for these file names on our support site at:

<http://support.crystaldecisions.com/docs>

- [Cr9_database_drivers.pdf](#) – Database Drivers
- [Cr_database_menu.pdf](#) – Differences between the Database menu in Crystal Reports 8.5 and 9
- [Cr_query_engine.pdf](#) – How the new query engine affects reports in Crystal Reports 9

Contacting Crystal Decisions for Technical Support

We recommend that you refer to the product documentation and that you visit our Technical Support web site for more resources.

Self-serve Support:

<http://support.crystaldecisions.com/>

Email Support:

<http://support.crystaldecisions.com/support/answers.asp>

Telephone Support:

<http://www.crystaldecisions.com/contact/support.asp>