

Getting Started With SAP BusinessObjects Dashboard Builder



SAP BusinessObjects Webinar Series
June 2009

Agenda



Introduction to Dashboard Builder

Getting Started Demonstrations

- Universe based analytics
- Design the layout of your dashboard
- Add content to your dashboard
- Link Dashboard components with Content Linking
- Drill using OpenDocument
- Preferences and Printing

What is Dashboard Builder?



Dashboard Builder is a **content layout** tool (page building) for creating **composite dashboards**.

- Organize and display all kinds of BusinessObjects content: Web Intelligence, Crystal Reports, Voyager, Xcelsius, or external content such as Web Pages via URL.
- Interportlet communication capabilities for enabling page components to talk to each other and exchange information.



Composite Dashboard



BUSINESSOBJECTS INFOVIEW Welcome: Administrator

Home | Document List | Open | Send To | Dashboards

Log Out | Preferences | About | Help

Corporate Dashboard > Finance Edit Dashboard

Sales | **Finance** | Summary

Sales by Product Widget

Year to Date Sales	Year to Date Budget	Difference
\$162,606	\$91,281	71,324.81

Sales Rep 1
Sales Rep 2
Sales Rep 3
Sales Rep 4
Sales Rep 5
Sales Rep 6
Sales Rep 7
Sales Rep 8
Sales Rep 9
Sales Rep 10
Sales Rep 11
Sales Rep 12
Sales Rep 13
Sales Rep 14

Monthly Sales by Sales Rep
Sales Rep 1

Contribution: 6.64%

Financial Sector Summary Google Widget

Finance Sector Summary

Basic Materials	-0.13%
Capital Goods	-0.30%
Conglomerates	-0.21%
Cons. Cyclical	-0.41%
Cons. Non-Cyclical	-0.41%
Energy	-0.18%
Financial	-0.60%
Healthcare	-0.12%
Services	+0.06%
Technology	+0.02%
Transportation	+0.82%
Utilities	+0.04%

* Data from 5/28/2008 10:50am EDT, and may be delayed.
[More Gadgets by Rob Kodev](#)

Weather widget Google

Live Weather

New York [edit](#) WeatherBug

Hi: 70° F
53.9°
Lo: 51° F

Sunny. Highs in the upper 60s. Northwest winds 10 to 15. [more...](#)

Thu: 74° / 58° Fri: 76° / 58° Sat: 50% chance 71° / 59°

Forecast
Radar
News
Cameras

POWERED BY:

Formatted Report for Drill

State	City	Sales revenue
New York	New York	3,151,021.70
Texas	Houston	2,246,198.40
California	Los Angeles	1,656,675.70
California	San Francisco	1,336,003.30
Texas	Austin	1,135,479.10
Illinois	Chicago	1,134,085.40
DC	Washington	1,053,581.40
Massachusetts	Boston	887,169.20
Colorado	Colorado Springs	843,584.20
Florida	Miami	811,923.60
Texas	Dallas	803,420.80
		15,059,142.80

Total Sales Widget

Business Objects Login

	Electronics	Sports	Telecom
Asia PAC	127	101	410
EMEA	27	24	69
Europe	154	155	501
Latin America	37	33	133
North America	116	122	375

Electronics
Asia PAC

Sports
Asia PAC

Telecom
Asia PAC

Discussions

Dashboard Builder 3.1

What is New

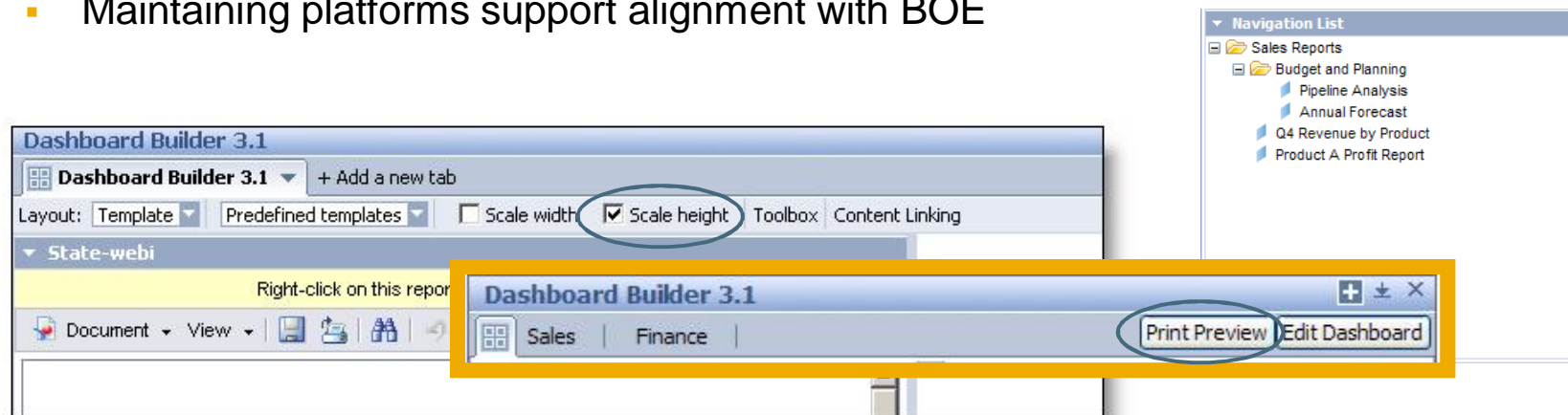


Key New Features

- Printing
- Interportlet Communication Framework
- New Scale to Height in Templates mode
- Enhanced look and feel of the Navigation List analytic

Platform Support

- Technology update to support 64-bit Itanium deployments
- Maintaining platforms support alignment with BOE



Agenda



Introduction to Dashboard Builder

Getting Started Demonstrations

- **Universe based analytics**
- Design the layout of your dashboard
- Add content to your dashboard
- Link Dashboard components with Content Linking
- Drill using OpenDocument
- Preferences and Printing

Agenda



Introduction to Dashboard Builder

Getting Started Demonstrations

- Universe based analytics
- **Design the layout of your dashboard**
- Add content to your dashboard
- Link Dashboard components with Content Linking
- Drill using OpenDocument
- Preferences and Printing

Agenda



Introduction to Dashboard Builder

Getting Started Demonstrations

- Universe based analytics
- Design the layout of your dashboard
- **Add content to your dashboard**
- Link Dashboard components with Content Linking
- Drill using OpenDocument
- Preferences and Printing

Agenda

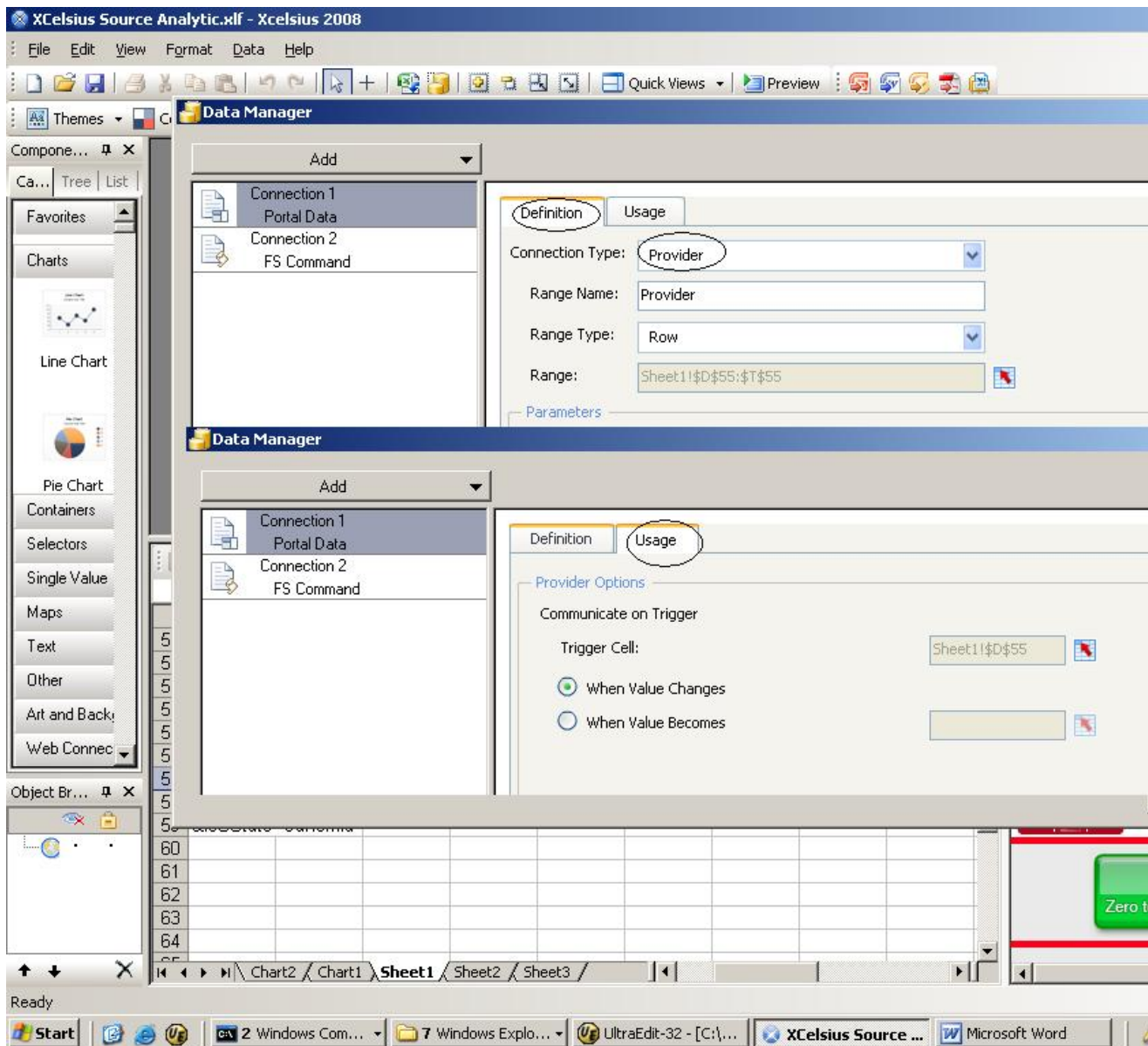


Introduction to Dashboard Builder

Getting Started Demonstrations

- Universe based analytics
- Design the layout of your dashboard
- Add content to your dashboard
- **Link Dashboard components with Content Linking**
- Drill using OpenDocument
- Preferences and Printing

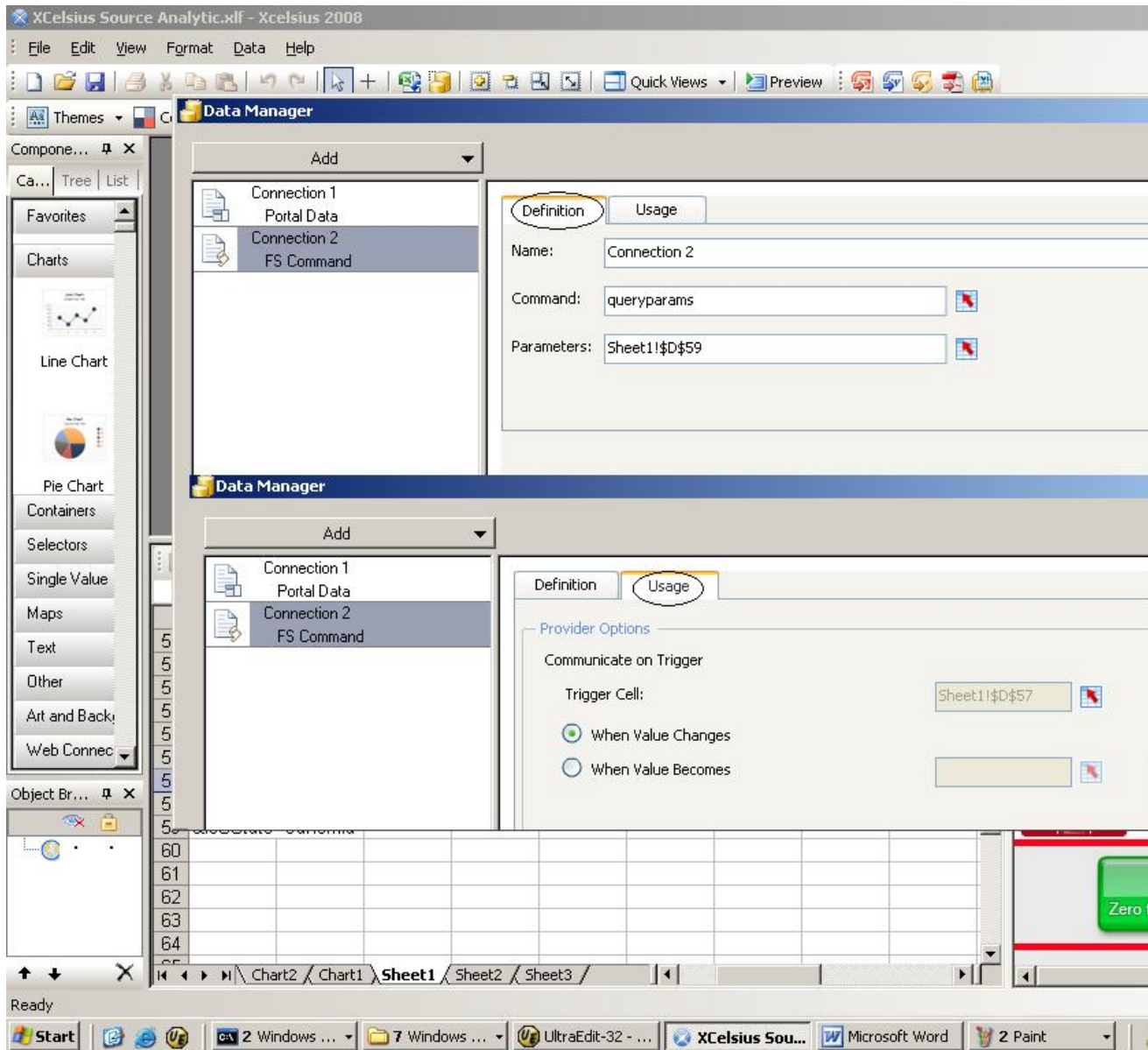
Xcelsius models as a Source



How to configure an Xcelsius model as a Source

1. Add a Portal Data Provider Connection
2. Specify which cell will trigger the event

Xcelsius models as a Source



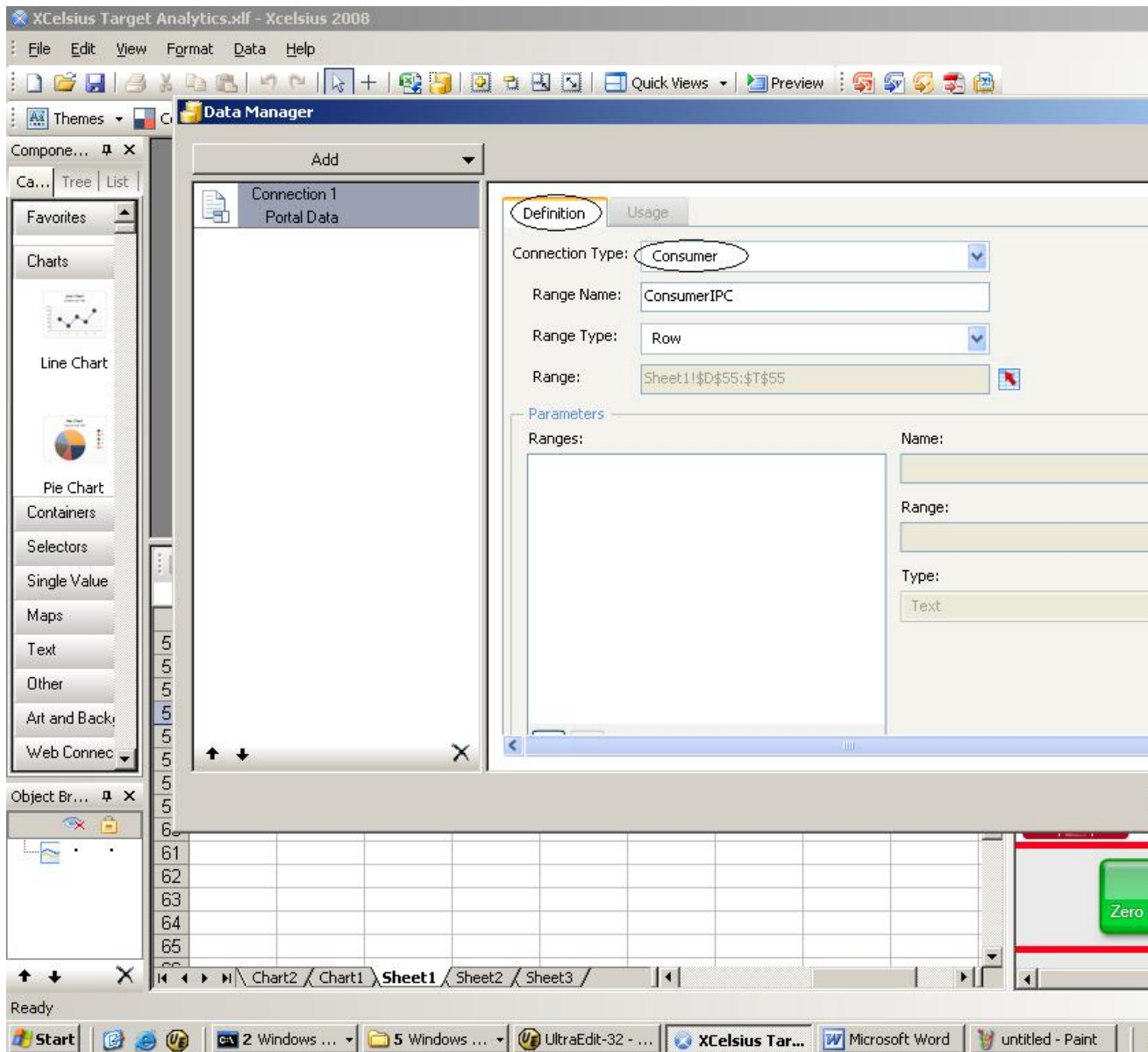
How to configure an Xcelsius model as a Source

1. Add a Portal Data Provider Connection
2. Specify which cell will trigger the event

If you are using prompted reports as a Target:

3. Add an FS Command connection
4. Set the Command as **queryparams**
5. Choose the cell with the prompt string
i.e. "&lsSState="&D56

Configuring Xcelsius as Targets



How to configure an Xcelsius model as a Target

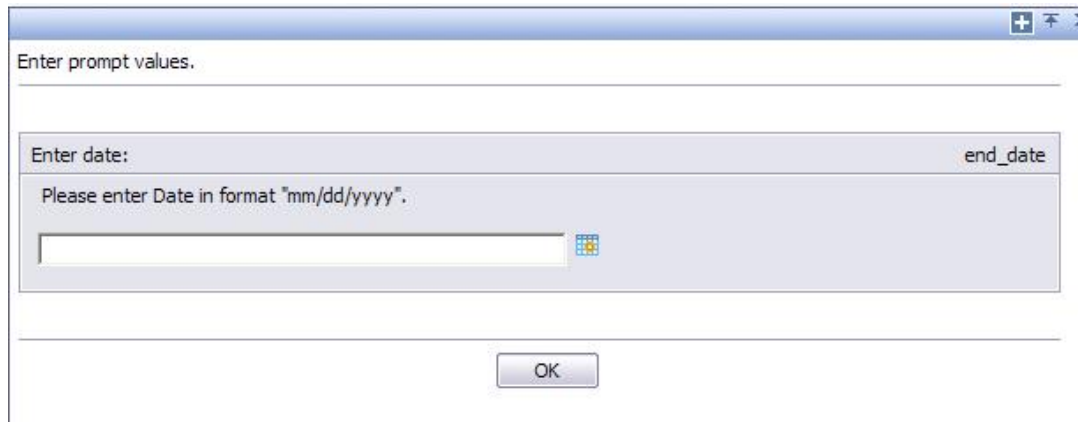
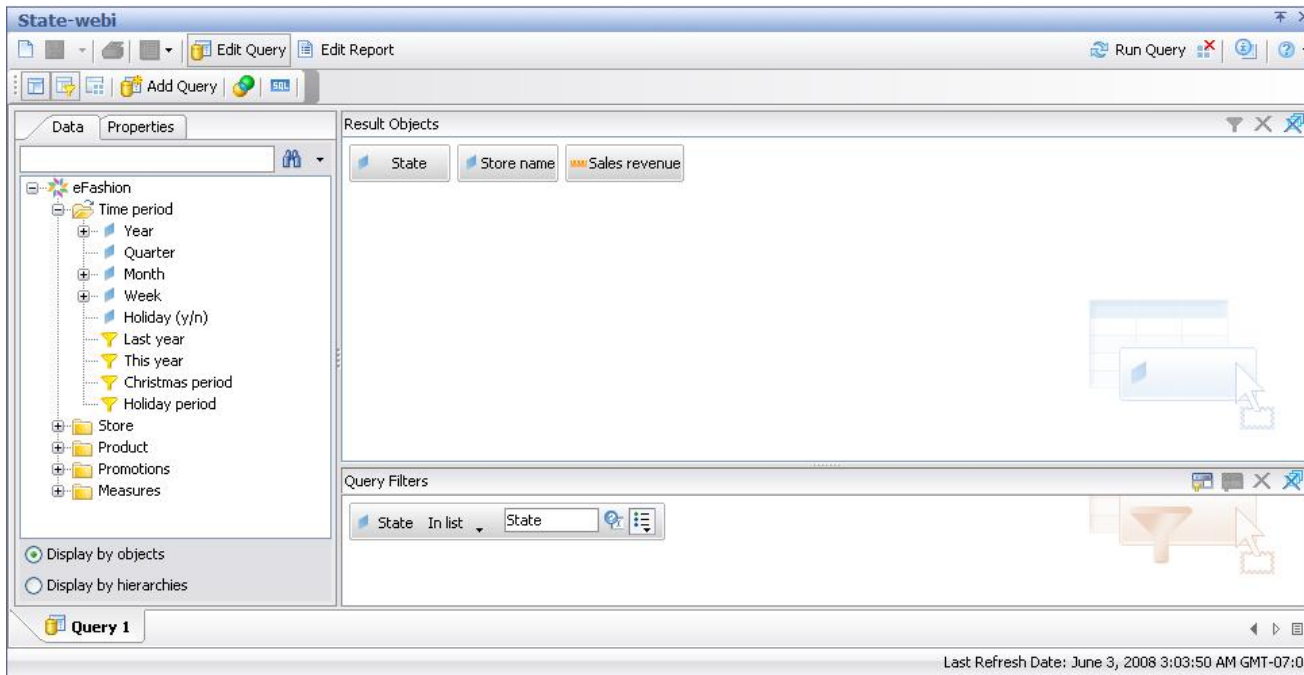
1. Add a Portal Data Consumer Connection
2. Specify which cell will receive the value from an external event

Configuring Reports as Targets



How to configure reports as a Target

1. Use Prompts as per usual



Agenda



Introduction to Dashboard Builder

Getting Started Demonstrations

- Universe based analytics
- Design the layout of your dashboard
- Add content to your dashboard
- Link Dashboard components with Content Linking
- **Drill using OpenDocument**
- Preferences and Printing

Agenda



Introduction to Dashboard Builder

Getting Started Demonstrations

- Universe based analytics
- Design the layout of your dashboard
- Add content to your dashboard
- Link Dashboard components with Content Linking
- Drill using OpenDocument
- **Preferences and Printing**

Questions

Agenda



Introduction to Dashboard Builder

Getting Started Demonstrations

- Universe based analytics
- Design the layout of your dashboard
- Add content to your dashboard
- Link Dashboard components with Content Linking
- Drill using OpenDocument

Questions

Thank you!



No part of this publication may be reproduced or transmitted in any form or for any purpose without the express permission of SAP AG. The information contained herein may be changed without prior notice.

Some software products marketed by SAP AG and its distributors contain proprietary software components of other software vendors.

SAP, R/3, xApps, xApp, SAP NetWeaver, Duet, SAP Business ByDesign, ByDesign, PartnerEdge and other SAP products and services mentioned herein as well as their respective logos are trademarks or registered trademarks of SAP AG in Germany and in several other countries all over the world. Business Objects and the Business Objects logo, BusinessObjects, Crystal Reports, Crystal Decisions, Web Intelligence, Xcelsius and other Business Objects products and services mentioned herein as well as their respective logos are trademarks or registered trademarks of Business Objects S.A. in the United States and in several other countries. Business Objects is an SAP Company. All other product and service names mentioned and associated logos displayed are the trademarks of their respective companies. Data contained in this document serves informational purposes only. National product specifications may vary.

The information in this document is proprietary to SAP. No part of this document may be reproduced, copied, or transmitted in any form or for any purpose without the express prior written permission of SAP AG. This document is a preliminary version and not subject to your license agreement or any other agreement with SAP. This document contains only intended strategies, developments, and functionalities of the SAP® product and is not intended to be binding upon SAP to any particular course of business, product strategy, and/or development. Please note that this document is subject to change and may be changed by SAP at any time without notice. SAP assumes no responsibility for errors or omissions in this document. SAP does not warrant the accuracy or completeness of the information, text, graphics, links, or other items contained within this material. This document is provided without a warranty of any kind, either express or implied, including but not limited to the implied warranties of merchantability, fitness for a particular purpose, or non-infringement.

SAP shall have no liability for damages of any kind including without limitation direct, special, indirect, or consequential damages that may result from the use of these materials. This limitation shall not apply in cases of intent or gross negligence.

The statutory liability for personal injury and defective products is not affected. SAP has no control over the information that you may access through the use of hot links contained in these materials and does not endorse your use of third-party Web pages nor provide any warranty whatsoever relating to third-party Web pages.