

# Display Popup Window and Dialog Box in ALV



## Applies to:

**SAP ECC 6.0, SAP Net weaver 2004s.**

## Summary

This document explains how to display an ALV in a popup and dialog box. From the popup the required entries can be displayed in a dialog box.

**Author:** Christy Jacob

**Company:** Appexus Technologies Pvt.Ltd.

**Created on:** 30 June 2011

## Author Bio

Christy Jacob, SAP ABAP Consultant with Appexus Technologies.

## Table of Contents

Introduction .....	3
Purpose.....	3
Technical Process. ....	3
Step by step solution .....	3
1. Creating a Program.....	3
2. Program .....	3
Output. ....	7
Conclusion. ....	8
Related Content.....	9
Disclaimer and Liability Notice.....	10

## Introduction

The article is about ALV display in popup window and dialog box. From the popup window the required data can be selected and viewed in the dialog box.

## Purpose

If data needs to be selected from a popup and corresponding details displayed

## Technical Process.

### Step by step solution

#### 1. Creating a Program

Go to SE38 and create an Z report program as below.

#### 2. Program

```
REPORT zsapr_alvpopdialog.

*&-----*
*& Type-pools declaration *
*&-----*
TYPE-POOLS : slis.

*&-----*
*& Types declaration *
*&-----*
TYPES      : BEGIN OF ty_final,
             matnr TYPE matnr,
             ersda TYPE ersda,
             ernam TYPE ernam,
             mtart TYPE mtart,
             mbrsh TYPE mbrsh,
             matkl TYPE matkl,
             maktx TYPE maktx,
             checkbox(1),
             END OF ty_final.

* Internal table and work area for table MARA
DATA      : t_mara TYPE TABLE OF mara,
           x_mara TYPE mara.

* Internal table and work area for table MAKT
DATA      : t_makt TYPE TABLE OF makt,
           x_makt TYPE makt.

* Internal table and work area for output in pop-up
DATA      : t_final TYPE TABLE OF ty_final,
           x_final TYPE ty_final.

* Internal table and work area for ALV dialog display
DATA      : t_dialog TYPE TABLE OF ty_final,
           x_dialog TYPE ty_final.
```

```

* for ALV display
DATA      : t_fieldcat1 TYPE slis_t_fieldcat_alv,
           t_fieldcat2 TYPE slis_t_fieldcat_alv,
           t_layout     TYPE slis_layout_alv,
           x_fieldcat1 TYPE slis_fieldcat_alv,
           x_fieldcat2 TYPE slis_fieldcat_alv.

* Subroutine for data fetching
PERFORM data_fetch.

* Subroutine for pop-up display
PERFORM popup_disp.

* Subroutine for dialog display
PERFORM dialog_disp.

*&-----*
*&      Form  DATA_FETCH
*&-----*
*      text
*-----*
*  --> p1      text
*  <-- p2      text
*-----*
FORM data_fetch .

*Fetch materials and related data  from table MARA
  SELECT matnr
         ersda
         ernam
         mtart
         mbrsh
         matkl FROM mara
              INTO CORRESPONDING FIELDS OF TABLE t_mara
              WHERE mbrsh = 'M'AND ernam = 'D046387'.

  IF t_mara IS NOT INITIAL .

*Fetch description of materials from table MAKT
  SELECT matnr
         maktx FROM makt
              INTO CORRESPONDING FIELDS OF TABLE t_makt
              FOR ALL ENTRIES IN t_mara WHERE matnr = t_mara-matnr.

  ENDIF.

* Appending the selected values in to the final table
  LOOP AT t_mara INTO x_mara.

    x_final-matnr = x_mara-matnr.
    x_final-ersda = x_mara-ersda.
    x_final-ernam = x_mara-ernam.
    x_final-mtart = x_mara-mtart.
    x_final-mbrsh = x_mara-mbrsh.
    x_final-matkl = x_mara-matkl.

```

```

READ TABLE t_makt INTO x_makt WITH KEY matnr = x_mara-matnr.
x_final-maktx = x_makt-maktx.
APPEND x_final TO t_final.
CLEAR x_final.

ENDLOOP.

ENDFORM.                " DATA_FETCH
*&-----*
*&      Form  POPUP_DISP
*&-----*
*      text
*-----*
* --> p1      text
* <-- p2      text
*-----*

FORM popup_disp .

* Fieldcatelog for popup using macros
CLEAR x_fieldcat1.

DEFINE fieldcat1 .
  x_fieldcat1-row_pos   = &1.
  x_fieldcat1-col_pos   = &2.
  x_fieldcat1-fieldname = &3.
  x_fieldcat1-tabname   = &4.
  x_fieldcat1-seltext_m = &5.
  x_fieldcat1-outputlen = &6.
  append x_fieldcat1 to t_fieldcat1.
  clear x_fieldcat1.
END-OF-DEFINITION.

fieldcat1  1  1  'CHECKBOX'  'T_FINAL'  'Select'      ' ' .
fieldcat1  1  2  'MATNR'    'T_FINAL'  'Material Number'  10 .
fieldcat1  1  3  'MAKTX'    'T_FINAL'  'Description'     22.

* Function module for ALV popup
CALL FUNCTION 'REUSE_ALV_POPUP_TO_SELECT'
  EXPORTING
    i_title           = 'MATERIAL SELECTION'
    i_zebra           = 'X'
    i_checkbox_fieldname = 'CHECKBOX'
    i_tabname         = 'T_FINAL'
    it_fieldcat       = t_fieldcat1
    i_callback_program = sy-repid
  TABLES
    t_outtab          = t_final
  EXCEPTIONS
    PROGRAM_ERROR     = 1
    OTHERS             = 2
  .

* Appending the selected materials into the internal table
LOOP AT t_final INTO x_final WHERE checkbox = 'X'.

  x_dialog-matnr = x_final-matnr.

```

```

x_dialog-ersda = x_final-ersda.
x_dialog-ernam = x_final-ernam.
x_dialog-mtart = x_final-mtart.
x_dialog-mbrsh = x_final-mbrsh.
x_dialog-matkl = x_final-matkl.
x_dialog-maktx = x_final-maktx.
APPEND x_dialog TO t_dialog.
CLEAR x_dialog.

ENDLOOP.

ENDFORM.                " POPUP_DISP
*-----*
*      Form  DIALOG_DISP
*-----*
*      text
*-----*
*  --> p1      text
*  <-- p2      text
*-----*
FORM dialog_disp .
* Fieldcatalog for dialog box using macros
CLEAR x_fieldcat2.

DEFINE fieldcat2 .
  x_fieldcat2-row_pos      = &1.
  x_fieldcat2-col_pos      = &2.
  x_fieldcat2-fieldname    = &3.
  x_fieldcat2-tabname      = &4.
  x_fieldcat2-seltext_m    = &5.
  x_fieldcat2-outputlen    = &6.
  append x_fieldcat2 to t_fieldcat2.
  clear x_fieldcat2.
END-OF-DEFINITION.

fieldcat2  1  1  'MATNR'    'T_DIALOG'  'Material Number'  19 .
fieldcat2  1  2  'ERSDA'    'T_DIALOG'  'Created On'       9.
fieldcat2  1  3  'ERNAM'    'T_DIALOG'  'Name of Person'  14.
fieldcat2  1  4  'MTART'    'T_DIALOG'  'Material Type'    11.
fieldcat2  1  5  'MBRSH'    'T_DIALOG'  'Industry Sector'  12.
fieldcat2  1  6  'MAKTX'    'T_DIALOG'  'Description'      25.

* Layout for ALV grid display
t_layout-zebra = 'X'.

* Function module for ALV grid display
CALL FUNCTION 'REUSE_ALV_GRID_DISPLAY'
  EXPORTING
    i_callback_program      = sy-repid
    i_grid_title             = 'MATERIAL DETAILS'
    is_layout                = t_layout
    it_fieldcat              = t_fieldcat2
  TABLES
    t_outtab                 = t_dialog

```

```

EXCEPTIONS
  PROGRAM_ERROR           = 1
  OTHERS                  = 2

```

```

IF sy-subrc <> 0.
* MESSAGE ID SY-MSGID TYPE SY-MSGTY NUMBER SY-MSGNO
* WITH SY-MSGV1 SY-MSGV2 SY-MSGV3 SY-MSGV4.
ENDIF.

```

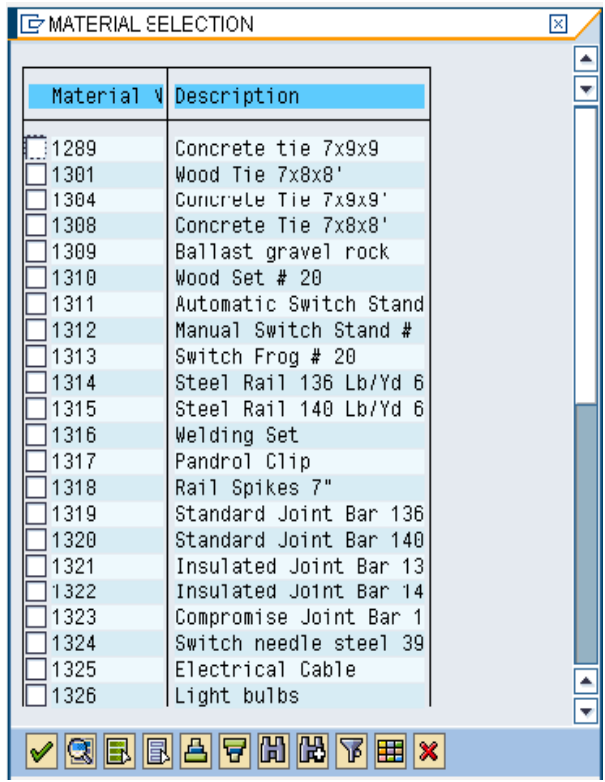
```

ENDFORM.                " DIALOG_DISP

```

### Output.

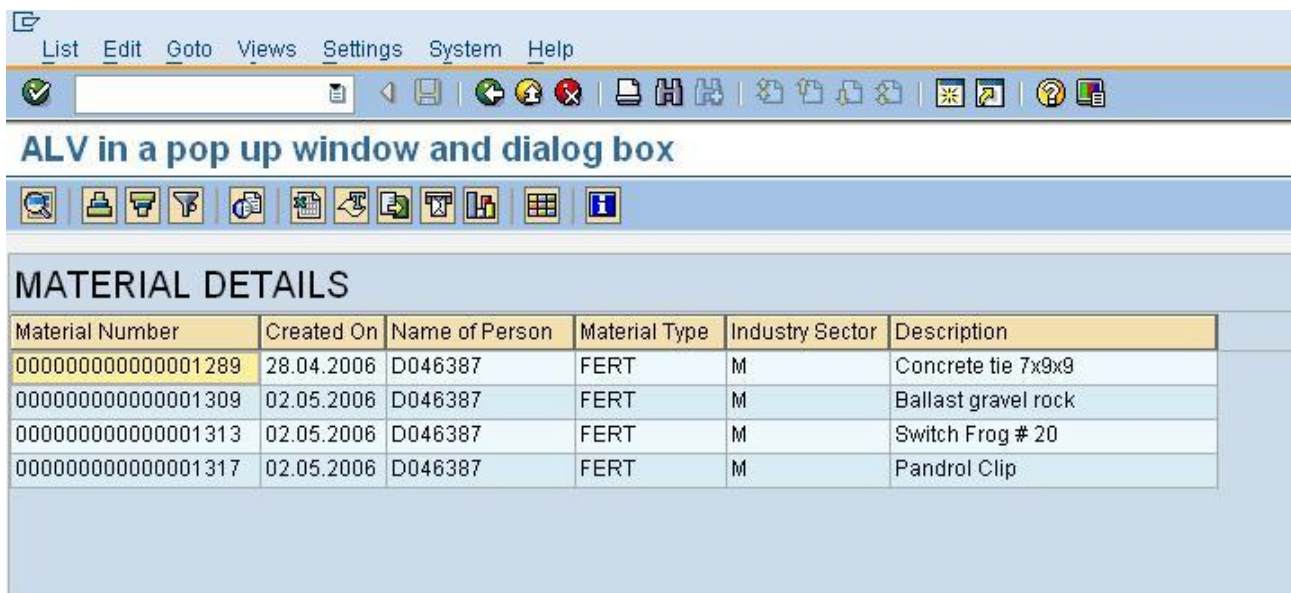
ALV popup display of materials and its description.



Click the checkbox in the popup for selecting required materials fields



ALV dialog box display of the selected materials



### Conclusion.

Required fields can be displayed in an ALV dialog box after selecting the required checkbox in the ALV popup.



## **Related Content**

[ALV Tutorial](#)

[ALV Programming](#)

[ALV](#)

## **Disclaimer and Liability Notice**

This document may discuss sample coding or other information that does not include SAP official interfaces and therefore is not supported by SAP. Changes made based on this information are not supported and can be overwritten during an upgrade.

SAP will not be held liable for any damages caused by using or misusing the information, code or methods suggested in this document, and anyone using these methods does so at his/her own risk.

SAP offers no guarantees and assumes no responsibility or liability of any type with respect to the content of this technical article or code sample, including any liability resulting from incompatibility between the content within this document and the materials and services offered by SAP. You agree that you will not hold, or seek to hold, SAP responsible or liable with respect to the content of this document.