

# Force Copy Queries from One Info Provider to Another with Different Structure



## Applies to:

SAP BI 7.0. For more information, visit the [Business Intelligence homepage](#)

## Summary

This article aims at demonstrating how to force copy queries from one infoprovider to another which have different structure. (I.e. not all fields of the source infoprovider present in the target infoprovider).

**Author:** Maheshsingh Mony

**Company:** TCS (TATA Consultancy Services Limited)

**Created on:** 29 September 2011

## Author Bio:



Maheshsingh Mony is working with TCS (TATA Consultancy Services Limited) India. He has 5+ years of full time experience in implementation of SAP BI projects, Migration, Rollout, and Support Projects. His expertise includes SAP BI, ABAP.

## Table of Contents

Introduction .....	3
Step 1: Creating Custom Program .....	3
Source Code .....	4
Step2: Program execution .....	7
Disclaimer and Liability Notice.....	11

## Introduction

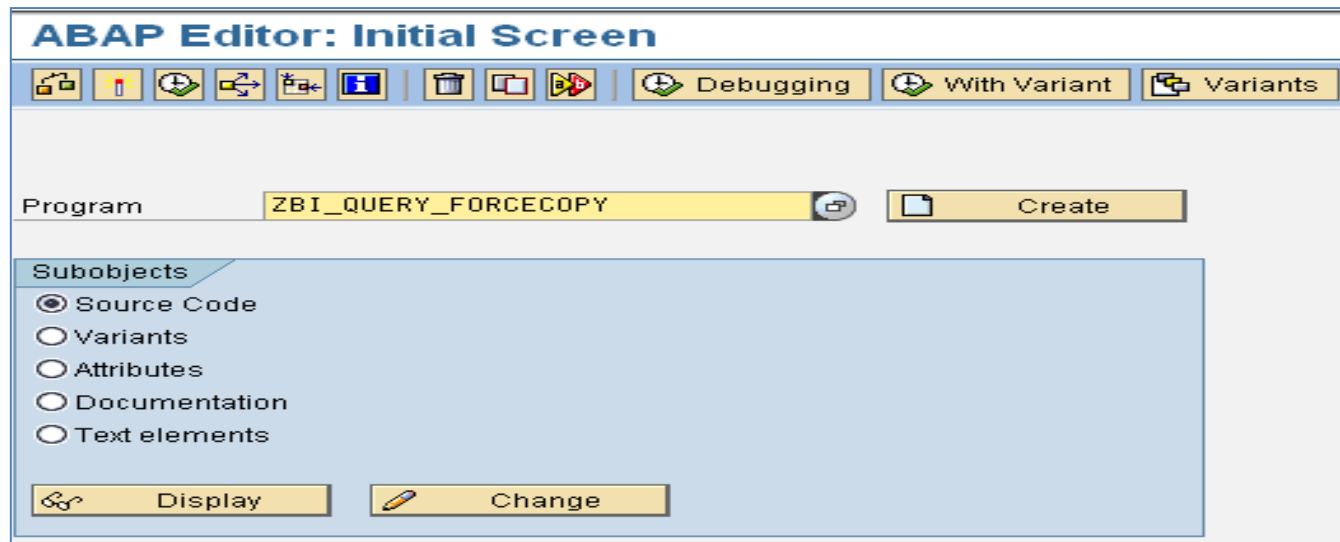
In SAP BI we all know that we can copy query between two infoproviders through the T-code **RSZC**. However to copy queries between these Info providers, both source and target Infoproviders must have same structure.

But in many cases it is not possible to copy queries between two infoproviders as they don't have the same no of fields or have some field missing in it

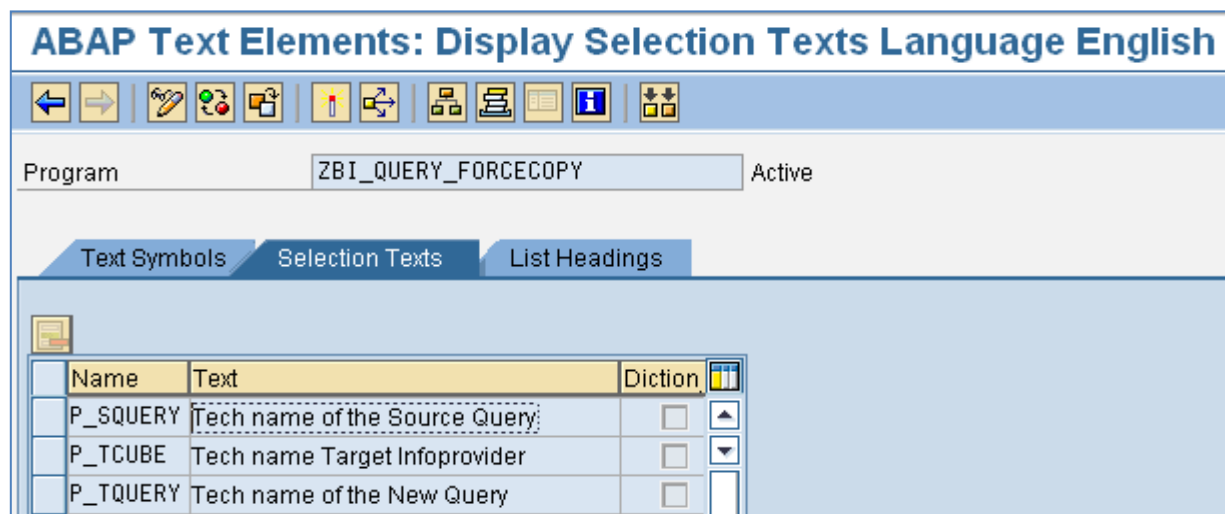
To overcome this issue we have created custom program with name '**ZBI\_FORCE\_COPY\_QUERY**' by this 'Z' program we will be able to force copy the queries.

## Step 1: Creating Custom Program

Go to Se38 and create an executable custom program.



Enter the below entries in "Selection Texts" tab.



Enter the below entries in 'Text Symbols' tab.

Sy..	Text	dLen	mL..
001	Please enter the Query details	30	30
		0	0

### Source Code

Paste the below code and activate the program

```

*&-----*
*& Report  ZBI_QUERY_FORCECOPY
*&
*&-----*
*&
*&
*&-----*

REPORT  ZBI_QUERY_FORCECOPY.

TYPE-POOLS:
  RS,           "BW global
  RRMS,        "message server
  RSZ,         "Qry definition global
  RZX0,        "Qry RFC interface
  RZD1.        "Qry definition database

TABLES: SSCRFIELDS.

TYPES:  BEGIN OF TY_RSRREPDIR,
        COMPUID TYPE SYSUUID_25,
        INFOCUBE TYPE RSINFOCUBE,
        COMPID TYPE RSZCOMPID,
        END OF TY_RSRREPDIR.

DATA: IT_RSRREPDIR TYPE TABLE OF TY_RSRREPDIR,
      WA_RSRREPDIR LIKE LINE OF IT_RSRREPDIR.

DATA: C_T_UID_SERVER TYPE RZX0_T_UID_SERVER_X,
      I_TARGET_INFOCUBE TYPE RSD_INFOCUBE,
      I_SOURCE_INFOCUBE TYPE RSD_INFOCUBE,
      I_SOURCE_COMPUID TYPE RSZ_UID.

DATA: I_T_COMP_RENAME type rzd1_t_comp_rename,
*      I_T_COMP_RENAME TYPE TABLE OF RZD1_S_COMP_RENAME_EXT,

```

```

WA_COMP_RENAME LIKE LINE OF I_T_COMP_RENAME.

SELECTION-SCREEN : BEGIN OF BLOCK SS01 WITH FRAME TITLE TEXT-001.

PARAMETERS : P_SQUERY TYPE RSZCOMPID  DEFAULT ' ' OBLIGATORY.
PARAMETERS : P_TQUERY TYPE RSZCOMPID  DEFAULT ' ' OBLIGATORY.
PARAMETERS : P_TCUBE  TYPE RSINFOCUBE  DEFAULT ' ' OBLIGATORY.

SELECTION-SCREEN : END OF BLOCK SS01.

START-OF-SELECTION.

SELECT COMPUID INFOCUBE COMPID
  FROM RSRREPDIR
  INTO CORRESPONDING FIELDS OF TABLE IT_RSRREPDIR
  WHERE OBJVERS = 'A' AND
*      INFOCUBE = P_scube and
      COMPID = P_SQUERY.

IF SY-SUBRC = 0.
  READ TABLE IT_RSRREPDIR INTO WA_RSRREPDIR WITH KEY COMPID = P_SQUERY.

  I_TARGET_INFOCUBE = P_TCUBE.
  I_SOURCE_INFOCUBE = WA_RSRREPDIR-INFOCUBE.
  I_SOURCE_COMPUID  = WA_RSRREPDIR-COMPUID.

  WA_COMP_RENAME-COMPUID = I_SOURCE_COMPUID.
  WA_COMP_RENAME-COMPID_OLD = P_SQUERY.
  WA_COMP_RENAME-COMPID_NEW = P_TQUERY.
  WA_COMP_RENAME-INFOCUBE = P_TCUBE.

  APPEND WA_COMP_RENAME TO I_T_COMP_RENAME.

  CALL FUNCTION 'RSZ_I_COPY_QRY_TO_CUBE_SINGLE'
    EXPORTING
      I_SOURCE_COMPUID           = I_SOURCE_COMPUID
      I_SOURCE_INFOCUBE         = I_SOURCE_INFOCUBE
      I_T_COMP_RENAME           = I_T_COMP_RENAME
      I_TARGET_INFOCUBE        = I_TARGET_INFOCUBE
      I_CHECK_COMPLIANCE       = ' '
*      I_DEFTP                   =
*      IMPORTING
*      E_T_MSG                   =
      CHANGING
        C_T_UID_SERVER         = C_T_UID_SERVER
    EXCEPTIONS
      NO_AUTHORITY              = 1
      NO_SOURCE_INFOCUBE_FOUND  = 2
      INFOCUBE_CHECK_FAILED     = 3
      ERROR_IN_COMPLIANCE_CHECK = 4
      INFOCUBES_NOT_COMPLIANT   = 5
      OTHERS                    = 6
      .
  IF SY-SUBRC <> 0.
    MESSAGE ID SY-MSGID TYPE SY-MSGTY NUMBER SY-MSGNO

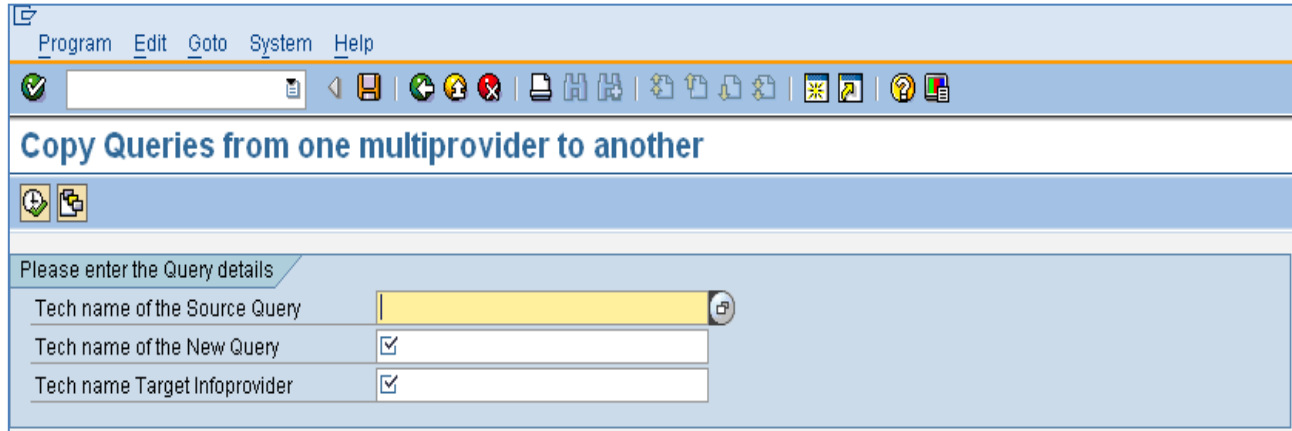
```

```
        WITH SY-MSGV1 SY-MSGV2 SY-MSGV3 SY-MSGV4.  
  
    ELSE.  
  
        MESSAGE 'Query copied successfully' TYPE 'S'.  
  
    ENDIF.  
  
    ELSE.  
  
        MESSAGE 'Please enter correct Query name' TYPE 'I'.  
  
    ENDIF.  
  
END-OF-SELECTION.
```

---

## Step2: Program execution

Once the program is been activated execute the program, you will get the below selection screen.



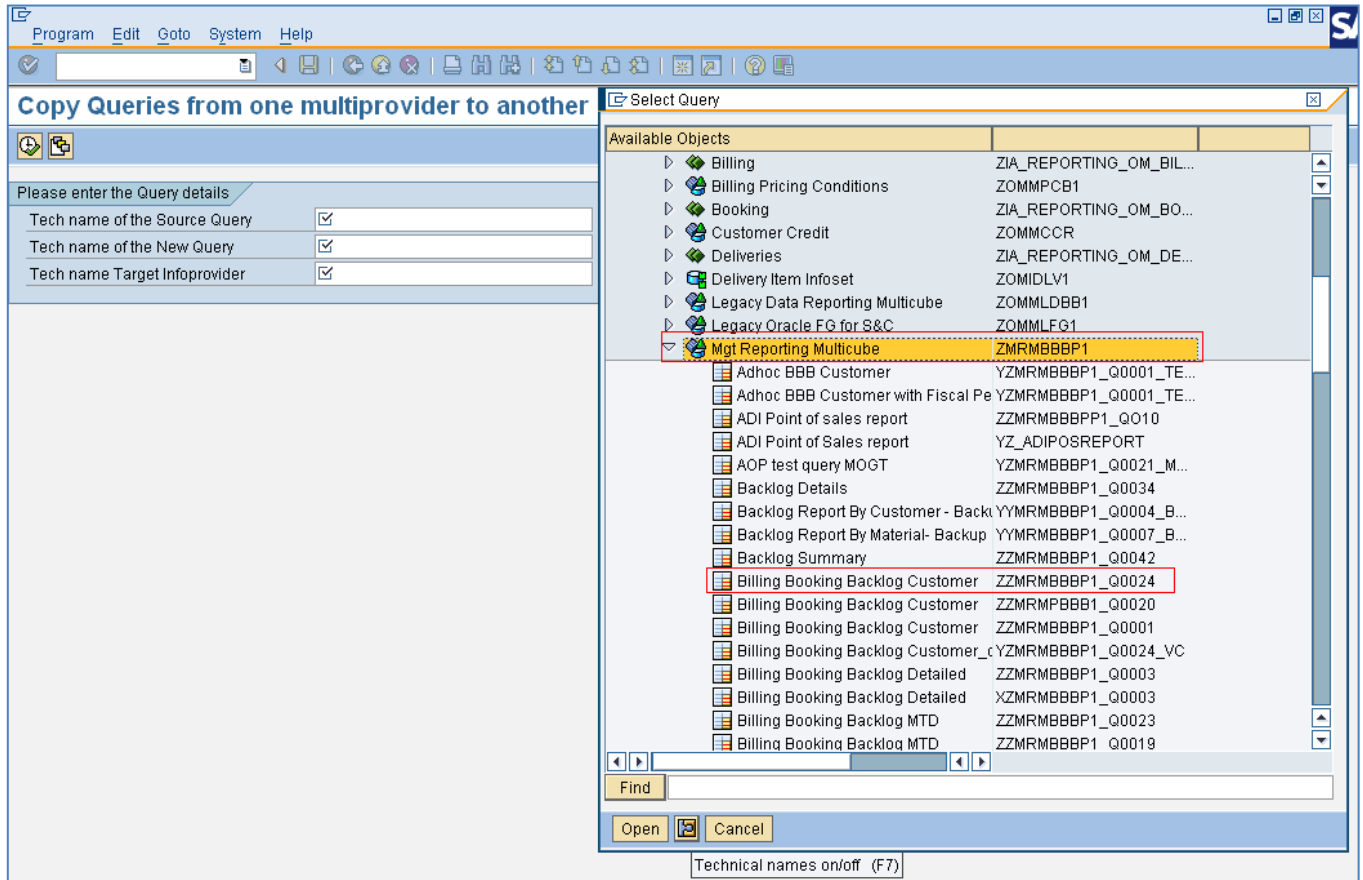
The screenshot shows the SAP selection screen for the program 'Copy Queries from one multiprovider to another'. The window title is 'Copy Queries from one multiprovider to another'. The menu bar includes 'Program', 'Edit', 'Goto', 'System', and 'Help'. The toolbar contains various icons for navigation and execution. The main area is titled 'Please enter the Query details' and contains three input fields:

Tech name of the Source Query	<input type="text"/>
Tech name of the New Query	<input checked="" type="checkbox"/>
Tech name Target Infoprovider	<input checked="" type="checkbox"/>

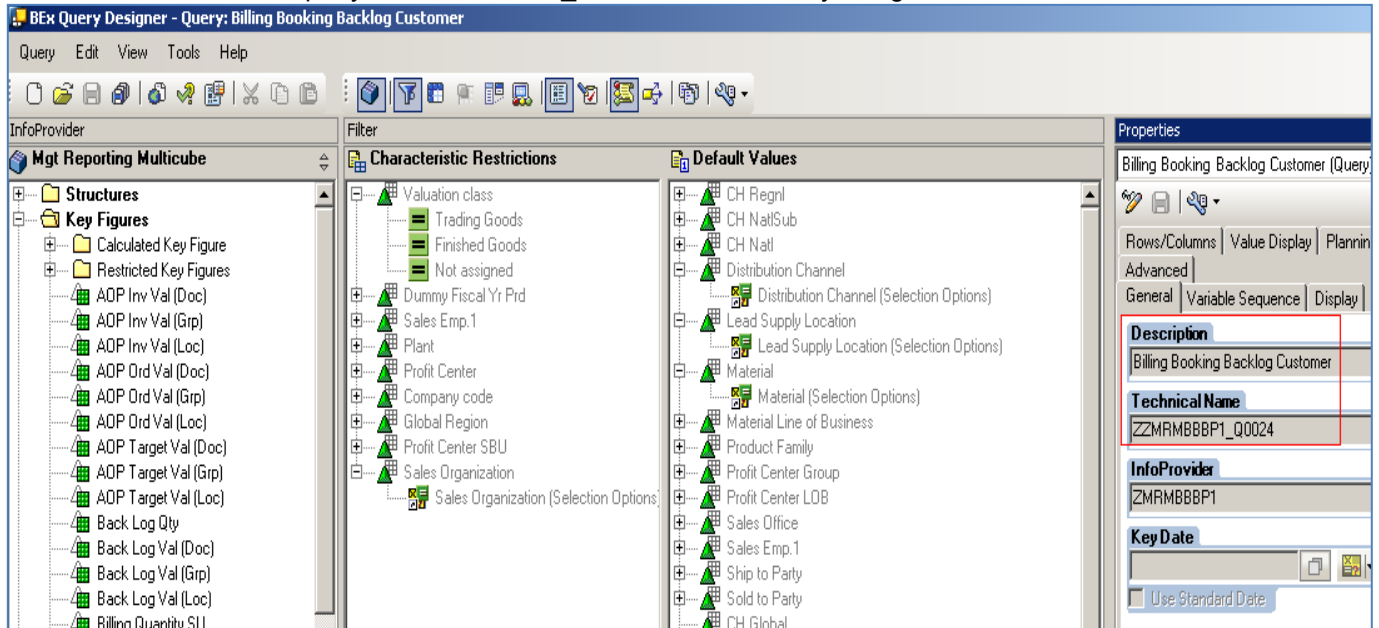
You need to input the values for the below fields present in the selection screen of the program

- Technical name of the Source Query
- Technical name of the New Query
- Tech name Target Infoprovider

You can select the Source query name using the F4 option. Here we have selected query “ZZMRMBBBP1\_Q0024” as the source Query built on the multiprovider “ZMRMBBBP1”.



This is how the selected query “ZZMRMBBBP1\_Q0024 looks in Query designer





Enter the name of the new query and the DSO/Cube/Multiprovider name on which you need the Source query to be copied.

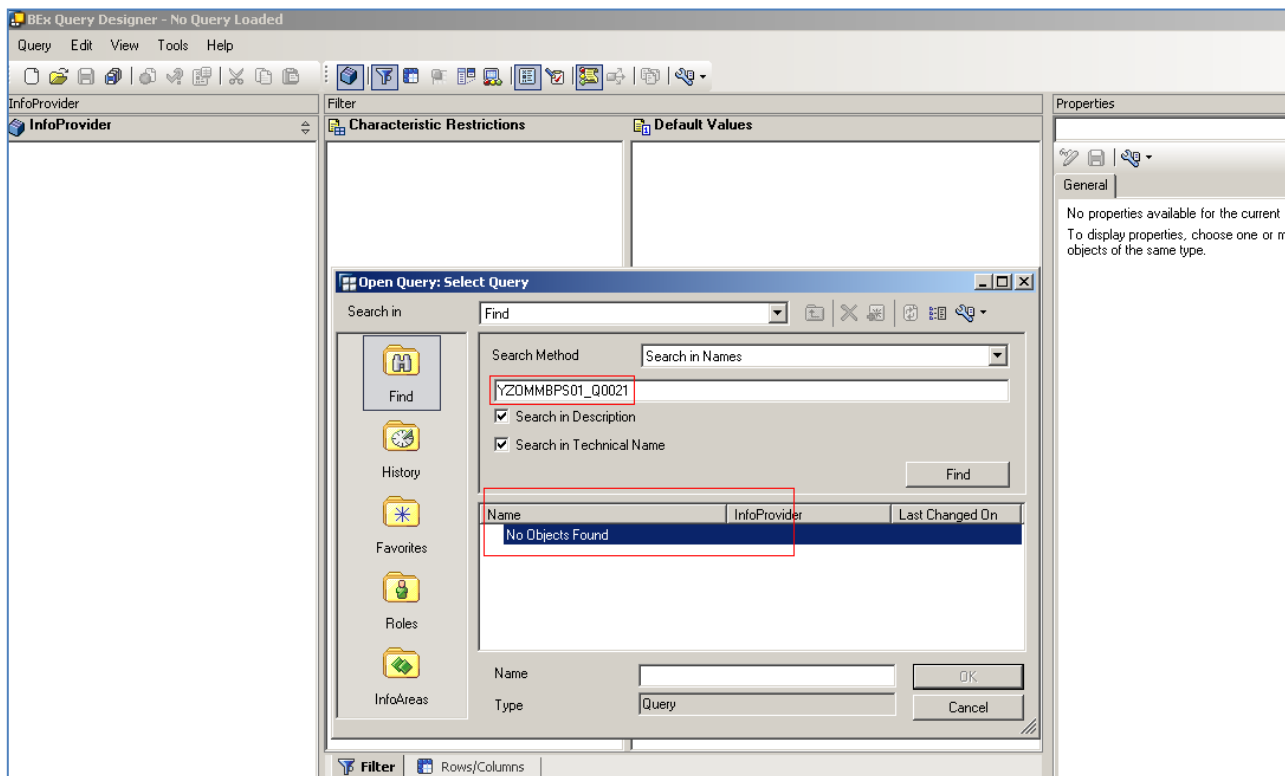
In our case the new query name is YZOMMBPS01\_Q0021 and the Multiprovider on which it should be built is ZOMMBPS01

Copy Queries from one multiprovider to another

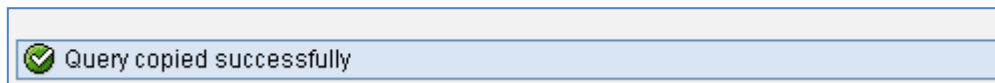
Please enter the Query details

Tech name of the Source Query	ZZMRMBBBP1_Q0024
Tech name of the New Query	YZOMMBPS01_Q0021
Tech name Target Infoprovider	ZOMMBPS01

Before execution the new query does not exist in the system



Execute the program you will get the below message



Check the new query in query designer it would now be present in the system.

The screenshot shows the SAP Query Designer interface for a query named "Billing Booking Backlog Customer". The interface is divided into several sections:

- InfoProvider:** A tree view on the left showing "Key Figures" under "OM:P&S Orders Netchange Booking Da".
- Filter:** A central panel with two columns: "Characteristic Restrictions" and "Default Values". The "Characteristic Restrictions" column includes items like "ZLGMATPLN\_\_OVAL\_CLASS", "ZCHREGION", "ZCHNATSUB", "ZCHNATNAL", "Distribution Channel", "ZLGMATERIAL\_ZLDSUPLOC", "Lead Supply Location (Selection Options)", "Material", "Material Line of Business", "ZLGMATERIAL\_ZPRODF", "Profit Center Group", "OPROFIT\_CTR\_ZPRCTRLOB", "Sales Office", "Sales Emp.1", "Ship to Party", "Sold to Party", "ZCHGLOBAL", "Sales Organization", "Sales group", "Reason for order", "Sales doc. type", "OPROFIT\_CTR\_ZPRCTRHF", "ZLGSOLDTO\_ZCUSTYPE", "Customer Pricing Group", "Material Pricing Group", "ZLGMATERIAL\_ZPRODLIN", "Vendor", "Sales Emp.2", "Sales Emp.3", "Sales Emp.4", "Sales Emp.5", and "Product Line Sub-Group".
- Properties:** A panel on the right showing query details:
  - Description:** Billing Booking Backlog Customer
  - Technical Name:** YZ0MMBPS01\_Q0021
  - InfoProvider:** Z0MMBPS01
  - Key Date:** (empty field)
  - Use Standard Date
- Messages:** A panel at the bottom showing 14 messages for the current query:
  - Errors: Add a key figure to structure element 'YTD Invoice Value' in structure 'Key Figures'
  - Errors: Add a key figure to structure element 'PY YTD Invoice Value' in structure 'Key Figures'
  - Errors: Add a key figure to structure element 'PY Total Invoice Value' in structure 'Key Figures'
  - Errors: Add a key figure to structure element 'PZY Total Invoice Value' in structure 'Key Figures'
  - Errors: Add a key figure to structure element 'Backlog Value' in structure 'Key Figures'
  - Errors: The InfoObject 'ZLGMATPLN\_\_OVAL\_CLASS' included in 'ZLGMATPLN\_\_OVAL\_CLASS' is not in the InfoProvider
  - Errors: The InfoObject 'ZFYPDUMMY' included in 'ZFYPDUMMY' is not in the InfoProvider

**Please Note:** The program by default copies the same description for the new query from the source query and which can be later changed through query designer.

Remove the fields that are not present in the new info provider and Click on save. You can now use the new query to fetch data from the new infoprovider.

You can also through transaction Se93 and use this program as a Custom T-code.

## Disclaimer and Liability Notice

This document may discuss sample coding or other information that does not include SAP official interfaces and therefore is not supported by SAP. Changes made based on this information are not supported and can be overwritten during an upgrade.

SAP will not be held liable for any damages caused by using or misusing the information, code or methods suggested in this document, and anyone using these methods does so at his/her own risk.

SAP offers no guarantees and assumes no responsibility or liability of any type with respect to the content of this technical article or code sample, including any liability resulting from incompatibility between the content within this document and the materials and services offered by SAP. You agree that you will not hold, or seek to hold, SAP responsible or liable with respect to the content of this document.