



**How To Guide  
SAP NetWeaver 04s**

# **How To... Convert Local CAF DC into NWDI DCs**

**Version 1.00 – January 2006**

**Applicable Releases:  
SAP NetWeaver '04s**

**Abdul Razack**

© Copyright 2004 SAP AG. All rights reserved.

No part of this publication may be reproduced or transmitted in any form or for any purpose without the express permission of SAP AG. The information contained herein may be changed without prior notice.

Some software products marketed by SAP AG and its distributors contain proprietary software components of other software vendors.

Microsoft, Windows, Outlook, and PowerPoint are registered trademarks of Microsoft Corporation.

IBM, DB2, DB2 Universal Database, OS/2, Parallel Sysplex, MVS/ESA, AIX, S/390, AS/400, OS/390, OS/400, iSeries, pSeries, xSeries, zSeries, z/OS, AFP, Intelligent Miner, WebSphere, Netfinity, Tivoli, and Informix are trademarks or registered trademarks of IBM Corporation in the United States and/or other countries.

Oracle is a registered trademark of Oracle Corporation.

UNIX, X/Open, OSF/1, and Motif are registered trademarks of the Open Group.

Citrix, ICA, Program Neighborhood, MetaFrame, WinFrame, VideoFrame, and MultiWin are trademarks or registered trademarks of Citrix Systems, Inc.

HTML, XML, XHTML and W3C are trademarks or registered trademarks of W3C<sup>®</sup>, World Wide Web Consortium, Massachusetts Institute of Technology.

Java is a registered trademark of Sun Microsystems, Inc.

JavaScript is a registered trademark of Sun Microsystems, Inc., used under license for technology invented and implemented by Netscape.

MaxDB is a trademark of MySQL AB, Sweden.

SAP, R/3, mySAP, mySAP.com, xApps, xApp, SAP NetWeaver, and other SAP products and services mentioned herein as well as their respective logos are trademarks or registered trademarks of SAP AG in Germany and in several other countries all over the world. All other product and service names mentioned are the trademarks of their respective companies. Data

contained in this document serves informational purposes only. National product specifications may vary.

These materials are subject to change without notice. These materials are provided by SAP AG and its affiliated companies ("SAP Group") for informational purposes only, without representation or warranty of any kind, and SAP Group shall not be liable for errors or omissions with respect to the materials. The only warranties for SAP Group products and services are those that are set forth in the express warranty statements accompanying such products and services, if any. Nothing herein should be construed as constituting an additional warranty.

These materials are provided "as is" without a warranty of any kind, either express or implied, including but not limited to, the implied warranties of merchantability, fitness for a particular purpose, or non-infringement. SAP shall not be liable for damages of any kind including without limitation direct, special, indirect, or consequential damages that may result from the use of these materials.

SAP does not warrant the accuracy or completeness of the information, text, graphics, links or other items contained within these materials. SAP has no control over the information that you may access through the use of hot links contained in these materials and does not endorse your use of third party web pages nor provide any warranty whatsoever relating to third party web pages.

SAP NetWeaver "How-to" Guides are intended to simplify the product implementation. While specific product features and procedures typically are explained in a practical business context, it is not implied that those features and procedures are the only approach in solving a specific business problem using SAP NetWeaver. Should you wish to receive additional information, clarification or support, please refer to SAP Consulting.

Any software coding and/or code lines / strings ("Code") included in this documentation are only examples and are not intended to be used in a productive system environment. The Code is only intended better explain and visualize the syntax and phrasing rules of certain coding. SAP does not warrant the correctness and completeness of the Code given herein, and SAP shall not be liable for errors or damages caused by the usage of the Code, except if such damages were caused by SAP intentionally or grossly negligent.

# 1 Business Scenario

This guide will walk you through migrating Local Development CAF components into NWDI DCs and check them into NWDI server

## 2 Requirements and Dependencies

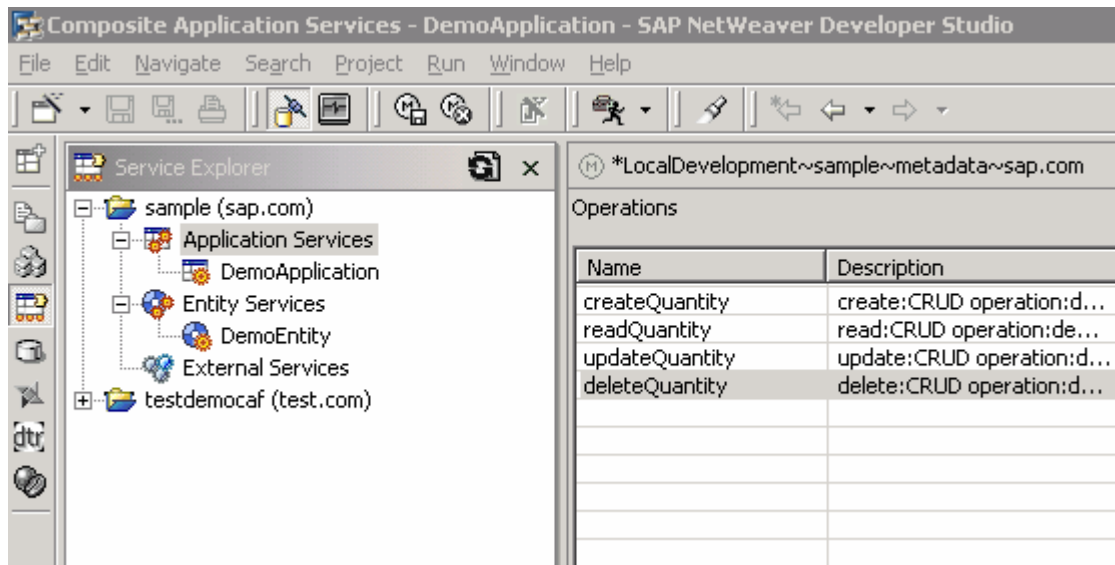
Before you start with this tutorial you should have installed the following Software:

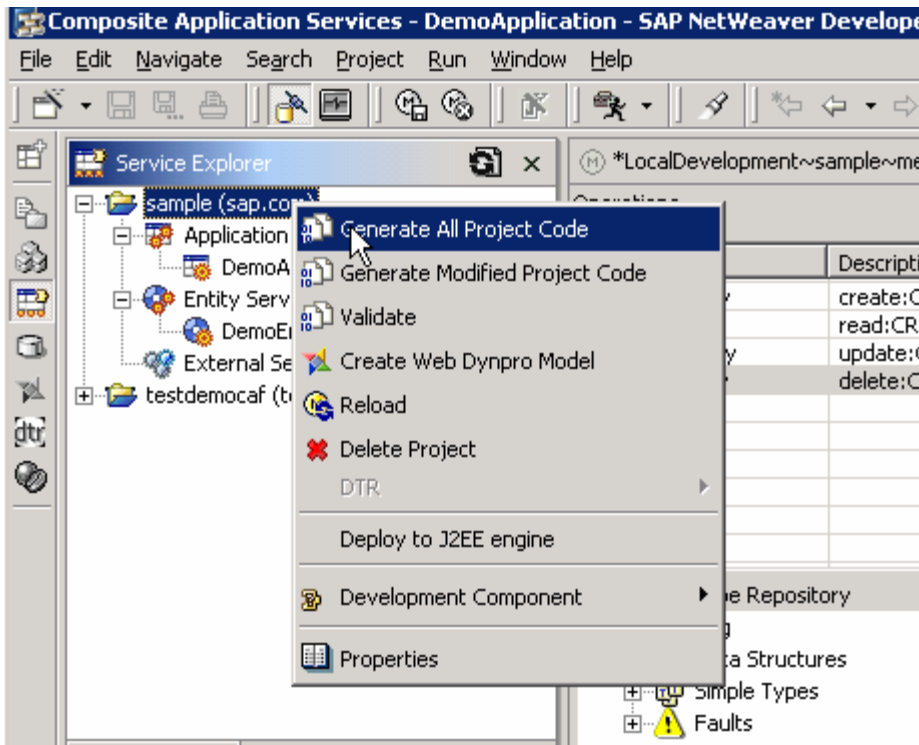
- SAP Application Server Java NW 04s sp05
- Installed and configured NWDI
- Created a Track for developing CAF components.

## 3 Migration process

### 3.1 Prepare the Local Development component

For this example we will convert a local development component which has an entity service and an application service. It also has a couple of custom simple types created in its dictionary project.

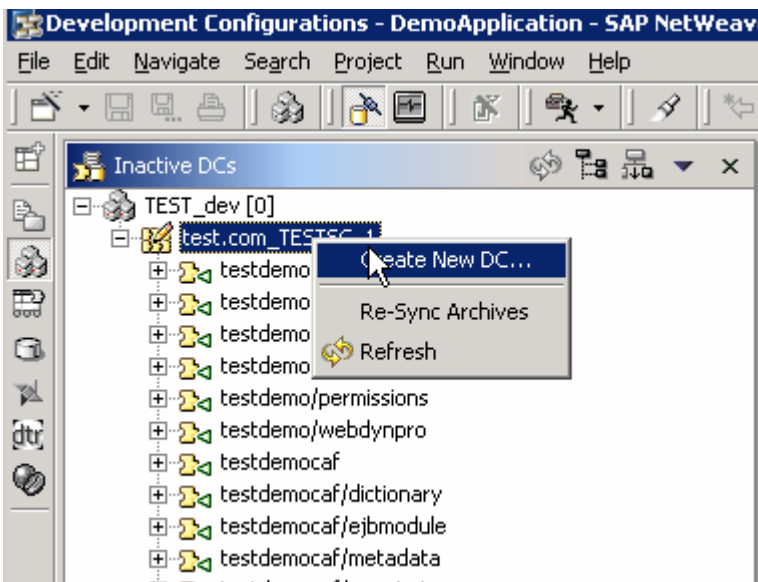




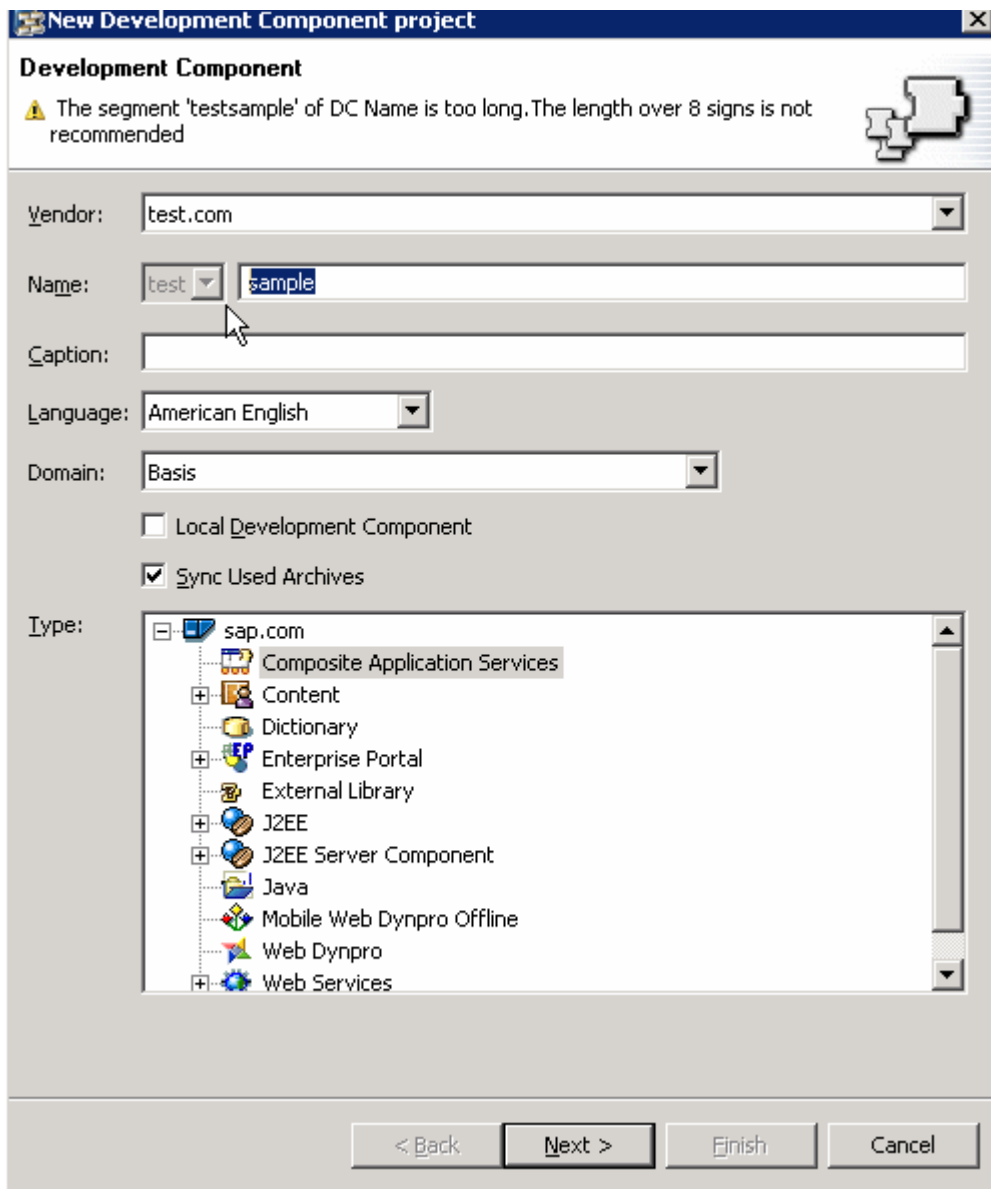
Right click on the project node and click on Generate Project Code so that the corresponding dictionary, ejb, metadata etc projects are created. Then click on save meta data.

### 3.2 Creating DCs in NWDI

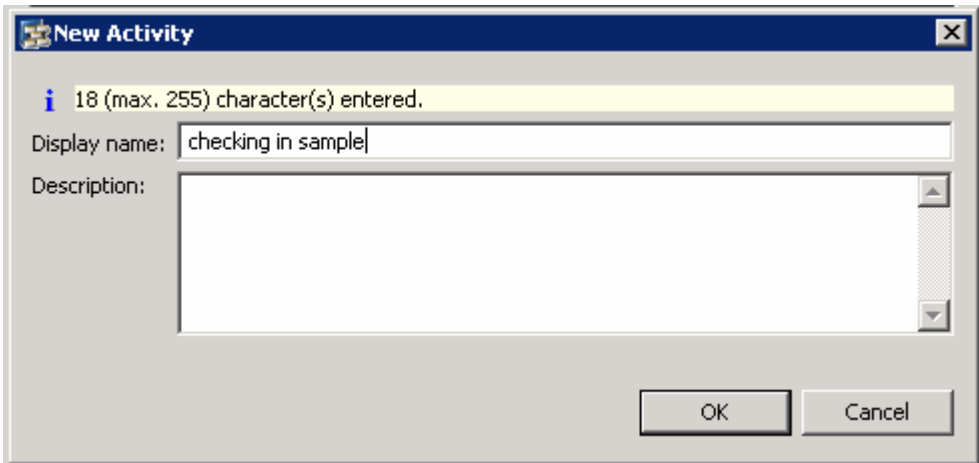
Open the development configurations perspective and login into NWDI.



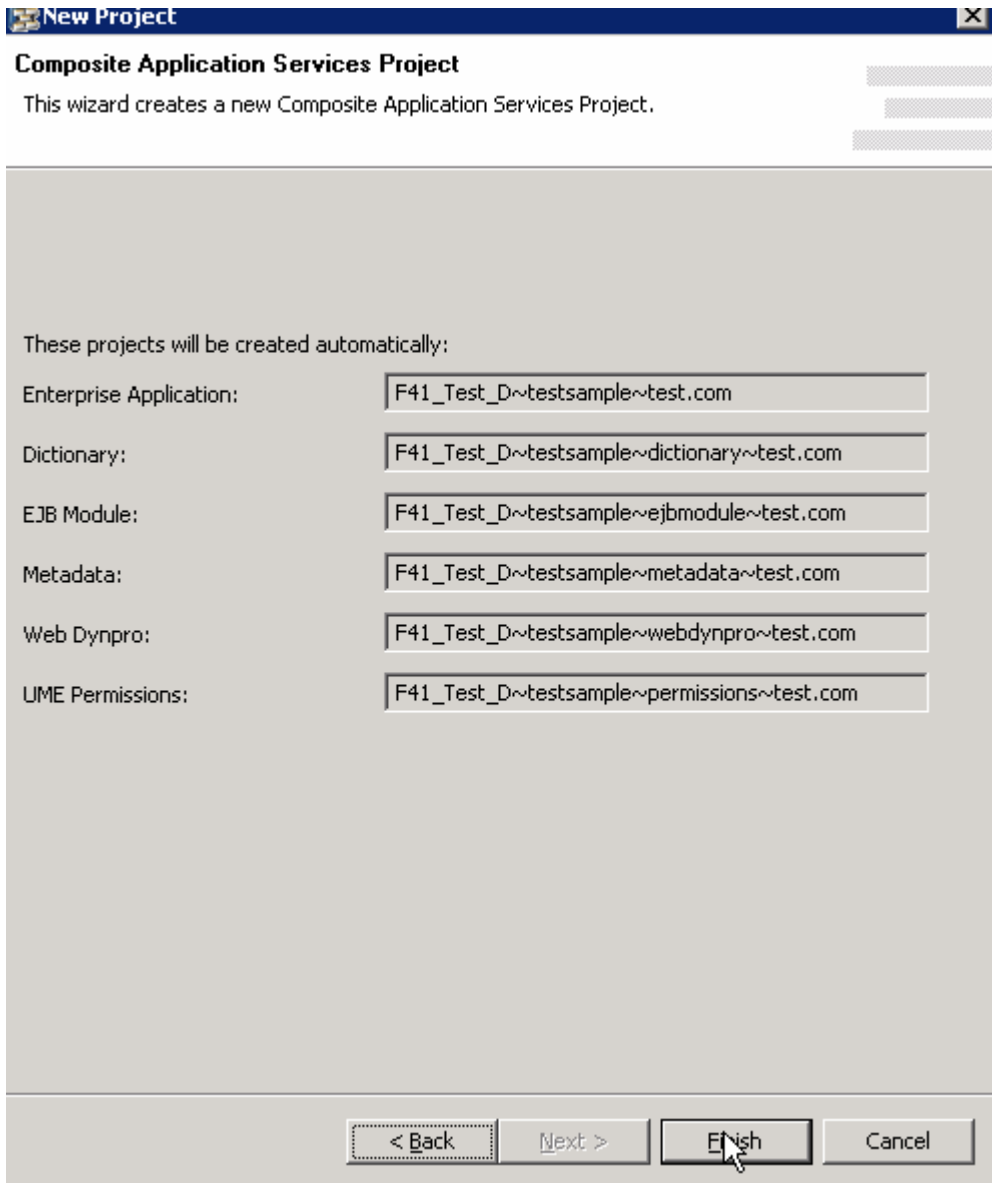
From the track that was created for you click on Create New DC from the context menu



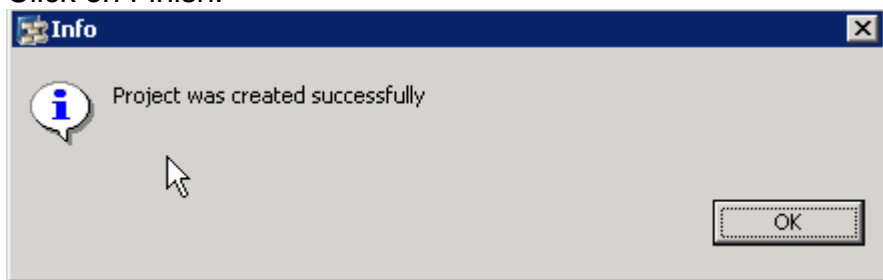
Enter the name of your DC and choose Composite Application Services as the DC type. Also notice that here there is a DC name prefix (test)



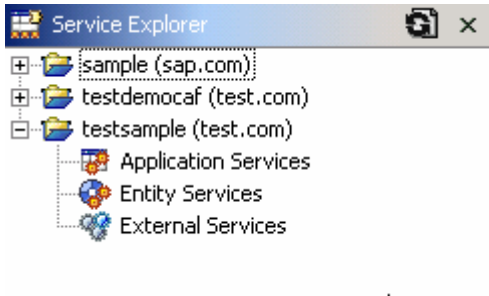
Provide a name for your activity and click ok



Click on Finish.

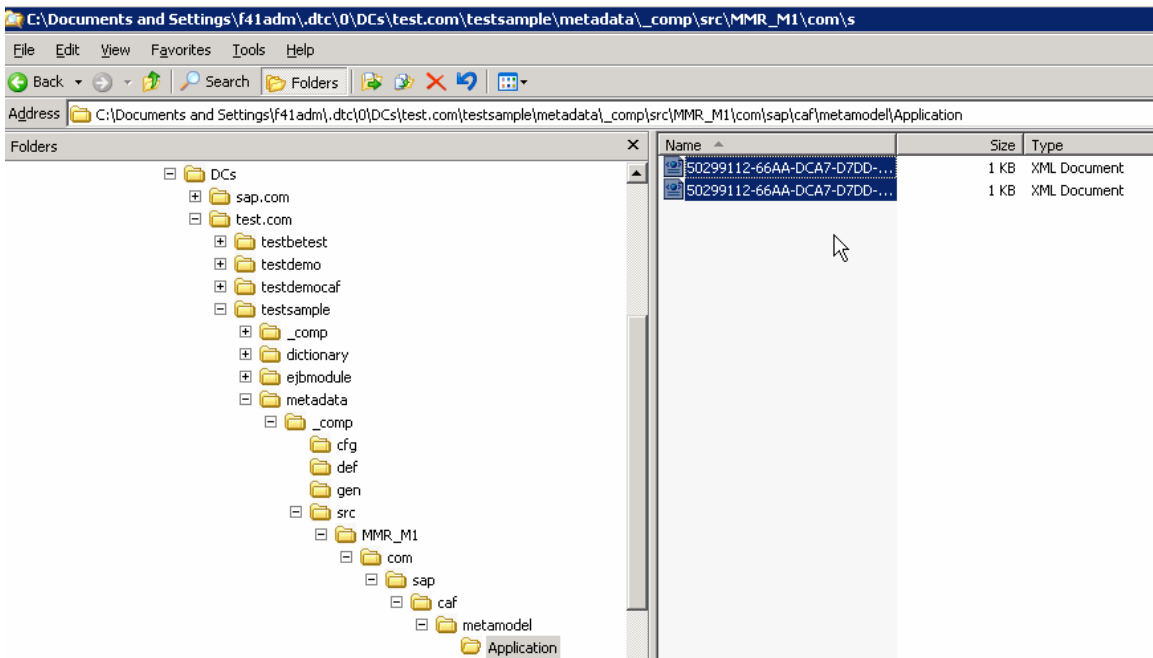


After a couple of mins you will get a message as shown above.



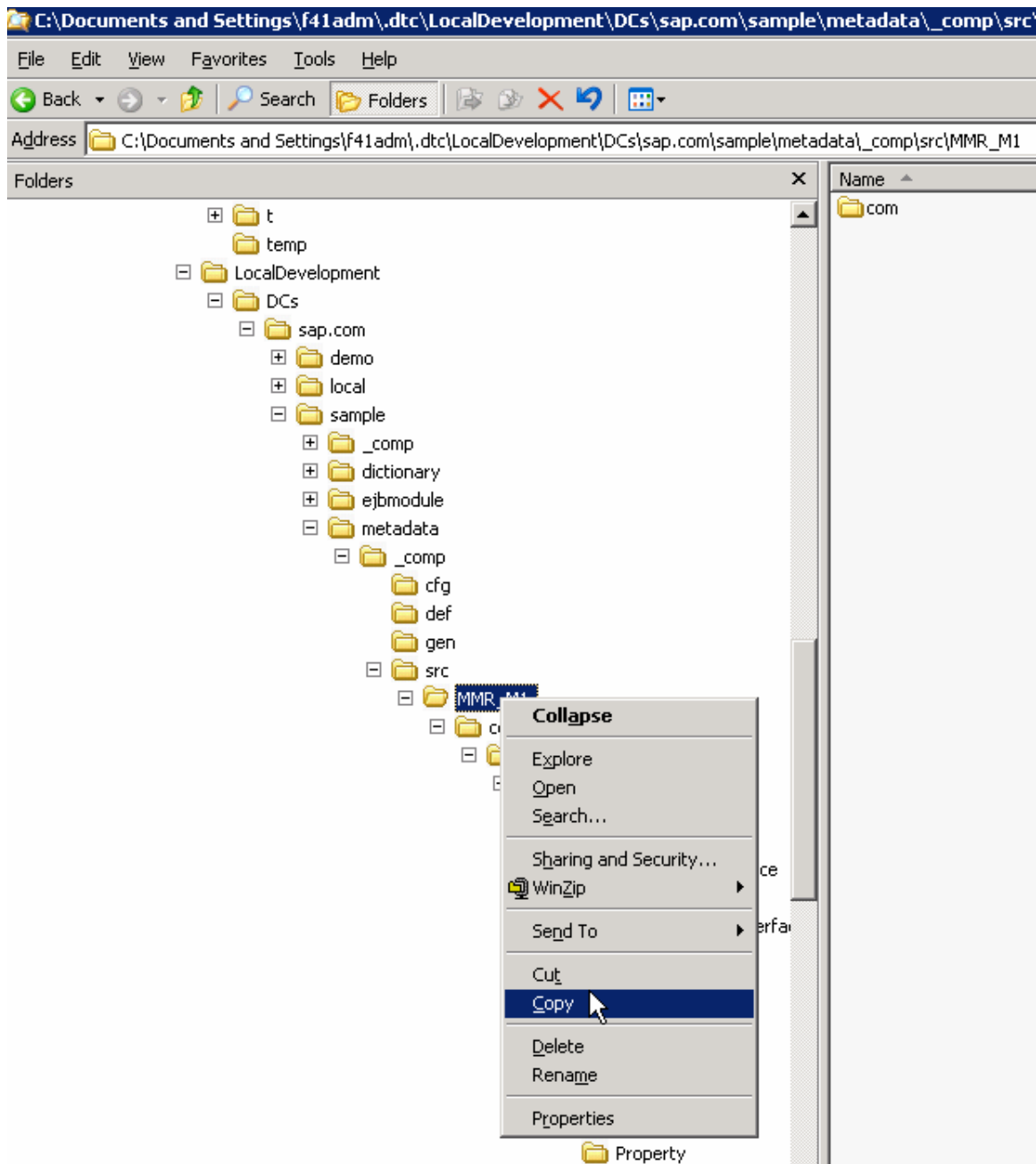
An empty project is created as shown above in the CAF perspective.

Now we will be modifying some files on the local file system. So close the NetWeaver Developer Studio.



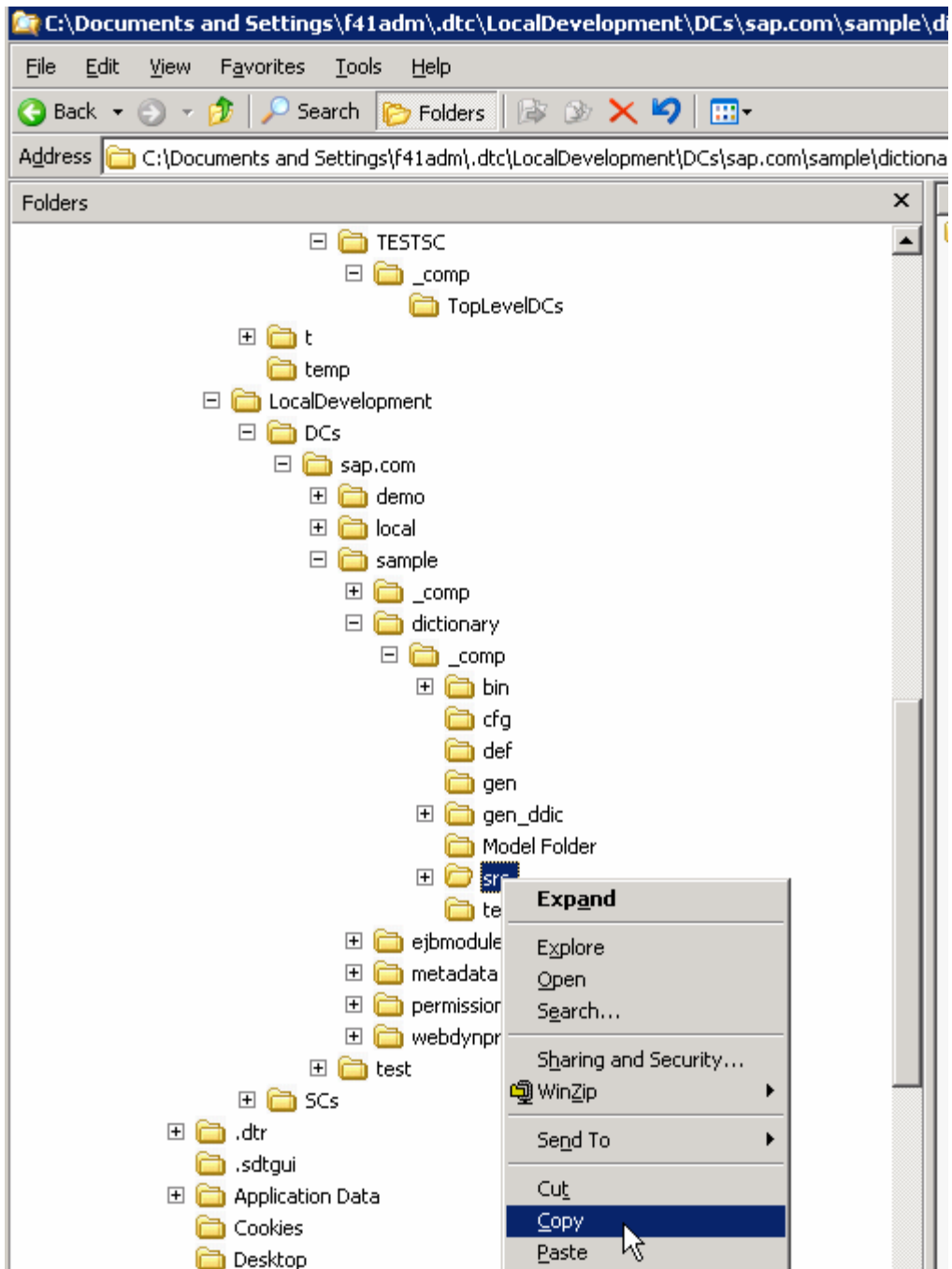
From windows explorer browse to the directory c:\documents and settings\





Copy the MMR\_M1 directory from your local development directory (c:\documents and settings\\.dtt\LocalDevelopment\DCs\sap.com\sample\metadata\\_comp\src directory and copy it into the

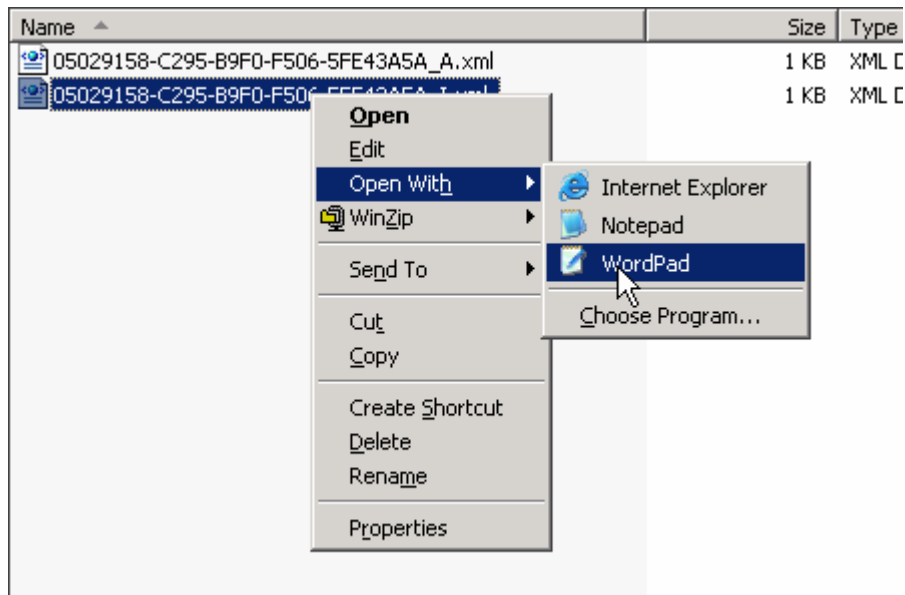
c:\documents and settings\\.dtt\0\DCs\\testsample\metadata\\_comp\src directory



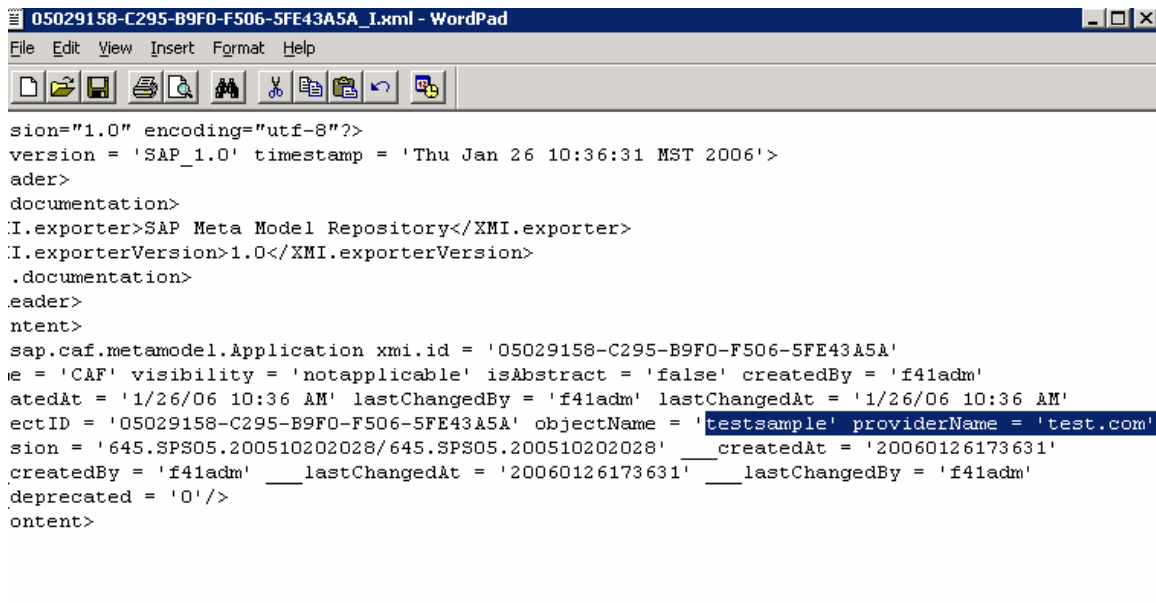
Also copy the folder c:\document and settings\

C:\documents and settings\

Browse to the c:\documents and settings\



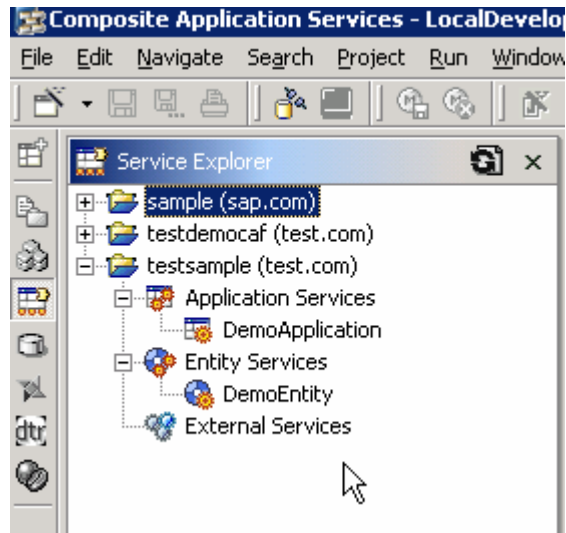
Open the xml file that ends with \_I.xml in wordpad



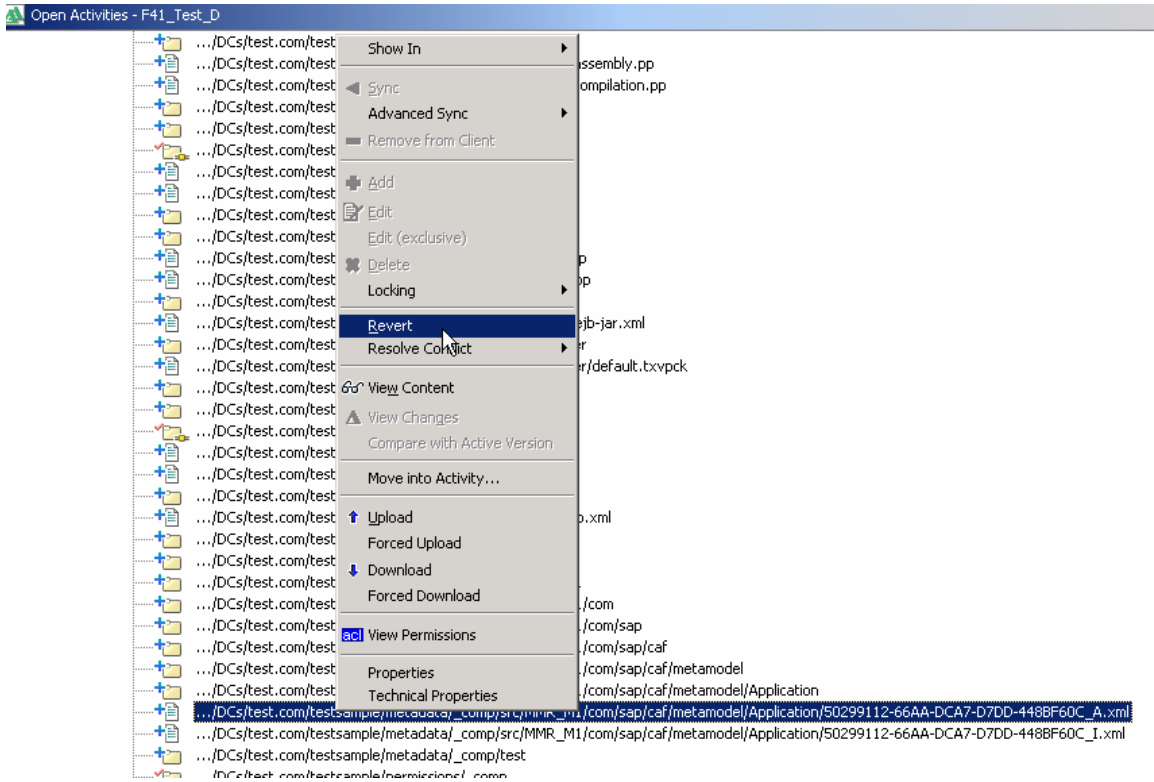
Change the provider name to the vendor name you choose in NWDI and also add the prefix to the object name (in this example the component name was sample and the prefix was test. Hence the objectname is testsample). Save this file.

### 3.3 Checking into NWDI

Launch the Developer Studio. In the CAF perspective you will notice that your project now has the entity and application service in it.



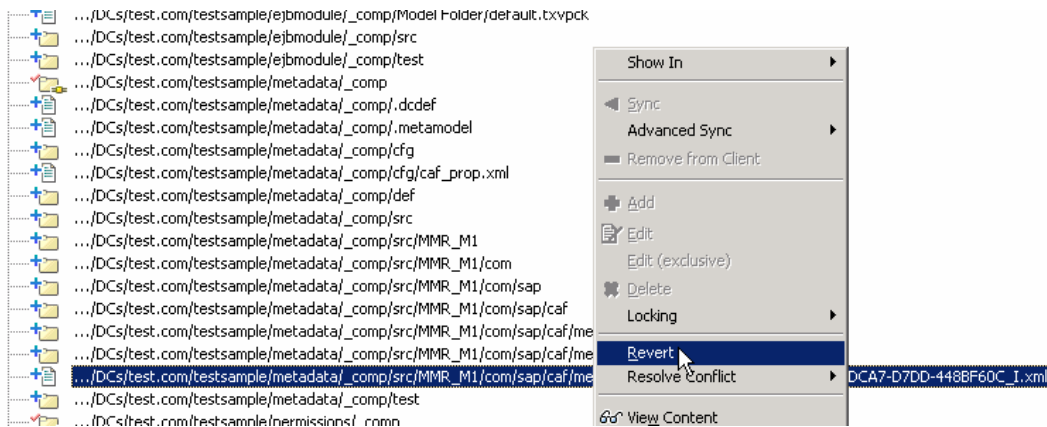
Next step is to check in all the changes we made into NWDI. Open the development configurations perspective and login to NWDI. Double click on the right hand pane named open activities.



Scroll down and find the entry

..DCs/test.com/testsample/metadata/\_comp/src/MMR\_M1/com/sap/caf/metamodel/  
/Application/xxxxxxxxxxxxxxxx.xml

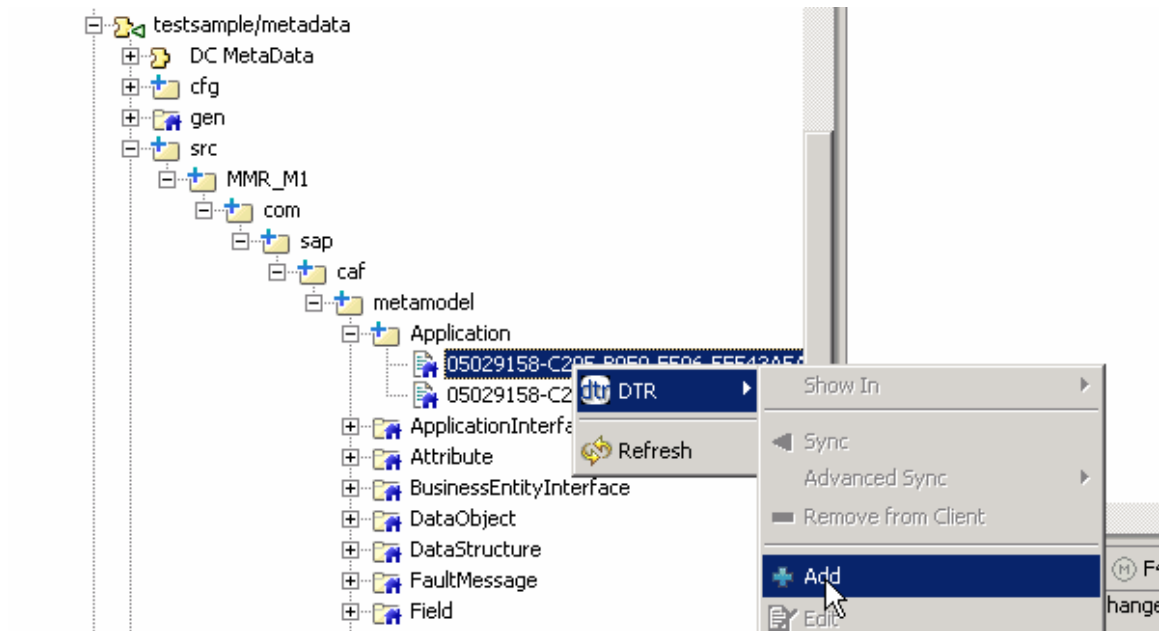
From the context menu click on revert



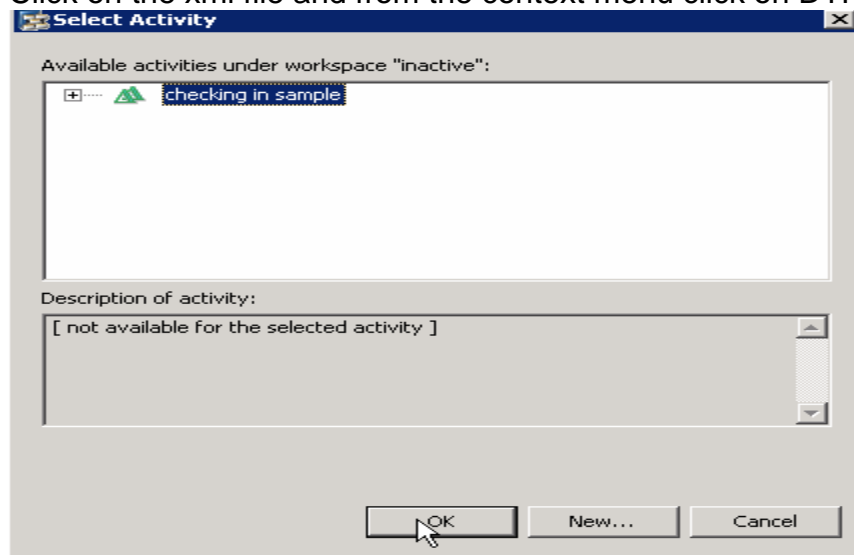
Repeat the step for the second xml as well

(This step is necessary because we deleted these two files from our local file system and DTR is not aware of it)

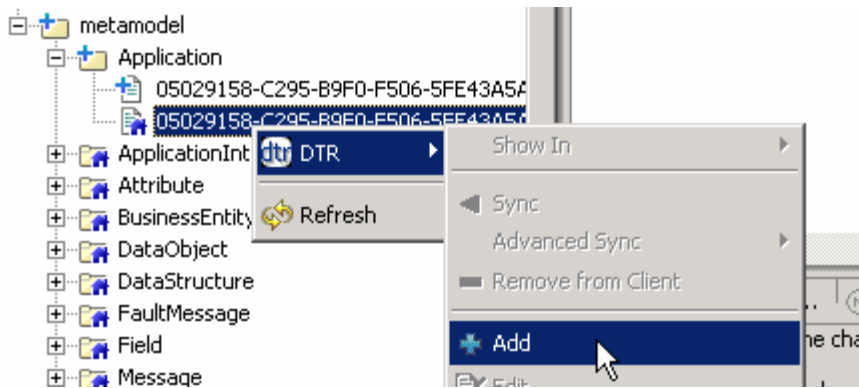
Double click on the Open Activities pane so that it returns to the normal development configuration perspective. From the left pane (Inactive DCs perspective) drill down to your development component as shown below



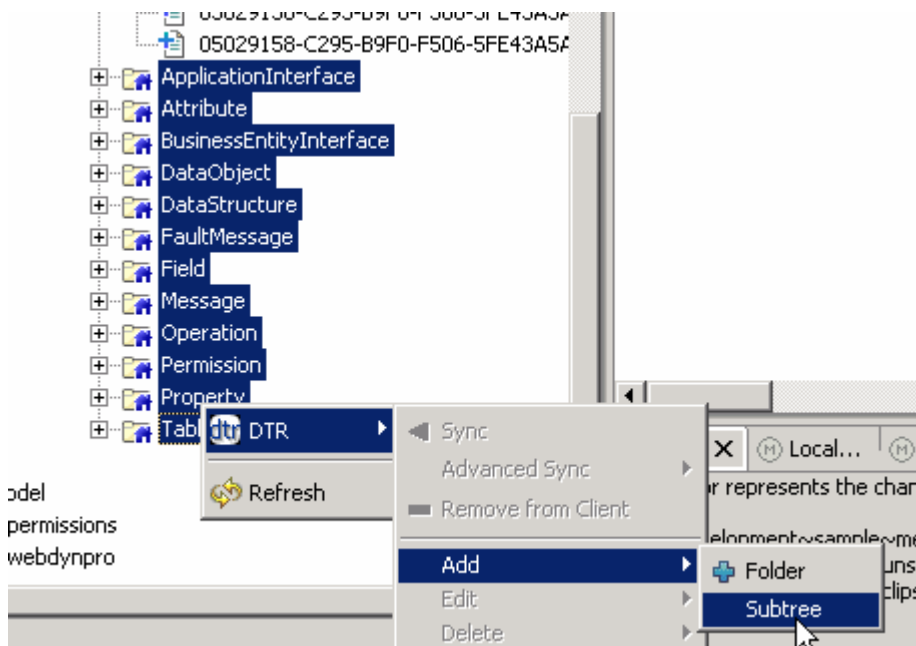
Click on the xml file and from the context menu click on DTR Add



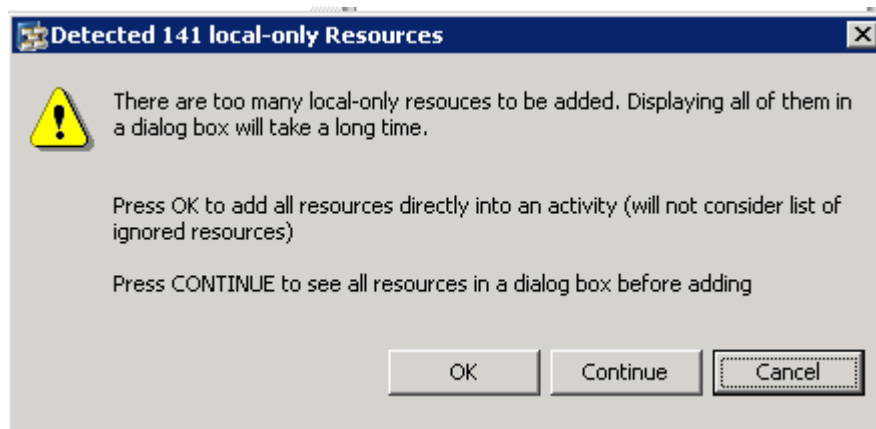
When prompted for an activity choose the activity that you created earlier and click ok.



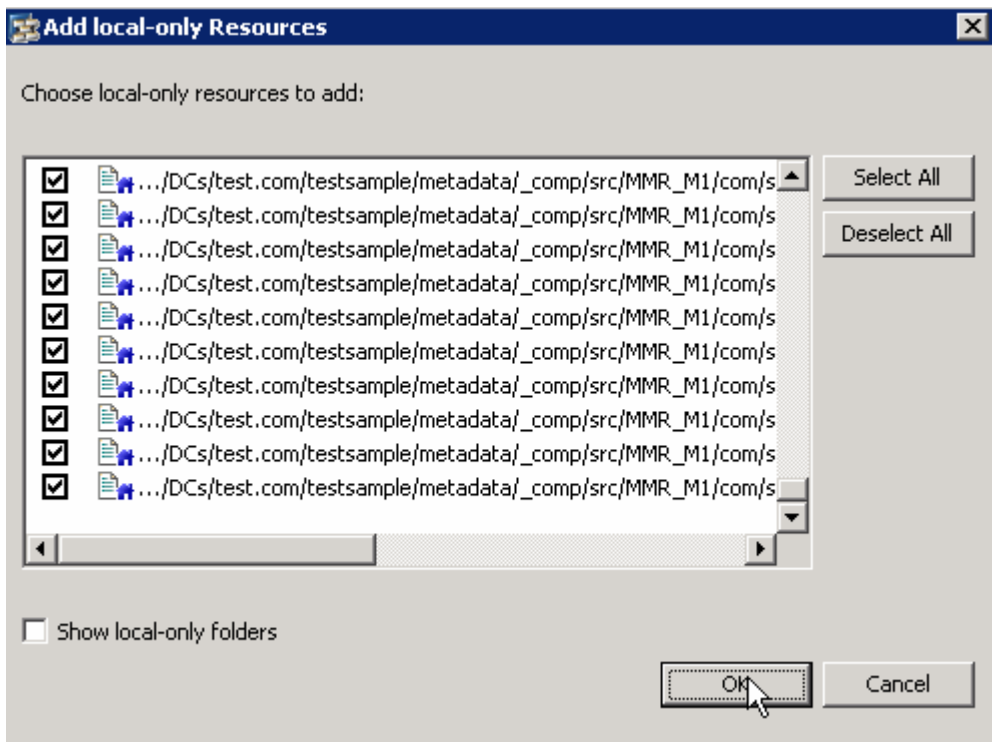
Repeat the above steps for the second xml file as well.



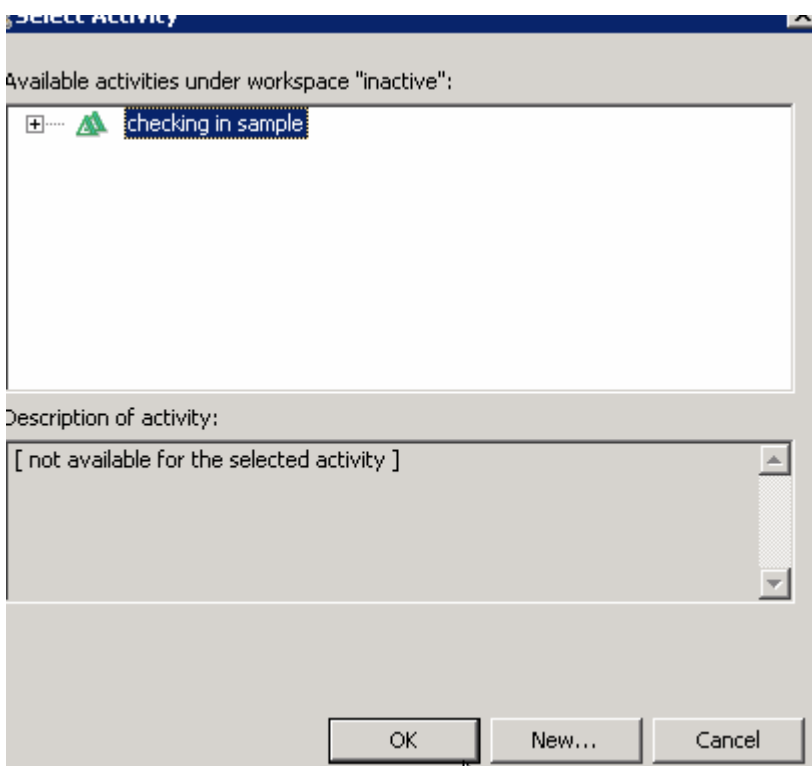
Also choose all the subfolders. From the context menu choose DTR/ADD/Subtree



In the resultant message box, Choose Continue.

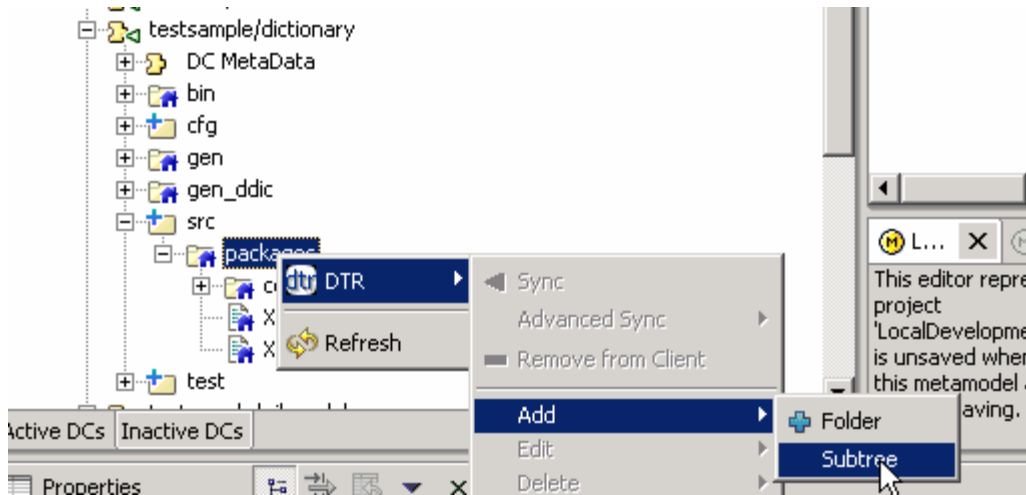


Click on OK

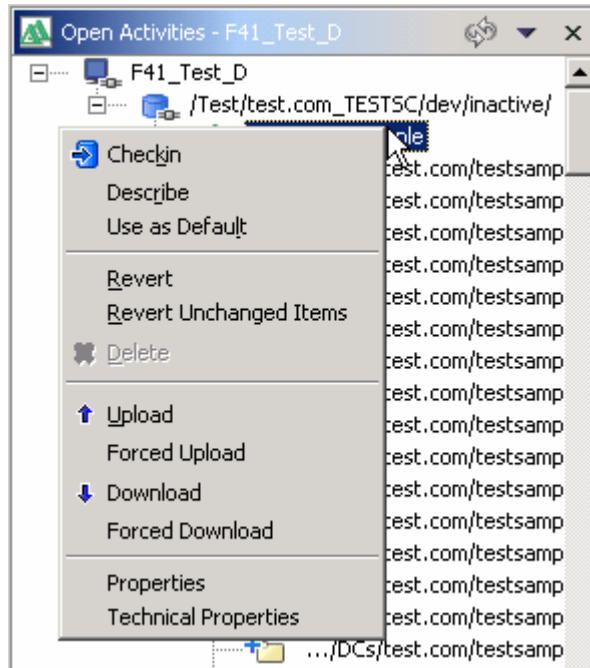


When prompted for an activity choose the activity that you had created earlier.

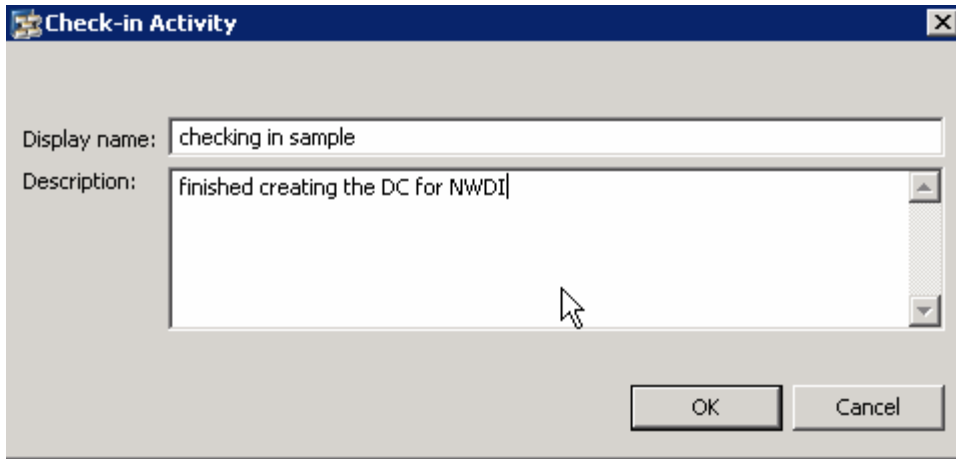




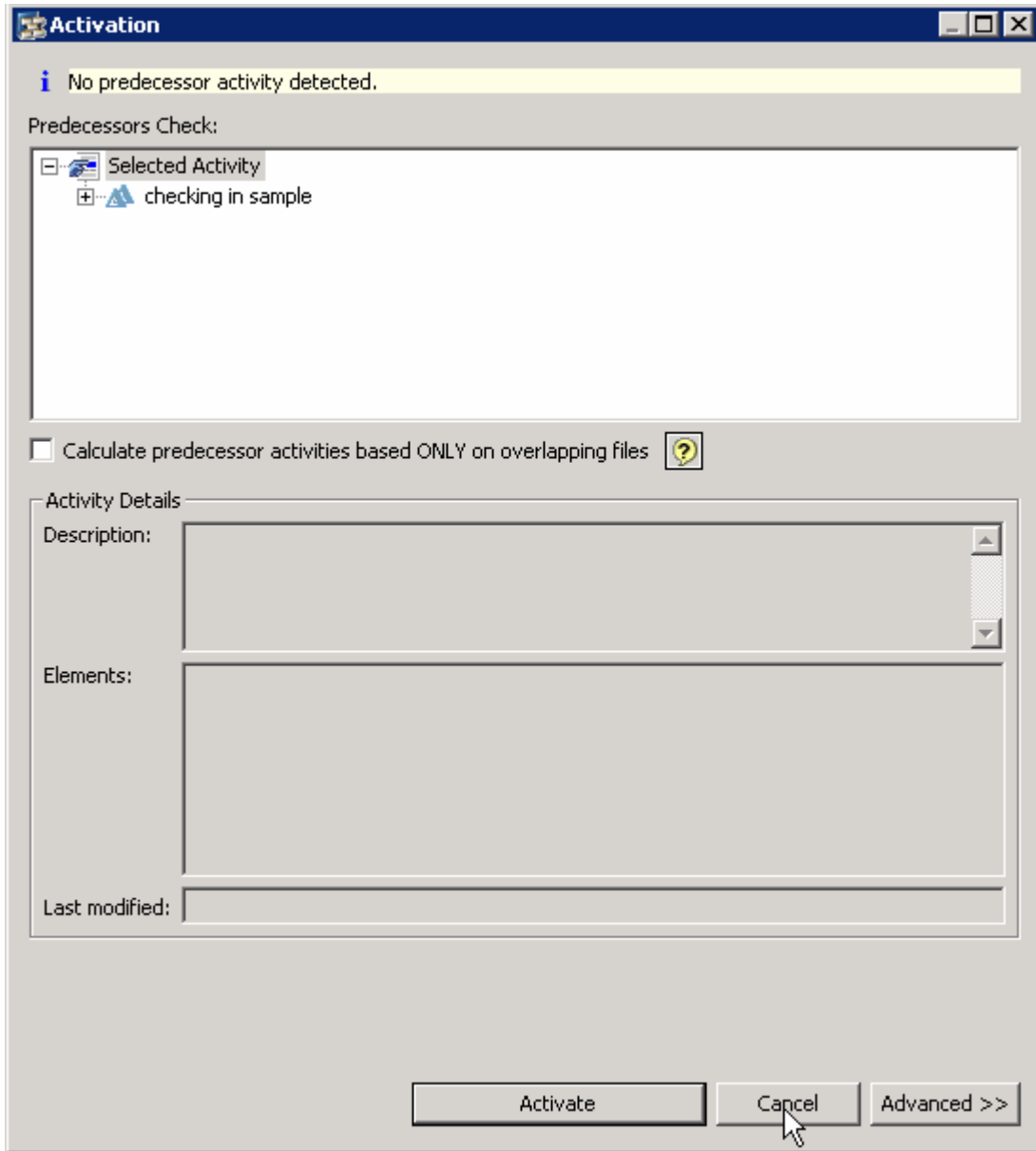
Repeat the steps for the node testsample/dictionary as well. Now we are ready to check all our changes into NWDI.



From the Open Activities pane choose your activity and click Checkin from the context menu.



Provide a description for the activity.



You can choose to activate but in this example I chose cancel since I just wanted it in the inactive space. You have successfully migrated the Local Development component and checked it into NWDI