

用 Data Service 向 BW 中加载数据

用 Data Service 向 BW 中加载数据究竟简化了哪些步骤？

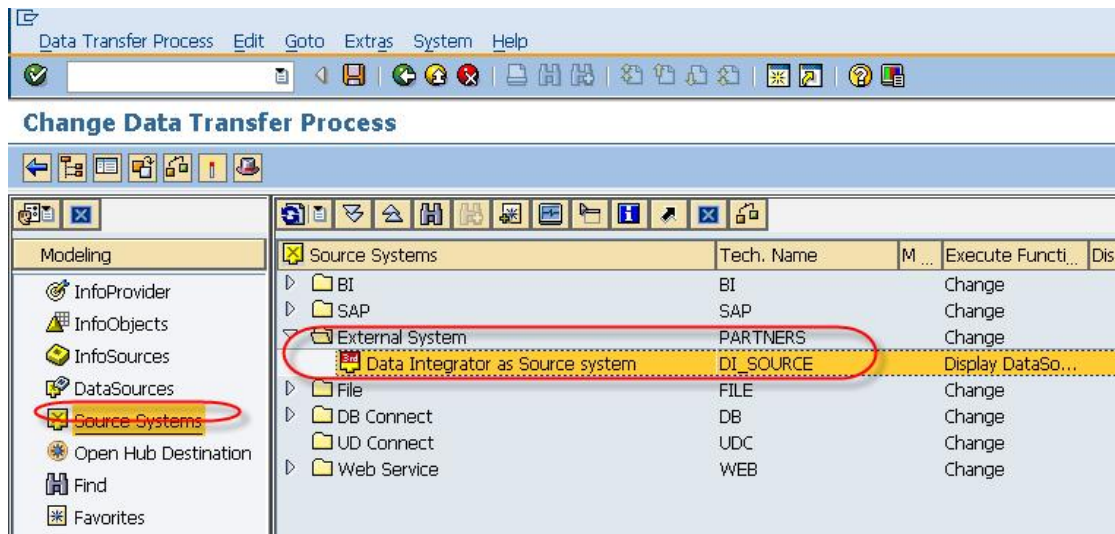
实际上只简化了 Transformation 的设计过程！！

而且，闹心的是，向 BW 中加载数据的 DI 的 Job 不能向其他正常 Job（以关系数据库为目标的 Job）一样在 DI 中直接运行，而是需要在 BW 中调用执行！

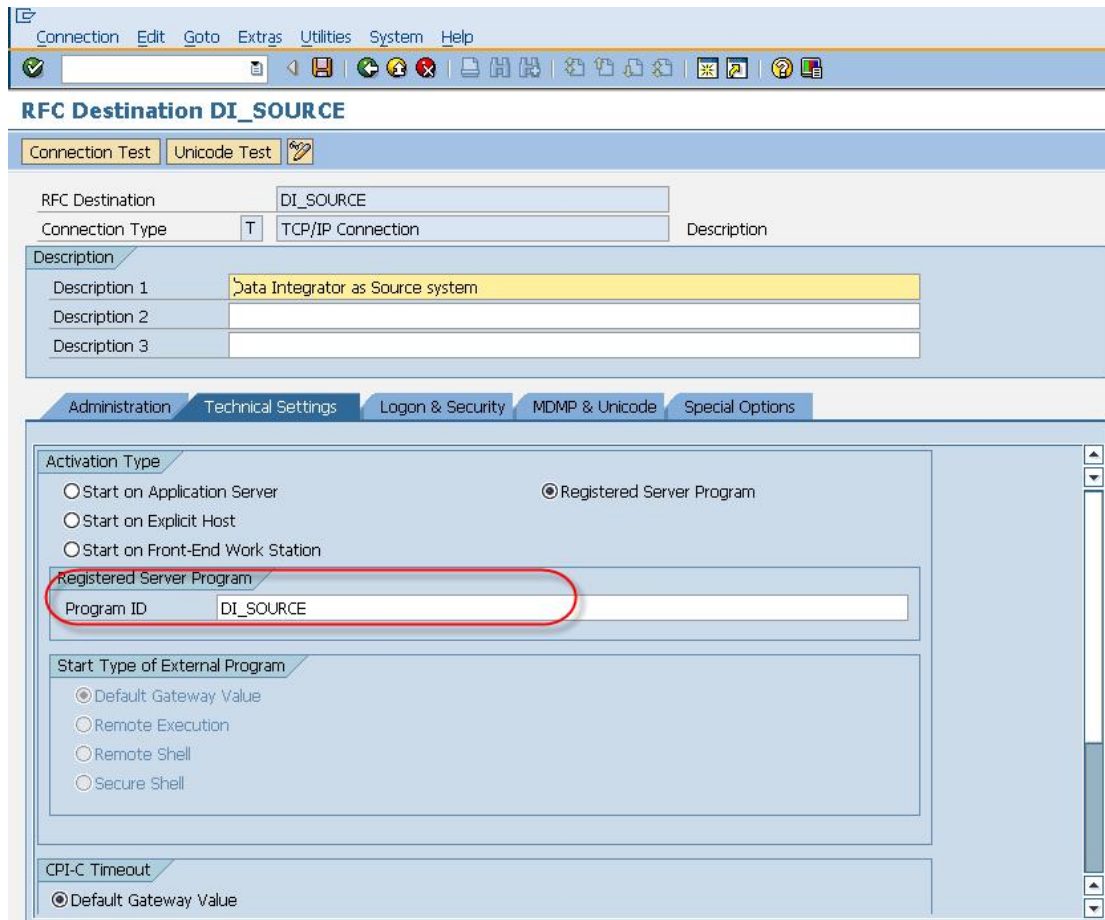
大的步骤如下：

- 1) 建立 BW 与 Data Service 的通信。
- 2) 在 Data Service 中运行 RFC Server。
- 3) 在 BW 中创建 InfoSource 供 Data Service 使用。
- 4) 在 Data Service Designer 中创建数据加载的 Job
- 5) 在 BW 中调用该 Job

建立 BW 与 Data Service 的通信画面如下：



在 Source System 中创建一个 External System，用来与 Data Service 通信。
该 System 配置画面如下：



注意：Program ID 是区分大小写的！

在 Data Service 中运行 RFC Server。

如果是 Data Service 3.2，可以在 Management Console 的 Administration 中“SAP Connection”直接配置。但如果是 DS3.1 或以前版本，则需要运行如下命令：

```
C:\WINDOWS\system32\cmd.exe - rfcsvr -aDI_SOURCE -g/H/svbtcd20.sin.sap.corp/S/3340 -xsapgw50
C:\Program Files\Business Objects\BusinessObjects Data Services\bin>
C:\Program Files\Business Objects\BusinessObjects Data Services\bin>rfcsvr -aDI_
SOURCE -g/H/ -xsapgw50
RFC Error: <BODI-300351>
Key: <BODI-300353>RFC_I05
Status: <BODI-300354>CODE=CM_PRODUCT_SPECIFIC_ERROR STATUS=??? DATA=??? ID=???
Message: <BODI-300355>Connect to SAP gateway failed
Connect_PM TPNAME=DI_SOURCE, GWHOST=/H/, GWSERU=3350

LOCATION      CPIC (TCP/IP) on local host PEKN50078048A
ERROR       partner 'PEKN50078048A:3350' not reached
TIME        Thu Dec 31 21:22:12 200
RELEASE     710
COMPONENT
Logged out of SAP; trying to log back in... <BODI-300361>
^C
C:\Program Files\Business Objects\BusinessObjects Data Services\bin>
C:\Program Files\Business Objects\BusinessObjects Data Services\bin>rfcsvr -aDI_
SOURCE -g/H/svbtcd20.sin.sap.corp/S/3340 -xsapgw50
```

-a 是 Program ID, -g 是 Router String, -x 是网关。
该配置与 SAP Bw 系统连接参数关系对应如下图:

系统条目属性

连接 网络 代码页

选择连接类型并按要求更改系统参数。如果您想让系统建议描述，则删除旧描述。输入所有必需的数据后，按钮“确定(O)”方才激活。

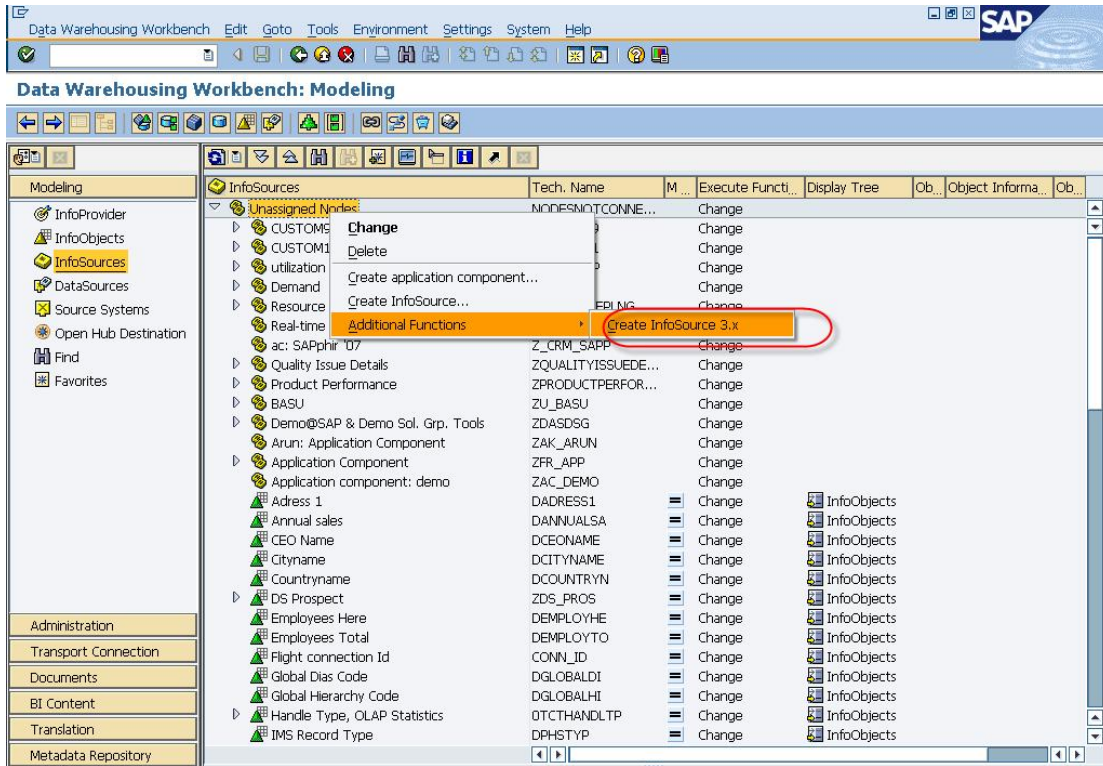
连接类型： 自定义应用程序服务器

系统连接参数

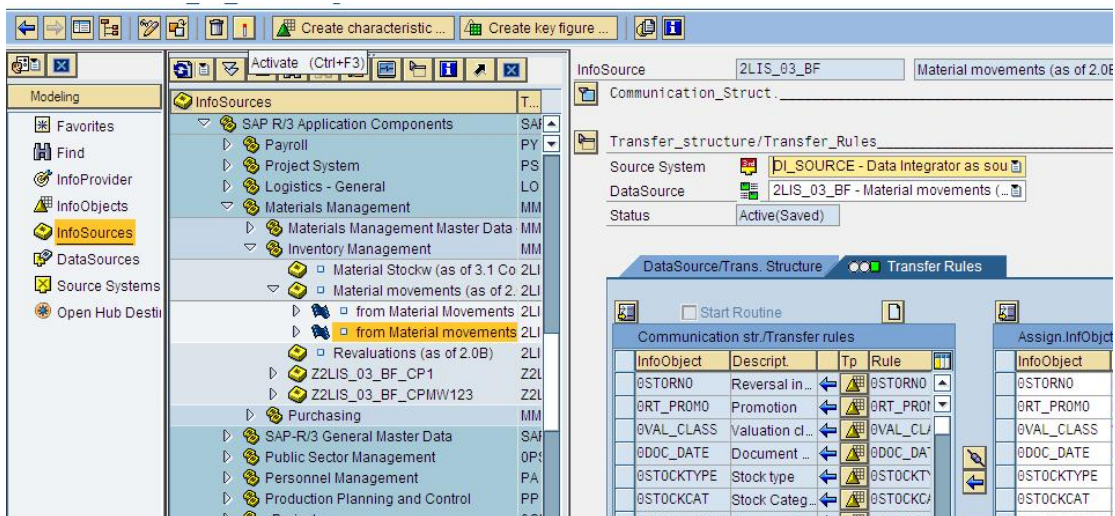
描述：	SVB
应用程序服务器：	svbtcd20.sin.sap.corp
系统编号：	40
系统标识：	SVB
SAProuter 字符串：	

确定(O) 取消(C) 帮助(H)

在 BW 中创建用于 Data Service 使用的 Info Source。



注意：只能创建 3.x 版本的 InfoSource 才有 Transfer Rules!



在 DS 中创建用于数据加载的 Job。

主要是建立于 SAP BW 系统的连接，导入目标源数据，而 Job 的设计过程与普通 Job 没区别。

建立连接 SAP BW 的 DataStore 如下图：

Edit Datastore sap_BW_target

Datastore name:

Datastore type:

R/3 application server:

User name:

Password:

Advanced <<

	Configuration1
Locale	
R/3 language	E - English
Code page	<default>
SAP	
R/3 client	800
R/3 system number	40
Routing String	/H/

Configurations: 1

BusinessObjects Data Services Designer - [sap_BW_target - Datastore Explorer]

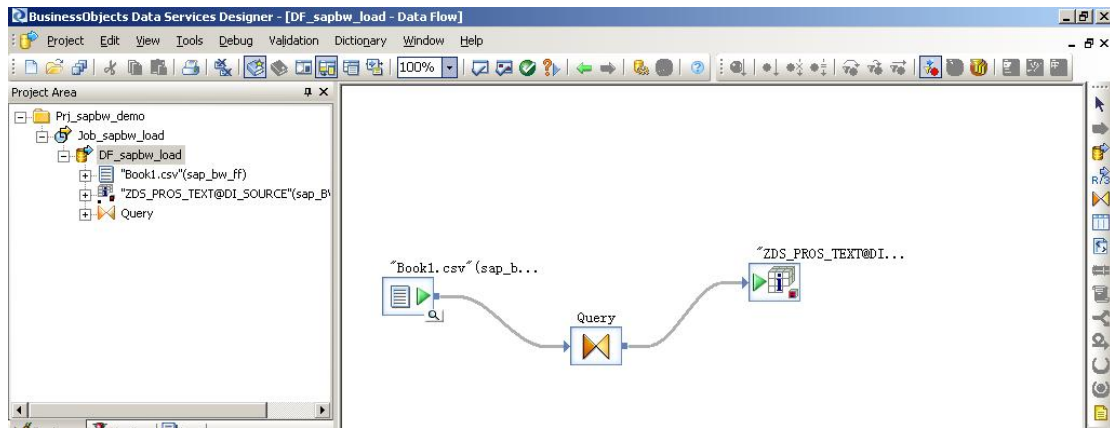
Project Edit View Tools Debug Dictionary Window Help

Project Area

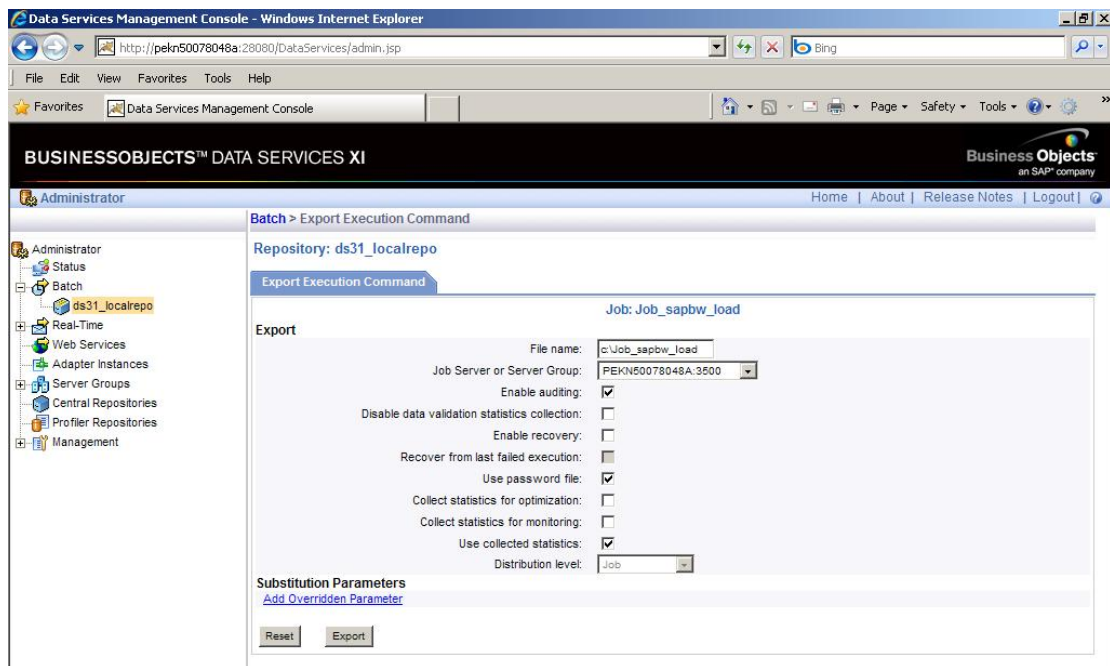
- ZDIST
 - ZDS_PROS
 - DI_SOURCE
 - ZDS_PROS_t
 - ZENGMR
 - ZENGMNT
 - ZENGPRTNR
 - ZGL_ACCT

Description

- Distributor
- DS Prospect
- Data Integrator as Source system
- TEXT
- Engagement Manager
- Engagement
- Engagement Partner
- Local Account



在 Management Console 中将 Job 执行命令导出：



在 BW 中执行 DS Job:

Data Warehousing Workbench: Modeling

The screenshot displays the SAP Data Warehousing Workbench Modeling interface. On the left, a navigation pane shows the 'Modeling' section with 'InfoSources' selected. The main area shows a tree view of InfoSources, with 'DS Prospect (Texts)' selected. A context menu is open over 'DS Prospect (Texts)', listing various actions such as 'Display', 'Copy...', 'Delete', 'Manage', 'Create Transformation...', 'Create Data Transfer Process...', 'Create InfoPackage...', 'Create Transfer Rules', and 'Migrate'.

InfoSource	Tech. Name	M...	Execute Fur
Resource Planning	ZRESOURCEPLNG		Change
Real-time Data Acquisition	ZPM_BIM300_3		Change
ac: SAPphir '07	Z_CRM_SAPP		Change
Quality Issue Details	ZQUALITYISSUEDE...		Change
Product Performance	ZPRODUCTPERFOR...		Change
BASU	ZU_BASU		Change
Demo@SAP & Demo Sol. Grp. Tools	ZDASDSG		Change
Arun: Application Component	ZAK_ARUN		Change
Application Component	ZFR_APP		Change
Application component: demo	ZAC_DEMO		Change
Adress 1	DADDRESS1	=	Change
Annual sales	DANNUALSA	=	Change
CEO Name	DCEONAME	=	Change
Cityname	DCITYNAME	=	Change
Countryname	DCOUNTRYN	=	Change
DS Prospect	ZDS_PROS	=	Change
DS Prospect (Texts)	TEXTS ZDS_PROS		Manage
from DS Prospect (Texts) for Da	ZDS_PROS_TEXT ...		Change
DS Prospect (Texts)	ZDS_PROS_TEXT		Change
ZDS_PROS...			Schedule
Employees Here			Change
Employees Total			Change
Flight connection Id			Change
Global Dias Code			Change
Global Hierarchy Code			Change
Handle Type, OLAP Statis			Change
IMS Record Type			Change
Leagal Status			Change

Scheduler (Maintain InfoPackage)

Process Chain Maint.

Modeling

- InfoProvider
- InfoObjects
- InfoSources**
- DataSources
- Source Systems
- Open Hub Destination
- Find
- Favorites

Administration

Transport Connection

Documents

InfoPackage: ZDS_PROS_TEXT_FULL(ZPAK_D76ZW8XS6ZP5694ZO380ZMHQ7)

DataSource: DS Prospect (Texts)(ZDS_PROS_TEXT)

Data Type: Texts

Source System: Data Integrator as Source system(DI_SOURCE)

Last Changed By: I052048 Date: 31.12.2009 Time: 15:14:59

Data Selection
3rd Party Selections
Processing
Update
Schedule

Name	Input Value	Mn.	Data	Length
Executable	C:\tmp\job_sapbw_load.bat	X	CHAR	44

Check

InfoPackage: ZDS_PROS_TEXT_FULL(ZPAK_D76ZW8XS6ZP5694ZO380ZMHQ7)

DataSource: DS Prospect (Texts)(ZDS_PROS_TEXT)

Data Type: Texts

Source System: Data Integrator as Source system(DI_SOURCE)

Last Changed By: I052048 Date: 31.12.2009 Time: 15:14:59

Data Selection
3rd Party Selections
Processing
Update
Schedule

Start Data Load Immediately
 Start Later in Background

Scheduling Options

Job Name Prefix/Suffix: BI_BTCH

Gantt Diagram (Plan,Table)
Subsequent Process.

Request Batch Process Runs Until All Data Has Been Updated in BW

Start
Job(s)