

Accrual Interface Using PI in Bank Analyzer



Applies to:

This applies to SAP – Bank Analyzer version 6.0 .

For more information, visit the [Business Process Expert homepage](#).

Summary

Bank Analyzer Facilitates uploading of documents from external systems. The upload can be done using the csv file or the PI interface. There are many services that are available for different type of loads for example RBD, accruals etc. In this paper the accruals interface is discussed.

Author: Surbhi Dubey

Company: SAP

Created on: 21 August 2009

Author Bio

Surbhi Dubey is currently working with SAP . In over 9 years of SAP experience she has worked in various SAP solutions including the AFI- Banking.

Table of Contents

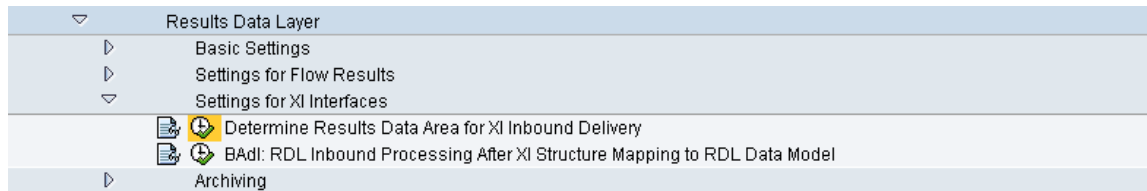
Overview	3
Customizing Settings	3
Upload Process	6
Related Content	9
Copyright.....	10

Overview

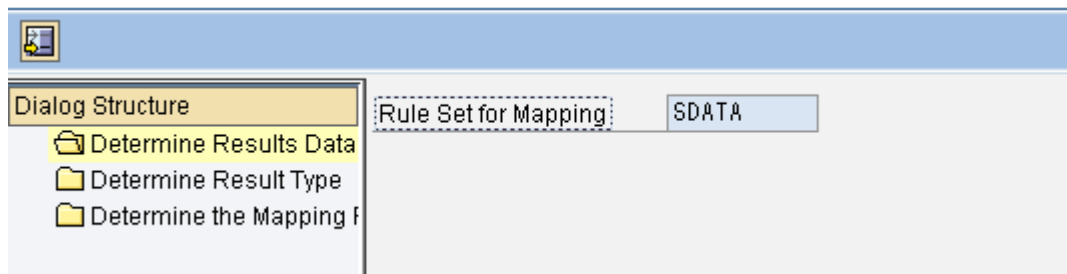
Bank Analyzer Facilitates uploading of documents from external systems. The upload can be done using the csv file or the PI interface. There are many services that are available for different type of loads for example accruals. Thus Accruals might be available in another system for example the Deposit Management and this is then sent across to Bank Analyzer using the PI. In this document the various customizing settings required to enable the accrual document upload are discussed. The service to be used is "FinancialInstrumentsAnalyticalResultsManagementFinancialInstrumentPositionAccrualAnalyticalResultIn". In this document the Customizing setting and manual Upload process using xml file are covered.

Customizing Settings

The first customizing setting is to do the determine results data area for XI delivery setting



Initially the Rule set is selected



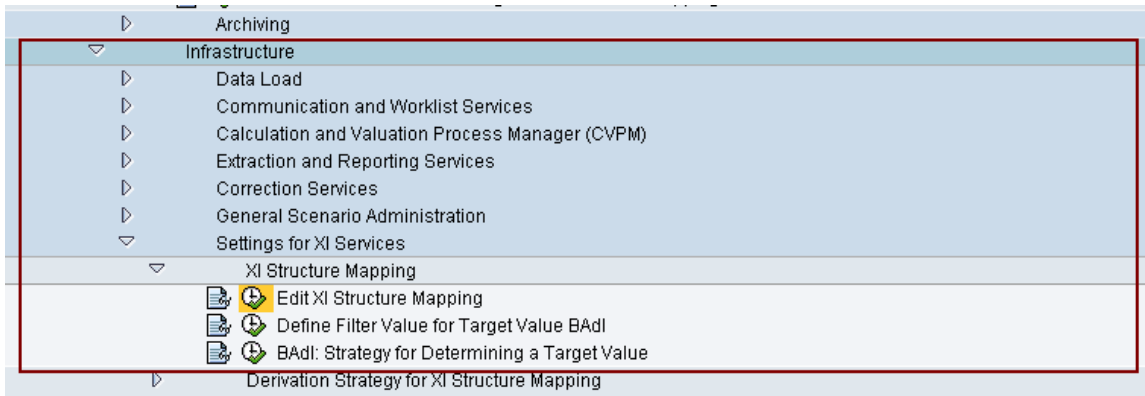
In the Result type it is ensured that the Result data area and type are available for the service

Results Data Area	Description of RDA	XI Service Operation	ResCat	Result Type	Descript. of Result Type
IFRS	Global ResultsDataArea IFRS	/BA1/SI_HK_ACR_CRE	HKACR	I_SACR	Accrual Result
SBA	Global Results Data Area	/BA1/SI_HF_ISD_POST	HFISD	SFISD	Ext. Supplied Subledger Docs

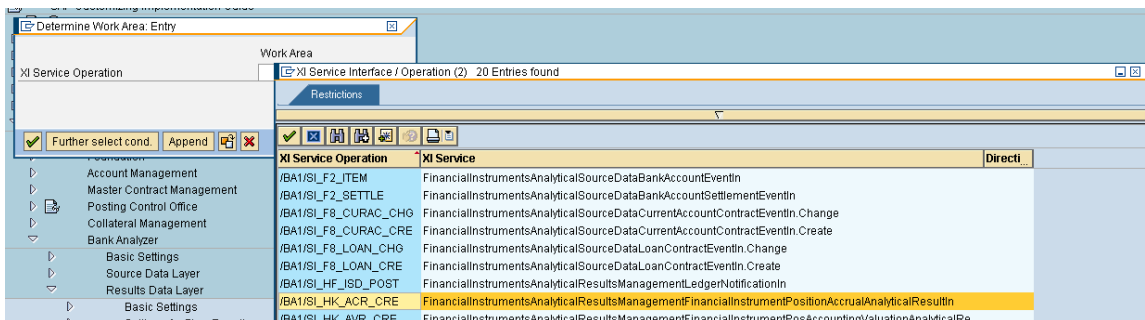
The Rule set is then assigned to the Result data area

Results Data Area	Description of RDA	Result Type	Descript. of Result Type	Rule Set
IFRS	Global ResultsDataArea IFI_SACR	Accrual Result		SDATA
IFRS	Global ResultsDataArea IFI_SFISD	Imported Documents IFRS	DATA	

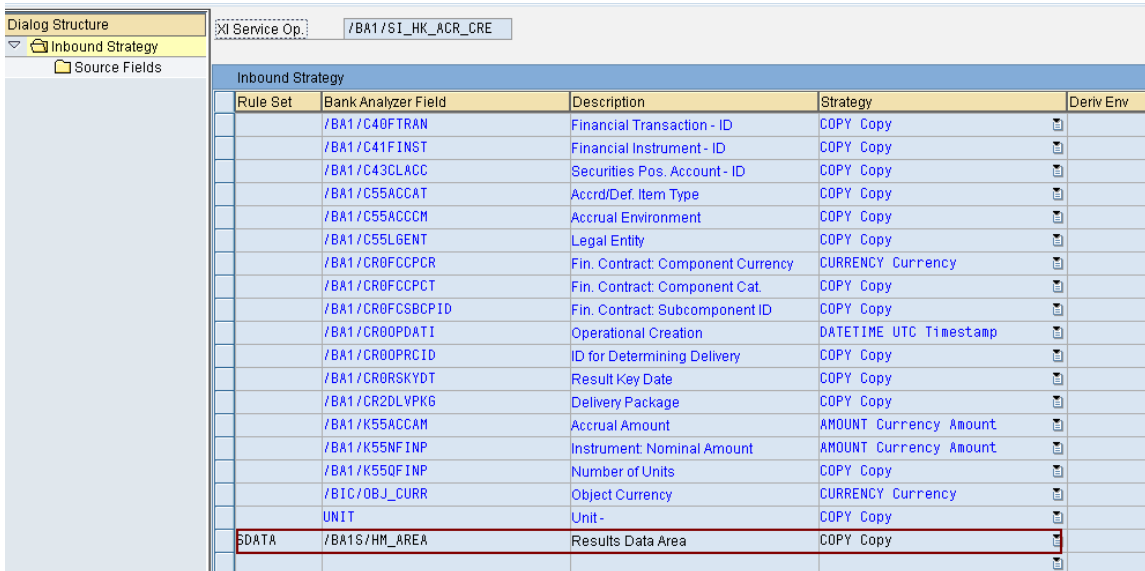
The next step entails the XI structure mapping where the source and target fields are specified



As a first step the correct service is selected



The main point to note is that the Rule set should be assigned to the result data are



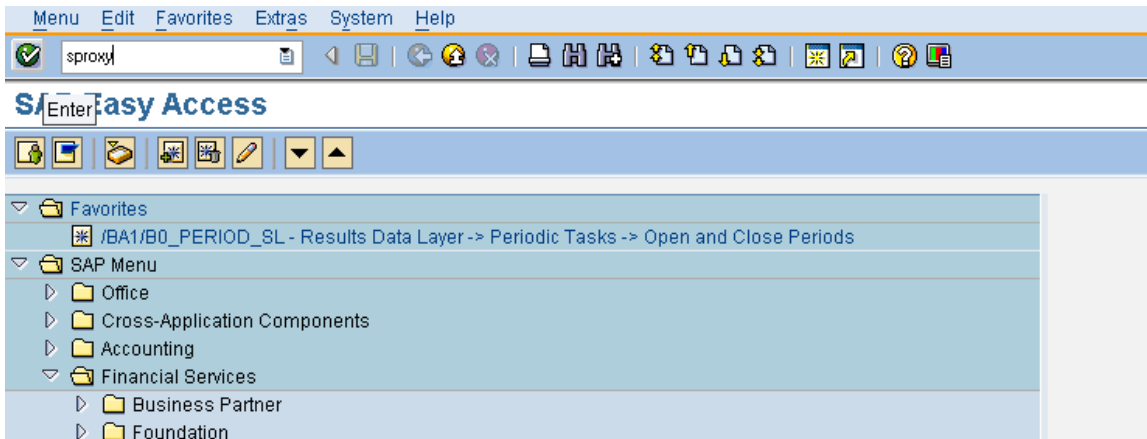
Here we see the example of source field and target field

The accrual profile should also be assigned to the result data area in the “assign accrual profile” setting as shown below

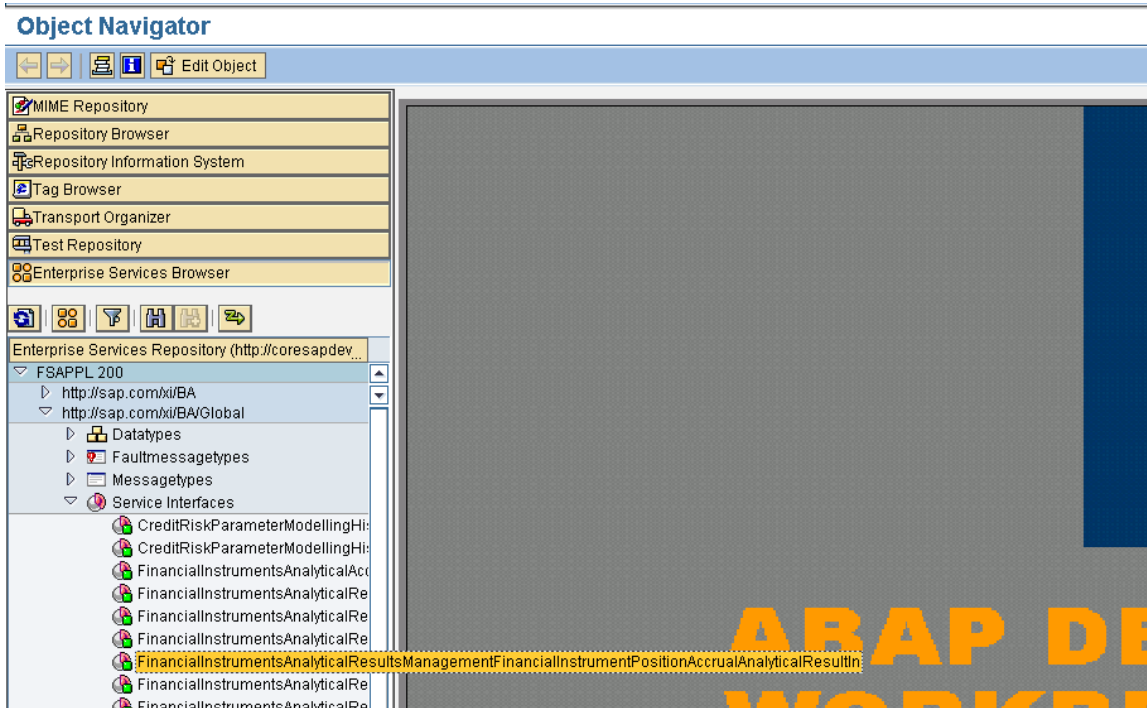
IFRS	SUB3	_KACINEO	SINT	Interest Accrual	ZI_ACC
IFRS	SUB3	_KACINIO	SINT	Interest Accrual	ZI_ACC
IFRS	SUB3	_KACINPO	SINT	Interest Accrual	ZI_ACC

Upload Process

As a first step go to the services monitor using the tcode "Sproxy"



Select the relevant service



Select the Test icon or F8

Display Service Interface FinancialInstrumentsAnalyticalResultsManagem

Service Interface: Financial Instruments Analytical Results Management

Properties | External View | Internal View | Used Objects | Configuration | WSDL | Warnings

External Key

Type: ifmnessif Service Interface | State: R released

Name: Financial Instruments Analytical Results Management Financial Inst

Namespace: http://sap.com/xi/BA/Global

Description:

Direction: Inbound

Proxy

Proxy Name: /BA1/II_SI_HK_ACR | Prefix: /BA1/

Description: FinancialInstrumentPositionAccrualAnalyticalResultIn

Interface

Provider Class: /BA1/CL_SI_HK_ACR

Description: FinancialInstrumentPositionAccrualAnalyticalResultIn

WebService Definition: /BA1/HK_ACR

General Data

Package: /BA1/SI_HK

Original Language: EN English

Created by: SAP on 15.06.2007 13:29:33

Changed by: SAP on 09.08.2007 06:42:35

Select the method create result for document upload

Test Service Provider

Test Object

Interface Name: /BA1/II_SI_HK_ACR

Method Name: CREATE_RESULTS

Input

Generate template data

Enforce stylesheet generation

Error handling

Don't catch application faults

ABAP Name (1) 2 Entries found

ABAP Name	Name	Namespace
CANCEL_RESULTS	FinancialInstrumentPositionAccrualAnalyticalResultBulkCancelRequest	http://sap.com/xi/BA/Global
CREATE_RESULTS	FinancialInstrumentPositionAccrualAnalyticalResultBulkCreateRequest	http://sap.com/xi/BA/Global

Test Service Provider

Test Object

Interface Name: /BA1/II_SI_HK_ACR

Method Name: CREATE_RESULTS

Input

Generate template data

Enforce stylesheet generation

Error handling

Don't catch application faults

Execute (F8)

Upload the xml file for accruals

Test Service Provider: Display Request

```

- <n0:FinancialInstrumentPositionAccrualAnalyticalResultBulkCreateRequest xmlns:n0="http://sap.com/xi/SAPGlobal20/Global"
  xmlns:prx="urn:sap.com:proxy:DA1::710:2008/06/25">
- <MessageHeader>
  <ID schemeID="Str 666" schemeAgencyID="Str 667" schemeAgencySchemeAgencyID="Str">Str 669</ID>
  <UUID schemeID="Str 670" schemeAgencyID="Str 671">Str 672</UUID>
  <ReferenceID schemeID="Str 673" schemeAgencyID="Str 674" schemeAgencySchemeAgencyID="Str">Str 676</ReferenceID>
  <ReferenceUUID schemeID="Str 677" schemeAgencyID="Str 678">Str 679</ReferenceUUID>
  <CreationDateTime>This is a string 680</CreationDateTime>
  <TestDataIndicator>true</TestDataIndicator>
  <ReconciliationIndicator>true</ReconciliationIndicator>
  <SenderBusinessSystemID>Str 681</SenderBusinessSystemID>
  <RecipientBusinessSystemID>Str 682</RecipientBusinessSystemID>
- <SenderParty>
  <InternalID schemeID="Str 683" schemeAgencyID="Str 684">Str 685</InternalID>
  <StandardID schemeAgencyID="Str">Str 687</StandardID>
  <StandardID schemeAgencyID="Str">Str 689</StandardID>
- <ContactPerson>
  <InternalID schemeID="Str 690" schemeAgencyID="Str 691">Str 692</InternalID>
  <OrganisationFormattedName>Str 693</OrganisationFormattedName>
  <OrganisationFormattedName>Str 694</OrganisationFormattedName>
  <PersonFormattedName>Str 695</PersonFormattedName>
  <PersonFormattedName>Str 696</PersonFormattedName>
- <PhoneNumber>
  
```

Execute after checking the xml file

Test Service Provider: Display Request

```

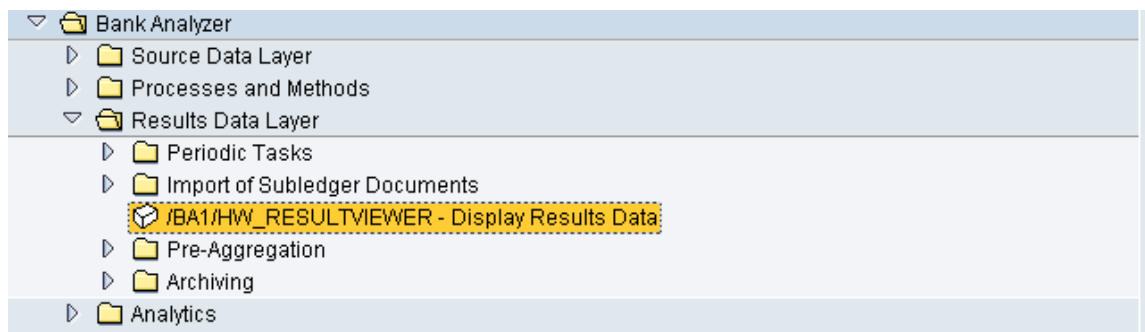
<?xml version="1.0" encoding="utf-8" ?>
<!-- -->
- <n0:FinancialInstrumentPositionAccrualAnalyticalResultBulkCreateRequest xmlns:n0="http://sap.com/xi/SAPGlobal20/Global"
  xmlns:prx="urn:sap.com:proxy:DB1:/1SAI/TAS1B906F72E552CF024017:710:2008/06/25">
- <MessageHeader>
  <ID />
  <UUID />
  <CreationDateTime>2009-04-01T17:59:59Z</CreationDateTime>
  <SenderBusinessSystemID />
</MessageHeader>
- <FinancialInstrumentPositionAccrualAnalyticalResultCreateRequestMessage>
- <MessageHeader>
  <ID />
  <UUID />
  <CreationDateTime>2009-04-01T17:59:59Z</CreationDateTime>
  <SenderBusinessSystemID />
  
```

Once file is uploaded trigger Commit work

```

<?xml version="1.0" encoding="utf-8" ?>
<!-- -->
- <n0:FinancialInstrumentPositionAccrualAnalyticalResultBulkCreateRequest xmlns:n0="http://sap.com/xi
  xmlns:prx="urn:sap.com:proxy:DB1:/1SAI/TAS1B906F72E552CF024017:710:2008/06/25">
- <MessageHeader>
  
```


As a last step the result can be seen in Result data viewer for the Result data area and type



Related Content

- [SAP MII - How to Browse, Configure, Test, and Consume an Enterprise Service](#)
- [Service Provision and Exposure](#)

Copyright

© Copyright 2009 SAP AG. All rights reserved.

No part of this publication may be reproduced or transmitted in any form or for any purpose without the express permission of SAP AG. The information contained herein may be changed without prior notice.

Some software products marketed by SAP AG and its distributors contain proprietary software components of other software vendors.

Microsoft, Windows, Excel, Outlook, and PowerPoint are registered trademarks of Microsoft Corporation.

IBM, DB2, DB2 Universal Database, System i, System i5, System p, System p5, System x, System z, System z10, System z9, z10, z9, iSeries, pSeries, xSeries, zSeries, eServer, z/VM, z/OS, i5/OS, S/390, OS/390, OS/400, AS/400, S/390 Parallel Enterprise Server, PowerVM, Power Architecture, POWER6+, POWER6, POWER5+, POWER5, POWER, OpenPower, PowerPC, BatchPipes, BladeCenter, System Storage, GPFS, HACMP, RETAIN, DB2 Connect, RACF, Redbooks, OS/2, Parallel Sysplex, MVS/ESA, AIX, Intelligent Miner, WebSphere, Netfinity, Tivoli and Informix are trademarks or registered trademarks of IBM Corporation.

Linux is the registered trademark of Linus Torvalds in the U.S. and other countries.

Adobe, the Adobe logo, Acrobat, PostScript, and Reader are either trademarks or registered trademarks of Adobe Systems Incorporated in the United States and/or other countries.

Oracle is a registered trademark of Oracle Corporation.

UNIX, X/Open, OSF/1, and Motif are registered trademarks of the Open Group.

Citrix, ICA, Program Neighborhood, MetaFrame, WinFrame, VideoFrame, and MultiWin are trademarks or registered trademarks of Citrix Systems, Inc.

HTML, XML, XHTML and W3C are trademarks or registered trademarks of W3C®, World Wide Web Consortium, Massachusetts Institute of Technology.

Java is a registered trademark of Sun Microsystems, Inc.

JavaScript is a registered trademark of Sun Microsystems, Inc., used under license for technology invented and implemented by Netscape.

SAP, R/3, SAP NetWeaver, Duet, PartnerEdge, ByDesign, SAP Business ByDesign, and other SAP products and services mentioned herein as well as their respective logos are trademarks or registered trademarks of SAP AG in Germany and other countries.

Business Objects and the Business Objects logo, BusinessObjects, Crystal Reports, Crystal Decisions, Web Intelligence, Xcelsius, and other Business Objects products and services mentioned herein as well as their respective logos are trademarks or registered trademarks of Business Objects S.A. in the United States and in other countries. Business Objects is an SAP company.

All other product and service names mentioned are the trademarks of their respective companies. Data contained in this document serves informational purposes only. National product specifications may vary.

These materials are subject to change without notice. These materials are provided by SAP AG and its affiliated companies ("SAP Group") for informational purposes only, without representation or warranty of any kind, and SAP Group shall not be liable for errors or omissions with respect to the materials. The only warranties for SAP Group products and services are those that are set forth in the express warranty statements accompanying such products and services, if any. Nothing herein should be construed as constituting an additional warranty.