

MDM Import Manager - Taxonomy Data (splitting into hierarchy) – Part 1

Applies to:

SAP NetWeaver Master Data Management (MDM) SP3, SP4, SP5.

Summary

This article provides a step-by-step procedure in manually importing the source data from MS Access database into the Taxonomy table.

Author(s): Srinivas Vemarthi

Company: SITA CORP (INDIA) PVT LTD

Created on: 02 January 2008

Author Bio

Srinivas Vemarthi is working in SITA CORP (INDIA) PVT LTD from more than 2 years. He is a member of MDM core competency team and has worked on multiple SAP MM and SAP WM projects.

Table of Contents

Business Scenario	3
Import Process Flow Overview	3
MDM Import Manager Steps	3
Snapshot of MS-Access Database table	16
Related Content	17
Disclaimer and Liability Notice	18

Business Scenario

Let's take an example of importing source data into Taxonomy table (categories). The source data which is an MS Access database table is in tab delimited format, for e.g. Safety products;personal protection;Ear protection. To achieve this, first split the source data into hierarchy source field and then map the hierarchy source field to a destination field. In value mapping, source hierarchy values will be mapped to destination hierarchy as sibling/child.

Import Process Flow Overview

1. Launch MDM Import Manager.
2. Select the Source File to Import.
3. Select the Source and Destination Tables.
4. Import the hierarchy Table into the Taxonomy.
5. Verify the Results.

MDM Import Manager Steps

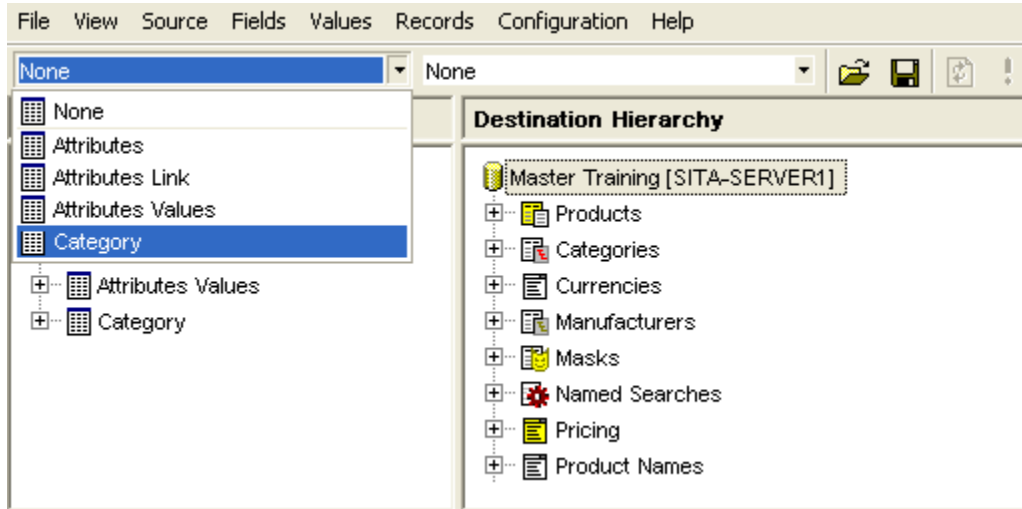
Use the MDM Import manager to import the access DB into the MDM repository

1. Start import manager, You should see:

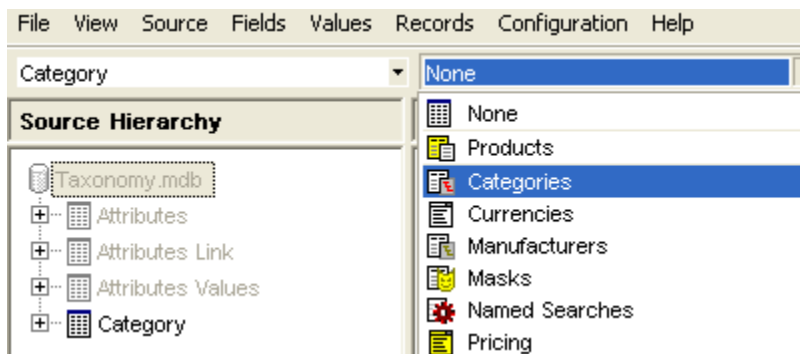
The screenshot shows the MDM Import Manager interface. At the top, there is a menu bar with 'File', 'View', 'Source', 'Fields', 'Values', 'Records', 'Configuration', and 'Help'. Below the menu bar, there are two dropdown menus, both set to 'None', and several icons. The main area is divided into two panes: 'Source Hierarchy' and 'Destination Hierarchy'. The 'Source Hierarchy' pane shows a tree structure for 'Taxonomy.mdb' with sub-items: 'Attributes', 'Attributes Link', 'Attributes Values', and 'Category'. The 'Destination Hierarchy' pane shows a tree structure for 'Master Training [SITA-SERVER1]' with sub-items: 'Products', 'Categories', 'Currencies', 'Manufacturers', 'Masks', 'Named Searches', 'Pricing', and 'Product Names'. Below these panes is a 'Source Preview' section with tabs for 'Partition Field/Value', 'Map Fields/Values', 'Match Records', and 'Import Status'. The 'Records' tab is active, showing a table with columns: 'Tables', 'Records', 'ID', 'Name', 'Type', 'Alias', 'Dimension', and 'Decimal'. The table contains 7 rows of data.

Tables	Records	ID	Name	Type	Alias	Dimension	Decimal
Attributes	1		Acidity	Numeric		None	2
Attributes Link	2		Applicable Materi...	Text (multi-valued)			
Attributes Val	3		Application	Text (multi-valued)			
Category	4		Application Method	Text			
	5		Basis Weight	Numeric		Weight for an Area	2
	6		Blade Coating	Text			
	7		Blade Finish	Text			

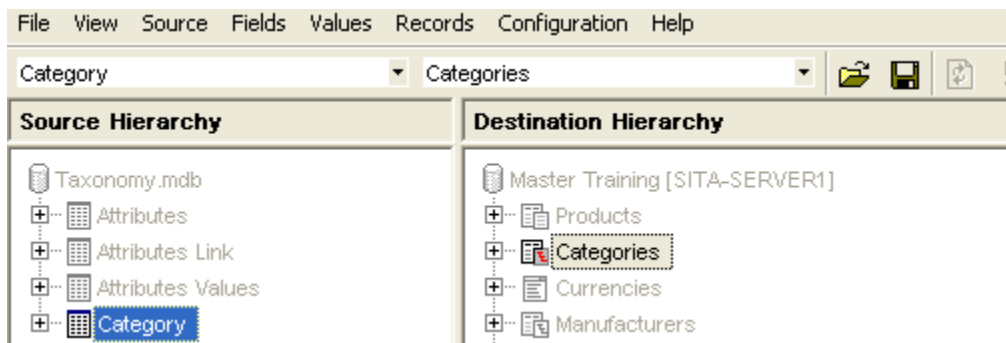
2. Directly beneath the Menu bar is the Tool bar. Select the Category table from the **first** dropdown list, as shown:



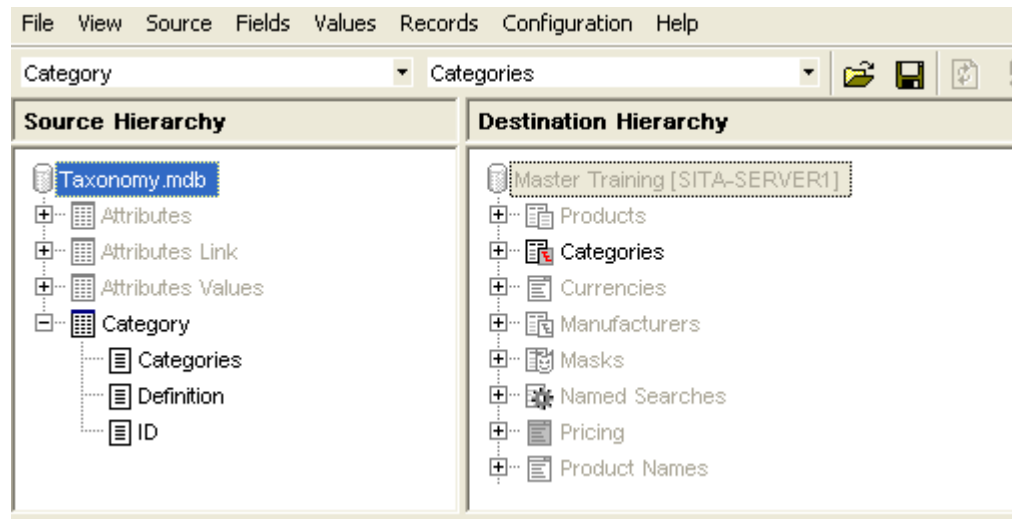
3. Click on the **Second** dropdown list and select the Table **Categories**, as shown:



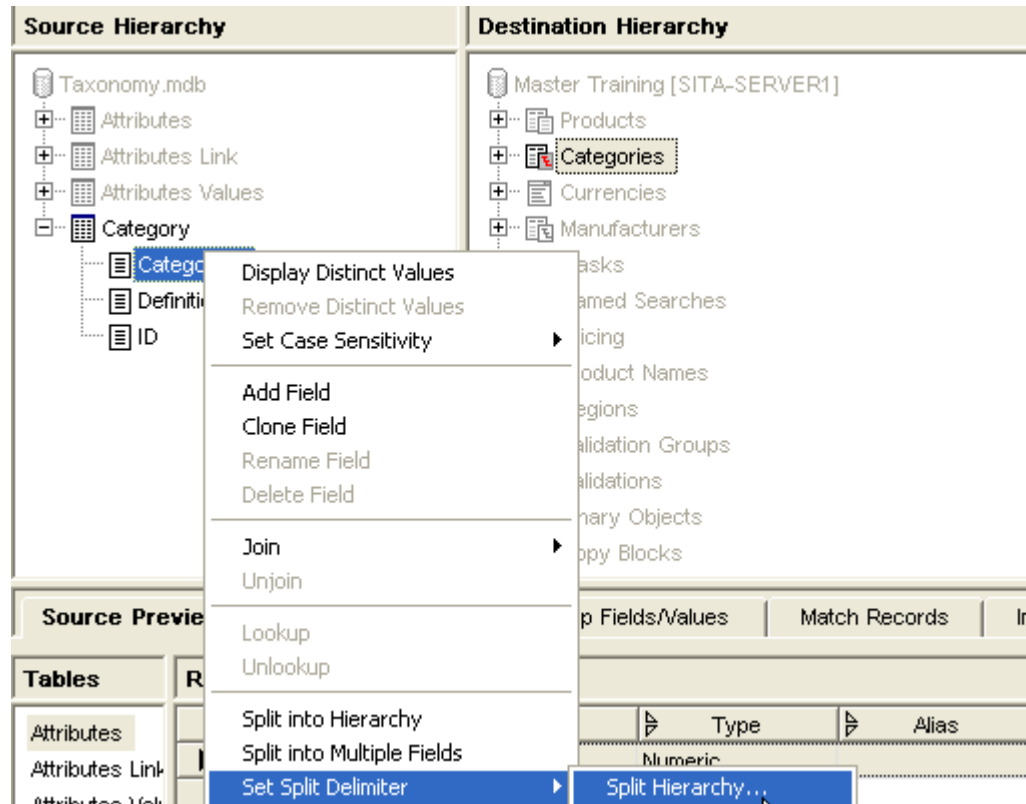
4. In the Source Hierarchy Pane click on the “+” sign to the left of the **Category** Node to display its sub-nodes.



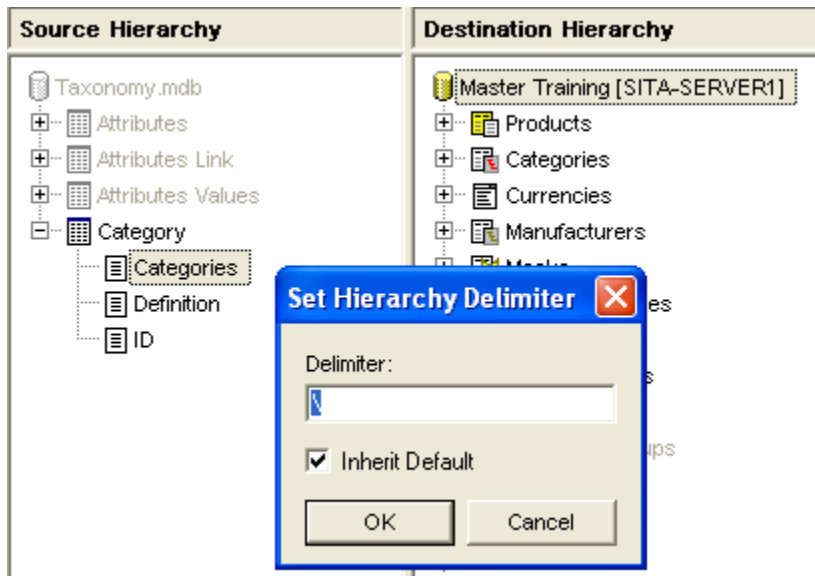
You should see:



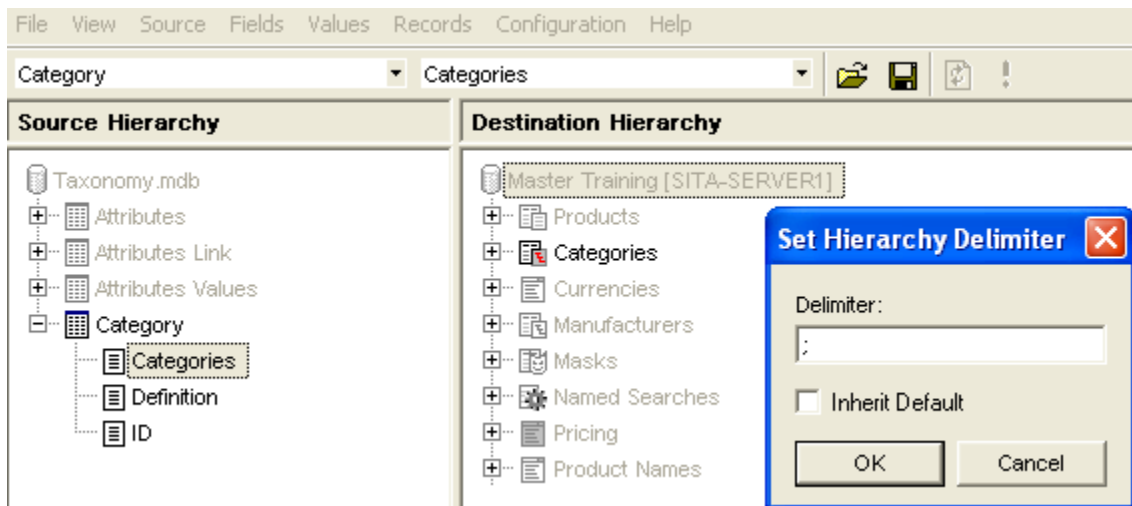
5. In the Source Hierarchy pane, right-click on the Categories node and select "Set Split Delimiter | Split Hierarchy" from the context menu as shown:



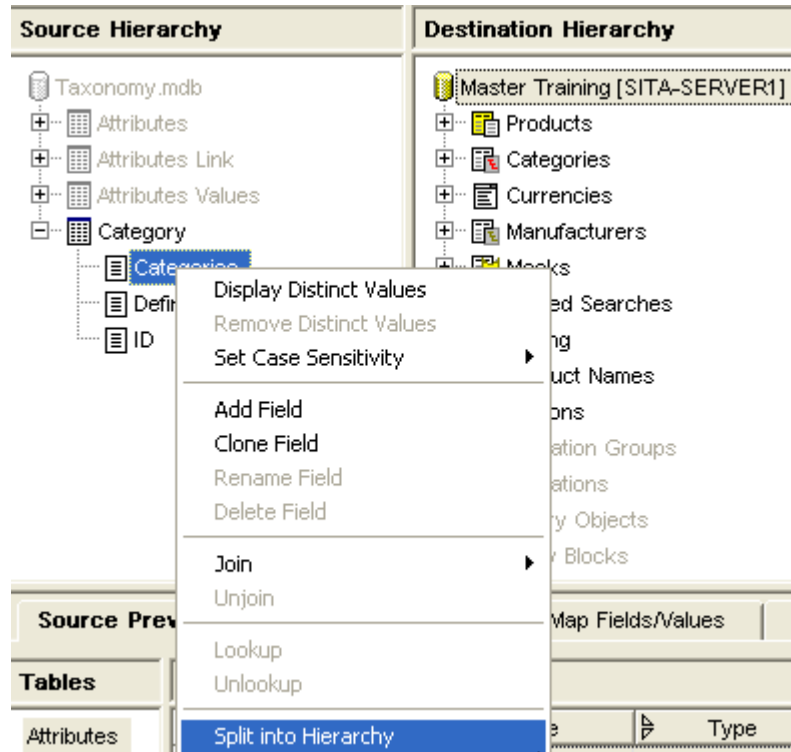
6. You should see the inherit default Delimiter as shown:



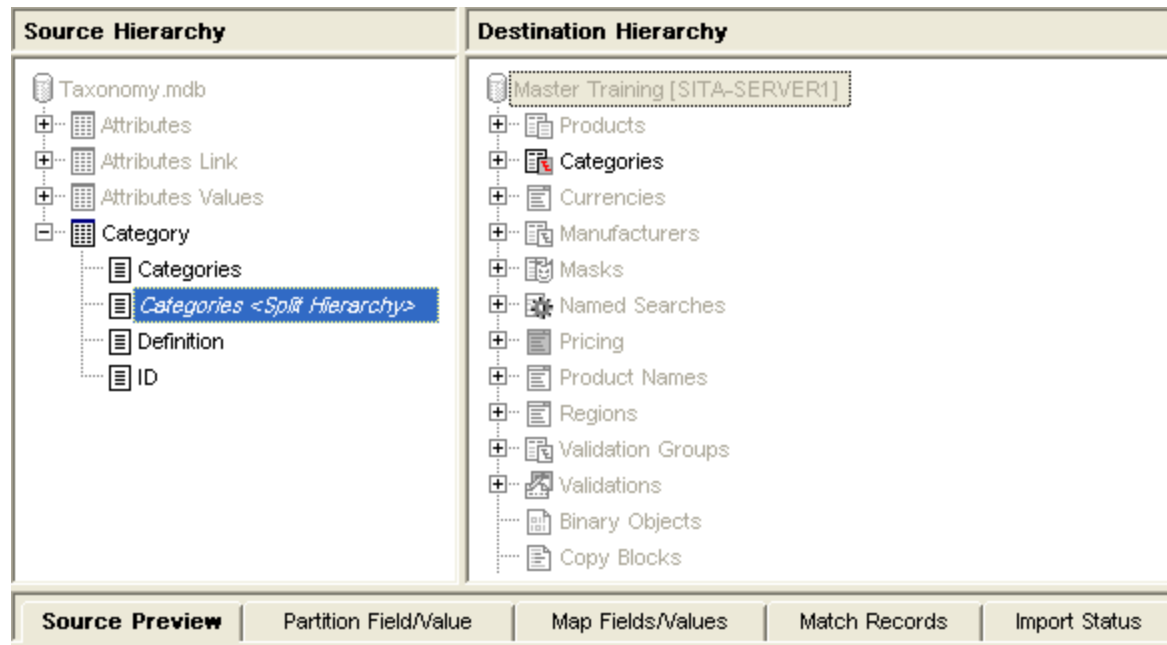
7. Enter “;” (semi-colon) for the Delimiter value, as shown and Click on the OK button:



8. In the Source Hierarchy pane, right-click on the Categories node and select “Split into Hierarchy” from the context menu as shown:



9. You should see a new field *Categories <split Hierarchy>* has been created in the source Hierarchy pane.



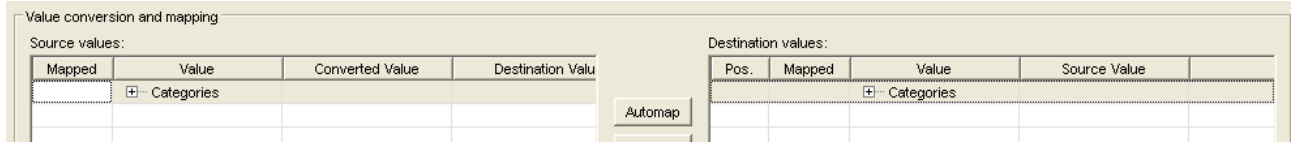
10. Press the **Map Fields/Values Tab**, You should see:

11. In the Source Fields pane, click on the *Categories<Split Hierarchy>* field to select it, as shown:

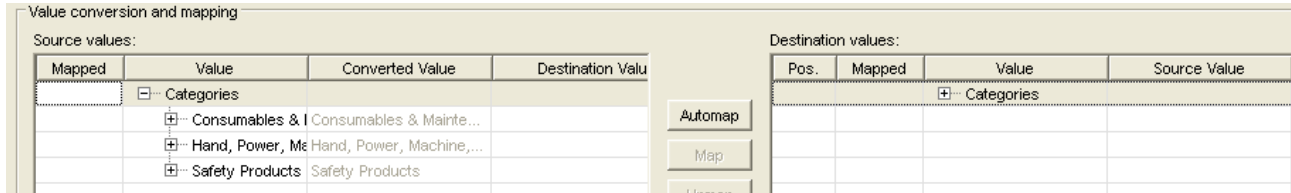
12. In the Destination Fields pane, click on the *Category [DF]* field to select it, as shown:

13. Click on the **Map** button to map both the Source and Destination fields, you should see:

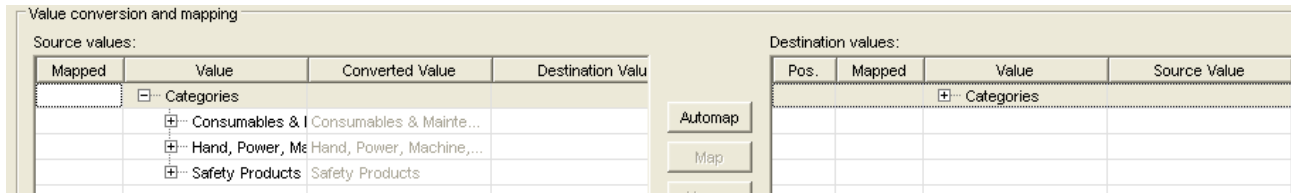
14. In the Source values pane, Click on the “+” sign to the left of the “Categories” node to expand it as shown:



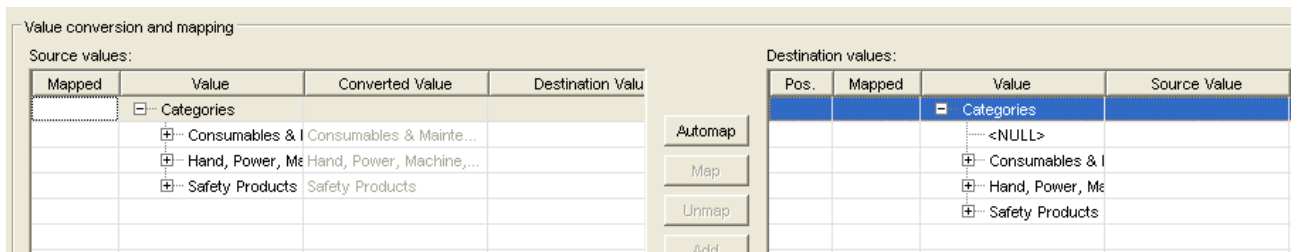
You should see:



15. In the Destination values pane, Click on the “+” sign to the left of the “Categories” node to expand it as shown:



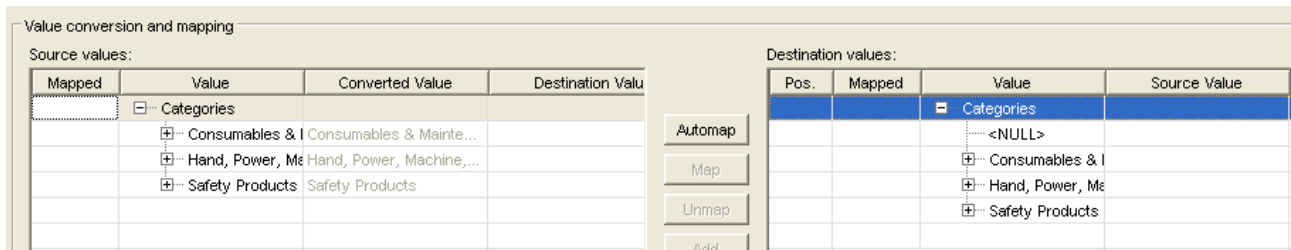
Your screen should look similar to the following (Note: If your table already contains data, you will see the existing sub-nodes, as in the example below. But if your table is empty, you'll only see a “<NULL>” node):



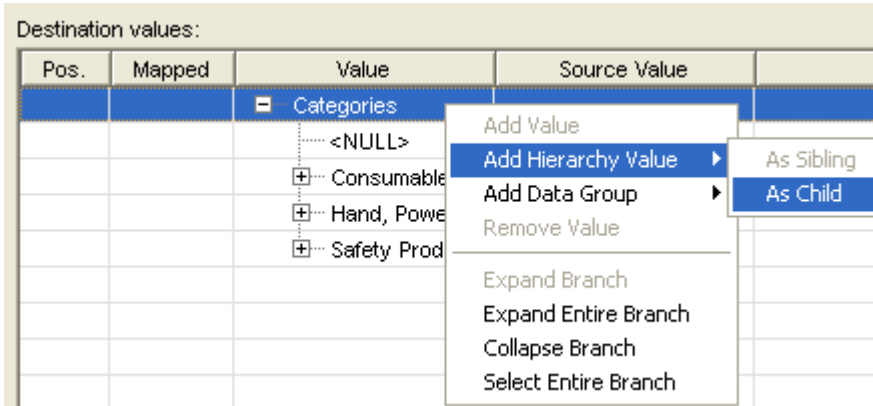
Again, if you see sub-nodes under the “Categories” root node in the Destination Values pane, it means that you already have existing data in the Categories table. If, on the other hand, you only see the “<NULL>” sub-node, then it means you have no data.

In either case, it doesn't matter. Simply continue onto the next step.

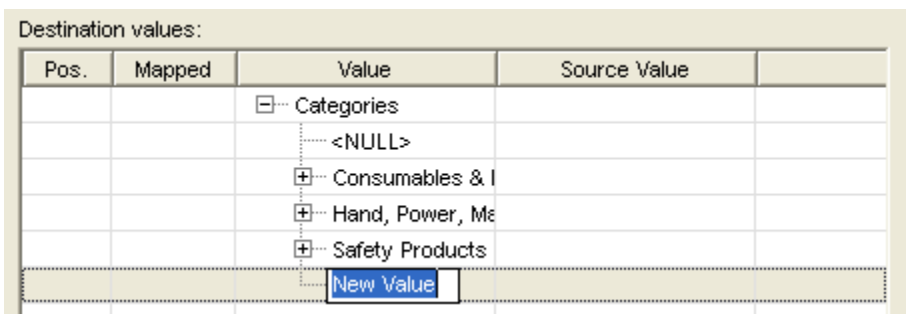
16. In the Destination Values pane, click on the Categories root node to select it, as shown:



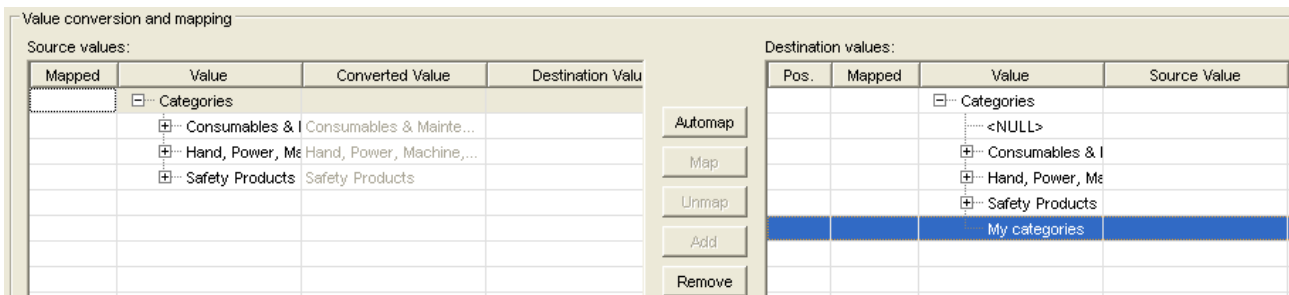
17. “In the Destination Values pane, right-click on the Categories root node and select “Add Hierarchy Value | As Child” from the context menu as shown:”



You should see:

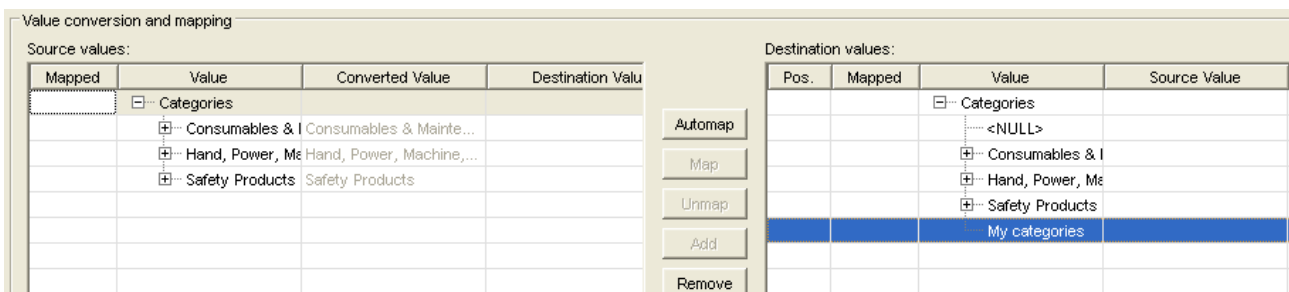


18. Type in a **new** node name which doesn't already exist directly beneath the Categories root node and press [Enter]. For example, if you type in “My Categories” as the value and press [Enter], you should see:

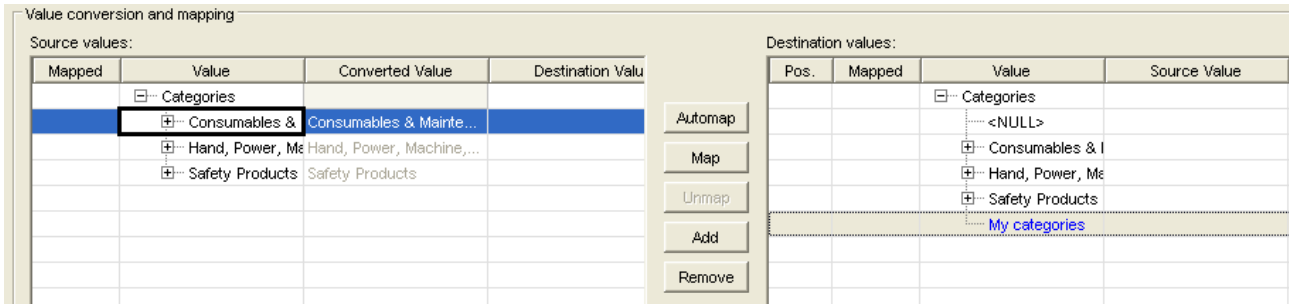


Remember to enter a **new** name that does **not** already exist directly beneath the Categories root node.

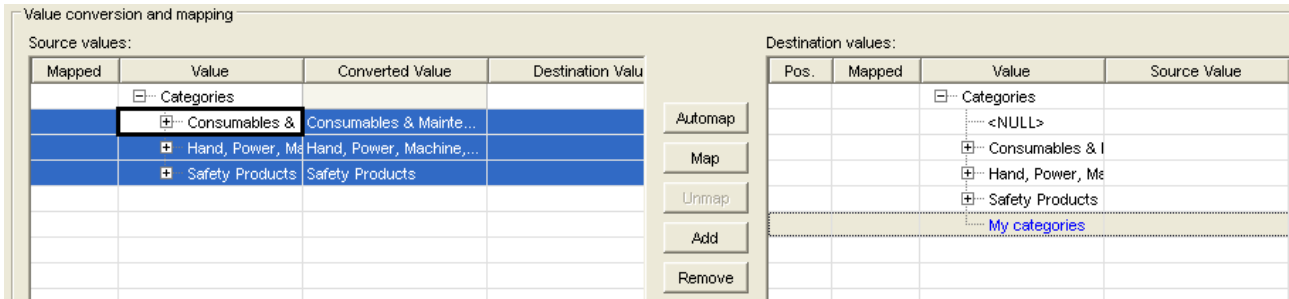
19. In the Destination Values pane, click on the **new** node name you just created (for example, “My Categories”) to select, as shown:



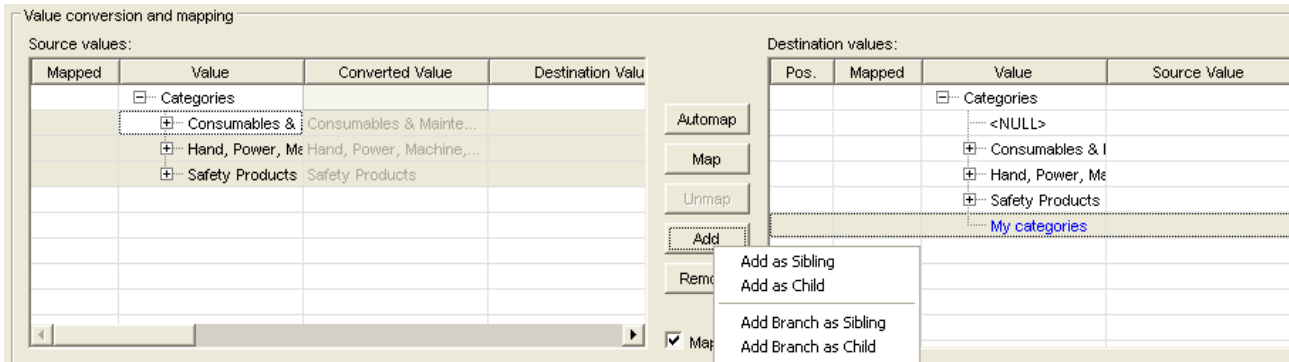
20. In the Source Values pane, click on the **first** sub-node directly beneath the Categories root node to select it, as shown:



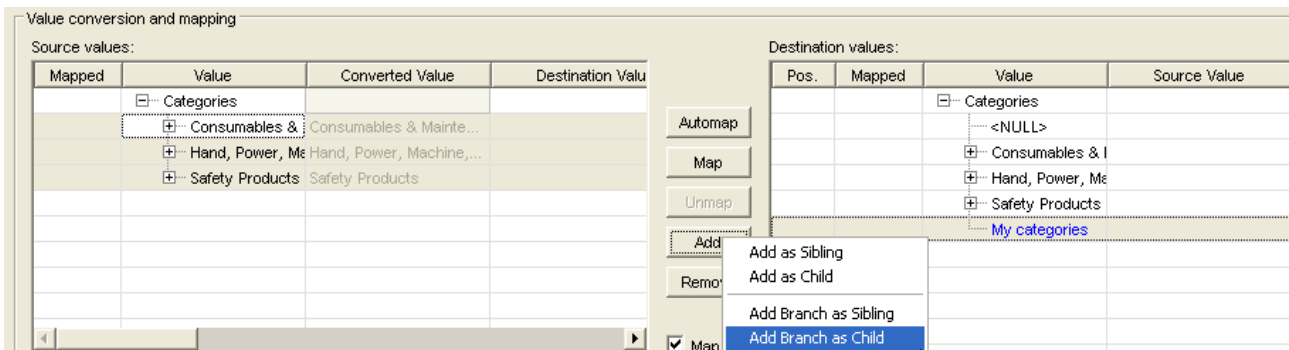
21. In the Source Values pane, press and hold the [Ctrl] key and click on the remaining sub-nodes directly beneath the root Categories node. The net result is that you would have selected all the sub-nodes directly beneath the root node. You should see:



22. In the Value Conversion and Mapping pane, press the Add button. You should see a context menu as shown below:



23. “Select “Add Branch as Child” from the context menu, as shown:”



“You should see:”

Value conversion and mapping

Source values:

Mapped	Value	Converted Value	Destination Value
	Categories		
↔	Consumables & Maintenance	Consumables & Maintenance	Categories\My categories
↔	Hand, Power, Machine	Hand, Power, Machine	Categories\My categories
↔	Safety Products	Safety Products	Categories\My categories

Destination values:

Pos.	Mapped	Value	Source Value
		<NULL>	
		Consumables & Maintenance	
		Hand, Power, Machine	
		Safety Products	
		My categories	
	↔	Hand, Power, Machine	Categories\Hand, Power, Machine
	↔	Safety Products	Categories\Safety Products
	↔	Consumables & Maintenance	Categories\Consumables & Maintenance

24. In the Source Fields pane, click on the Definition field to select it, as shown:

Field mapping

Source fields:

Mapped	Name	Type	Destination Field
	[Match Level/Type]	Text	
	Categories	Text	
✓	Categories <Split Hier...>	Text	Category
	Definition	Text	
	ID	Numeric	

Destination fields:

Mapped	F/D/Q/A	Name	Language	
✓	F	Category [DF]	English [US]	Text [90]
	F	Definition	English [US]	Text [255]

25. In the Destination Fields pane, click on the Definition field to select it, as shown:

Field mapping

Source fields:

Mapped	Name	Type	Destination Field
	[Match Level/Type]	Text	
	Categories	Text	
✓	Categories <Split Hier...>	Text	Category
	Definition	Text	
	ID	Numeric	

Destination fields:

Mapped	F/D/Q/A	Name	Language	
✓	F	Category [DF]	English [US]	Text [90]
	F	Definition	English [US]	Text [255]

26. Click on the Map button to map source to destination fields, you should see:

Value conversion and mapping

Source values:

Conv.	Value	Converted Value	Destination Value
•	<NULL>	<NULL>	
•	A Primer prepares the s...	A Primer prepares the s...	
•	Does not include comm...	Does not include comm...	
•	Includes assortments of...	Includes assortments of...	

Destination values:

Pos.	Mapped	Value	Source Value
		A Primer prepares the s...	

“Note that the Value Conversion and Mapping list has been updated.”

27. Click on Match Records tab and Select the Category [DF] from the Mapped destination fields' pane as shown:

Active	Match Level	Match Type	Default Import Action
0 of 0	None	None	Skip
0 of 0	Single	Exact	Skip
0 of 0	Single	Partial	Skip
0 of 0	Single	Conflict	Skip
0 of 0	Multiple	Exact	Skip
0 of 0	Multiple	Partial	Skip
0 of 0	Multiple	Conflict	Skip
0 of 0	Multiple	Conflict	Skip

28. Click on the Add  button.

Active	Match Level	Match Type	Default Import Action
0 of 0	None	None	Skip
0 of 0	Single	Exact	Skip
0 of 0	Single	Partial	Skip
0 of 0	Single	Conflict	Skip
0 of 0	Multiple	Exact	Skip
0 of 0	Multiple	Partial	Skip
0 of 0	Multiple	Conflict	Skip
0 of 0	Multiple	Conflict	Skip

29. In the Default Import Actions list, for **all** rows with a **non-zero** record count in the “Active” column, click on its Default Import Action column dropdown list and select “Create” as shown (**Note: If you already have the data in your table, then the “Create” option will be not be available. Instead select the “update (All mapped fields)” option.**):

Active	Match Level	Match Type	Default Import Action
38 of 38	None	None	Create
0 of 0	Single	Exact	Skip
0 of 0	Single	Partial	Create
0 of 0	Single	Conflict	Skip
0 of 0	Multiple	Exact	Skip
0 of 0	Multiple	Partial	Skip
0 of 0	Multiple	Conflict	Skip
0 of 0	Filtered	Source	Skip
0 of 0	Filtered	Destination	Skip

Record No.	Active	Import Action	Match Level	Match Type	Exact	ID	Categories	Definition
1	•	Skip	None	None		0 1	Consumables & ...	<NULL>
2	•	Skip	None	None		0 2	Consumables & ...	A Primer prepares the surface c
3	•	Skip	None	None		0 3	Consumables & ...	<NULL>
4	•	Skip	None	None		0 4	Consumables & ...	<NULL>

You should see:

Value matching

Mapped destination fields: [Empty]

Matching fields: Category (DF) [Key] [All]

Buttons: Add, Remove, Combine, Split

Default import actions

Active	Match Level	Match Type	Default Import Action
38 of 38	None	None	Create
0 of 0	Single	Exact	Skip
0 of 0	Single	Partial	Skip
0 of 0	Single	Conflict	Skip
0 of 0	Multiple	Exact	Skip
0 of 0	Multiple	Partial	Skip
0 of 0	Multiple	Conflict	Skip
0 of 0	Filtered	Source	Skip
0 of 0	Filtered	Destination	Skip

Record matching

Source records:

Record No.	Active	Import Action	Match Level	Match Type	Exact	ID	Categories	Definition
1	•	Create	None	None		0 1	Consumables & ...	<NULL>
2	•	Create	None	None		0 2	Consumables & ...	A Primer prepares the surface of a ...
3	•	Create	None	None		0 3	Consumables & ...	<NULL>

30. Click the Import Status Tab. You should see:

File View Source Fields Values Records Configuration Help

Category Categories

Source Hierarchy

- Taxonomy.mdb
 - Attributes
 - Attributes Link
 - Attributes Values
 - Category
 - Categories
 - Categories <Split Hierarchy>**
 - Definition
 - ID


Destination Hierarchy

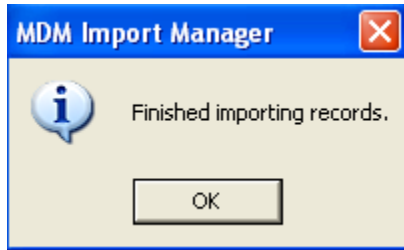
- Master Training [SITA-SERVER1]
 - Products
 - Categories
 - Currencies
 - Manufacturers
 - Masks
 - Named Searches
 - Pricing
 - Product Names

Source Preview Partition Field/Value Map Fields/Values Match Records **Import Status**

Action items: Ready to import

Table Mapping	Source	Destination	Fields Mapped
	Category	Categories	2 of 3

31. Click on the “Exclamation mark” () on the menu bar to execute import. You should see message box as “Finished Importing Records”.



Click the OK button to close the message box.

Successfully Imported the Hierarchy into the Taxonomy Table.

32. The result of the import process can be viewed by the Data Manager.

Linked	Name	Type
	Acidity	Numeric
	Applicable Materials	Text
	Application	Text
	Application Method	Text
	Basis Weight	Numeric
	Blade Coating	Text
	Blade Finish	Text
	Blade Length	Numeric

Snapshot of MS-Access Database table

ID	Categories
1	Consumables & Maintenance Solutions;Cleaning, Freshening & Softening;Cleaners;Cleaner Compounds
2	Consumables & Maintenance Solutions;Priming & Filling;Primers;Primer Compounds
3	Consumables & Maintenance Solutions;Priming & Filling;Primers;Primer Compounds
4	Consumables & Maintenance Solutions;Painting & Marking;Paints;Paint Compounds
5	Consumables & Maintenance Solutions;Painting & Marking;Paints;Paint Compounds
6	Consumables & Maintenance Solutions;Painting & Marking;Painting, Marking, & Protecting Accessories
7	Consumables & Maintenance Solutions;Bonding;Threadlocking Materials
8	Consumables & Maintenance Solutions;Bonding;Retaining Materials
9	Consumables & Maintenance Solutions;Additives & Thinners;Solvents/Thinners
10	Consumables & Maintenance Solutions;Additives & Thinners;Additives
11	Consumables & Maintenance Solutions;Consumables & Maintenance Solution Sets
12	Safety Products;Personal Protection;Eye/Face Protection;Goggles
13	Safety Products;Personal Protection;Eye/Face Protection;Lenses & Windows
14	Safety Products;Personal Protection;Eye/Face Protection;Eye/Face Protection Parts & Accessories
15	Safety Products;Personal Protection;Eye/Face Protection;Earmuffs
16	Safety Products;Personal Protection;Ear Protection;Head Protection Parts & Accessories
17	Safety Products;Personal Protection;Head Protection;Gloves
18	Safety Products;Personal Protection;Hand/Foot & Limb Protection;Boots/Shoes
19	Safety Products;Personal Protection;Hand/Foot & Limb Protection
20	Hand, Power, Machine, & Measuring Tools;Assembly & Fastening;Wrenches;Manual Wrenches;Manual Wrench (units)
21	Hand, Power, Machine, & Measuring Tools;Assembly & Fastening;Wrenches;Manual Wrenches;Manual Wrench sets
22	Hand, Power, Machine, & Measuring Tools;Assembly & Fastening;Wrenches;Manual Wrenches;Manual Wrench Parts & Accessories
23	Hand, Power, Machine, & Measuring Tools;Assembly & Fastening;Drive Tools
24	Hand, Power, Machine, & Measuring Tools;Assembly & Fastening;Screwdrivers;Manual Screwdrivers;Screwdriver (units)
25	Hand, Power, Machine, & Measuring Tools;Assembly & Fastening;Screwdrivers;Manual Screwdrivers;Screwdriver Sets
26	Hand, Power, Machine, & Measuring Tools;Assembly & Fastening;Screwdrivers;Manual Screwdrivers;Screwdriver Parts & Accessories
27	Hand, Power, Machine, & Measuring Tools;Assembly & Fastening;Assembly & Fastening Tool Sets
28	Hand, Power, Machine, & Measuring Tools;Striking & Punching;Hammers;Hand Hammers;Hand Hammer (units)
29	Hand, Power, Machine, & Measuring Tools;Striking & Punching;Hammers;Hand Hammers;Hand Hammer Heads & Tips
30	Hand, Power, Machine, & Measuring Tools;Striking & Punching;Hammers;Hand Hammers;Hand Hammer & Tip Sets
31	Hand, Power, Machine, & Measuring Tools;Striking & Punching;Hammers;Hand Hammers;Hand Hammer Parts & Accessories
32	Hand, Power, Machine, & Measuring Tools;Striking & Punching;Striking & Punching Handles
33	Hand, Power, Machine, & Measuring Tools;Striking & Punching;Hatchets;Hatchet (units)
34	Hand, Power, Machine, & Measuring Tools;Gripping & Extracting;Pliers;Pliers (units)
35	Hand, Power, Machine, & Measuring Tools;Gripping & Extracting;Pliers;Pliers & Tips Sets
36	Hand, Power, Machine, & Measuring Tools;Gripping & Extracting;Pliers;Pliers Parts & Accessories
37	Hand, Power, Machine, & Measuring Tools;Carrying, Transporting, & Storing;Tool Carriers;Tool Carrier (units)
38	Hand, Power, Machine, & Measuring Tools;Carrying, Transporting, & Storing;Tool Carriers;Tool Carrier (units)

Related Content

http://help.sap.com/saphelp_mdm550/helpdata/en/43/12036df94c3e92e10000000a1553f6/frameset.htm

Disclaimer and Liability Notice

This document may discuss sample coding or other information that does not include SAP official interfaces and therefore is not supported by SAP. Changes made based on this information are not supported and can be overwritten during an upgrade.

SAP will not be held liable for any damages caused by using or misusing the information, code or methods suggested in this document, and anyone using these methods does so at his/her own risk.

SAP offers no guarantees and assumes no responsibility or liability of any type with respect to the content of this technical article or code sample, including any liability resulting from incompatibility between the content within this document and the materials and services offered by SAP. You agree that you will not hold, or seek to hold, SAP responsible or liable with respect to the content of this document.