

# File Stores in Seagate Holos

## A Guide to Creating File Stores in Windows NT, UNIX & VMS

---

### Overview

This document has been written as a quick guide to File Store creation on Windows NT, UNIX & VMS and does not form part of the Seagate Holos documentation set.

### UNIX

Log into your UNIX server. Edit the **.profile** file and enter your *File Store*. The syntax for setting up your File Store can differ depending on what shell is being used on your server. To find out what shell you are using you enter :

```
echo $SHELL
```

If you are using a C shell the result of running the above command will be :

```
/bin/csh
```

If you are using a Korn or Bourne shell the result of running the above command will be :

```
/bin/ksh
```

### C shell

```
setenv filestore path/ (the forward slash is essential)
```

For example

```
setenv live_code /usr/users/version50d/livecode/
```

## Korne or Borne shell

```
filestore = path/ (the forward slash is essential)
export filestore
```

For example

```
live_code=/usr/users/holos/version50d/livecode/
export live_code
```

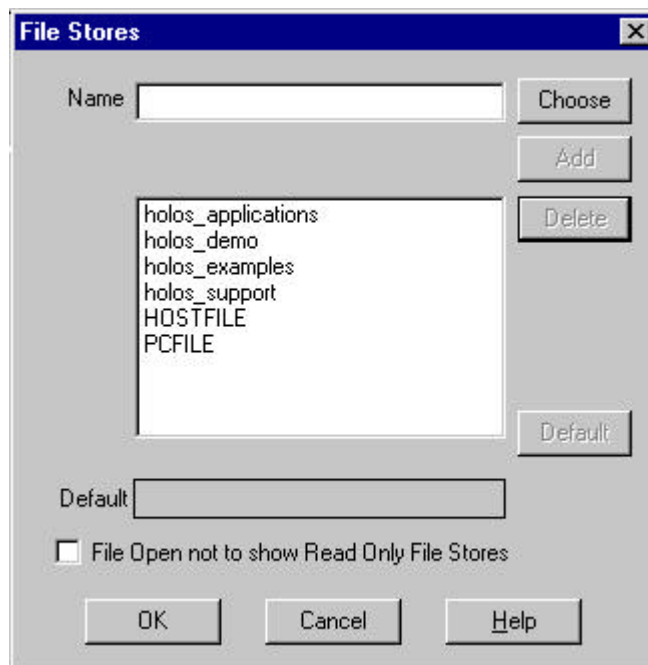
Having made these entries in the **.profile** file log out and back in again. Test the contents of your filestore by entering :

```
echo $filestore
```

Also check if the path of your *filestore* exists by :

```
cd $filestore
```

Now press F4 to initialise communication between the client and the server. Select File Store from the Options menu. You will be presented with a dialog similar to this :



You will notice that the Add button is disabled. To add a file store, either type the name into the Name edit box or hit the Choose button to select from a list. (NOTE: The choose button is only available from Seagate Holos version 7). As soon as you start entering the name of your *File Store* into Name edit box this button will become enabled. Having entered the name of your *File Store* press the Add button. This will not work when

1. you have not set the File Store,
2. you have missed out the forward slash (/) at the end of the path of the File Store,
3. there are no read or write permissions for the File Store path,
4. you have not entered the File Store correctly in the Name edit box.
5. Some shells have a maximum number of characters allowed for an environment variable.

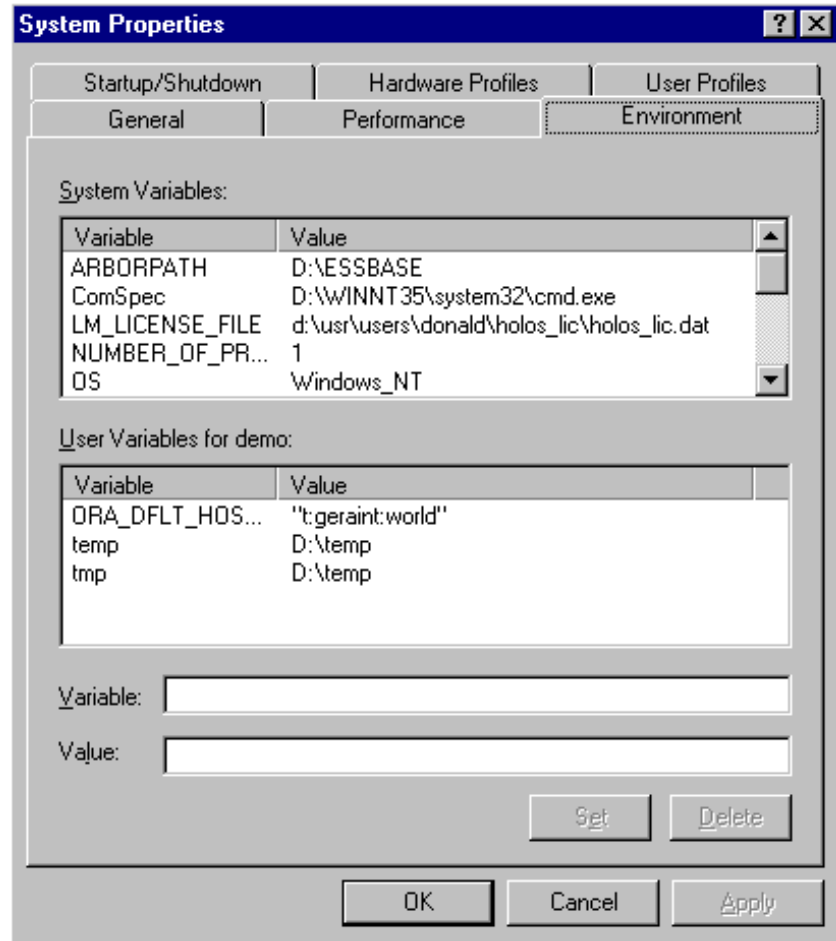
If you have done one of the above you will be presented with this :



## NT

### Method 1

Log onto your NT server as the **administrator**. Open the Control Panel. Select the System icon. You will be presented with a dialog similar to this :



To create a File Store enter the name of your File Store into the Variable edit box. To give your File Store a value enter the value in the Value edit box. You will see the Set button become enabled as soon as you enter a value into the Value edit box.

### Method 2

A far easier way of creating a File Store is by setting a global variable up within the .dat file that is run when you invoke Seagate Holos on the server.

To set this up you enter :

```
set filestore = drive:\path
```

For example

```
set holos_shared = c:\users\dev
```

If you modify the .dat file from within a Seagate Holos environment you will have to log out of Seagate Holos and log back in, in order to make the File Store active.

Having done this you can examine the contents of your File Store by entering :

```
echo %filestore%
```

For example

```
echo %holos_shared%
```

```
c:\users\dev
```

Don't forget that NT is CaSe-SeNsItIvE.

## VMS

To define a File Store within a VMS environment you can do it in one of three ways. This section only covers two of these methods.

### Method 1

Enter :  
`define logical_name absolute_path`

For example  
`define holos_shared DISK1:[PROJ1.DEV]`

To examine the contents of this logical enter :  
`show logical filestore`

For example  
`show logical holos_shared`  
`DISK1:[PROJ1.DEV]`

### Method 2

To save you defining this File Store every time you log into your VMS account you can include it in your LOGIN.COM file. Every user account will contain this file.

To edit this file enter :  
`EDIT/EDT LOGIN.COM`

By entering the above command you will be in a single line editing mode. To move into the multi-line editing mode enter :  
`c`

Now within the multi-line editing mode enter :  
`filestore ::= path absolute_path`

For example  
`holos_shared ::= DISK1:[PROJ1.DEV]`

To make this change active you can either log out of your account or enter :  
`@LOGIN`

To examine the contents of this logical enter :  
`show logical filestore`

For example  
`show logical holos_shared`  
`DISK1:[PROJ1.DEV]`