

Consuming Search Results from SAP NetWeaver Enterprise Search 7.2 in Microsoft Outlook 2007



Applies to:

SAP NetWeaver Enterprise Search 7.2 Microsoft Outlook 2007 Internet Explorer 8. For more information, visit the [Search homepage](#).

Summary

You can use Microsoft Office Outlook 2007 to track updates to search results and manage notifications from SAP NetWeaver Enterprise Search using OpenSearch.

Author: André Fischer, Technology Solution Management
Holger Bruchelt, Duet Regional Implementation Group

Company: SAP AG

Created on: 23 April 2010

Author Bio



André Fischer works at SAP AG in the Technology Solution Management where he addresses various kinds of interoperability topics regarding SAP and Microsoft solutions. In addition Andre has lent his talents as an SAP technology consultant for eight years before joining SAP 2004.



Holger Bruchelt works at SAP AG in the Duet Regional Implementation Group in Germany. Before that he has been working as a technical NetWeaver consultant since 2002.

Table of Contents

Introduction	3
Integration into Microsoft Office Outlook 2007	4
Step 1: Configuring SAP NetWeaver Enterprise for Single Sign-On.....	4
Step 2: Perform a search in SAP NetWeaver Enterprise Search	4
Step 3: Subscribe to a feed.....	4
Step 4: Testing the setup	7
Outlook	10
Related Content	11
Copyright.....	12

Introduction

In this whitepaper we would like to describe how search results from SAP NetWeaver Enterprise Search 7.2 can be consumed by Microsoft Outlook 2007 using the OpenSearch interface of SAP NetWeaver Enterprise Search 7.2.

As the OpenSearch standard (<http://www.opensearch.org/>) has evolved and became popular, SAP NetWeaver Enterprise Search provides an interface for its search functionality in accordance with the OpenSearch standard as of Enterprise Search 7.0 SP3.

Since the OpenSearch format is based on RSS 2.0 or ATOM 1.0 the search results can be displayed by any feed reader. This works fine with sources that are public available on the web and that do not require authentication. Access to SAP NetWeaver Enterprise Search however is only possible for users that are providing credentials.

There are known issues that may occur if you try to use Outlook for the consumption of an RSS feed that requires authentication. As described in the Microsoft KB article [917125](#) Outlook only supports the consumption of RSS sites that are based on Microsoft Office SharePoint and that are internal to your domain.

Fortunately Windows Integrated Authentication can be leveraged by SAP NetWeaver Enterprise Search as well. In a recent [whitepaper](#) we described how SAP NetWeaver Enterprise Search can be configured to support Integrated Windows Authentication especially for its OpenSearch interface.

Using an SAP NetWeaver Enterprise Search installation that is configured as described in the whitepaper mentioned above allows for an out-of-the-box integration into Microsoft Outlook 2007 and Microsoft Office SharePoint 2007.

In our demo we use data of the Enterprise Procurement Model. Enterprise Procurement Model (EPM) is a reference/proxy application which integrates many NW technologies that are used by Business Suite applications. It is based on a common business process model and follows the business object (BO) paradigm to support a well-defined and encapsulated business logic. NW Technologies integrated into EPM that are used in our demo are WebDynpro ABAP and Enterprise Search.

Integration into Microsoft Office Outlook 2007

Step 1: Configuring SAP NetWeaver Enterprise for Single Sign-On

To have this integration scenario work seamlessly for your end-users it is necessary to configure the SAP Enterprise Search server such that it supports Integrated Windows Authentication as described in our recent [whitepaper](#) . If no Single Sign-On is configured the user is prompted to provide username and password every time Internet Explorer tries to refresh the feed results.

Step 2: Perform a search in SAP NetWeaver Enterprise Search

We start our sample with performing a search for purchase order documents that contain a certain product as a line item. In our example we find two purchase orders that contain the product "HT-1000" as a line item.



Figure 1 Searching in Enterprise Search for specific purchase orders

Step 3: Subscribe to a feed

Since we would like to be notified if there is a new purchase order that contains this product we use the option to subscribe to the results of this search. To subscribe to the search results we use the link *Subscribe* that can be found at the bottom of window that is displaying the search results.

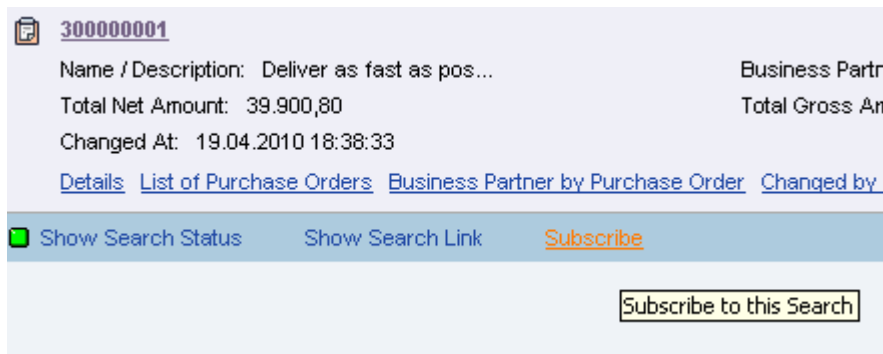


Figure 2 Subscribe to a search in SAP NetWeaver Enterprise Search

When clicking on this link a new window opens that point to the OpenSearch interface of SAP NetWeaver Enterprise Search using the same query options that have been used in the search UI.

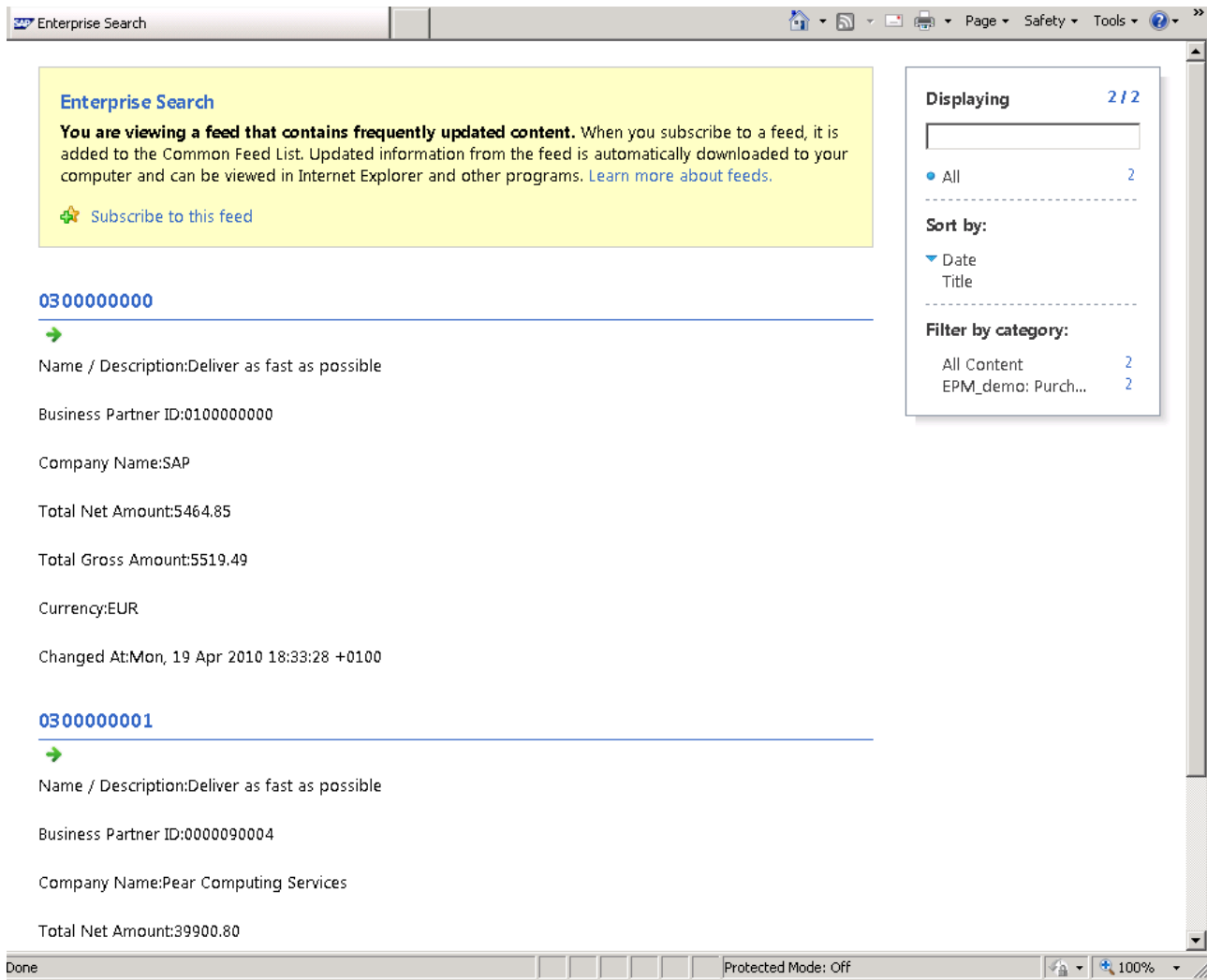


Figure 3 OpenSearch interface of SAP NetWeaver Enterprise Search

When you click the *Subscribe to this feed* link, the feed is automatically added to the Favorites Center and to the Common Feed List for sharing with other programs such as Outlook.

A new window opens where we have to enter a name for the feed (we change it in our example to SAP Enterprise Search) and select the folder where the feed should be created in.

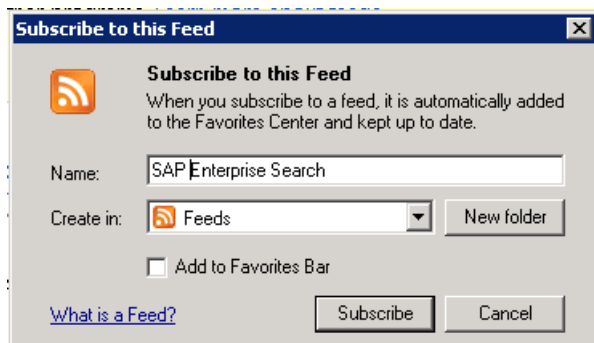


Figure 4 Subscribe to this Feed dialogue

When you click **Subscribe** you will receive a message that you successfully have subscribed to this feed.

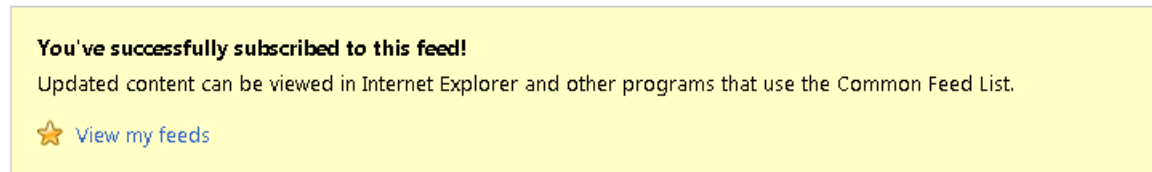


Figure 5 Notification that the feed has successfully been subscribed

When you switch to Outlook you will recognize that a new folder has been created in the Outlook Syndicated Content (RSS) directory.

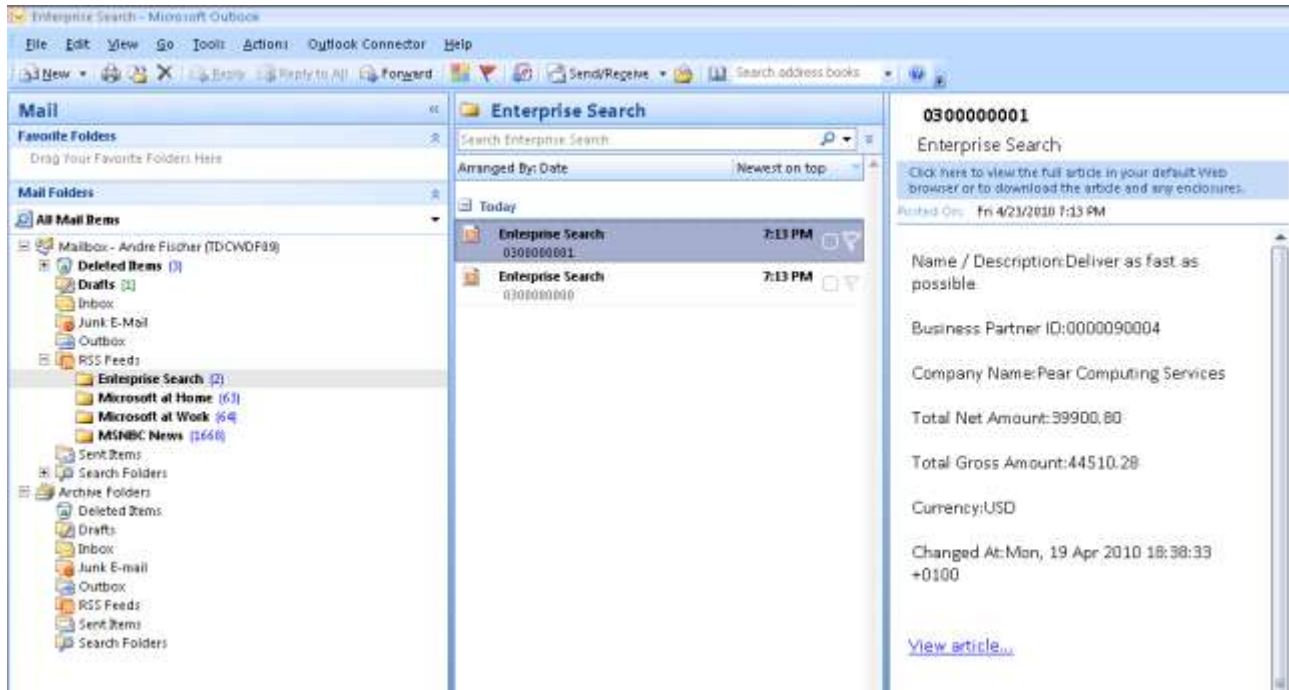


Figure 6 Feed content in Outlook 2007

Step 4: Testing the setup

The setup can be tested by creating new objects in the data source that is connected to SAP Enterprise Search that fit to the search query. We therefore change a purchase order and add a new line item to it so that it now contains the product HT-1000.

PO Maintenance Application

Purchase Order: 300000005, AVANTEL

Save Print Preview

Purchase Order Details

General Data

Pur. Ord. ID: 300000005
Employee Responsible: D027594

Business Partner

Bus. Part. ID: * 100000008 AVANTEL
Address: [Map](#)

Processing Data

PO Lifecycle: New
PO Approval: Initial
PO Confirmation: Initial
PO Ordering: Initial

Value

Net Amt.: 34.752,09 MXN
Tax Amt.: 347,51 MXN
Gross Amt.: 35.099,60 MXN

Dates

Created at: 03.11.2009 10:26:25

Items

Insert Show Pictures

Actions	PO Item Pos	Product ID	Product	Quantity	Qty. Unit	Gross Amt.	Currency
	1	HT-1021	High resolution 32 ...	1,000	EA	1.461,26	MXN
	2	HT-1106	Complete package ...	2,000	EA	666,88	MXN
	3	HT-1600	1.8 Ghz. dual cor. ...	2,000	EA	11.768,52	MXN
	4	HT-1000	EN, Notebook Basic 15	3,000	EA	4.383,77	MXN
	5	HT-1001	EN, Notebook Basic 17	2,000	EA	666,88	MXN
	6	HT-1002	EN, Notebook Basic 18	2,000	EA	11.768,52	MXN
	7	HT-1003	EN, Notebook Basic 19	3,000	EA	4.383,77	MXN
	10	ht-100		23		0,00	

Figure 7 Changing a purchase order in the Enterprise Procurement demo model

In our demo scenario we will start an indexing process manually. In a real world scenario the data source will be either indexed on regular basis or it will be configured for real-time indexing. In the latter case a new or changed object will be indexed immediately after it has been created or changed.

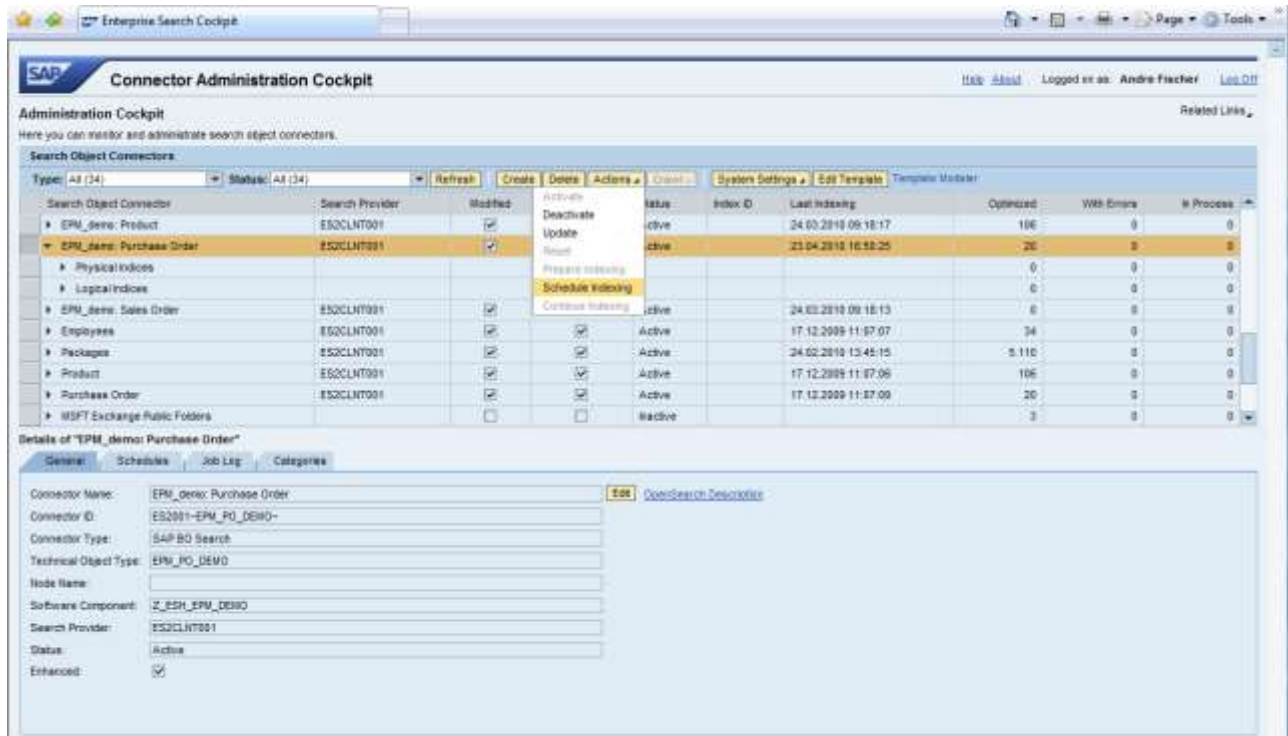


Figure 8 Start indexing of the object connector in SAP NetWeaver Enterprise Search

After the indexing process has finished we perform the same search in the Enterprise Search UI.

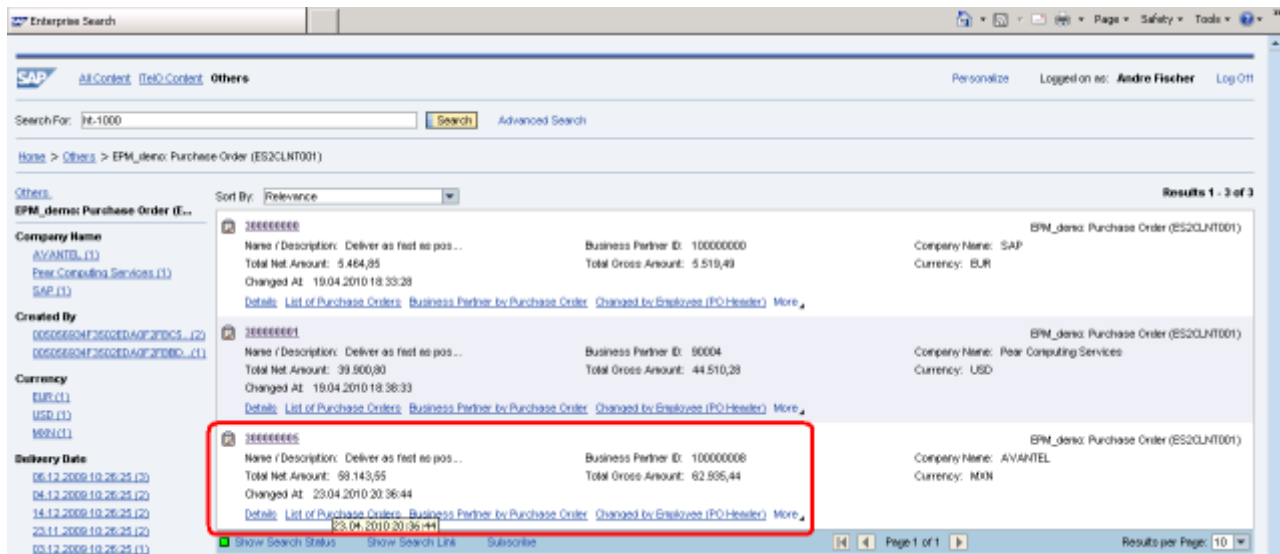


Figure 9 New search results

We can verify that the changed purchase order is found (see *Figure 9 New search results*). We now get three hits. When we start Outlook again (or if we would wait for a certain time) we will notice that the changed purchase order is also shown in Outlook as shown in *Figure 10 New search results in Outlook*.

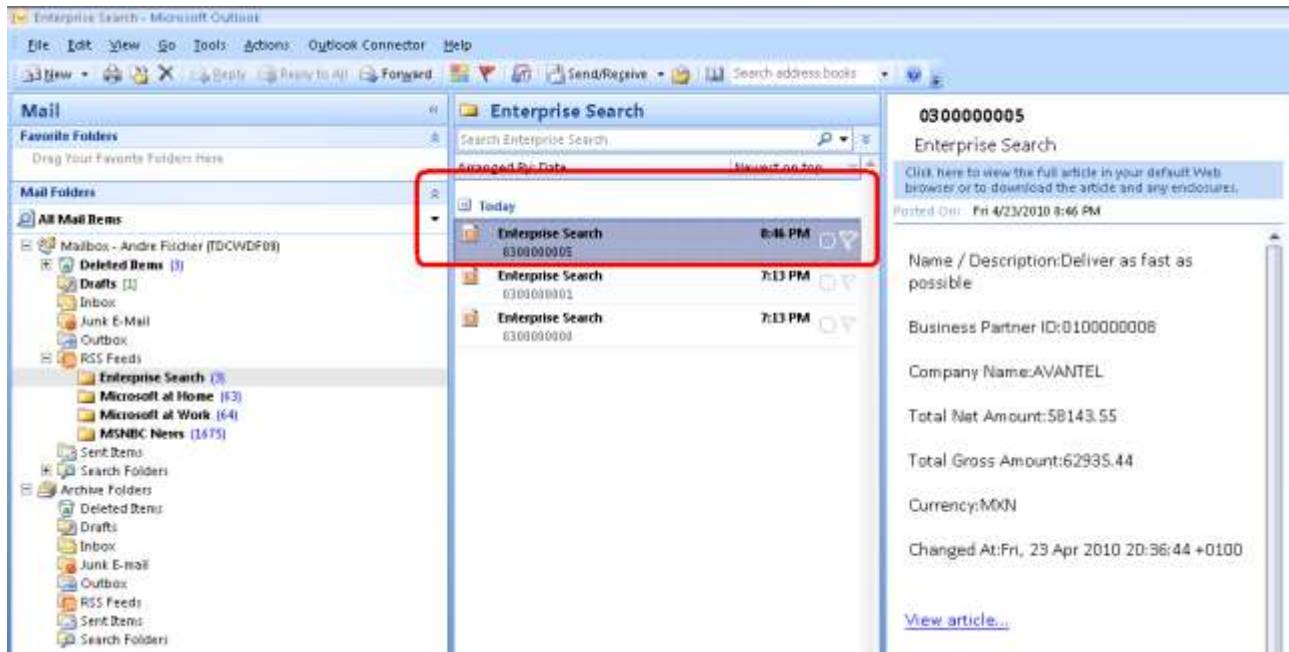


Figure 10 New search results in Outlook

Clicking on the link (View article...) will open the Web Dynpro UI that is used to change purchase orders in the Enterprise Procurement Model.

Purchase Order: 300000005, AVANTEL

Save Print Preview

Purchase Order Details

General Data

Pur. Ord. ID: 300000005
Employee Responsible: D027594

Business Partner

Bus. Part. ID: * 100000008 AVANTEL
Address: [Map](#)

Processing Data

PO Lifecycle: New
PO Approval: Initial
PO Confirmation: Initial
PO Ordering: Initial

Value

Net Amt.: 58,143,55 MXN
Tax Amt.: 4,791,89 MXN
Gross Amt.: 62,935,44 MXN

Dates

Created at: 03.11.2009 10:26:25

Items

Actions	PO Item Pos	Product ID	Product	Quantity	Qty. Unit	Gross Amt.	Currency
	1	HT-1021	High resolution 320x320 tr...	1,000	EA	1,461,26	MXN
	2	HT-1106	Complete package, 1 User,...	2,000	EA	666,88	MXN
	3	HT-1600	1.8 Ghz, dual core,512 MB...	2,000	EA	11,768,52	MXN
	4	HT-1021	High resolution 320x320 tr...	3,000	EA	4,383,77	MXN
	5	HT-1106	Complete package, 1 User,...	2,000	EA	666,88	MXN
	6	HT-1600	1.8 Ghz, dual core,512 MB...	2,000	EA	11,768,52	MXN
	7	HT-1021	High resolution 320x320 tr...	3,000	EA	4,383,77	MXN
	10	HT-1000	Notebook Basic 15 with 1,...	23,000	EA	27,835,84	EUR

Figure 11 Changed purchase order

Outlook

Instead of using Microsoft Outlook as a RSS feed reader it is also possible to consume the OpenSearch interface of SAP NetWeaver Enterprise Search as a federated search location within Microsoft Office SharePoint Server. When using SharePoint the search request is not issued from the user's client PC but from the Microsoft SharePoint Server on behalf of the user. The setup of this scenario requires some configuration steps in Microsoft Active Directory allowing the SharePoint Server to perform this impersonation which will be described in an upcoming whitepaper.

Related Content

1. Error message when you subscribe to an RSS feed that requires authentication in Outlook 2007:
"Outlook cannot download the RSS content" <http://support.microsoft.com/kb/917125>
2. Single Sign On to SAP NetWeaver Enterprise Search 7.2 Using Integrated Windows
<http://www.sdn.sap.com/irj/scn/index?rid=/library/uuid/00007511-5c0e-2d10-26bd-f30b7f433b9a>
3. SAP Developer NetWork – Search Technologies <http://www.sdn.sap.com/irj/sdn/nw-search>
4. For more information, visit the [Search homepage](#).

Copyright

© Copyright 2010 SAP AG. All rights reserved.

No part of this publication may be reproduced or transmitted in any form or for any purpose without the express permission of SAP AG. The information contained herein may be changed without prior notice.

Some software products marketed by SAP AG and its distributors contain proprietary software components of other software vendors.

Microsoft, Windows, Excel, Outlook, and PowerPoint are registered trademarks of Microsoft Corporation.

IBM, DB2, DB2 Universal Database, System i, System i5, System p, System p5, System x, System z, System z10, System z9, z10, z9, iSeries, pSeries, xSeries, zSeries, eServer, z/VM, z/OS, i5/OS, S/390, OS/390, OS/400, AS/400, S/390 Parallel Enterprise Server, PowerVM, Power Architecture, POWER6+, POWER6, POWER5+, POWER5, POWER, OpenPower, PowerPC, BatchPipes, BladeCenter, System Storage, GPFS, HACMP, RETAIN, DB2 Connect, RACF, Redbooks, OS/2, Parallel Sysplex, MVS/ESA, AIX, Intelligent Miner, WebSphere, Netfinity, Tivoli and Informix are trademarks or registered trademarks of IBM Corporation.

Linux is the registered trademark of Linus Torvalds in the U.S. and other countries.

Adobe, the Adobe logo, Acrobat, PostScript, and Reader are either trademarks or registered trademarks of Adobe Systems Incorporated in the United States and/or other countries.

Oracle is a registered trademark of Oracle Corporation.

UNIX, X/Open, OSF/1, and Motif are registered trademarks of the Open Group.

Citrix, ICA, Program Neighborhood, MetaFrame, WinFrame, VideoFrame, and MultiWin are trademarks or registered trademarks of Citrix Systems, Inc.

HTML, XML, XHTML and W3C are trademarks or registered trademarks of W3C®, World Wide Web Consortium, Massachusetts Institute of Technology.

Java is a registered trademark of Sun Microsystems, Inc.

JavaScript is a registered trademark of Sun Microsystems, Inc., used under license for technology invented and implemented by Netscape.

SAP, R/3, SAP NetWeaver, Duet, PartnerEdge, ByDesign, SAP Business ByDesign, and other SAP products and services mentioned herein as well as their respective logos are trademarks or registered trademarks of SAP AG in Germany and other countries.

Business Objects and the Business Objects logo, BusinessObjects, Crystal Reports, Crystal Decisions, Web Intelligence, Xcelsius, and other Business Objects products and services mentioned herein as well as their respective logos are trademarks or registered trademarks of Business Objects S.A. in the United States and in other countries. Business Objects is an SAP company.

All other product and service names mentioned are the trademarks of their respective companies. Data contained in this document serves informational purposes only. National product specifications may vary.

These materials are subject to change without notice. These materials are provided by SAP AG and its affiliated companies ("SAP Group") for informational purposes only, without representation or warranty of any kind, and SAP Group shall not be liable for errors or omissions with respect to the materials. The only warranties for SAP Group products and services are those that are set forth in the express warranty statements accompanying such products and services, if any. Nothing herein should be construed as constituting an additional warranty.