

How to Run a SAP MI Application on a PDA



Applies to:

This Article is applied to SAP MI technology. For more information, visit the [Mobile homepage](#).

Summary

This document describes how to install, configure SAP MI and test an SAP MI application on a PDA .

Author: Laboni Bhowmik

Company: IBM, India Pvt. Ltd

Created on: 23rd June 2008

Author Bio



Laboni Bhowmik is currently working in IBM India as a SAP Netweaver Developer.

Table of Contents

Introduction to PDA:.....	3
Prerequisites to configure PDA:	3
Installation of JVM and SAP MI client on PDA:	3
Step 1:	3
Step 2:	4
Step 3:	4
Step 4:	4
Step 5:	5
Step 6	5
Step 7:	6
Configuration of SAP MI on PDA and with IDE:	7
To run the MI application on PDA:.....	7
Step 1:	7
Step 2:	7
Related Content.....	8
Disclaimer and Liability Notice.....	9

Introduction to PDA:

A **personal digital assistant (PDA)** is a handheld computer, also known as **small** or **palmtop computers**. Now-a-days PDAs also have both color screens and audio capabilities, enabling them to be used as mobile phones (smartphones), web browsers, or portable media players. Many PDAs can access the Internet, intranets or extranets via Wi-Fi, or Wireless Wide-Area Networks (WWANs). Many PDAs employ touch screen technology.

Prerequisites to configure PDA:

1. To connect the PC with PDA one must download
setup.exe for ActiveSync4.0.
2. To install the JVM on PDA the user needs CrEme327a_AX_CE50_PPC_minimal.CAB file.
3. Actually SAP MI client offers two different UI programming models.
 - a. If the user is using Java Server Pages (JSP) model, to install SAP MI client the user needs MI25Tom_en.CAB file.
 - b. Otherwise for Abstract Windowing Toolkit (AWT) model, MI25Core_en.CAB file will be needed.

Installation of JVM and SAP MI client on PDA:

Step 1:

At first start your PDA and then connect the cradle with the PC through the USB port.



Fig: 1. PDA

Step 2:

Place the PDA on the cradle.

Step 3:

After placing the PDA on the cradle, Active Sync will automatically get started.

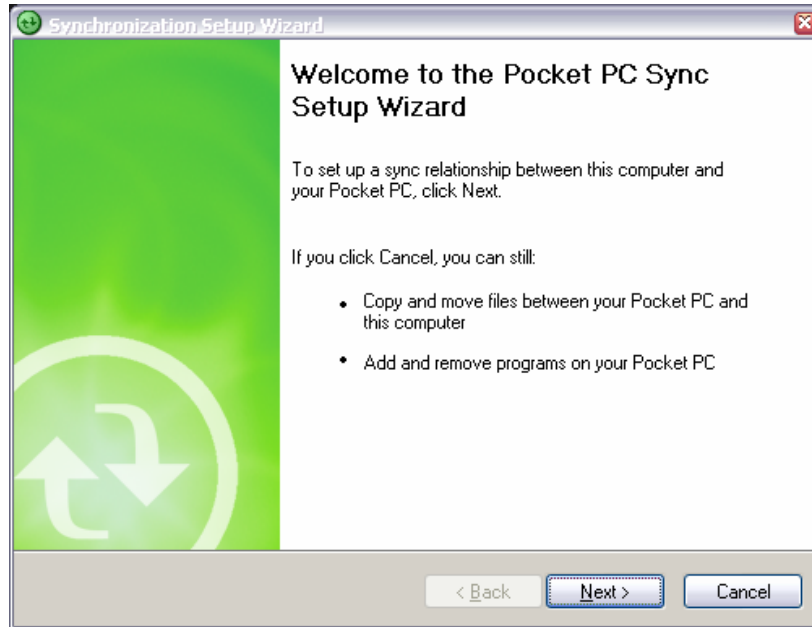


Fig: 2. Active Sync.

Step 4:

Please check the box (as shown in the figure below) which one you want to get synchronized and then click on the next button.

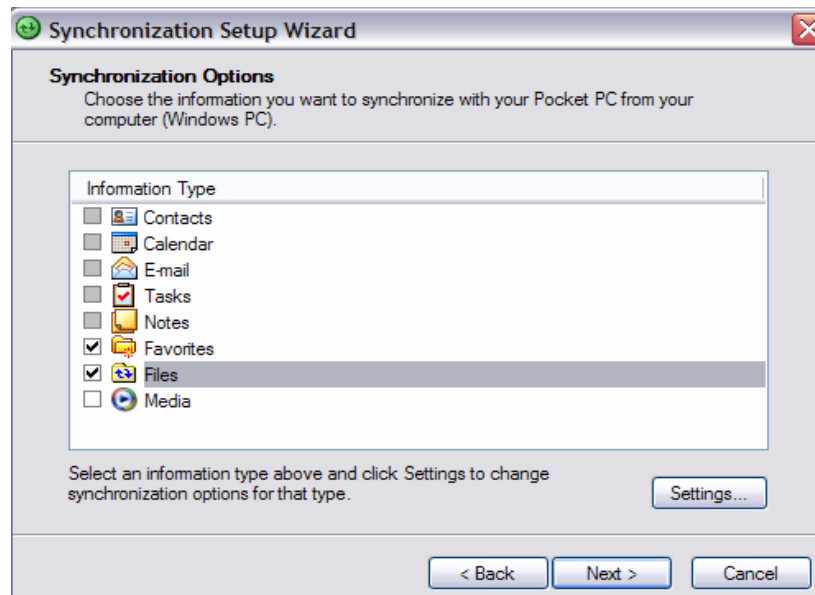


Fig: 3.Synchronizatioon option

Step 5:

Then click on the finish button and a shared folder will get created on your desktop.



Fig 4: A synchronized folder is getting created.

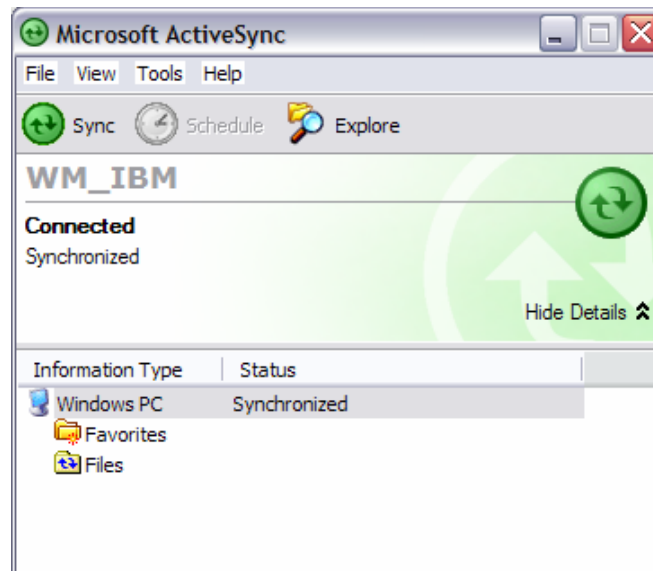


Fig: 5.PDA got connected with the PC.

Step 6:

Put the CrEme327a_AX_CE50_PPC_minimal.CAB file in the shared folder and then on the completion of the synchronization, access this file via file explorer of the device and install the JVM on the PDA (SAP recommends the use of the CrEme JVM. This file is available (free) as a part of the SAP MI installation bundle).



Fig: 6. install from the file explorer of the PDA

Step 7:

In the same way, install the .cab (according to your requirement) for SAP MI client.

Now if you go to the start menu, you will find the installed SAP MI client in the PDA.

Configuration of SAP MI on PDA and with IDE:

For configuring the MI client on PDA please visit

<https://www.sdn.sap.com/irj/sdn/go/portal/prtroot/docs/library/uuid/60447dc8-19f4-2a10-f59d-89df20686df9>

The steps for configuration and setting are as same as desktop or laptop.

To run the MI application on PDA:

Step 1:

Now log into the MI client, installed in the PDA.



Fig 7: Log into the MI client of the PDA.

Step 2:

Now run the MI client from the PDA login into it and the application name will be displayed on the home page, click on that to run the application.

Related Content

Please find the installation and configuration details of SAP MI Client in the desktop in the following link.

- <https://www.sdn.sap.com/irj/sdn/go/portal/prtroot/docs/library/uuid/60447dc8-19f4-2a10-f59d-89df20686df9>
- http://www.sap-press.de/download/dateien/1348/sappress_developing_mobile_applications.pdf
- <https://www.sdn.sap.com/irj/sdn/nw-mobile?rid=/webcontent/uuid/20d4fa93-6560-2a10-2eaf-bae62250d6f5>

Disclaimer and Liability Notice

This document may discuss sample coding or other information that does not include SAP official interfaces and therefore is not supported by SAP. Changes made based on this information are not supported and can be overwritten during an upgrade.

SAP will not be held liable for any damages caused by using or misusing the information, code or methods suggested in this document, and anyone using these methods does so at his/her own risk.

SAP offers no guarantees and assumes no responsibility or liability of any type with respect to the content of this technical article or code sample, including any liability resulting from incompatibility between the content within this document and the materials and services offered by SAP. You agree that you will not hold, or seek to hold, SAP responsible or liable with respect to the content of this document.