

# Planning in SAP NetWeaver BI

## Decision Support

**The information contained herein reflects current planning and  
may be changed without prior notice**

**Product Management SAPNetWeaver BI**

# Clarification about Releases/Terminology

**SAP SEM** is an Add-On on top of **SAP BW**

**SAP SEM** and **SAP BW** have different release cycles and release names

**SAP SEM 3.1B** is based on a **SAP BW 3.0B** system

**SAP SEM 3.2** can be based on **SAP BW 3.1 Content, BI Content 3.2, BI Content 3.3**

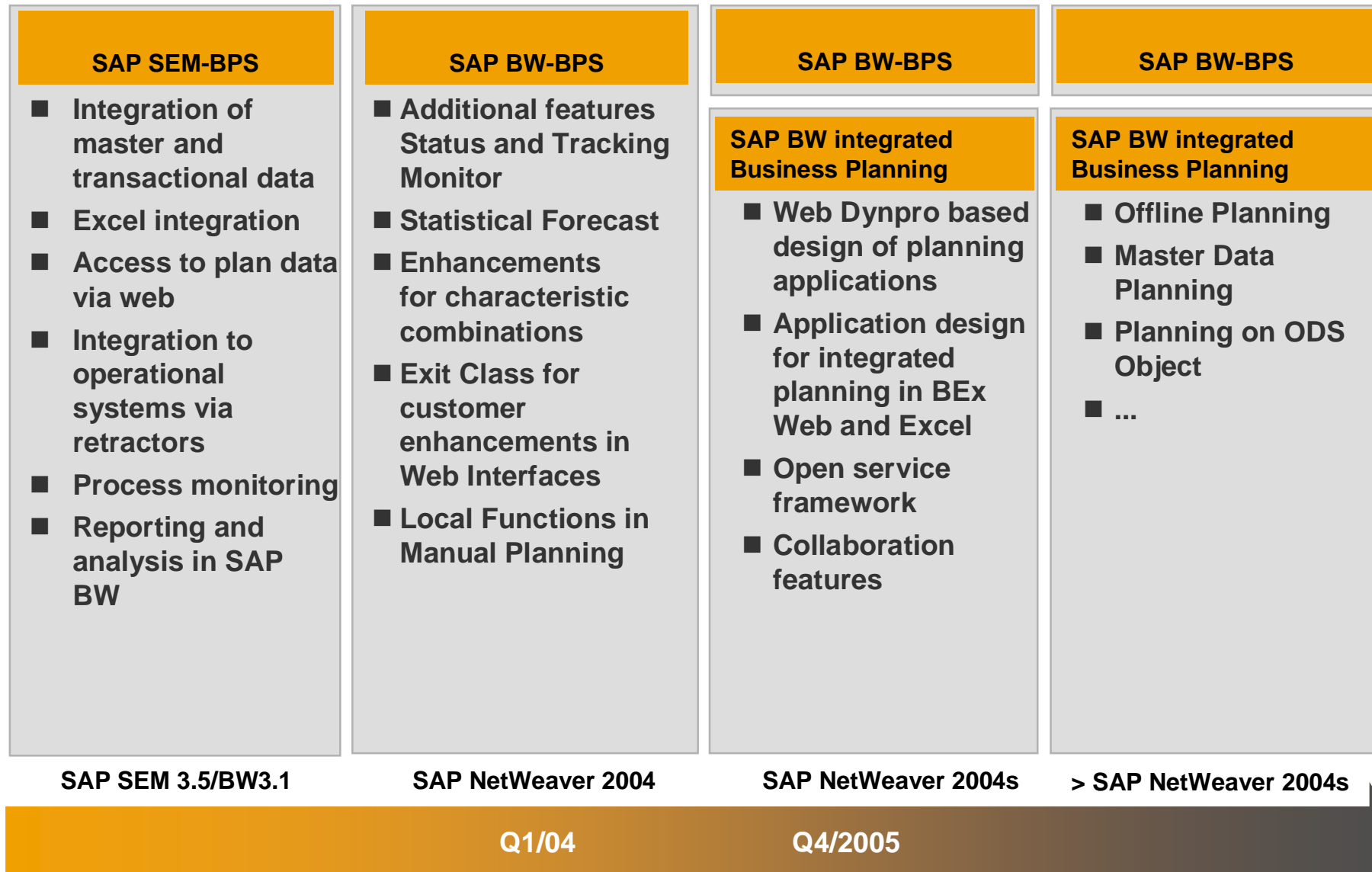
**SAP SEM 3.5** can be based on **SAP BW 3.1 Content, BI Content 3.2, BI Content 3.3**

**SAP SEM 4.0** is based on a **SAP BW 3.5** system

**SAP BW 3.5** is a component of **SAP NetWeaver 2004**

**SAP NetWeaver 2004s, BI capability** will be the next release of **SAP BI**.

# Roadmap SAP Business Planning



# **This document is focused on the choices available when implementing **planning functionality**.**

The slides contain recommendations to help customers decide what combination of SAP BW and/or SEM applications to install when they are interested in using **planning functionality** in the context of SAP BI.

The different options presented describe the options available depending on whether customers want to implement just the **planning functionality** or if they plan to use other SEM key capabilities such as **Consolidations** or **Corporate Performance Management**.

**Please consider the option that applies to your current implementation plans.**

## Planning functionality

Core planning capabilities are delivered either with SEM-BPS up to SAP BW 3.5 or BW-BPS (planning workbench, generic planning functions, manual planning, status and tracking system, retractors) starting with SAP BW 3.5

## Other SEM capabilities

- SEM-CPM: e.g. Balanced Scorecard, Management Cockpit, Measure Builder
- SEM-BCS: Business Consolidation
- SEM-BPS: Financial planning content (balance sheet planning, cost center planning,...) and business specific planning functions (allocation, amortization, depreciation, time lag, offsetting entry, account based currency conversion, rounding, net present value, internal rate of return, calculate inventory, valuation)

## Note:

- BW-BPS will include full capabilities necessary to implement financial planning, too.
- SEM-BP will be content and business specific planning functions for financial planning applications based and built upon BW-BPS.

## Content

The content of all other planning applications besides financial planning content will be delivered with SAP BW content starting with SAP BW 3.5

# Strategic Enterprise Management as of SEM 3.5/BW 3.1

## Business Solution

**Stakeholder  
Relationship  
Management**

Contact Management,  
Stakeholder Service

**Strategy  
Management**

Strategy Planning

**Performance  
Measurement**

**Business  
Consolidation**

Legal & Mgmt Cons.,  
GAAP Adjustments,  
Currency Translation,  
Inter-unit Eliminations

**Business  
Planning**

Profitability Planning,  
Cost Center Planning,  
Investment Planning  
Financial Statement Pl.

## Technology

**SEM-SRM**

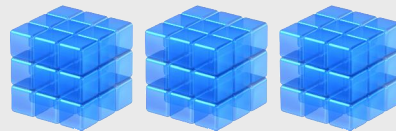
**SEM-CPM**

**SEM-BCS**

**SEM-BPS**

## **SAP BW**

- OLAP & Analysis
- Business Modelling
- Data Management



# SAP SEM – SAP BW starting with SAP BW 3.5

## Business Solution

**Stakeholder Relationship Management**

Contact Management, Stakeholder Service

**Strategy Management**

Strategy Planning

**Performance Measurement**

**Business Consolidation**

Legal & Mgmt Cons., GAAP Adjustments, Currency Translation, Inter-unit Eliminations

**Business Planning**

Profitability Planning, Cost Center Planning, Investment Planning, Financial Statement PI Express Planning.

## Technology

**SEM-SRM**

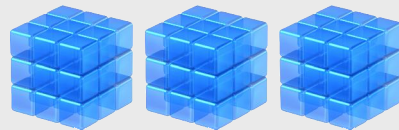
**SEM-CPM**

**SEM-BCS**

## SAP NetWeaver

### SAP BW

- OLAP & Analysis
- Business Modelling
- Data Management



- Modelling
- Generic Planning Framework
- Process Coordination

**BW-BPS**

## Possible Implementation Scenarios

- **Implementation 2005**
- **Upgrade 2005**
- **Implementation 2006**



## Implementation 2005

Planning only	Planning <u>and</u> SEM key capabilities
<b>2005</b>	<b>2005</b>
<ul style="list-style-type: none"> <li>■ Install SAP BW 3.5 (incl. BW-BPS)</li> <li>■ No SEM Add-On necessary</li> </ul>	<ul style="list-style-type: none"> <li>■ Install SAP BW 3.5 (incl. BW-BPS)</li> <li>■ Install SEM 4.0</li> </ul>
<b>Q1 2006</b>	
<ul style="list-style-type: none"> <li>■ Upgrade to SAP NetWeaver 2004s (incl. SAP BI-integrated planning and <u>BW-BPS</u>)</li> </ul>	<ul style="list-style-type: none"> <li>■ Upgrade to SAP NetWeaver 2004s (incl. SAP BI-integrated planning and <u>BW-BPS</u>)</li> <li>■ Upgrade to SEM 6.0</li> </ul>
<ul style="list-style-type: none"> <li>■ <b>Migration to SAP BI-integrated planning with upgrade to SAP NetWeaver 2004s is not a must!</b></li> <li>■ Implemented BW-BPS scenarios still work</li> </ul>	

### Planning only/Planning and other SAP SEM key capabilities

#### 2004

- Install SAP SEM 3.5/SAP BW 3.1 (Planning functionality SEM-BPS)

#### 2005

- Upgrade to SAP BW 3.5 (Planning functionality BW-BPS)
- Upgrade to SAP SEM 4.0

Note: Also if you use only the planning capability, you need to upgrade the SEM Add-on.

- No migration necessary

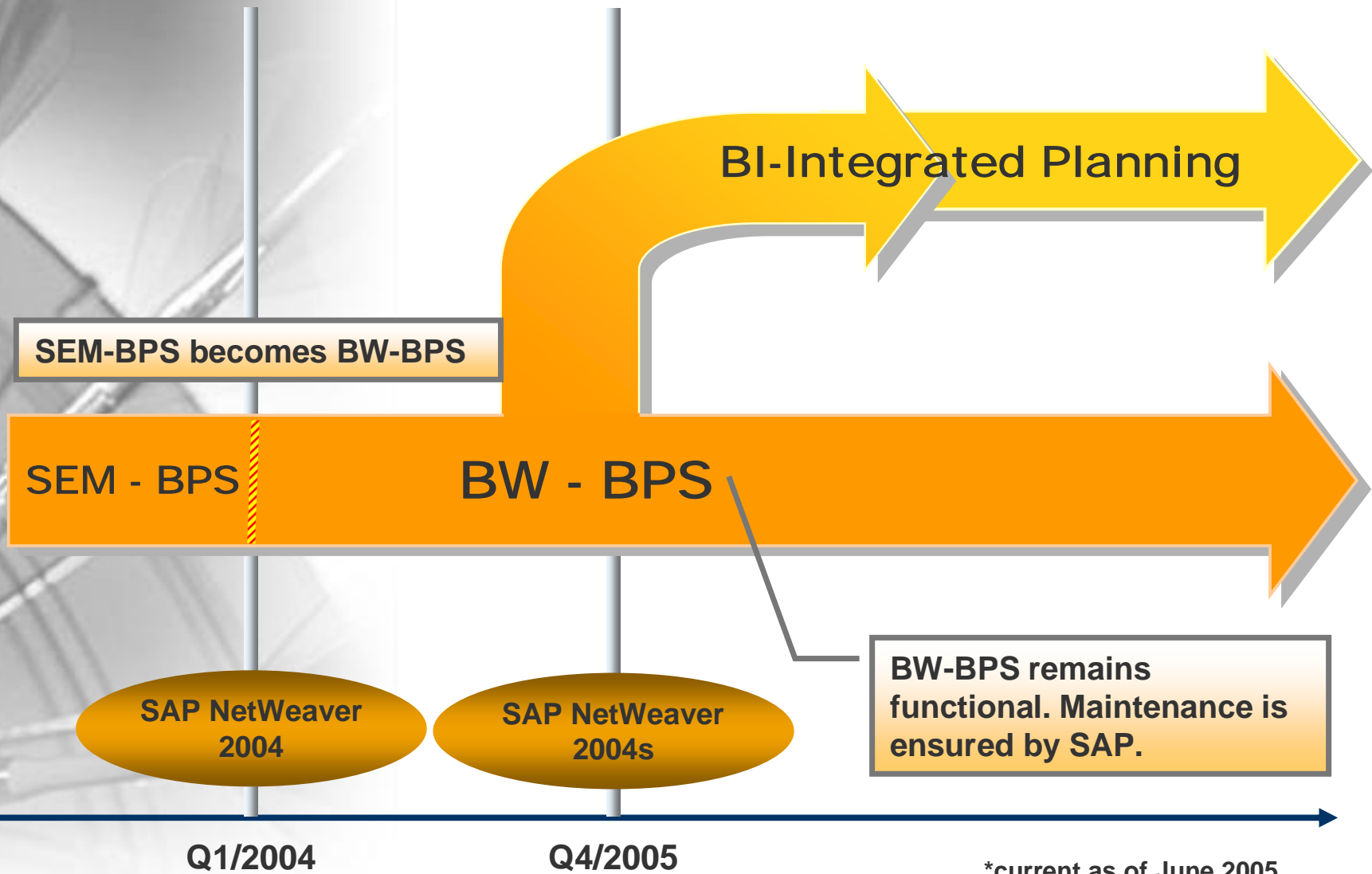
#### 2006

- Upgrade to SAP Netweaver 2004s (incl. SAP BI-integrated planning and BW-BPS)
- Upgrade to SEM 6.0
- **Migration to fully SAP BI-integrated planning with upgrade to SAP Netweaver 2004 is not a must!**
- Implemented BW-BPS scenarios still work

## Implementation 2006

Planning only	Planning and SEM key capabilities
2006	2006
<ul style="list-style-type: none"><li>■ Install SAP Netweaver 2004s (incl. SAP BI-integrated planning)</li><li>■ Use SAP BI-integrated planning</li></ul>	<ul style="list-style-type: none"><li>■ Install SAP NetWeaver 2004s (incl. SAP BI-integrated planning)</li><li>■ Use SAP BI-integrated planning</li><li>■ Install SEM 6.0 for other SEM key capabilities</li></ul>

# Business Planning with SAP NetWeaver – Strategy\*



## How does SAP secure customer investments in BW-BPS?

- **Customers will not be forced to migrate. All scenarios created with SAP BW-BPS\* will still run, when SAP BW integrated planning was delivered.**
- **SAP BW-BPS will be delivered and maintained with SAP BW releases equal or higher than SAP NetWeaver 2004.**
- **Planning scenarios built with SAP BW-BPS can coexist and integrate with planning scenarios built with SAP BI-integrated planning.**
- **Apart from this fact, SAP will offer a migration path for the move from SAP BW-BPS to SAP BI-integrated planning if needed**
  - ◆ **No data migration necessary. SAP BI-integrated planning can use the same transactional InfoCubes as BW-BPS.**
  - ◆ **The critical and time consuming part for modeling the planning application (characteristics, key figures, authorizations, locking concept, ...) can be reused in SAP BI-integrated planning.**
  - ◆ **More frontend related objects like planning layouts, web interfaces etc. have to be rebuilt manually**
- **\* applies for SAP SEM-BPS, too**

No part of this publication may be reproduced or transmitted in any form or for any purpose without the express permission of SAP AG. The information contained herein may be changed without prior notice.

Some software products marketed by SAP AG and its distributors contain proprietary software components of other software vendors.

Microsoft, Windows, Outlook, and PowerPoint are registered trademarks of Microsoft Corporation.

IBM, DB2, DB2 Universal Database, OS/2, Parallel Sysplex, MVS/ESA, AIX, S/390, AS/400, OS/390, OS/400, iSeries, pSeries, xSeries, zSeries, z/OS, AFP, Intelligent Miner, WebSphere, Netfinity, Tivoli, and Informix are trademarks or registered trademarks of IBM Corporation in the United States and/or other countries.

Oracle is a registered trademark of Oracle Corporation.

UNIX, X/Open, OSF/1, and Motif are registered trademarks of the Open Group.

Citrix, ICA, Program Neighborhood, MetaFrame, WinFrame, VideoFrame, and MultiWin are trademarks or registered trademarks of Citrix Systems, Inc.

HTML, XML, XHTML and W3C are trademarks or registered trademarks of W3C®, World Wide Web Consortium, Massachusetts Institute of Technology.

Java is a registered trademark of Sun Microsystems, Inc.

JavaScript is a registered trademark of Sun Microsystems, Inc., used under license for technology invented and implemented by Netscape.

MaxDB is a trademark of MySQL AB, Sweden.

SAP, R/3, mySAP, mySAP.com, xApps, xApp, SAP NetWeaver and other SAP products and services mentioned herein as well as their respective logos are trademarks or registered trademarks of SAP AG in Germany and in several other countries all over the world. All other product and service names mentioned are the trademarks of their respective companies. Data contained in this document serves informational purposes only. National product specifications may vary.

These materials are subject to change without notice. These materials are provided by SAP AG and its affiliated companies ("SAP Group") for informational purposes only, without representation or warranty of any kind, and SAP Group shall not be liable for errors or omissions with respect to the materials. The only warranties for SAP Group products and services are those that are set forth in the express warranty statements accompanying such products and services, if any. Nothing herein should be construed as constituting an additional warranty.