

# SAP NetWeaver How-To Guide



## SAP NetWeaver Gateway Virtualization Guide

**Version 1.0**  
**Sept 2011**



**HOW-TO GUIDE**

THE BEST-RUN BUSINESSES RUN SAP™



© Copyright 2013 SAP AG. All rights reserved.

No part of this publication may be reproduced or transmitted in any form or for any purpose without the express permission of SAP AG. The information contained herein may be changed without prior notice.

Some software products marketed by SAP AG and its distributors contain proprietary software components of other software vendors.

Microsoft, Windows, Outlook, and PowerPoint are registered trademarks of Microsoft Corporation.

IBM, DB2, DB2 Universal Database, OS/2, Parallel Sysplex, MVS/ESA, AIX, S/390, AS/400, OS/390, OS/400, iSeries, pSeries, xSeries, zSeries, z/OS, AFP, Intelligent Miner, WebSphere, Netfinity, Tivoli, Informix, i5/OS, POWER, POWER5, OpenPower and PowerPC are trademarks or registered trademarks of IBM Corporation.

Adobe, the Adobe logo, Acrobat, PostScript, and Reader are either trademarks or registered trademarks of Adobe Systems Incorporated in the United States and/or other countries.

Oracle is a registered trademark of Oracle Corporation.

UNIX, X/Open, OSF/1, and Motif are registered trademarks of the Open Group.

Citrix, ICA, Program Neighborhood, MetaFrame, WinFrame, VideoFrame, and MultiWin are trademarks or registered trademarks of Citrix Systems, Inc.

HTML, XML, XHTML and W3C are trademarks or registered trademarks of W3C®, World Wide Web Consortium, Massachusetts Institute of Technology.

Java is a registered trademark of Sun Microsystems, Inc.

JavaScript is a registered trademark of Sun Microsystems, Inc., used under license for technology invented and implemented by Netscape.

MaxDB is a trademark of MySQL AB, Sweden.

SAP, R/3, mySAP, mySAP.com, xApps, xApp, SAP NetWeaver, and other SAP products and services mentioned herein as well as their respective logos are trademarks or registered trademarks of SAP AG in Germany and in several other countries all over the world. All other product and service names mentioned are the trademarks of their respective companies. Data contained in this document serves informational purposes only. National product specifications may vary.

These materials are subject to change without notice.

These materials are provided by SAP AG and its affiliated companies ("SAP Group") for informational purposes only, without representation or warranty of any kind, and SAP Group shall not be liable for errors or omissions with respect to the materials. The only warranties for SAP Group products and services are those that are set forth in the express warranty statements accompanying such products and services, if any. Nothing herein should be construed as constituting an additional warranty.

These materials are provided "as is" without a warranty of any kind, either express or implied, including but not limited to, the implied warranties of merchantability, fitness for a particular purpose, or non-infringement.

SAP shall not be liable for damages of any kind including without limitation direct, special, indirect, or consequential damages that may result from the use of these materials.

SAP does not warrant the accuracy or completeness of the information, text, graphics, links or other items contained within these materials. SAP has no control over the information that you may access through the use of hot links contained in these materials and does not endorse your use of third party web pages nor provide any warranty whatsoever relating to third party web pages.

SAP NetWeaver "How-to" Guides are intended to simplify the product implementation. While specific product features and procedures typically are explained in a practical business context, it is not implied that those features and procedures are the only approach in solving a specific business problem using SAP NetWeaver. Should you wish to receive additional information, clarification or support, please refer to SAP Consulting.

Any software coding and/or code lines / strings ("Code") included in this documentation are only examples and are not intended to be used in a productive system environment. The Code is only intended better explain and visualize the syntax and phrasing rules of certain coding. SAP does not warrant the correctness and completeness of the Code given herein, and SAP shall not be liable for errors or damages caused by the usage of the Code, except if such damages were caused by SAP intentionally or grossly negligent.

Disclaimer

Some components of this product are based on Java™. Any code change in these components may cause unpredictable and severe malfunctions and is therefore expressly prohibited, as is any decompilation of these components.

Any Java™ Source Code delivered with this product is only to be used by SAP's Support Services and may not be modified or altered in any way.





## Document History

Document Version	Description
1.00	First official release of this guide

## Typographic Conventions

Type Style	Description
<i>Example Text</i>	Words or characters quoted from the screen. These include field names, screen titles, pushbuttons labels, menu names, menu paths, and menu options. Cross-references to other documentation
<b>Example text</b>	Emphasized words or phrases in body text, graphic titles, and table titles
Example text	File and directory names and their paths, messages, names of variables and parameters, source text, and names of installation, upgrade and database tools.
<b>Example text</b>	User entry texts. These are words or characters that you enter in the system exactly as they appear in the documentation.
<b>&lt;Example text&gt;</b>	Variable user entry. Angle brackets indicate that you replace these words and characters with appropriate entries to make entries in the system.
EXAMPLE TEXT	Keys on the keyboard, for example, F2 or ENTER.

## Icons

Icon	Description
	Caution
	Note or Important
	Example
	Recommendation or Tip

**Table of Contents**

- 1. Prerequisites.....1
- 2. SAP NetWeaver Gateway on VMWare .....2
- 3. Install SAP NetWeaver Gateway .....2
- 4. Warning.....13

## 1. Prerequisites

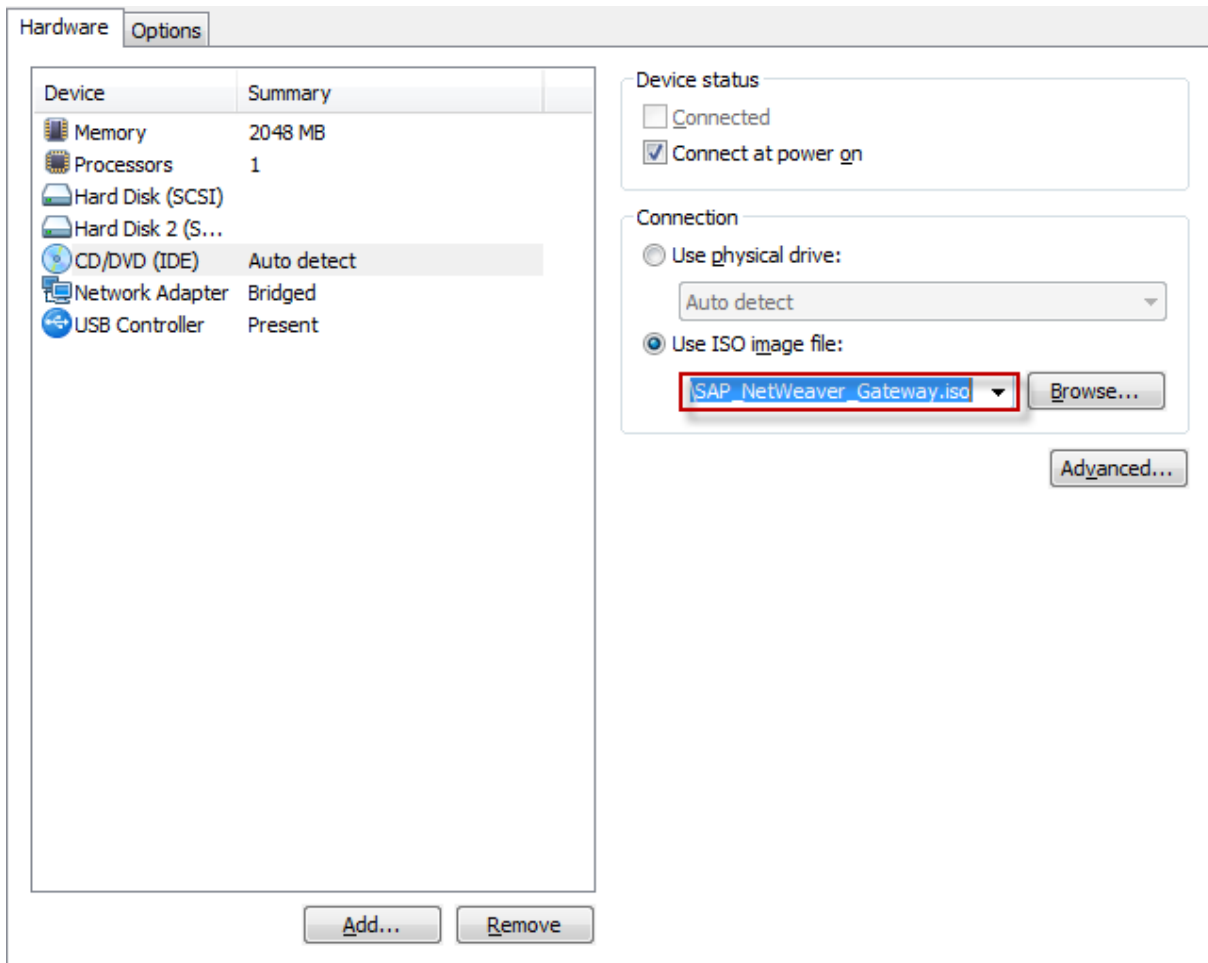
- Hardware requirements:  
Recent 64-bit Intel or AMD CPU with support for virtualization, for example, Intel(R) Core(TM) i5 CPU M 540 @2.53GHz 2.53Ghz,  
Memory: Minimum 4GB when running both ABAP and J2EE stack. 2GB when only running ABAP.
- Software requirements:  
Operating system capable of running one of the following:
  - VM workstation version: 8 or greater
  - VMWare ESX version: 5 or greater
  - VMPlayer version: 5
  - VMware Fusion 4 or greater
    - VMWare Player can be downloaded for free here:
    - <http://www.vmware.com/download/player/download.html>

## 2. SAP NetWeaver Gateway on VMWare

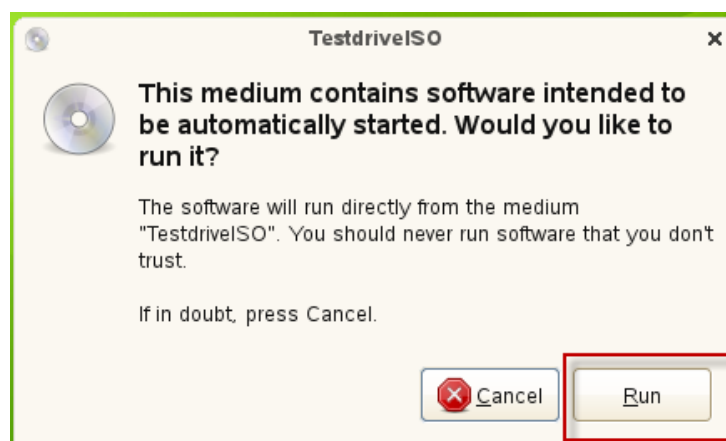
1. Download the Fedora virtual image from: <http://sapnetweavergatewayonfedora.fedorapeople.org>
2. Unpack SAP NW Gateway Bundle on Fedora18 64-bit.zip to create a directory called SAP NW Gateway Bundle on Fedora18 64-bit.vmwarevm.
3. Then import the "Virtual Disk.vmdk" into your VMWare application. This virtual machine is compatible with VMWare Workstation 8 or greater, ESX 5 or greater, or the VMWare Player which can be downloaded for free here:  
<http://www.vmware.com/download/player/download.html>.
4. Start the Fedora virtual machine.
5. Log on using the user "testdrive" and password "redhat". The root password is also "redhat".

## 3. Install SAP NetWeaver Gateway

1. Once you have logged on with the **testdrive** user, go to the virtual machine settings and add the Gateway.iso and click OK (see diagram below)

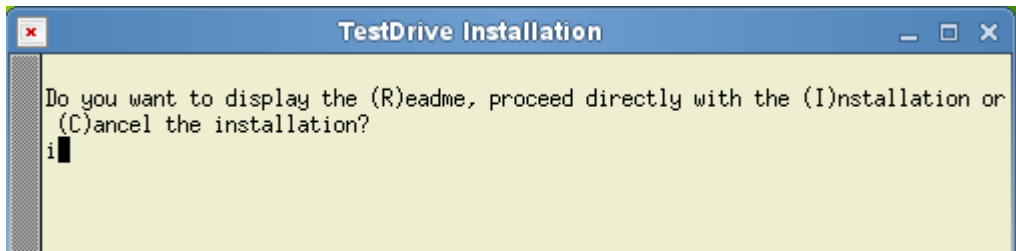


2. A dialog box is displayed on the Linux machine, click Run. (See diagram below)



3. Continue installation by typing `i.` (See diagram below)

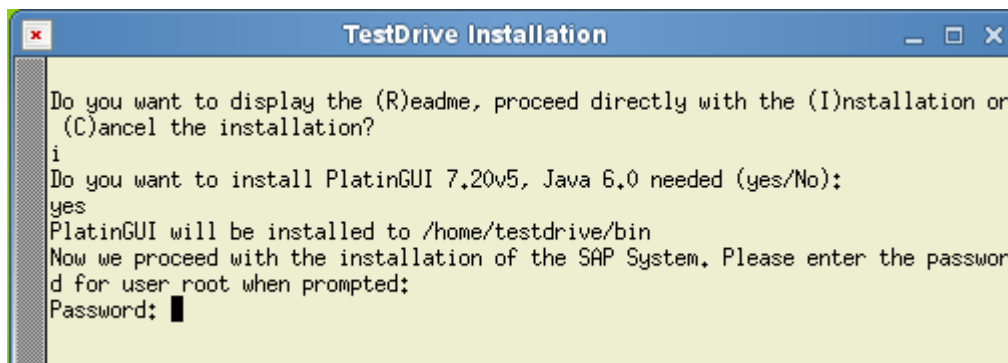




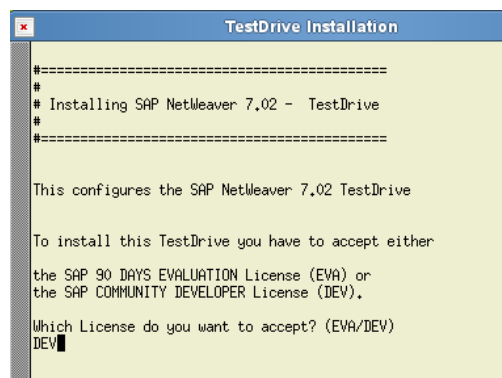
4. If you do not have SAP GUI installed on your local machine, you can install it on the virtual machine. (See diagram below)



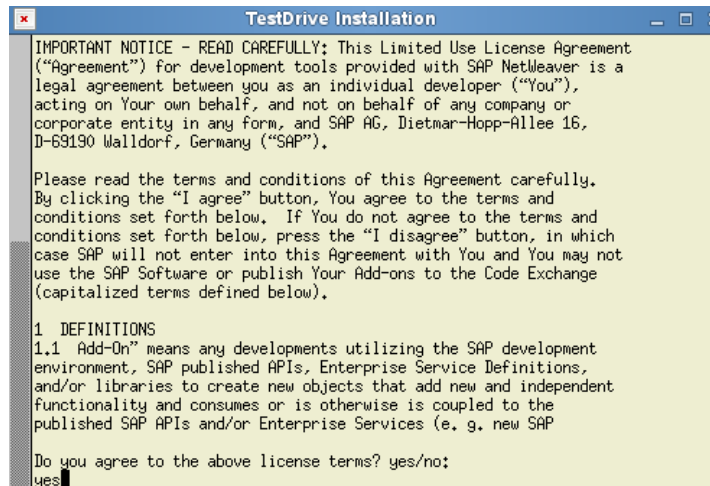
5. Enter the password for the root user: **saptestdrive** (see diagram below)



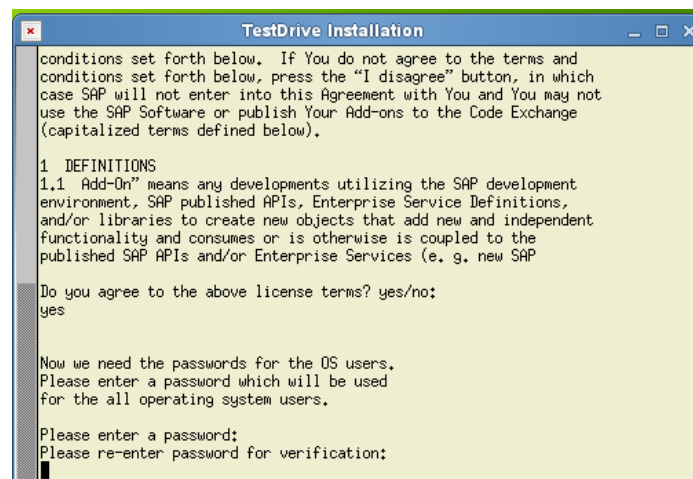
6. In next steps you will be asked to enter which license you want to READ/ Accept, either one is valid for 90 days.



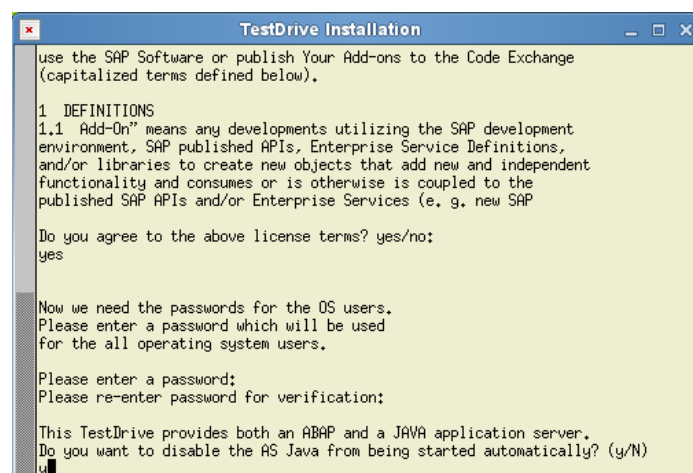
7. Accept the license.



8. The installation creates the necessary SAP Linux users. You define the password for them in the next step.



9. SAP NetWeaver Gateway does not require the SAP application server to run, so you do not need to start it



```
TestDrive Installation

Now we need the passwords for the OS users.
Please enter a password which will be used
for the all operating system users.

Please enter a password:
Please re-enter password for verification:

This TestDrive provides both an ABAP and a JAVA application server.
Do you want to disable the AS Java from being started automatically? (y/N)
y

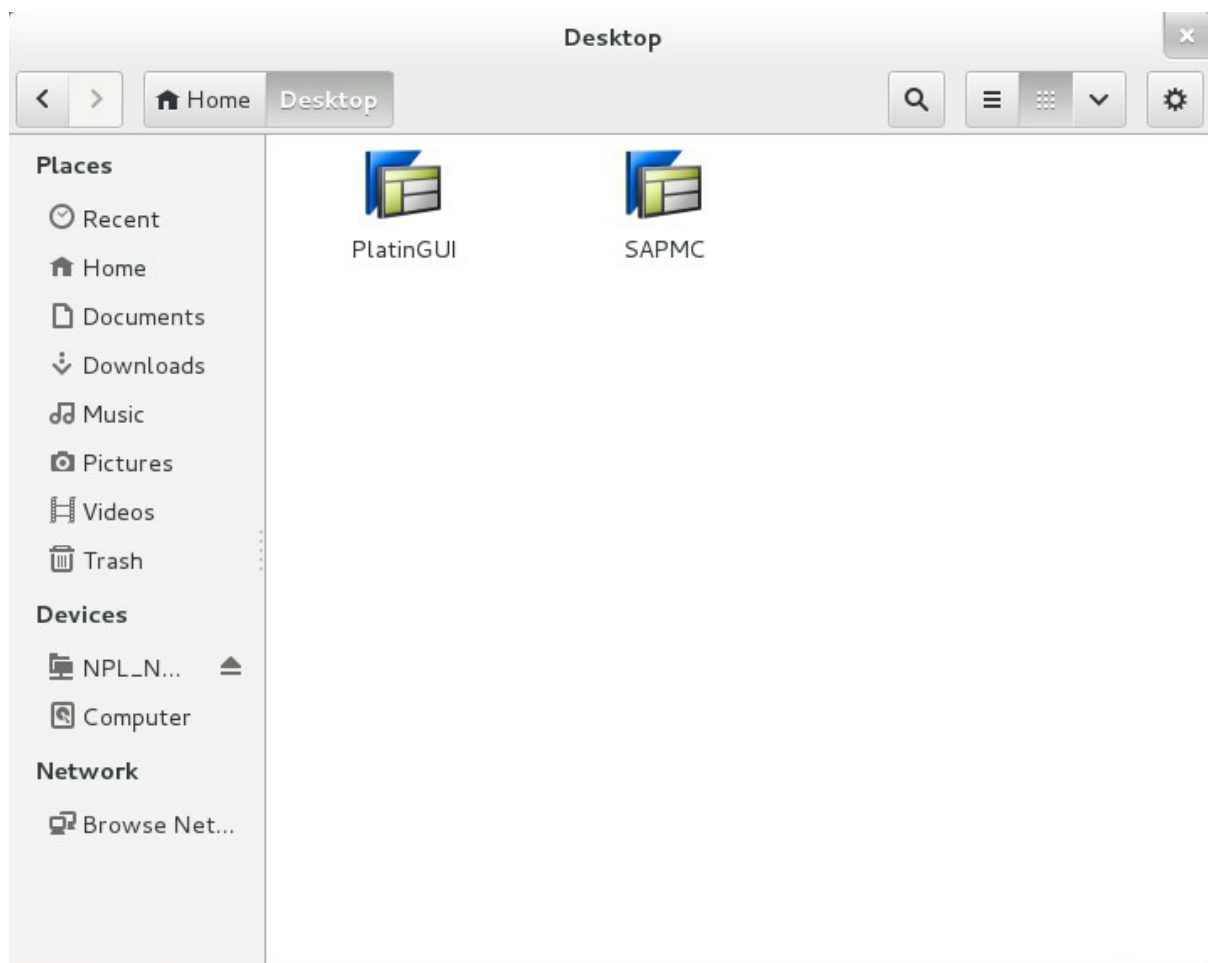
Now we begin with the installation.
Be patient, this will take a while ...

creating user npladm
creating user sdb
creating user sqdnp1
creating user sapadm

extracting data archives...
extracting /media/NPL_NW702_2011_07_28/server/TAR/x86_64/npladm_env.tgz
extracting /media/NPL_NW702_2011_07_28/server/TAR/x86_64/MaxDB.tgz
```

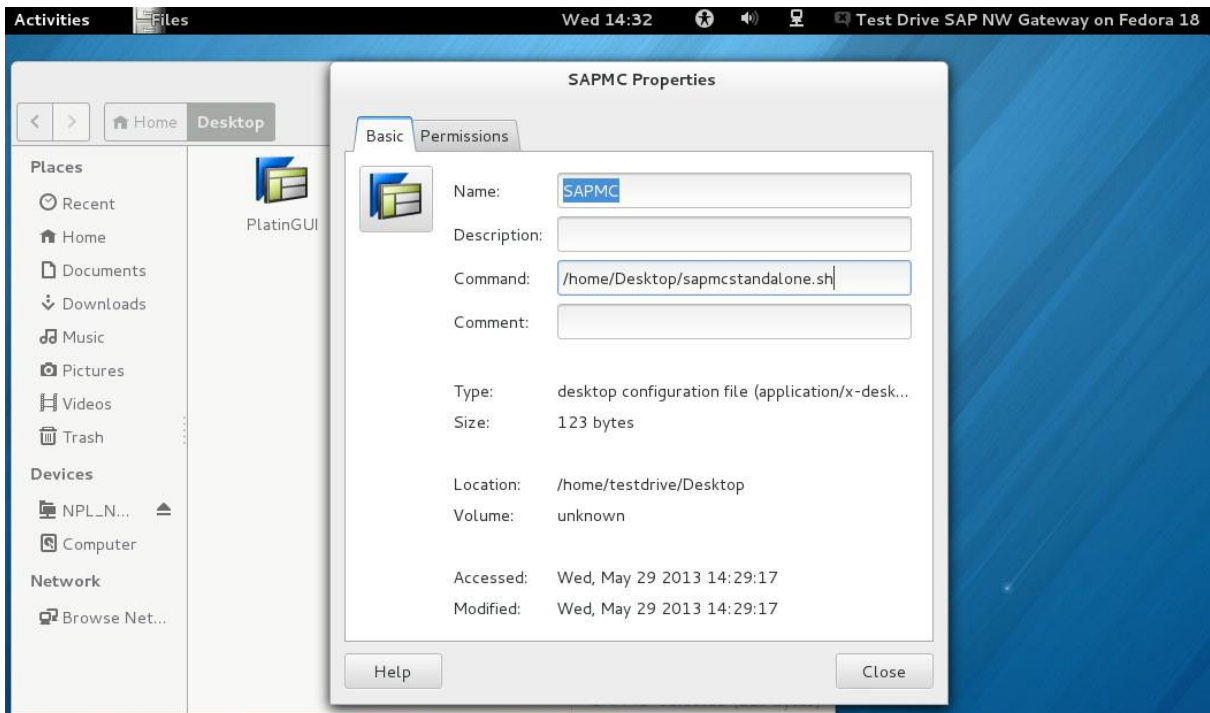
10. The installation should take 15-25 minutes to complete..

11. There will be two application shortcuts installed to /home/Desktop

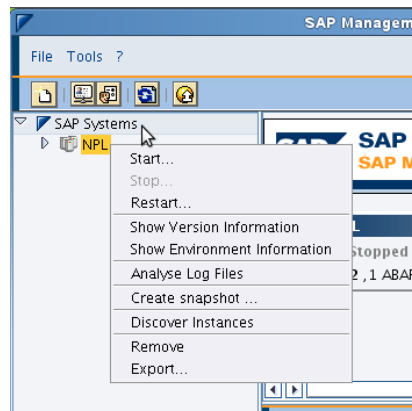


12. You will need to update the location of the Command path in SAPMC to /home/Desktop/sapmctandalone.sh. You can do this by right-clicking on the SAPMC icon and

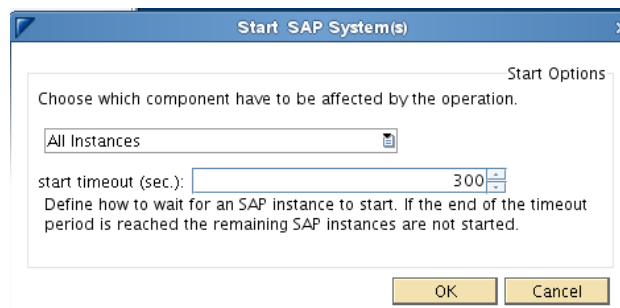
selecting Properties. That will bring you to the screen below



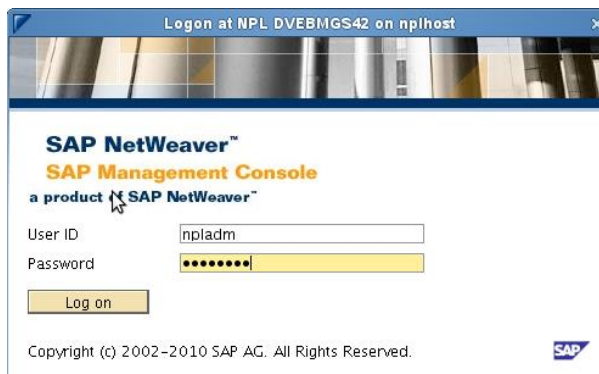
13. To start SAP: Double click on the SAPMC in order to start SAP. Once started, Right-click on NPL and choose the “Start” option



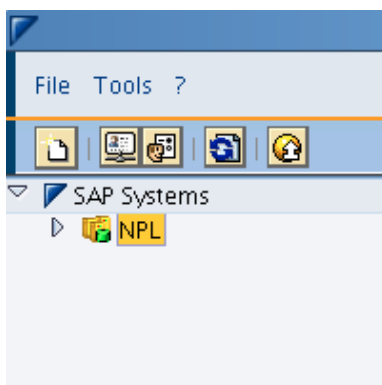
14. Click OK



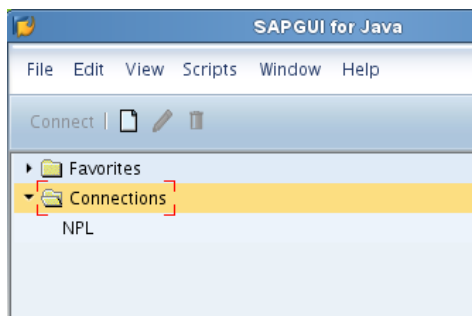
15. On the next screen enter user `npladm` that was created during setup, and use the password that you were prompted to create.



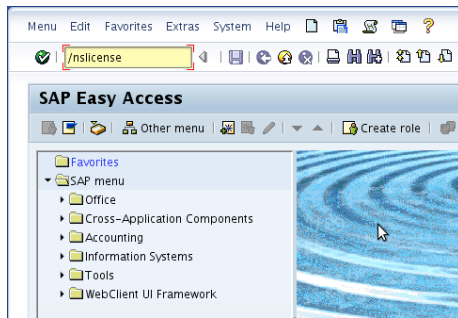
16. Once NPL is green, you can start the SAP GUI. You can either minimize or close the SAP MMC.



17. Double-click the PlatinGUI icon to launch SAPLogin and expand the “Connection” hierarchy to display NPL.



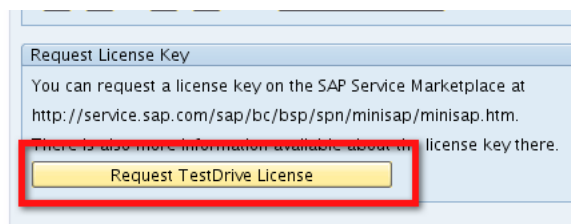
- 18. Select the NPL connection and press the highlighted Connect button.
- 19. Log onto Client “000” with userid **SAP\*** and password **ch4ngeme**
- 20. Go to transaction **/nslicense**.



21. Write down the Active Hardware Key (This will be unique to your system):



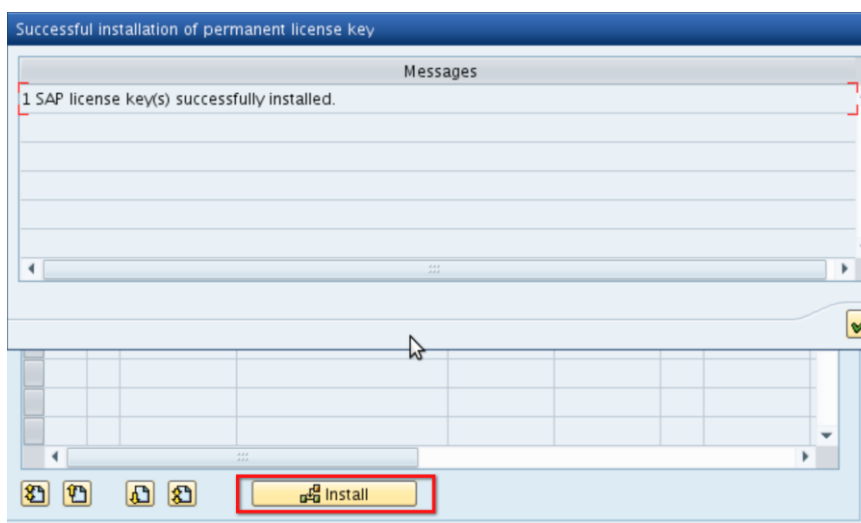
23. At the bottom of the screen, select the “Request TestDrive License” button.



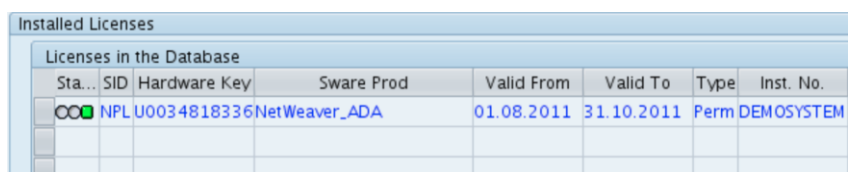
24. Enter the appropriate information making sure you agree to the License agreement. The system ID is NPL – SAP NetWeaver 7.02 (MaxDB) and the Hardwarekey is from the SAP license screen.

Salutation *	<input checked="" type="radio"/> Mr. <input type="radio"/> Ms.
First name *	<input type="text"/>
Last name *	<input type="text"/>
Email *	<input type="text"/>
Company	<input type="text"/>
SDN User id *	<input type="text"/>
<b>License Agreement</b>	
I agree *	<input checked="" type="checkbox"/> <a href="#">View agreement</a>
<b>System Info</b>	
System ID *	NPL - SAP NetWeaver 7.02 (MaxDB)
Hardware key (HWID) *	U0034818336
* Marked fields are required	
<input type="button" value="Submit"/>	<input type="button" value="Cancel"/>

25. After you have received the license key by email, you can download to the desktop and click the install button on the SAP GUI to install the temporary license.



26. Click OK and you should have successfully installed a temporary license.



The screenshot shows a table titled "Installed Licenses" with the following data:

Sta...	SID	Hardware Key	Sware Prod	Valid From	Valid To	Type	Inst. No.
000	NPL	U0034818336	NetWeaver_ADA	01.08.2011	31.10.2011	Perm	DEMOSYSTEM

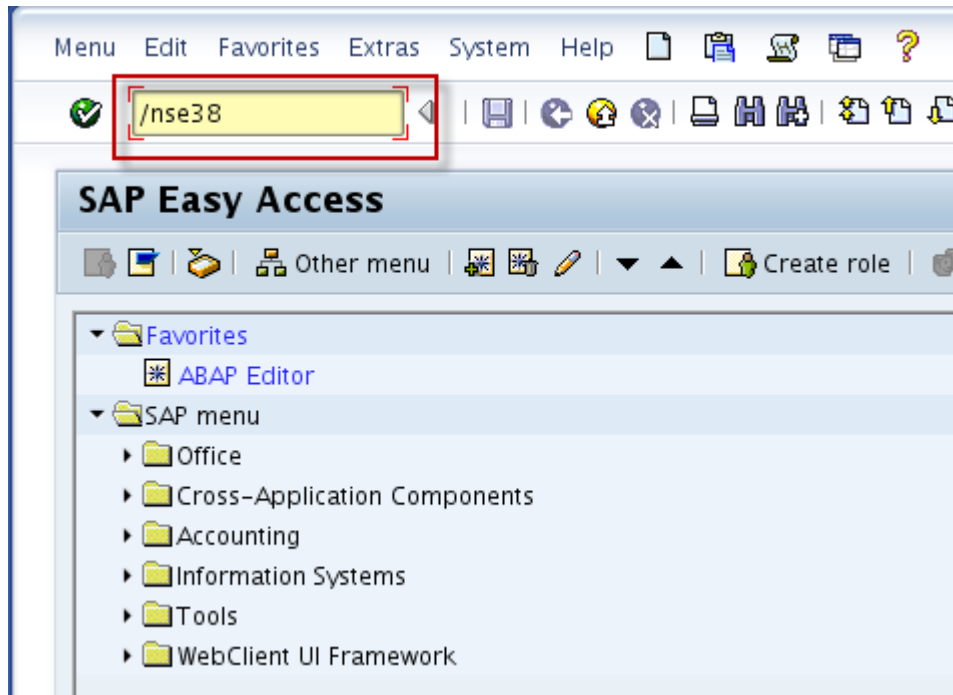
27. You can now log off Client 000 and log onto Client 001 with userid **developer** and password **ch4ngeme**

Congratulations, you can now begin using SAP NetWeaver Gateway.

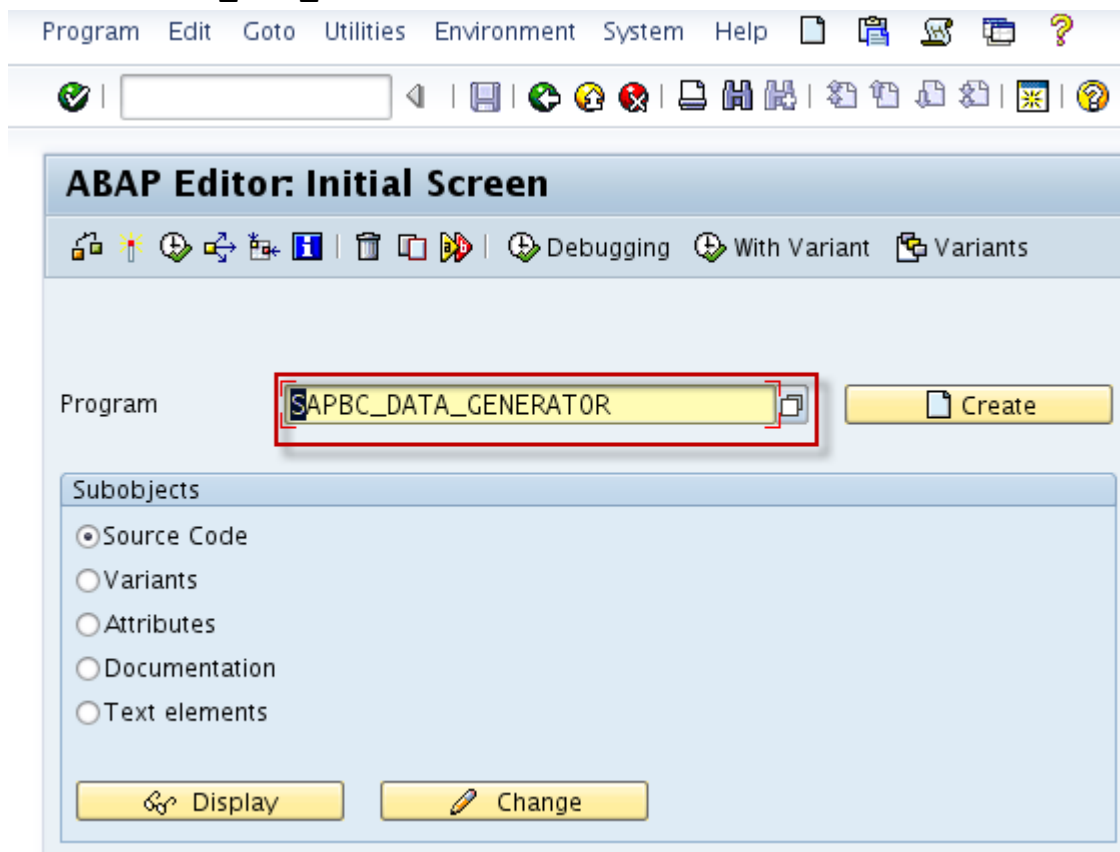
A service that you can already use is

[http://nplhost:8042/sap/opu/sdata/IWFND/RMTSAMPLEFLIGHT/?sap-client=001&\\$format=xml](http://nplhost:8042/sap/opu/sdata/IWFND/RMTSAMPLEFLIGHT/?sap-client=001&$format=xml)

To create data and begin using the SAP Standard SFlight scenario, run transaction **/nse38**

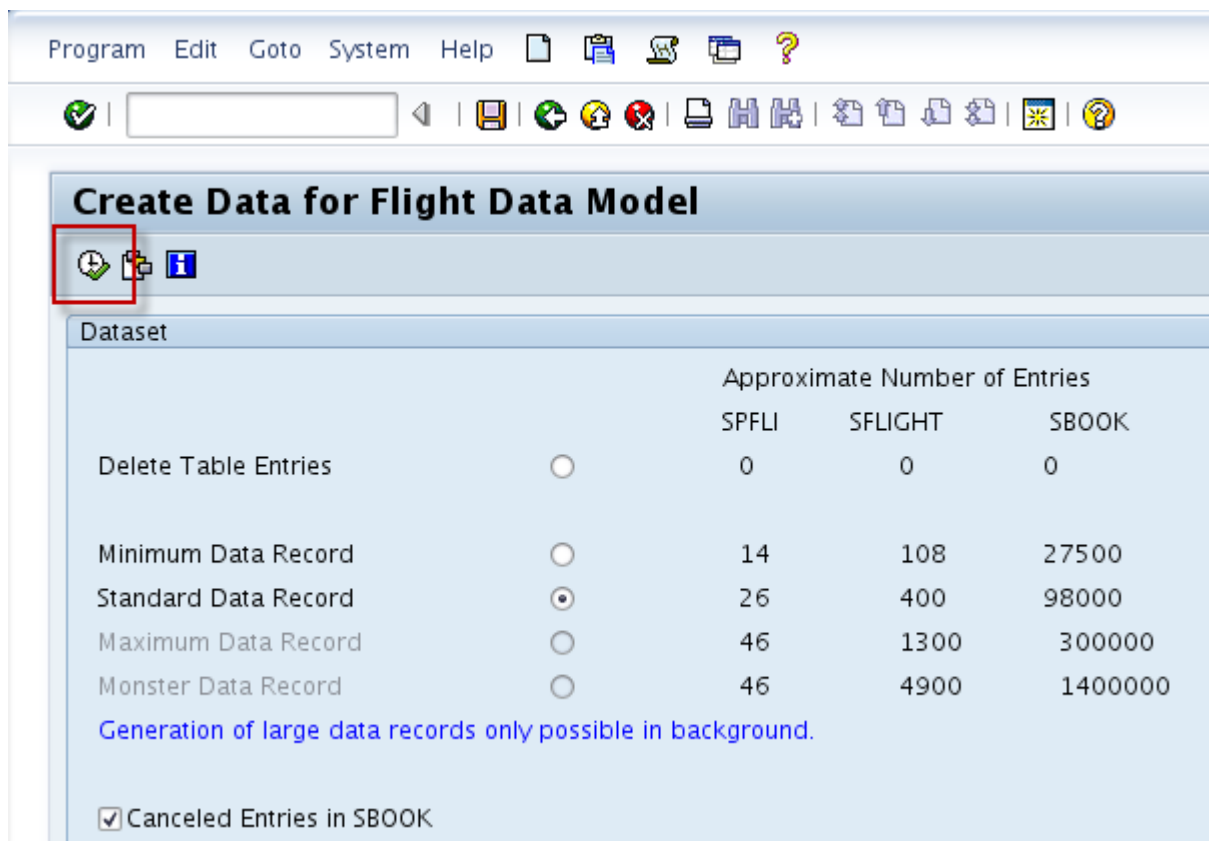


Enter program **SAPBC\_DATA\_GENERATOR**



Execute with default set.





**Create Data for Flight Data Model**

Dataset

		Approximate Number of Entries		
		SPFLI	SFLIGHT	SBOOK
Delete Table Entries	<input type="radio"/>	0	0	0
Minimum Data Record	<input type="radio"/>	14	108	27500
Standard Data Record	<input checked="" type="radio"/>	26	400	98000
Maximum Data Record	<input type="radio"/>	46	1300	300000
Monster Data Record	<input type="radio"/>	46	4900	1400000

Generation of large data records only possible in background.

Canceled Entries in SBOOK

Additional How-to guides are available at <http://www.sdn.sap.com/irj/sdn/gateway?rid=/webcontent/uuid/c0a638d0-8478-2e10-8eb4-f157b64fb221> showing provisioning and consumption of SAP Services .

## 4. Warning

Before you shut down your Linux machine, you must close all SAP services and databases. You can do this from the SAPMC control console. Right click on the NPL and choose “stop” and wait for it to close before shutting down your Linux machine. Failure to do so could result in the database being in an incorrect state on the next startup.

<http://www.sdn.sap.com/irj/sdn/gateway>