

Set Analyzer

How to Use Set Analyzer with Oracle 9 or DB2 8.1 Middleware.

Overview

The purpose of this document is to provide step-by-step instructions on using Set Analyzer full client with either Oracle 9 or DB 8.1 middleware. This document applies to Set Analyzer version 6.5.x, XI Release 1 and XI Release 2.

Contents

INTRODUCTION	2
CONFIGURING CONNECTION IN SET ANALYZER.....	2
<i>For Oracle 9 Middleware</i>	<i>2</i>
<i>For DB2 8.1 Middleware</i>	<i>5</i>
FINDING MORE INFORMATION	7

Introduction

Using SA full client with either Oracle 9 or DB 8.1 middleware is officially not supported. This is due to a limitation of the Borland Database Engine, or BDE, which SA full client relies on to connect databases. The Borland Database Engine designed by Borland is publicly available for third parties to use for accessing data stored in several formats. This document provides information on how set up Set Analyzer to work with Oracle 9 or DB 8.1.

Configuring Connection in Set Analyzer

For Oracle 9 Middleware

After installing Oracle 9.x middleware on the system, follow these steps to configure Set Analyzer:

1. Launch Set Analyzer Connect (Figure 1).

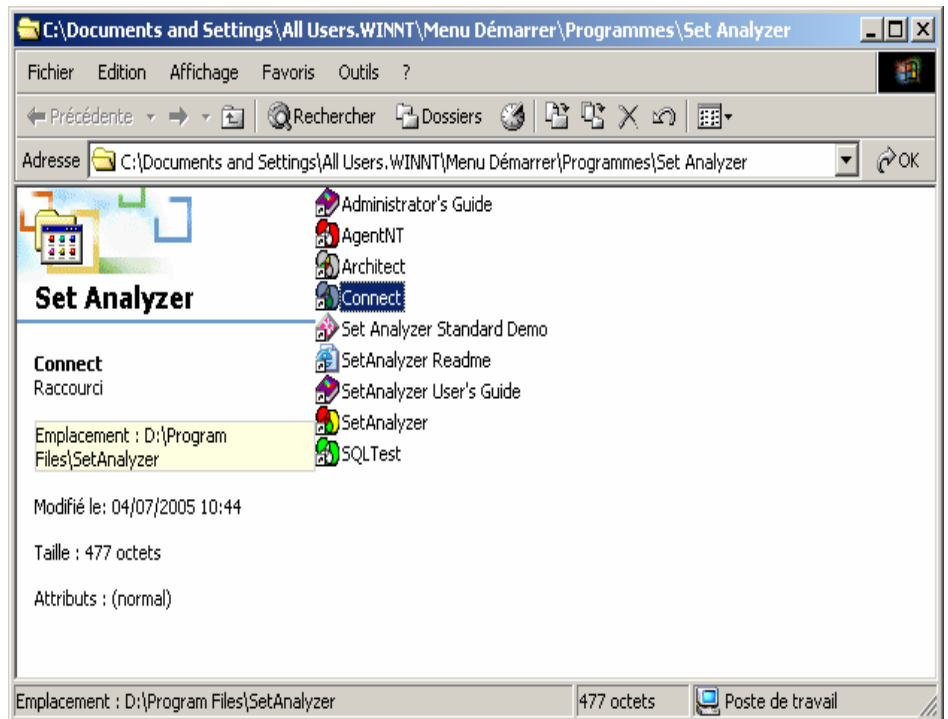


Figure 1

2. In the **Set Analyzer Connect** dialog box, click the **Connections** tab (Figure 2).

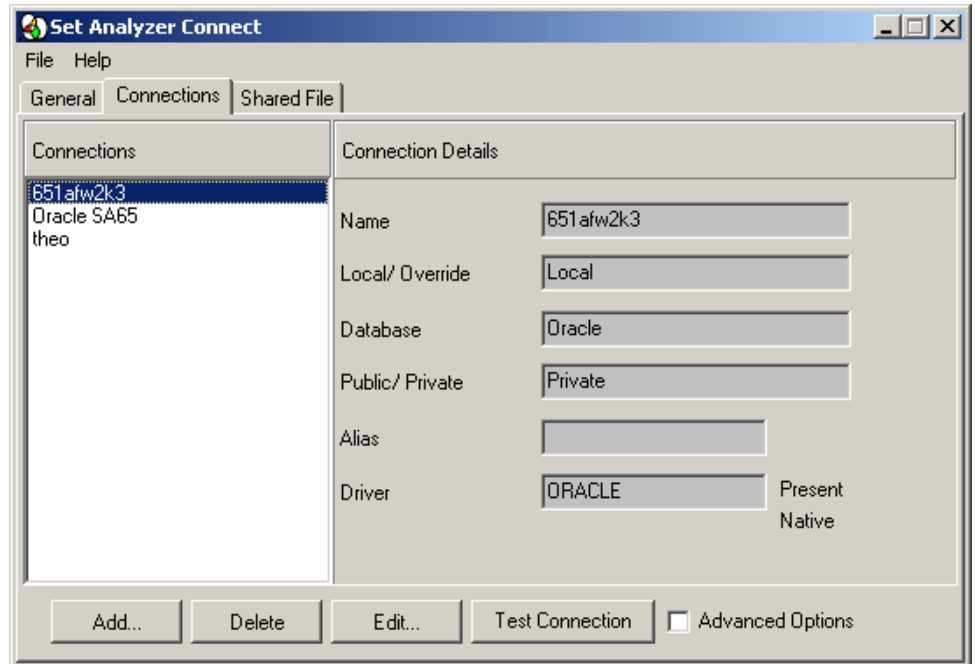


Figure 2

3. Click the **Add** button. The **Select Database** dialog box appears.

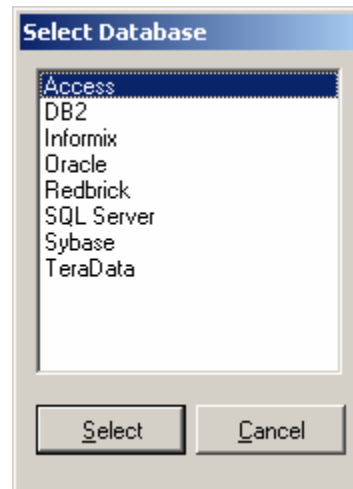


Figure 3

4. In the **Select Database** dialog box (Figure 3), click **Oracle**, then click the **Select** button. The **New Oracle connection** dialog box appears.

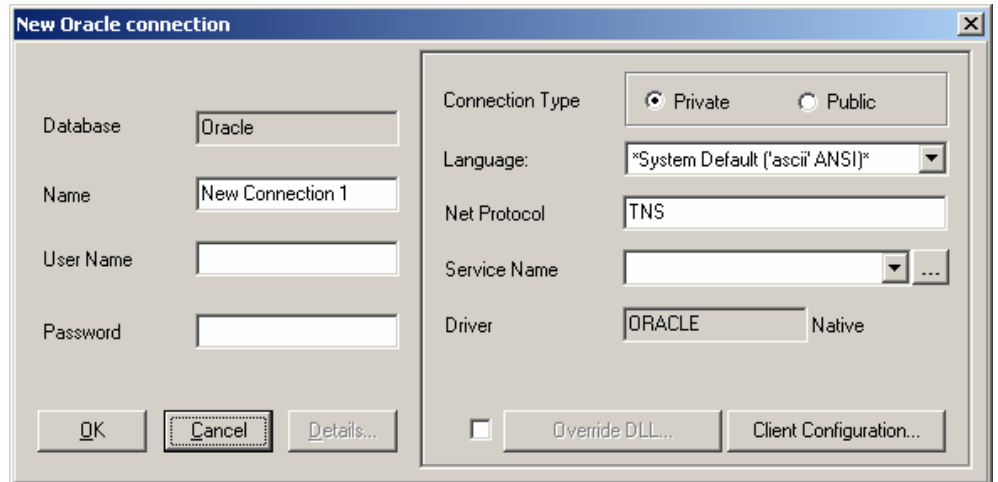


Figure 4

5. In the **New Oracle connection** dialog box (Figure 4), enter a name for the connection in the **Name** field and then enter a valid user name and password in the **User Name** and **Password** fields.
6. Click the **Private** option button next to **Connection Type** then click the ellipses button (...) next to the **Service Name** drop-down box. The **Oracle Server Entry** dialog box appears.
7. In the **Oracle Server Entry** dialog box, type the Oracle service name you want to connect to (figure 5). Click **OK**.

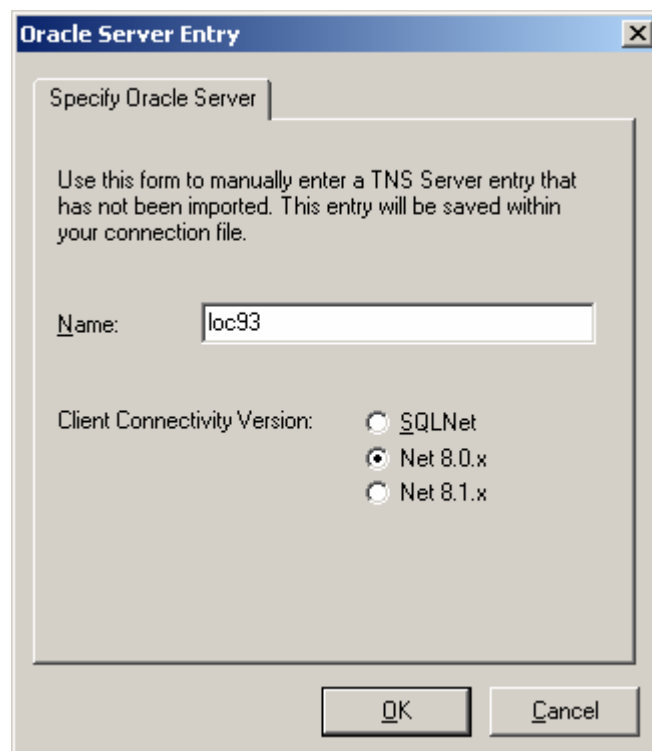


Figure 5

The connection for Oracle 9 middleware is now configured (Figure 6).

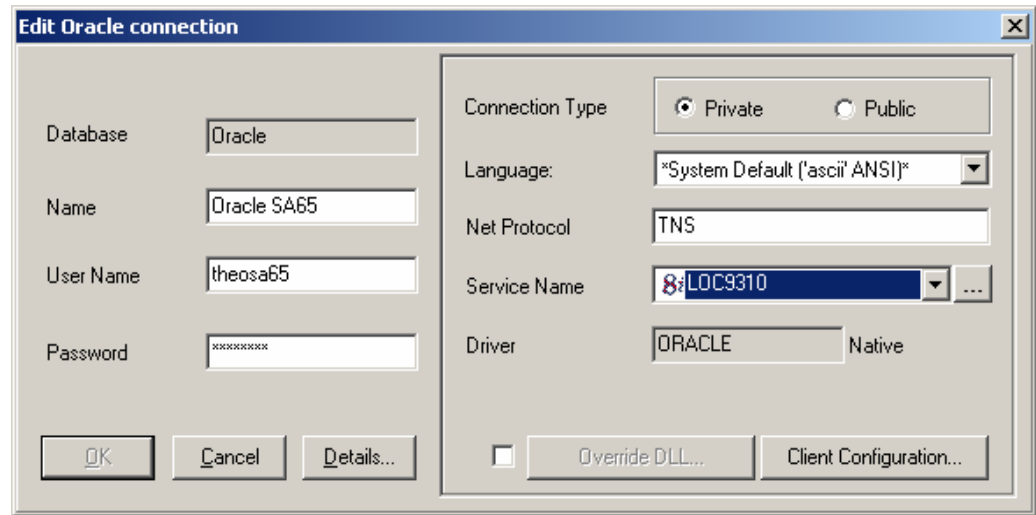


Figure 6

For DB2 8.1 Middleware

After installing DB2 8.1 middleware on the system, follow these steps to configure Set Analyzer:

1. Prior to starting any Set Analyzer services, create a new BSAConfig.ini file with the following code:


```
[DBMSW-sqldDB2]
LiteralExec=True
```
2. Save this file to the Set Analyzer installation folder.
3. Launch Set Analyzer Connect.
4. In the **Set Analyzer Connect** dialog box, click the **Connections** tab.
5. Click the **Add** button.
6. In the **Select Database** dialog box (Figure 7), click **DB2**, then click the **Select** button.

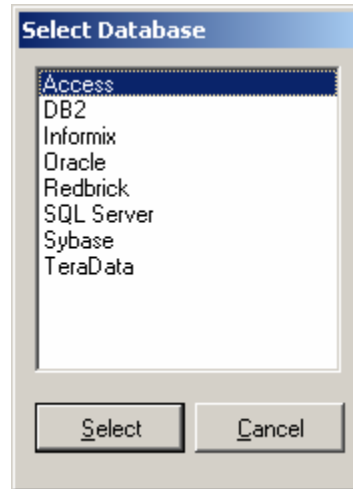


Figure 7

7. In the **New DB2 connection** dialog box (Figure 8), click **DB2/Common** from the **Codebase** drop-down box. Enter a name for the connection in the **Name** field and then enter a valid user name and password in the **User Name** and **Password** fields.

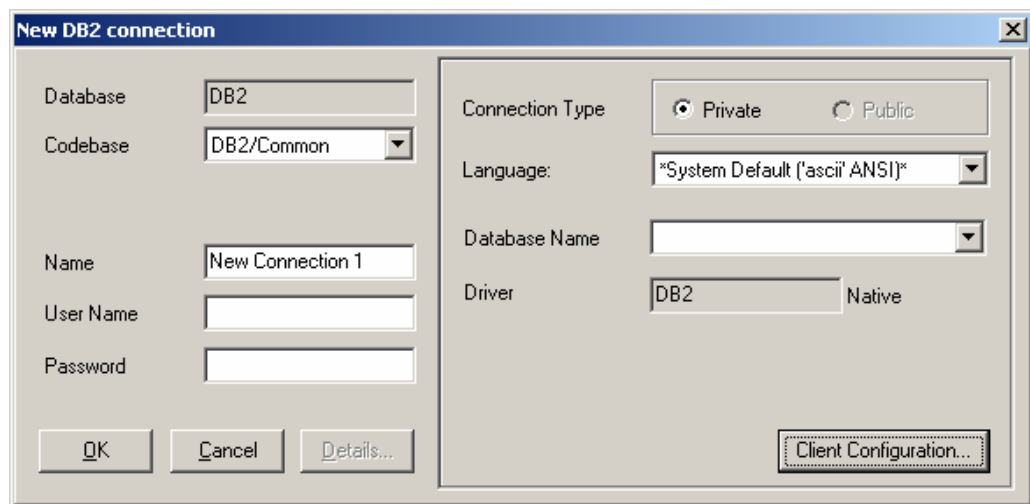


Figure 8

8. Click the database from the **Database Name** drop-down box then click **OK**.

The connection for DB2 8.1 middleware is now configured.

Finding more information

For more information and resources, refer to the product documentation and visit the support area of the web site at:

<http://www.businessobjects.com/>

► www.businessobjects.com

No part of the computer software or this document may be reproduced or transmitted in any form or by any means, electronic or mechanical, including photocopying, recording, or by any information storage and retrieval system, without permission in writing from Business Objects.

The information in this document is subject to change without notice. Business Objects does not warrant that this document is error free.

This software and documentation is commercial computer software under Federal Acquisition regulations, and is provided only under the Restricted Rights of the Federal Acquisition Regulations applicable to commercial computer software provided at private expense. The use, duplication, or disclosure by the U.S. Government is subject to restrictions set forth in subdivision (c) (1) (ii) of the Rights in Technical Data and Computer Software clause at 252.227-7013.

The Business Objects product and technology are protected by US patent numbers 5,555,403; 6,247,008; 6,578,027; 6,490,593; and 6,289,352. The Business Objects logo, the Business Objects tagline, BusinessObjects, BusinessObjects Broadcast Agent, BusinessQuery, Crystal Analysis, Crystal Analysis Holos, Crystal Applications, Crystal Enterprise, Crystal Info, Crystal Reports, Rapid Mart, and WebIntelligence are trademarks or registered trademarks of Business Objects SA in the United States and/or other countries. Various product and service names referenced herein may be trademarks of Business Objects SA. All other company, product, or brand names mentioned herein, may be the trademarks of their respective owners. Specifications subject to change without notice. Not responsible for errors or omissions.

Copyright © 2006 Business Objects SA. All rights reserved.