

# Easy Lookup in Process Integration 7.1



## Applies to:

SAP NetWeaver Process Integration 7.1

For more information, visit the [SOA Management homepage](#).

## Summary

Unlike previous version of PI (7.0) / XI (3.0, 2.0) where we used to write JAVA codes to do lookups in graphical message mapping, PI7.1 has the easy look up functionality. RFC as well JDBC lookups can be done in minutes using simple graphical mapping editor.

**Author:** Pushkar Anand

**Company:** Deloitte

**Created on:** 29 Aug 2008

## Author Bio



I have been working as an SAP ABAP & PI Consultant. I have worked on multiple PI implementations that include PI 7.1 Implementation for ramp up client as well. I have authored articles on PI and Web Services.

PI, ALE and ESOA are my key areas.

## Table of Contents

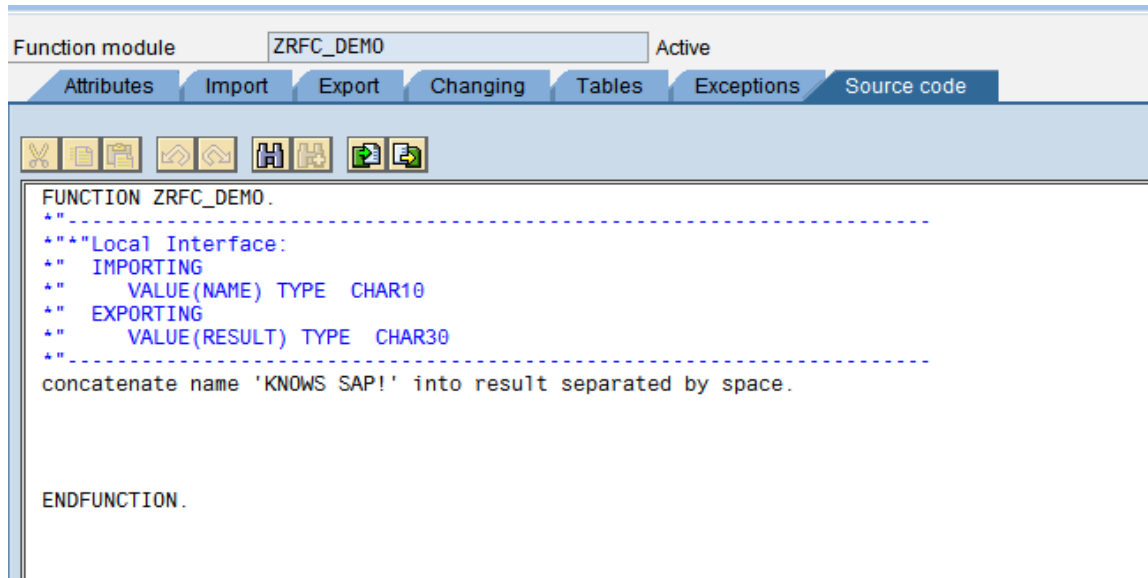
Create RFC Look up in Easy Steps.....	3
Related Content.....	7
Disclaimer and Liability Notice.....	8

## Create RFC Look up in Easy Steps

Create an RFC Enabled Function Module for look up.

I have created ZRFC\_DEMO for this demo with "name" as import parameter.

It concatenates 'Knows SAP!' and returns that string as "result".



```

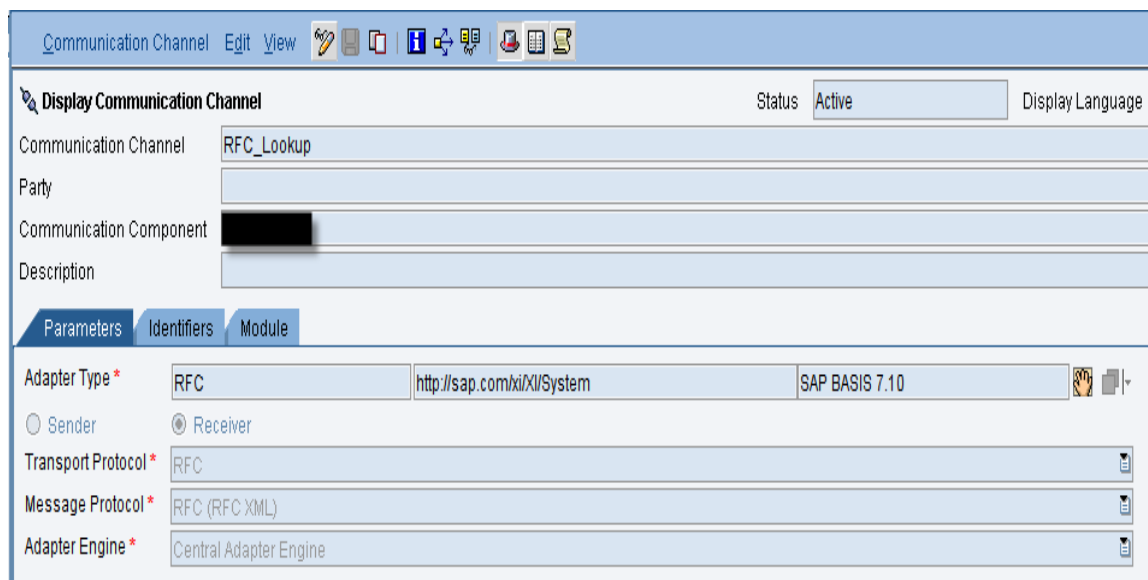
Function module ZRFC_DEMO Active
Attributes Import Export Changing Tables Exceptions Source code
FUNCTION ZRFC_DEMO.
*-----
**"Local Interface:
**  IMPORTING
**    VALUE(NAME) TYPE CHAR10
**  EXPORTING
**    VALUE(RESULT) TYPE CHAR30
**-----
concatenate name 'KNOWS SAP!' into result separated by space.

ENDFUNCTION.

```

Create a Communication Channel to be used for Look up.

We are using RFC Channel for this Demo.



Communication Channel Edit View

Display Communication Channel Status Active Display Language

Communication Channel RFC\_Lookup

Party

Communication Component

Description

Parameters Identifiers Module

Adapter Type\* RFC http://sap.com/xi/XI/System SAP BASIS 7.10

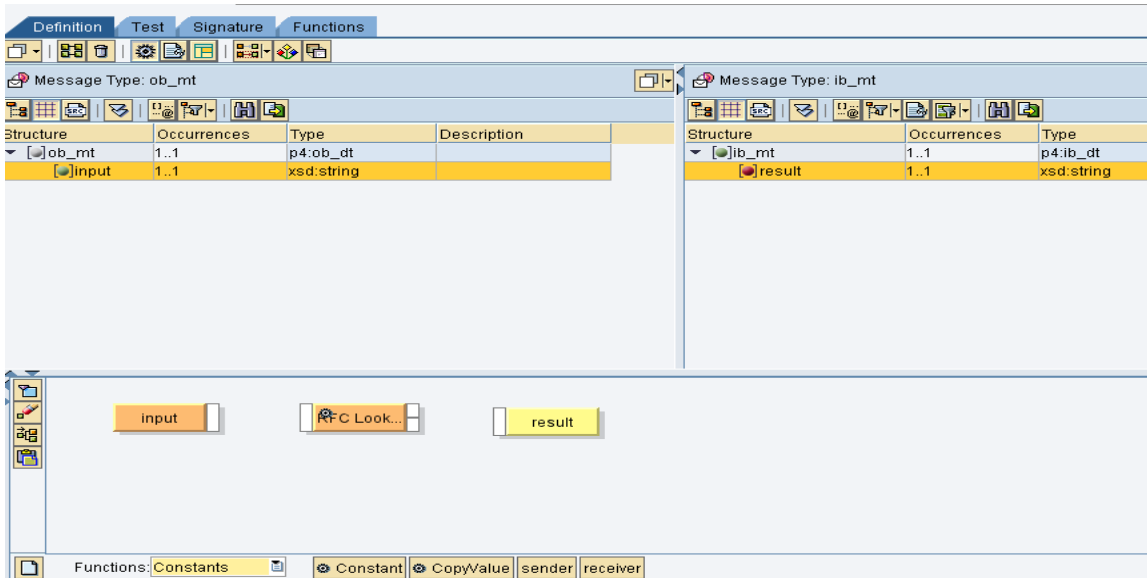
Sender  Receiver

Transport Protocol\* RFC

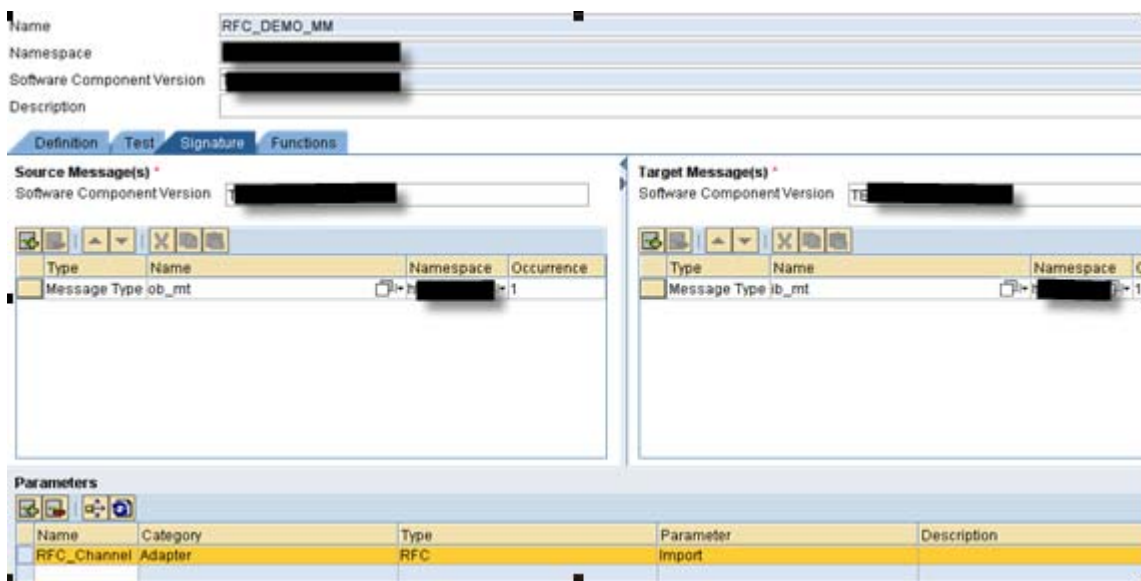
Message Protocol\* RFC (RFC XML)

Adapter Engine\* Central Adapter Engine

Create a message mapping where input will be passed to SAP Pre delivered “RFC Lookup” Function as shown below.

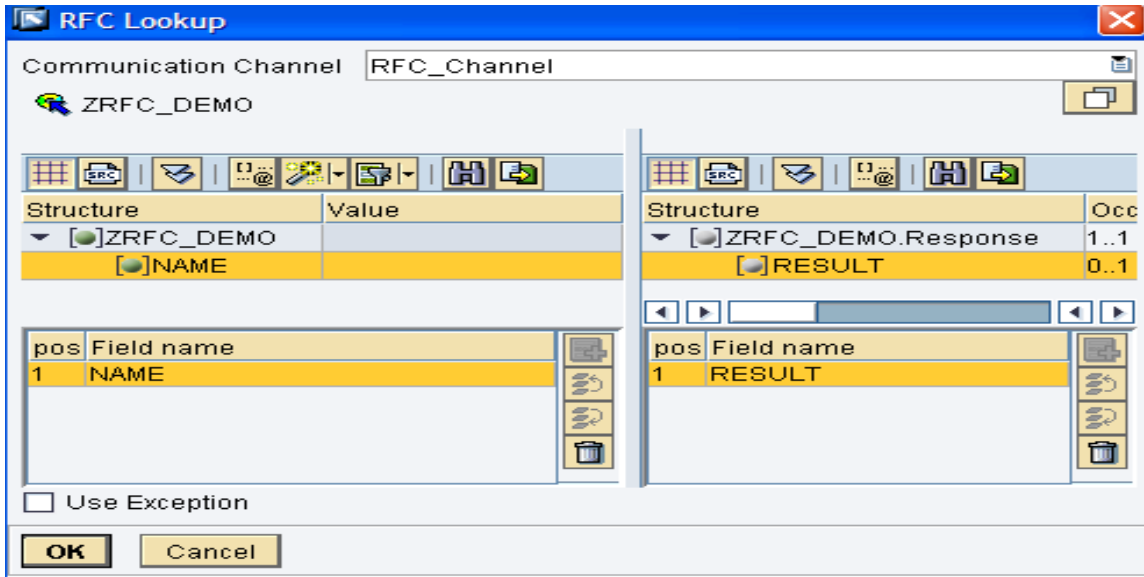


Go to Signature Tab and Define a Channel Parameter under parameters section.

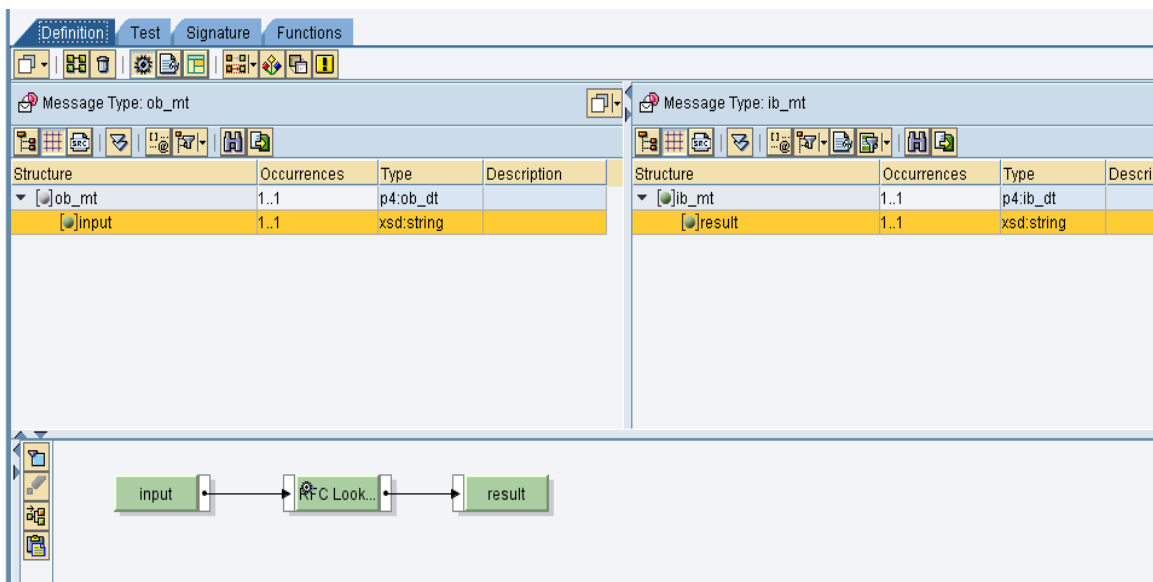


Go back to design tab, click on RFC Lookup and select the channel defined in signature tab. Click on white box icon below channel to select the RFC structure. (This will show the RFCs under imported objects).

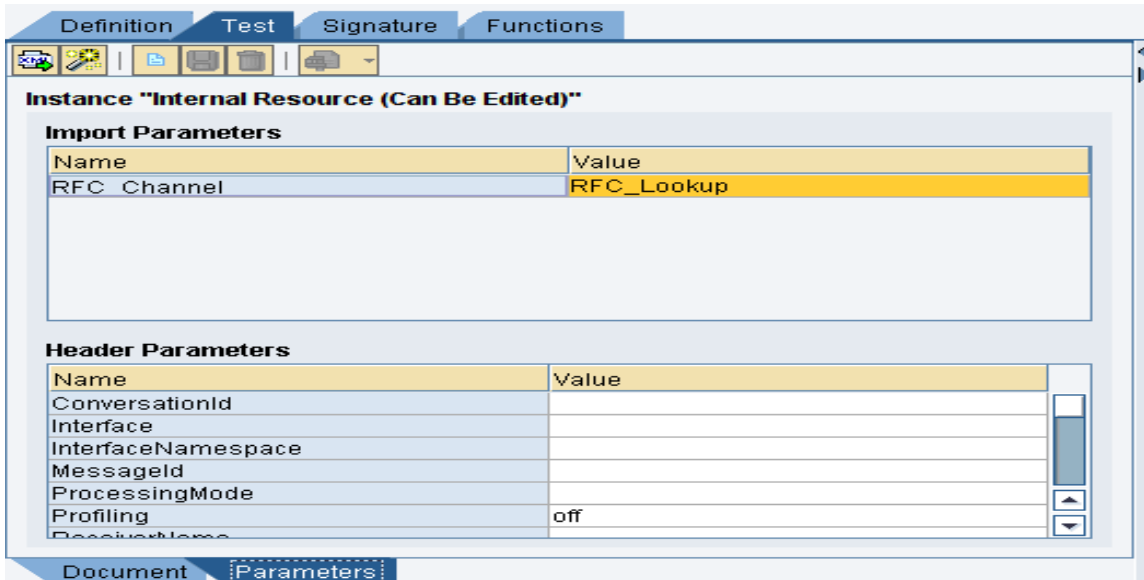
Going ahead, select and add fields in the request and response sections to define lookup import and export parameters.



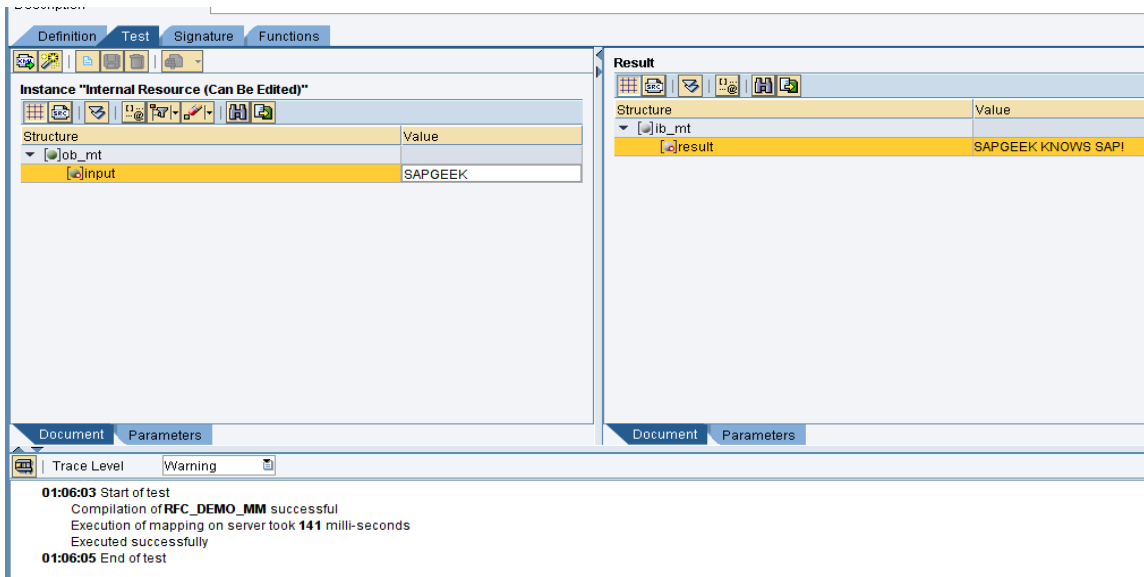
Map the source and target fields with RFC Lookup function as shown below.



Go to test Tab to test this scenario. Under Parameters section specify the actual communication channel name defined in Integration Builder as shown below.



Go back to Document tab, provide any input string and execute the mapping. And here we can see the target field "result" populated with RFC response.



## Related Content

<https://www.sdn.sap.com/irj/sdn/go/portal/prtroot/docs/library/uuid/c0ed3b8c-698c-2a10-fbaf-b1df0c82fc8a>

For more information, visit the [SOA Management homepage](#).

## Disclaimer and Liability Notice

This document may discuss sample coding or other information that does not include SAP official interfaces and therefore is not supported by SAP. Changes made based on this information are not supported and can be overwritten during an upgrade.

SAP will not be held liable for any damages caused by using or misusing the information, code or methods suggested in this document, and anyone using these methods does so at his/her own risk.

SAP offers no guarantees and assumes no responsibility or liability of any type with respect to the content of this technical article or code sample, including any liability resulting from incompatibility between the content within this document and the materials and services offered by SAP. You agree that you will not hold, or seek to hold, SAP responsible or liable with respect to the content of this document.